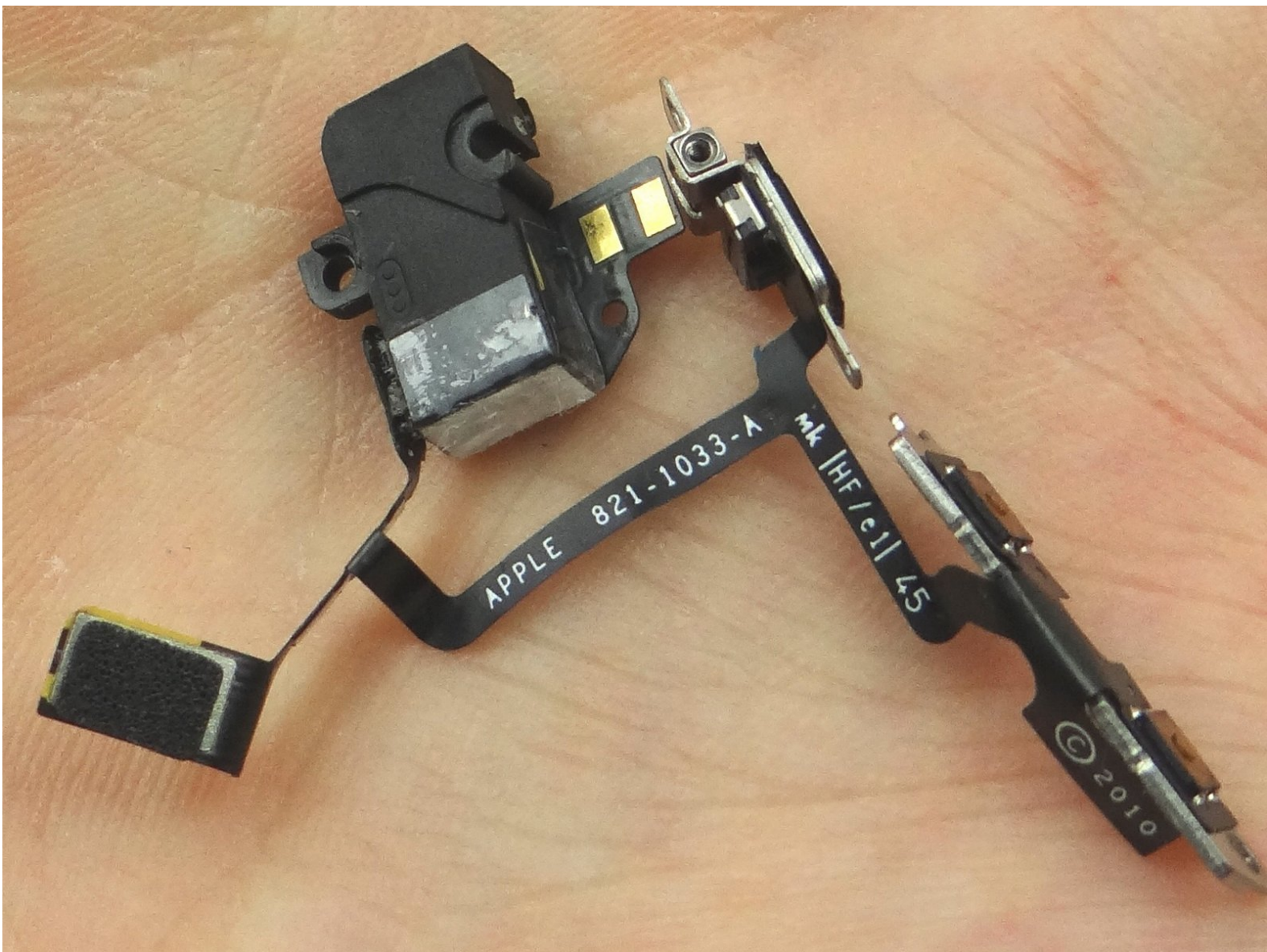


CELLPHONESANDBOX

Manual 07 - Headphone Jack Assembly / Volume Buttons / Vibrator Switch

Written By: Josh Patterson

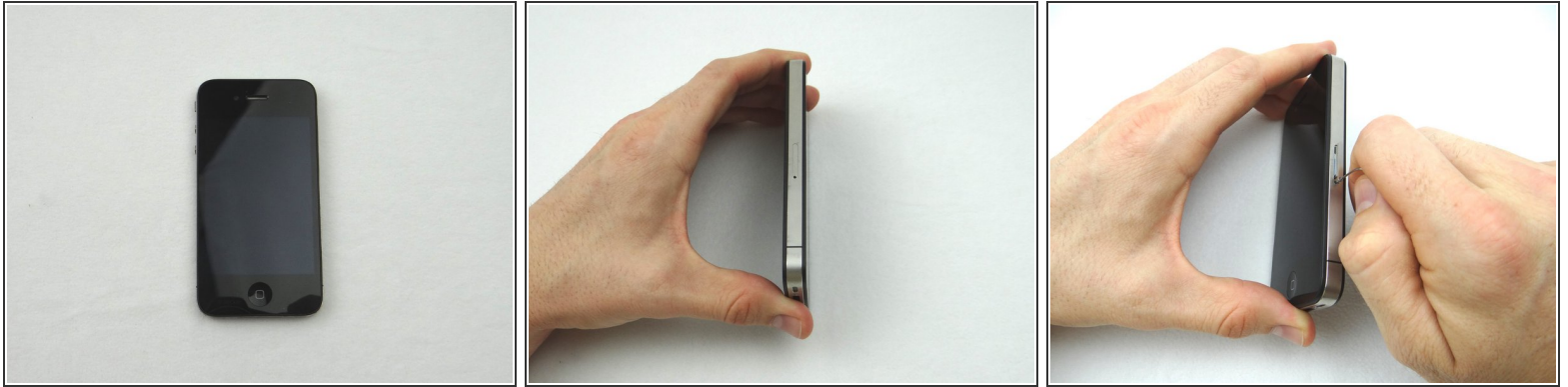




TOOLS:

- [Technician Starter Package](#) (1)
-

Step 1 — Removal 1 - Battery Cover



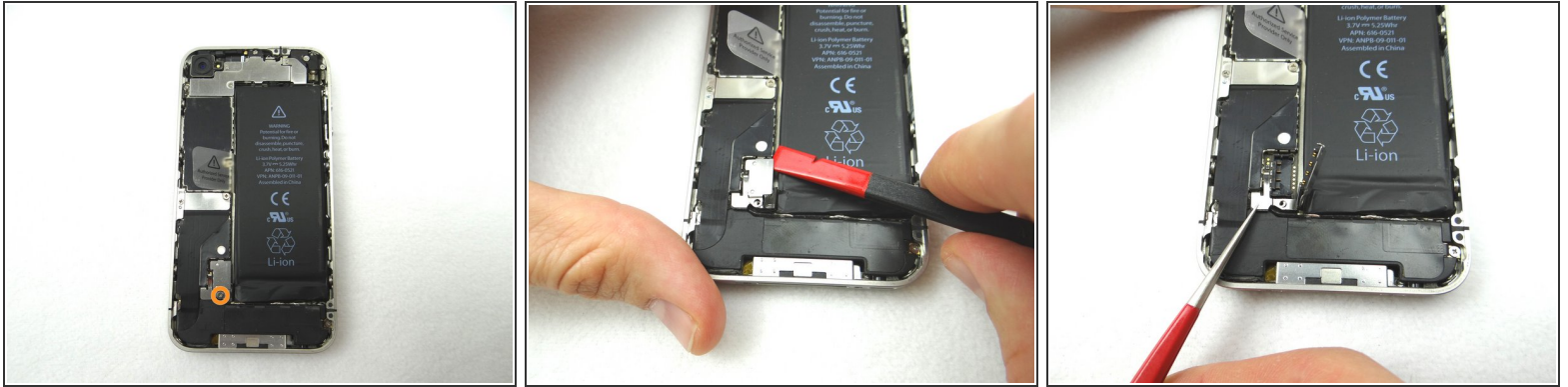
- Before disassembling the iPhone, thoroughly wash and dry your hands.
- Make sure handset is powered off. Use a SIM card eject tool or a paperclip to eject the SIM card tray. This may require a significant amount of force.
- Place the SIM card and SIM card tray in COMPARTMENT A.

Step 2



- Place the handset in your non-dominant hand. Remove two Pentalobe screws near charging port with special 5-point Pentalobe screwdriver. Place screws in SLOT 1.
- Gently slide battery cover upwards. Pull battery cover away from iPhone. Place battery cover in ZONE I.

Step 3 — Removal 2 - Battery



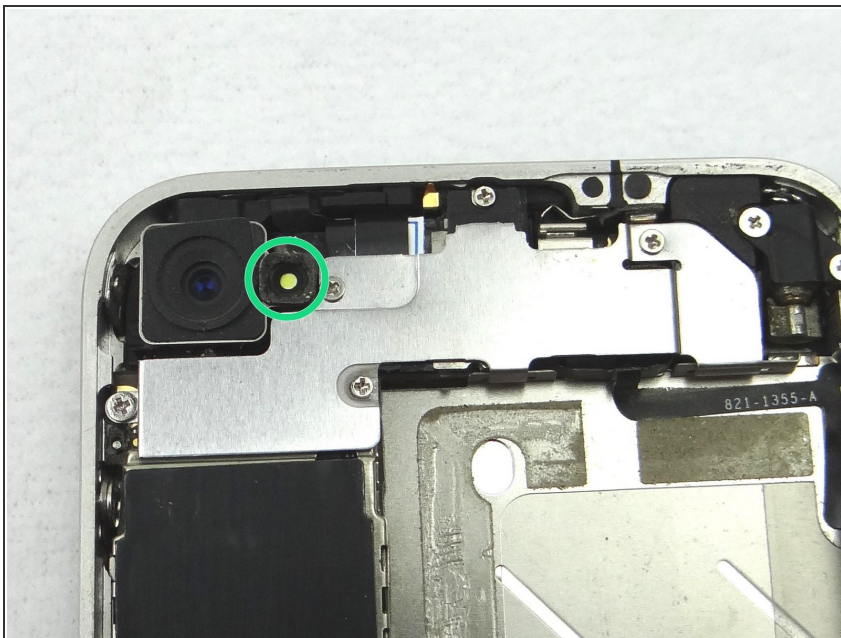
- Picture 1: Remove the 2.5 mm Phillips screw and place in SLOT 2.
 - Picture 2: Place the flat end of the Black Spudger (tip is painted red for better illustration) at the top of the battery connector. Gently twist the spudger counter-clockwise to lift the connector from its socket.
- ⚠ Be very careful to only pry up on the battery connector and not the socket on the logic board. If you pry on the socket, you could break the socket off the logic board.**
- Picture 3: Use Fine Point Tweezers to remove the T-Shaped Antenna Shield. Place the Antenna Shield with the screw in SLOT 2.

Step 4



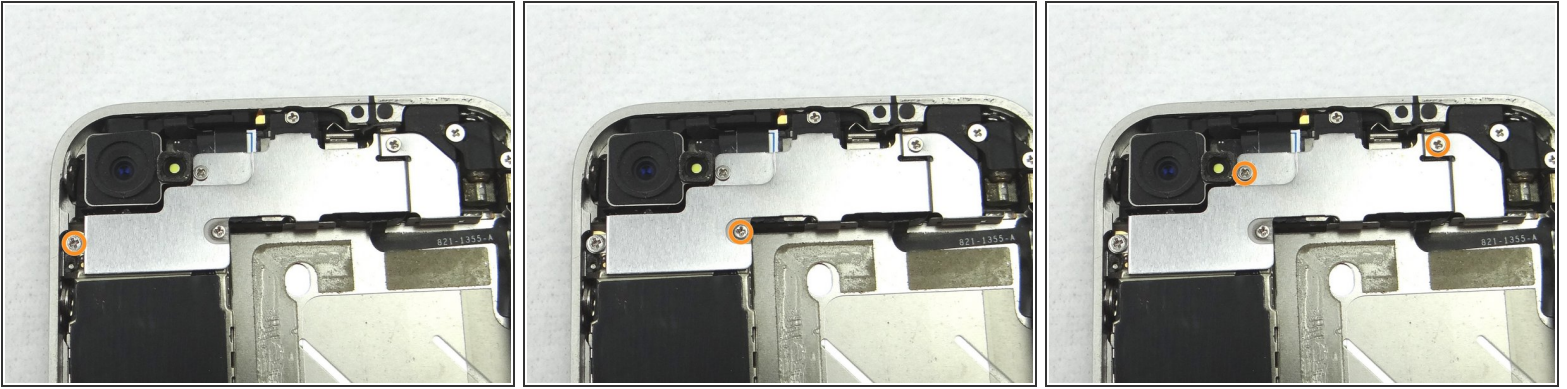
- Apply low-level heat (100* Celcius or less) to edges of battery for 60 seconds to loosen the adhesive securing the battery to the iPhone.
- Wedge the flat end of the Black Spudger on the right edge of the battery. Gently pry up in three or four spots along the right edge to release the adhesive adhering it to the mid-frame.
- Once loose, use the plastic pull tab to peel the battery free from the iPhone. Place the battery in ZONE II

Step 5 — Removal 3 - Rear Camera



- Use a pair of tweezers to remove the outer plastic ring (if present) located on top of the rear camera's flash. Place in COMPARTMENT B.

Step 6



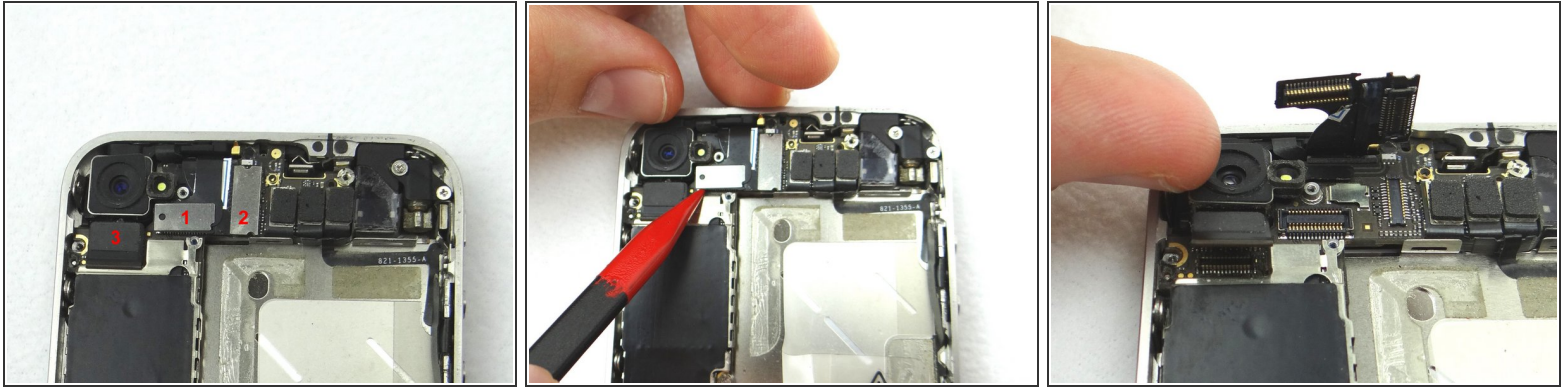
- Picture 1: Remove the 2.3 mm Phillips screw and place in SLOT 3.
- Picture 2: Remove the 1.4 mm Phillips screw and place in SLOT 4.
- Picture 3: Remove two 1.6 mm Phillips screws and place them in SLOT 5.

Step 7



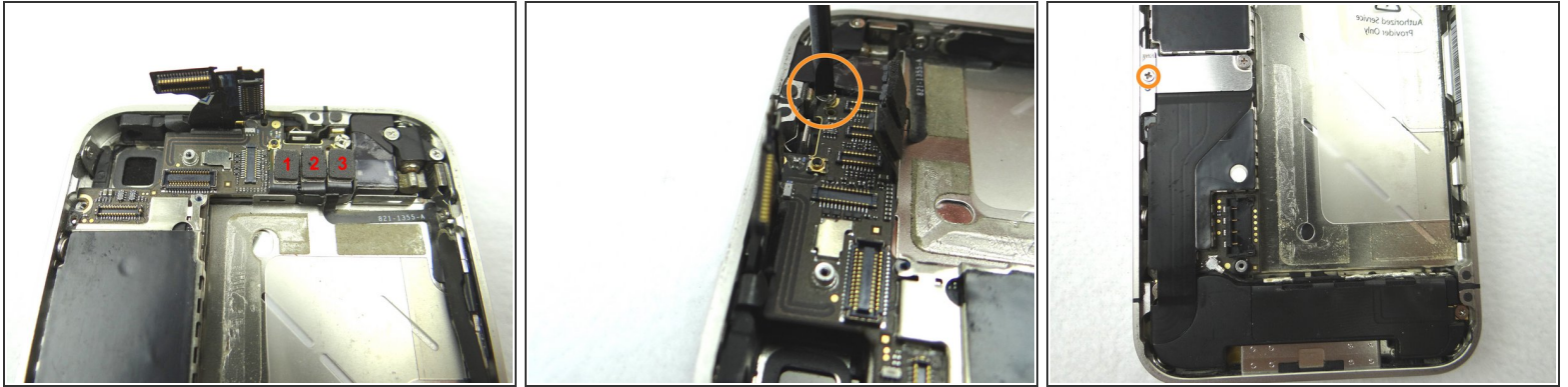
- Picture 1: Remove 4.8 mm Phillips screw and place in SLOT 6.
- Picture 2: Picture of the cable shield clipped to the mid-frame.
- Next, slowly pull Cable Shield towards bottom of iPhone until the tabs at the bottom of the shield (see red squares) are free.
- Place Cable Shield in COMPARTMENT B (with the plastic ring from the camera flash, if present)

Step 8



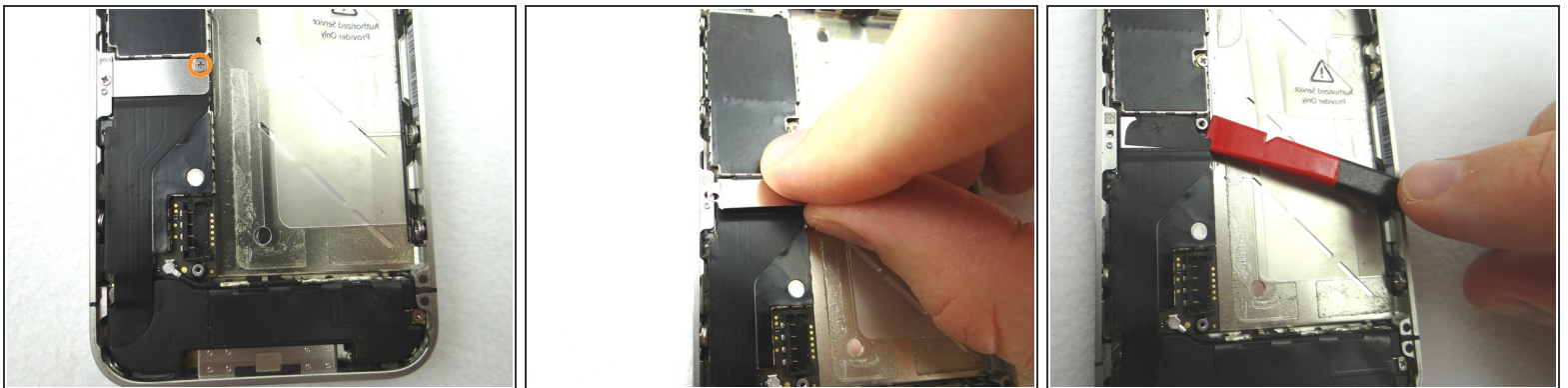
- Picture 1: Disconnect three ribbon cables in order.
 - Picture 2: Use the flat end of the black spudger to gently pry three cables free from their sockets on the logic board.
- ⚠ Be careful not to break any components off the surrounding area on the logic board as you pry upwards.**
- Picture 3: Remove the Rear Camera with your fingers. Place in COMPARTMENT C.

Step 9 — Removal 4 - Logic Board



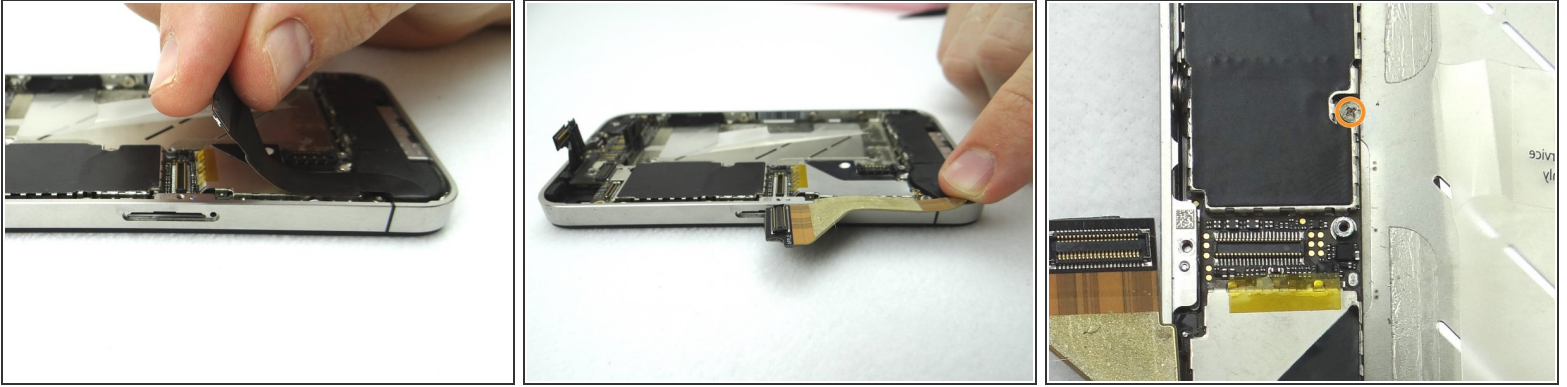
- Picture 1: Disconnect three cables in order.
- Picture 1: Release cables '1' , '2' , and '3'. Use the Black Spudger to gently lift the connectors up and out of the sockets.
- Picture 2: Remove the 4.8 mm standoff with a 2.4 mm flathead screwdriver and place in SLOT 7.
- Picture 3: Remove the 1.2 mm Phillips screw and place in SLOT 8.

Step 10



- Picture 1: Remove 1.6 mm Phillips screw and place in SLOT 9.
- Picture 2: Remove the charging port assembly shield and place with screw in SLOT 9.
- Picture 3: Place flat end of spudger under lower-right corner of the charging port assembly cable. Gently twist your hand clockwise releasing the cable from its socket on the logic board.

Step 11



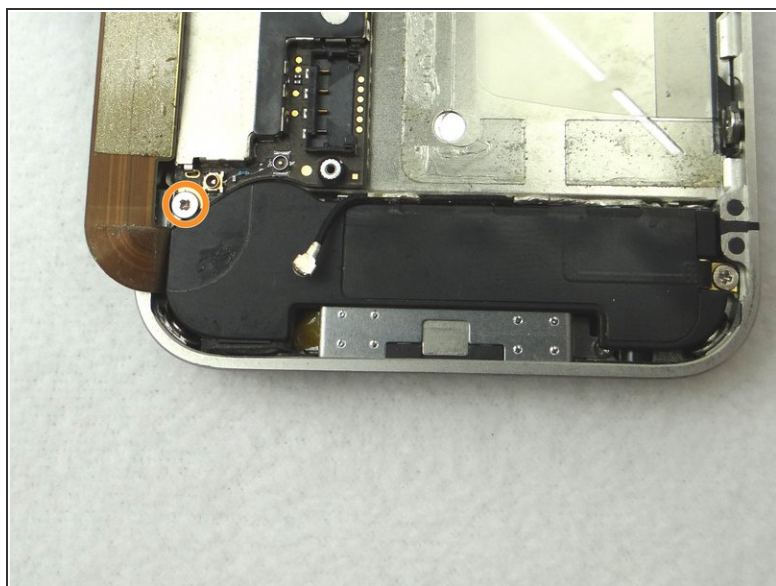
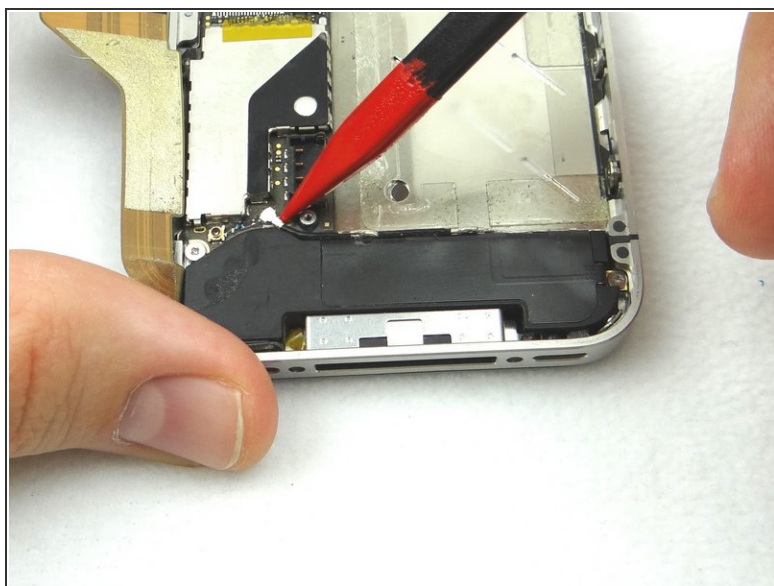
⚠ Picture 1: The charging port assembly cable is adhered to the logic board – gently peel it free from the logic board, working top to bottom until cable is free of logic board. Be cautious as this cable is very fragile.

● Picture 2: Fold the cable to the left.

● Picture 3: Remove the 2.4 mm Phillips screw and place it SLOT 10.

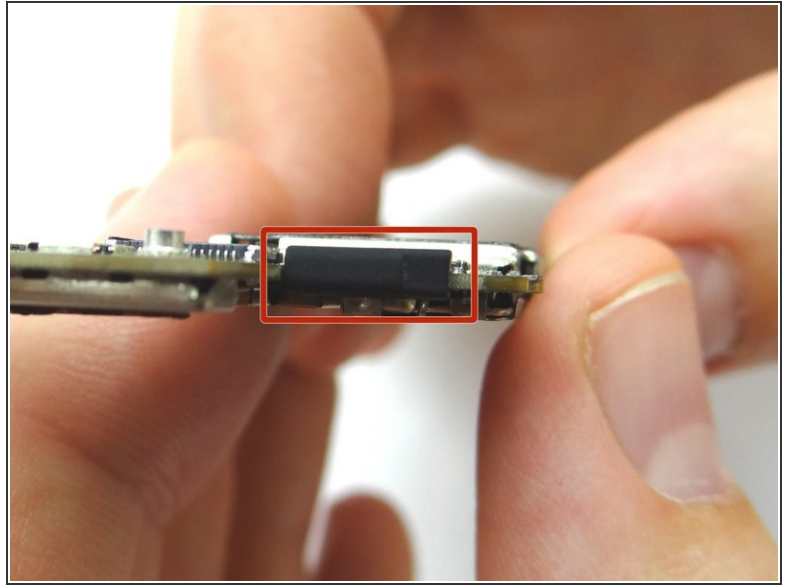
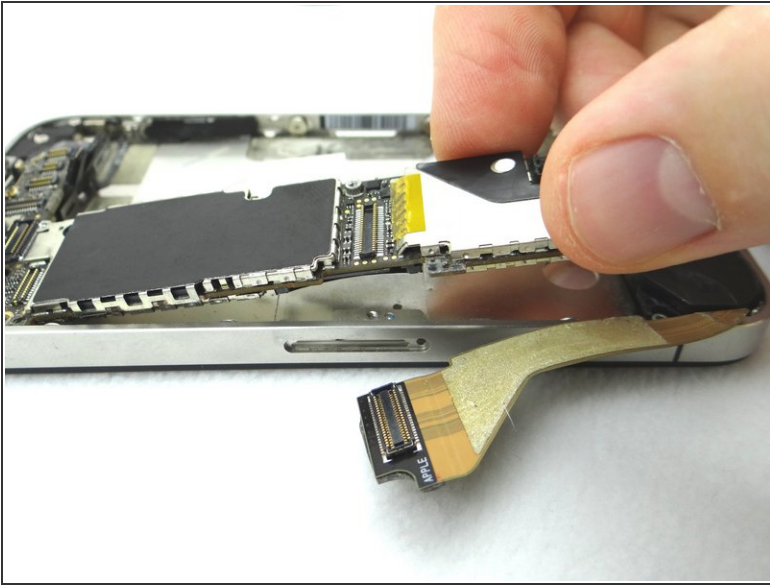
i There may be a white sticker (liquid damage indicator) on top of the Phillips screw. If so, either remove it with tweezers or push through it with your screwdriver.

Step 12



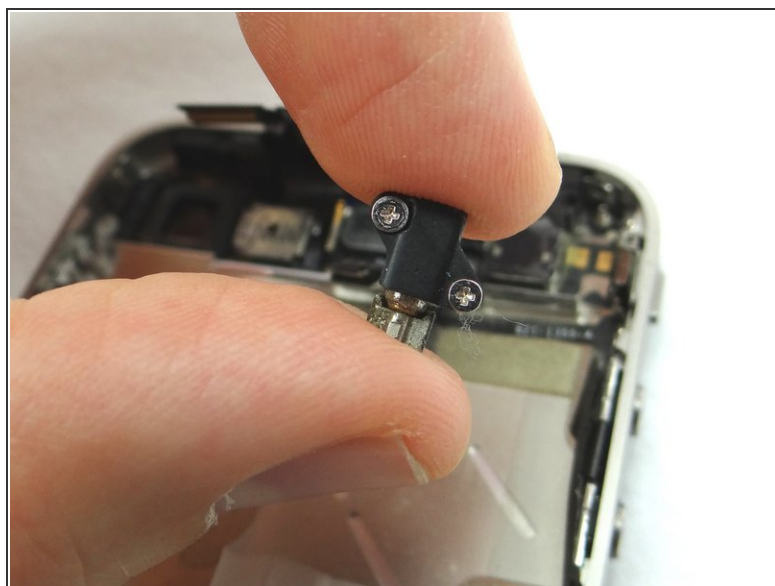
- Picture 1: Place Black Spudger under cellular antenna connector. Gently lift to release antenna from its socket on the logic board.
- Picture 2: Remove the 1.9 mm Phillips screw and place in SLOT 11.

Step 13



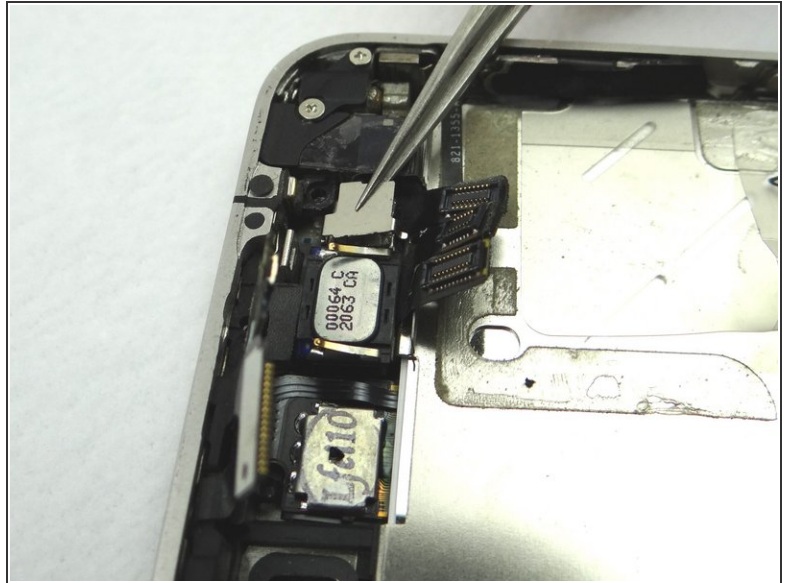
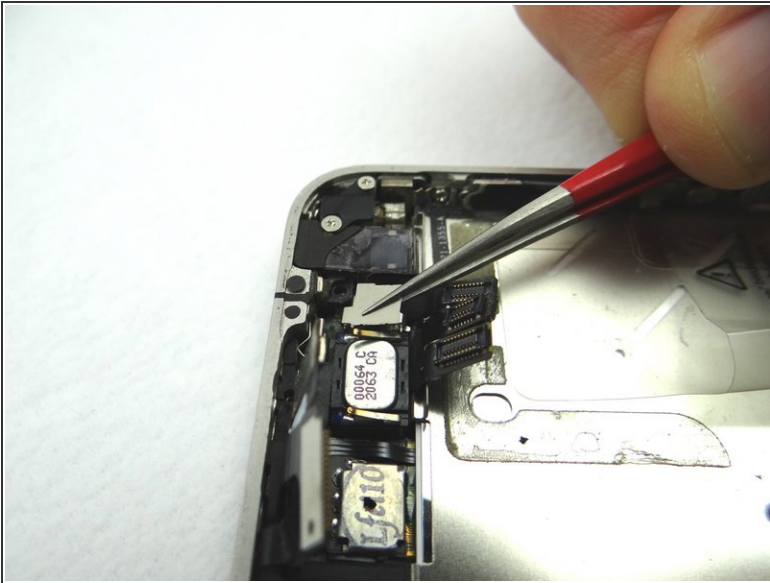
- Picture 1: Carefully lift the logic board just high enough to pinch it with your left thumb and index finger.
- Once you have a good grip on the logic board, use your right hand to brush away cables near the top while pulling the logic board towards you until it is free from the mid-frame. Place in ZONE III.
- Picture 2: There should be a rubber washer at the top of the logic board. It falls off easily and may get stuck in the mid-frame while you remove the logic board. Make sure to place it on the top left edge of the logic board.

Step 14 — Removal 5 - Vibrator



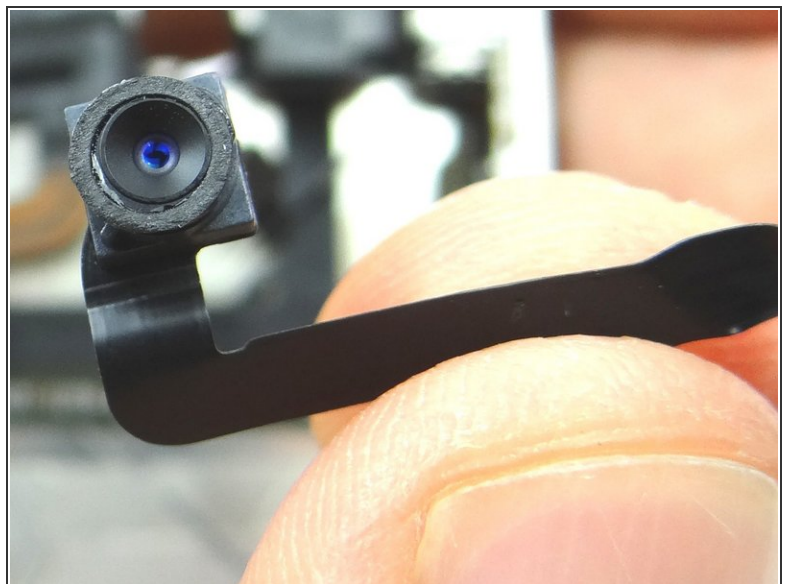
- Picture 1: Remove 6 mm Phillips screw on the left. Remove 1.4 mm Phillips screw on the right. Remove vibrator. Place all three in COMPARTMENT D.
- Picture 2: This is what the vibrator looks like.

Step 15 — Removal 4.2 - Front Facing Camera



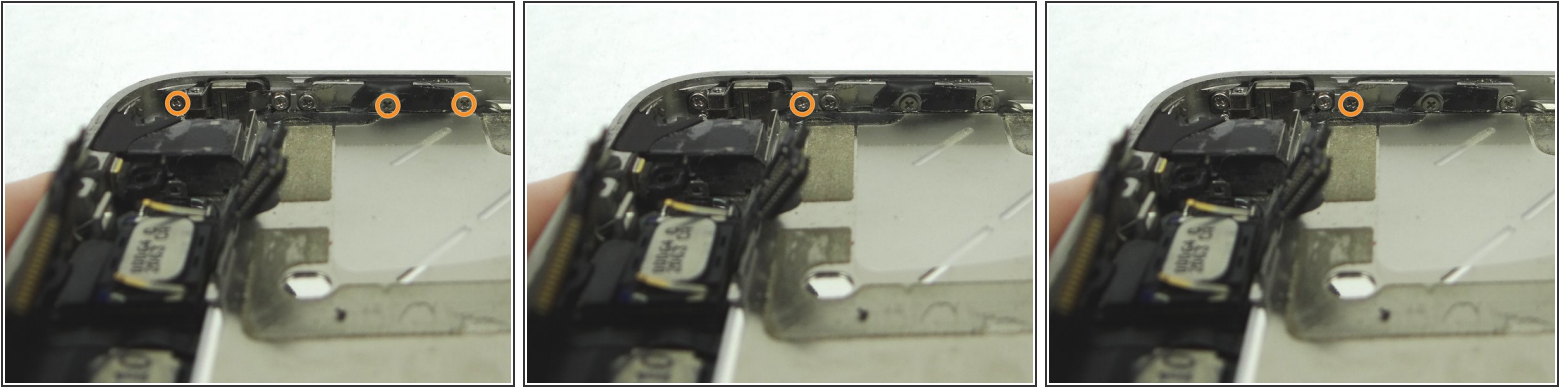
- Pictures 1 and 2: Use a pair of tweezers to remove the metal plate covering the front facing camera; pull the bottom clip free first, then push the plate towards the top of the iPhone to free the top left clip, then pivot right to free the top right clip.
- Remove front-facing camera plate and place in COMPARTMENT E.

Step 16



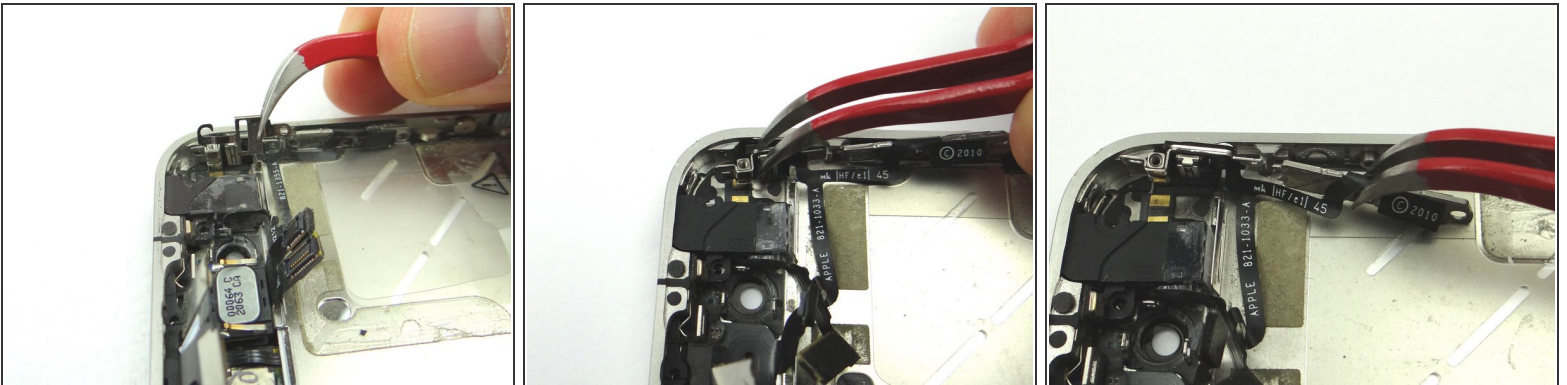
- Pull the front-facing camera free from the iPhone. Place in COMPARTMENT E.

Step 17 — Removal 4.3 - Headphone Jack Assembly



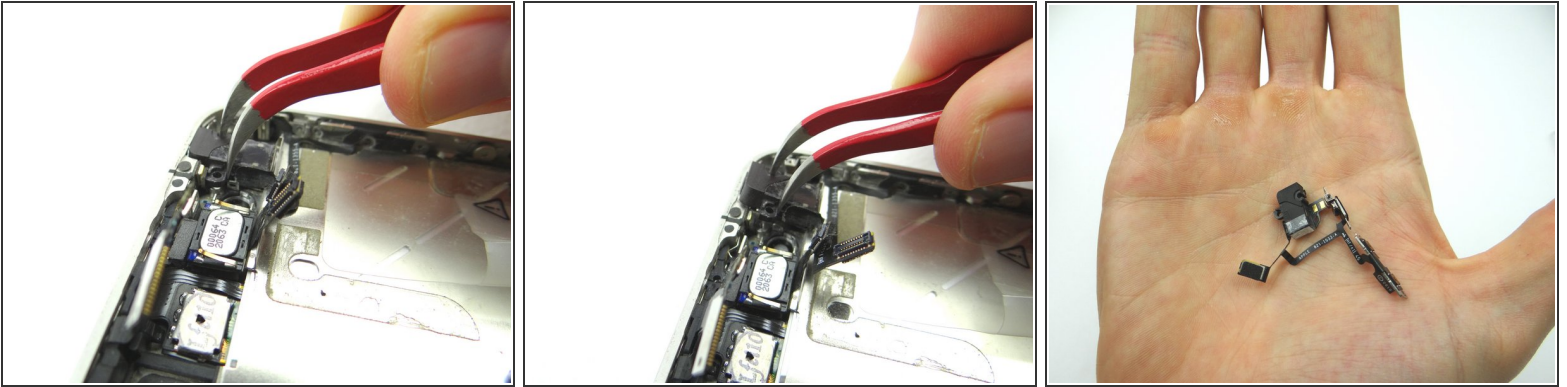
- Picture 1: Remove the three 1.6 mm screws and place into SLOT 12.
- Picture 2: Remove the 1.3 mm screw and place into SLOT 13.
- Picture 3: Remove the 2.1 mm screw and place into SLOT 14.

Step 18



- Picture 1: Remove the mute switch bracket with Curved Tip Tweezers. Place into SLOT 14.
- Picture 2: Use Curved Tip Tweezers to move the mute switch out of its position.
- Picture 3: Use Curved Tip Tweezers to move the volume buttons out of its position.

Step 19



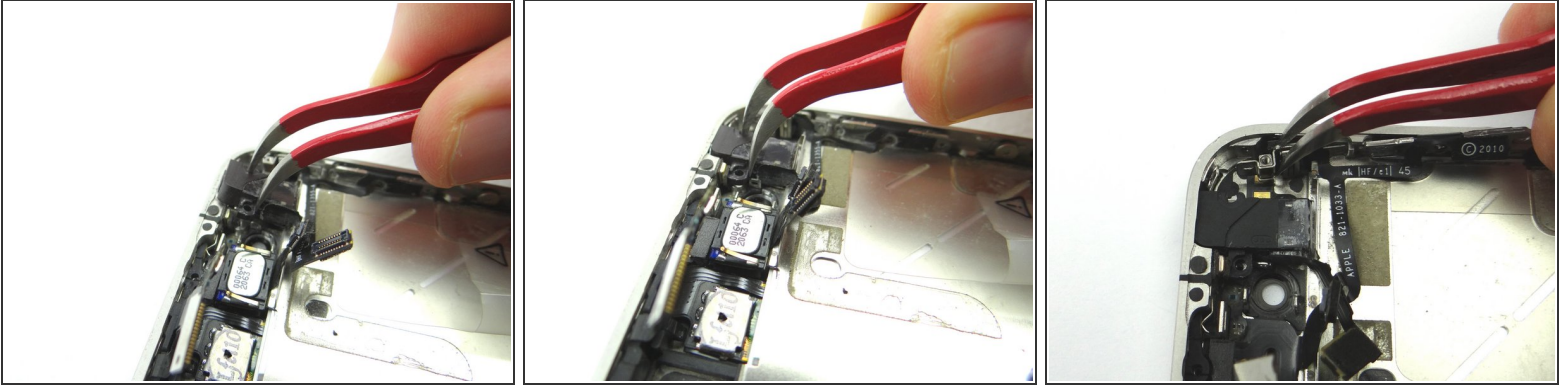
- Picture 1 & 2: Use Curved Tip Tweezers to remove the headset jack from the mid-frame. Pay careful attention to the ribbon cables still attached to the headset jack.

Step 20



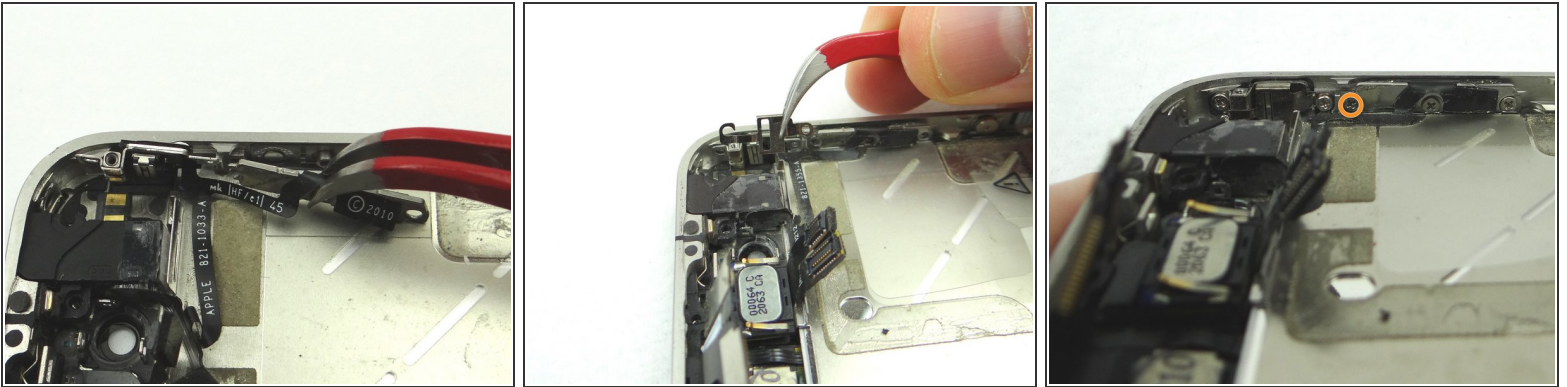
- Picture 1: Gently remove the metal bracket from the volume button ribbon cable.
- Picture 2: Place metal bracket into ZONE V.
- Picture 3: Remove the mute switch bracket from the mute switch. Place mute switch bracket into ZONE V.

Step 21 — Replacement 4.3 - Headphone Jack Assembly



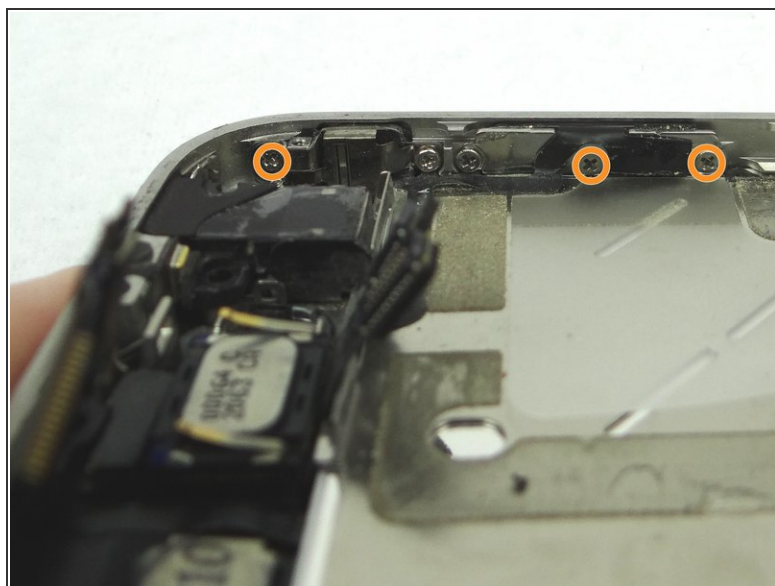
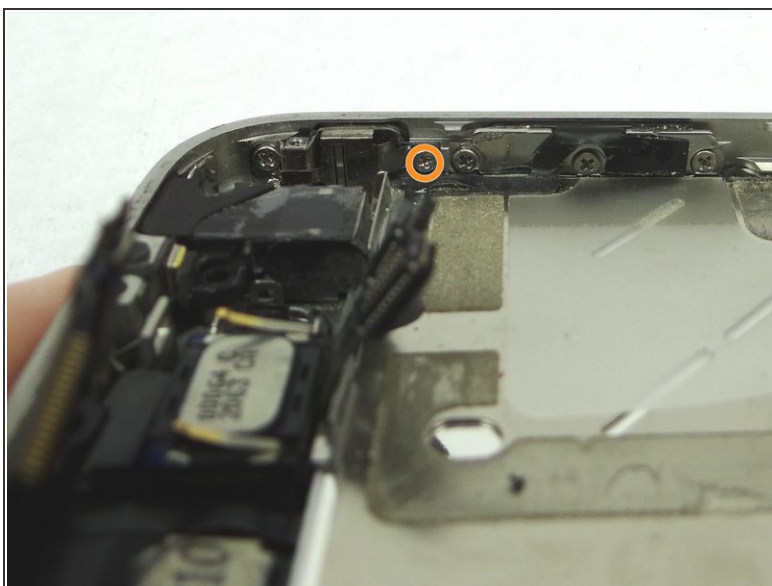
- Picture 1 & 2: Use Curved Tip Tweezers to replace the headset jack assembly from ZONE 5 (or replacement part) into position.
- Picture 3: Use Curved Tip Tweezers to move the mute switch into position.

Step 22



- Picture 1: Use Curved Tip Tweezers to move the volume buttons into position.
- Picture 2: Replace the mute switch bracket from SLOT 14 with Curved Tip Tweezers.
- Picture 3: Replace the 2.1 mm screw from SLOT 14.

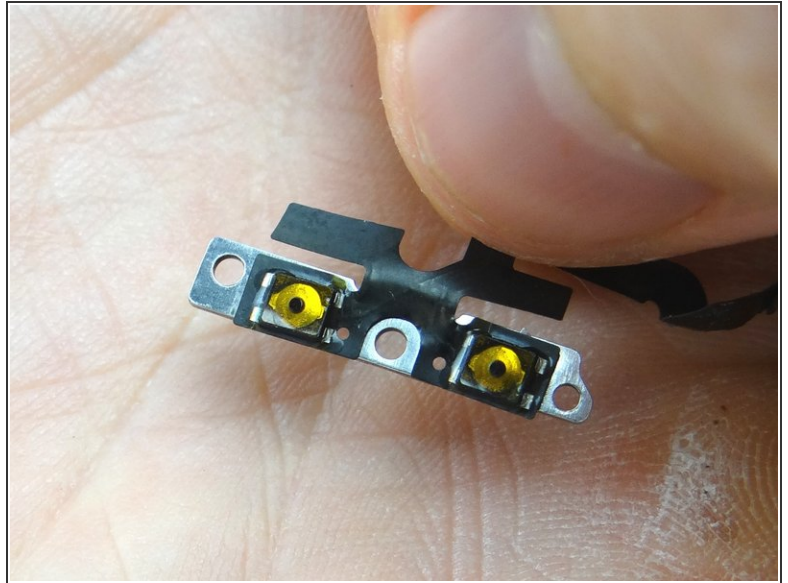
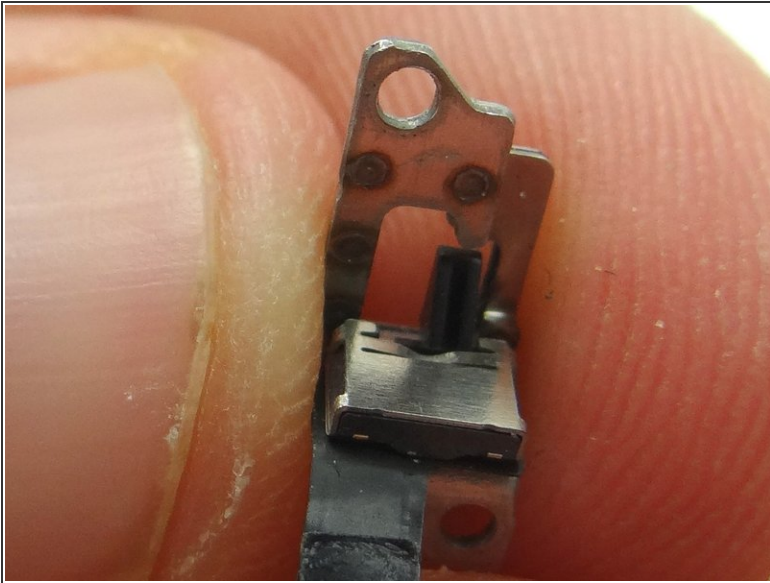
Step 23



- Picture 1: Replace the 1.3 mm screw from SLOT 13.
- Picture 2: Replace the three 1.6 mm screws from SLOT 12.

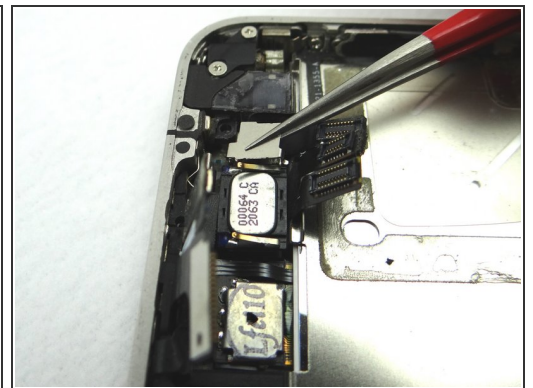
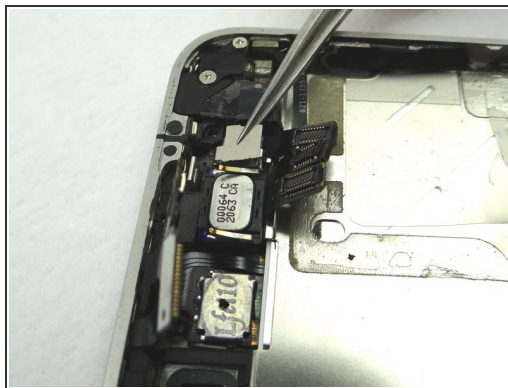
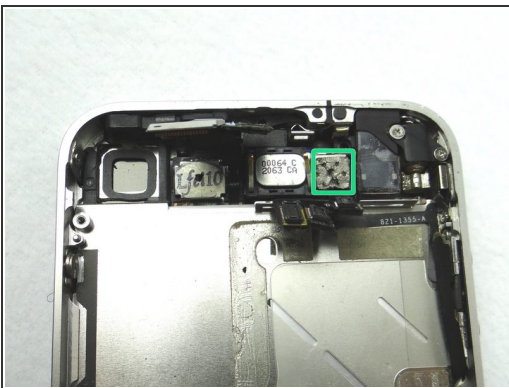
⚠ Make sure the volume button contacts are lined up before re-assembling the phone. The buttons should depress exactly the same as a new iPhone.

Step 24



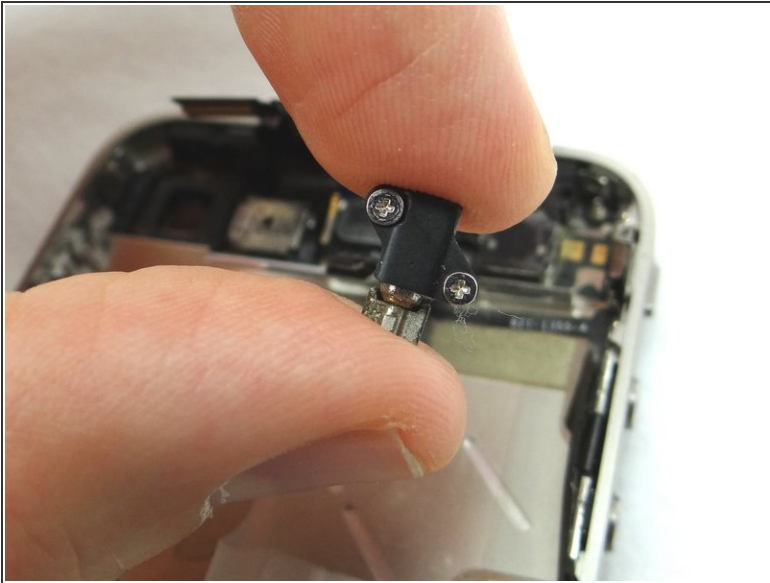
- Picture 1: Replace the mute switch bracket from ZONE V onto the new mute switch.
- Picture 2: Replace the metal bracket from ZONE V onto the new volume button ribbon cable.

Step 25 — Replacement 4.2 - Front Facing Camera



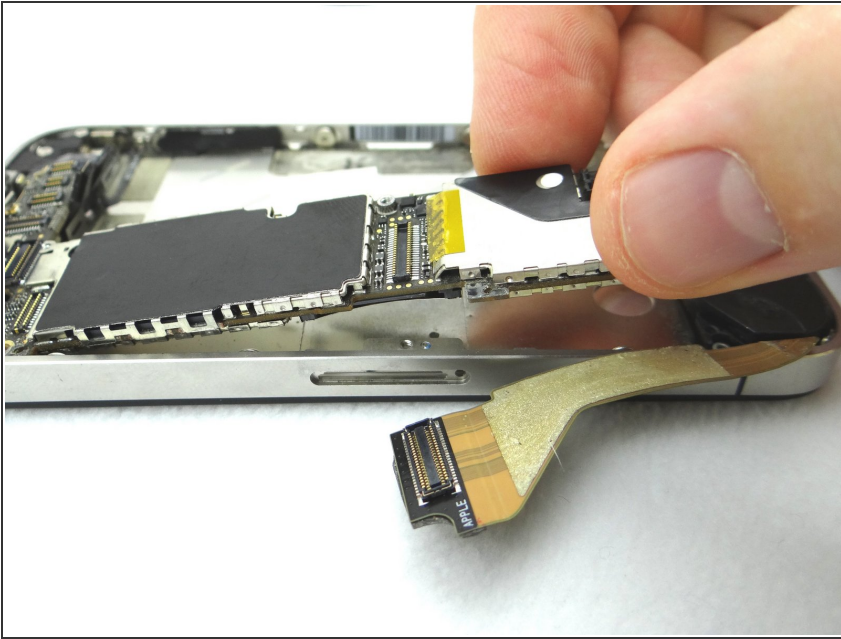
- Place the front-facing camera from COMPARTMENT E into the iPhone.
- Using Curved Tip Tweezers, replace the front-facing camera plate from COMPARTMENT E.

Step 26 — Replacement 5 - Vibrator



- Picture 1 & 2: Replace the vibrator from COMPARTMENT D to its position. Replace the 6 mm screw on the left and the 1.4 mm screw on the right.

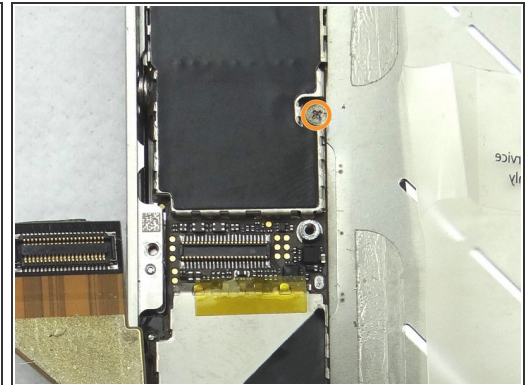
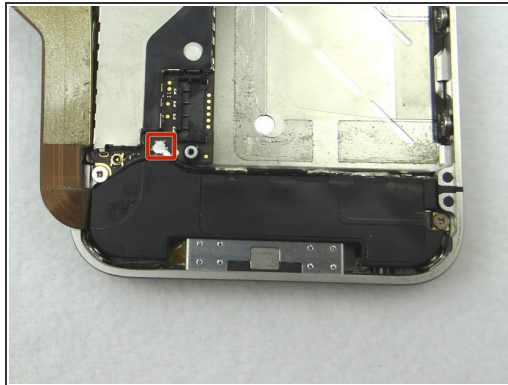
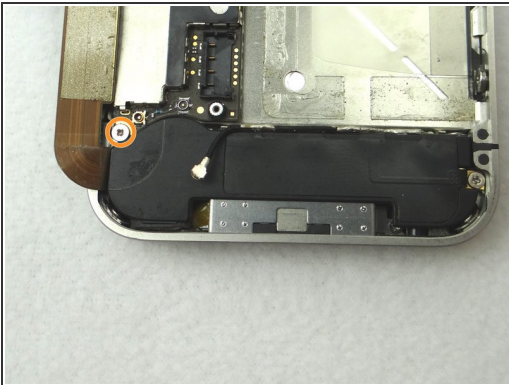
Step 27 — Replacement 4 - Logic Board



- Picture 1: Ensure the rubber washer is in place on the logic board before the logic board is put back into place.
- Picture 2: Grab the logic board from ZONE III and carefully position the top edge into the mid-frame. Make sure the top edge is below the protruding tab on the mid-frame.
- Push the logic board down into its position on the mid-frame.

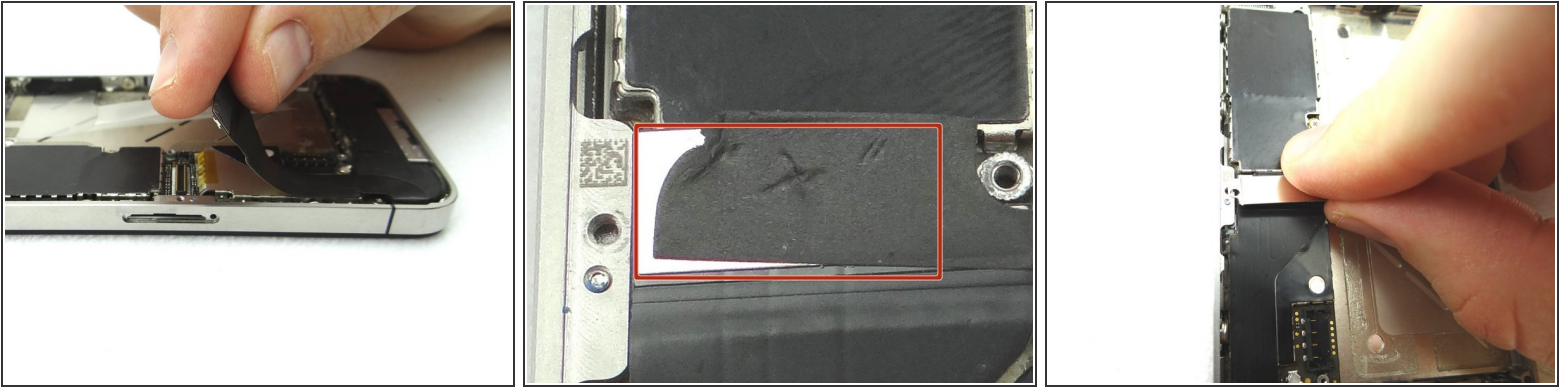
⚠ Make sure no cables get trapped under the logic board while re-installing it.

Step 28



- Picture 1: Replace the 1.9 mm Phillips screw from SLOT 11.
- Picture 2: Push the cellular antenna connector back into its slot on the logic board as in Picture 2.
- Picture 3: Replace the 2.4 mm Phillips screw from SLOT 10.

Step 29



- Picture 1 & 2: Fold the charging port assembly cable back into position and reconnect it to its socket on the logic board.
- Picture 2: Replace the charging port assembly shield from SLOT 9.

Step 30



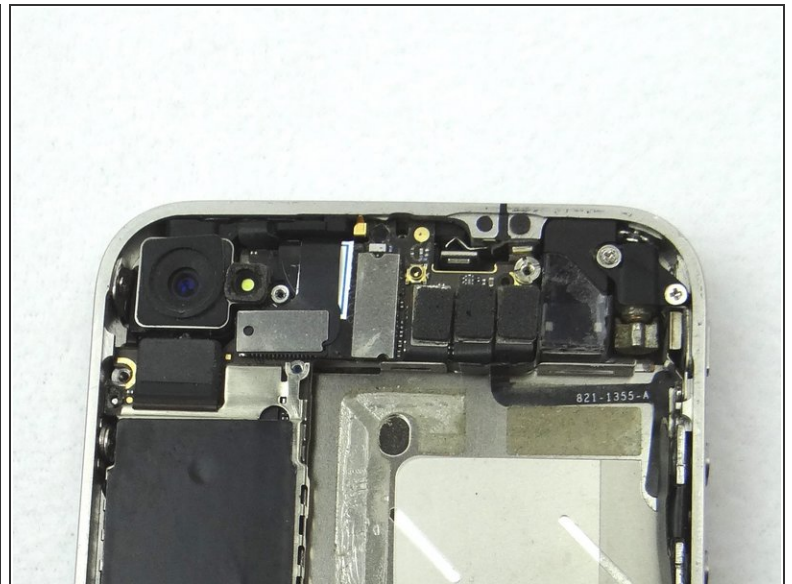
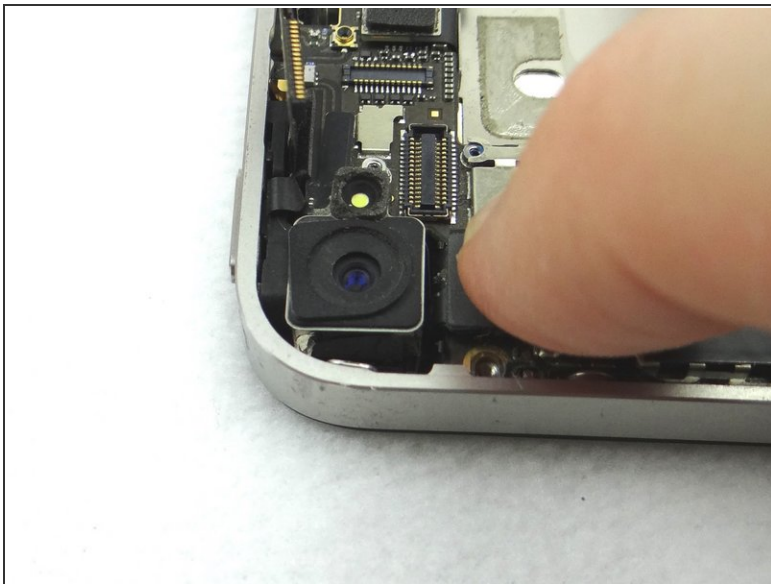
- Picture 1: Replace the 1.6 mm Phillips screw from SLOT 9.
- Picture 2: Replace the 1.2 mm Phillips screw from SLOT 8.
- Picture 3: Replace the 4.8 mm standoff SLOT 7 with a 2.4 mm flathead screwdriver.

Step 31



- Reconnect the ribbon cables marked '1', '2' and '3' to the logic board.
- Picture 1: This is what it should look like after it is reconnected.

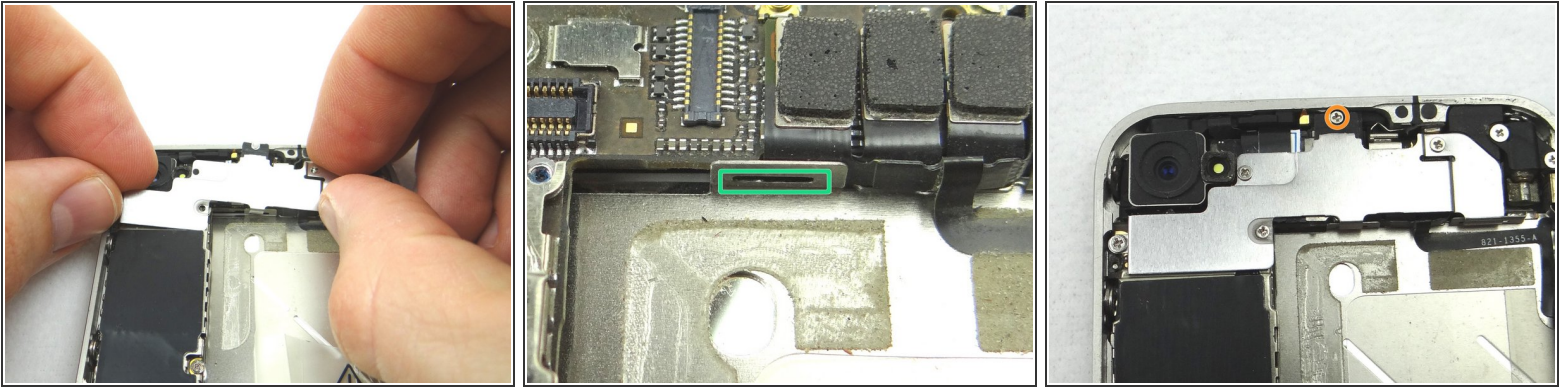
Step 32 — Replacement 3 - Rear Camera



- Picture 1: Replace Rear Camera from COMPARTMENT C (or replacement part). Push connector into socket on logic board.
- Also in Picture 1: Reconnect the digitizer and LCD cables sitting upright.
- Picture 2: This is what you should see after connecting the camera, digitizer and LCD cables.

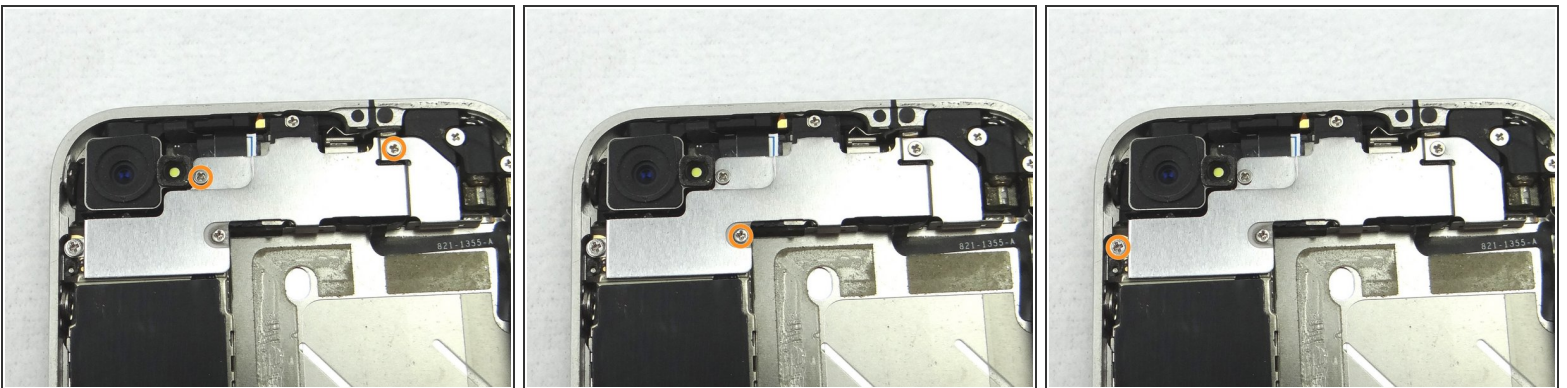
This document was generated on 2022-01-10 04:21:08 PM (MST).

Step 33



- Picture 1: Replace Cable Shield from COMPARTMENT B.
- Picture 2: Position the protruding tabs at the bottom of the Cable Shield into the slots on the EMI Shield (connected to the logic board) below.
- Picture 3: Replace one 4.8 mm Phillips screw from SLOT 6.

Step 34



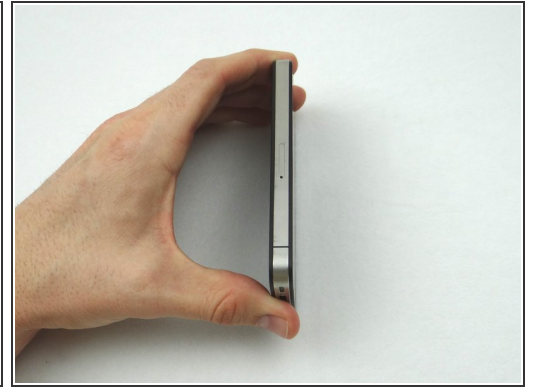
- Picture 1: Replace the two 1.6 mm Phillips screws from SLOT 5.
- Picture 2: Replace one 1.4 mm Phillips screw from SLOT 4.
- Picture 3: Replace one 2.3 mm Phillips screw from SLOT 3.

Step 35 — Replacement 2 - Battery



- Picture 1: Place the battery from ZONE II (or replacement part) in the mid-frame.
- Picture 2: With Fine Point Tweezers, place the T-Shaped Antenna Shield from SLOT 2 between the battery connector and its socket.
- ⓘ Make sure the screw slot on the battery connector lines up with the screw slot on the Antenna Shield, and that they both line up with the screw slot on the battery socket. If needed use tweezers to adjust its position.
- Picture 3: Use the 2.5 mm Phillips screw from SLOT 2 to secure the bottom of the battery connector.

Step 36 — Replacement 1 - Battery Cover



- Picture 1: Replace battery cover from ZONE I (or replacement part). Gently slide battery cover downward until it locks into place.
- Picture 2: Place the handset in your non-dominant hand, then replace two Pentalobe screws near charging port with special 5-point Pentalobe screwdriver. The screws are in SLOT 1.
- Picture 3: Replace the SIM card and SIM card tray from Sandbox COMPARTMENT A.