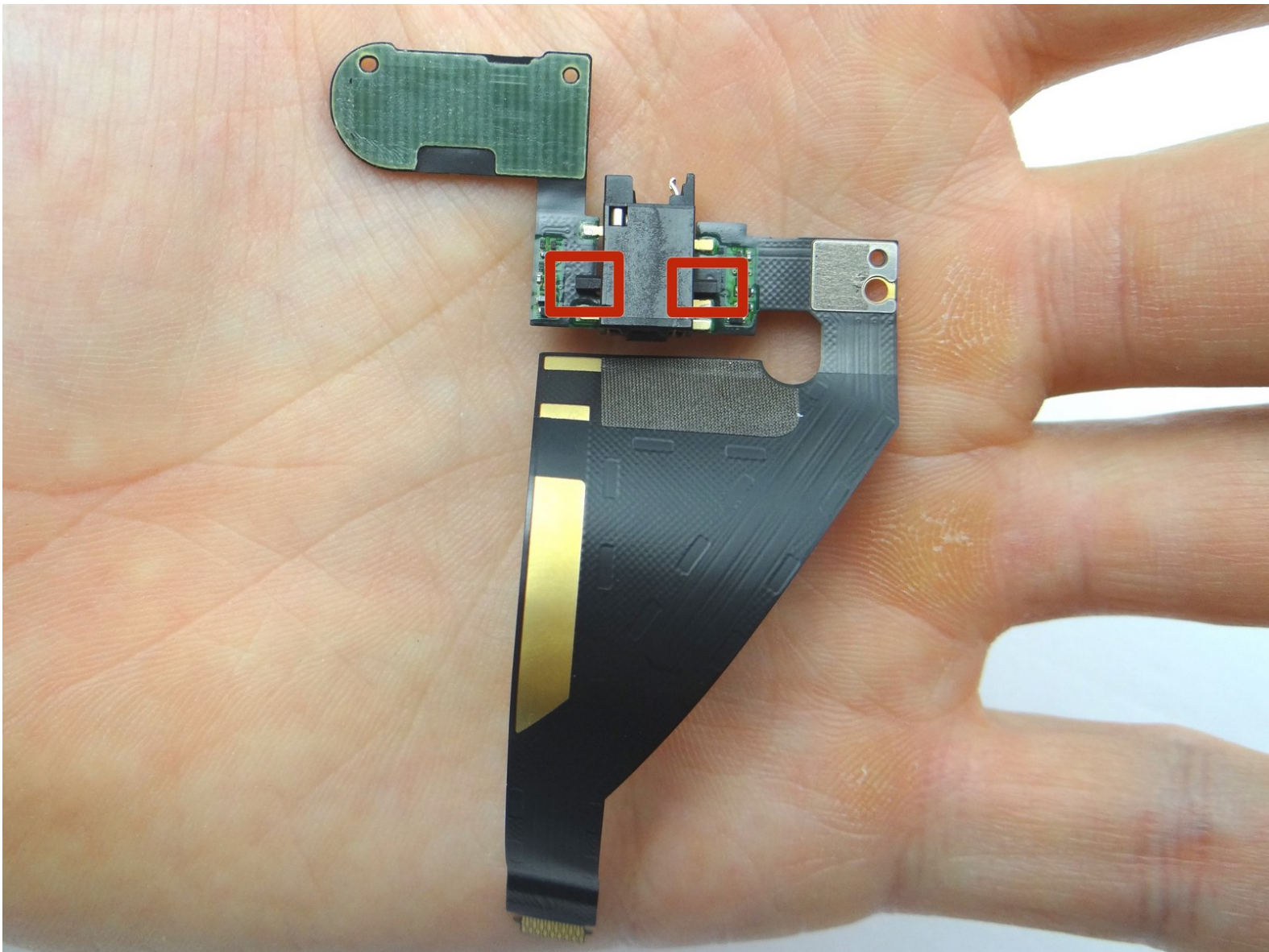


CELLPHONESANDBOX

Manual 04 - Headphone Jack + Volume Rocker Contacts (Empty Bracket)

Written By: James Linder

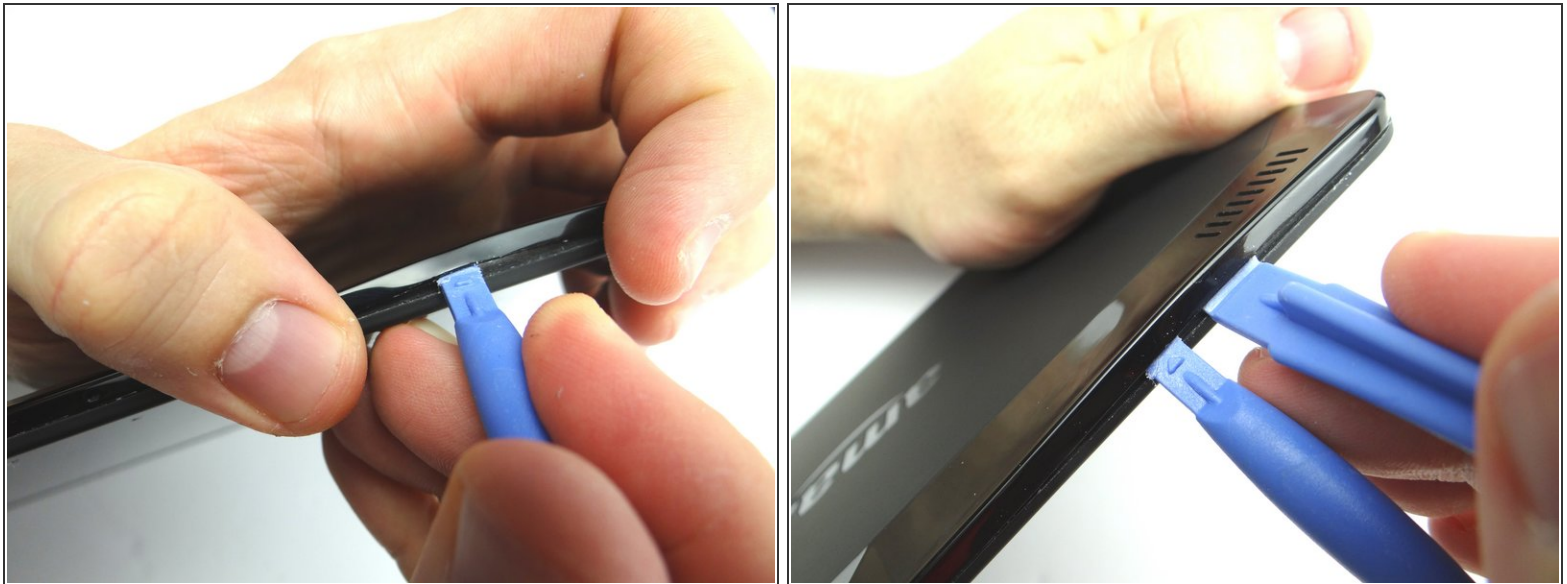


Step 1 — Removal 1 - Display Assembly



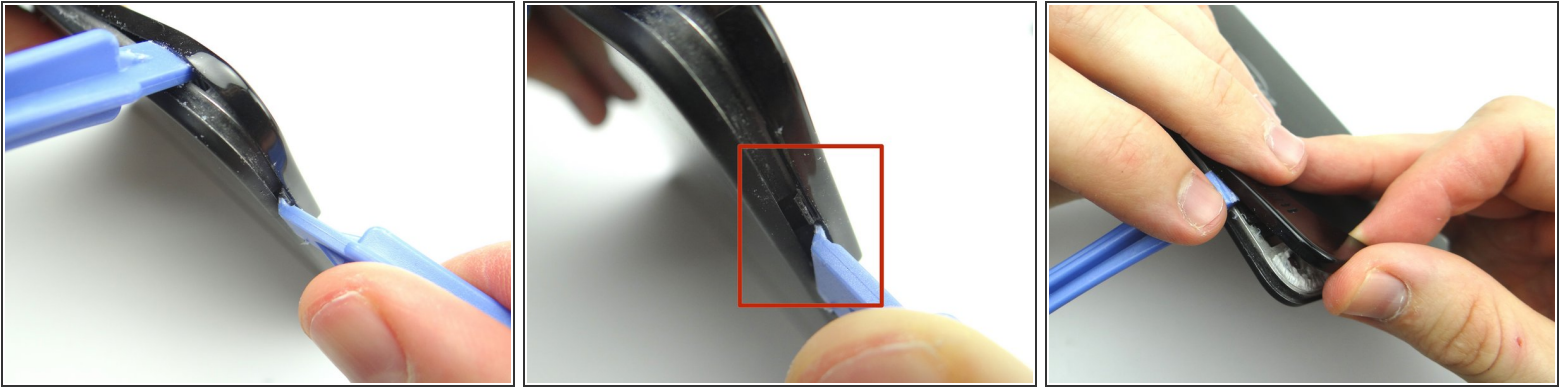
- Power down the device.
- i* You'll be removing the trim (red square) in the next few steps:
- Apply low level heat (100° Celcius) to the corner of the trim.

Step 2



- To begin removing the trim: insert blue pry tool face up between the rear camera and the corner.
- Insert a wide blue pry tool (just right of the first pry tool) and work towards the corner near the volume buttons.

Step 3



- Pictures 1 & 2: Use a blue pry tool (face up) to pry up the bottom of the trim near the volume rocker. Gently pry up to release the tab (red square).
- Picture 3: Using your fingers, gently pry up the corner of the rear trim.

Step 4



- Picture 1: Use the wide blue pry tool to work your way towards the camera.
- ⓘ Picture 2: Apply heat as needed.
- Picture 3: Use the flat end of the spudger to cut through adhesive.

Step 5



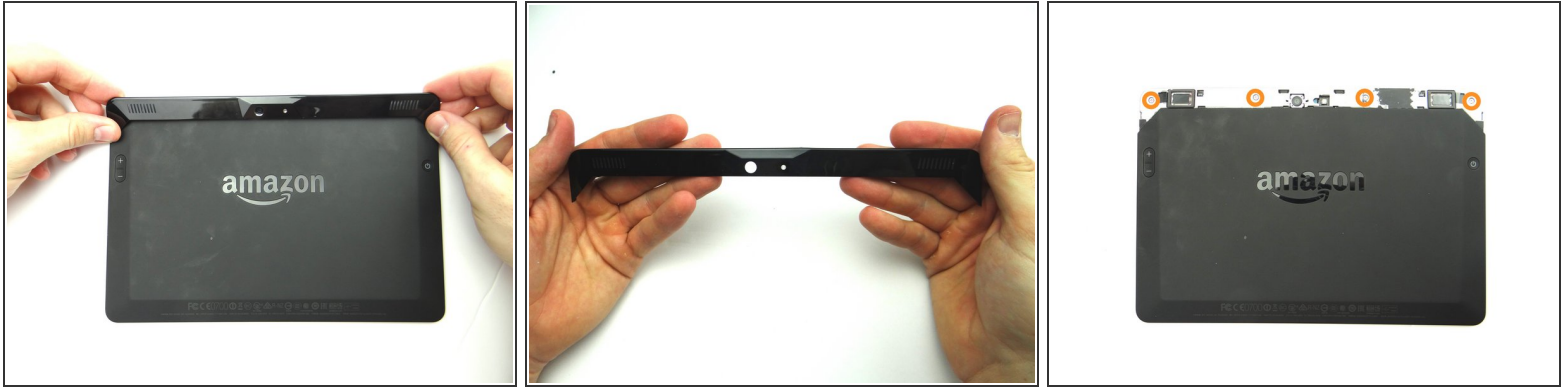
- Apply low level heat (100° Celcius) from the center to the power button.
- Work your way towards the corner.

Step 6



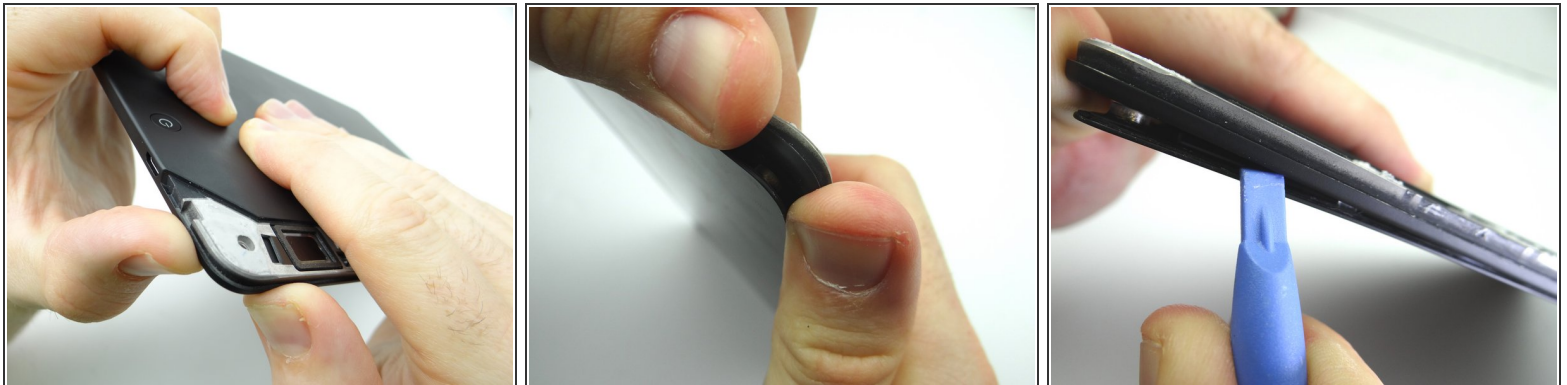
- Gently lift the trim using your fingers to expose the remaining adhesive.
- Use the flat end of the spudger to cut through it.

Step 7



- Picture 1 & 2: Finish removing the rear trim with your fingers and place in ZONE I.
- Picture 3: Remove four pink 3.5 mm T5 Torx screws. Place in SLOT 1.

Step 8



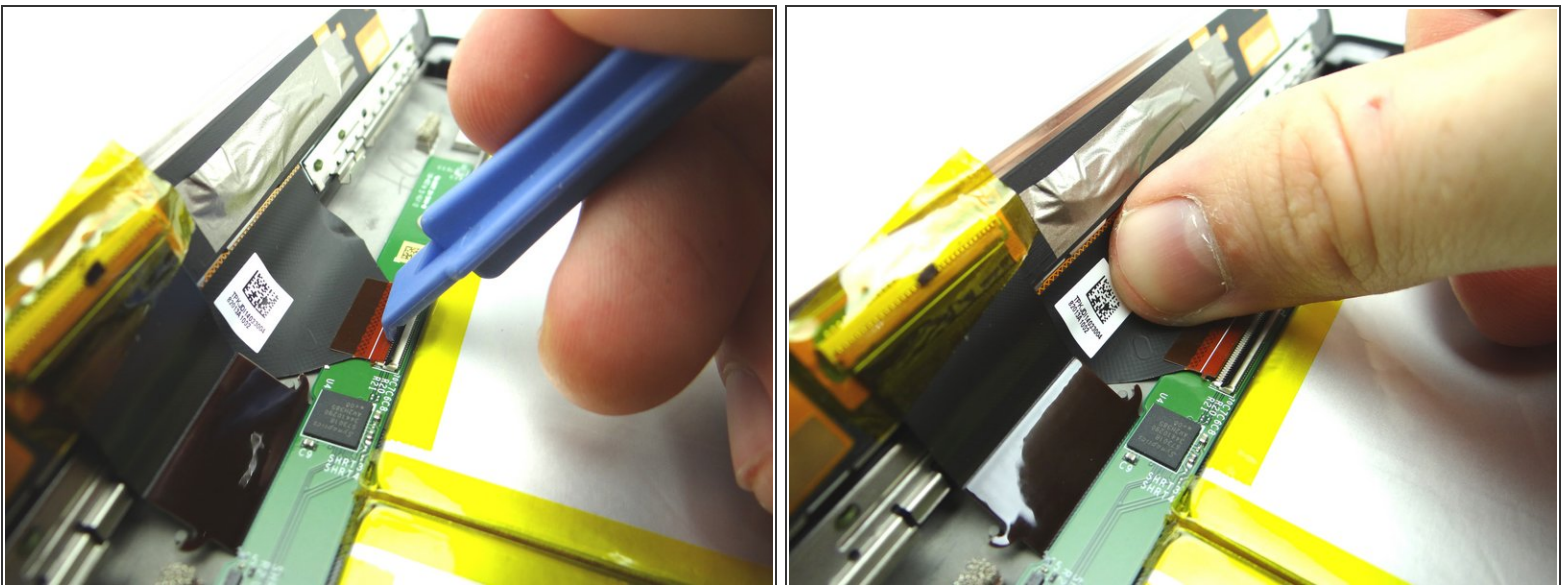
- Pictures 1 & 2: Using your thumbs, apply pressure to the rear case in the corner near the power button to begin separating the display assembly from the rear case.
- Picture 3: Insert a blue pry tool along the top edge between the display assembly and rear case.

Step 9



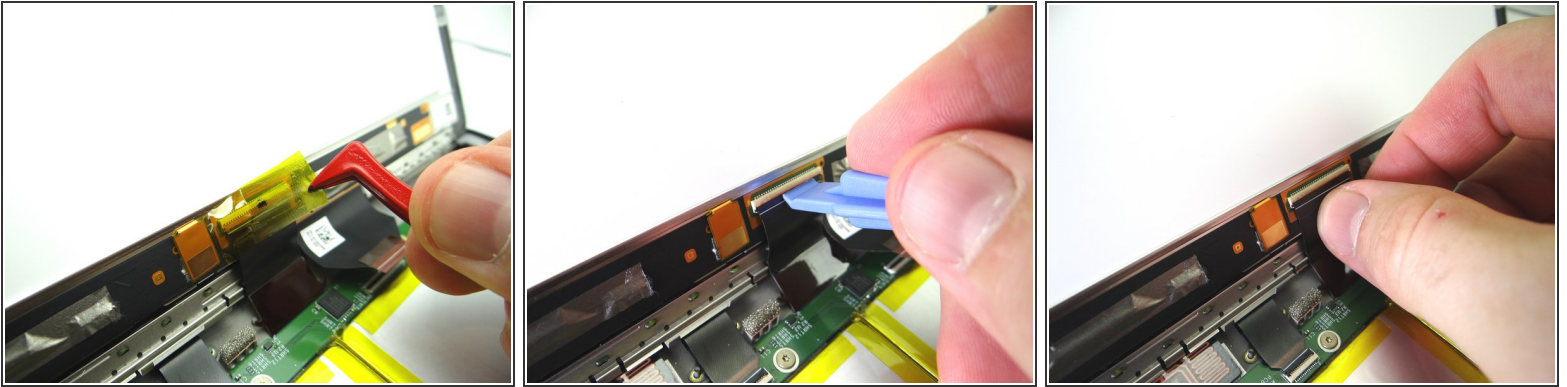
- Picture 1: Hold the corner open with your finger while using the blue pry tool to release the clips along the top of the display assembly.
- Picture 2: Open the screen like a book until all clips are released.
- Picture 3: Lay the rear case on the table with the display assembly open at a 90° angle, as shown.
- In the next couple step you'll release the display cables (red square):

Step 10



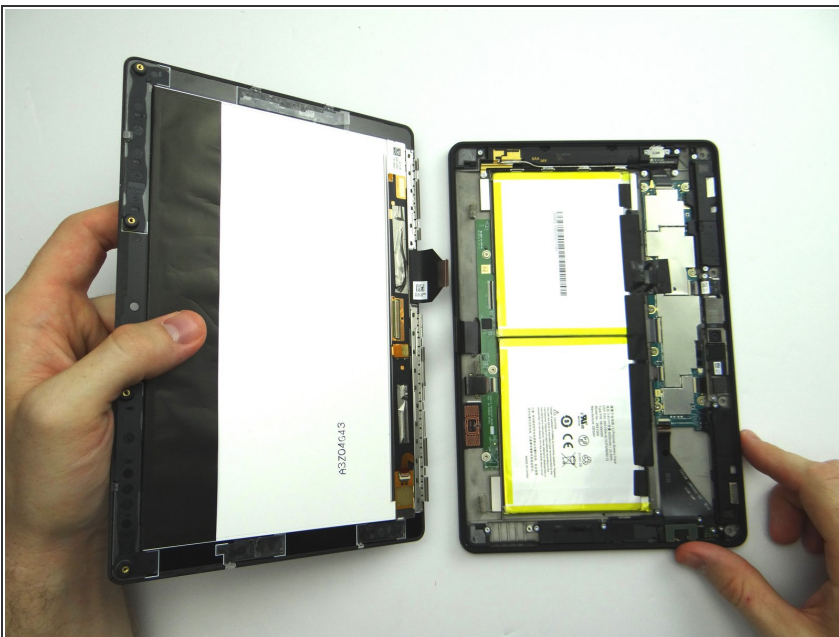
- Use the wide blue pry tool to move the ZIF connector black bar into open position as shown.
- Gently guide the display cable out of the ZIF connector.

Step 11



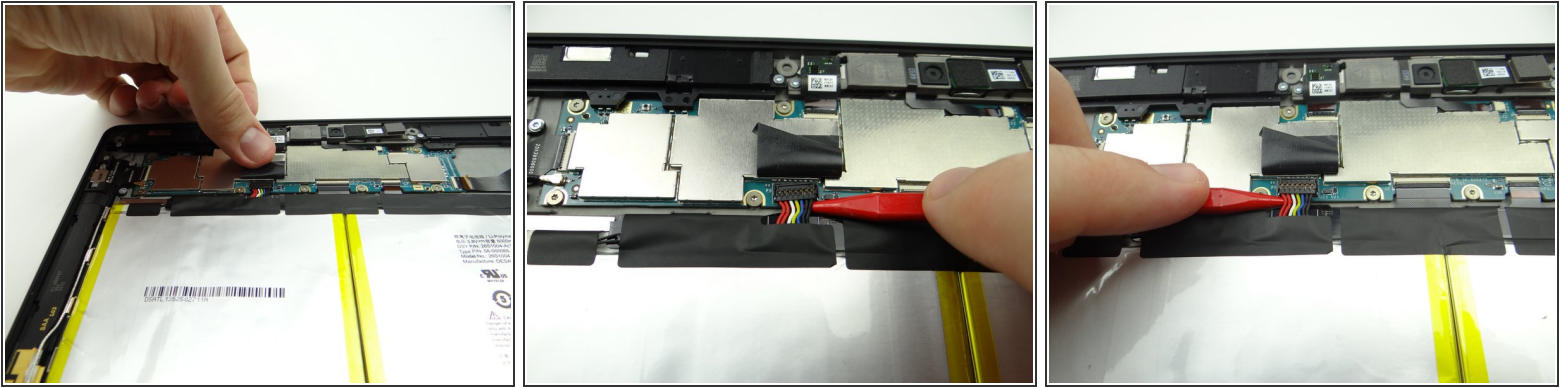
- Picture 1: Peel up yellow Kapton tape with plastic tweezers. Adhere the tape to the wall of COMPARTMENT A.
- ⓘ You'll need a piece of Kapton tape for reassembly to help hold this display cable in place.
- Picture 2: Use the wide blue pry tool to open the brown bar of the ZIF connector.
- Picture 3: Gently guide the cable out of the ZIF connector.

Step 12




- Separate the Display Assembly from the Rear Case. Place them in the sandbox.

Step 13 — Removal 2 - Disconnect Battery (before going on)



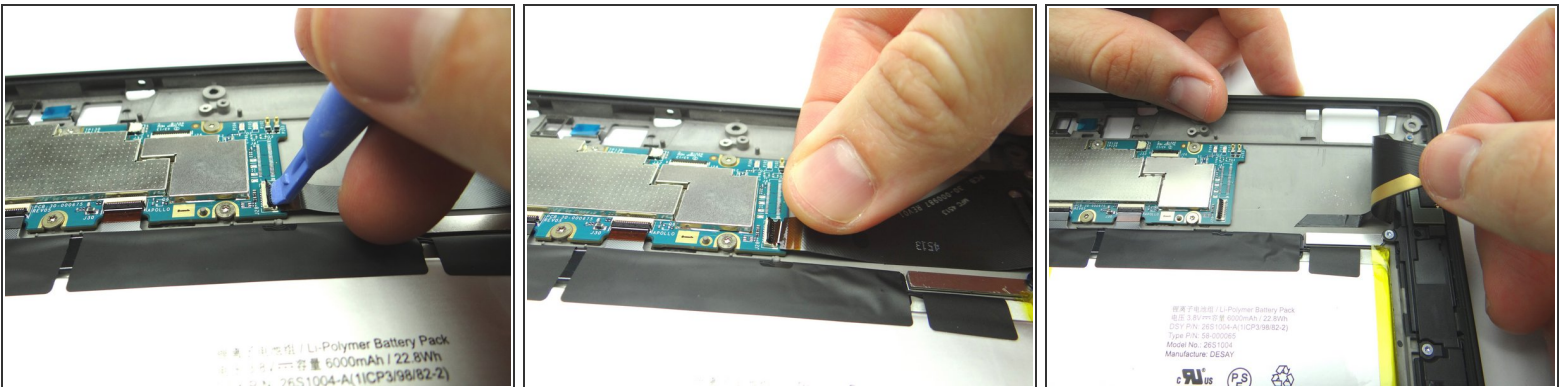
- Picture 1: Peel tape back to expose battery connector.

 Leave tape connected to the logic board as shown.

 **Work slowly and carefully as you pry up the battery connector:**

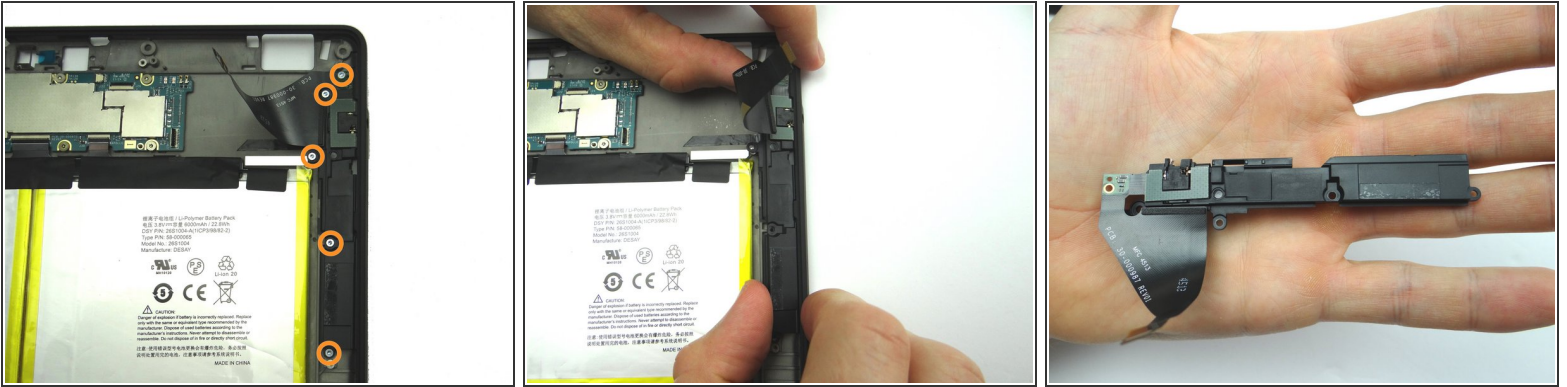
- Picture 2: Use the pointed end of the spudger to pry up right side of battery connector slightly.
- Picture 3: Lift the battery connector straight up from the left side.

Step 14 — Removal 4.3 - Bracket - Headphone Jack & Volume Rocker Contacts



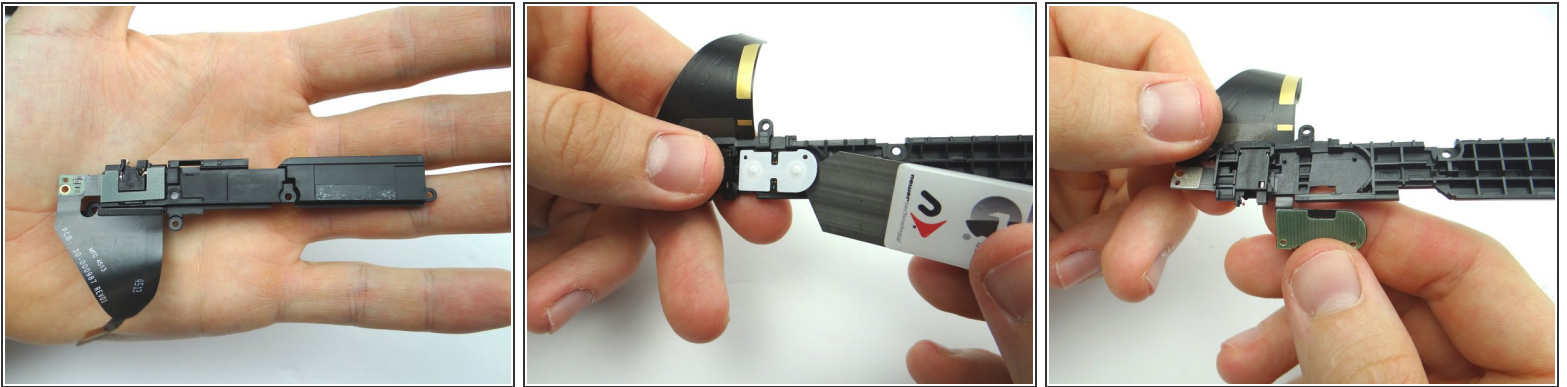
- Picture 1: Open ZIF connector for headphone jack & volume rocker cable.
- Picture 2: Pull cable from ZIF connector.
- Picture 3: Peel up cable to free it from the mild adhesive on the rear case.

Step 15



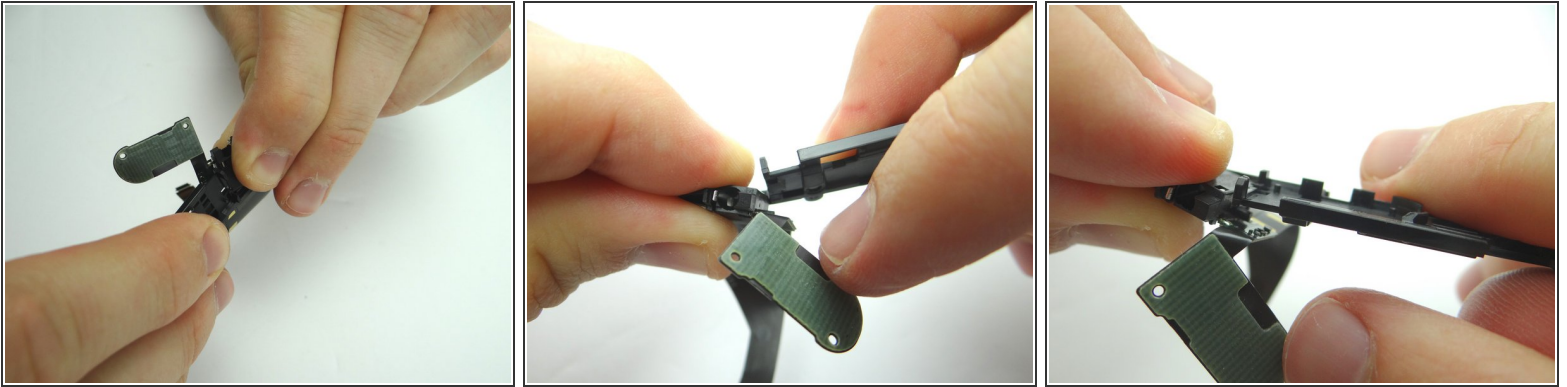
- Remove five 2.7 mm T5 Torx screws. Place in SLOT 2.
- Peel up bracket with your fingers. If you're done with this assembly for now, place it in the sandbox.

Step 16 — Removal 4.4 - Volume Contact Pad / Headphone Jack



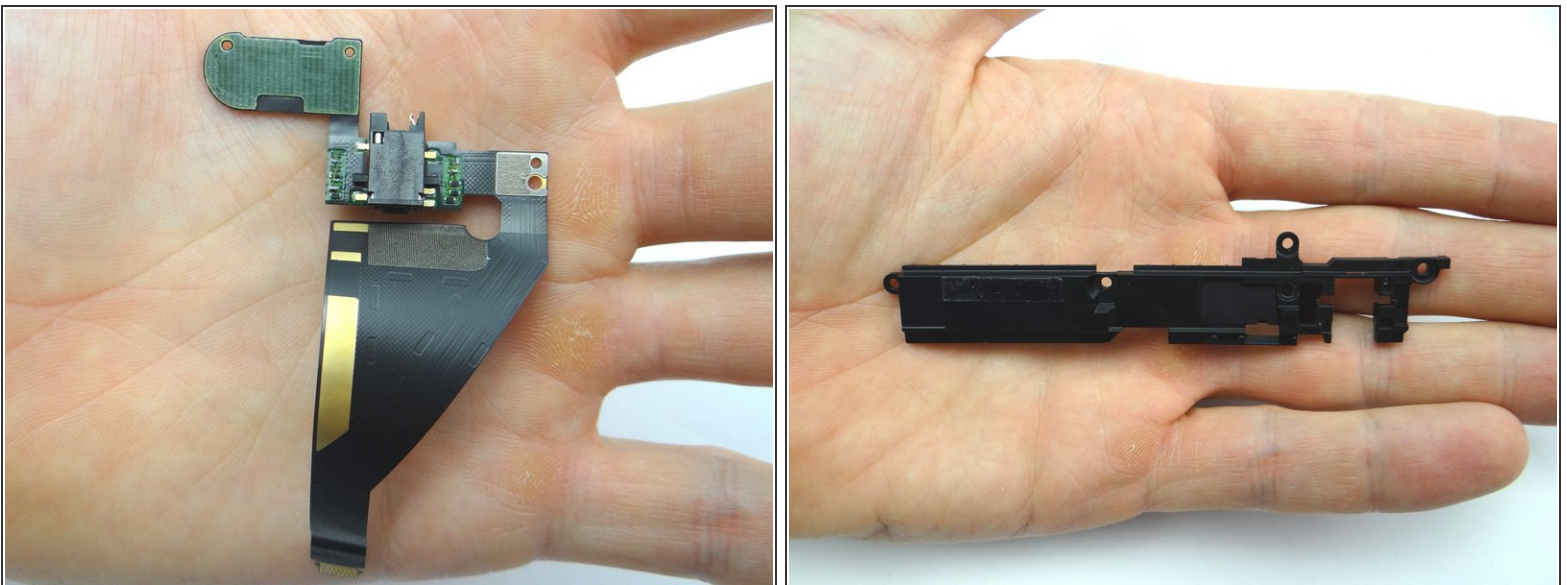
- Use an iSesamo to carefully wedge under the volume rocker contact pad. Pry up just enough to grab it with your fingers.
- Peel contact pad away from bracket with your fingers.

Step 17



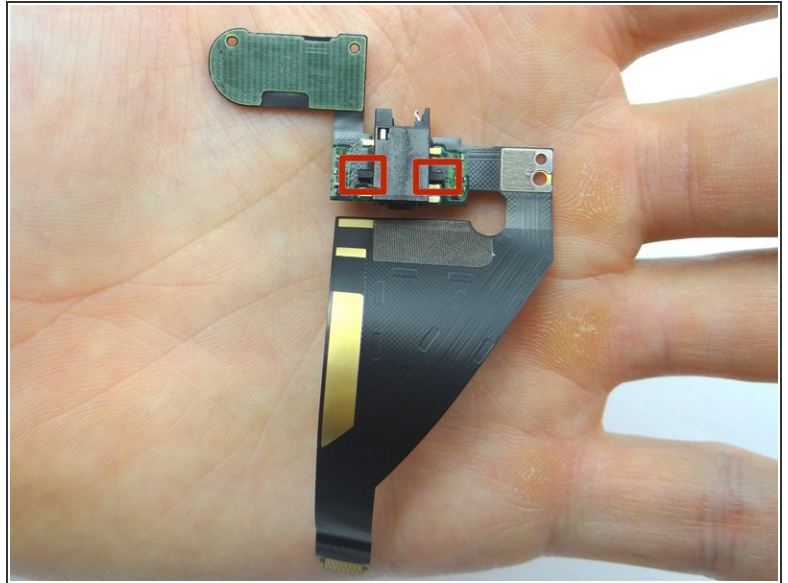
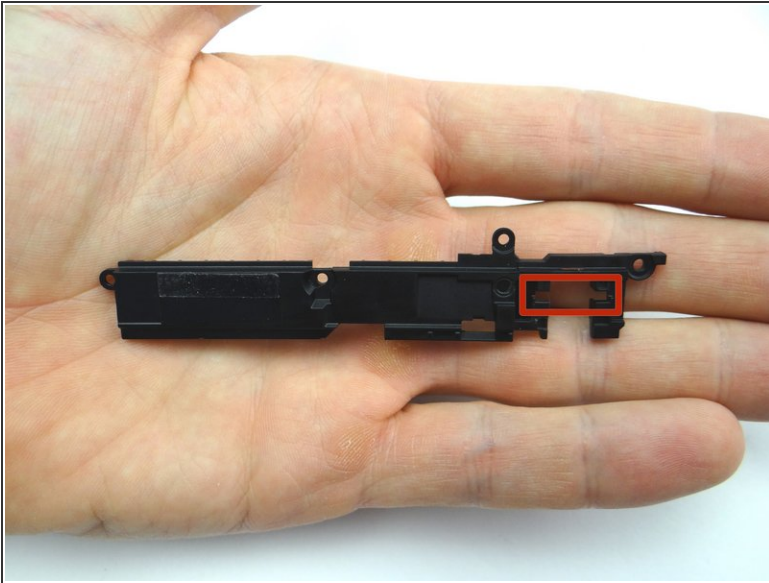
- Push headphone jack free from the bracket with your fingers.

Step 18



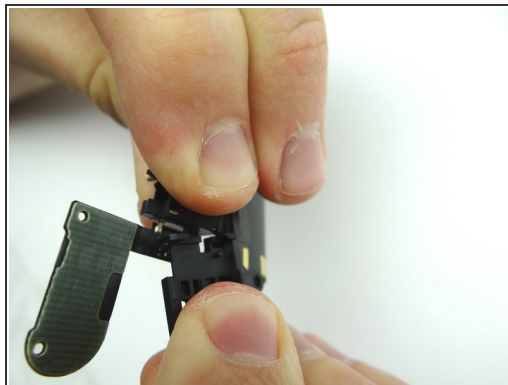
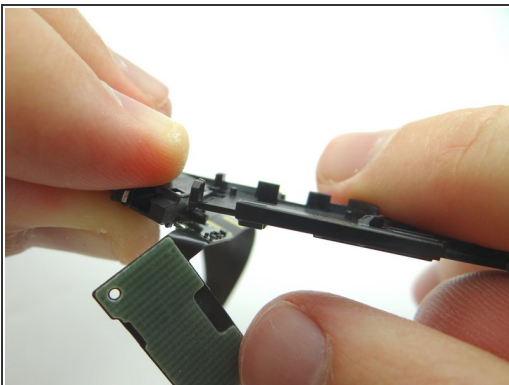
- Place headphone jack & volume rocker contact pad assembly in sandbox.
- Place empty bracket in sandbox.

Step 19 — Replacement 4.4 - Volume Contact Pad / Headphone Jack



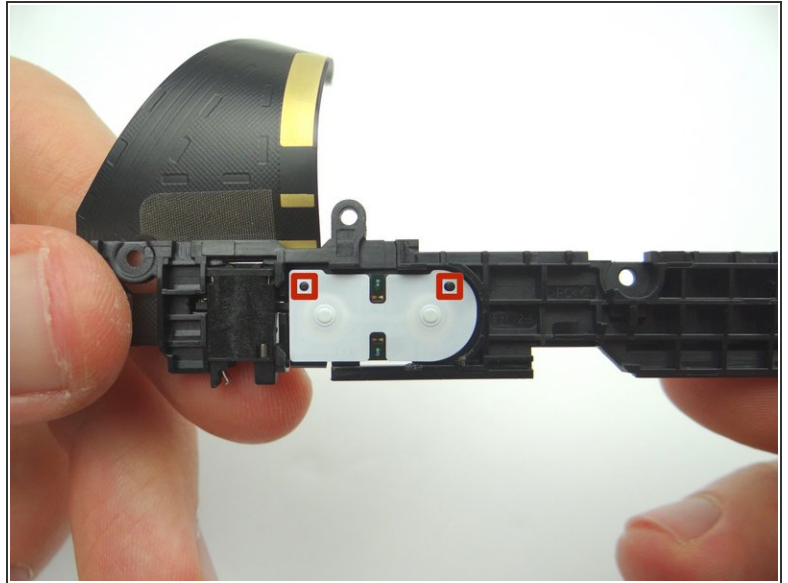
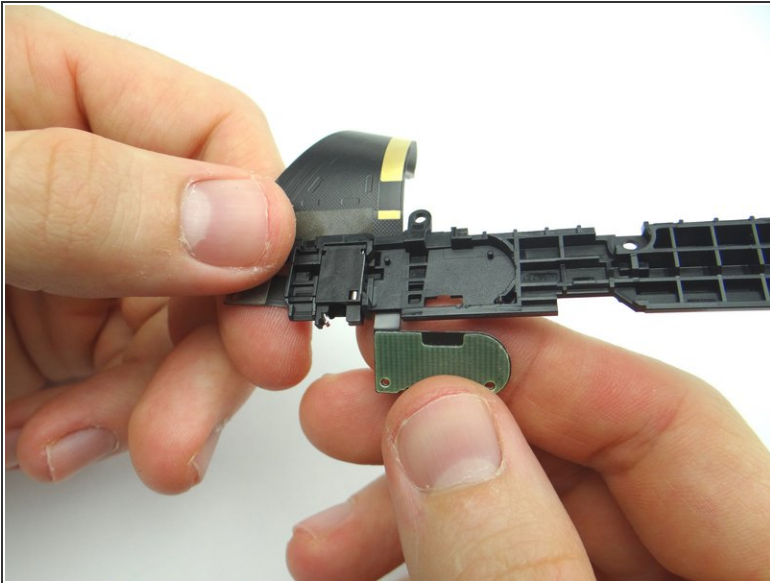
- Retrieve bracket.
- Retrieve headphone jack & volume contact pad cable.
- In the next couple steps, you'll fold the cable onto the bracket. Start by lining up the tabs on the headphone jack with their openings on the bracket (red squares).

Step 20



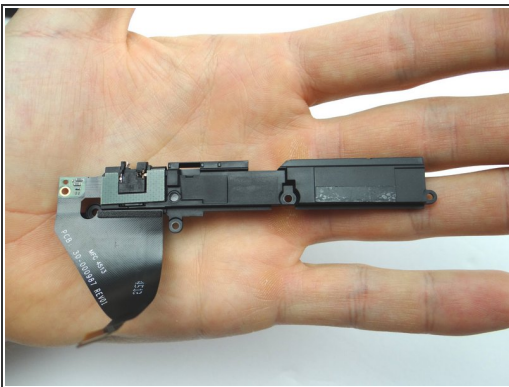
- Fold headphone jack into its socket on the bracket and snap it into place.

Step 21



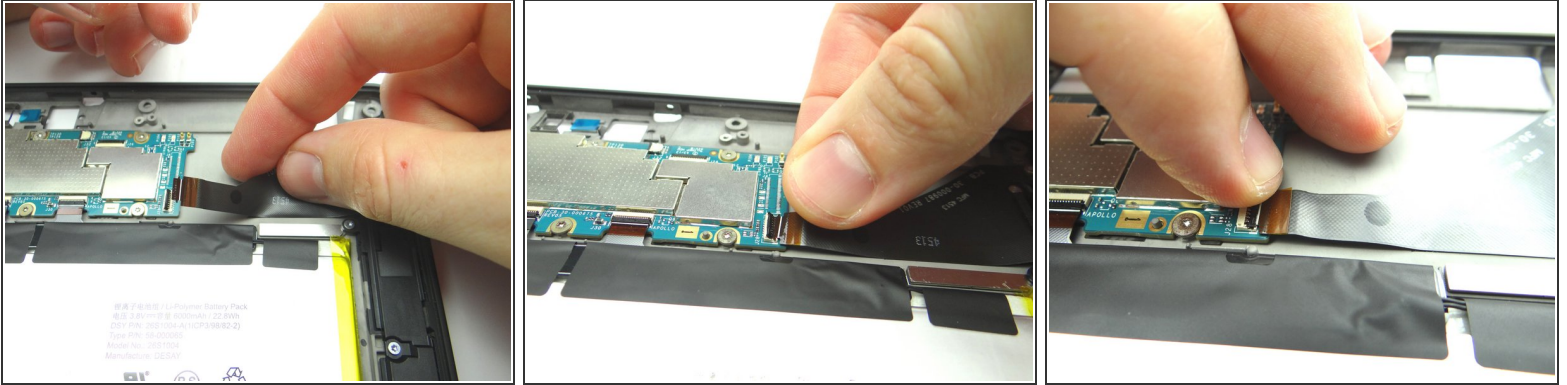
- Seat volume contact pad:
- Line up openings on contact pad with tabs on bracket. Fold contact pad onto bracket and push firmly into place.

Step 22 — Replacement 4.3 - Bracket - Headphone Jack & Volume Rocker Contacts



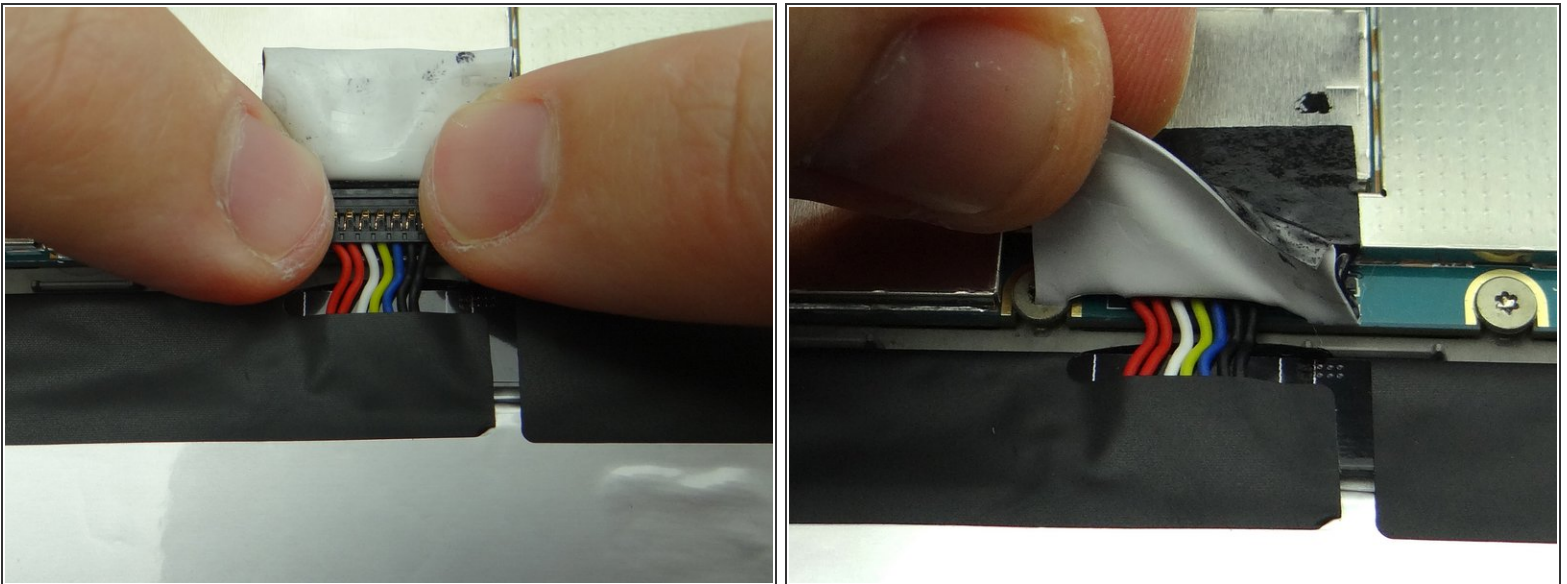
- Seat headphone jack bracket:
- Guide headphone jack into its socket first then finish seating the bracket.
- Picture 3: Replace five 2.7 mm T5 Torx screws from SLOT 2.

Step 23



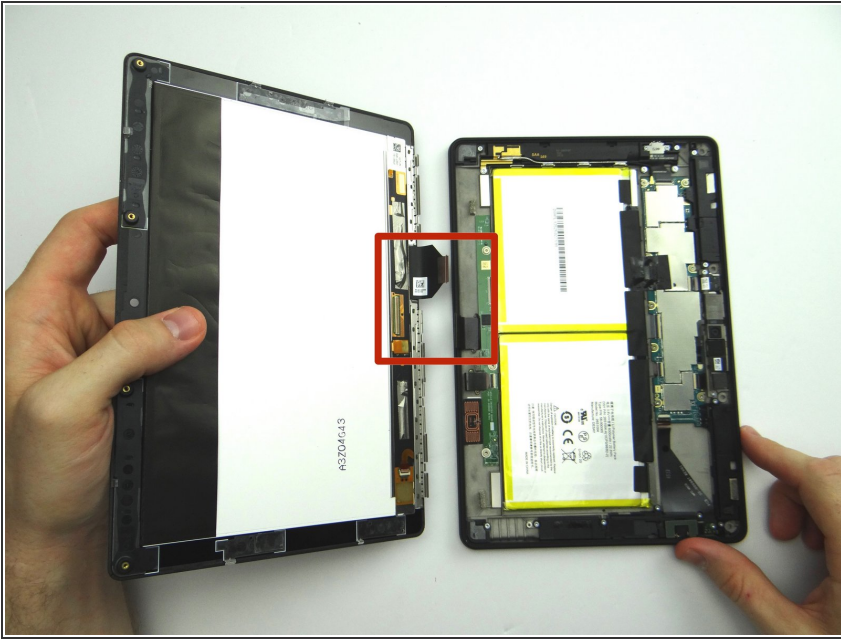
- Picture 1: Line up cable with ZIF connector and adhere it to rear case.
- Picture 2: Seat cable in open ZIF connector with your fingers.
- Picture 3: Close ZIF connector.

Step 24 — Replacement 2 - Connect Battery



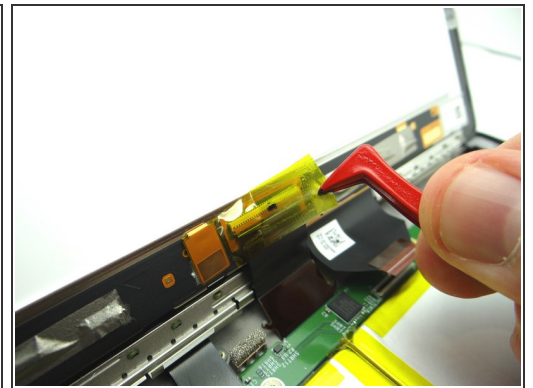
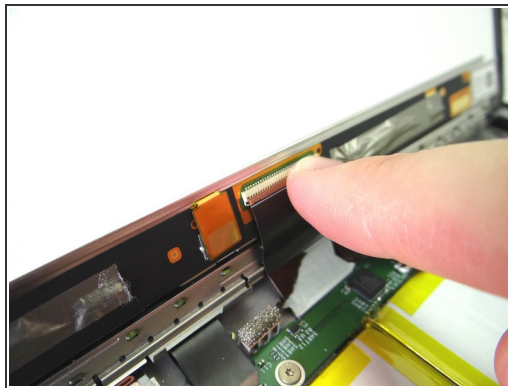
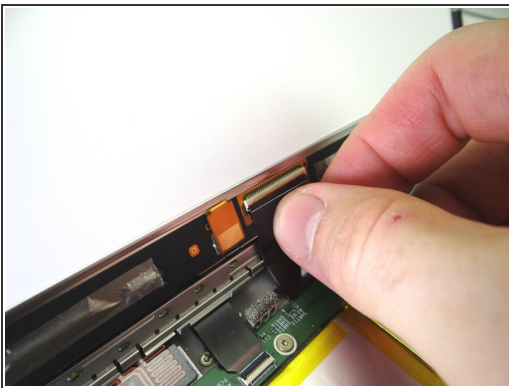
- Push battery connector straight down into its socket on the logic board.
- Fold down tape to cover the battery connector.

Step 25 — Replacement 1 - Display Assembly



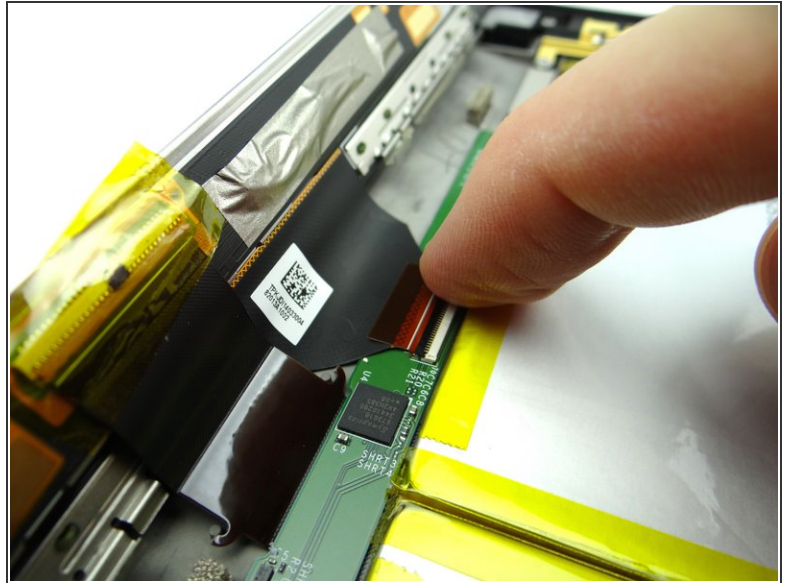
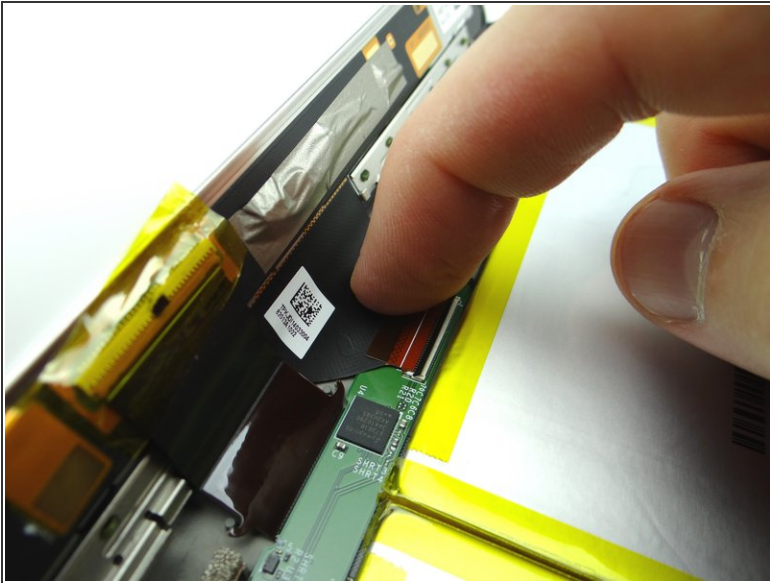
- Bring the display assembly to the rear case to attach the two display cables.

Step 26



- Picture 1: Insert the rectangular display cable into the ZIF connector.
- Picture 2: Close the ZIF connector with your finger.
- Picture 3: Cover ZIF connector with Kapton tape from COMPARTMENT A.

Step 27



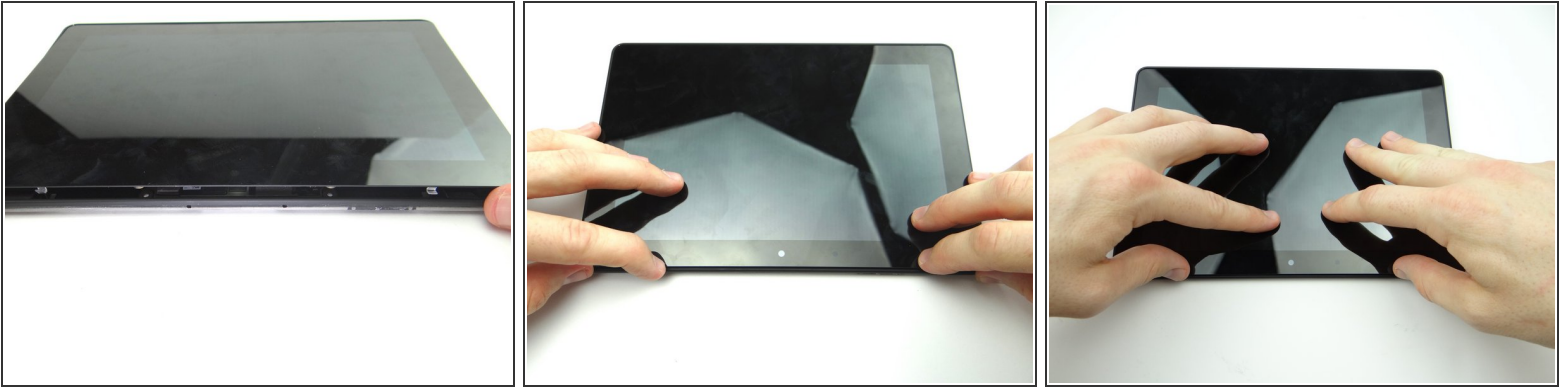
- Guide the triangular display cable into the ZIF connector using your finger.
- Close the ZIF connector.

Step 28



- Align the clips (red squares) along the bottom of the display assembly with their slots on the rear case.

Step 29



- Pictures 1 & 2: Press the top of the display assembly firmly into the rear case to secure the clips along the top edge.
- Picture 3: Press firmly on the display assembly to ensure all clips are seated correctly.

Step 30



- Picture 1: Replace four pink 3.5 mm T5 Torx screws from SLOT 1.
- Picture 2: Replace the rear trim piece from ZONE I.
- Picture 3: Apply low level heat (100° Celcius) to help the adhesive re-adhere.

Step 31



- Power up and test the device.