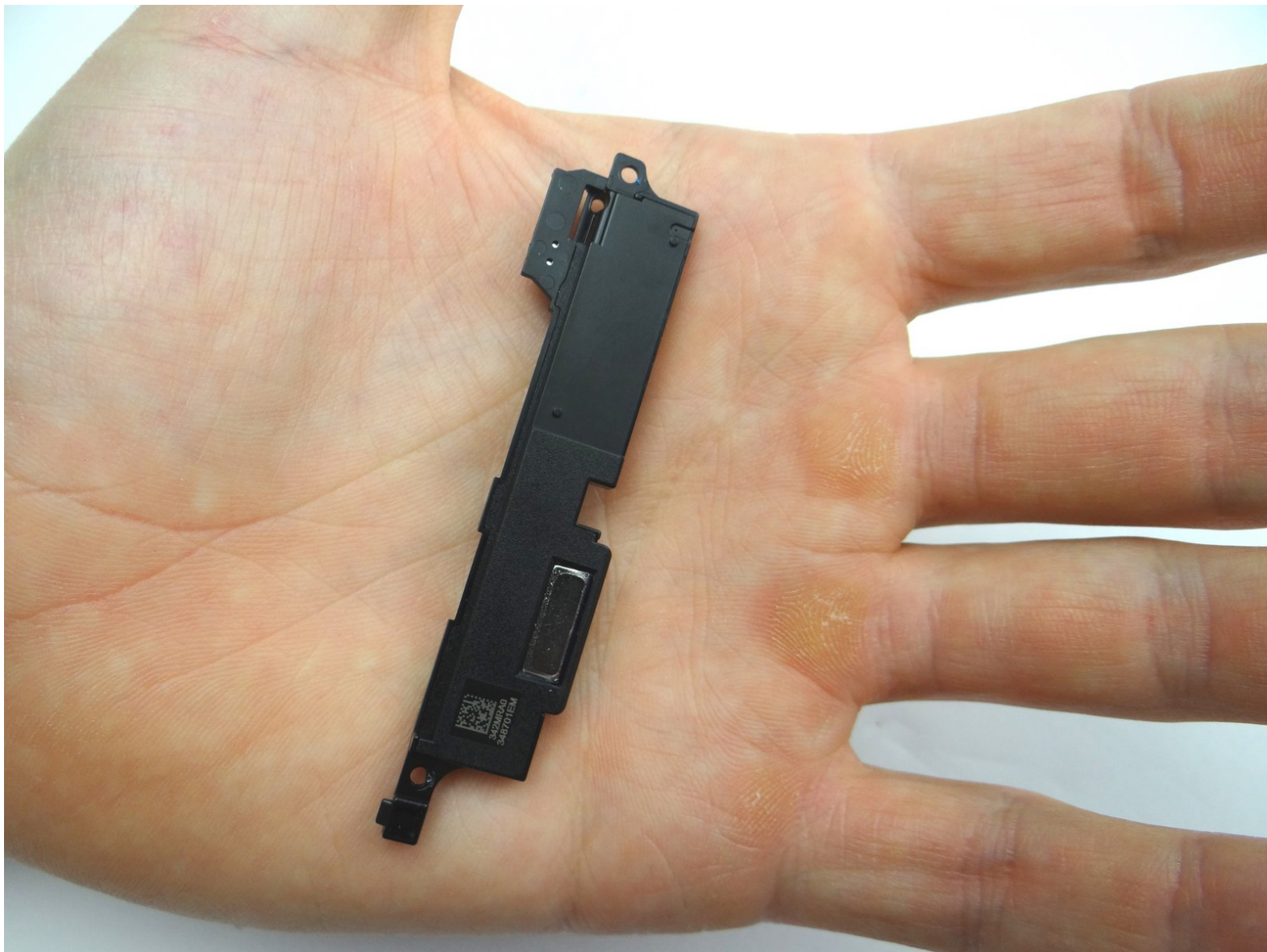


CELLPHONESANDBOX

Manual 06 - Speakers

Written By: James Linder

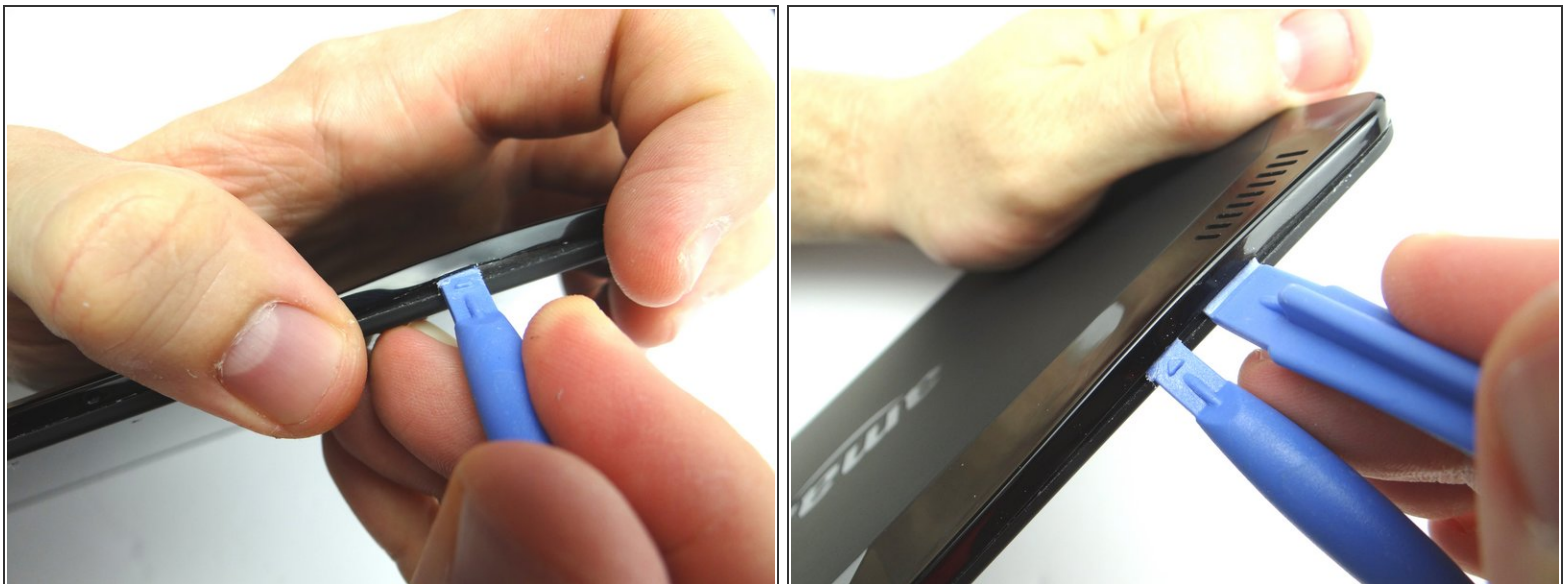


Step 1 — Removal 1 - Display Assembly



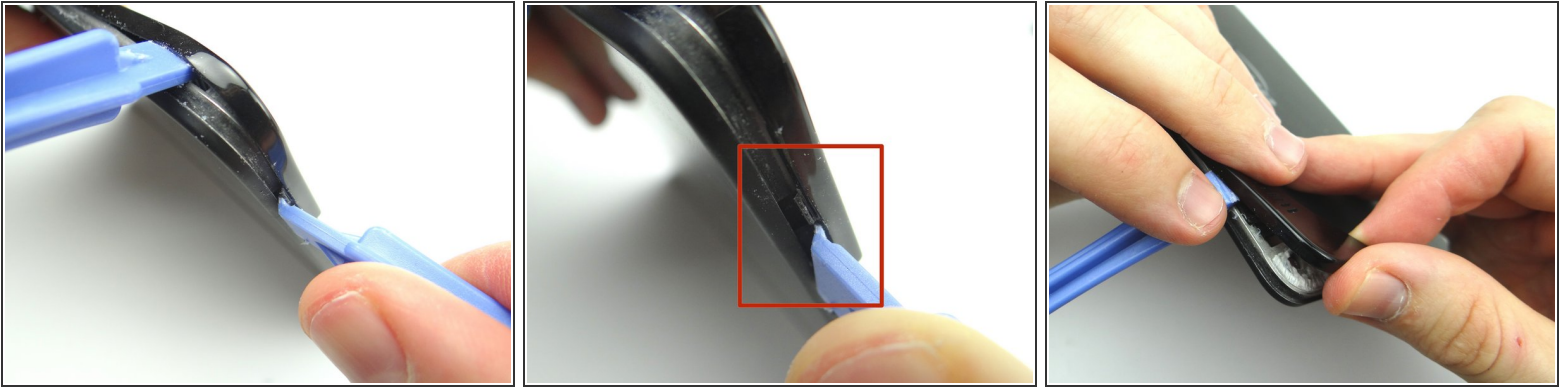
- Power down the device.
- ⓘ You'll be removing the trim (red square) in the next few steps:
- Apply low level heat (100° Celcius) to the corner of the trim.

Step 2



- To begin removing the trim: insert blue pry tool face up between the rear camera and the corner.
- Insert a wide blue pry tool (just right of the first pry tool) and work towards the corner near the volume buttons.

Step 3



- Pictures 1 & 2: Use a blue pry tool (face up) to pry up the bottom of the trim near the volume rocker. Gently pry up to release the tab (red square).
- Picture 3: Using your fingers, gently pry up the corner of the rear trim.

Step 4



- Picture 1: Use the wide blue pry tool to work your way towards the camera.
- ⓘ Picture 2: Apply heat as needed.
- Picture 3: Use the flat end of the spudger to cut through adhesive.

Step 5



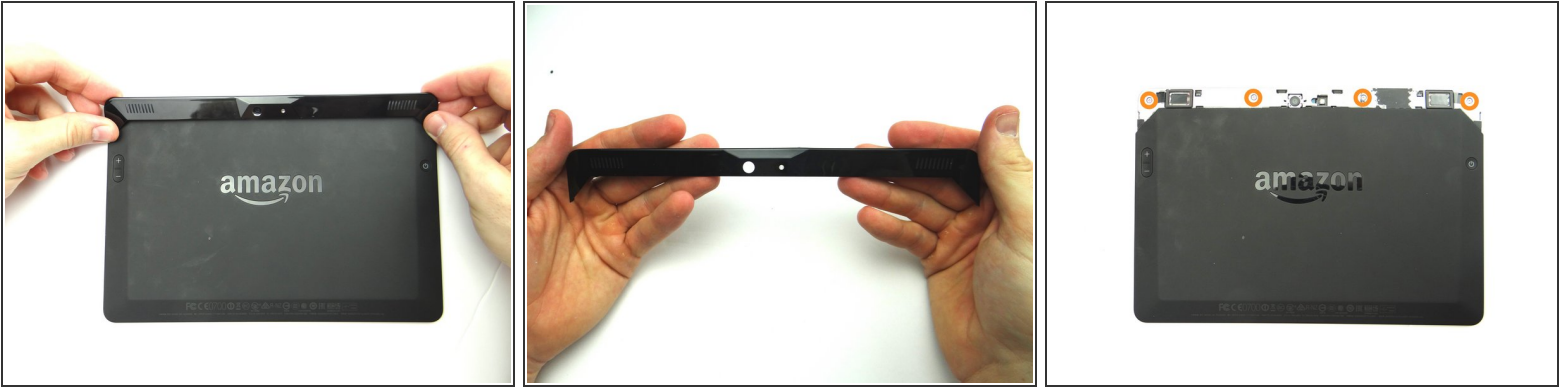
- Apply low level heat (100° Celcius) from the center to the power button.
- Work your way towards the corner.

Step 6



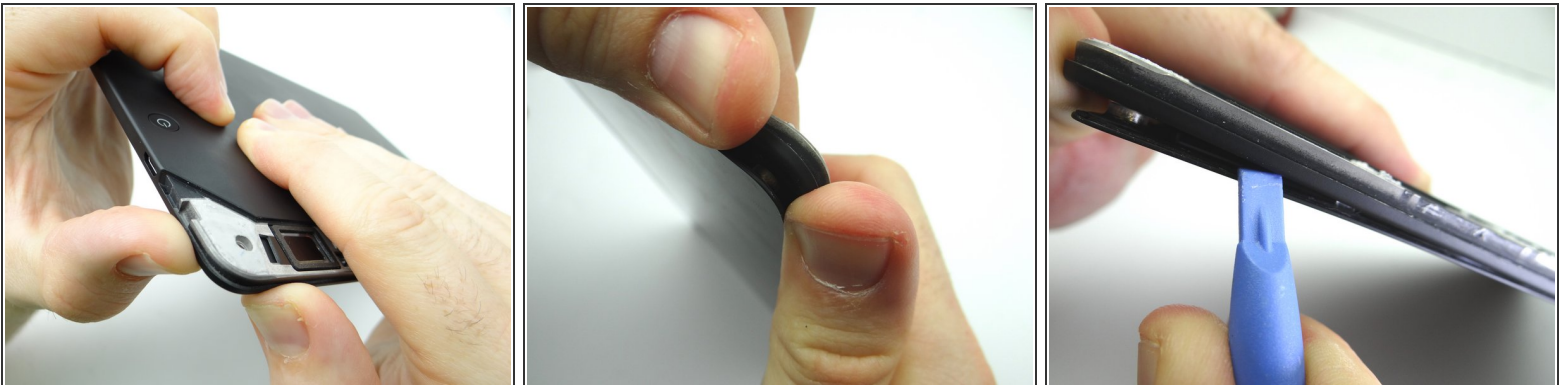
- Gently lift the trim using your fingers to expose the remaining adhesive.
- Use the flat end of the spudger to cut through it.

Step 7



- Picture 1 & 2: Finish removing the rear trim with your fingers and place in ZONE I.
- Picture 3: Remove four pink 3.5 mm T5 Torx screws. Place in SLOT 1.

Step 8



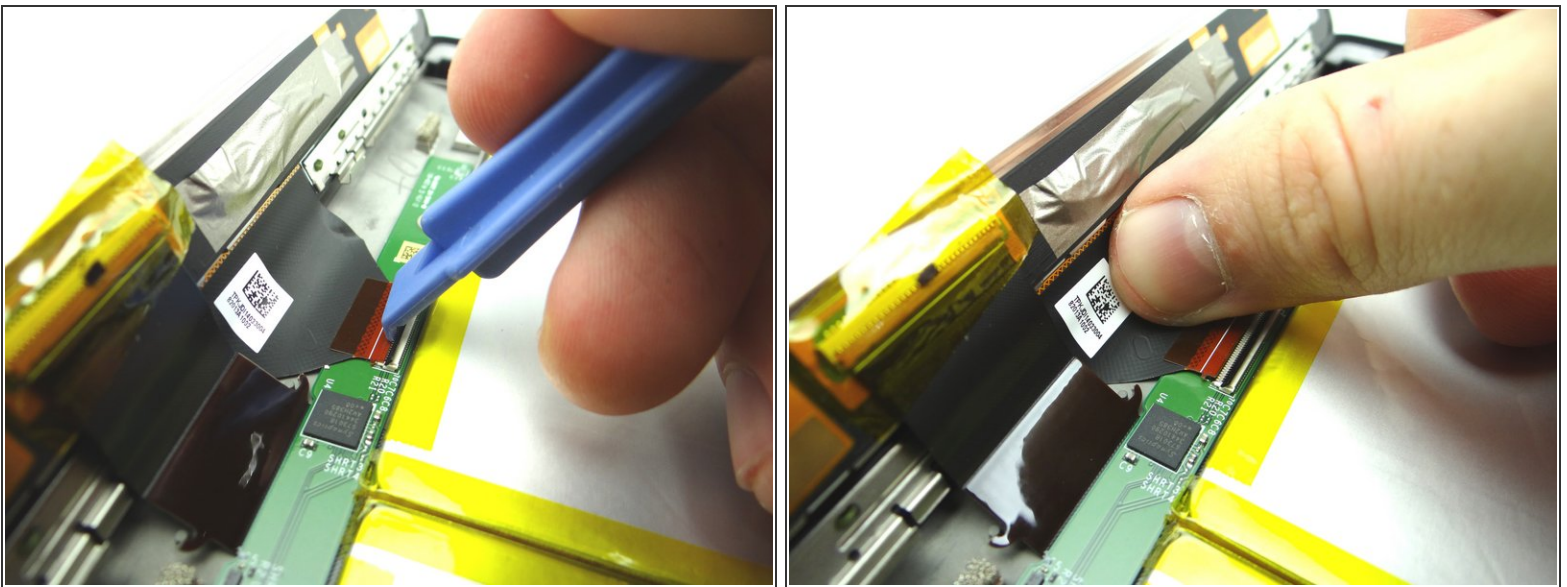
- Pictures 1 & 2: Using your thumbs, apply pressure to the rear case in the corner near the power button to begin separating the display assembly from the rear case.
- Picture 3: Insert a blue pry tool along the top edge between the display assembly and rear case.

Step 9



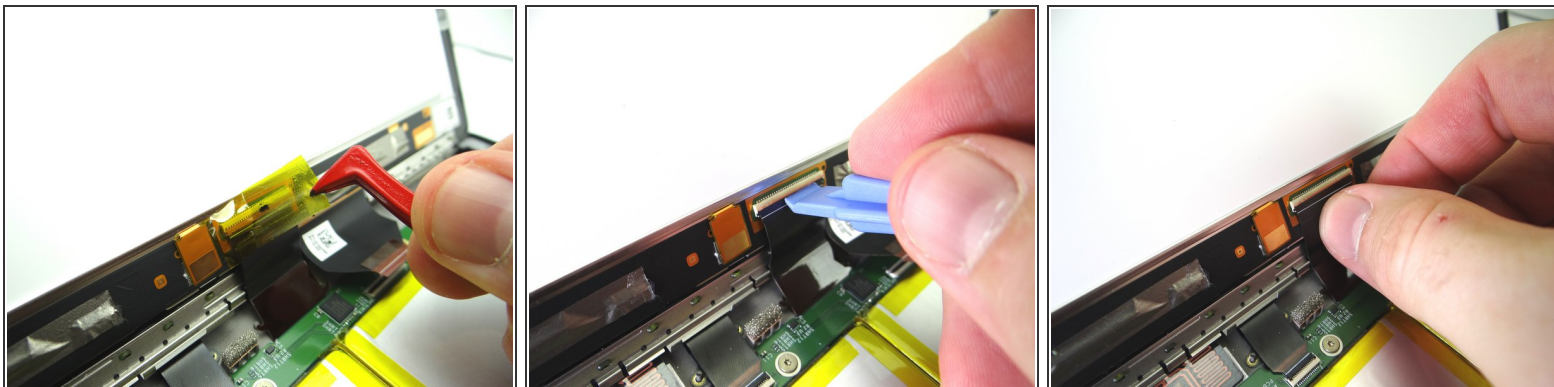
- Picture 1: Hold the corner open with your finger while using the blue pry tool to release the clips along the top of the display assembly.
- Picture 2: Open the screen like a book until all clips are released.
- Picture 3: Lay the rear case on the table with the display assembly open at a 90° angle, as shown.
- In the next couple step you'll release the display cables (red square):

Step 10



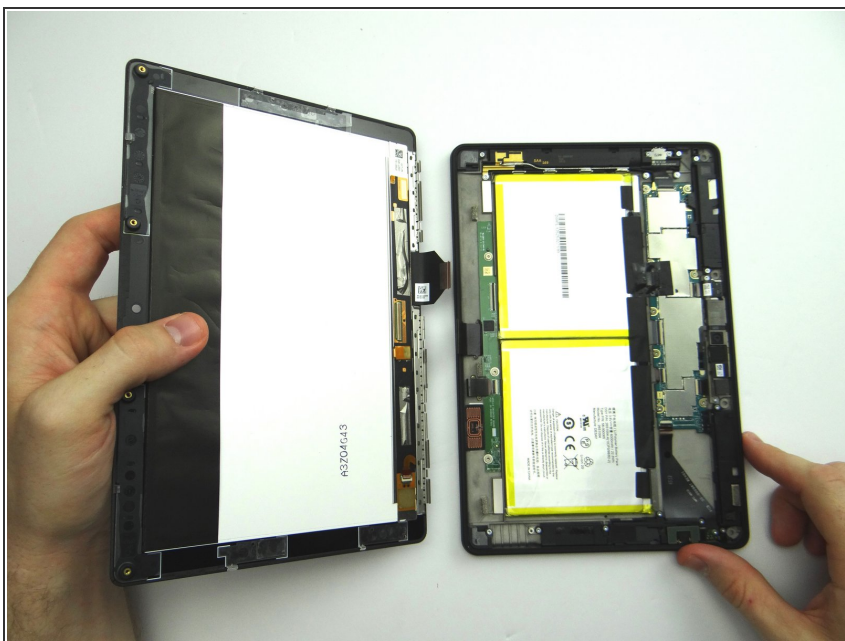
- Use the wide blue pry tool to move the ZIF connector black bar into open position as shown.
- Gently guide the display cable out of the ZIF connector.

Step 11



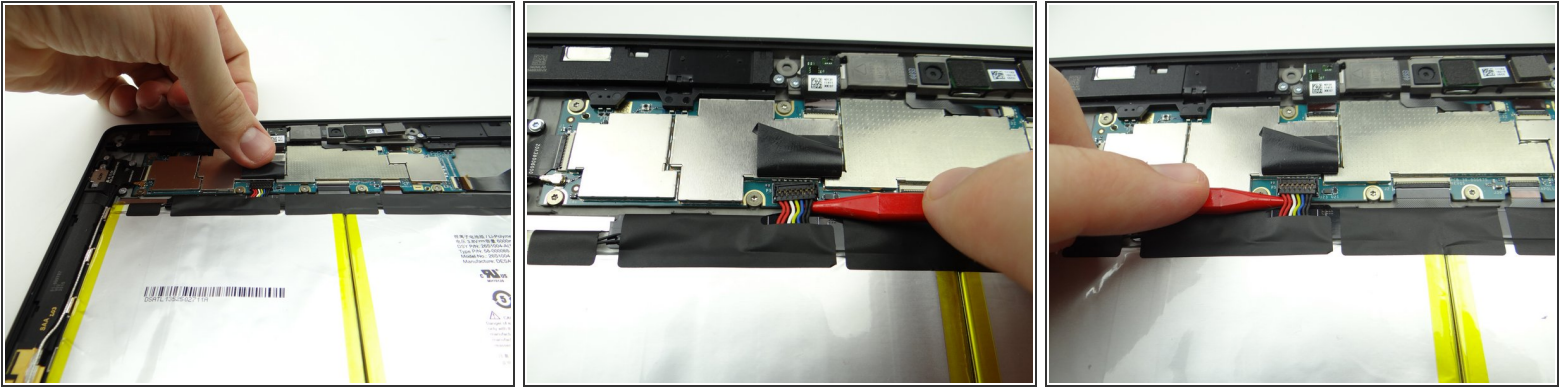
- Picture 1: Peel up yellow Kapton tape with plastic tweezers. Adhere the tape to the wall of COMPARTMENT A.
- ⓘ You'll need a piece of Kapton tape for reassembly to help hold this display cable in place.
- Picture 2: Use the wide blue pry tool to open the brown bar of the ZIF connector.
- Picture 3: Gently guide the cable out of the ZIF connector.

Step 12




- Separate the Display Assembly from the Rear Case. Place them in the sandbox.

Step 13 — Removal 2 - Disconnect Battery (before going on)



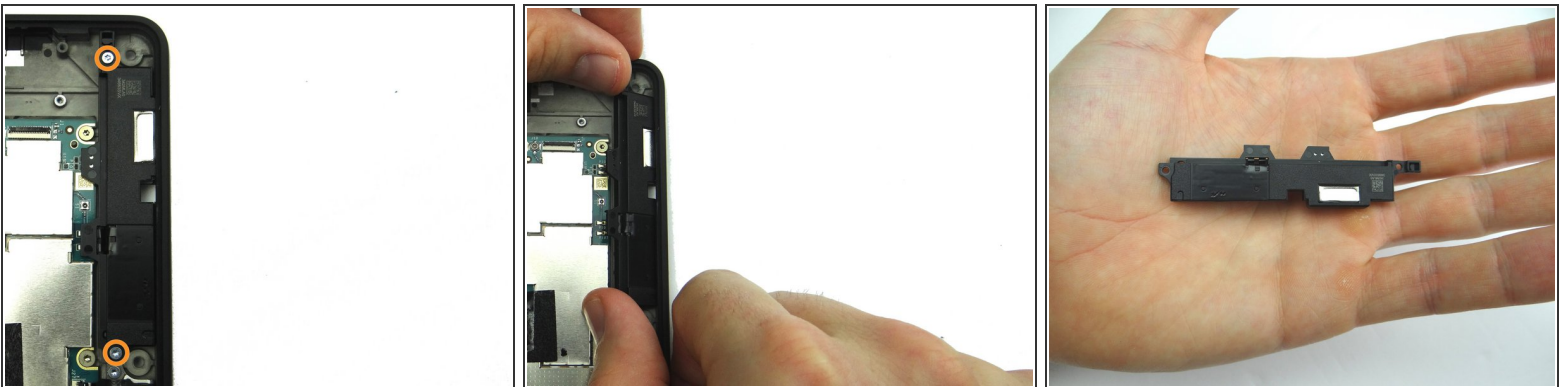
- Picture 1: Peel tape back to expose battery connector.

 Leave tape connected to the logic board as shown.

 **Work slowly and carefully as you pry up the battery connector:**

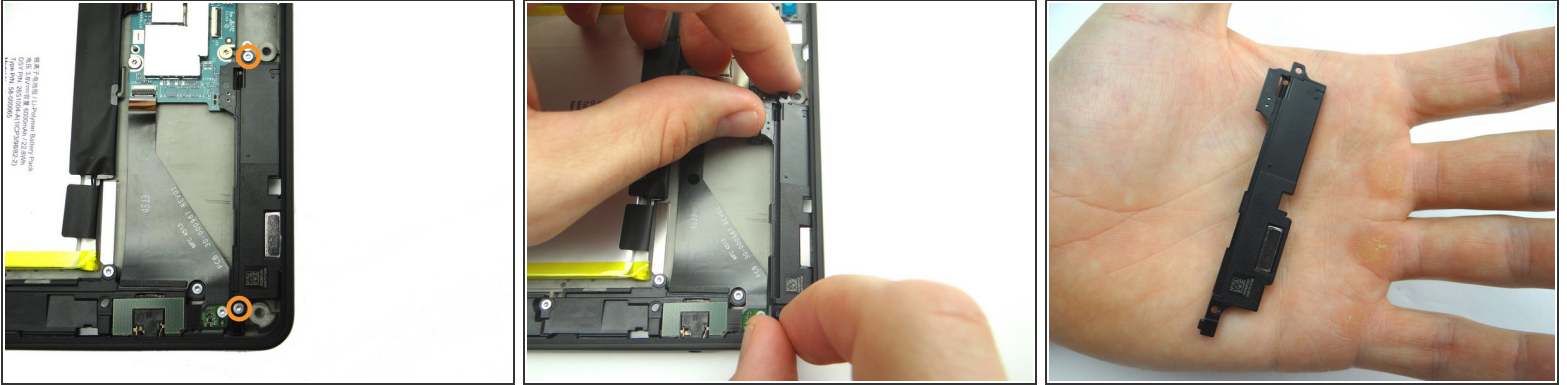
- Picture 2: Use the pointed end of the spudger to pry up right side of battery connector slightly.
- Picture 3: Lift the battery connector straight up from the left side.

Step 14 — Removal 3.3 - Speakers



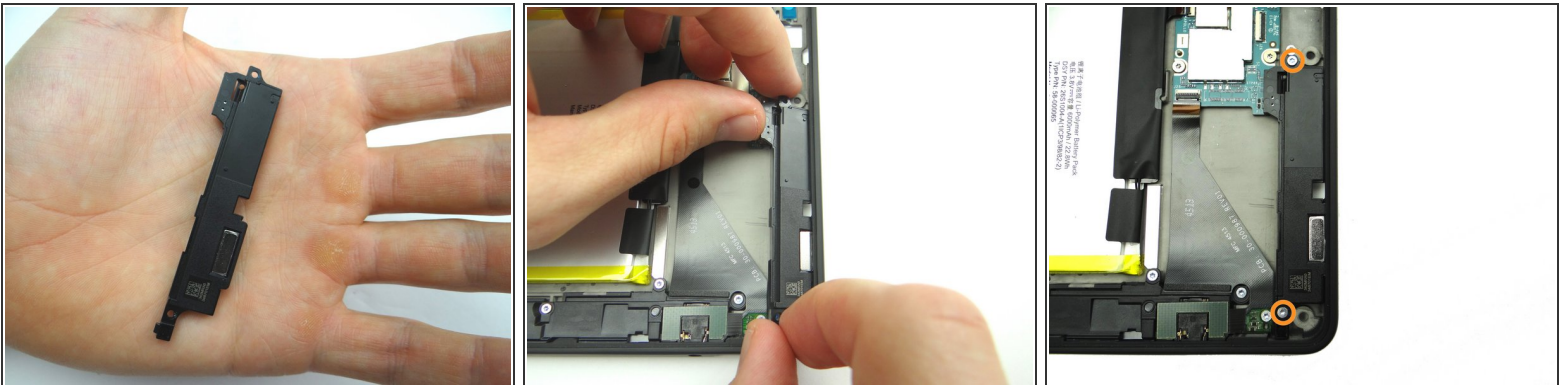
- Remove speaker seated above power button:
- Remove two 2.7mm T5 Torx screws and place into SLOT 2.
- Remove speaker and place in sandbox.

Step 15



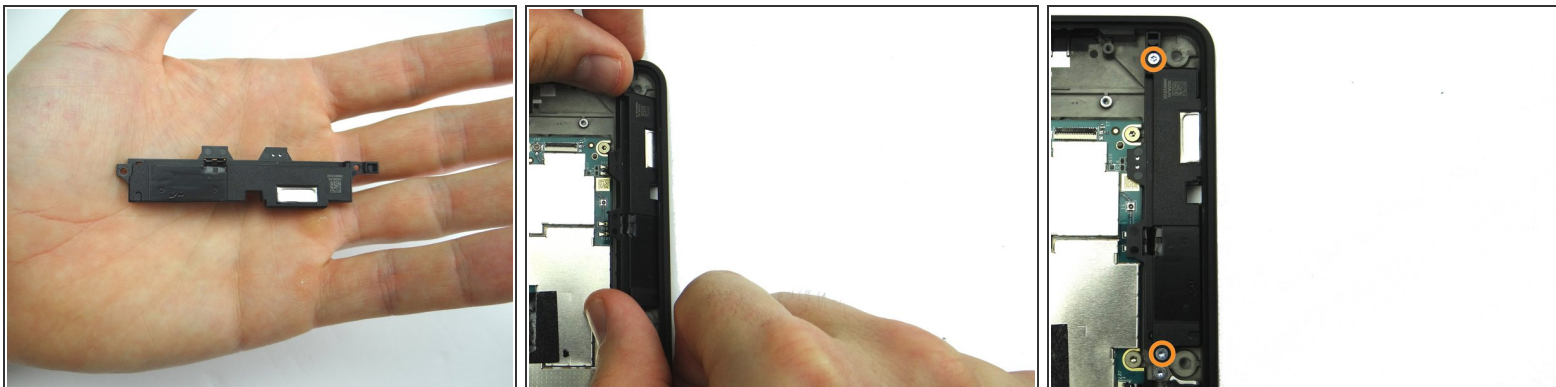
- Remove speaker seated above volume rocker:
- Remove two 2.7 mm T5 Torx screws. Place in SLOT 2.
- Remove speaker and place in sandbox.

Step 16 — Replacement 3.3 - Speakers



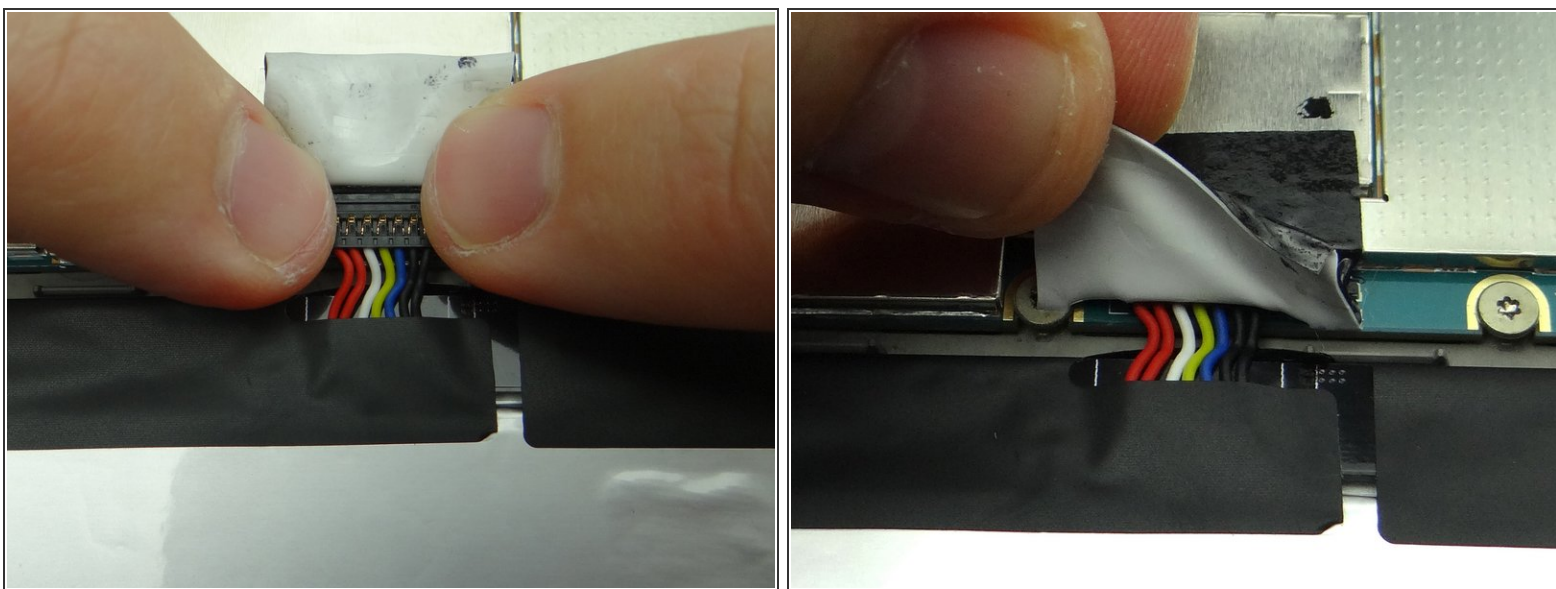
- Seat speaker above volume rocker.
- Replace two 2.7mm T5 Torx screws from SLOT 2.

Step 17



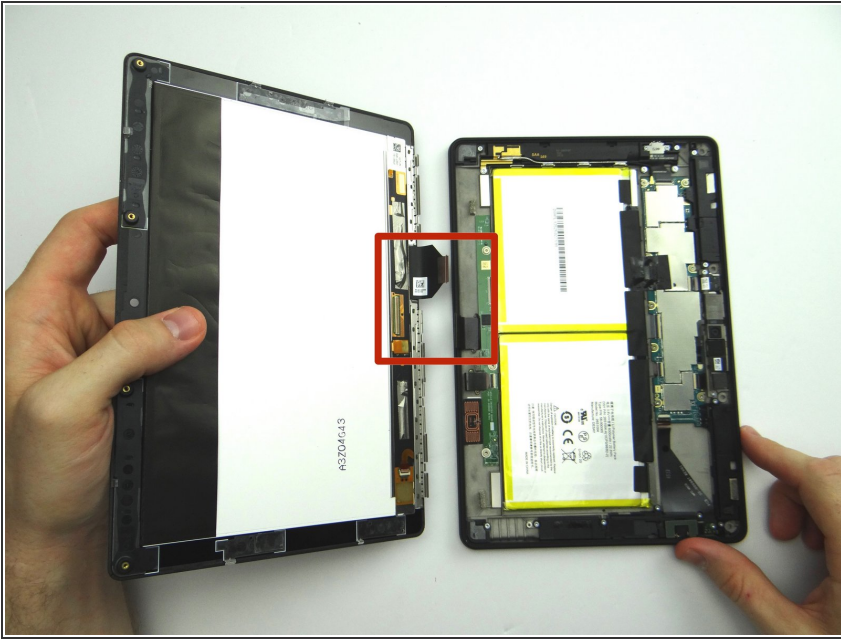
- Seat speaker above power button.
- Picture 3: Replace two 2.7mm T5 Torx screws from SLOT 2.

Step 18 — Replacement 2 - Connect Battery



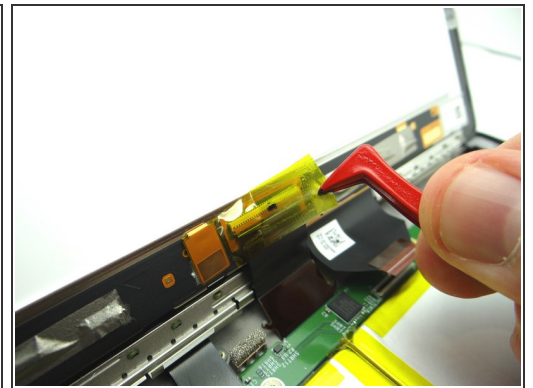
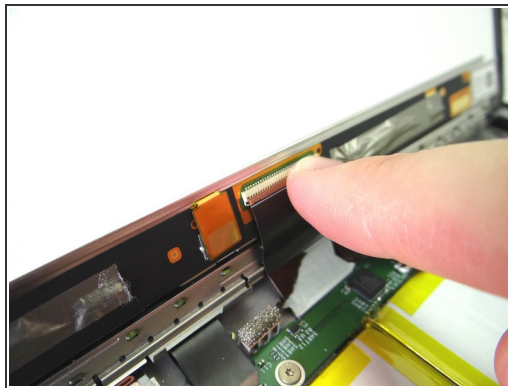
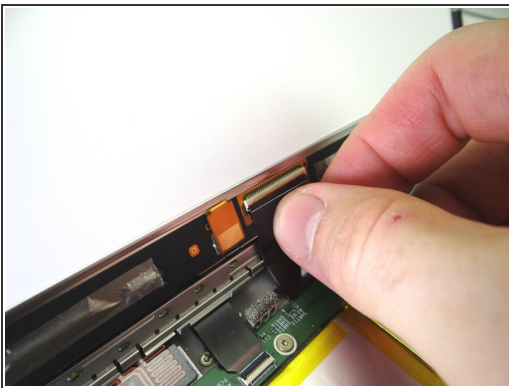
- Push battery connector straight down into its socket on the logic board.
- Fold down tape to cover the battery connector.

Step 19 — Replacement 1 - Display Assembly



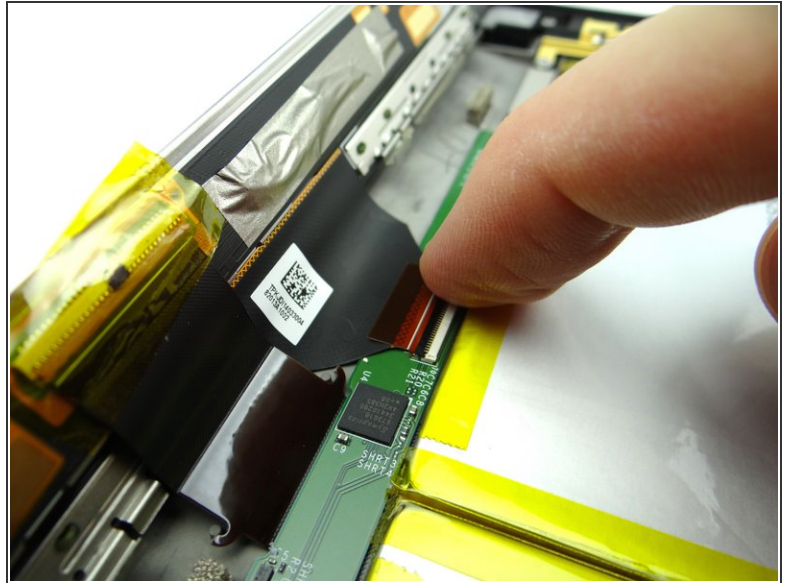
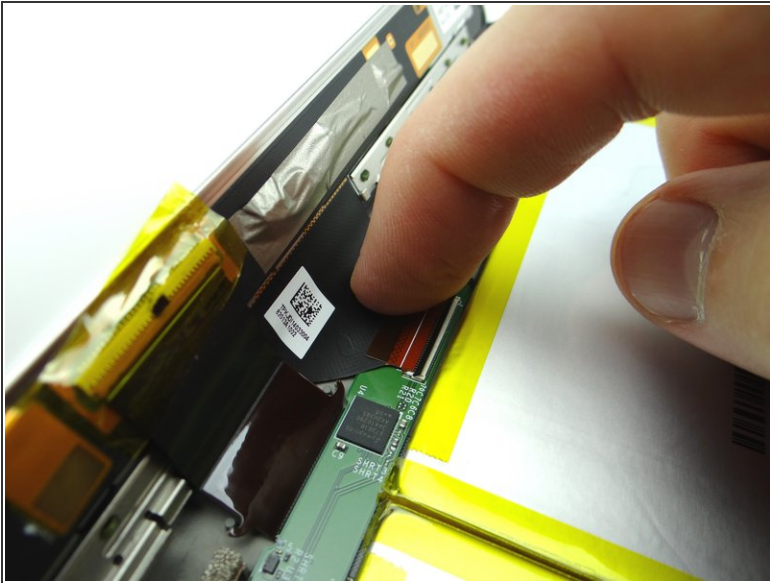
- Bring the display assembly to the rear case to attach the two display cables.

Step 20



- Picture 1: Insert the rectangular display cable into the ZIF connector.
- Picture 2: Close the ZIF connector with your finger.
- Picture 3: Cover ZIF connector with Kapton tape from COMPARTMENT A.

Step 21



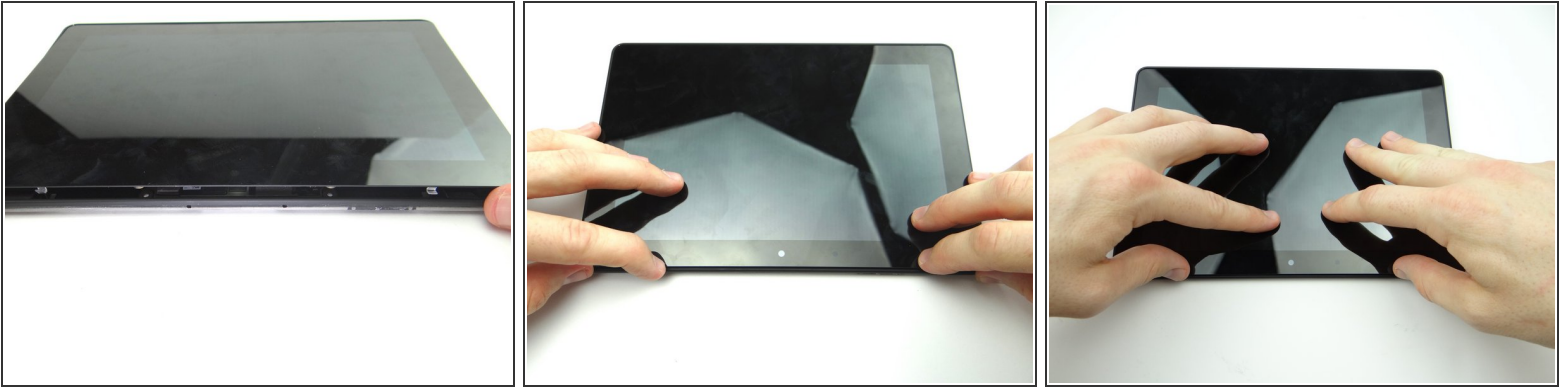
- Guide the triangular display cable into the ZIF connector using your finger.
- Close the ZIF connector.

Step 22



- Align the clips (red squares) along the bottom of the display assembly with their slots on the rear case.

Step 23



- Pictures 1 & 2: Press the top of the display assembly firmly into the rear case to secure the clips along the top edge.
- Picture 3: Press firmly on the display assembly to ensure all clips are seated correctly.

Step 24



- Picture 1: Replace four pink 3.5 mm T5 Torx screws from SLOT 1.
- Picture 2: Replace the rear trim piece from ZONE I.
- Picture 3: Apply low level heat (100° Celcius) to help the adhesive re-adhere.

Step 25



- Power up and test the device.