

# CELLPHONESANDBOX

## Manual 08 - Front Panel Assembly

Written By: James Linder





## TOOLS:

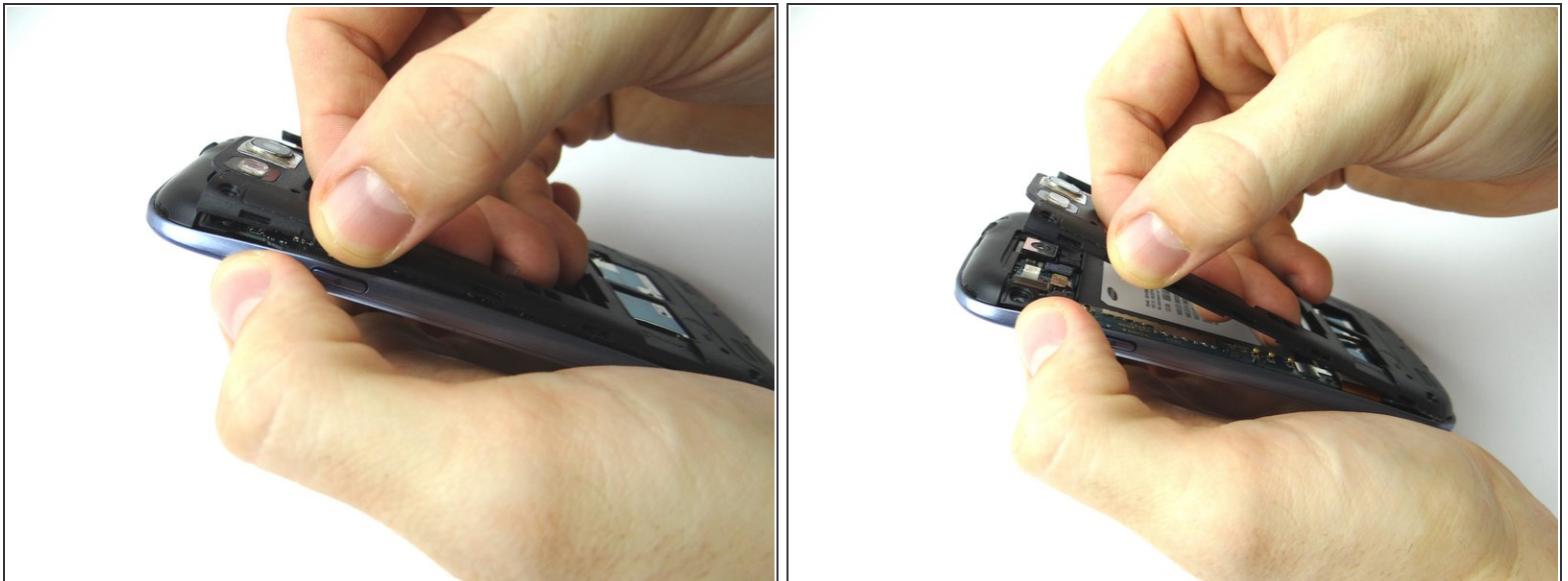
- [Technician Starter Package](#) (1)
-

## Step 1 — Removal 1 - Mid-frame



- Before disassembling the Samsung Galaxy S3, thoroughly wash and dry your hands.
- Picture 1: Remove battery cover and battery. Place into ZONE I.
- Picture 2: Remove SIM card, and SD card. Place in COMPARTMENT A.
- Picture 3: Remove ten 4.0 mm Phillips screws. Place in SLOT 1.

## Step 2



- Use your fingers to pull the mid-frame away from the phone. Place into ZONE II.

### Step 3 — Removal 2 - Headphone Jack/Speaker Assembly



- Picture 1: Use the Black Spudger to release the headphone jack/speaker assembly cable.
- Picture 2: Place the flat tip of the Black Spudger in the bottom right corner of the headphone jack/speaker assembly and gently pry up to release it from the phone.
- Picture 3: Place headphone jack/speaker assembly into ZONE III.

### Step 4 — Removal 3 - Logic Board



- Picture 1: Use the Blue Pry Tool to release the front-facing camera cable.
- Picture 2: Use the Blue Pry Tool to release the earpiece speaker/volume button cable connector.
- Picture 3: Use the Blue Pry Tool to release the display assembly cable connector.

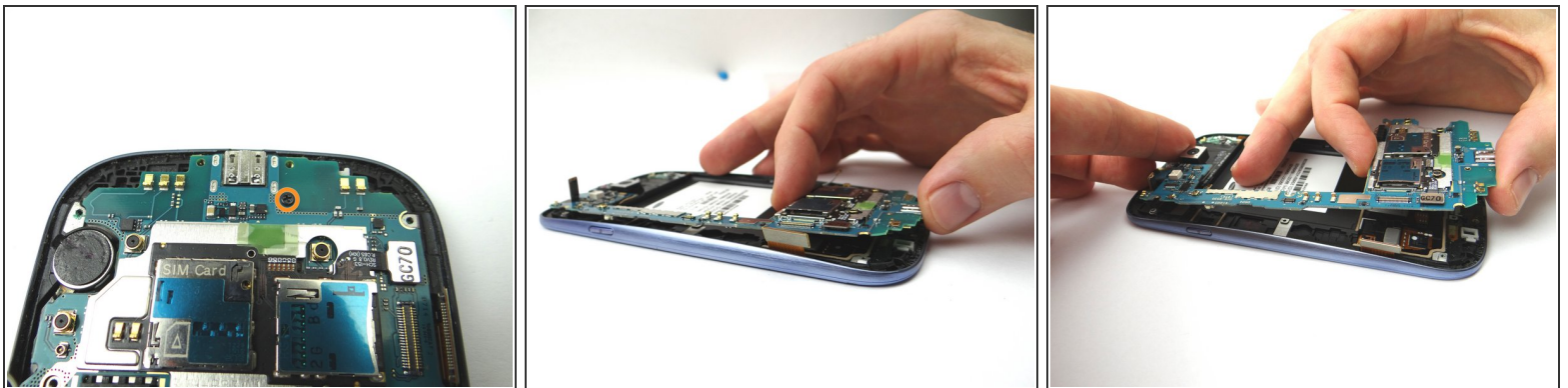


## Step 5



- Picture 1: Use the Blue Pry Tool and disconnect the wifi antenna connector.
- Picture 2: Move the cable to the side with your finger.

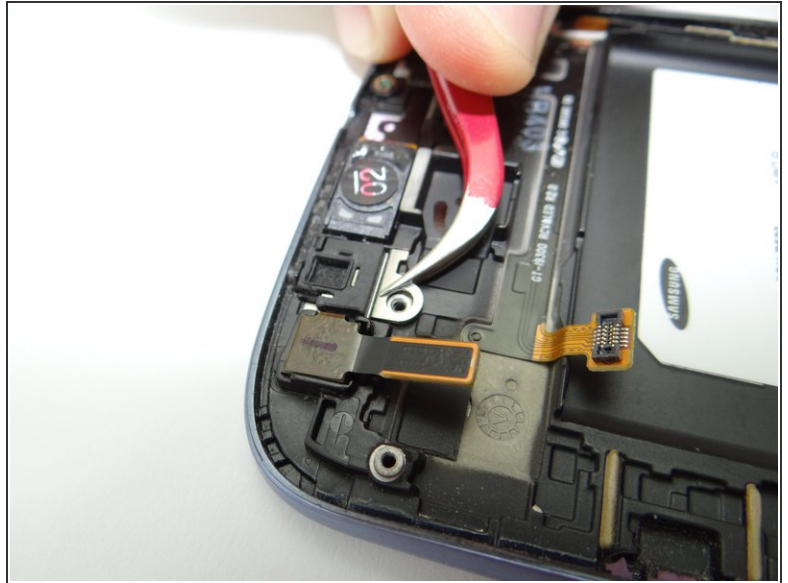
## Step 6



- Picture 1: Remove one 3.0 mm and place into SLOT 2.
- Picture 2 & 3: Lift logic board out of the phone and place into ZONE IV.

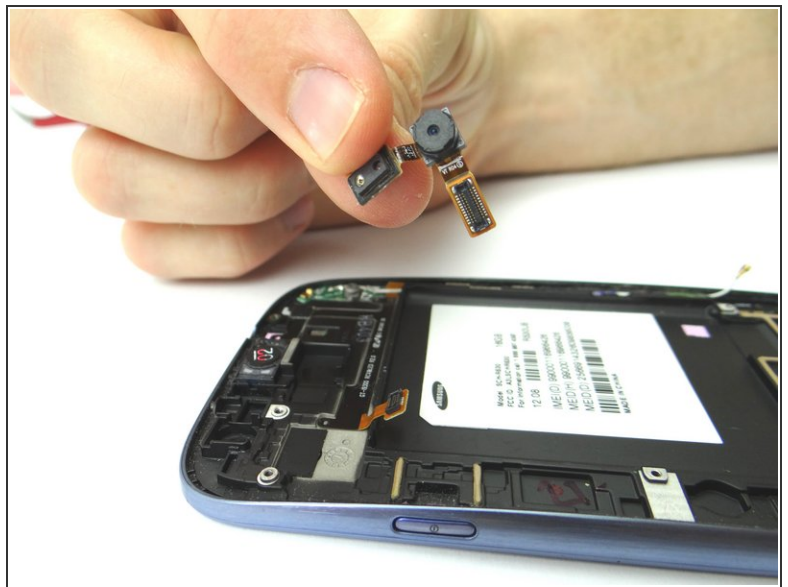
**⚠ Brush away cable connectors from the logic board, as you remove it, to avoid ripping them.**

## Step 7 — Removal 4 - Front-Facing Camera



- Picture 1: Remove one 2.0 mm Phillips screw and place into SLOT 3.
- Picture 2: Remove the top microphone casing bracket and place into SLOT 3.

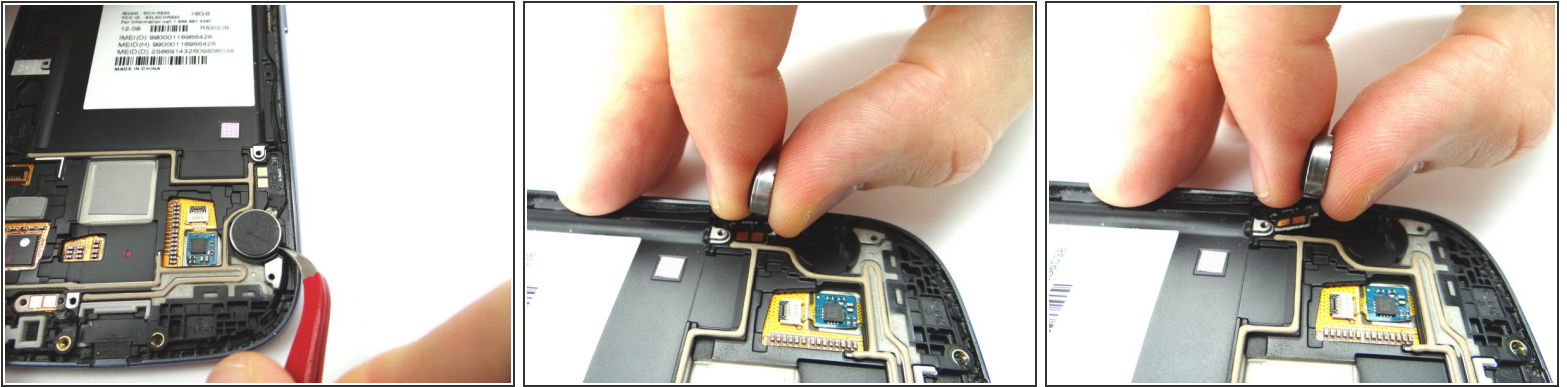
## Step 8



- Use your fingers to grasp the front-facing camera and lift from left to right to peel up the ribbon cable that is attached. Place it in COMPARTMENT B.

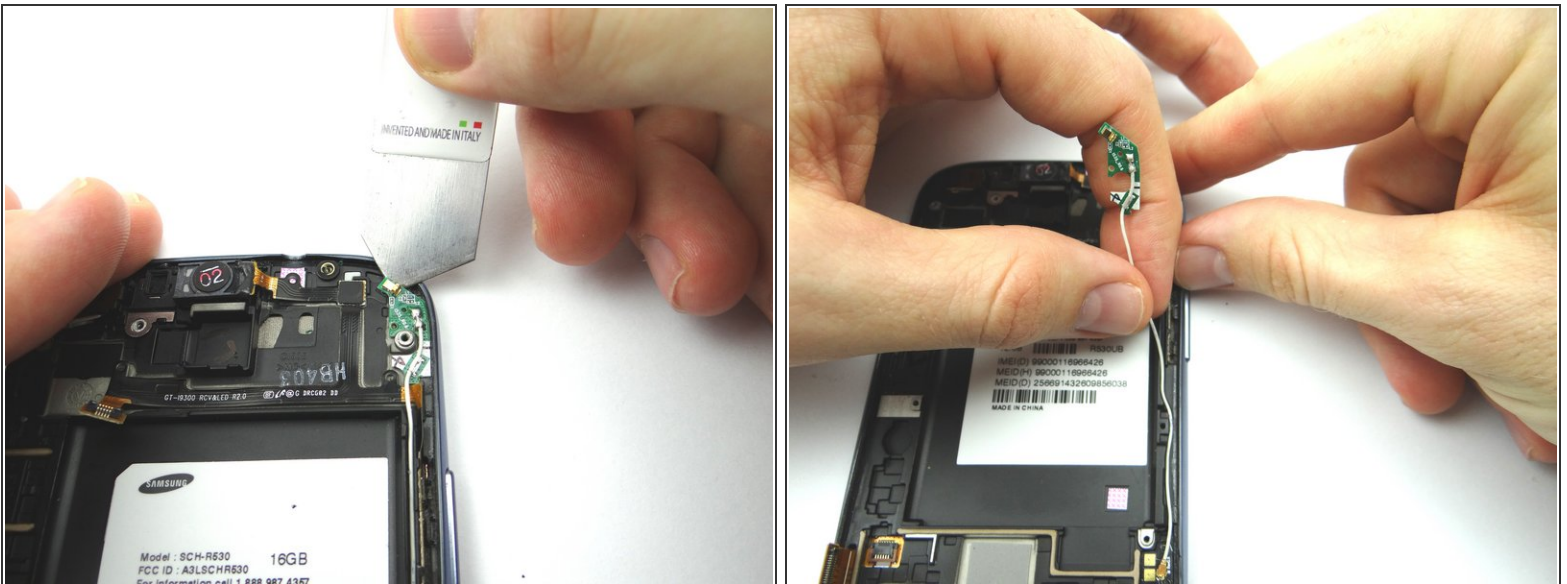


## Step 9 — Removal 4.1 - Vibrator



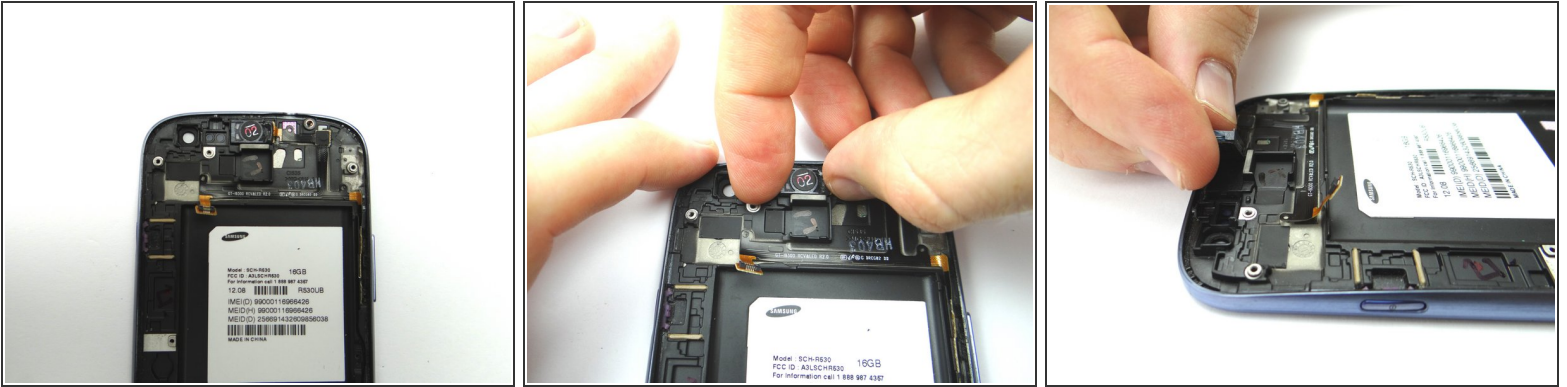
- Picture 1: Wedge the Curved Tip Tweezers in the closed position under the vibrator. Pry up to free the vibrator from the adhesive holding it to the front panel assembly.
- Picture 2 & 3: Once the vibrator is up, grab it with your index finger and thumb, and gently pull the ribbon cable contacts from the phone. Place in COMPARTMENT C.

## Step 10 — Removal 4.2 - Wifi Antenna



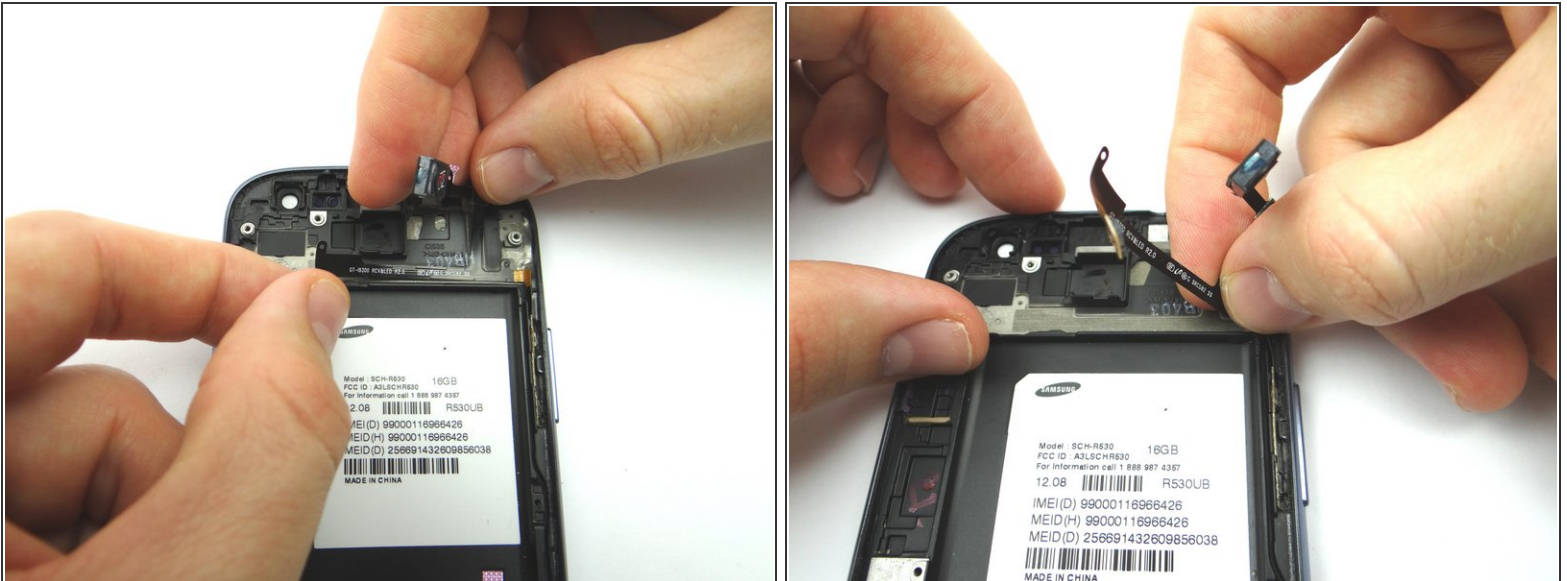
- Picture 1: Use the iSesamo to separate the adhesive securing the wifi antenna board from the phone. Do not lift up on the board until it is free of the phone.
- Picture 2: De-route the wifi antenna cable.
- Place the wifi antenna into COMPARTMENT D.

## Step 11 — Removal 4.3 - Earpiece Speaker / Volume Button Assembly



- Remove the earpiece speaker/volume button assembly:
- Pick up the earpiece speaker with your thumb and index finger and gently pull the ribbon cable up from left to right.

## Step 12



- Grab the ribbon cable near the connector on the left side and gently lift it from the phone, going left to right.

**⚠ Stop when you reach the volume button contacts.**

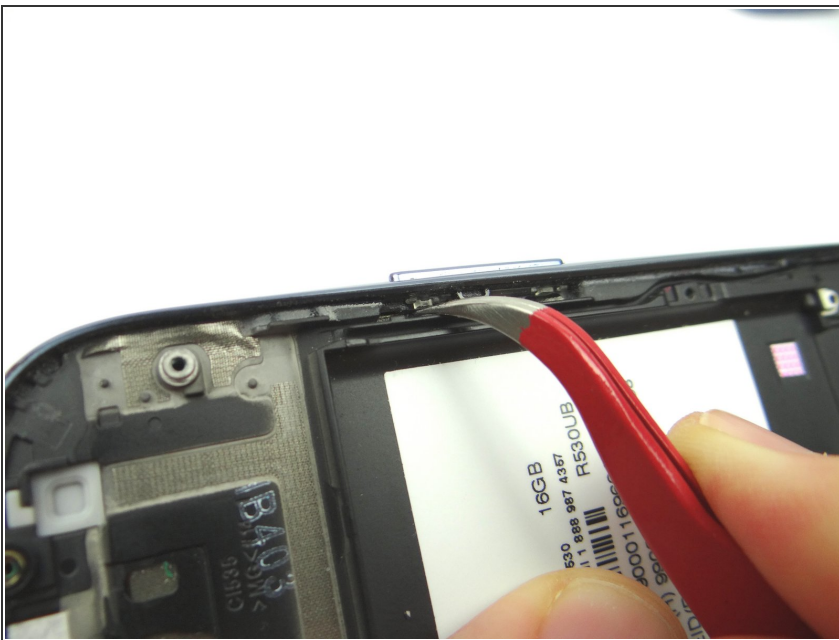


## Step 13



- Insert the iSesamo between the volume button contacts and the plastic tab they are adhered to. Work the tool from top to bottom to release the adhesive.
- Use Curved Tip Tweezers to remove the volume button contacts.
- Place earpiece speaker/volume button assembly into COMPARTMENT E.

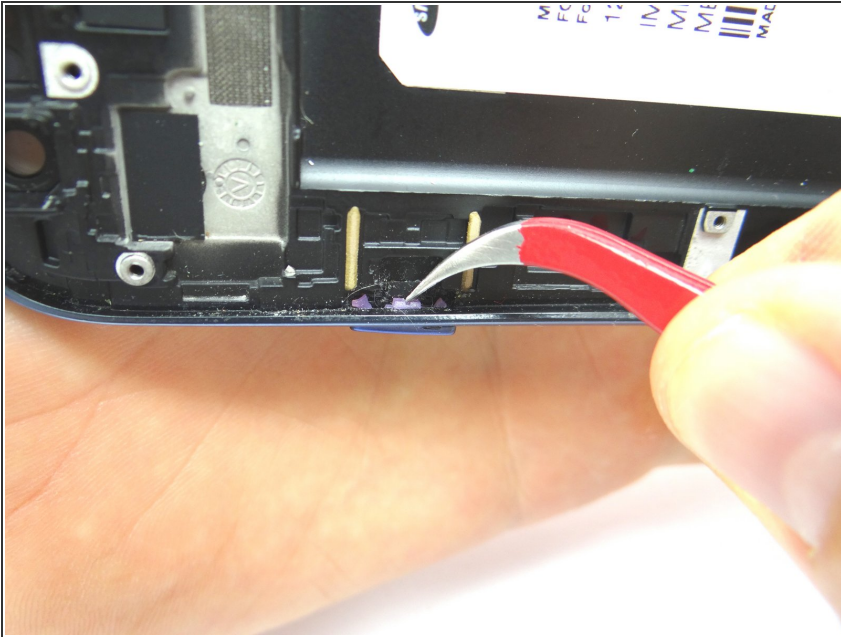
## Step 14



- Use the Curved Tip Tweezers to remove the volume button by pushing it out of the frame. Place

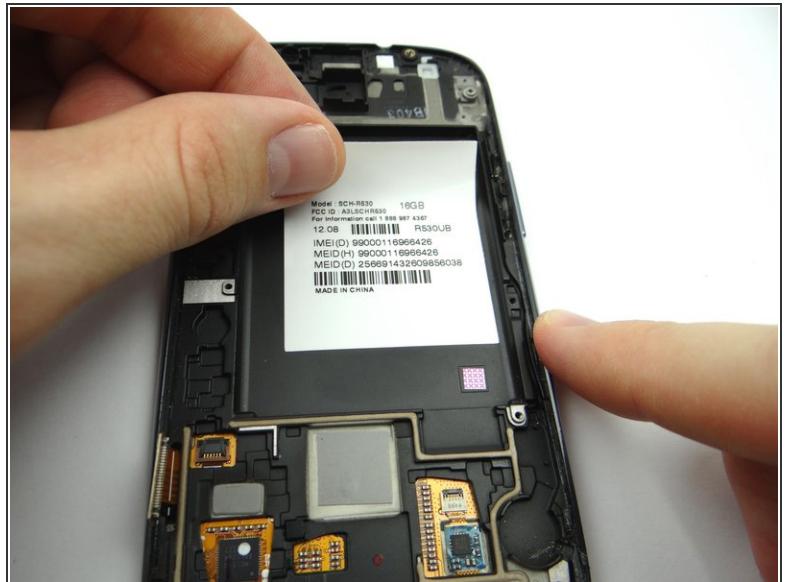
volume button into  
COMPARTMENT F.

## Step 15 — Removal 5 - Front Panel Assembly



- Use the Curved Tip Tweezers to remove the power button by pushing it out of the frame. Place power button into COMPARTMENT G.

## Step 16



- Apply heat to the IMEI sticker for approximately 20 seconds to loosen the adhesive.
- Remove IMEI sticker and move to replacement part.

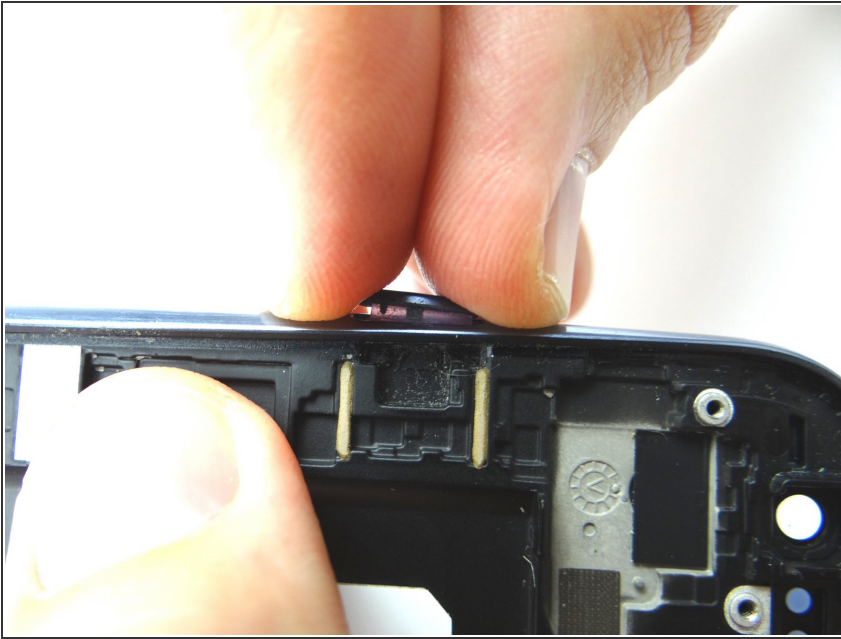
## Step 17 — Replacement 5 - Front Panel Assembly



- Place the IMEI sticker on the new display assembly and smooth out with your fingers.

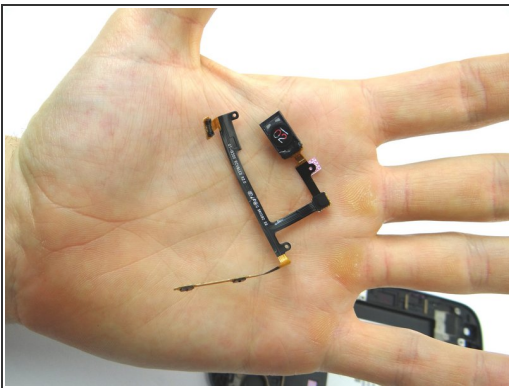


## Step 18



- Reattach the power button from COMPARTMENT G by pushing it in with your fingers. Note the overbite at the bottom of the power button - this is the correct orientation.

## Step 19 — Replacement 4.3 - Earpiece Speaker / Volume Button Assembly



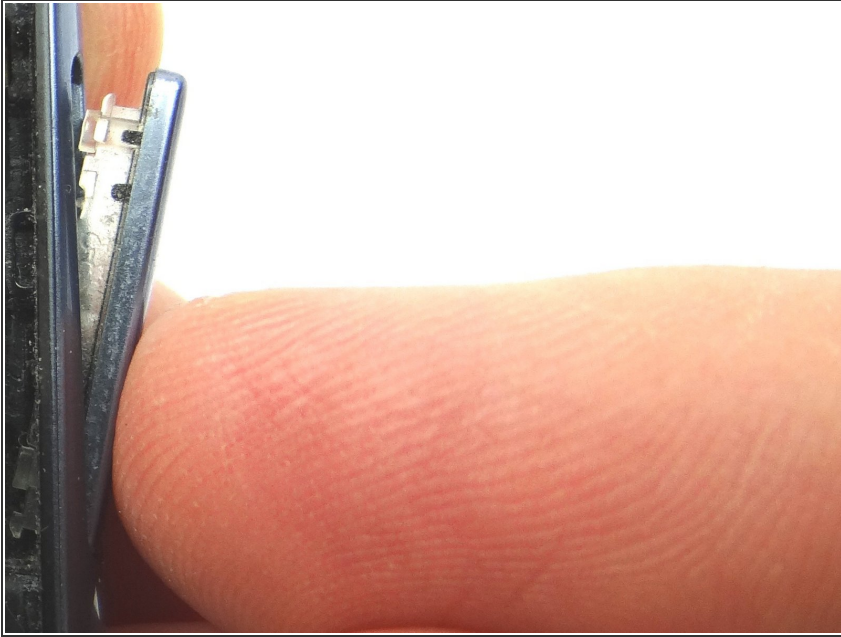
- Picture 1: Pick up earpiece speaker/volume assembly from COMPARTMENT E.
- Use Curved Tip Tweezers to reattach the volume button contacts to the plastic tab.
- Working from right to left, secure the ribbon cable to the phone.

## Step 20



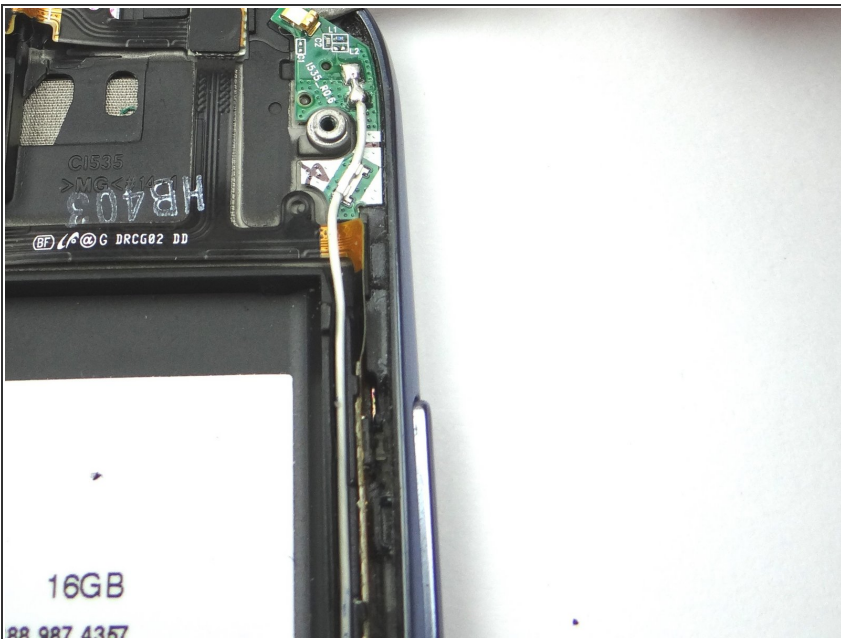
- Use your fingers to position the earpiece speaker into its spot.

## Step 21



- Reattach the volume button from COMPARTMENT F by pushing it in with your fingers. Note the overbite at the top of the volume button - this is the correct orientation.

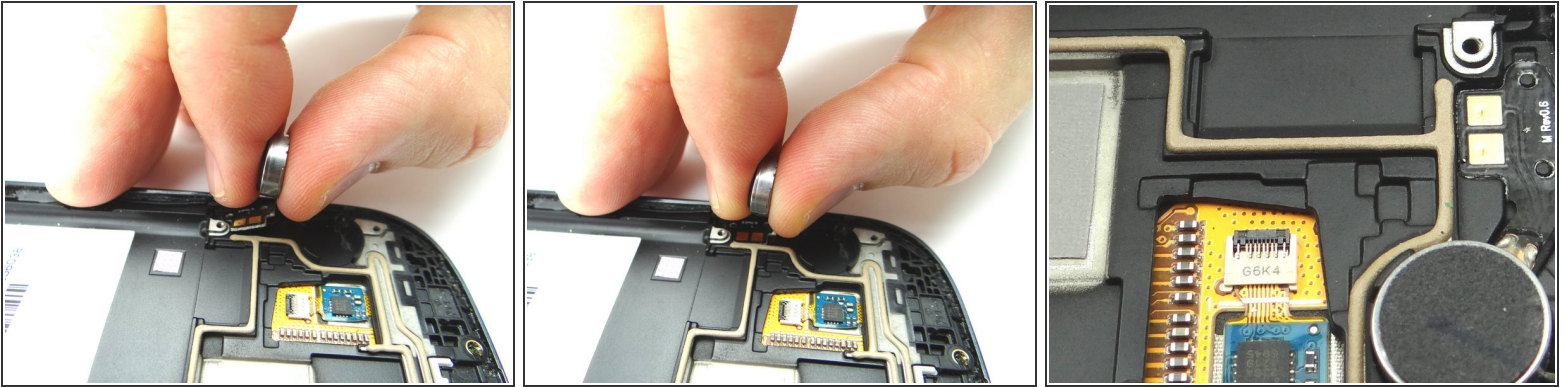
## Step 22 — Replacement 4.2 - Wifi Antenna



- Replace wifi antenna from COMPARTMENT D and route the cable along the right side of the phone.

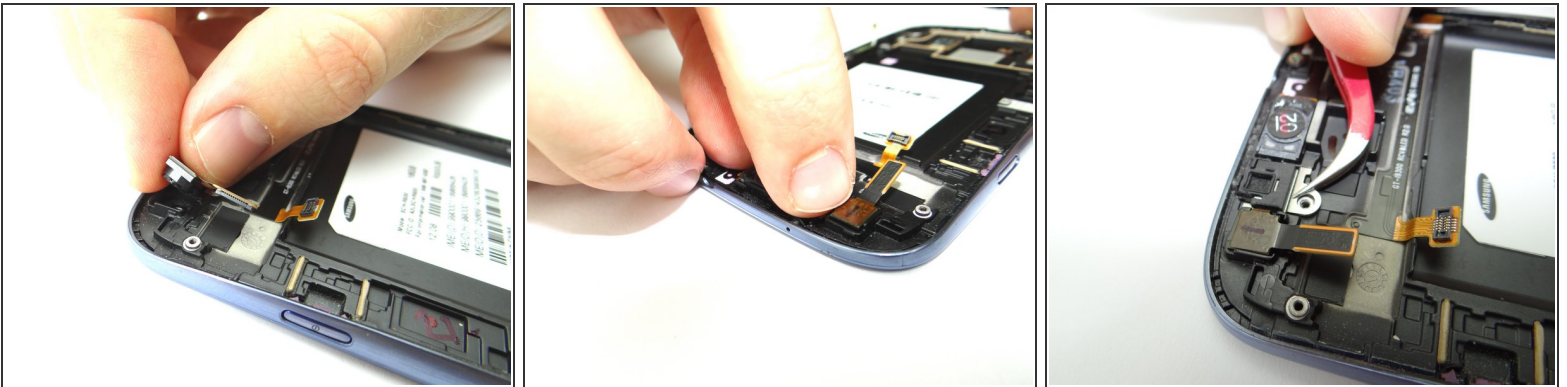


## Step 23 — Replacement 4.1 - Vibrator



- Replace vibrator from COMPARTMENT C.

## Step 24 — Replacement 4 - Front-Facing Camera



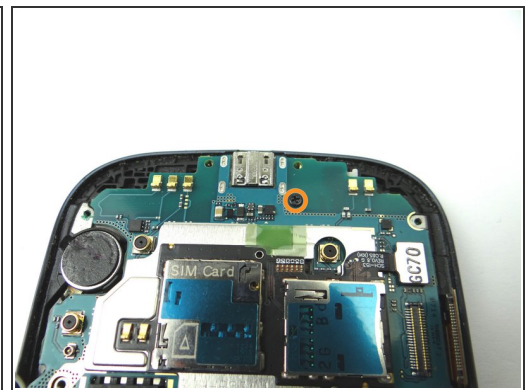
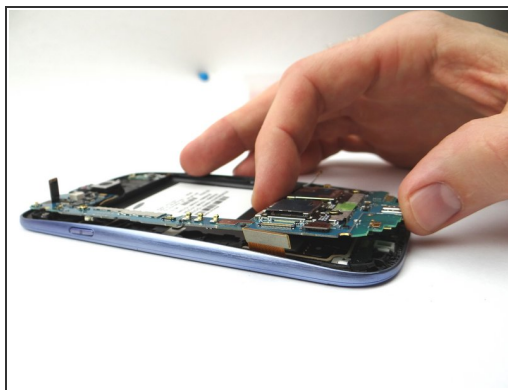
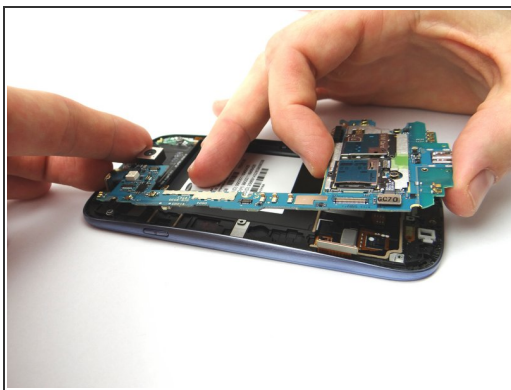
- Picture 1 & 2: Replace the front-facing camera from COMPARTMENT B.
- Picture 3: Replace the top microphone casing bracket from SLOT 3.

## Step 25



- Replace one 2.0 mm Phillips screw from SLOT 3.

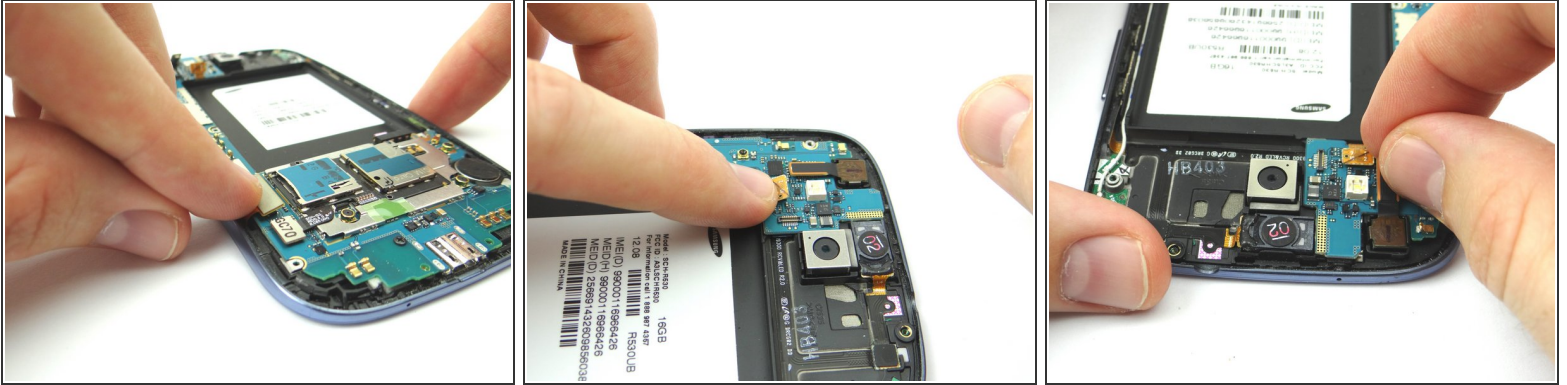
## Step 26 — Replacement 3 - Logic Board



- Picture 1 & 2: Place the logic board onto the phone from ZONE IV.
- Picture 3: Replace one 3.0 mm screw from SLOT 2.

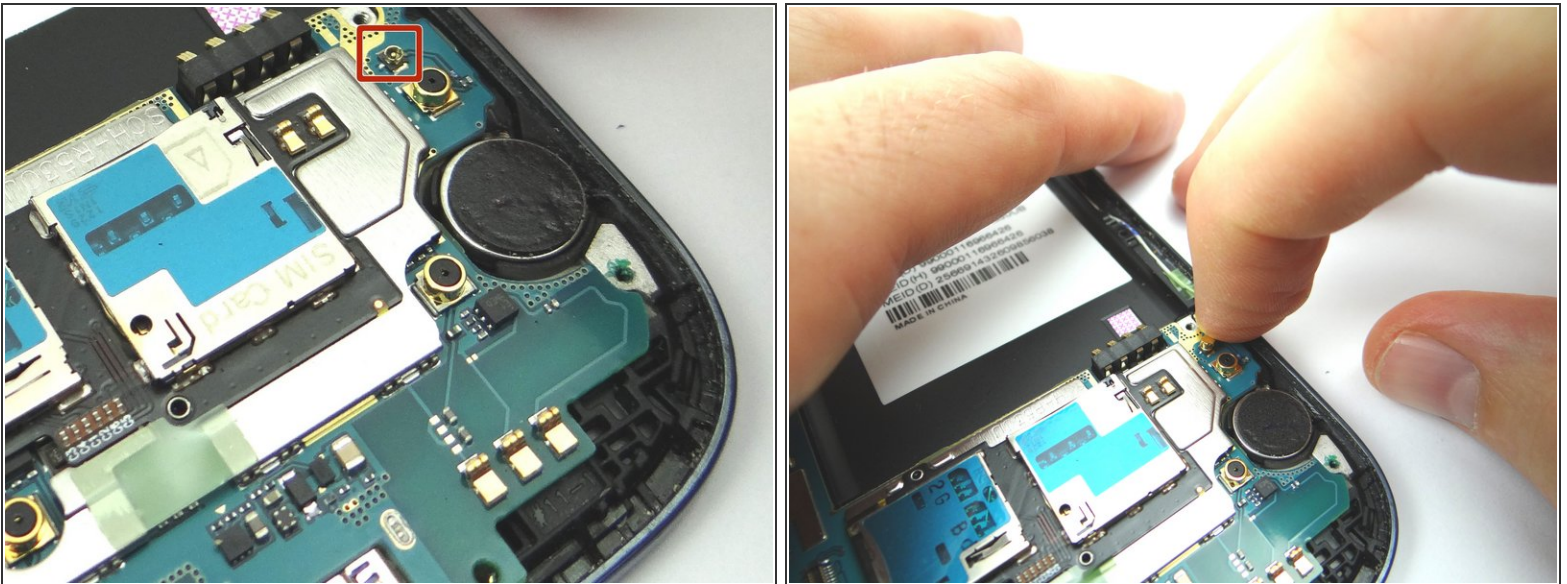


## Step 27



- Picture 1: Reattach display assembly cable connector.
- Picture 2: Reattach earpiece speaker/volume button cable connector.
- Picture 3: Reattach front-facing camera cable connector.

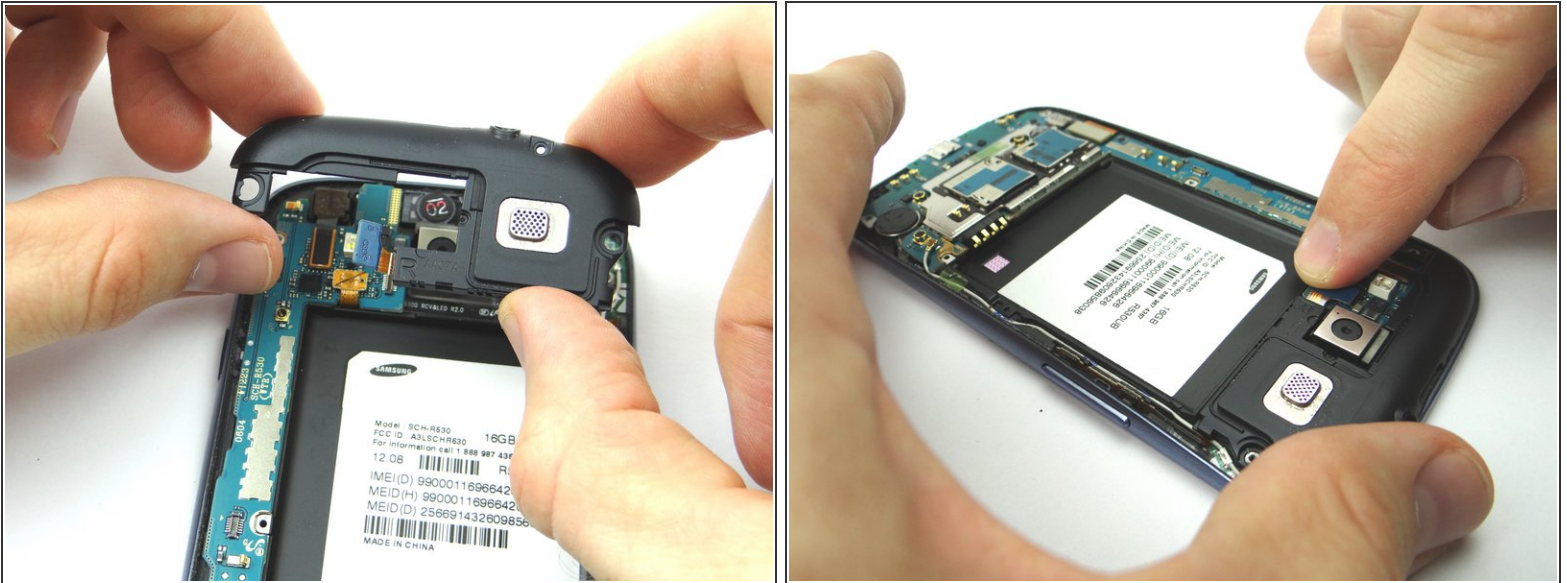
## Step 28



- Use your index finger to reattach the wifi antenna cable.



## Step 29 — Replacement 2 - Headphone Jack/Speaker



- Picture 1: Replace headphone jack/speaker assembly from ZONE III.
- Picture 2: Use your finger to reattach the headphone jack/speaker assembly cable.

## Step 30 — Replacement 1 - Mid-frame



- Picture 1 & 2: Replace the mid-frame on the phone from ZONE II.
- Picture 2: Replace ten 4.0 mm Phillips screws from SLOT 1.

## Step 31



- Replace SIM card and SD card from COMPARTMENT A.
- Replace battery cover and battery from ZONE I.