

CELLPHONESANDBOX

Manual 03 - Display Assembly / Home Button

Written By: Josh Patterson

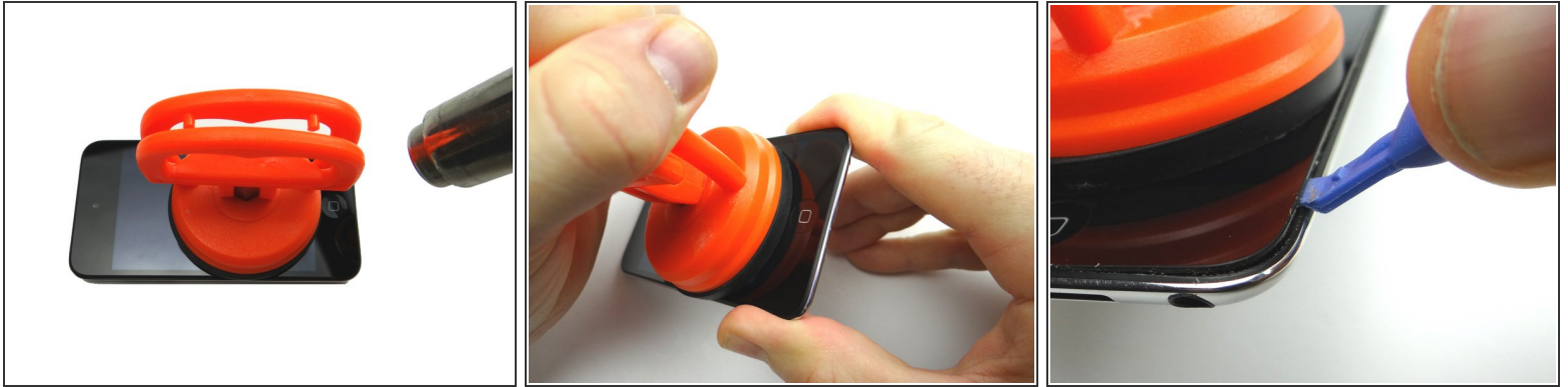




TOOLS:

- [Technician Starter Package](#) (1)
-

Step 1 — Removal 1 - Metal Plate



i We provide two methods for removing the screen: one using a suction cup and another using the iSesamo opening tool. The suction cup method is preferred, but the iSesamo may be necessary if the screen is badly cracked.

- Picture 1: Place the suction cup on the screen just above the home button. Apply low-level heat (100° Celsius) around the perimeter of the iPod for 60 seconds. Heat the bottom edge for an additional 60 seconds.

⚠ The iPod may be hot to the touch.

- Pictures 2 & 3: Use the suction cup to pull the screen up just enough to wedge the blue pry tool between the screen and the rubber bezel encircling it.

i Leave suction cup attached.

Step 2



- Picture 1: Wedge a guitar pick in the lower-right corner. Using the blue pry tool, work your way across the bottom edge of the iPod gently prying up as you go.
 - Picture 2: Wedge a guitar pick in the lower-left corner. Work your way up the left side with the guitar pick.
 - Picture 3: Gently pull up on the suction cup while using the blue pry tool to lift the lower-left corner. Repeat on the lower-right corner. Create just enough space to grab the screen with your fingers.
- i** If you're unable to create suction, use the alternate method in the next two steps. Otherwise, skip the next two steps.

Step 3 — Alternate method if the screen is cracked:



- Picture 1: Apply low-level heat (100° Celsius) around the perimeter of the iPod for 60 seconds. Heat the bottom third of the iPod for an additional 60 seconds.

- Picture 2: Insert iSesamo along the right edge, 1 inch from the bottom, at a 90 degree angle.

⚠ Make sure you push between the screen and the black rubber bezel (NOT between the bezel and rear case).

- Picture 3: Pivot iSesamo to begin freeing the screen from the rear case. Work your way up the right edge with just the tip of the iSesamo as shown.

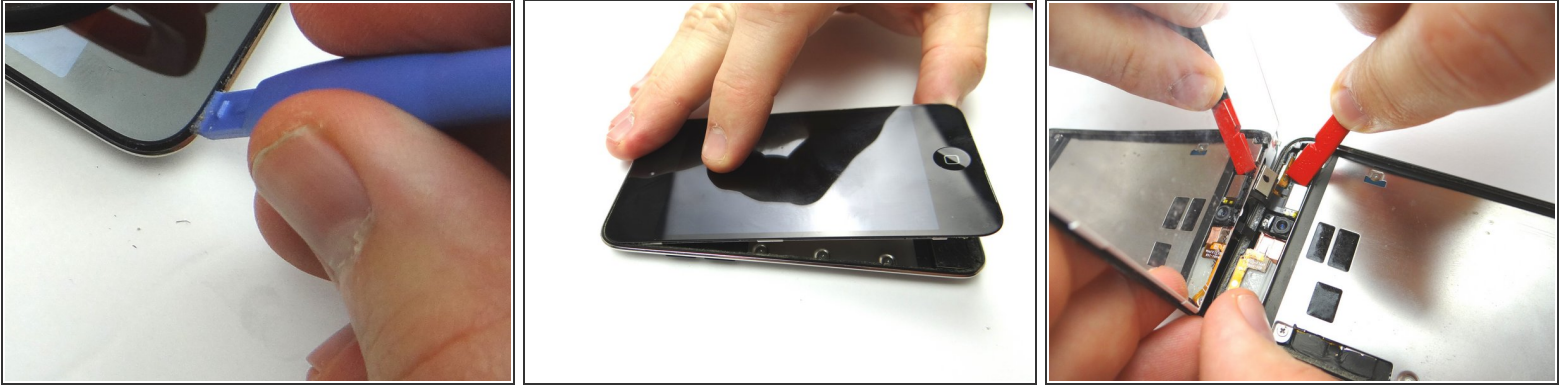
Step 4



- Picture 1: Continue working along the bottom edge with just the tip of the iSesamo as shown.
- Picture 2: Pivot the iSesamo around the bottom left corner then work your way up the left edge.

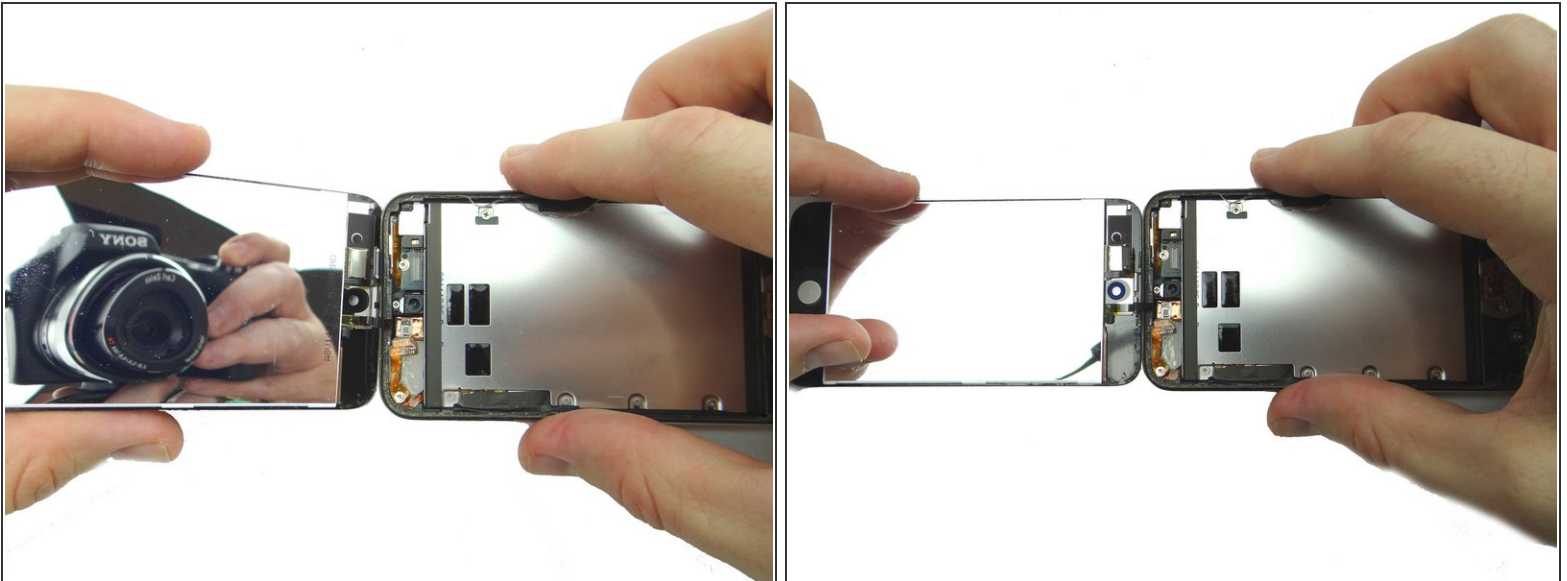
⚠ Picture 3: Avoid the digitizer and LCD ribbon cables as marked in the picture.

Step 5



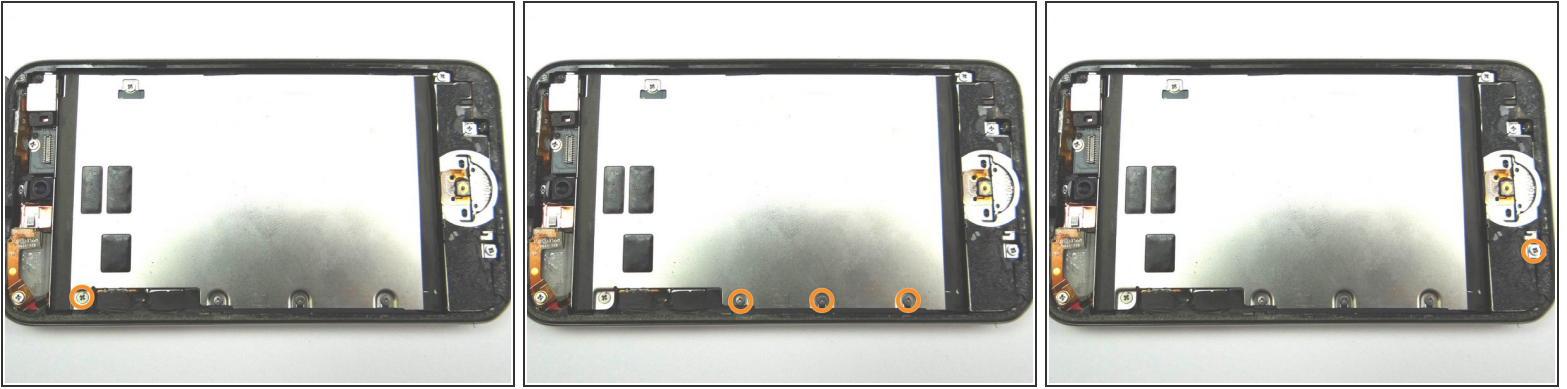
- Picture 1: Wedge the blue pry tool between the screen and the rubber bezel encircling it.
- Picture 2: Gently pry the bottom of the screen free from the rear case with your fingers.
- Picture 3: Open the display assembly to a 90 degree angle. Disconnect the LCD ribbon cable with the spudger.

Step 6



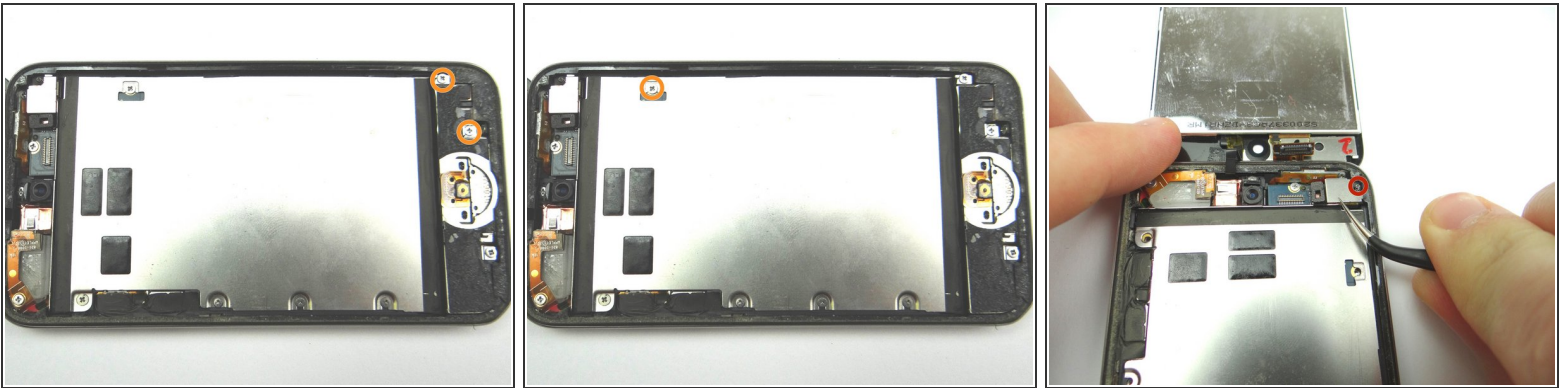
- Lay the display assembly flat on the worktable.
- ⓘ Don't separate the two halves as the digitizer cable is still attached to the logic board.

Step 7



- Picture 1: Remove one 2.4 mm Phillips screw and place into SLOT 1
- Picture 2: Remove three 2.0 mm Phillips screws and place into SLOT 2.
- Picture 3: Remove one 3.5 mm Phillips screw and place into SLOT 3.

Step 8



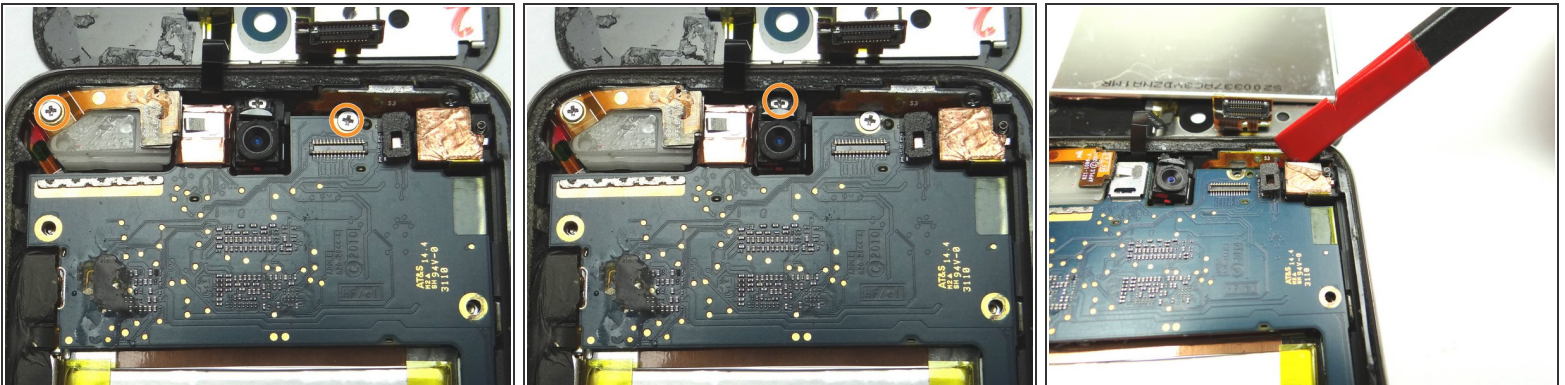
- Picture 1: Remove two 3.0 mm Phillips screws and place into SLOT 4.
- Picture 2: Remove one 2.3 mm Phillips screw and place into SLOT 5.
- Picture 3: Remove the rear camera bracket and place into SLOT 6. Avoid the tiny spring circled in red.

Step 9



- Picture 1 & 2: Use the iSesamo to pry up the metal plate from bottom edge of the rear case.
- ⓘ Note: The metal plate continues to the top of the iPod
- Picture 3: Use the Blue Pry Tool along the left edge to continue prying up the metal plate.
- Place metal plate into ZONE I.

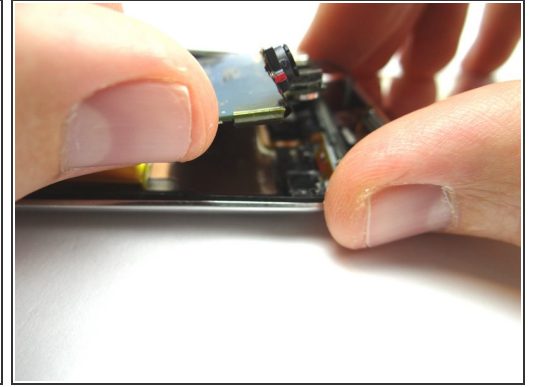
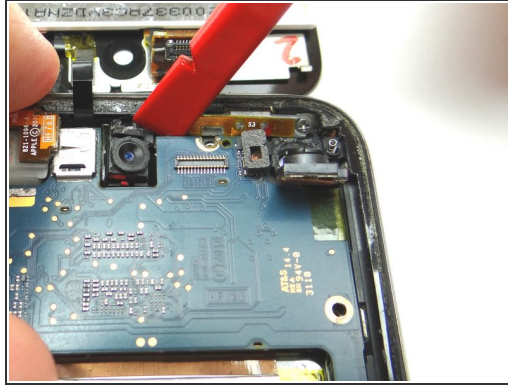
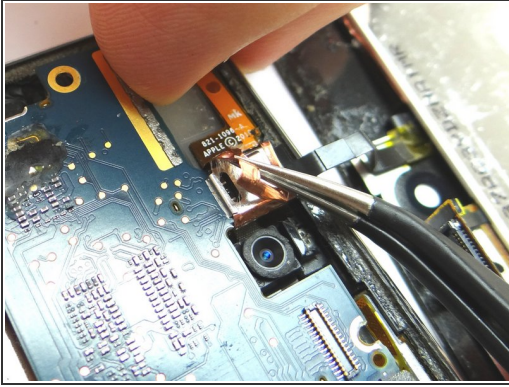
Step 10 — Removal 2.3.0 - Logic Board Top



- Picture 1: Remove two 2.3 mm Phillips screws and place into SLOT 7.
- Picture 2: Remove one 2.0 mm Phillips screw and place into SLOT 8.
- Picture 3: Use Black Spudger to lift rear camera until it's just above the logic board.

⚠ DO NOT ATTEMPT TO REMOVE THE REAR CAMERA!

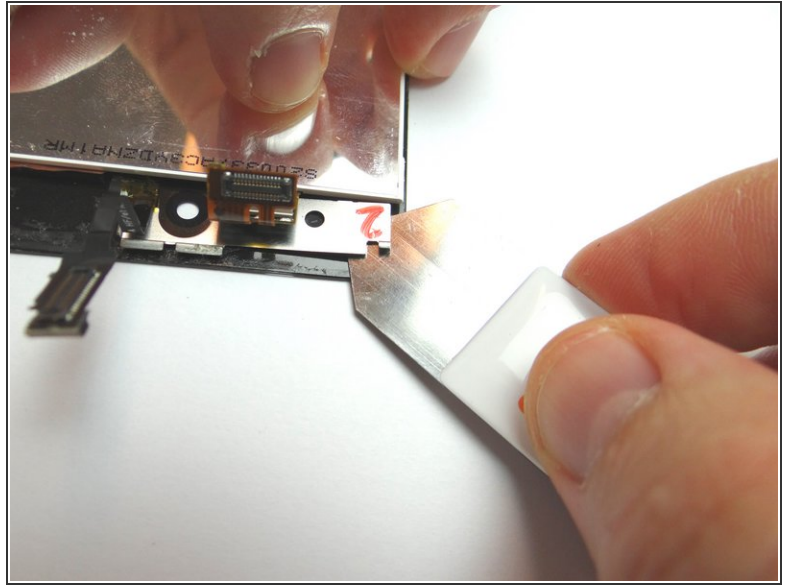
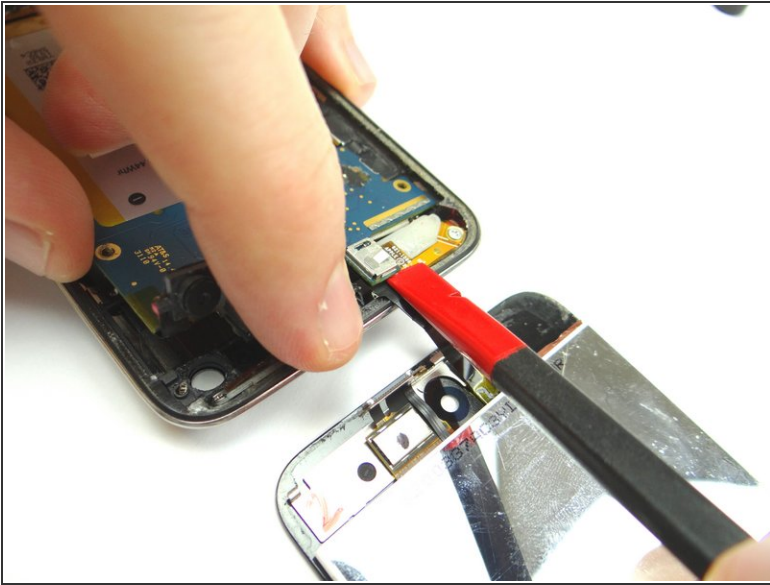
Step 11



- Picture 1: Use Curved Tip Tweezers to remove the copper tape wrapped around the digitizer's ribbon connector.
- Picture 2: Place the Black Spudger to the right of the front-facing camera and pry the logic board up slightly.
- Picture 3: Use your fingers to lift the top right of the logic board one inch above the rear case.

⚠ Ribbon cables are still attached - do not lift higher than an inch.

Step 12 — Removal 2.3.1 - Display Assembly

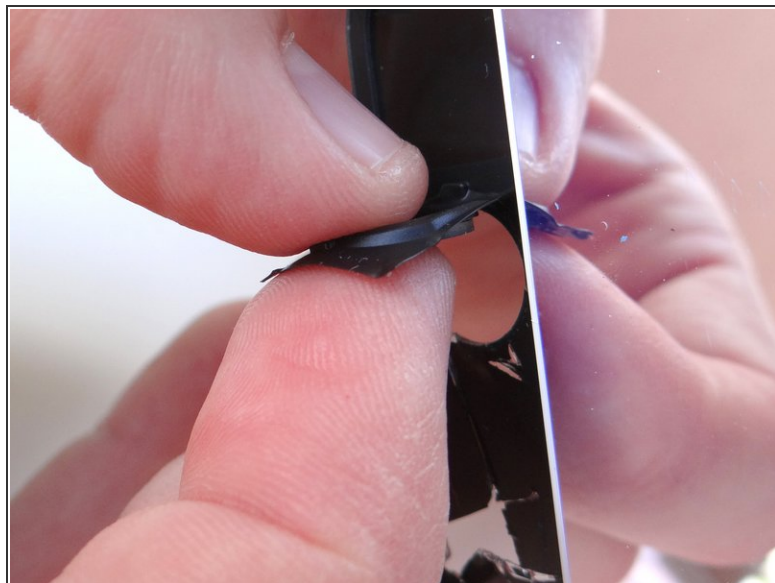
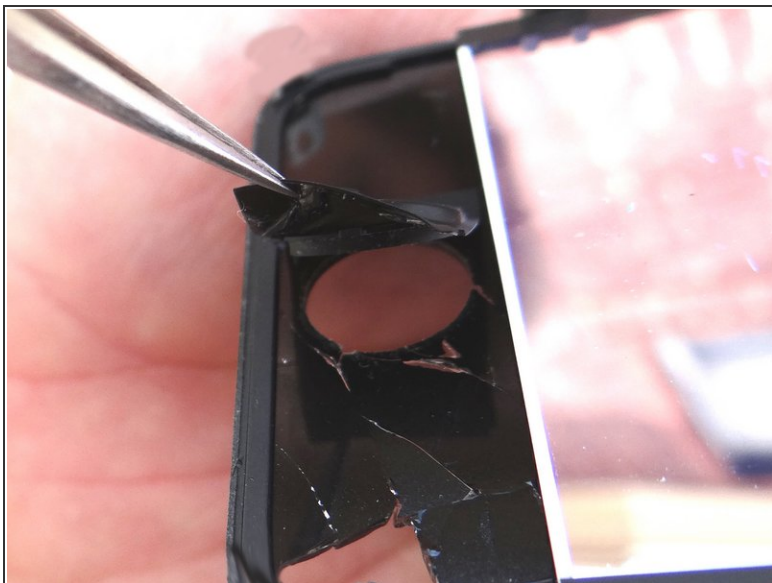


- Picture 1: Use the Black Spudger to disconnect the digitizer ribbon underneath the logic board. Separate the display assembly from the rear case.

 **Never use metal tools on a working display:**

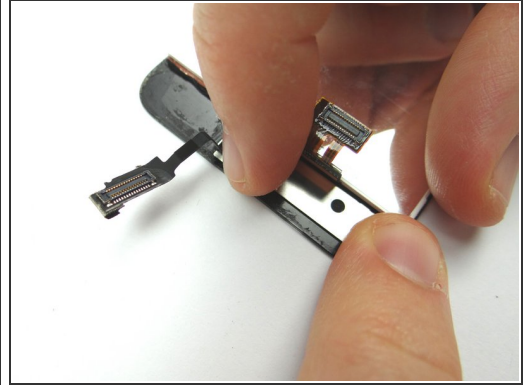
- Picture 2: Use iSesamo to dig up front-facing camera bracket. Place in COMPARTMENT A.

Step 13



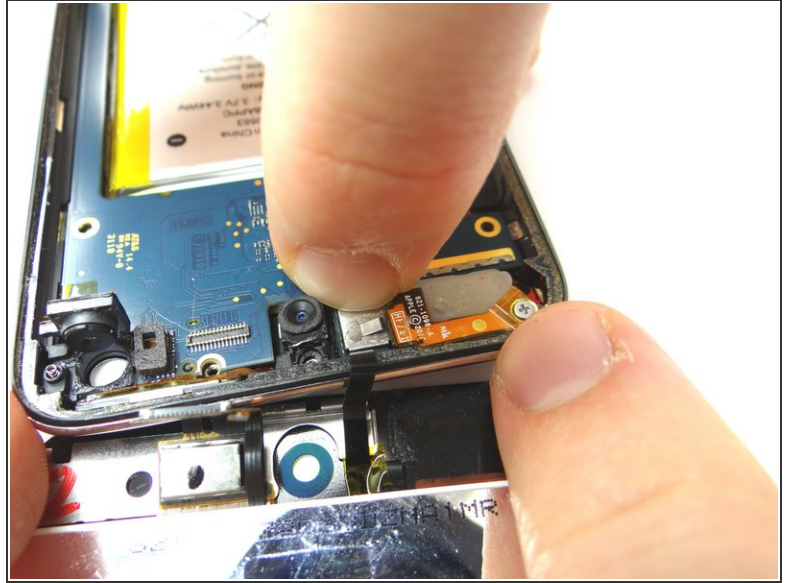
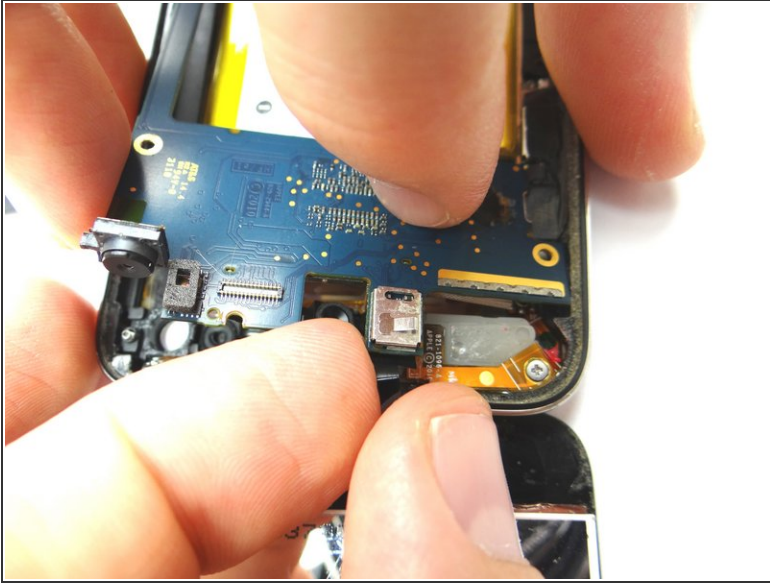
- Picture 1: Use straight-tip tweezers to pull up the edge of the home button just enough to grab it with your fingers.
- Picture 2: Peel away home button and place in COMPARTMENT B.

Step 14 — Replacement 2.3.1 - Display Assembly



- Picture 1: Place home button from COMPARTMENT B on the display assembly. Make sure the home button is aligned.
- Picture 2: On the backside, press home button into place and smooth out any wrinkles in the rubber.
- Picture 3: Place front-facing camera bracket from COMPARTMENT A on the display assembly.
- If you're replacing the display, remove the protective film on the back of the LCD.

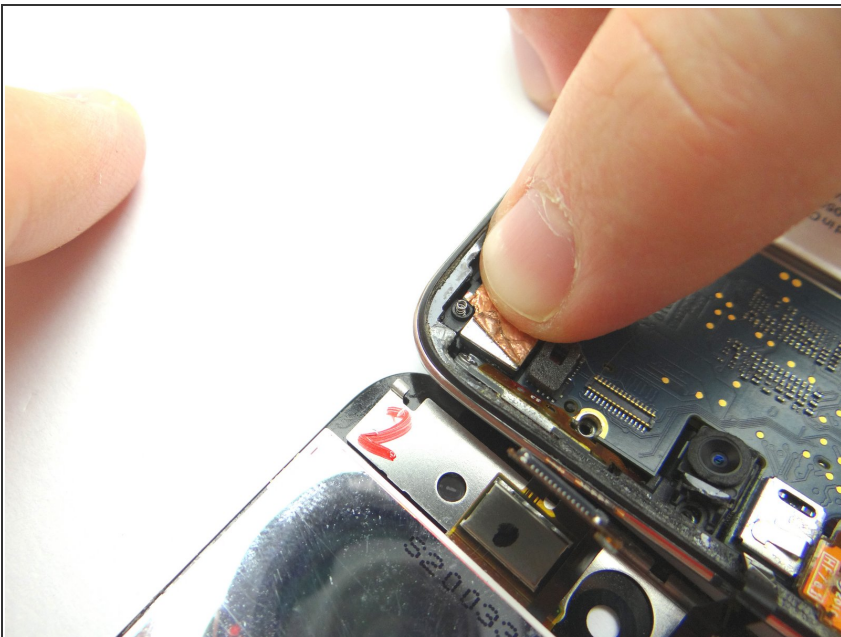
Step 15



- Picture 1: Align the digitizer ribbon connector with its socket on the underside of the logic board.
- Picture 2: Push down on the logic board to seat the digitizer ribbon connector.

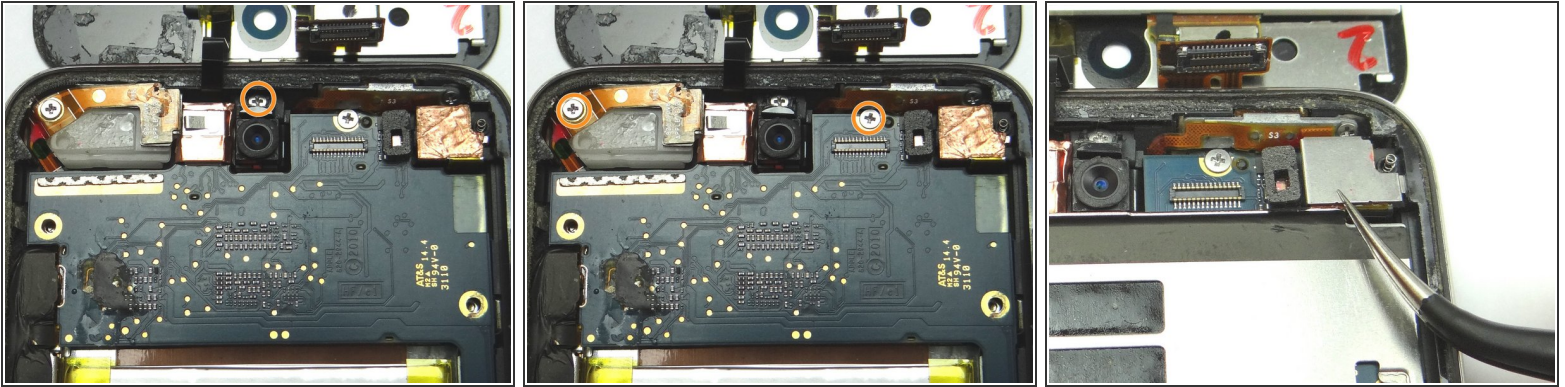
⚠ It may take several attempts to properly align and seat the connector. Don't force it - the digitizer connector should seat with minimal pressure. You'll feel a slight 'click' when it's properly seated.

Step 16 — Replacement 2.3.0 - Logic Board Top



- Picture 1: Use your finger to push the rear camera back into place.

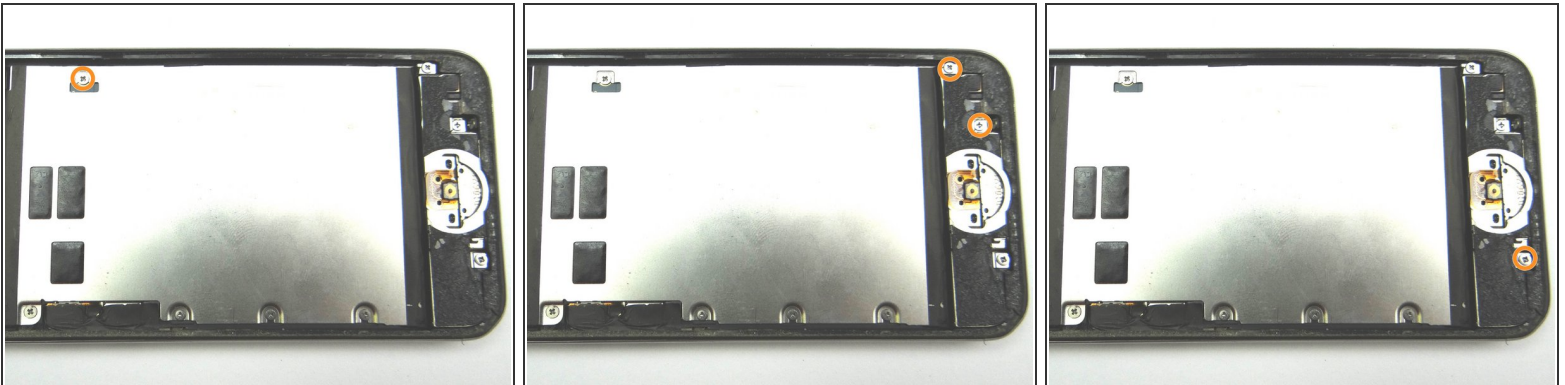
Step 17



- Picture 1: Replace one 2.0 mm Phillips screw from SLOT 8.
- Picture 2: Replace two 2.3 mm Phillips screws from SLOT 7.
- Picture 3: Replace the rear camera bracket from SLOT 6.

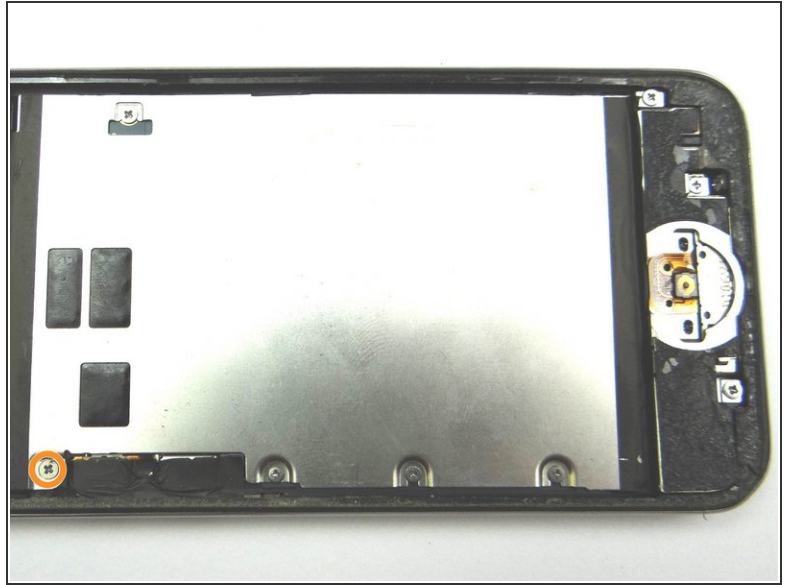
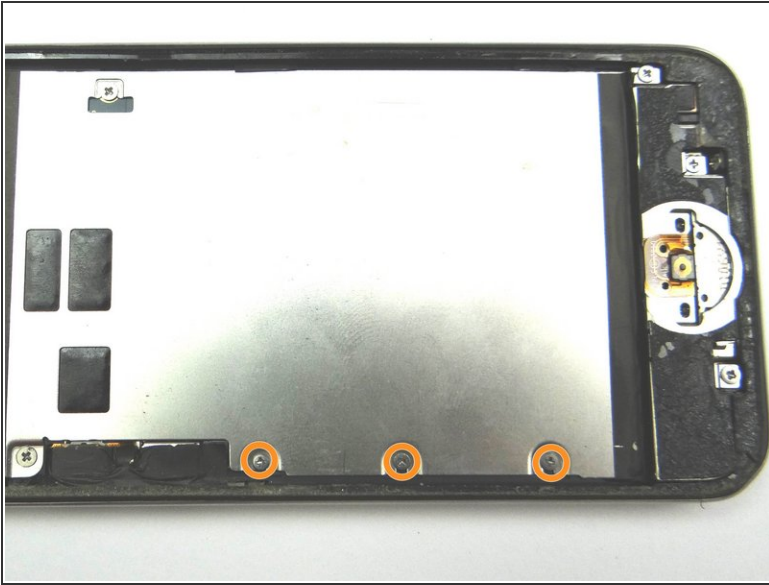
⚠ Ensure the spring right of the camera is still in place. If dislodged, re-seat it.

Step 18 — Replacement 1 - Metal Plate



- Picture 1: Replace metal plate from ZONE I.
- Picture 1: Replace one 2.3 mm Phillips screw from SLOT 5.
- Picture 2: Replace two 3.0 mm Phillips screws from SLOT 4.
- Picture 3: Replace one 3.5 mm Phillips screw from SLOT 3.

Step 19



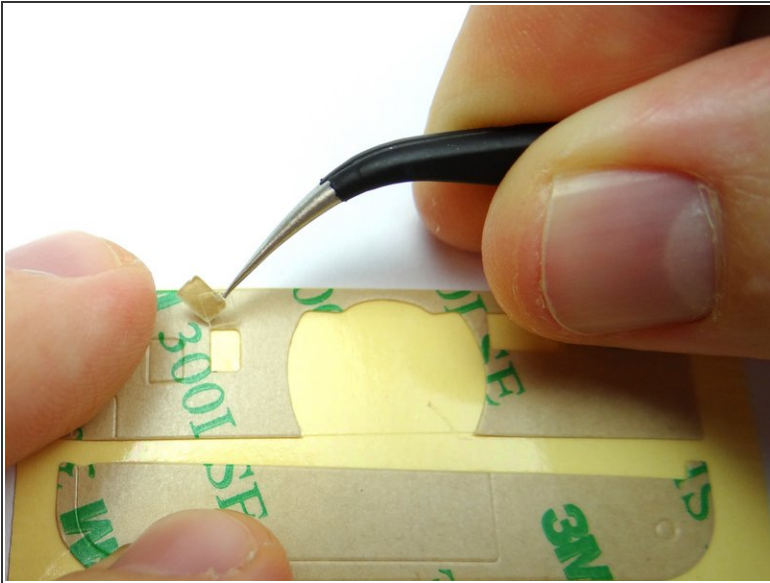
- Picture 1: Replace three 2.0 mm Phillips screws from SLOT 2.
- Picture 2: Replace one 2.4 mm Phillips screw from SLOT 1.

Step 20



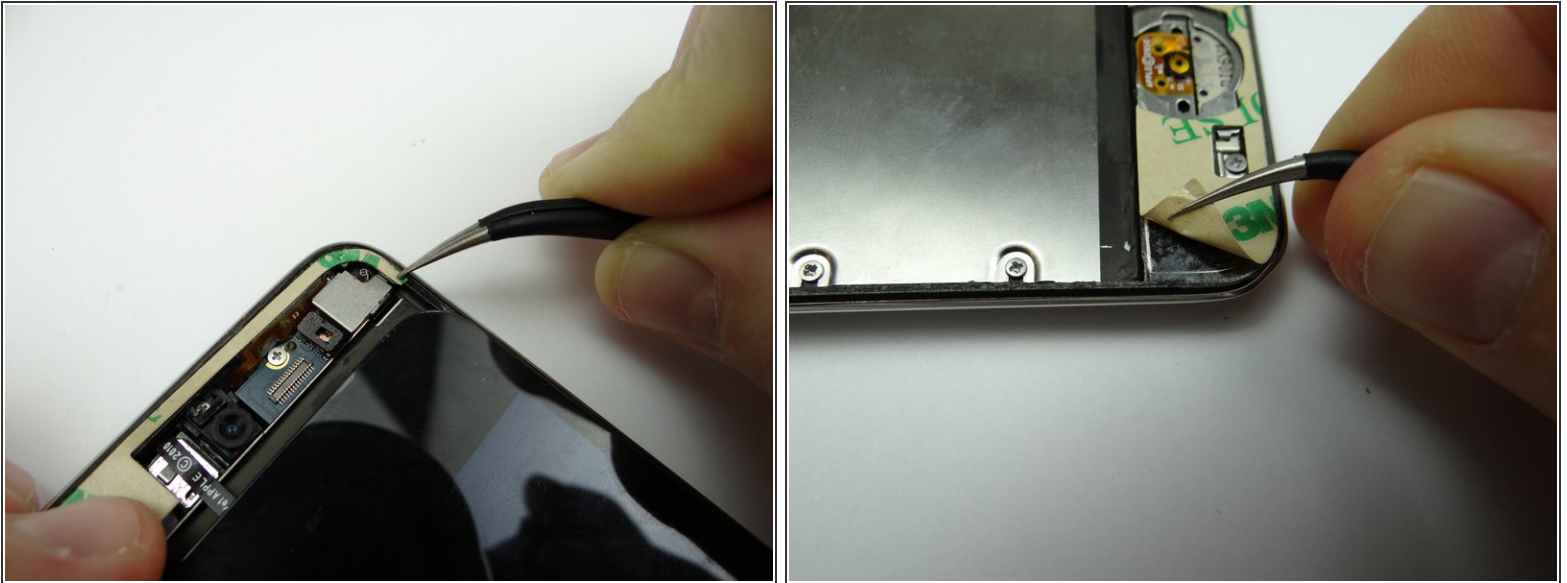
- Remove adhesive and glass shards (if any) from rear case.
- Clean adhesive from the screen.

Step 21



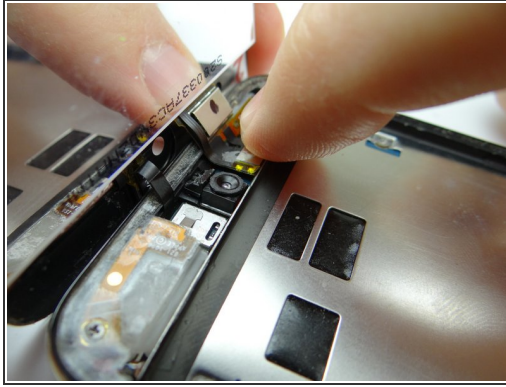
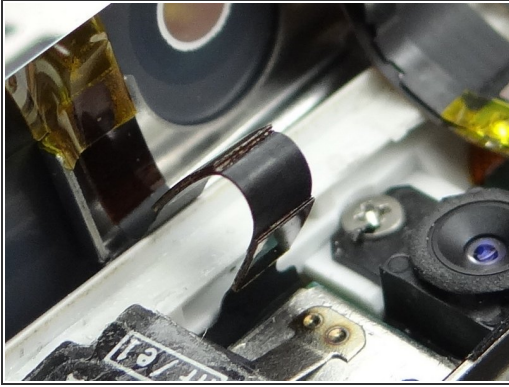
- Picture 1: Prepare new adhesive by removing the cutout portions with Curved Tip Tweezers.
- Picture 2: Fully prepared adhesive strips.

Step 22



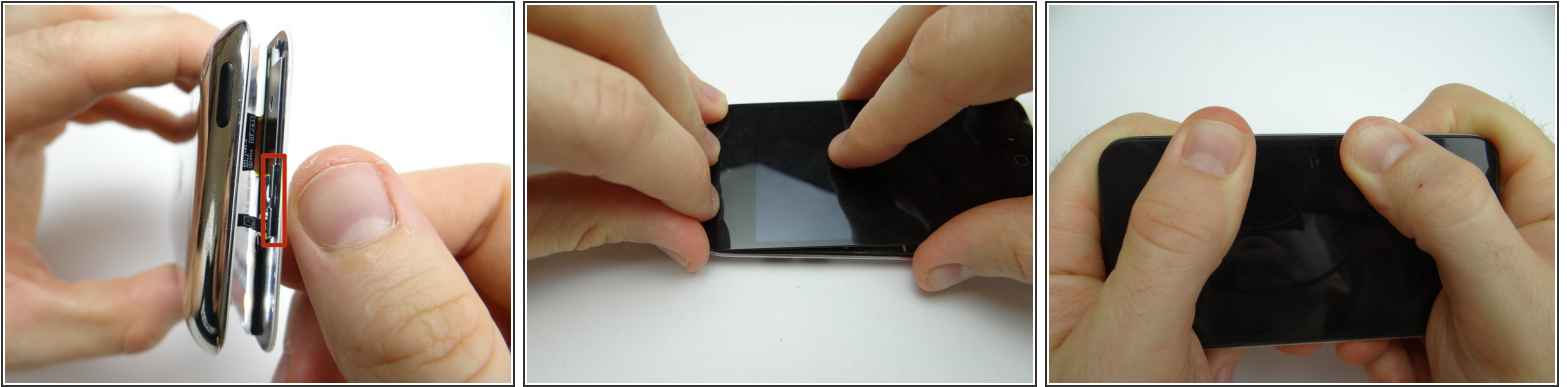
- Picture 1: Place thin adhesive strip at the top of the rear case. Use your fingers to place the upper-left corner and curved-tip tweezers to place the upper-right corner. Peel off the paper backing.
- Picture 2: Repeat with adhesive strip at the bottom, but don't close the iPod
- Tuck in any part of the adhesive hanging over the edge of the rear case, if necessary.

Step 23



- Picture 1: Make sure the digitizer cable folds into a 'Z' shape when closing the iPod.
 - Picture 2: Connect the LCD cable.
 - Picture 3: Power up and test the LCD and digitizer while holding the front panel away from the adhesive on the rear case.
- i** After reassembling an iPod, it is common to see lines down the LCD or a white screen. Try turning it off and back on. If that doesn't work, you may have to perform a soft reset. (Press and hold power and home buttons simultaneously for ten seconds). If issues with the LCD persist, try re-seating the LCD cable.

Step 24



- Picture 1: Make sure the clips on the underside of the display, near the top, seat underneath the lip on the rear case.
- Picture 2: Slide the top edge of the display assembly into the rear case.

⚠ If any of the adhesive is sticking out between the bezel and the digitizer, use the iSesamo to tuck it underneath the display assembly.

- Press top firmly into place. Press bottom of the screen firmly into place.
- Picture 3: Using light pressure, run your fingers up and down the left and right edges of the iPod to ensure the new display sits flush against the rear case.

Step 25



- Turn the iPod over and press the screen firmly into place, putting moderate pressure at the top and bottom as pictured. Hold for two minutes.
- Power up and test the device.
- Let the adhesive cure for at least 30 minutes before returning the device to the customer.