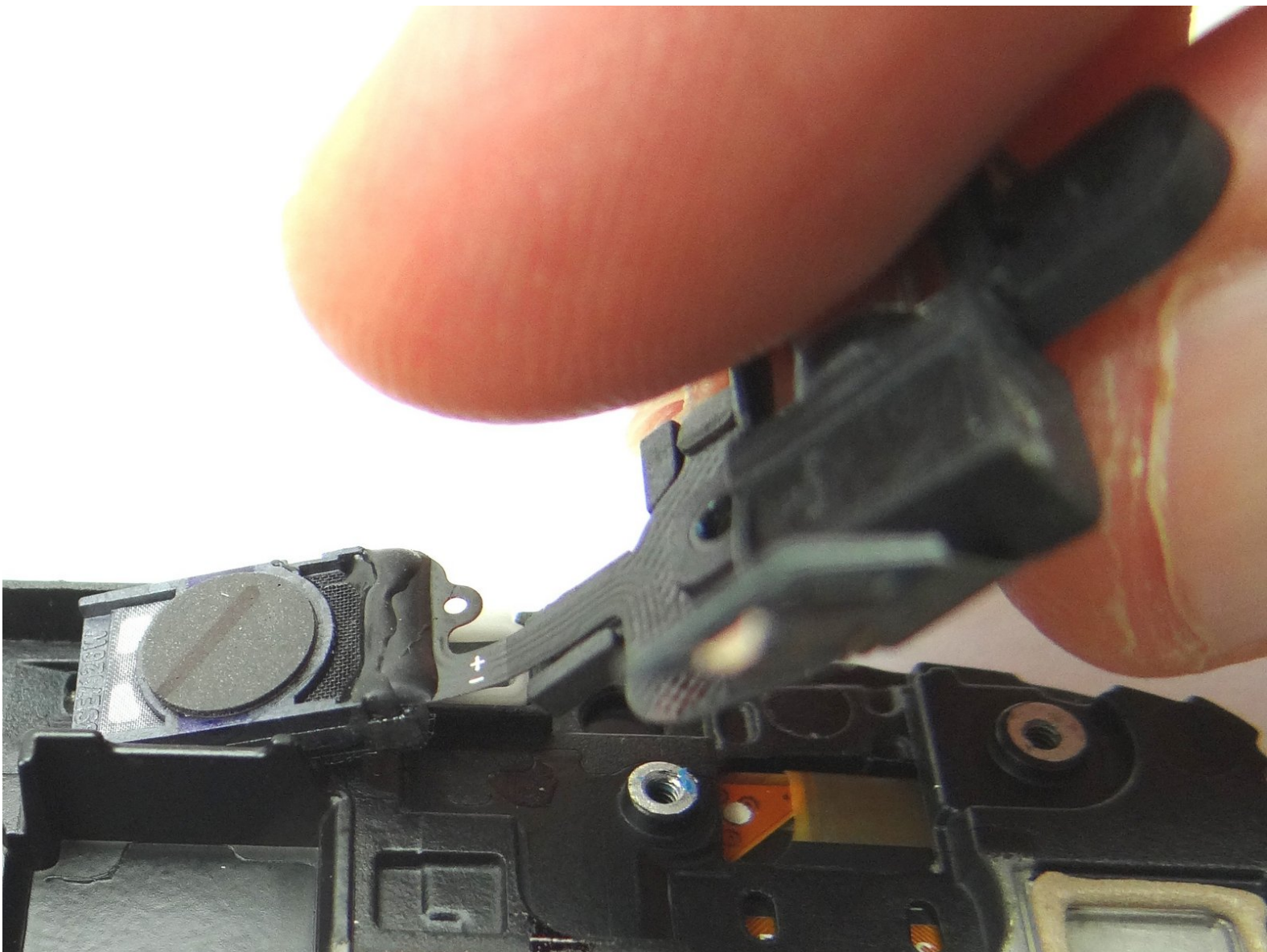


# CELLPHONESANDBOX

## Manual 04 - Headphone Jack / Earpiece Speaker

Written By: Josh Patterson





## TOOLS:

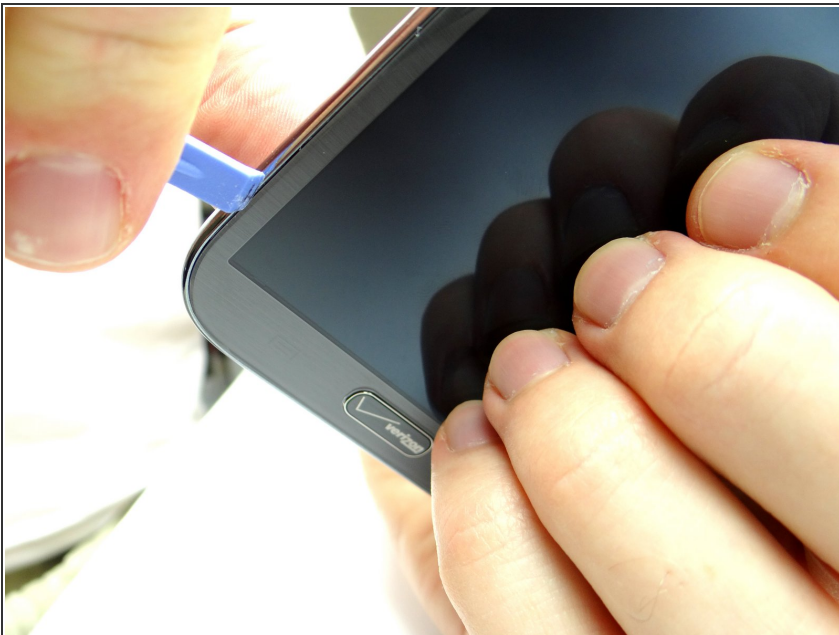
- [Technician Starter Package](#) (1)
-

## Step 1 — Removal 1 - Mid-frame



- Before disassembling the Samsung Galaxy Note 2, thoroughly wash and dry your hands.
- Remove the battery cover, battery and stylus pen. Place into ZONE I.
- Remove SIM card, and SD card. Place in COMPARTMENT A.
- Remove eleven 4.0 mm Phillips screws. Place into SLOT 1.

## Step 2



**⚠ Make sure the tip of the Blue Pry Tool is facing the bottom of the phone before inserting it between mid-frame and front panel, as in Picture 1. (picture of blue pry tool facing bottom of the phone right next to insertion point).**

- **Picture 1: Starting in the bottom right corner, use the Blue Pry Tool to separate the mid-frame from the**

front panel. Work your way around the phone until you free the mid-frame from the font panel.

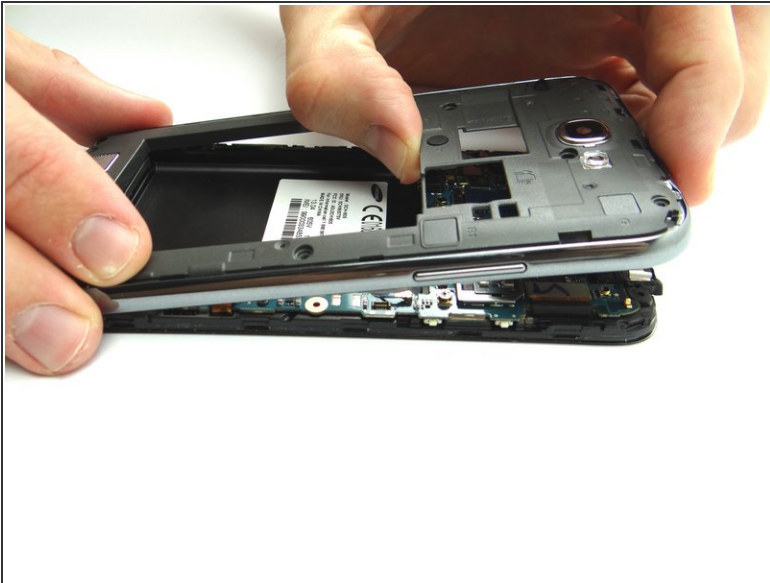
### Step 3



- Pictures 1 & 2: Use the Blue Pry Tool to free the clips on the bottom and top of the battery holding area.

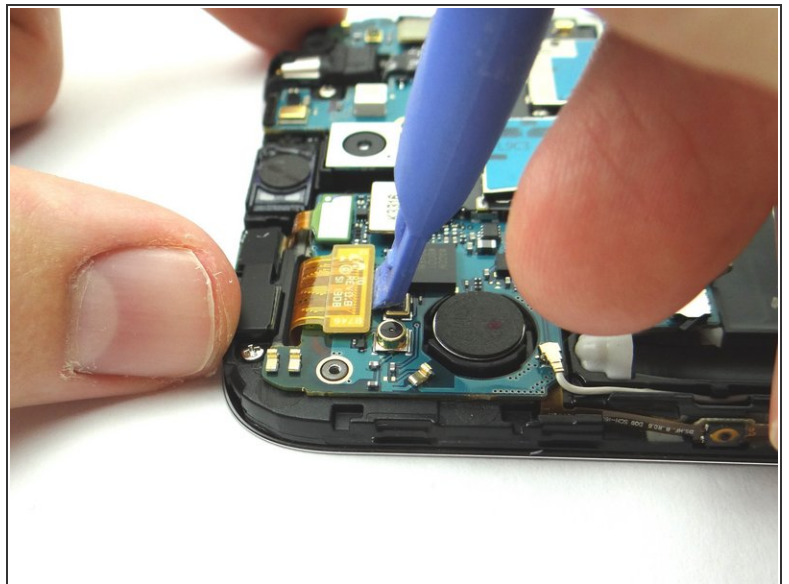


## Step 4



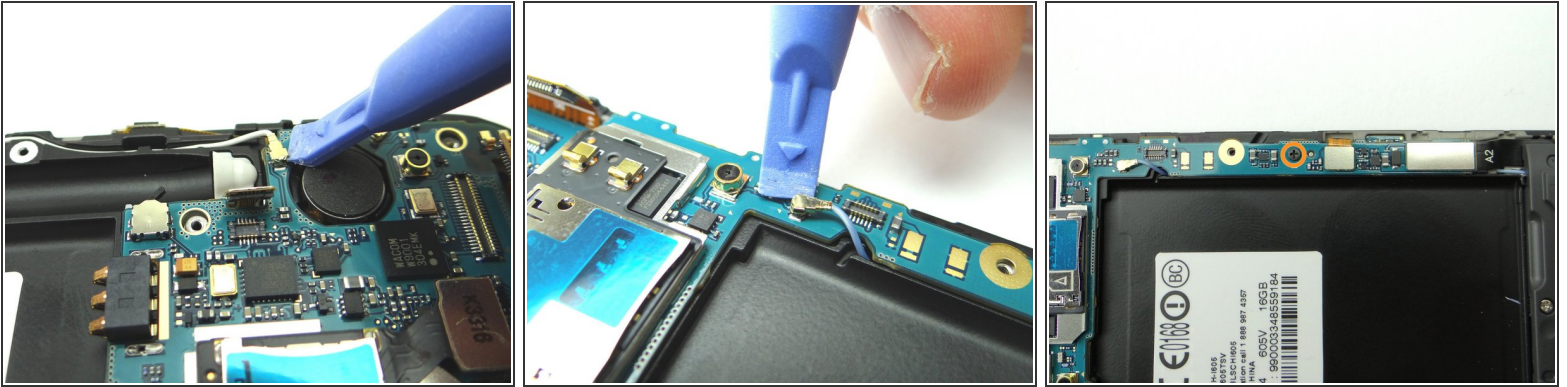
- Once all clips connecting the mid-frame to the front assembly are freed, use your fingers to gently lift the mid-frame away from the phone.
- Place mid-frame into ZONE II.

## Step 5 — Removal 2 - Logic Board



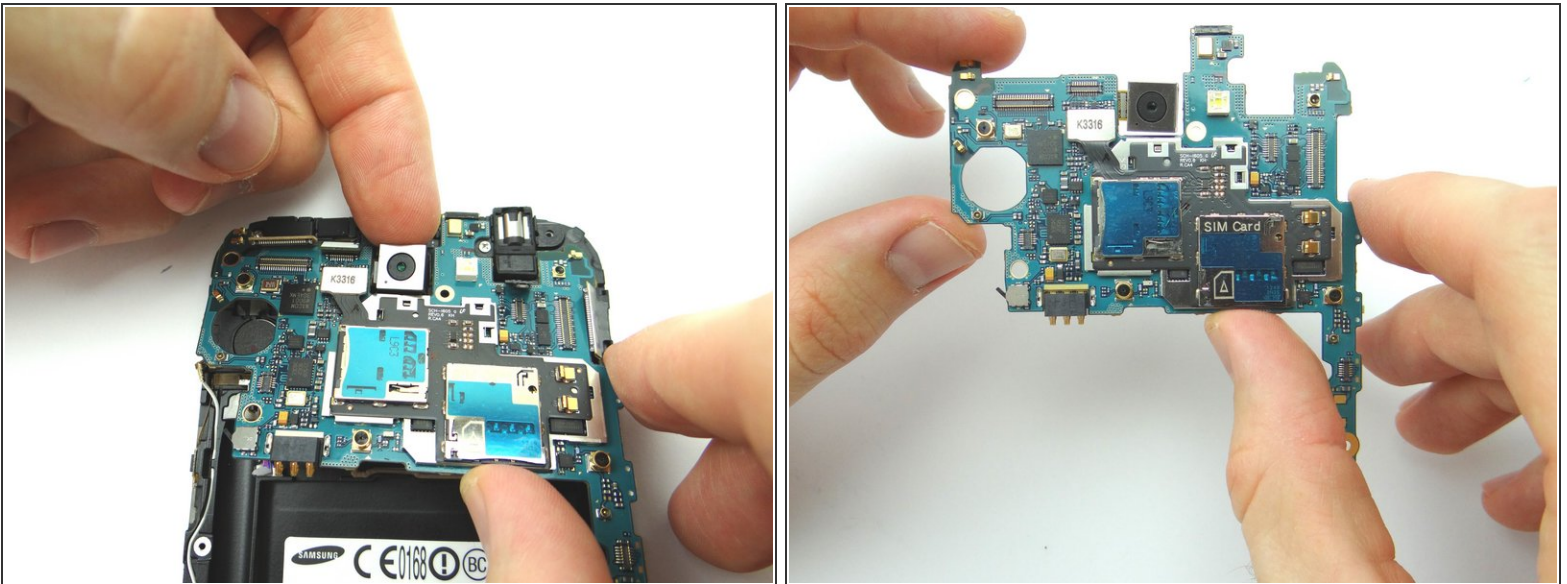
- Use the Blue Pry Tool to disconnect the seven ribbon cable connectors on the logic board.

## Step 6



- Disconnect the WiFi antenna connector.
- Disconnect the cellular antenna connector.
- Remove one 2.9 mm Phillips screw and place into SLOT 2.

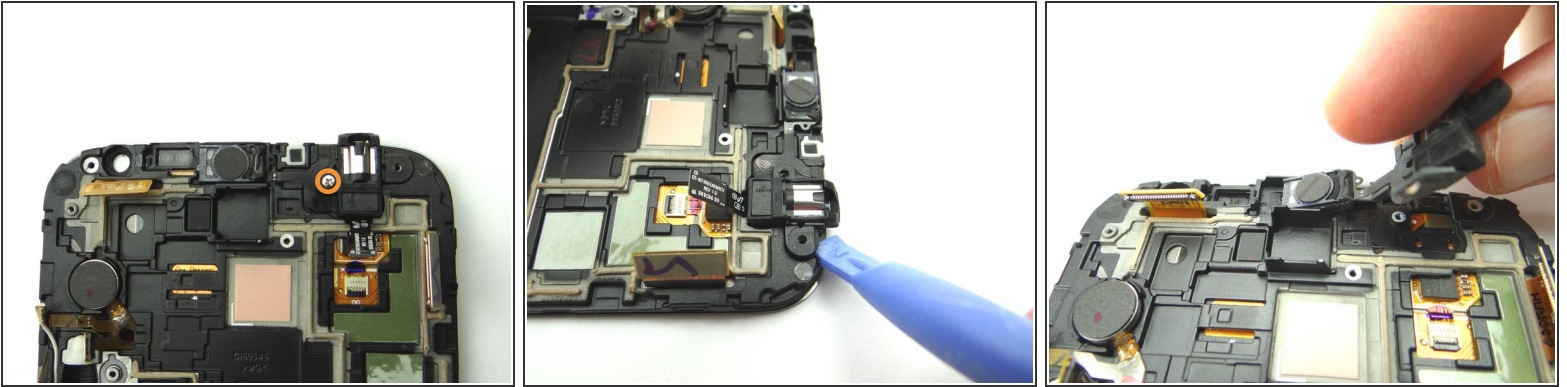
## Step 7



- Use your index finger to gently ease the camera out of its position while lifting the logic board.
- Use your fingers to brush away any ribbon cables while you remove the logic board. Place into ZONE III.

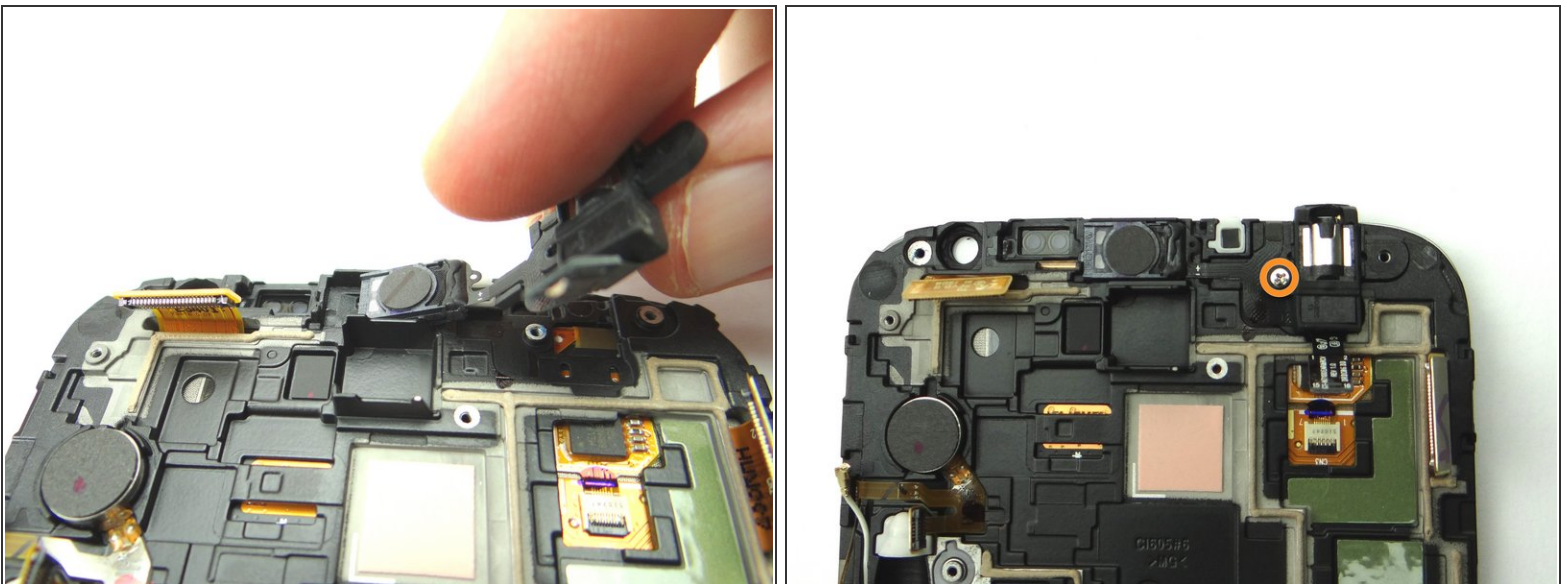


## Step 8 — Removal 2.2 Headphone Jack / Earpiece Speaker



- Remove one 2.9 mm Phillips screw and place into SLOT 4.
- Use the Blue Pry Tool to lift the headphone jack from its position.
- Use your fingers to continue to remove the headphone jack/earpiece speaker from right to left freeing the earpiece speaker from its adhesive. Place into COMPARTMENT C.

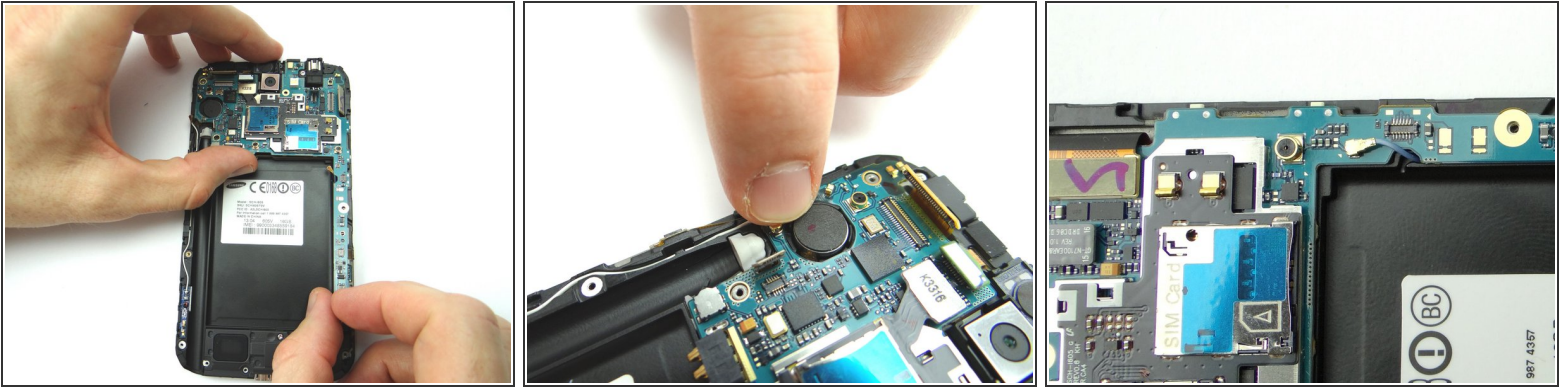
## Step 9 — Replacement 2.2 - Earpiece Speaker / Volume Button Assembly



- Replace the headphone jack/earpiece speaker from COMPARTMENT C.
- Replace one 2.9 mm Phillips screw from SLOT 4.



## Step 10 — Replacement 2 - Logic Board



- Replace the logic board from ZONE III. Ensure none of the ribbon cable connectors get stuck under the logic board.
- Reconnect the WiFi antenna connector.
- Reconnect the cellular antenna connector.

## Step 11



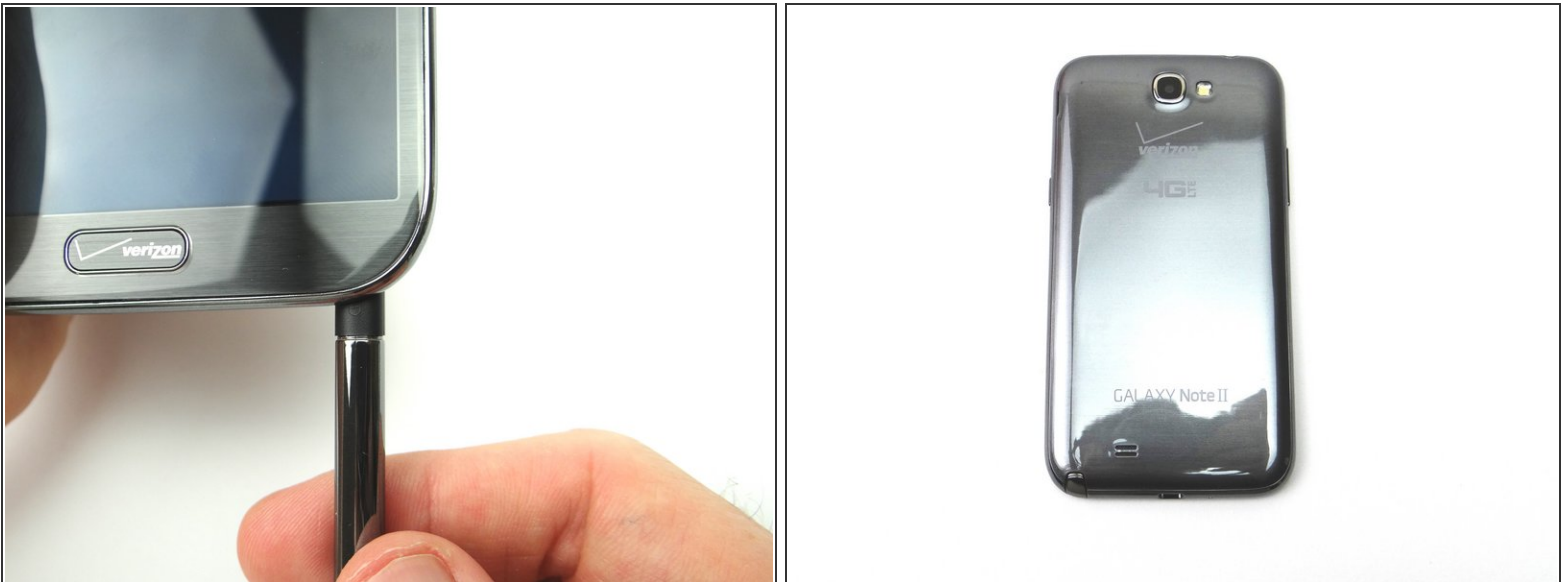
- Replace one 2.9 mm Phillips screw from SLOT 2.
- Reconnect the seven ribbon cable connectors to the logic board.

## Step 12 — Replacement 1 - Mid-frame



- Replace mid-frame from ZONE II.
- Replace eleven 4.0 mm Phillips screws from SLOT 1.
- Replace the SIM card and SD card from COMPARTMENT A.

## Step 13



- Replace the battery cover, battery and stylus pen from ZONE I.