

CELLPHONESANDBOX

Manual 02 - Battery

Written By: James Linder

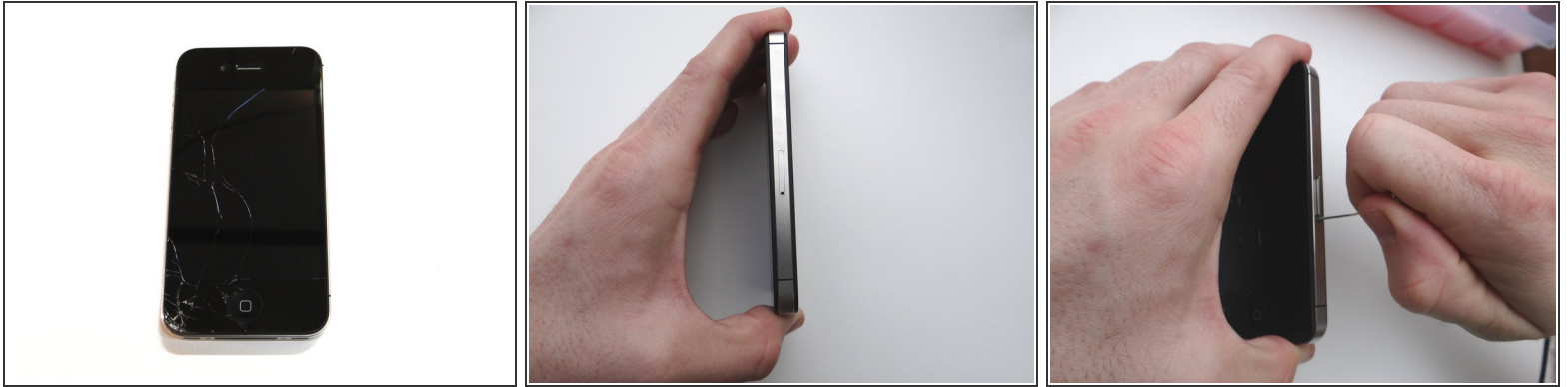




TOOLS:

- [Technician Starter Package](#) (1)
-

Step 1 — Removal 1 - Battery Cover



- Before disassembling the iPhone, thoroughly wash and dry your hands.
- Make sure handset is powered off. Use a SIM card eject tool or a paperclip to eject the SIM card tray. This may require a significant amount of force.
- Place the SIM card and SIM card tray in COMPARTMENT A.

Step 2



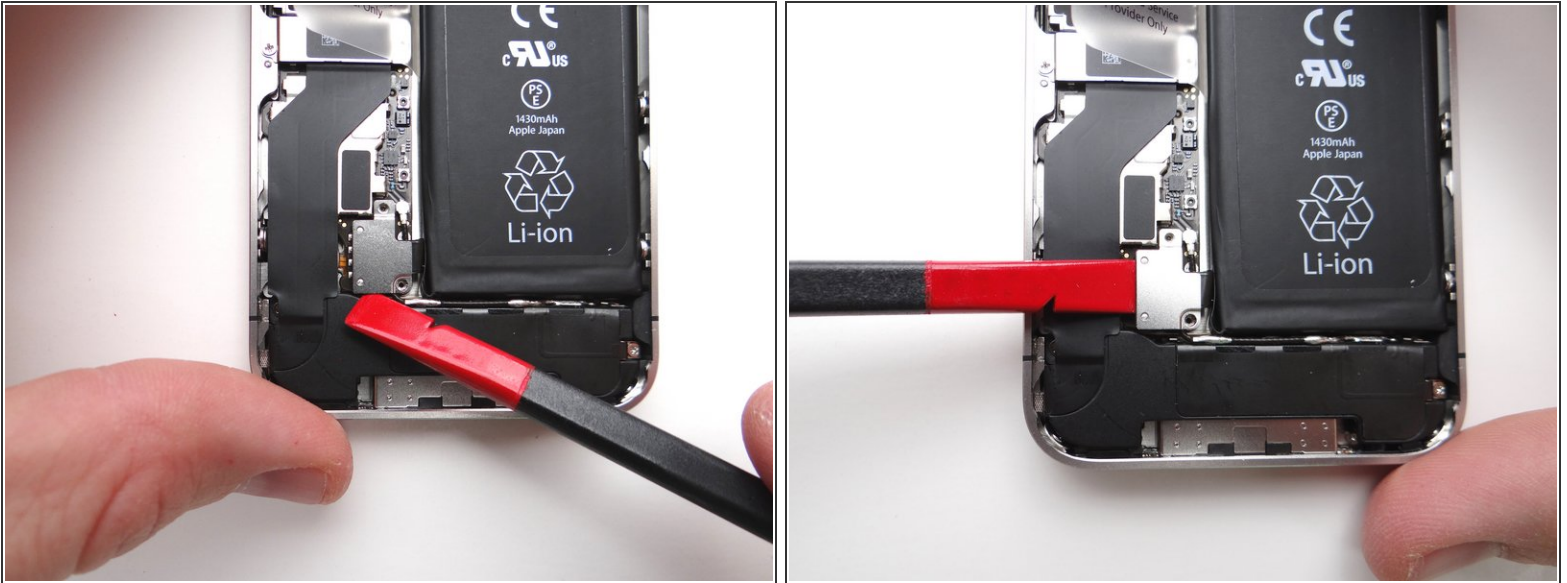
- Place the handset in your non-dominant hand. Remove two Pentalobe screws near charging port with special 5-point Pentalobe screwdriver. Place screws in SLOT 1.
- Gently slide battery cover upwards. Pull battery cover away from iPhone. Place battery cover in ZONE I.

Step 3 — Removal 2 - Battery



- Picture 1: Remove 1.7 mm Phillips screw and place it in SLOT 2.
- Picture 2: Remove 1.5 mm Phillips screw place it in SLOT 3.
- Picture 3: Use Fine Point Tweezers to remove the L-Shaped Antenna Shield before releasing the battery connector. Place the Antenna Shield with the screw in SLOT 3.

Step 4



- Picture 1: Place the flat end of the Black Spudger (tip is painted red for better illustration) at the bottom of the battery connector. Twist the spudger counter-clockwise to lift the bottom of the connector from its socket.

⚠ Be very careful to only pry up on the battery connector and not the socket on the logic board. If you pry on the socket, you could break the socket off the logic board.

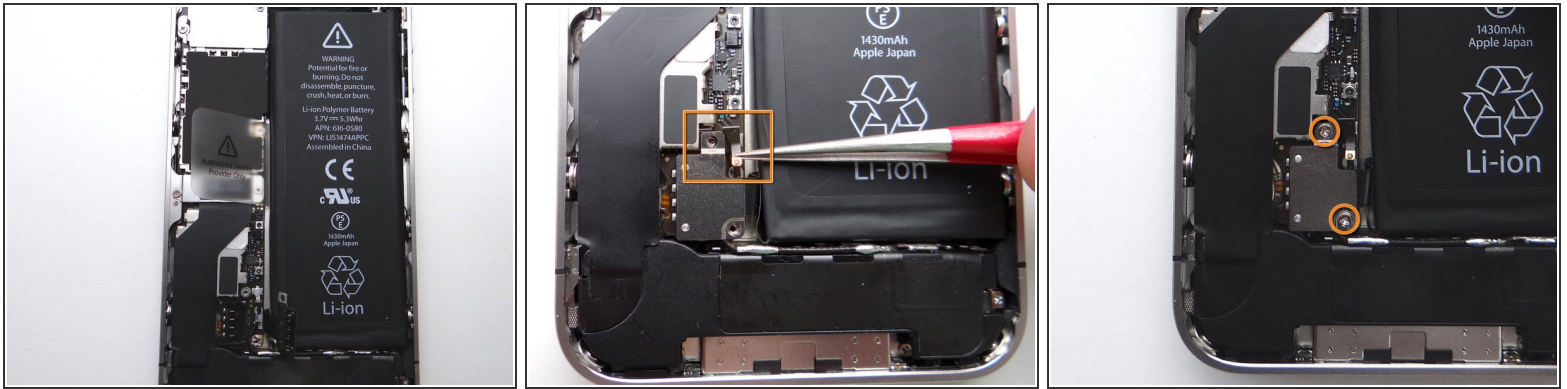
⚠ Picture 2: After freeing the bottom of the connector, finish freeing it by inserting the spudger from the side and slowly lifting. Again, be careful to only pry on the battery connector and not the socket on the logic board.


Step 5



- Apply low-level heat (100* Celcius or less) to edges of battery for 60 seconds to loosen the adhesive securing the battery to the iPhone.
- Wedge the flat end of the Black Spudger on the right edge of the battery. Gently pry up in three or four spots along the right edge to release the adhesive adhering it to the mid-frame.
- Once loose, use the plastic pull tab to peel the battery free from the iPhone. Place the battery in ZONE II.

Step 6 — Replacement 2 - Battery



- Picture 1: Place the battery from ZONE II (or replacement part) in the mid-frame.
- Push battery connector into its socket on the logic board.
- Picture 2: With Fine Point Tweezers, place the L-Shaped Antenna Shield from SLOT 3 between the battery connector and its socket.
-  Make sure the screw slot on the battery connector lines up with the screw slot on the Antenna Shield, and that they both line up with the screw slot on the battery socket. If needed use tweezers to adjust its position.
- Picture 3: Use the 1.5 mm Phillips screw from SLOT 3 to secure the top of the battery connector.
- Picture 3: Use the 1.7 mm Phillips screw from SLOT 2 to secure the bottom of the battery connector.

Step 7 — Replacement 1 - Battery Cover



- Replace battery cover from ZONE I (or replacement part). Gently slide battery cover downward until it locks into place.
- Place the handset in your non-dominant hand, then replace two Pentalobe screws near charging port with special 5-point Pentalobe screwdriver. The screws are in SLOT 1.
- Replace the SIM card and SIM card tray from Sandbox COMPARTMENT A.