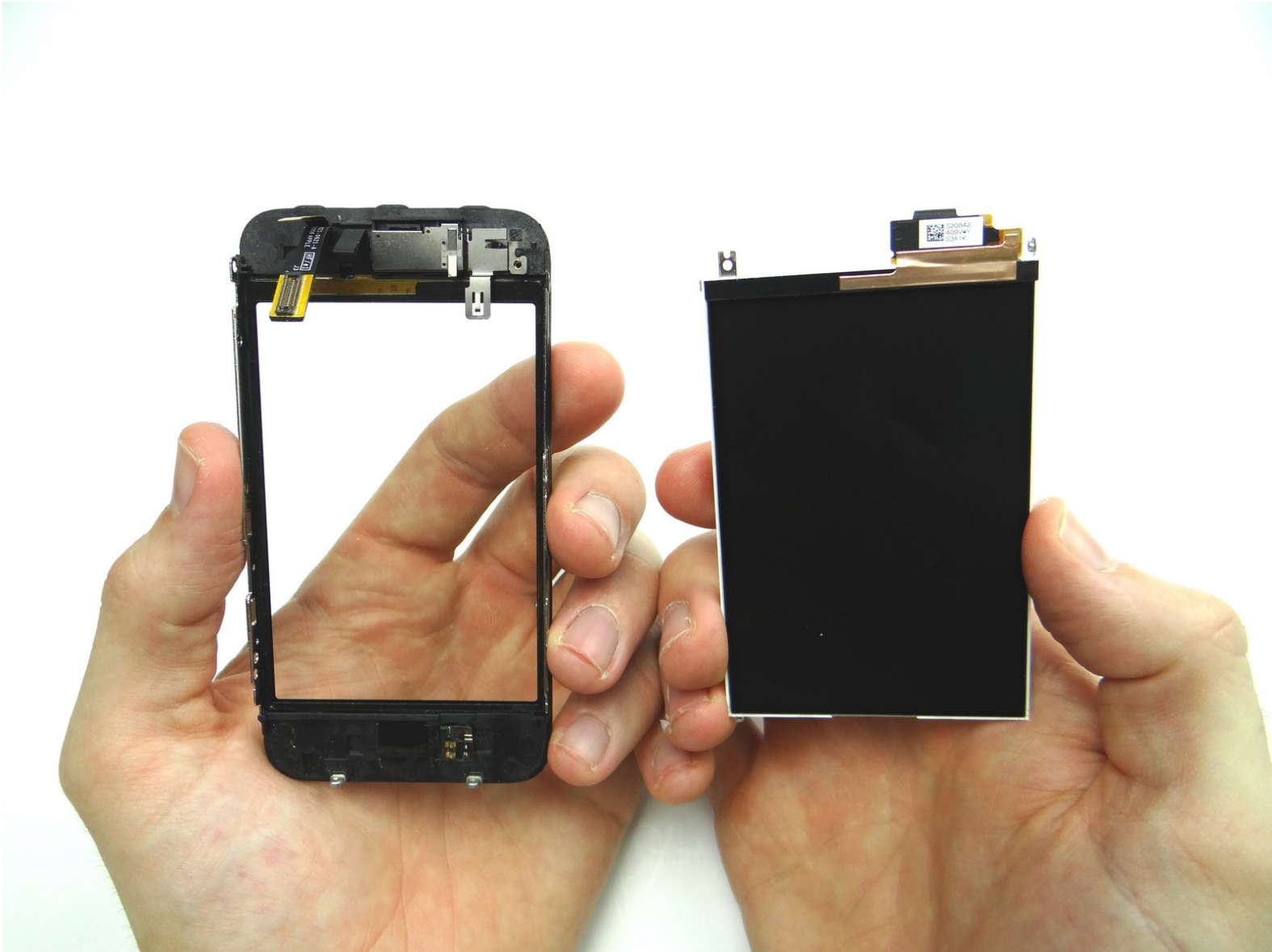


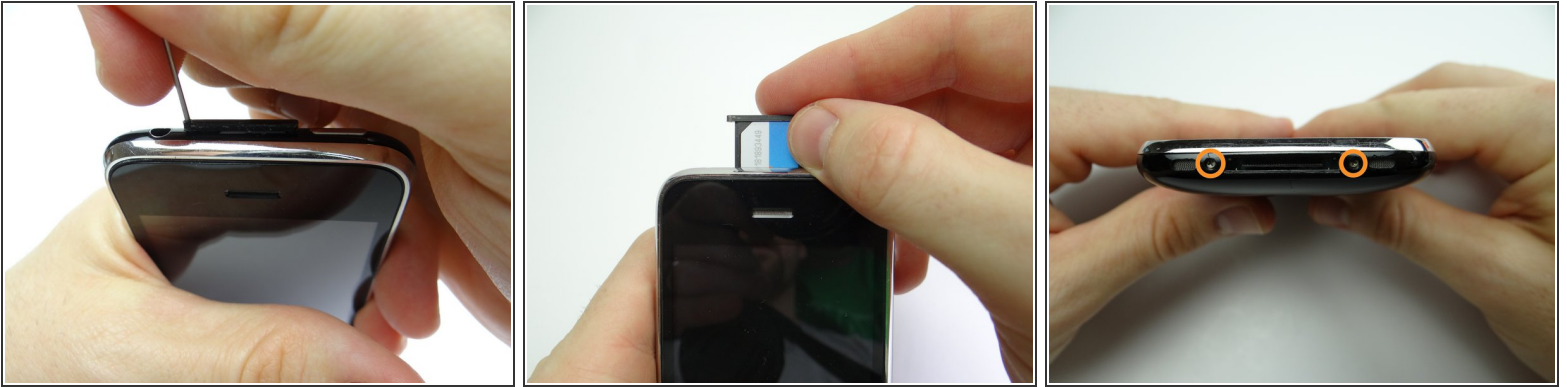
CELLPHONESANDBOX

Manual 01 - LCD or Digitizer

Written By: James Linder



Step 1 — Removal 1 - Front Panel



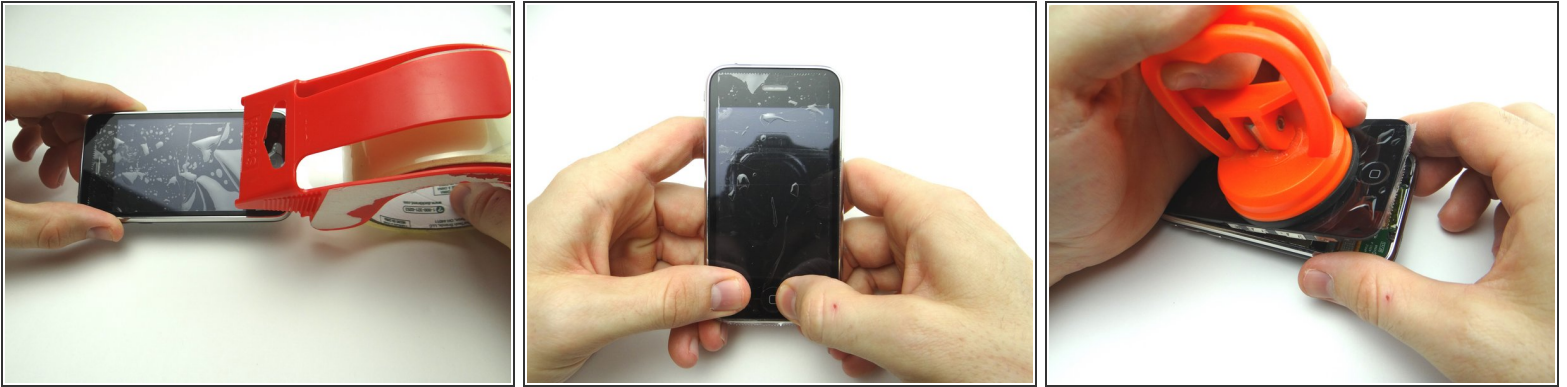
- Remove the SIM Card Tray and SIM Card. Place in COMPARTMENT A
- Remove two Phillips #00 screws and place in SLOT 1.

Step 2



- Picture 1: Place the suction cup on the screen just above the home button.
- Picture 2: Pull the Front Panel up just enough to wedge the Blue Pry Tool in between the front panel and rear case.
- Picture 3: Pry up just enough to grab the screen with your fingers. Remove the suction cup.

Step 3



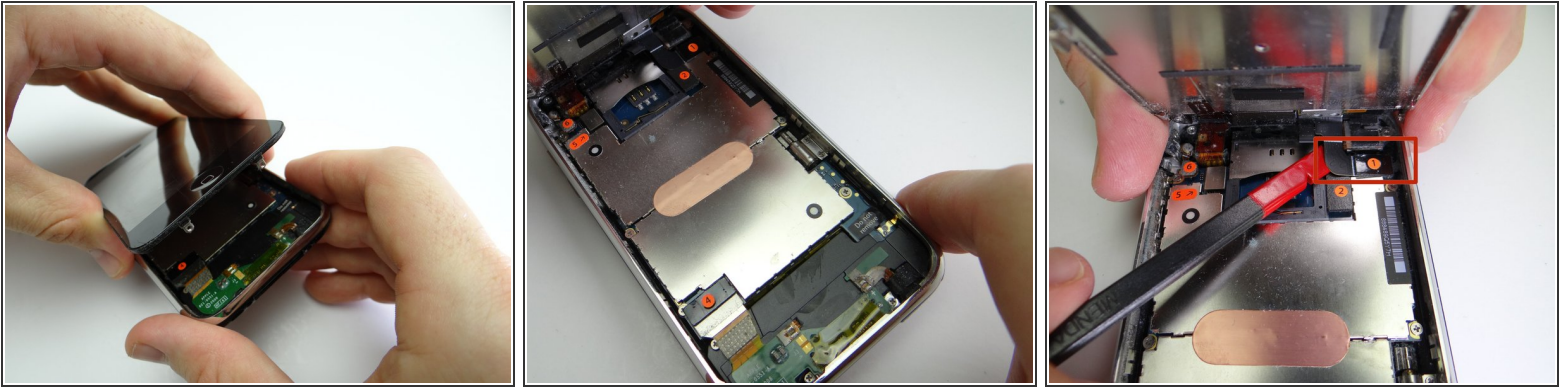
- Picture 1: If you're replacing a cracked display, put a strip of packing tape across the screen.
 - Picture 2: Seal the tape over the home button to ensure it comes up with the screen.
 - Picture 3: Pry up just enough to grab the screen with your fingers. Remove the suction cup.
- i** If the screen still won't open, there's still another option for opening it in the next step.

Step 4



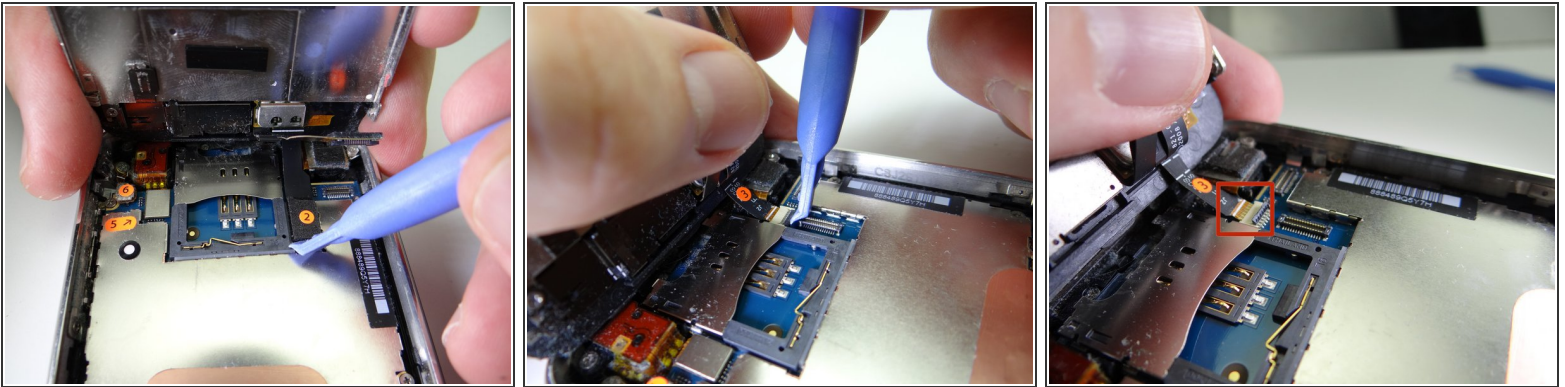
- If you're still unable to open the iPhone, use an iSesamo tool as a last resort:
- Picture 1: Wedge the iSesamo along the bottom edge of the iPhone near the corner.
- Picture 2: Pry up just enough to insert the blue pry tool.
- Picture 3: Use the blue pry tool to continue prying up the screen.

Step 5



- Pictures 1 & 2: Carefully continue pulling up the front panel until it reaches a 45° angle.
- Picture 3: While holding the front panel at a 45° angle, wedge spudger under cable '1' and rotate counter-clockwise until cable head is free.

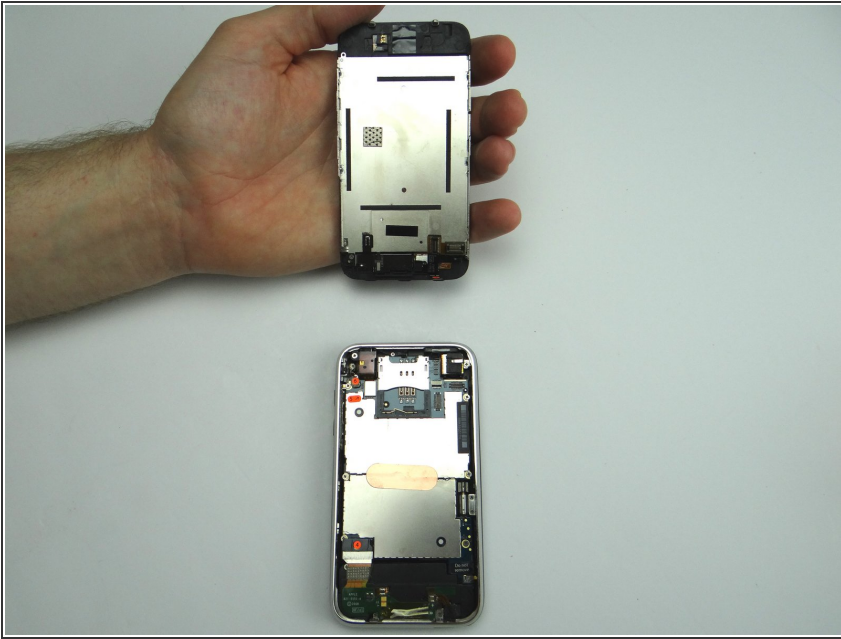
Step 6



- Picture 1: Use blue pry tool to lift cable 2 from its socket. You can now open the phone to a 90°* angle.
- Pictures 2 & 3: Use the blue pry tool to flip the ZIF connector into the upright 'open' position to release the ribbon cable marked '3'.
- Use your thumb to gently guide the ribbon cable out of the ZIF connector.

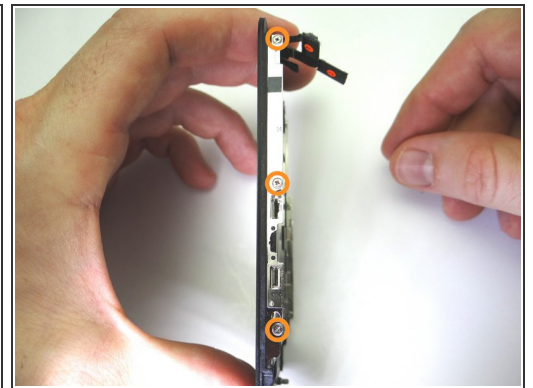
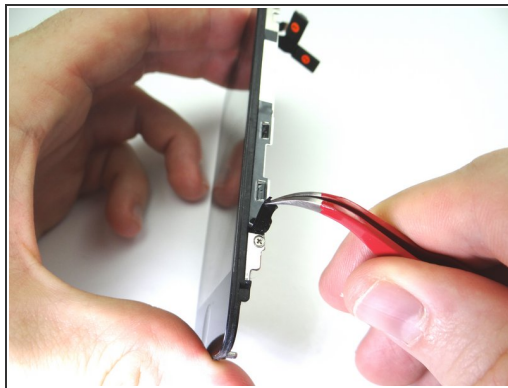
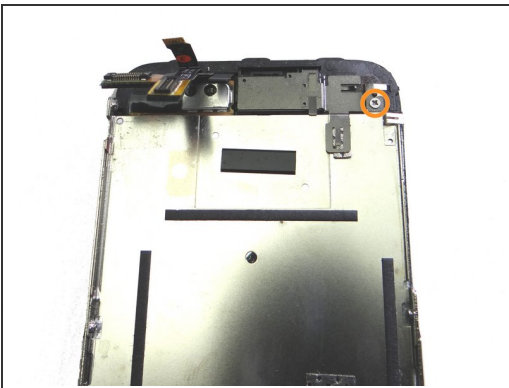
⚠ Cable '3' should come out with very little pressure. Double-check the ZIF connector latch if you feel tension.

Step 7



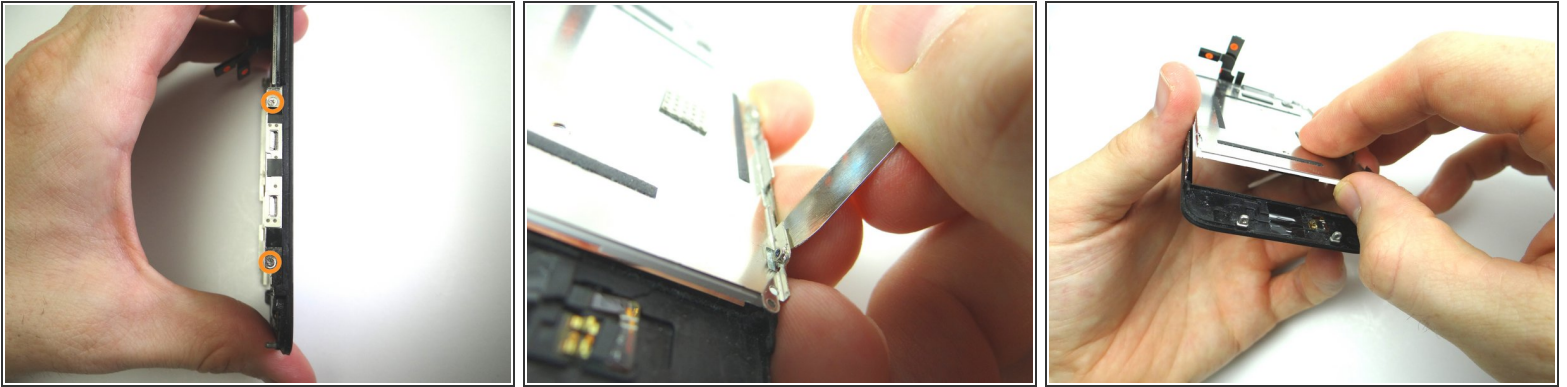
- Separate the front panel from the rear case.
- Place front and rear panels in ZONES I & II.

Step 8 — Removal 2.1.1 - LCD



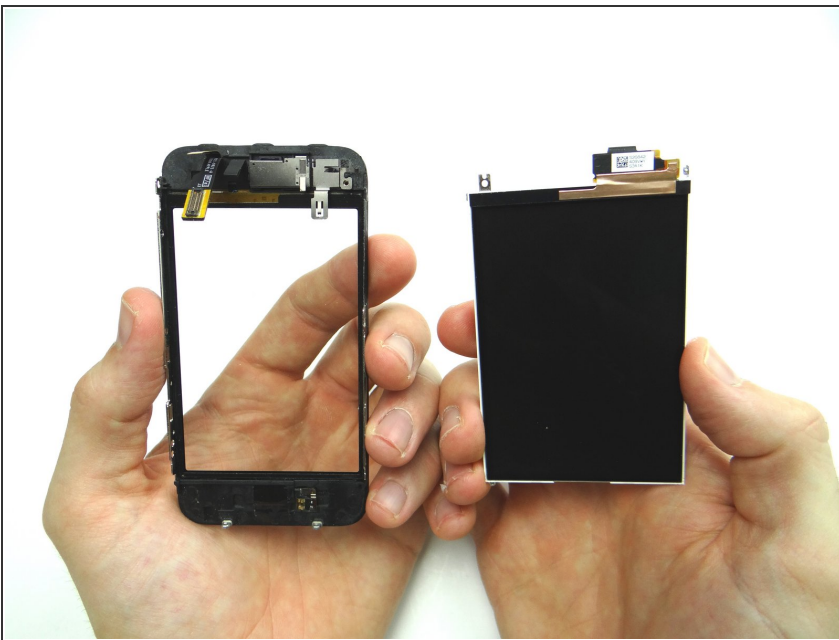
- Picture 1: Remove the 1.6 mm Phillips screw from bracket on the back of the screen. Place in SLOT 2.
- Picture 2: Remove electrical tape from the left side of the display (if it's there).
- Picture 3: Remove three 1.7mm Phillips screws. SLOT 3.

Step 9



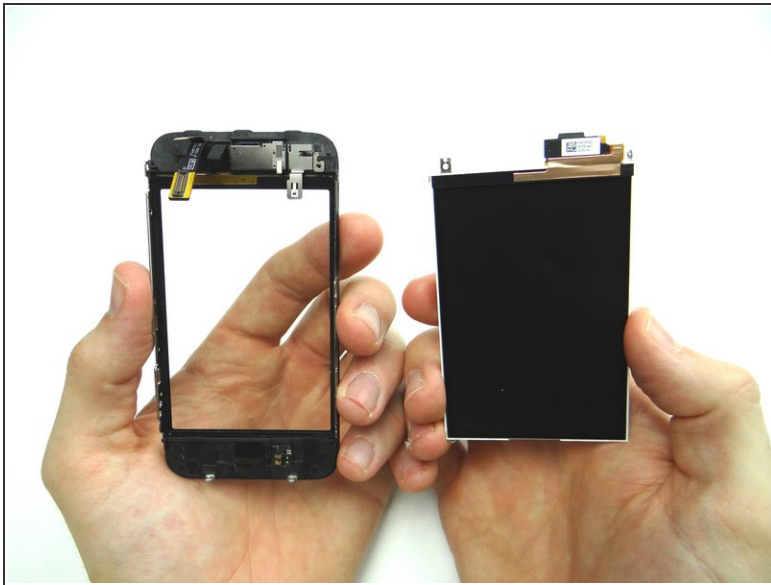
- Remove two 1.7 mm screws from right side of front panel. Place in SLOT 3.
- Wedge metal spudger between the back plate and side frame. Gently rotate the spudger to lift the LCD up from the glass.
- Grab the bottom edge of the LCD to lift it away from the glass digitizer.

Step 10



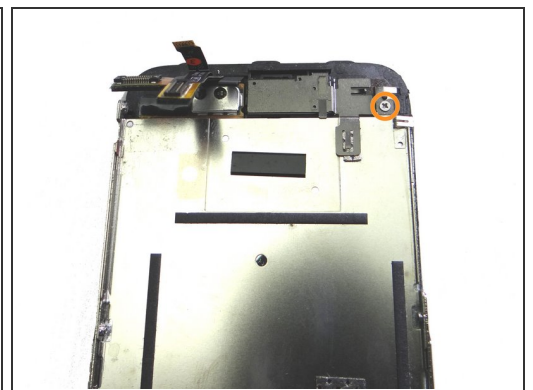
- Separate the glass digitizer from the LCD.
- Place into ZONES I & II.

Step 11 — Replacement 2.1.1 - LCD



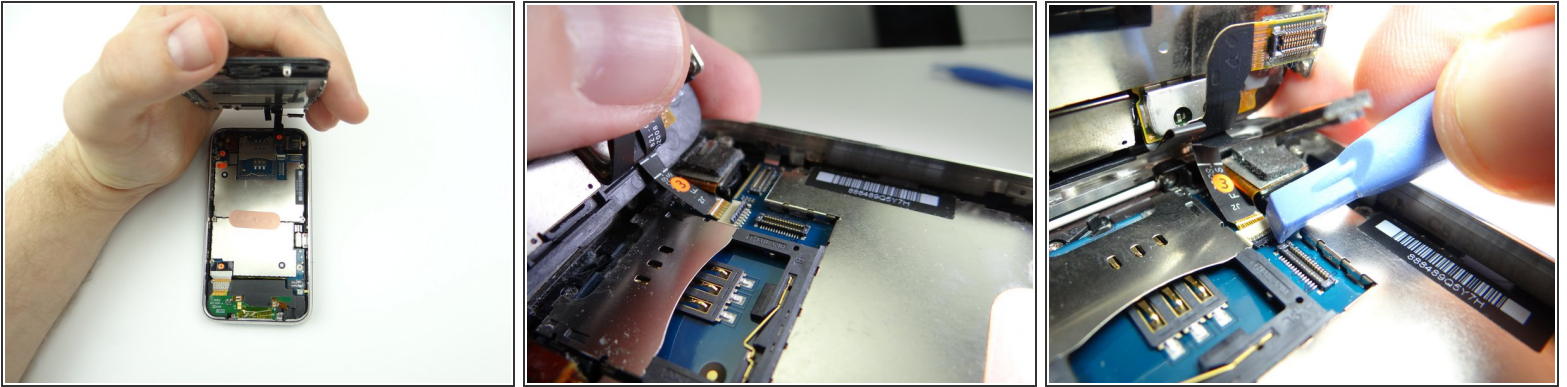
- Retrieve digitizer and LCD from ZONES I & II.
- ☑ Check the original part for fingerprints. Clean fingerprints with chamois cloth and dust-off.
- Place LCD in its frame on the digitizer.

Step 12



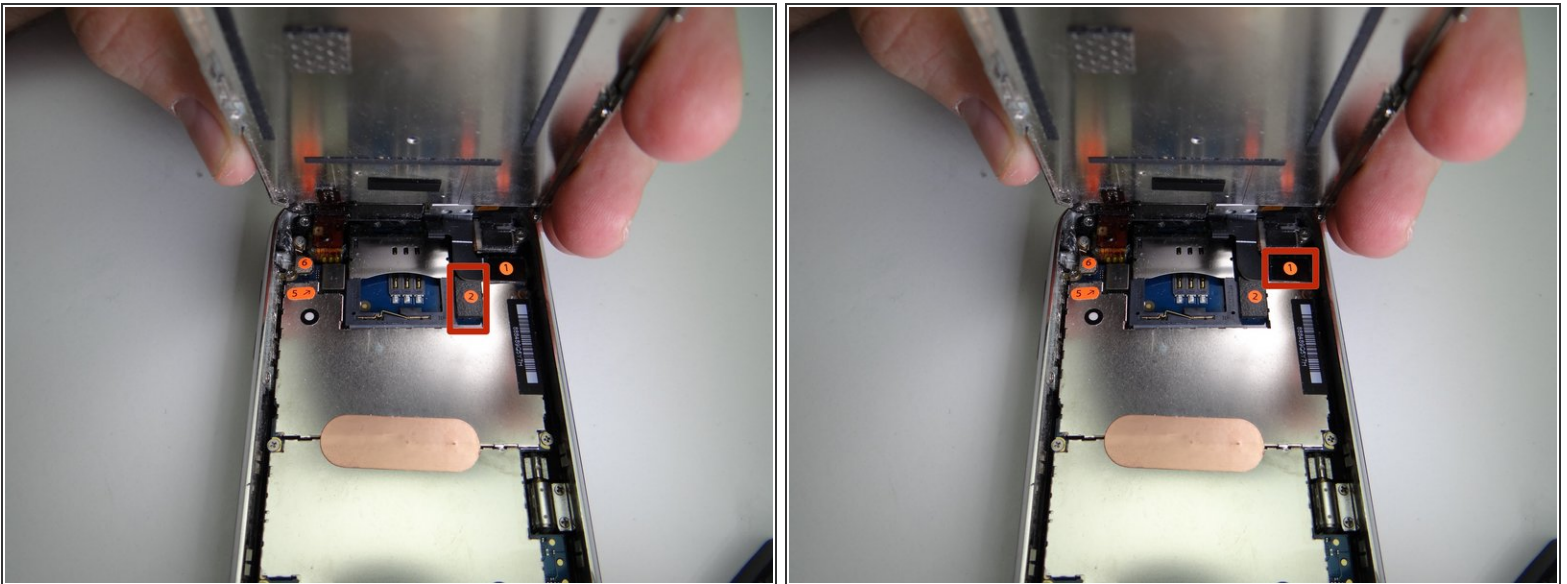
- Picture 1: Replace two 1.7 mm screws on right side of front panel from SLOT 3.
- Picture 2: Replace three 1.7 mm Phillips screws from SLOT 3.
- Picture 3: Replace the 1.6 mm Phillips screw on bracket on the back of the screen from SLOT 2.

Step 13 — Replacement 1 - Front Panel



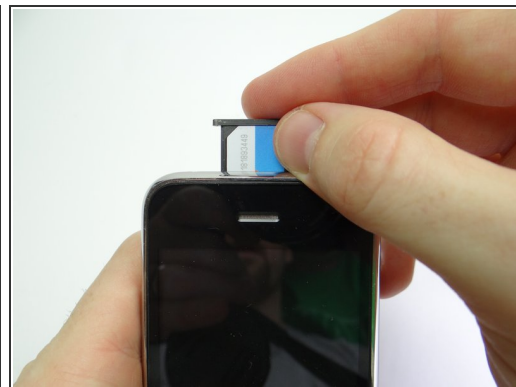
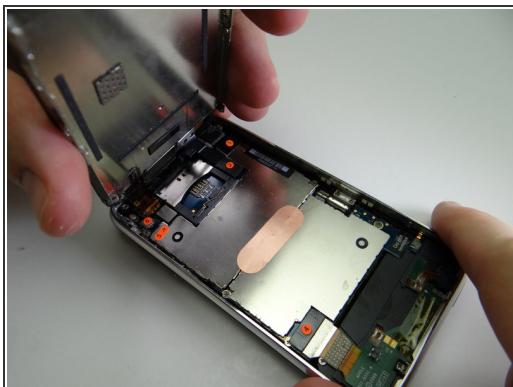
- Picture 1: Reattach front panel to rear case:
- Picture 2: Guide cable '3' into the ZIF connector.
- Picture 3: Use the blue pry tool to sweep down black swing bar to close ZIF connector.

Step 14



- Use your finger to reconnect cable '2' then cable '1'.

Step 15



- Picture 1: Fold the front panel into the rear case.
- Picture 2: From SLOT 1, replace two Phillips #00 screws.
- Picture 3: Replace SIM card and tray from COMPARTMENT A.

Step 16



- Power up and test the device.