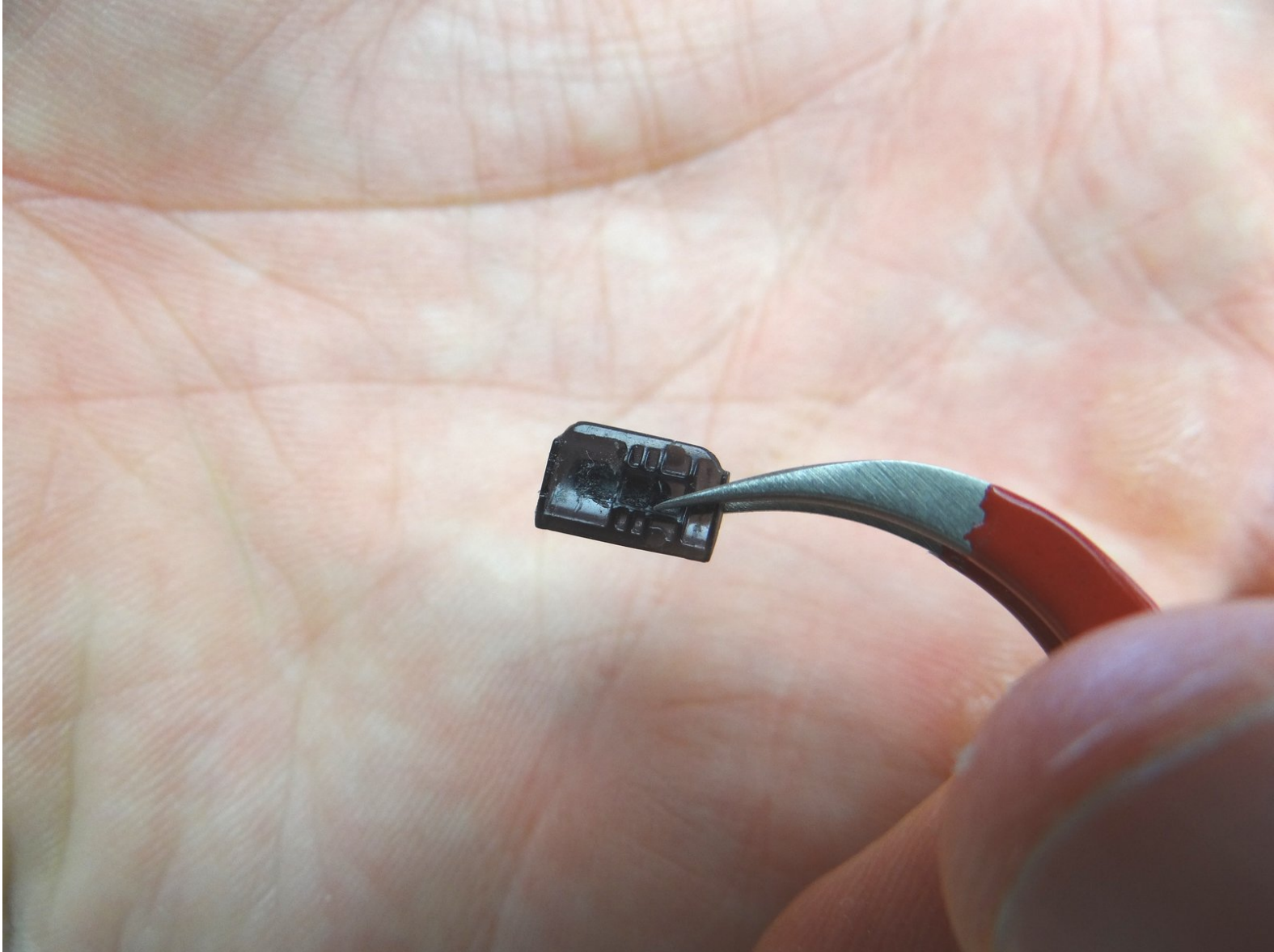


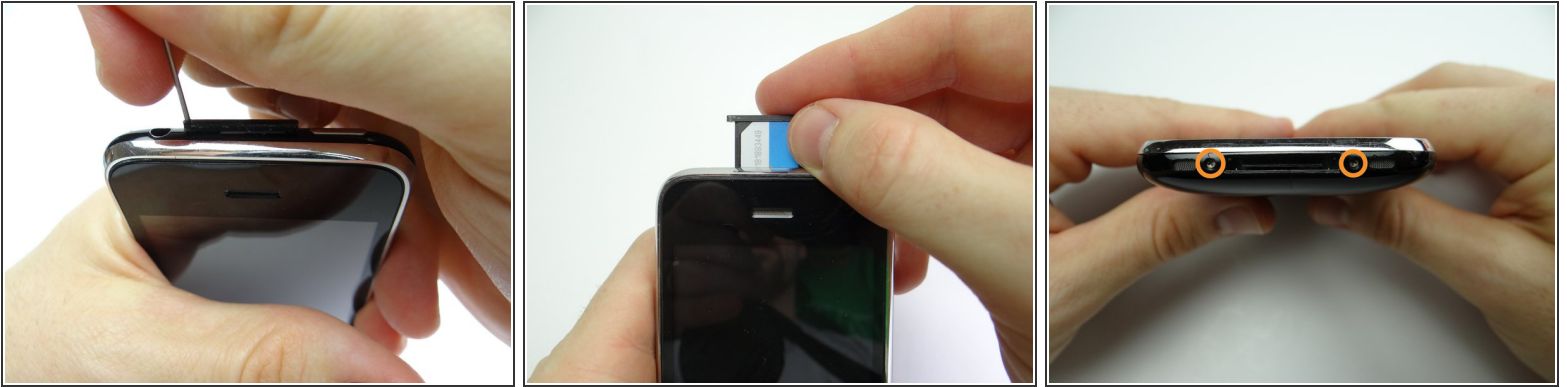
CELLPHONESANDBOX

Manual 07 - Mute Switch

Written By: James Linder

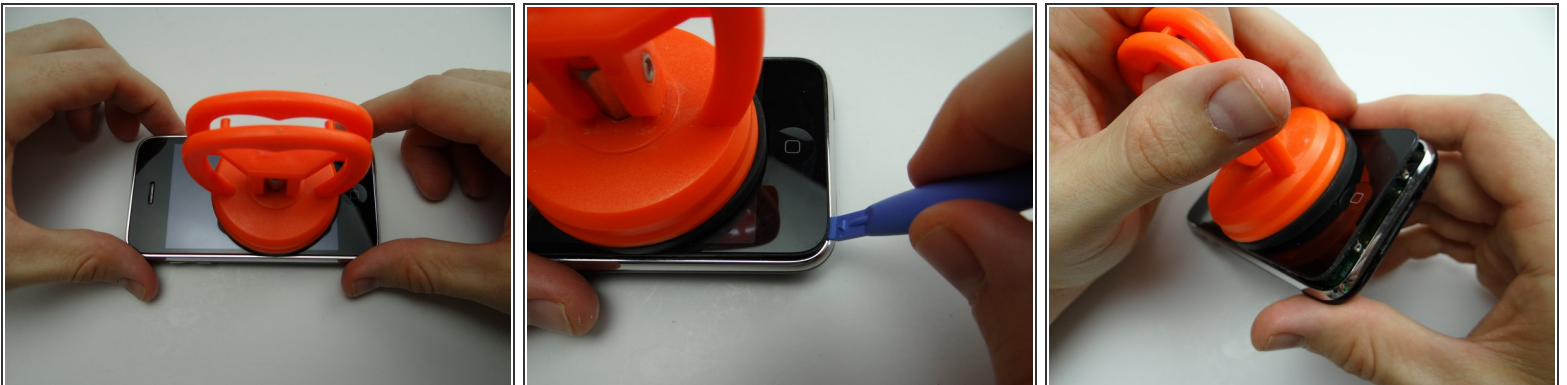


Step 1 — Removal 1 - Front Panel



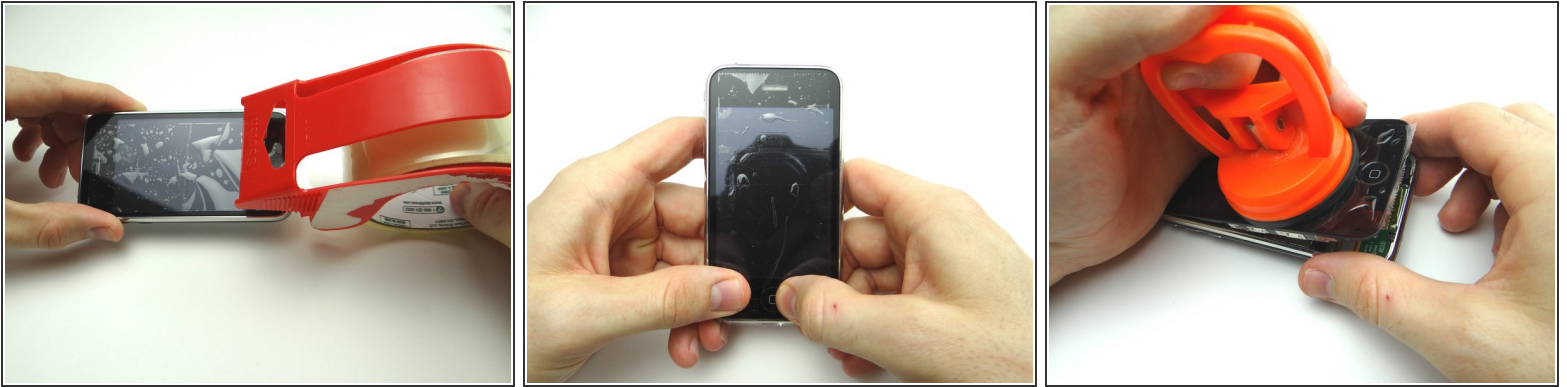
- Remove the SIM Card Tray and SIM Card. Place in COMPARTMENT A
- Remove two Phillips #00 screws and place in SLOT 1.

Step 2



- Picture 1: Place the suction cup on the screen just above the home button.
- Picture 2: Pull the Front Panel up just enough to wedge the Blue Pry Tool in between the front panel and rear case.
- Picture 3: Pry up just enough to grab the screen with your fingers. Remove the suction cup.

Step 3



- Picture 1: If you're replacing a cracked display, put a strip of packing tape across the screen.
 - Picture 2: Seal the tape over the home button to ensure it comes up with the screen.
 - Picture 3: Pry up just enough to grab the screen with your fingers. Remove the suction cup.
- i** If the screen still won't open, there's still another option for opening it in the next step.

Step 4



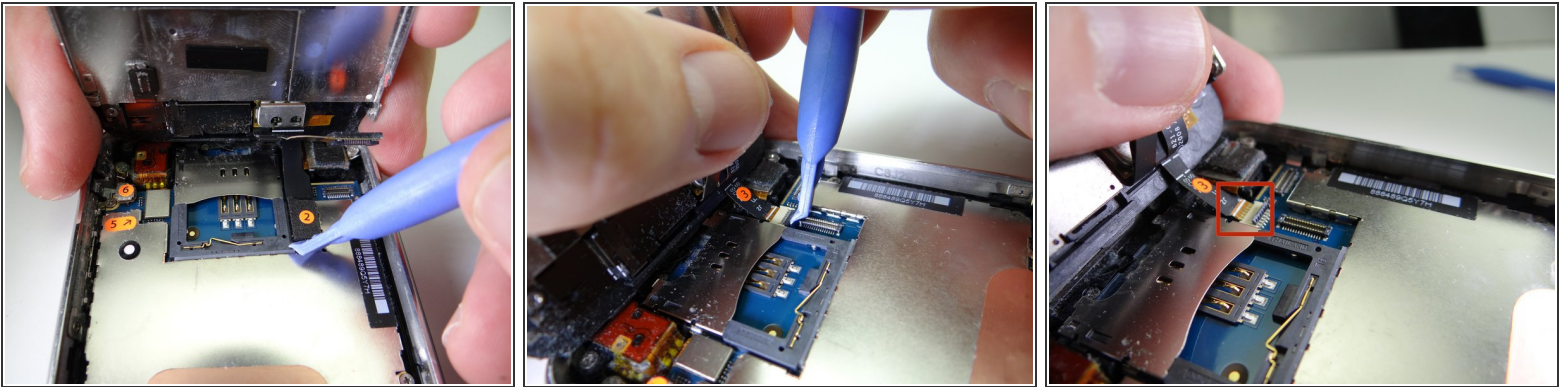
- If you're still unable to open the iPhone, use an iSesamo tool as a last resort:
- Picture 1: Wedge the iSesamo along the bottom edge of the iPhone near the corner.
- Picture 2: Pry up just enough to insert the blue pry tool.
- Picture 3: Use the blue pry tool to continue prying up the screen.

Step 5



- Pictures 1 & 2: Carefully continue pulling up the front panel until it reaches a 45° angle.
- Picture 3: While holding the front panel at a 45° angle, wedge spudger under cable '1' and rotate counter-clockwise until cable head is free.

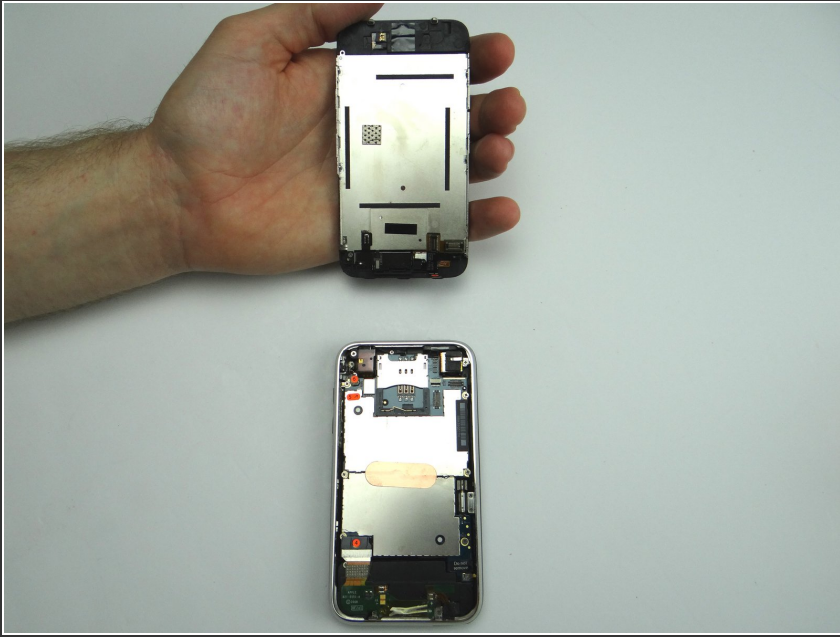
Step 6



- Picture 1: Use blue pry tool to lift cable 2 from its socket. You can now open the phone to a 90° angle.
- Pictures 2 & 3: Use the blue pry tool to flip the ZIF connector into the upright 'open' position to release the ribbon cable marked '3'.
- Use your thumb to gently guide the ribbon cable out of the ZIF connector.

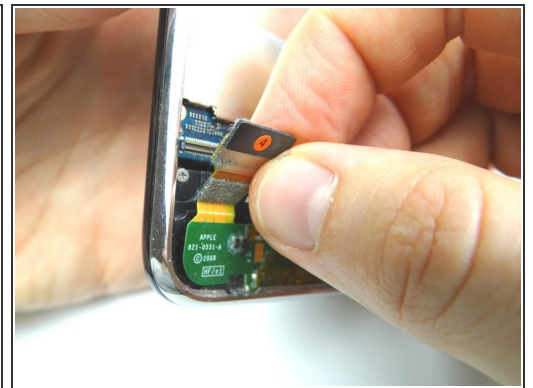
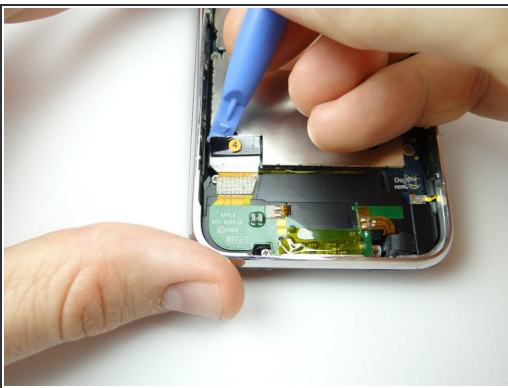
⚠ Cable '3' should come out with very little pressure. Double-check the ZIF connector latch if you feel tension.

Step 7



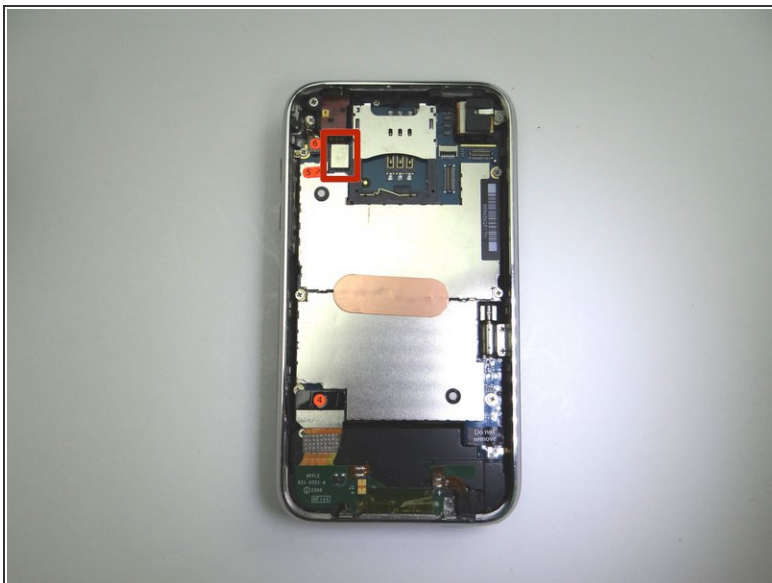
- Separate the front panel from the rear case.
- Place front and rear panels in ZONES I & II.

Step 8 — Disconnect cable '4':



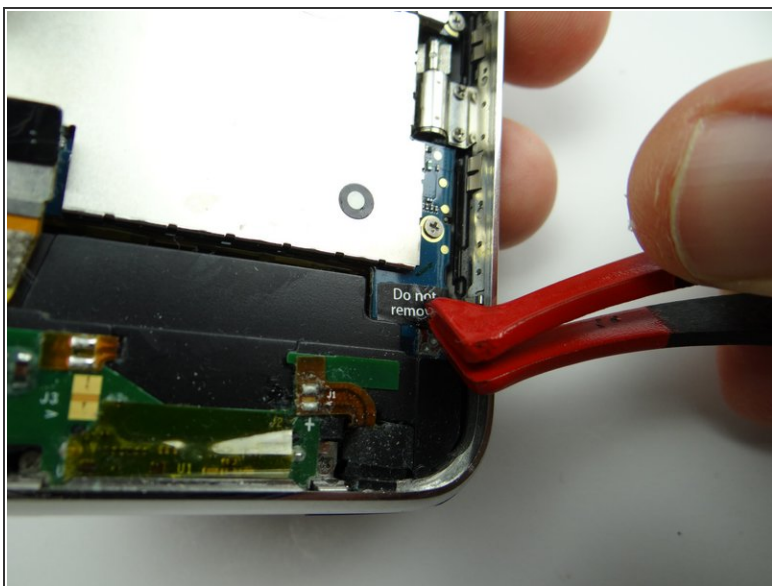
- Picture 1: Use the blue pry tool to pull up foam piece covering cable 4 connector.
- Picture 2: Pry up cable 4 connector with the blue pry tool.
- Picture 3: Squeeze foam back onto cable connector.

Step 9



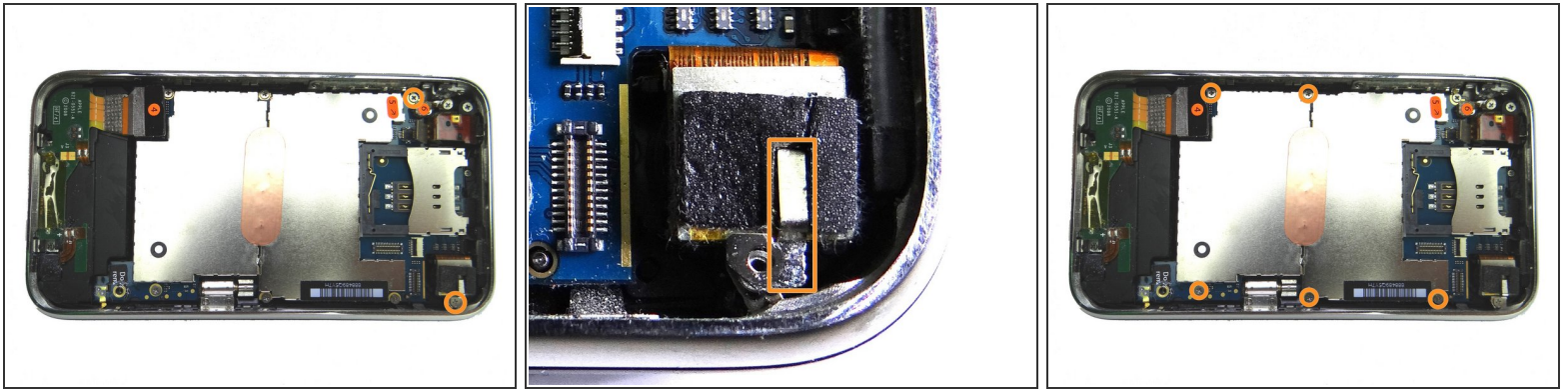
- Use blue pry tool to disconnect cables 5 & 6.

Step 10



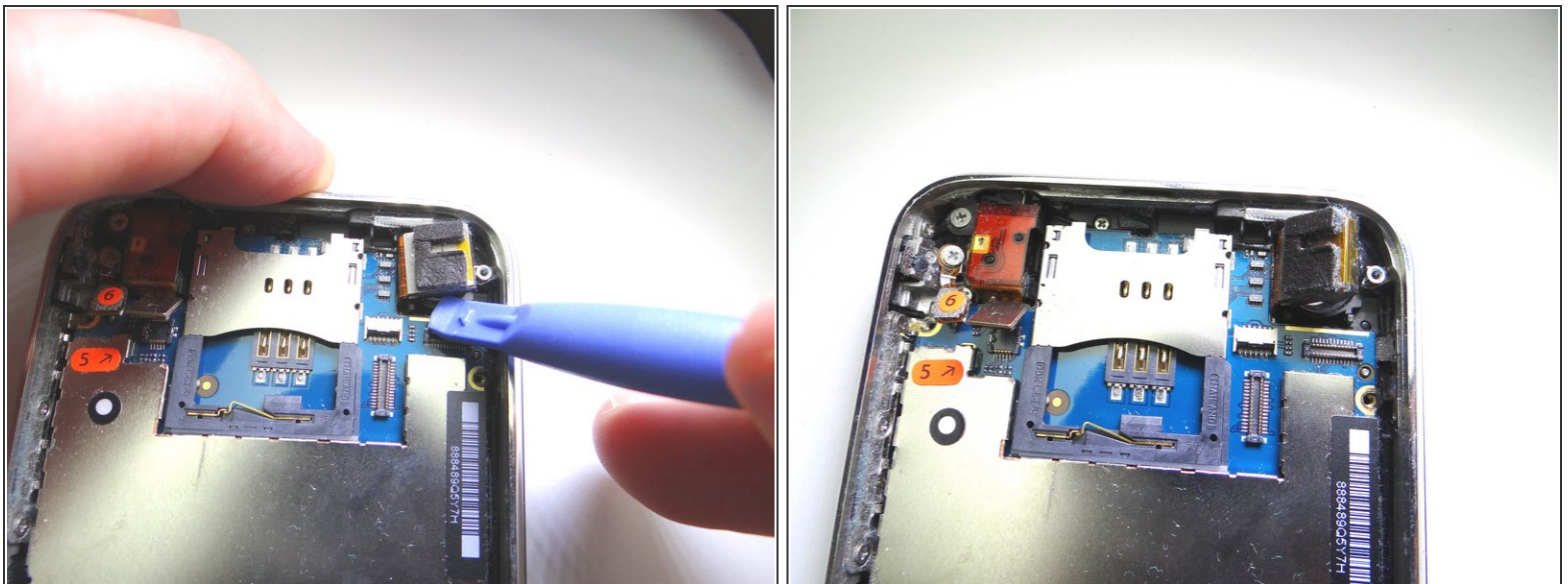
- Use plastic tweezers to peel up 'Do not remove' sticker.
- Remove 3 mm Phillips screw hidden by the sticker. Place in SLOT 4.

Step 11



- Picture 1: Remove two 2.3 mm Phillips screws. Place in SLOT 5.
- Picture 2: The camera screw holds down a metal bracket. Remove the bracket and place in SLOT 5.
- Picture 3: Remove five 2.3 mm Phillips screws. Place in SLOT 6.

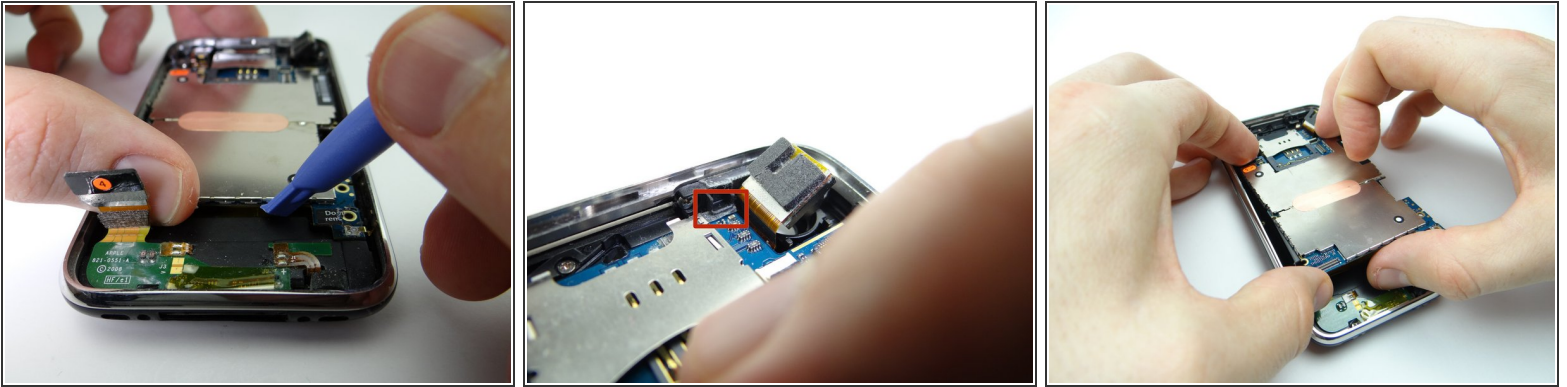
Step 12



- Pictures 1 & 2: Use blue pry tool to lift the camera slightly out of its socket, as shown in Picture 2.

⚠ DO NOT TRY TO REMOVE THE CAMERA. It's still attached to the underside of the logic board.

Step 13



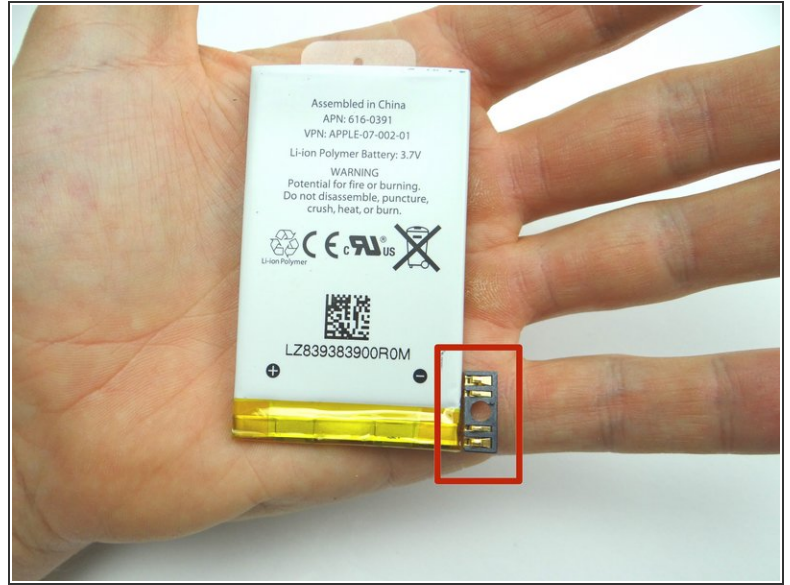
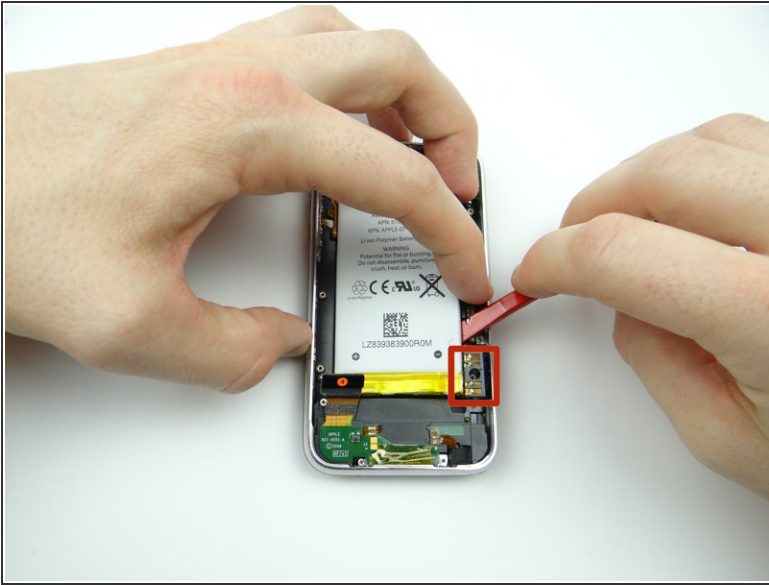
- Picture 1: Use blue pry tool to lift the logic board up from the rear case just enough to grab it with your fingers.
- Picture 2: Make sure you clear the ledge (red square) as you gently guide the logic board towards the bottom of the phone to remove it.
- Place logic board in ZONE III.

Step 14 — Removal 3.1.2 - Battery



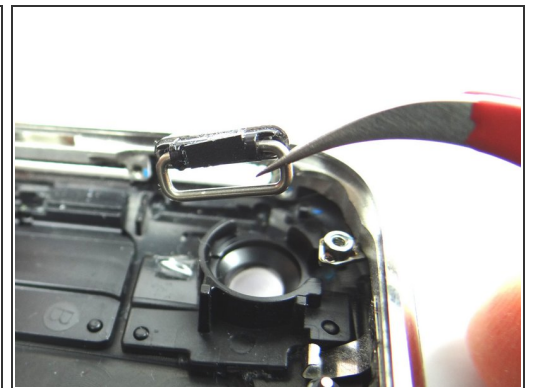
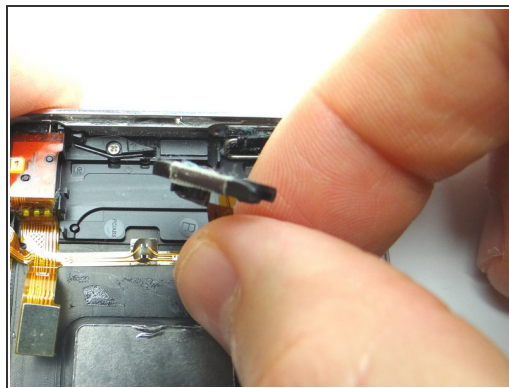
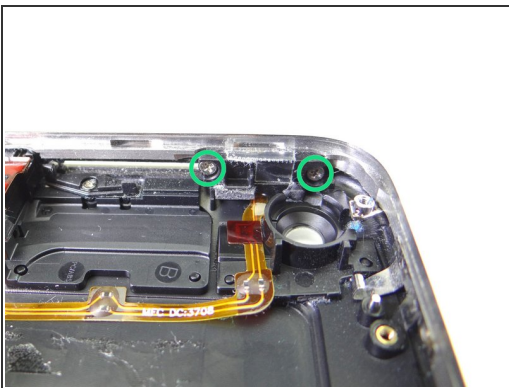
- Picture 1: Adhesive around the perimeter of the battery holds it to the rear case. Apply low-level heat (100° Celsius) to the underside of the rear case for 30 seconds to loosen the adhesive.
- Picture 2: Use the spudger to push through the adhesive under the battery.
- Picture 3: Work your way around the upper-right corner.

Step 15



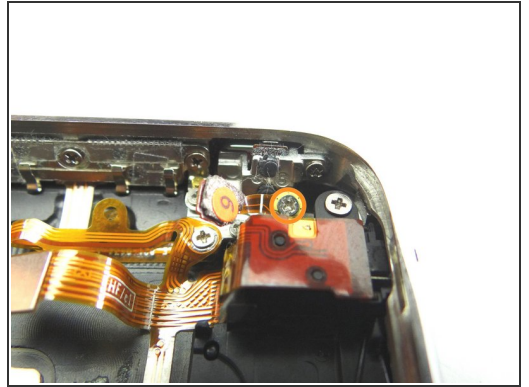
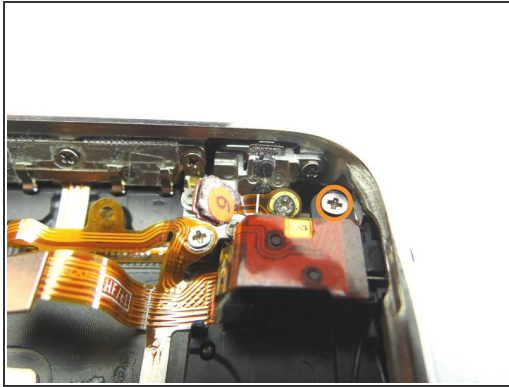
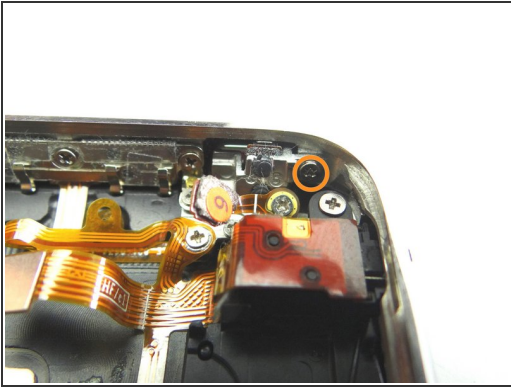
- Work your way down to the battery connector (red square).
- Work the battery up without warping the battery or damaging the connector.

Step 16 — Removal 3.2.1 - Power Button



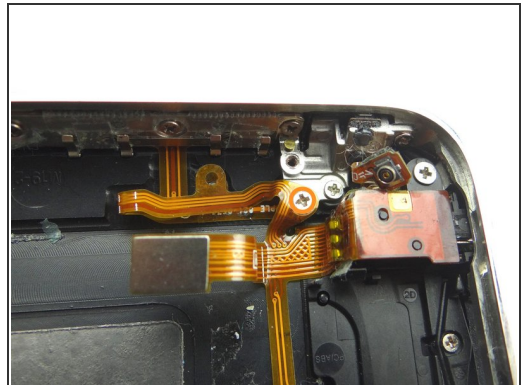
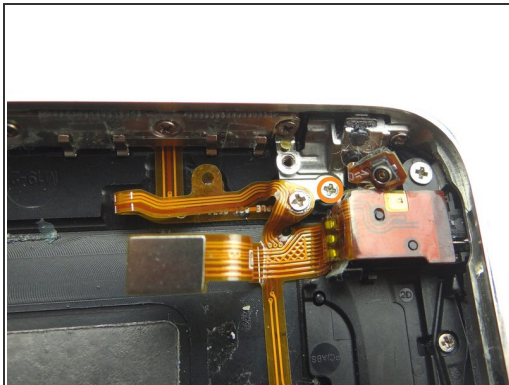
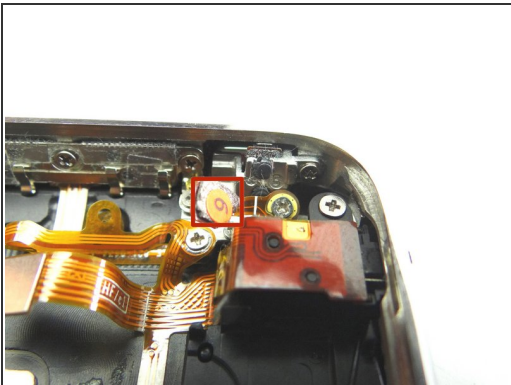
- Picture 1: Remove two 1.9 mm Phillips screws. Place in COMPARTMENT C.
- Picture 2: Peel power button cable away just enough to access the power button.
- Picture 3: Remove power button with curved tip tweezers. Place with screws in COMPARTMENT C.

Step 17 — Removal 3.2.2 - Mute Switch



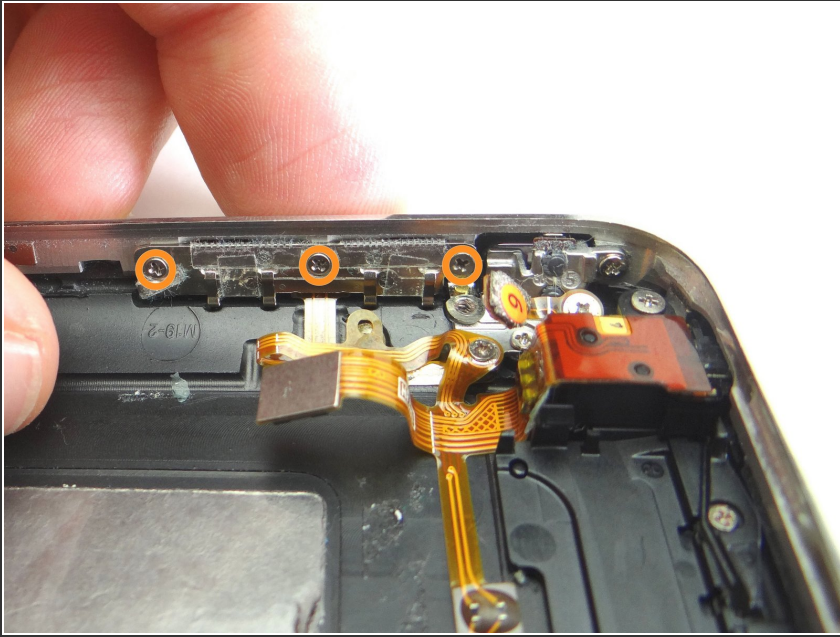
- Picture 1: Remove 1.9 mm Phillips screw. Place in SLOT 9.
- Picture 2: Remove 3.8 mm Phillips screw. Place in SLOT 10.
- Picture 3: Remove 1.8 mm Phillips screw. Place in SLOT 11.

Step 18



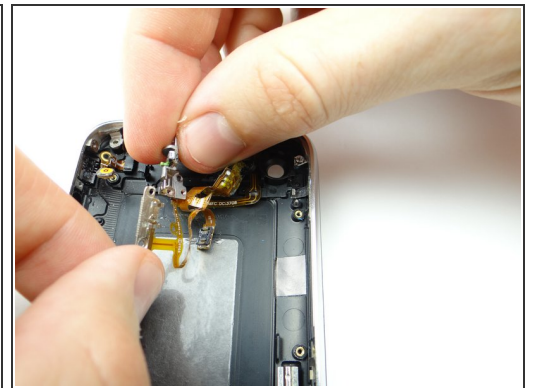
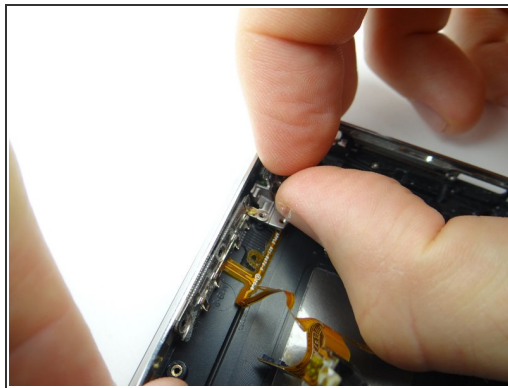
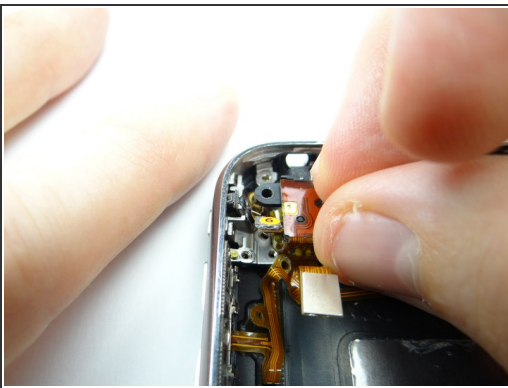
- Picture 1: There's a screw hidden underneath Cable 6:
- Picture 2: Remove 1.8 mm hidden screw. Place in SLOT 12.
- Picture 3: Remove 1.6 mm screw. Place in SLOT 13.

Step 19



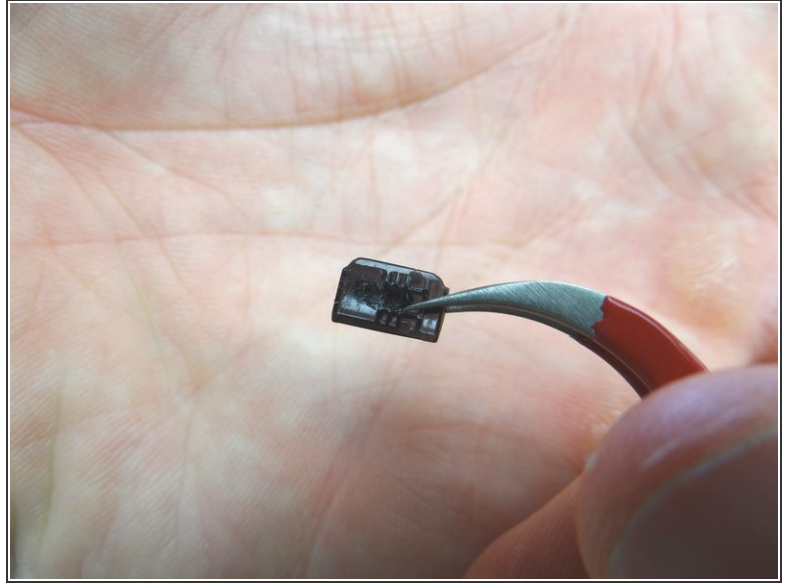
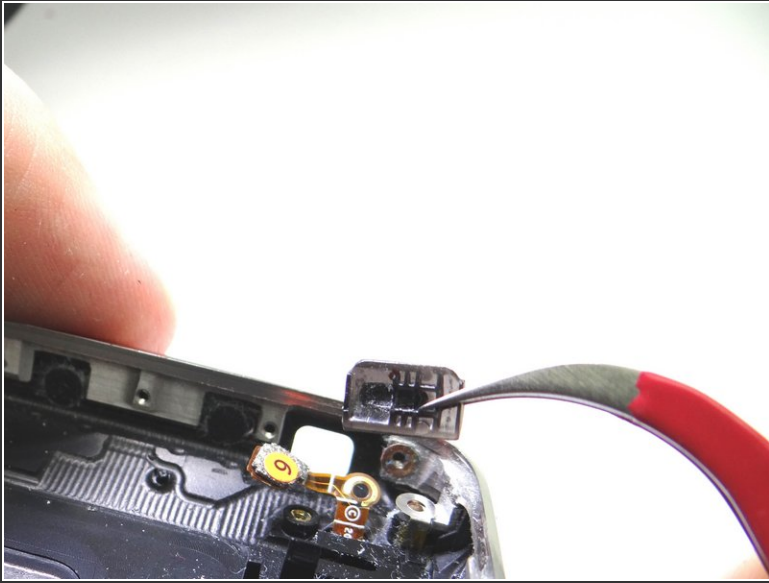
- Remove three 1.4 mm screws. Place in SLOT 14.

Step 20



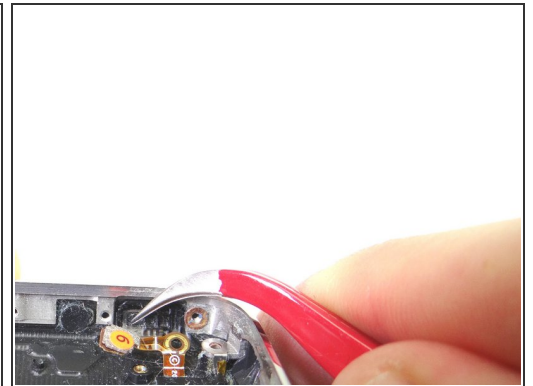
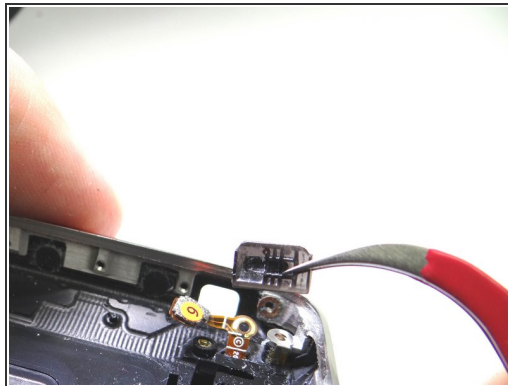
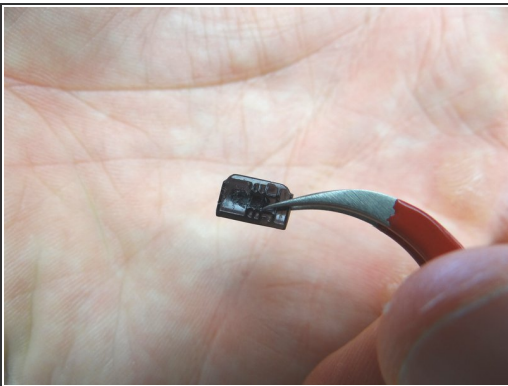
- Picture 1: Pull headphone jack away from its socket.
- Picture 2: Peel back mute switch gear.
- Picture 3: Peel the headphone jack, mute switch gear and volume buttons bracket right just enough to access the mute switch.

Step 21



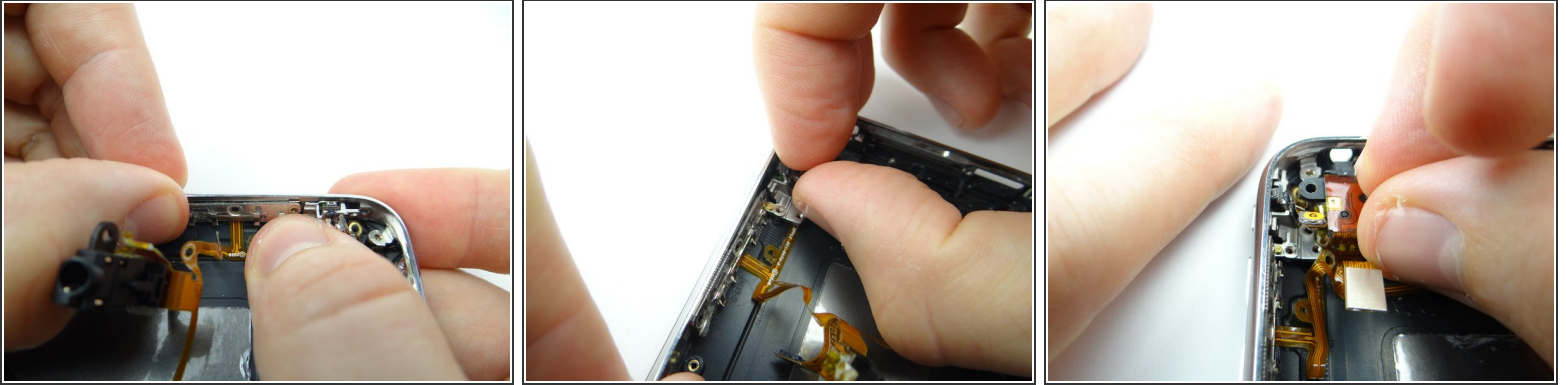
- Picture 1: Remove the mute switch with curved-tip tweezers.
- Picture 2: Place mute switch in COMPARTMENT D.

Step 22 — Replacement 3.2.2 - Mute Switch



- From COMPARTMENT D, use tweezers to replace the mute switch. The pictures show the correct orientation.

Step 23



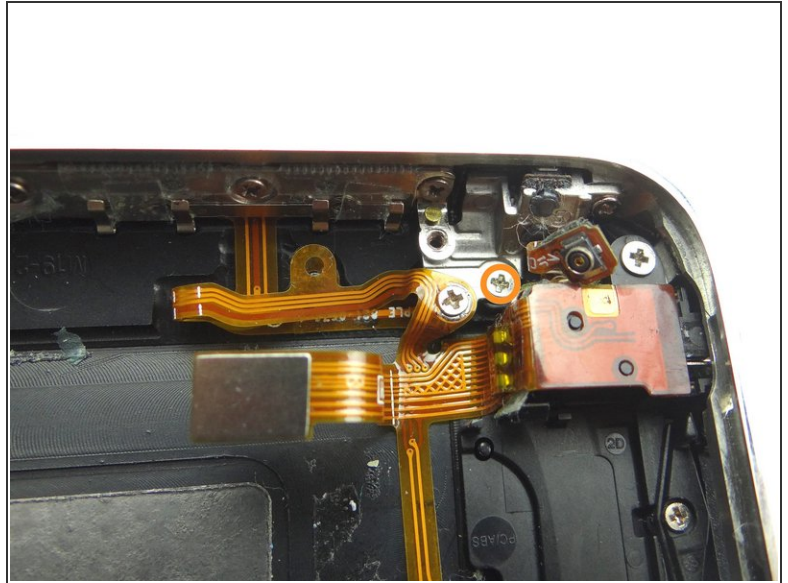
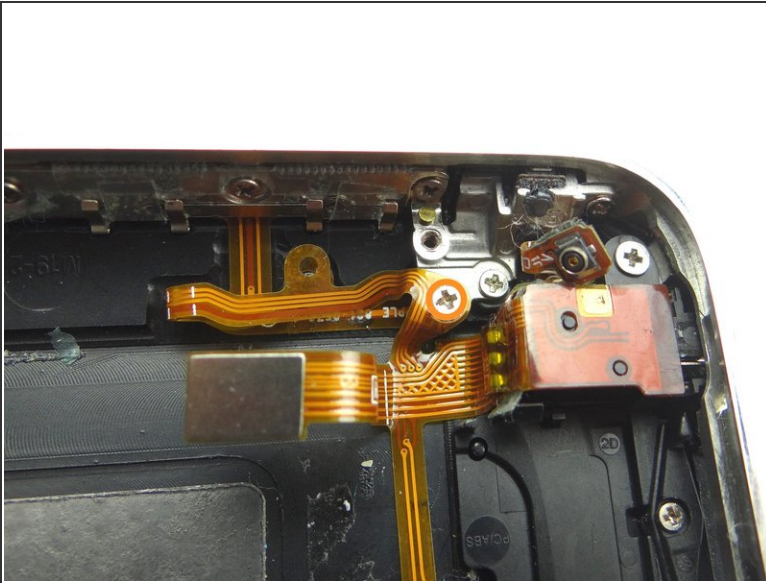
- Seat the volume bracket, mute bracket and headset jack.

Step 24



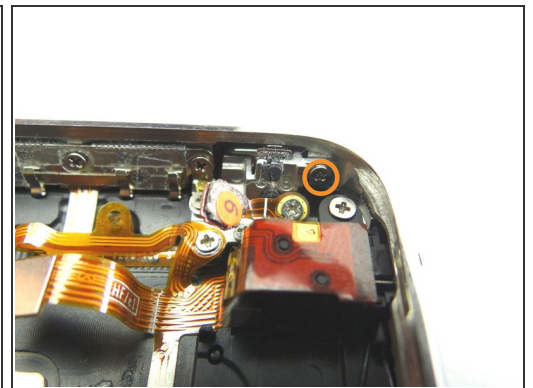
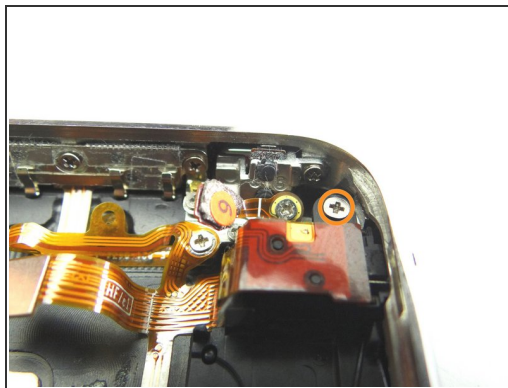
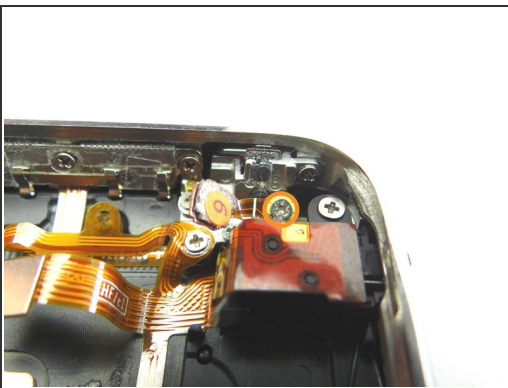
- From SLOT 14, replace three 1.4 mm screws.

Step 25



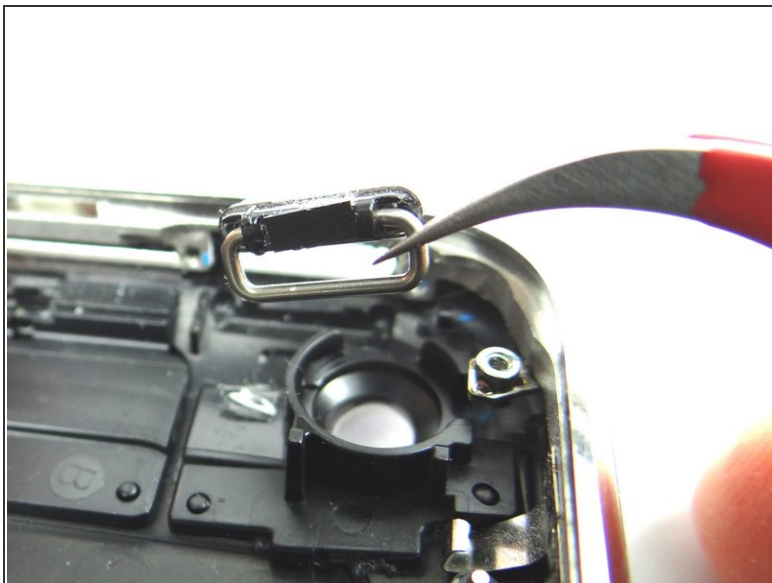
- Picture 1: From SLOT 13, replace 1.6 mm screw.
- Picture 2: From SLOT 12, replace 1.8 mm hidden screw.

Step 26



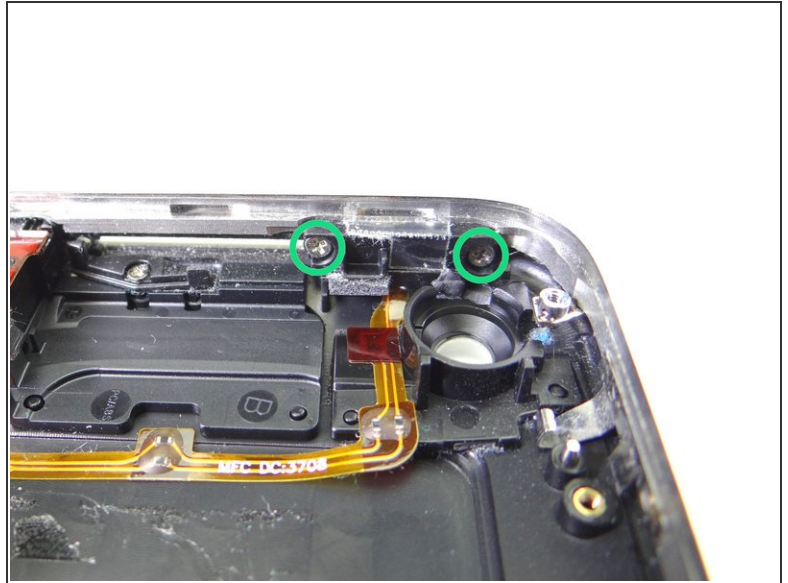
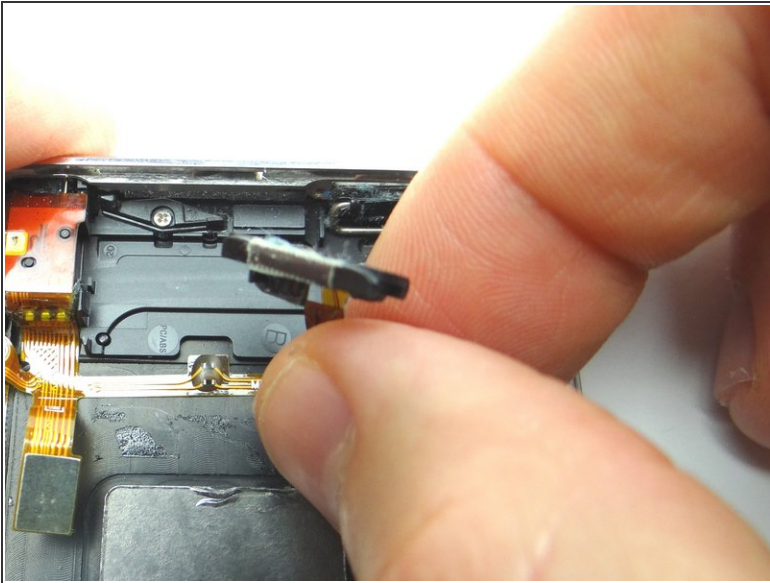
- Picture 1: From SLOT 11, replace one 1.8 mm screw.
- Picture 2: From SLOT 10, replace one 3.8 mm Phillips screw.
- Picture 3: From SLOT 9, replace one 1.9 mm Phillips screw.

Step 27 — Replacement 3.2.1 - Power Button



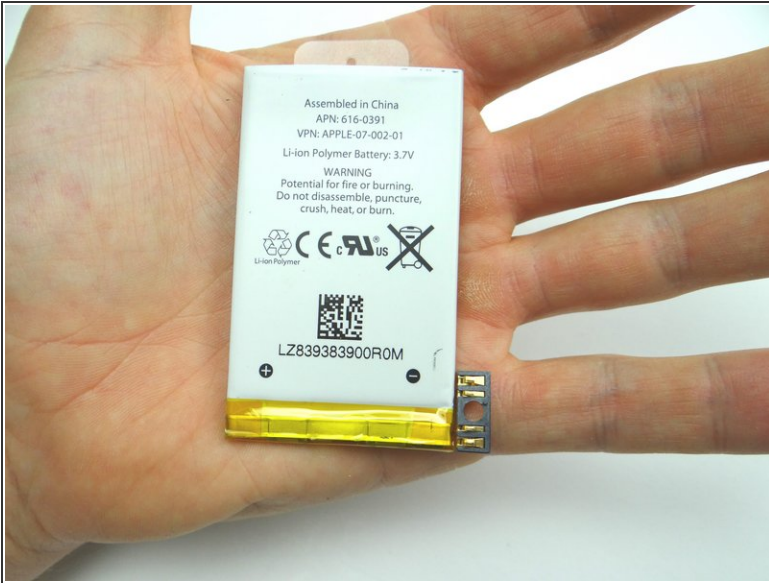
- From COMPARTMENT C, use curved-tip tweezers to place the power button.
- Push the power button into place. The pictures show the correct orientation.

Step 28



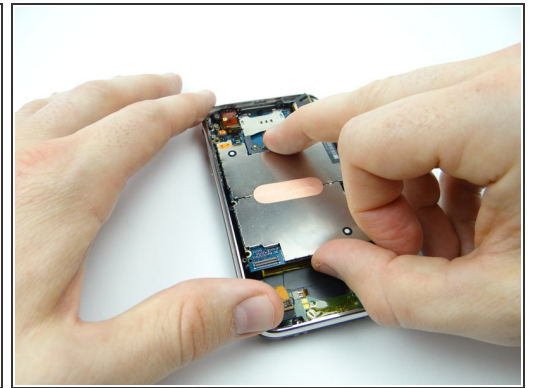
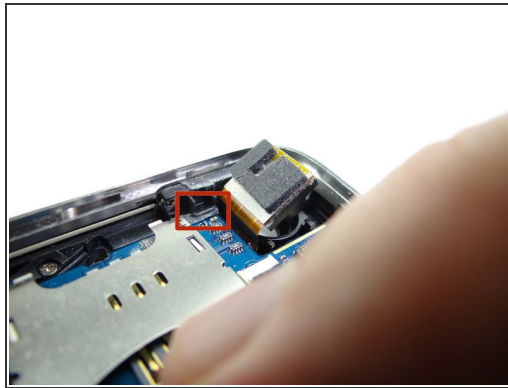
- Seat the power button cable and bracket.
 - FROM COMPARTMENT C, replace two 1.9 mm Phillips screws.
- i** The power button should have some play without feeling loose or tight: After tightening the screws, press the power button a few times. Loosen or tighten the screws a quarter turn as needed.

Step 29 — Replacement 3.1.2 - Battery



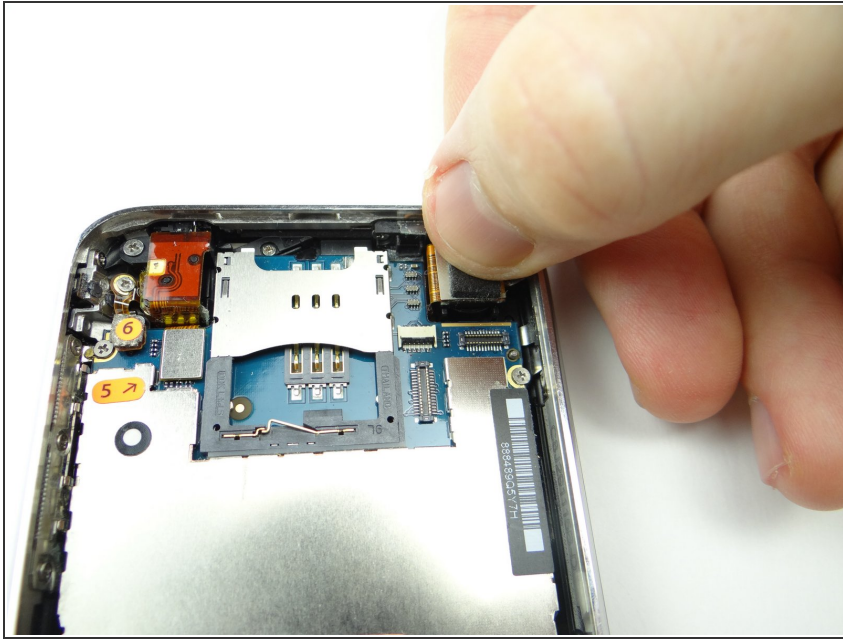
- Place the battery in the rear case: seat the contact pad first, then continue seating the battery.

Step 30 — Replacement 2.3 - Logic Board



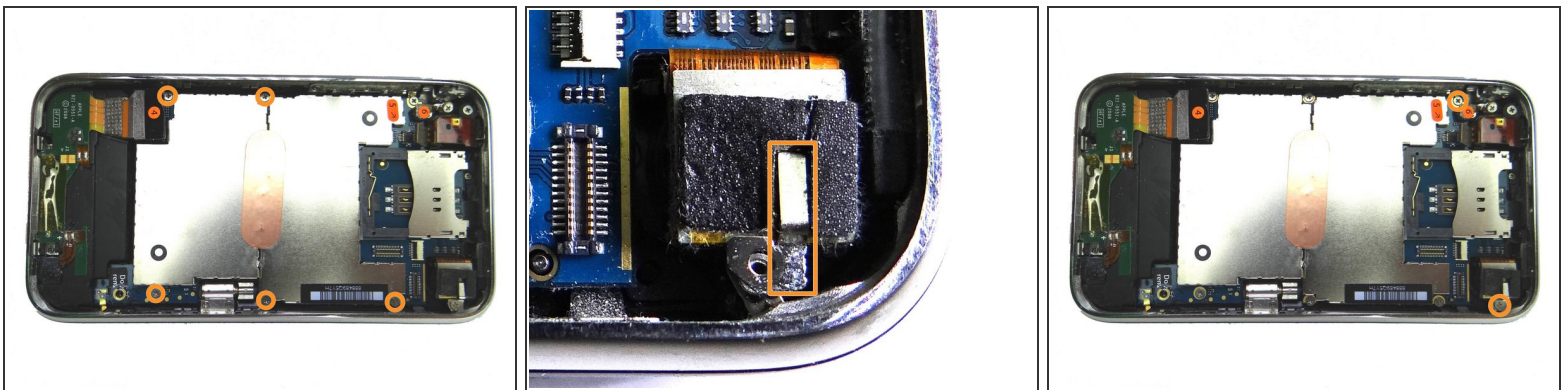
- Pictures 1 & 2: From ZONE III, seat top of logic board first. Make sure the logic board is situated below the ledge shown in the red square.
- Picture 3: Hold the charging port cable out of the way while seating the bottom of the logic board.

Step 31



- Seat the camera.

Step 32



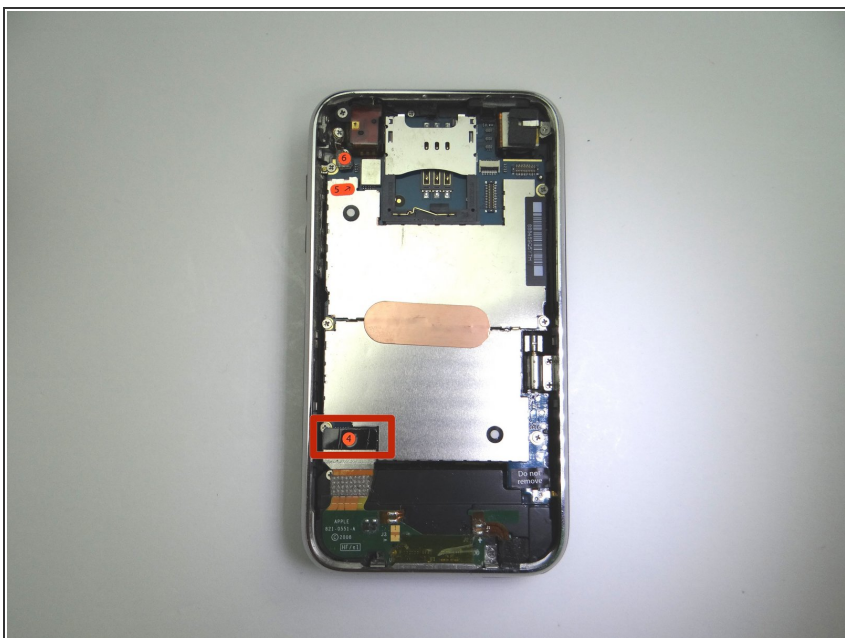
- Picture 1: From SLOT 6, replace five 2.3 mm screws.
- Picture 2: From SLOT 5, seat metal camera bracket.
- Picture 3: From SLOT 5, replace two 2.3 mm screws.

Step 33



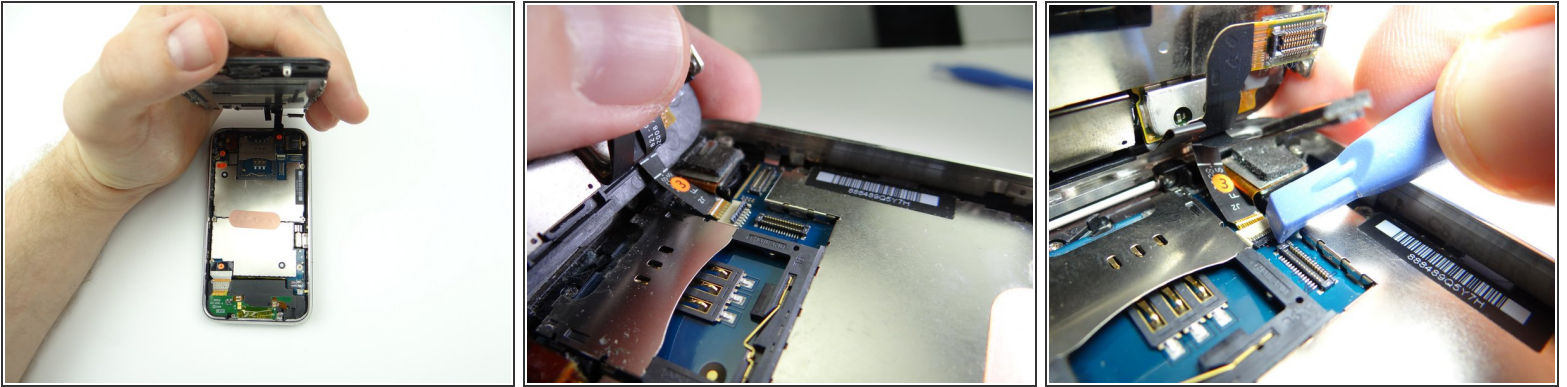
- Picture 1: From SLOT 4, replace the 3 mm 'Do not remove' screw.
- Picture 2: Use your finger to seat cable #6.
- Picture 3: Use your finger to seat cable #5.

Step 34



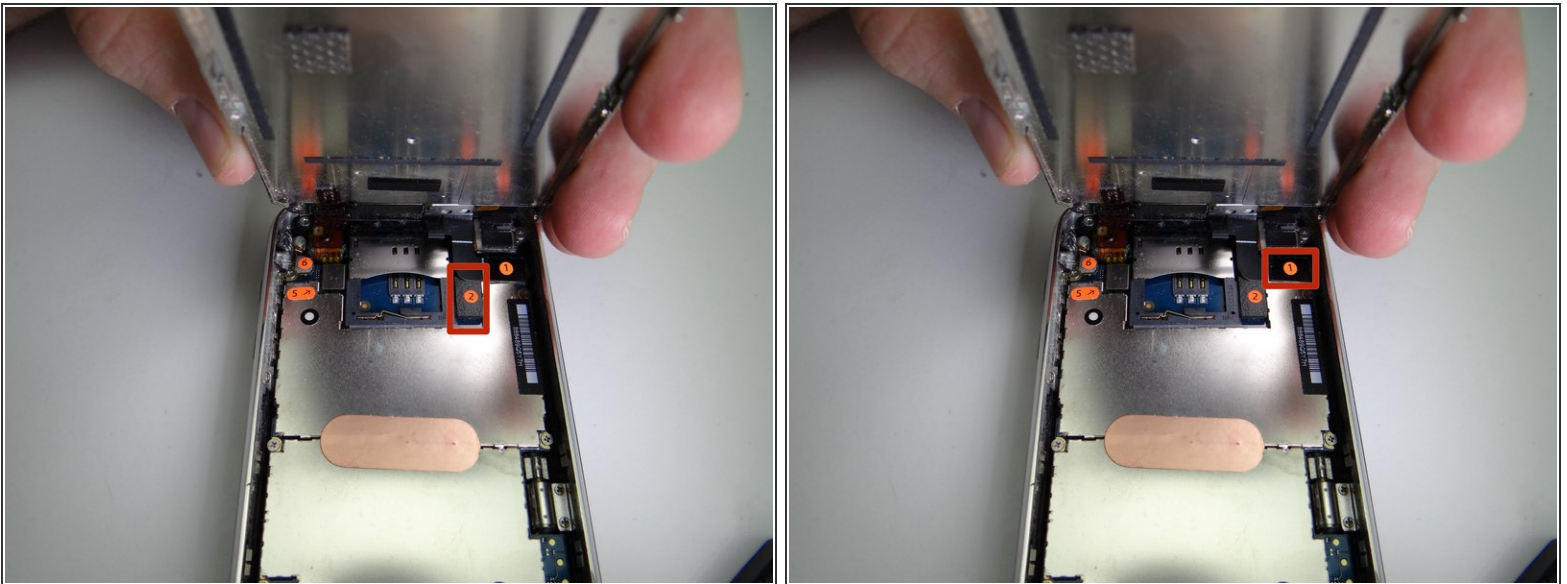
- Use your finger to seat cable #4.

Step 35 — Replacement 1 - Front Panel



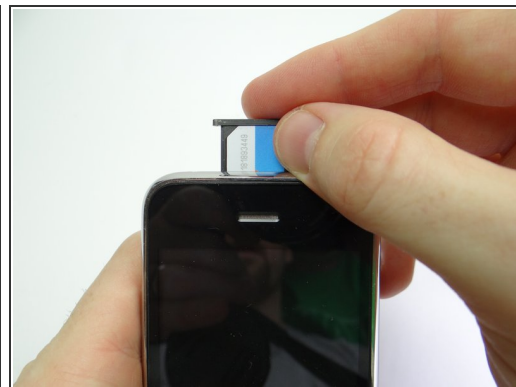
- Picture 1: Reattach front panel to rear case:
- Picture 2: Guide cable '3' into the ZIF connector.
- Picture 3: Use the blue pry tool to sweep down black swing bar to close ZIF connector.

Step 36



- Use your finger to reconnect cable '2' then cable '1'.

Step 37



- Picture 1: Fold the front panel into the rear case.
- Picture 2: From SLOT 1, replace two Phillips #00 screws.
- Picture 3: Replace SIM card and tray from COMPARTMENT A.

Step 38



- Power up and test the device.