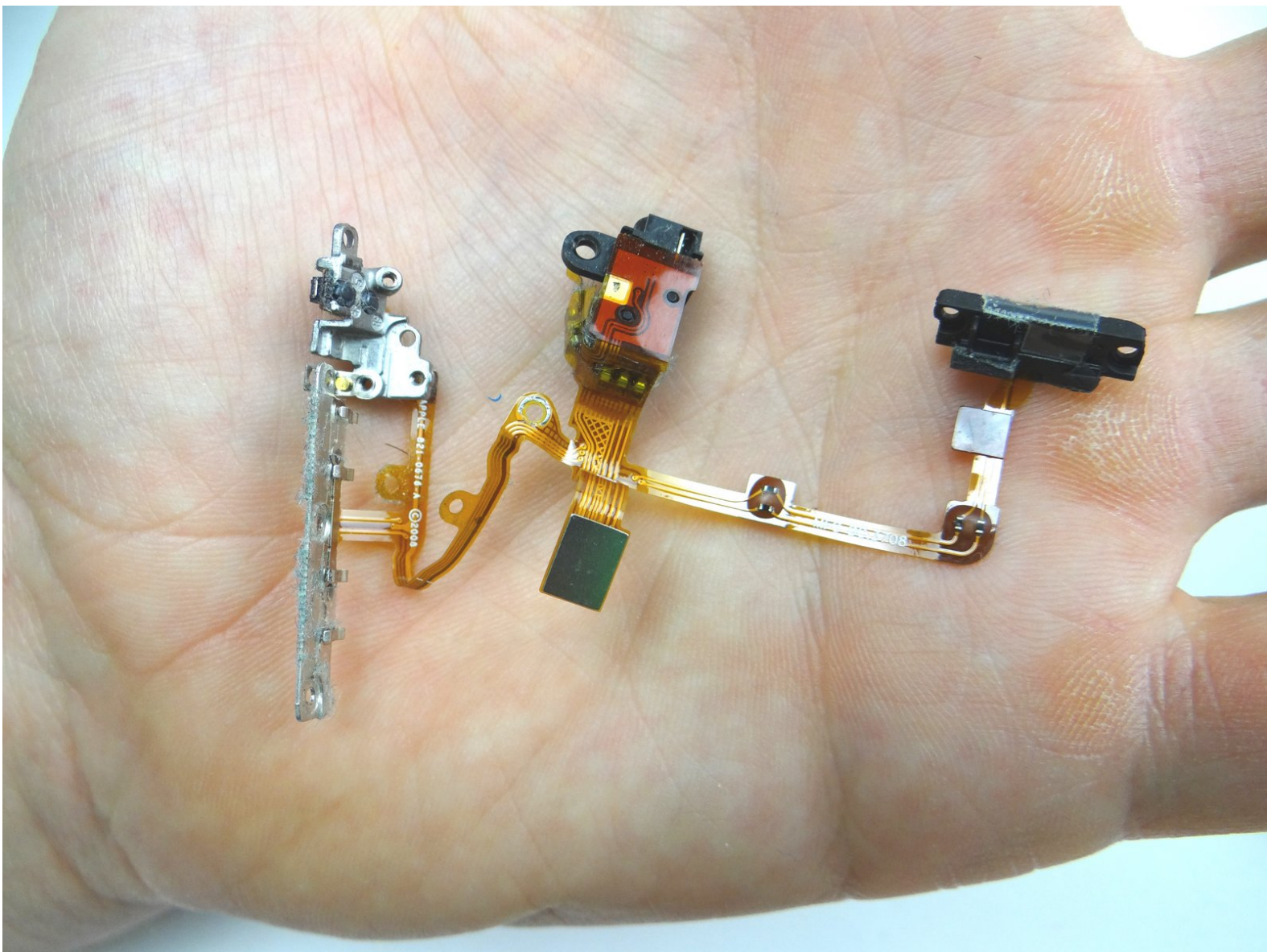


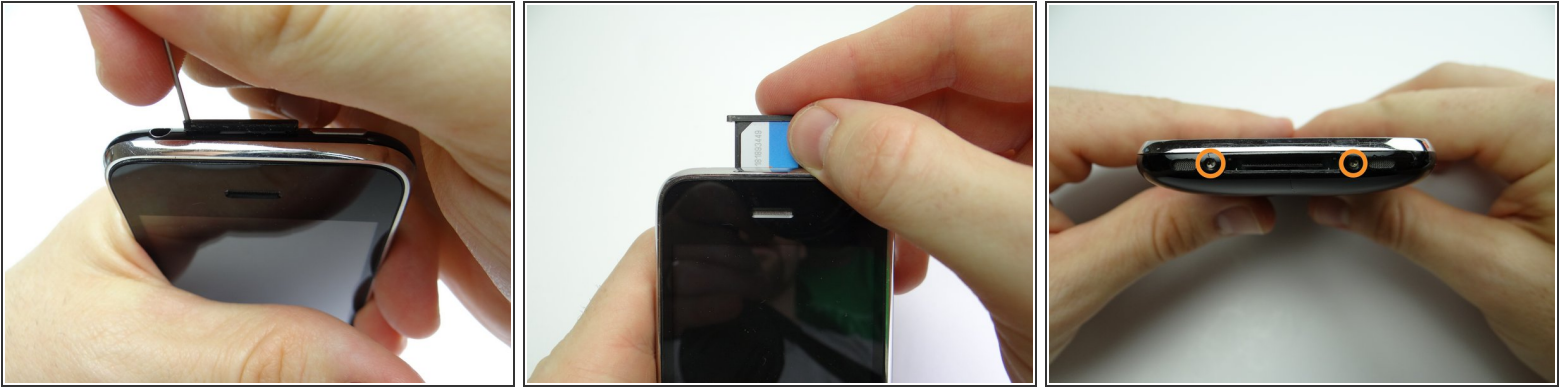
CELLPHONESANDBOX

Manual 08 - Headset Jack / Power & Volume Button Contacts / Mute Switch Gear

Written By: James Linder

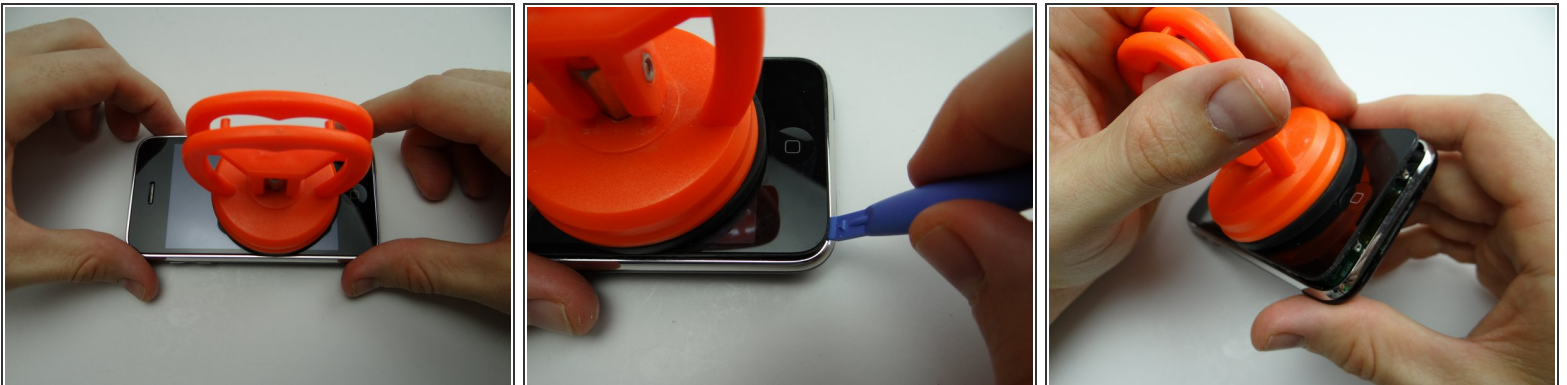


Step 1 — Removal 1 - Front Panel



- Remove the SIM Card Tray and SIM Card. Place in COMPARTMENT A
- Remove two Phillips #00 screws and place in SLOT 1.

Step 2



- Picture 1: Place the suction cup on the screen just above the home button.
- Picture 2: Pull the Front Panel up just enough to wedge the Blue Pry Tool in between the front panel and rear case.
- Picture 3: Pry up just enough to grab the screen with your fingers. Remove the suction cup.

Step 3



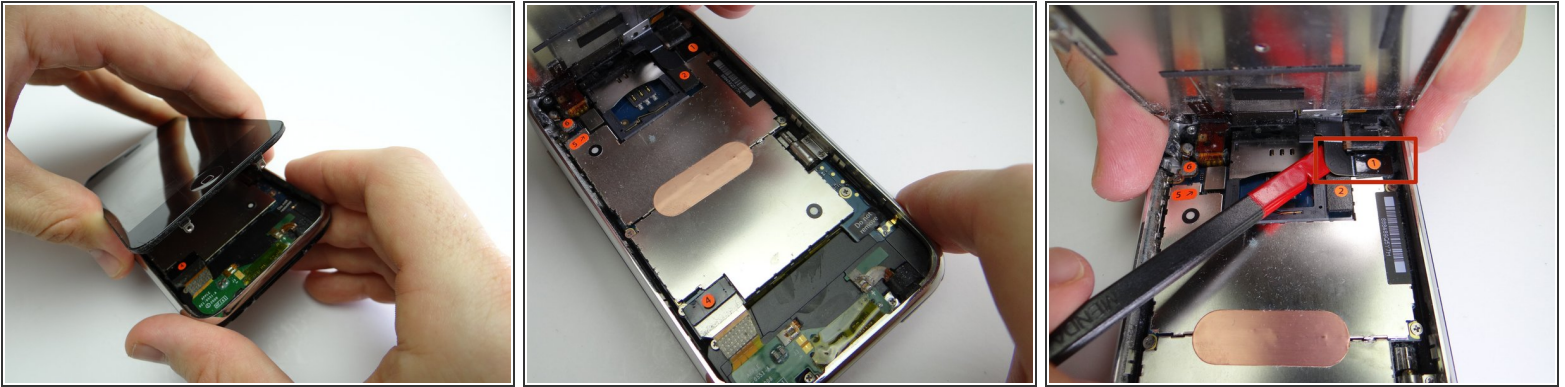
- Picture 1: If you're replacing a cracked display, put a strip of packing tape across the screen.
 - Picture 2: Seal the tape over the home button to ensure it comes up with the screen.
 - Picture 3: Pry up just enough to grab the screen with your fingers. Remove the suction cup.
- i** If the screen still won't open, there's still another option for opening it in the next step.

Step 4



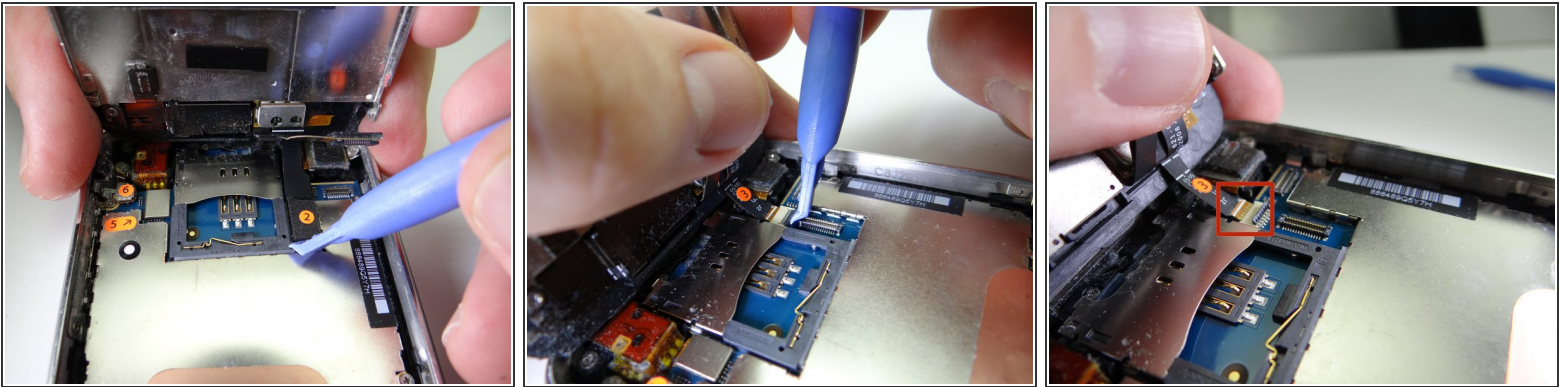
- If you're still unable to open the iPhone, use an iSesamo tool as a last resort:
- Picture 1: Wedge the iSesamo along the bottom edge of the iPhone near the corner.
- Picture 2: Pry up just enough to insert the blue pry tool.
- Picture 3: Use the blue pry tool to continue prying up the screen.

Step 5



- Pictures 1 & 2: Carefully continue pulling up the front panel until it reaches a 45° angle.
- Picture 3: While holding the front panel at a 45° angle, wedge spudger under cable '1' and rotate counter-clockwise until cable head is free.

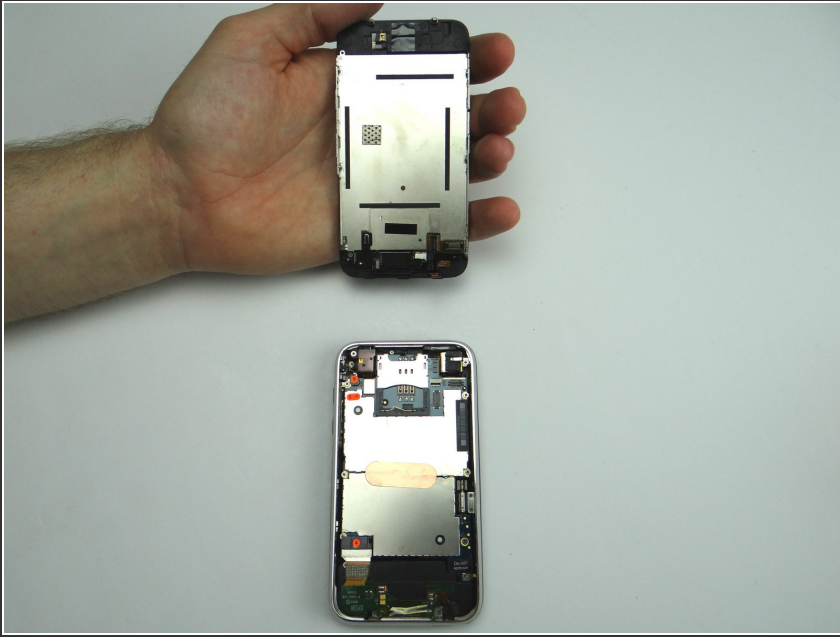
Step 6



- Picture 1: Use blue pry tool to lift cable 2 from its socket. You can now open the phone to a 90° angle.
- Pictures 2 & 3: Use the blue pry tool to flip the ZIF connector into the upright 'open' position to release the ribbon cable marked '3'.
- Use your thumb to gently guide the ribbon cable out of the ZIF connector.

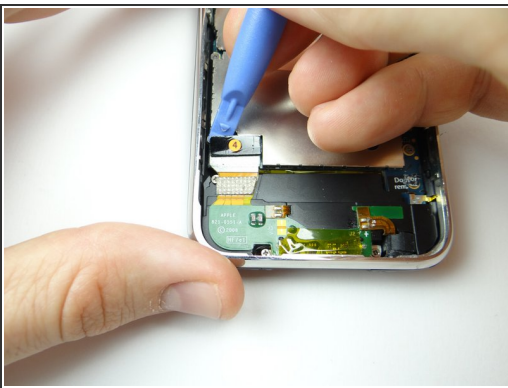
⚠ Cable '3' should come out with very little pressure. Double-check the ZIF connector latch if you feel tension.

Step 7



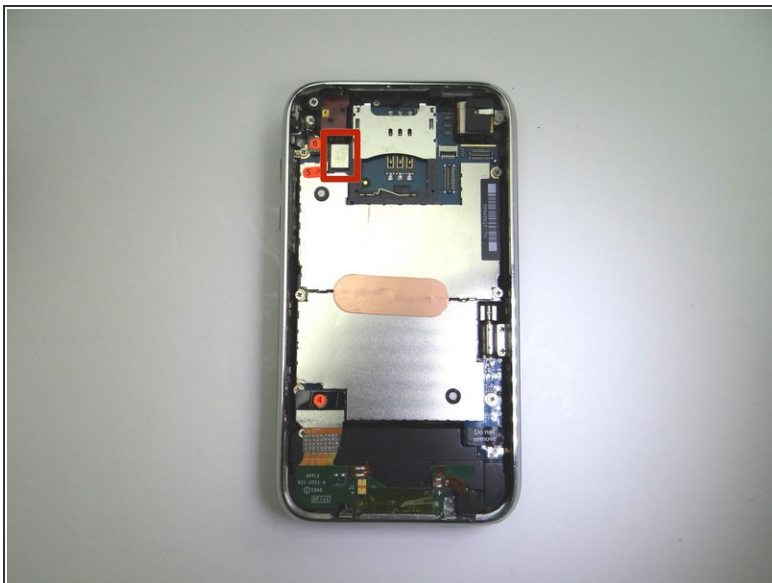
- Separate the front panel from the rear case.
- Place front and rear panels in ZONES I & II.

Step 8 — Disconnect cable '4':



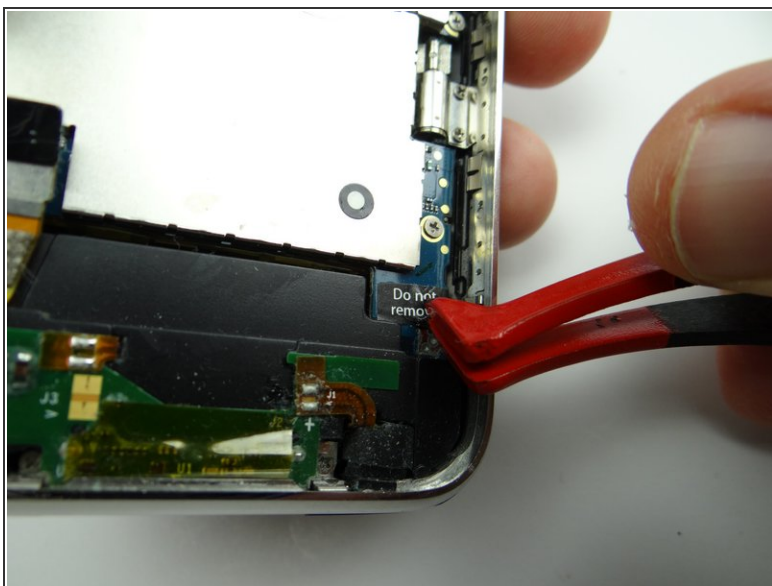
- Picture 1: Use the blue pry tool to pull up foam piece covering cable 4 connector.
- Picture 2: Pry up cable 4 connector with the blue pry tool.
- Picture 3: Squeeze foam back onto cable connector.

Step 9



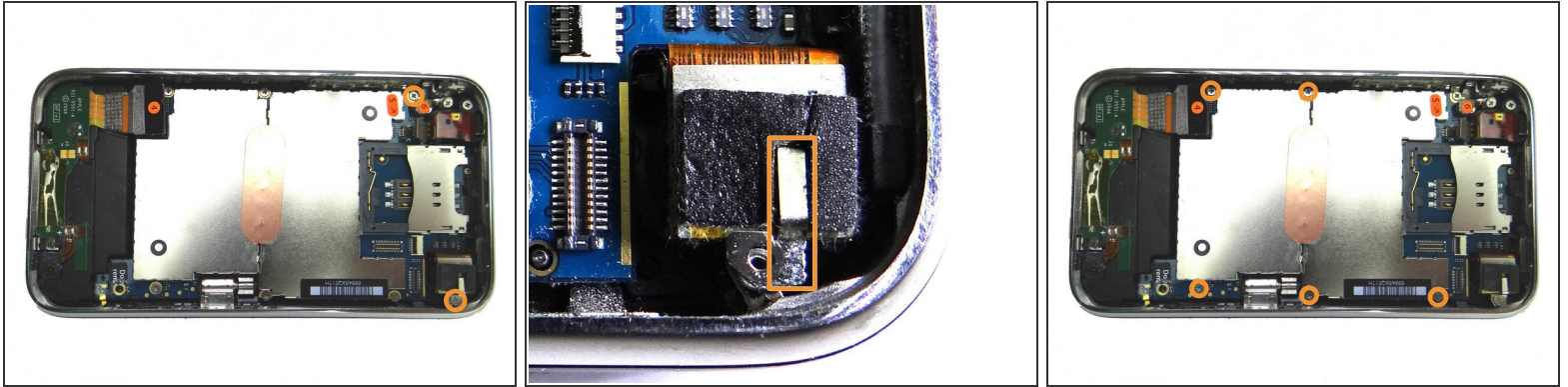
- Use blue pry tool to disconnect cables 5 & 6.

Step 10



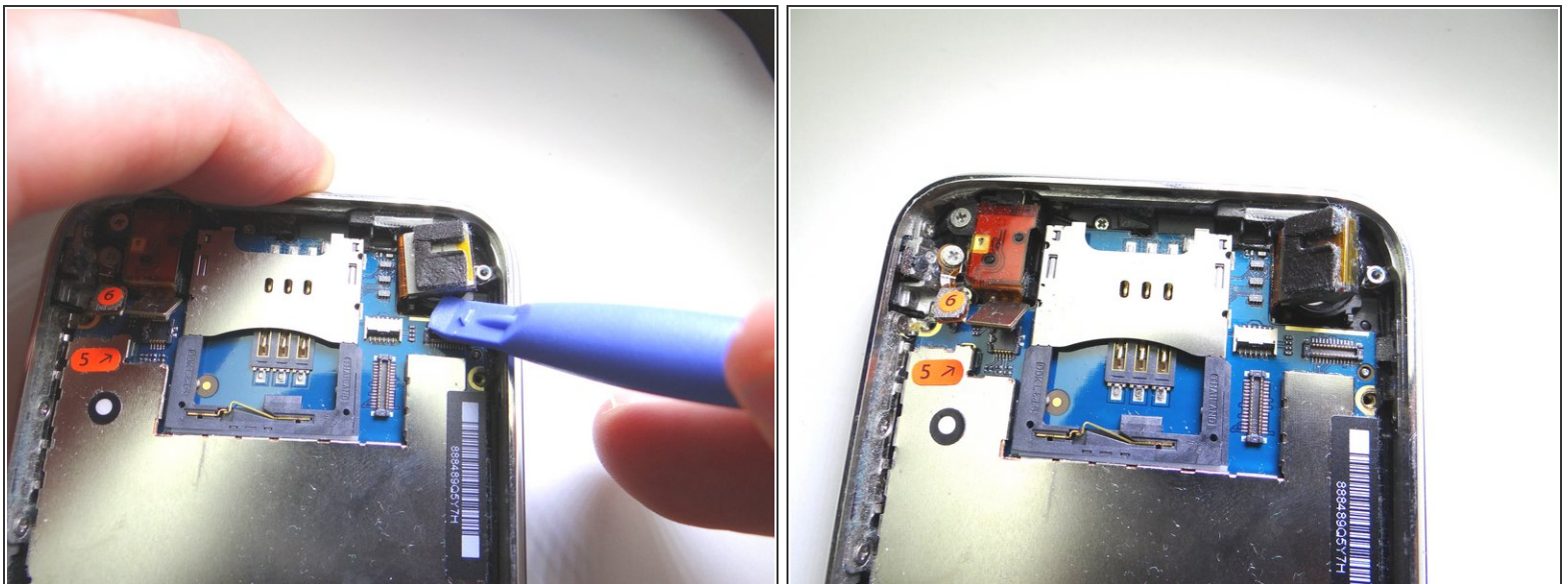
- Use plastic tweezers to peel up 'Do not remove' sticker.
- Remove 3 mm Phillips screw hidden by the sticker. Place in SLOT 4.

Step 11



- Picture 1: Remove two 2.3 mm Phillips screws. Place in SLOT 5.
- Picture 2: The camera screw holds down a metal bracket. Remove the bracket and place in SLOT 5.
- Picture 3: Remove five 2.3 mm Phillips screws. Place in SLOT 6.

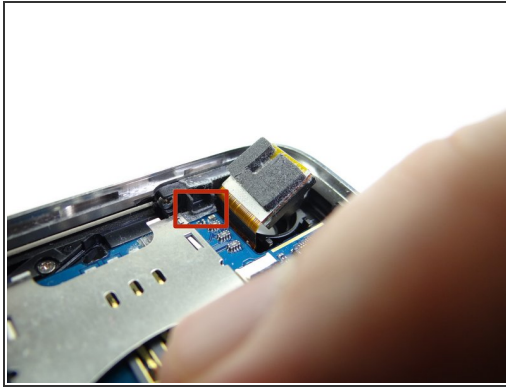
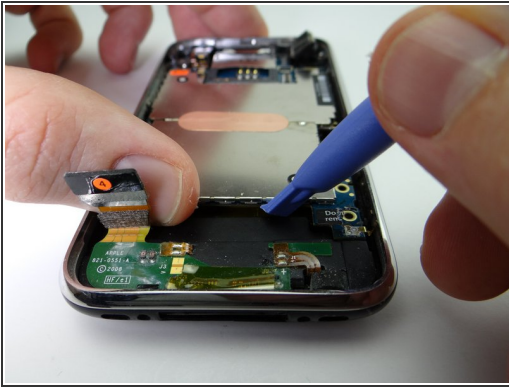
Step 12



- Pictures 1 & 2: Use blue pry tool to lift the camera slightly out of its socket, as shown in Picture 2.

⚠ DO NOT TRY TO REMOVE THE CAMERA. It's still attached to the underside of the logic board.

Step 13



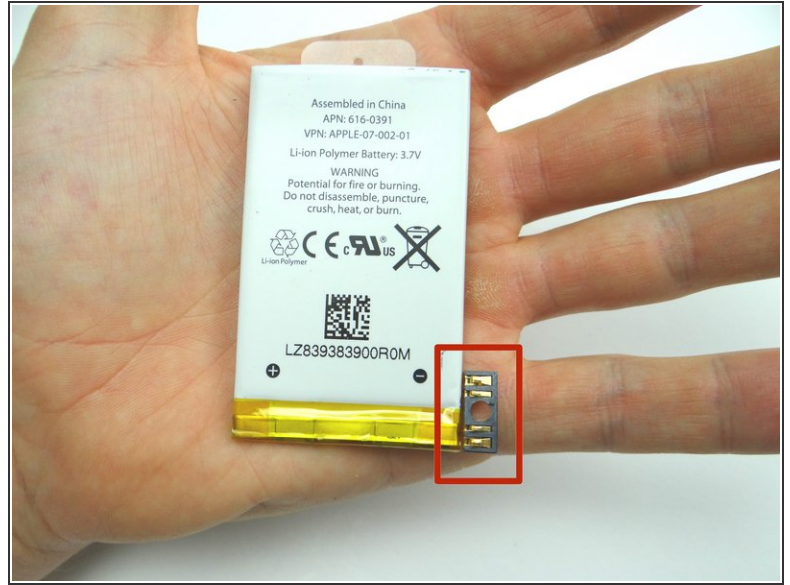
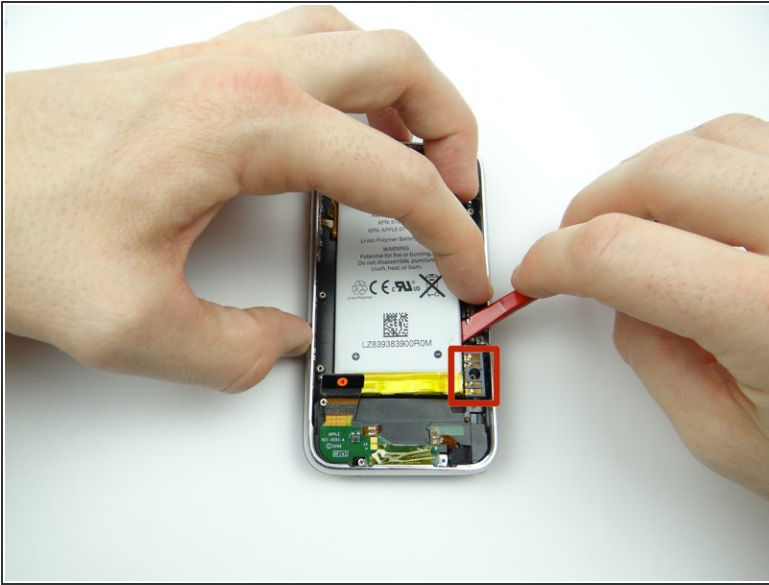
- Picture 1: Use blue pry tool to lift the logic board up from the rear case just enough to grab it with your fingers.
- Picture 2: Make sure you clear the ledge (red square) as you gently guide the logic board towards the bottom of the phone to remove it.
- Place logic board in ZONE III.

Step 14 — Removal 3.1.2 - Battery



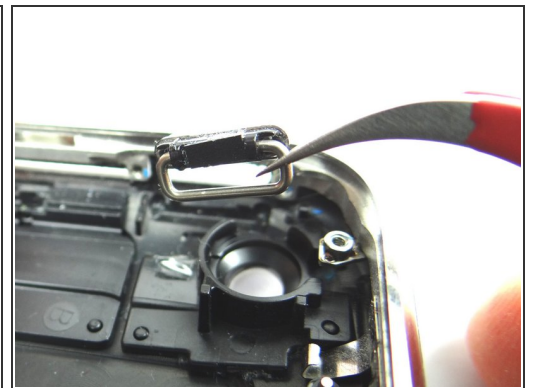
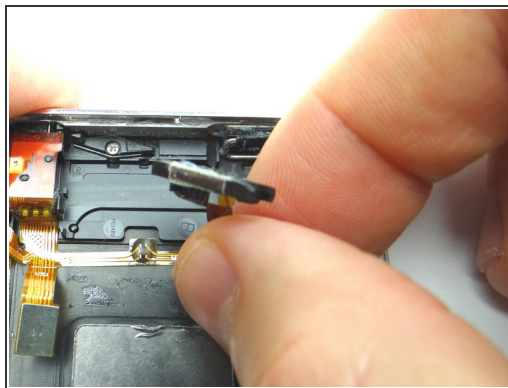
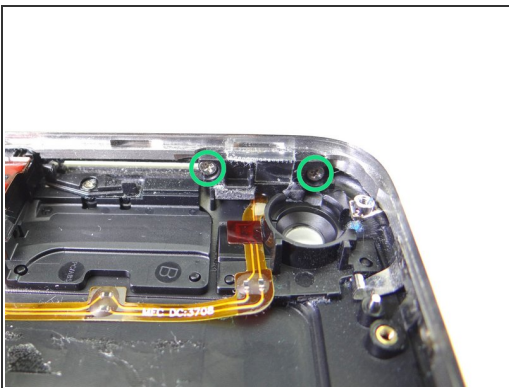
- Picture 1: Adhesive around the perimeter of the battery holds it to the rear case. Apply low-level heat (100° Celsius) to the underside of the rear case for 30 seconds to loosen the adhesive.
- Picture 2: Use the spudger to push through the adhesive under the battery.
- Picture 3: Work your way around the upper-right corner.

Step 15



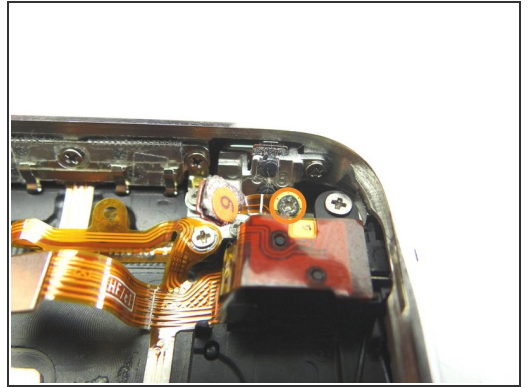
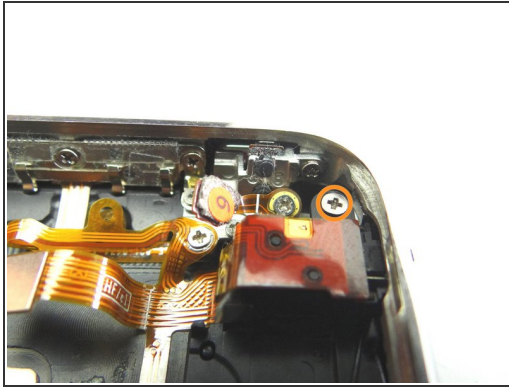
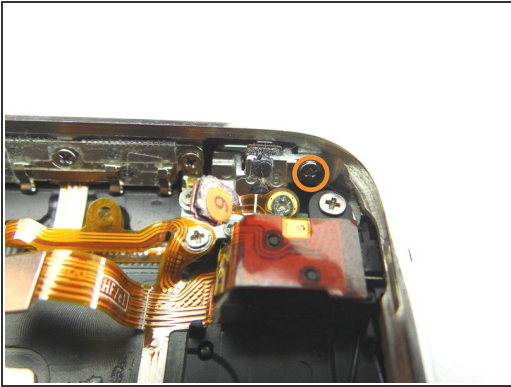
- Work your way down to the battery connector (red square).
- Work the battery up without warping the battery or damaging the connector.

Step 16 — Removal 3.2.1 - Power Button



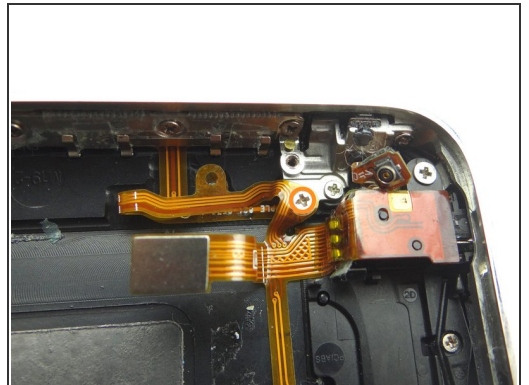
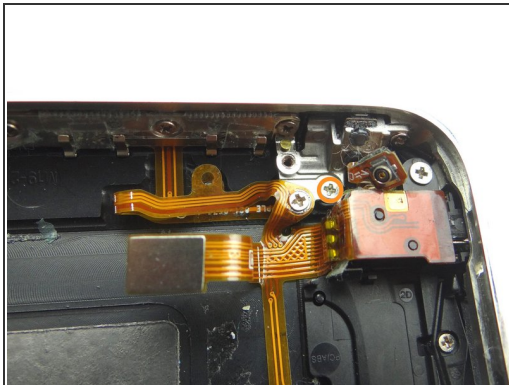
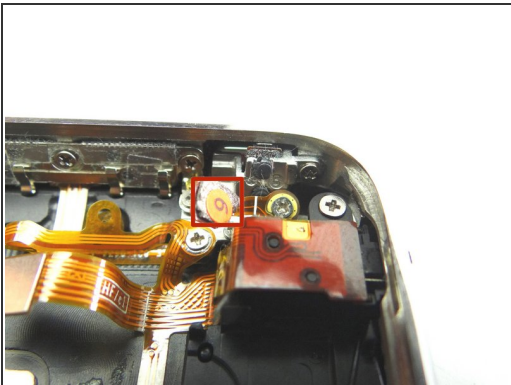
- Picture 1: Remove two 1.9 mm Phillips screws. Place in COMPARTMENT C.
- Picture 2: Peel power button cable away just enough to access the power button.
- Picture 3: Remove power button with curved tip tweezers. Place with screws in COMPARTMENT C.

Step 17 — Removal 3.2.2 - Mute Switch



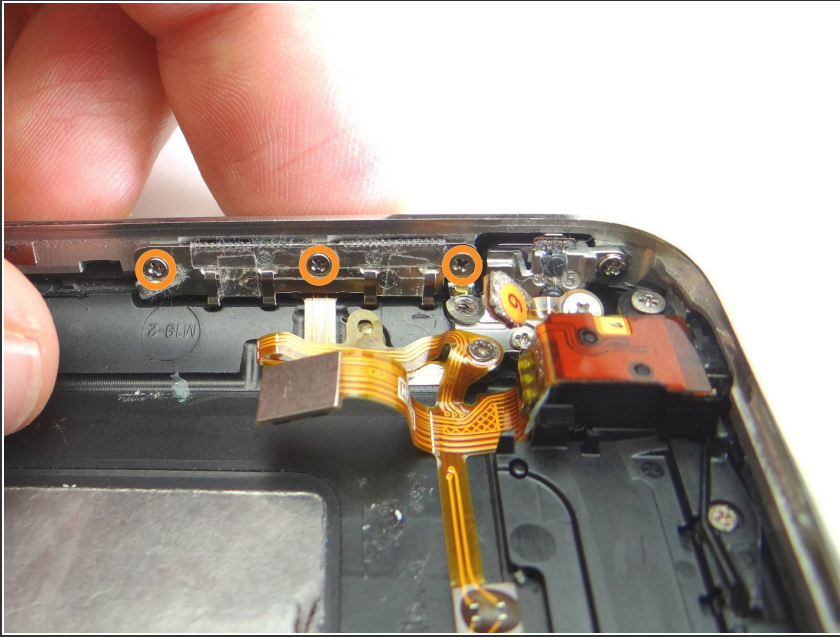
- Picture 1: Remove 1.9 mm Phillips screw. Place in SLOT 9.
- Picture 2: Remove 3.8 mm Phillips screw. Place in SLOT 10.
- Picture 3: Remove 1.8 mm Phillips screw. Place in SLOT 11.

Step 18



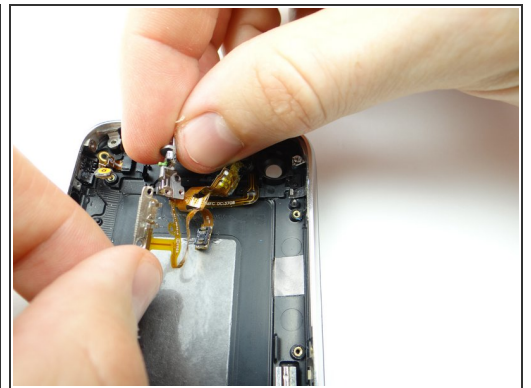
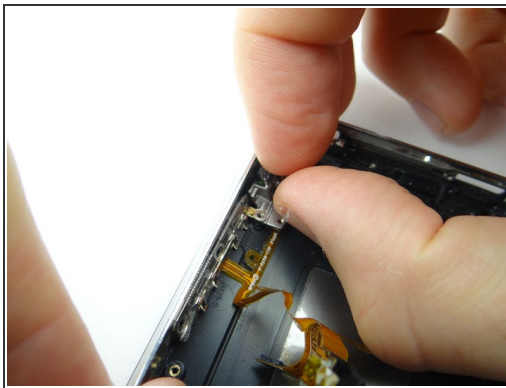
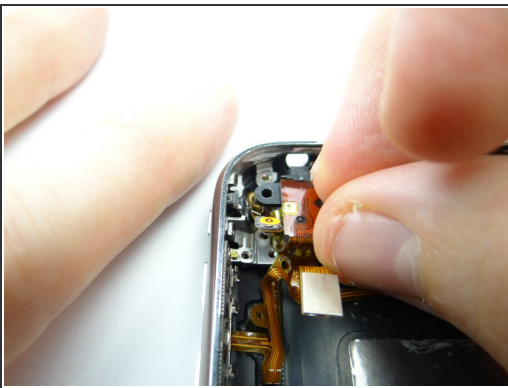
- Picture 1: There's a screw hidden underneath Cable 6:
- Picture 2: Remove 1.8 mm hidden screw. Place in SLOT 12.
- Picture 3: Remove 1.6 mm screw. Place in SLOT 13.

Step 19



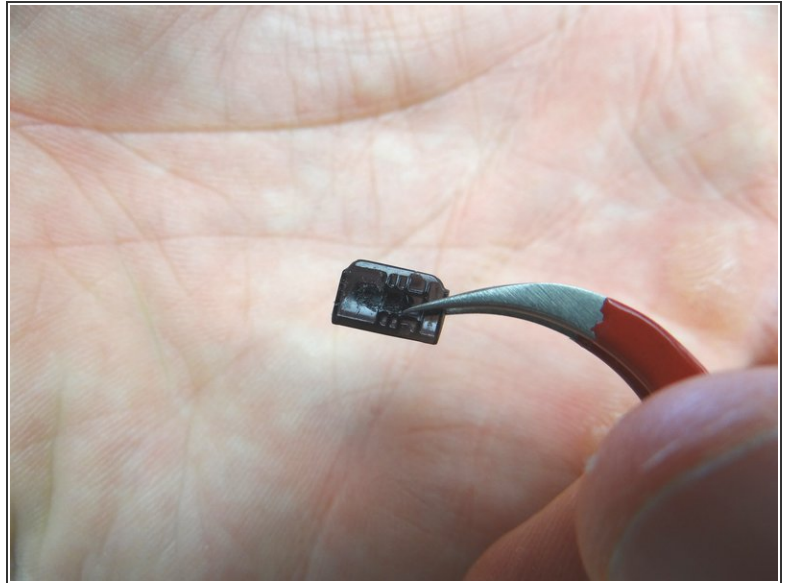
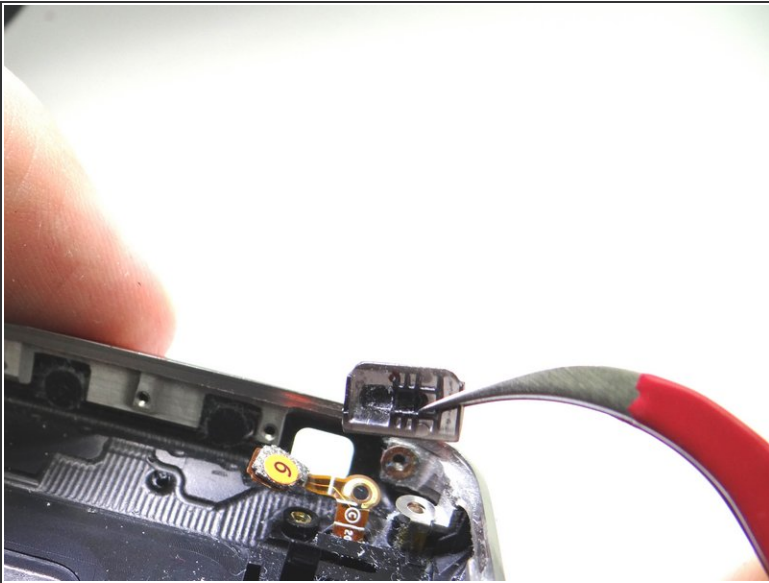
- Remove three 1.4 mm screws. Place in SLOT 14.

Step 20



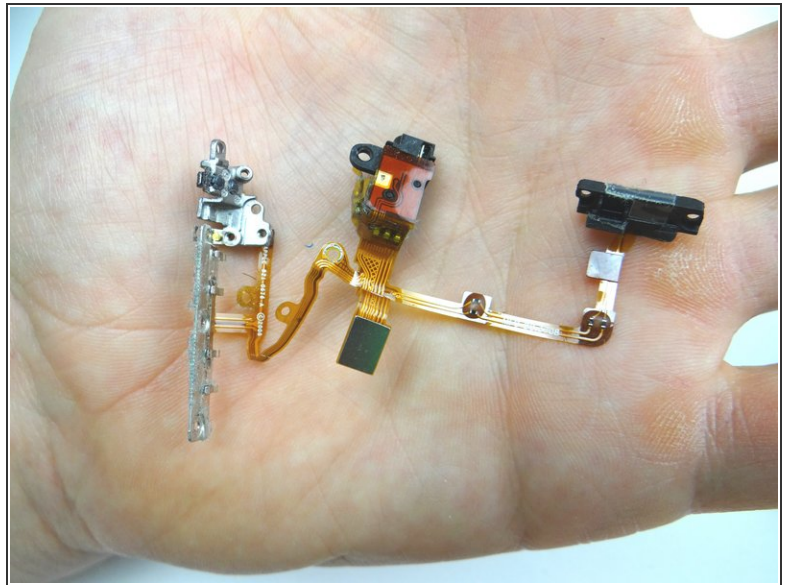
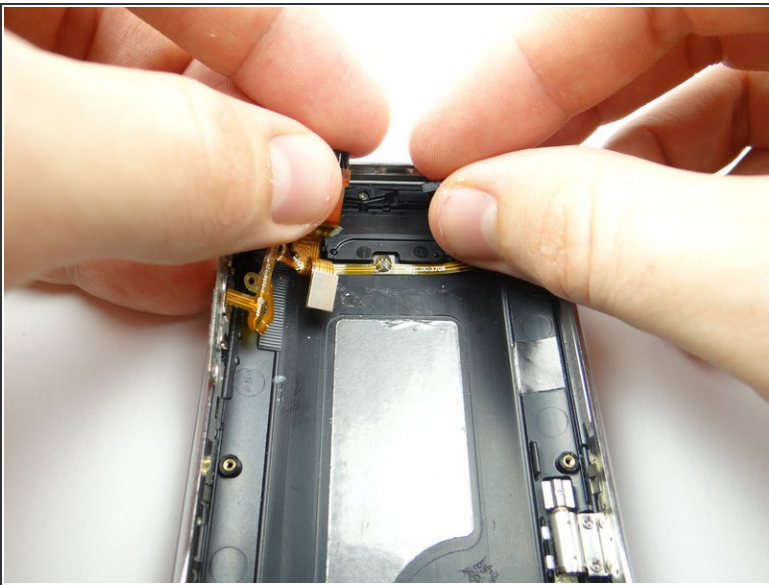
- Picture 1: Pull headphone jack away from its socket.
- Picture 2: Peel back mute switch gear.
- Picture 3: Peel the headphone jack, mute switch gear and volume buttons bracket right just enough to access the mute switch.

Step 21



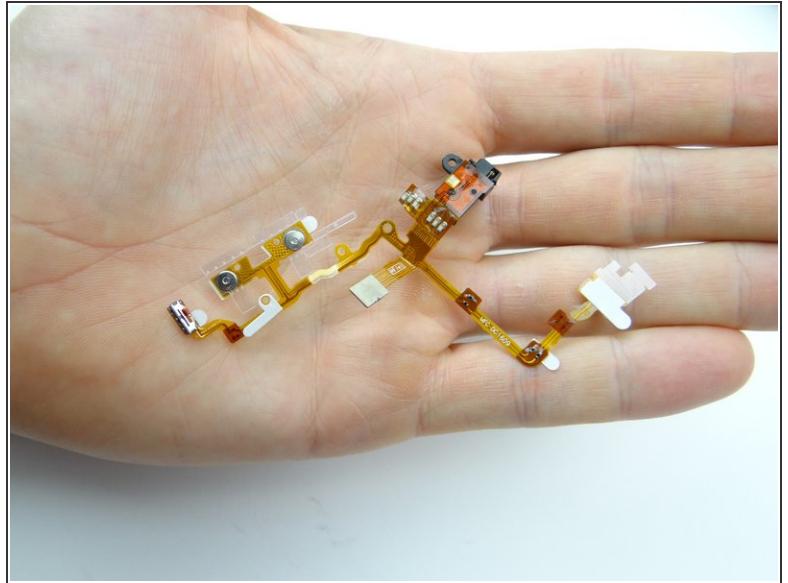
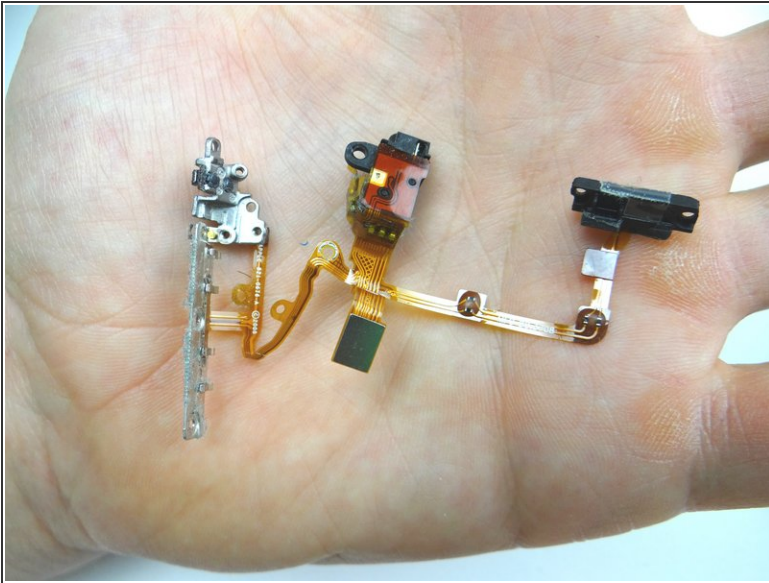
- Picture 1: Remove the mute switch with curved-tip tweezers.
- Picture 2: Place mute switch in COMPARTMENT D.

Step 22 — Removal 3.2.3 - Cable



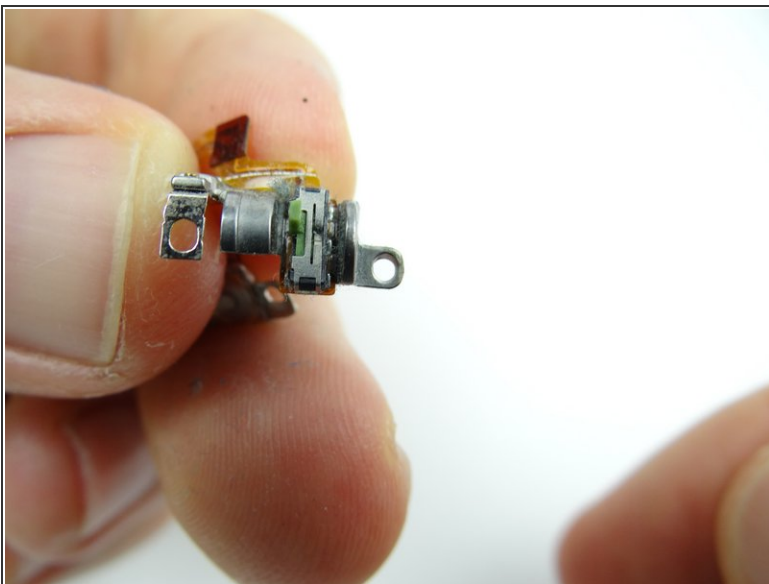
- Picture 1: Peel up volume / mute / headset / power cable assembly. Place in COMPARTMENT E.

Step 23 — Replacement 3.2.3 - Cable



- Picture 1: Retrieve the volume / mute / headset / power cable assembly from COMPARTMENT E.
- Picture 2: Retrieve the replacement cable.

Step 24



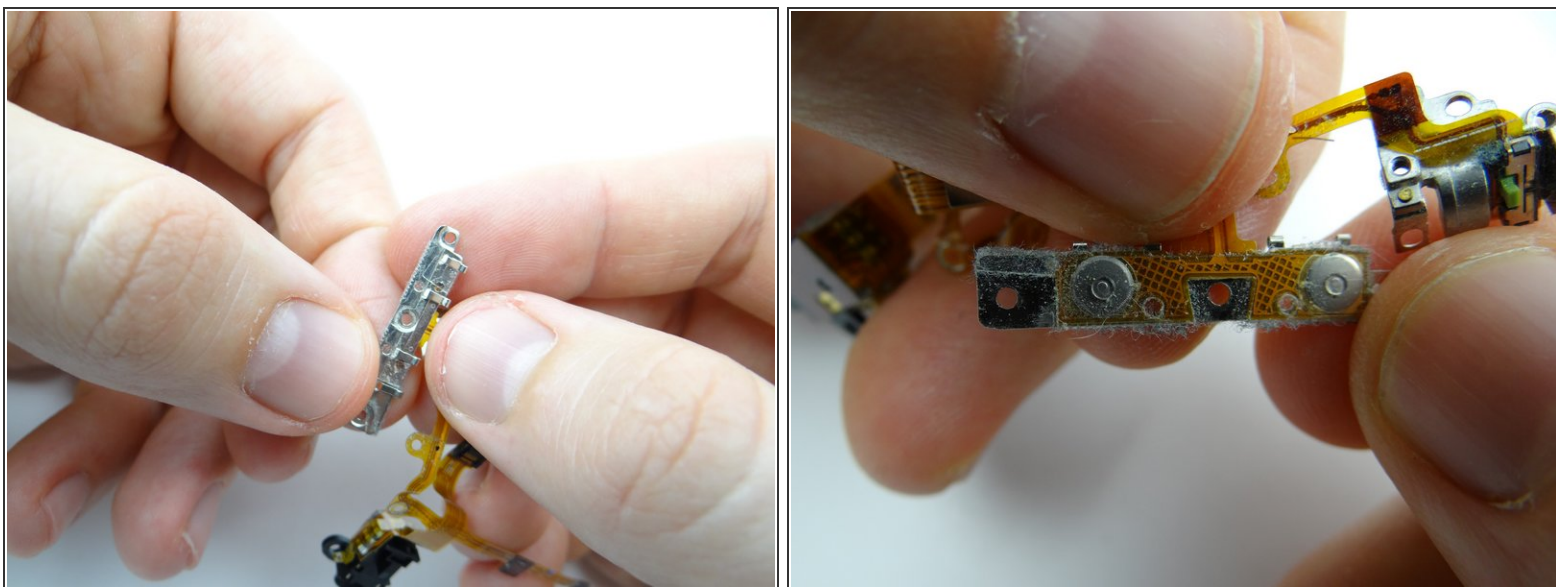
- Transfer mute switch gear from the old cable to the replacement cable:

Step 25



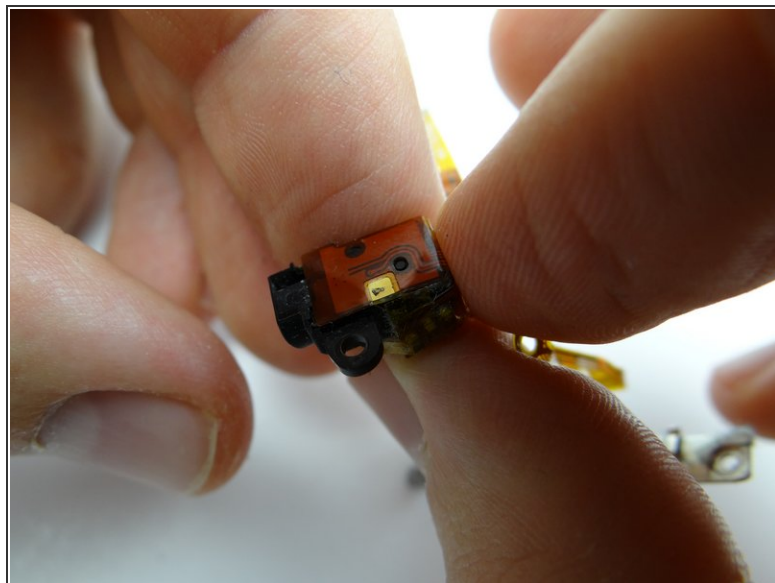
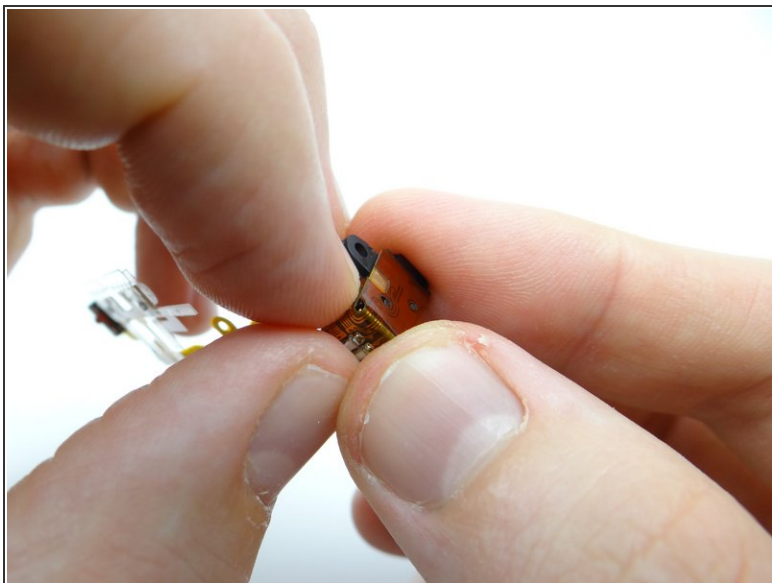
- Transfer the black power button contact frame to the replacement cable.

Step 26



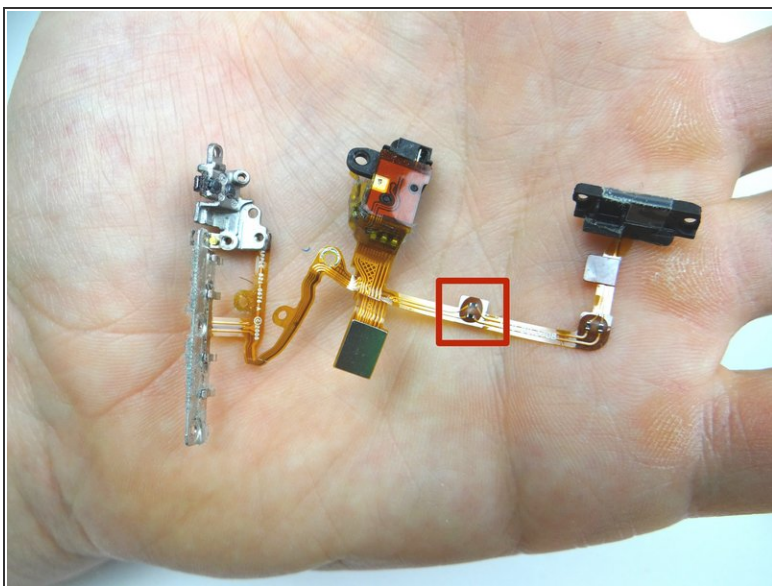
- Transfer the volume buttons bracket to the replacement cable.

Step 27



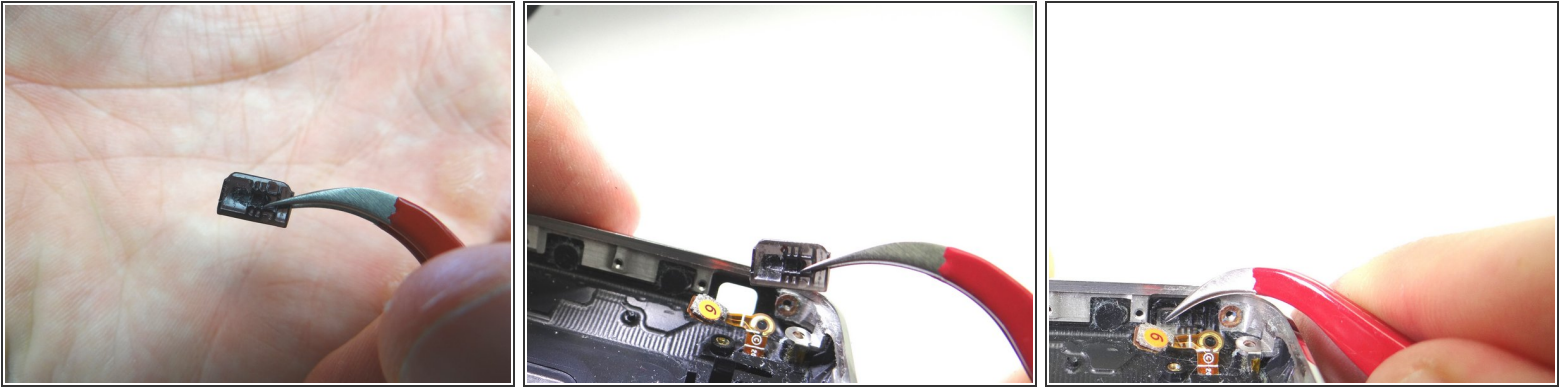
- Adhere cable to headset jack.

Step 28



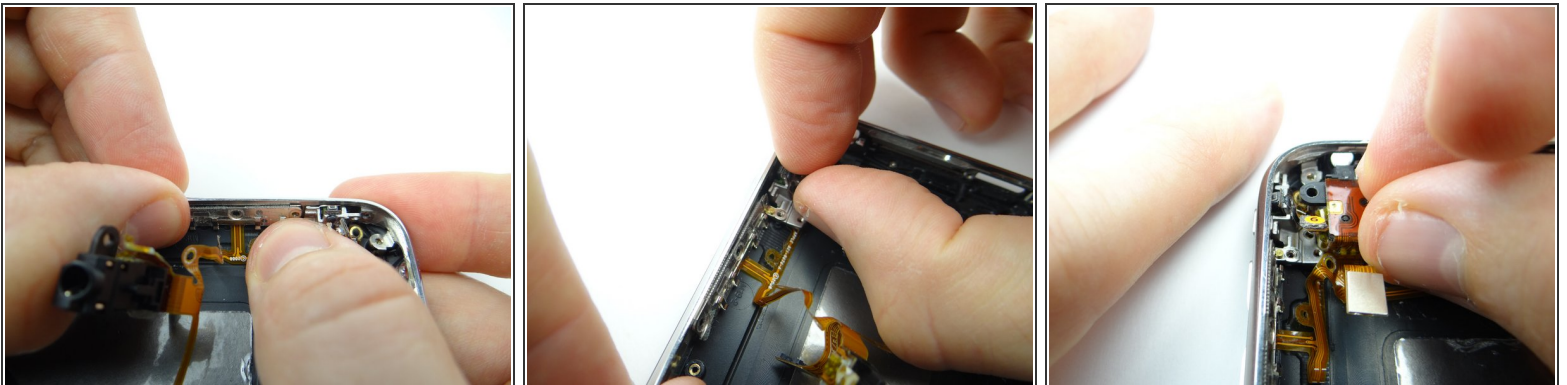
- Seat the contact (red square in Picture 1) on the notch on the rear case first (red square in Picture 2). Then line up and adhere the cable on either side of the notch.
- Don't connect any components yet.

Step 29 — Replacement 3.2.2 - Mute Switch



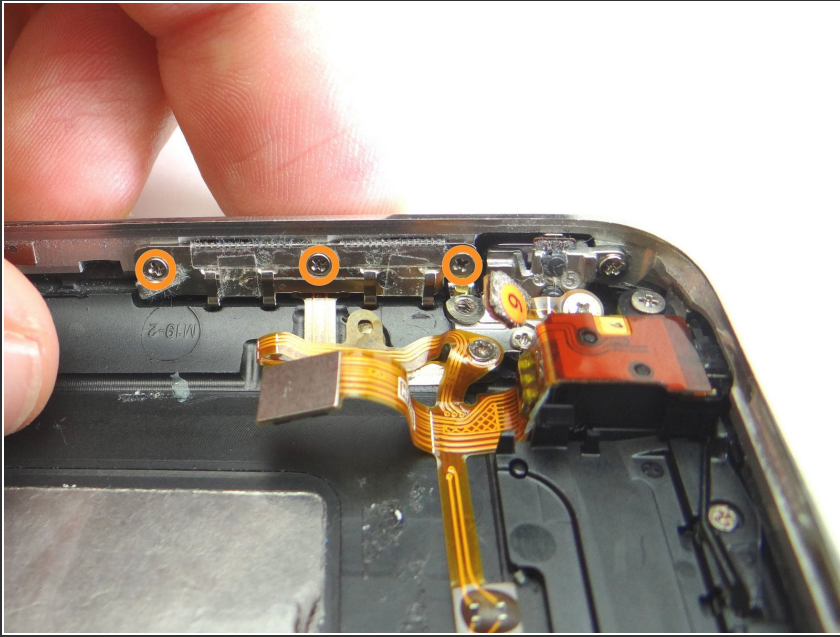
- From COMPARTMENT D, use tweezers to replace the mute switch. The pictures show the correct orientation.

Step 30



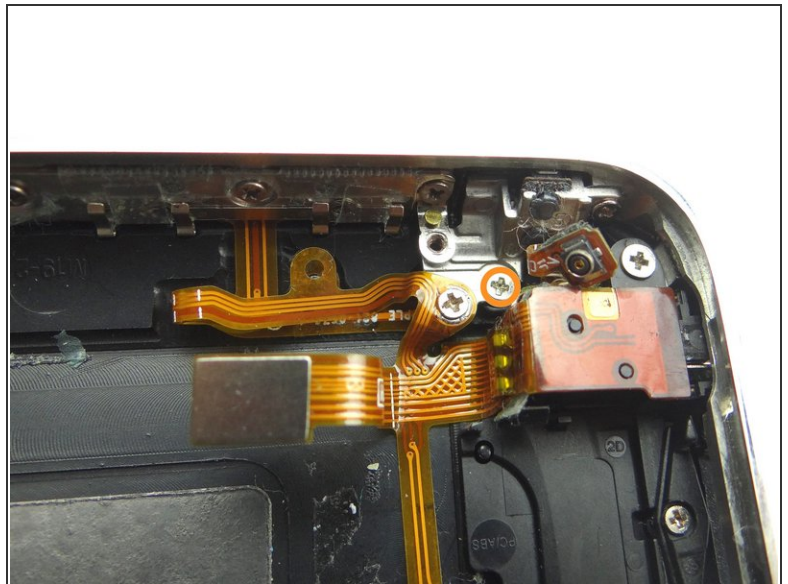
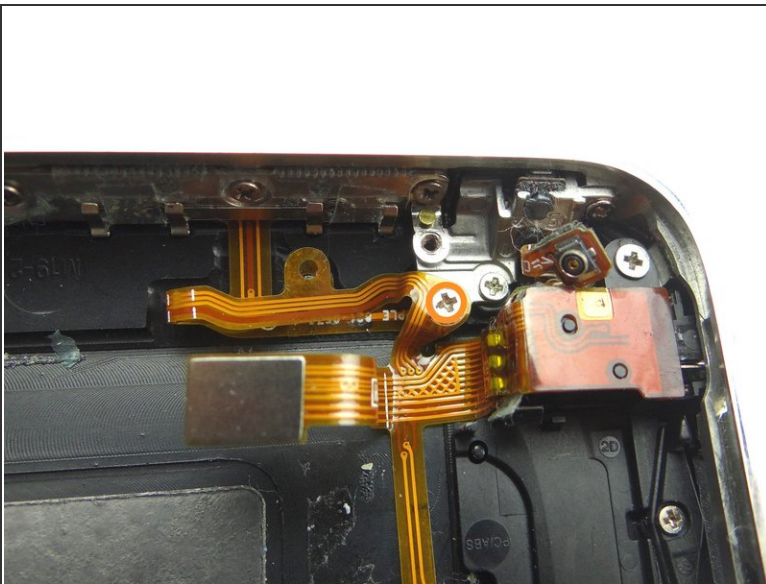
- Seat the volume bracket, mute bracket and headset jack.

Step 31



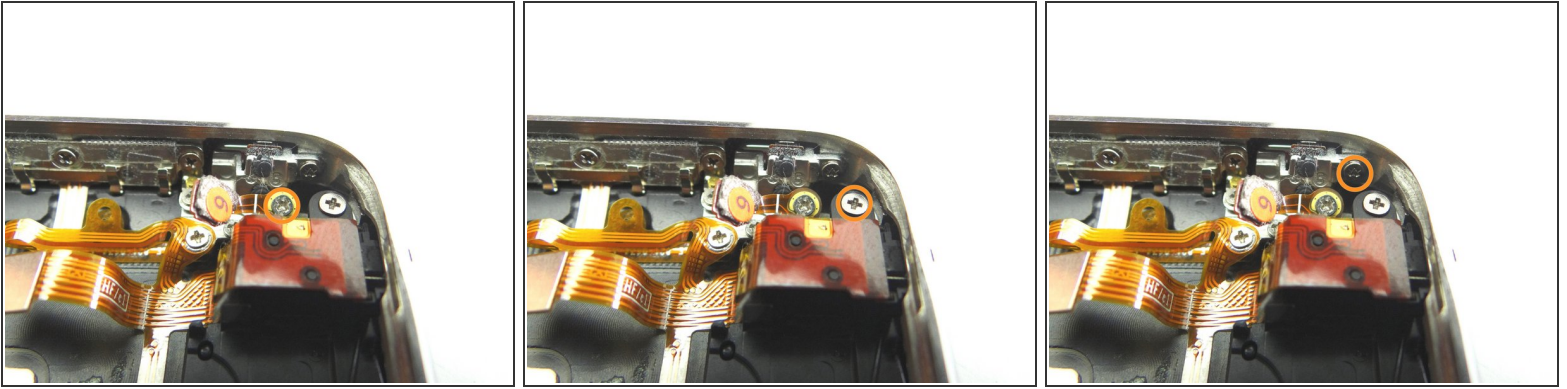
- From SLOT 14, replace three 1.4 mm screws.

Step 32



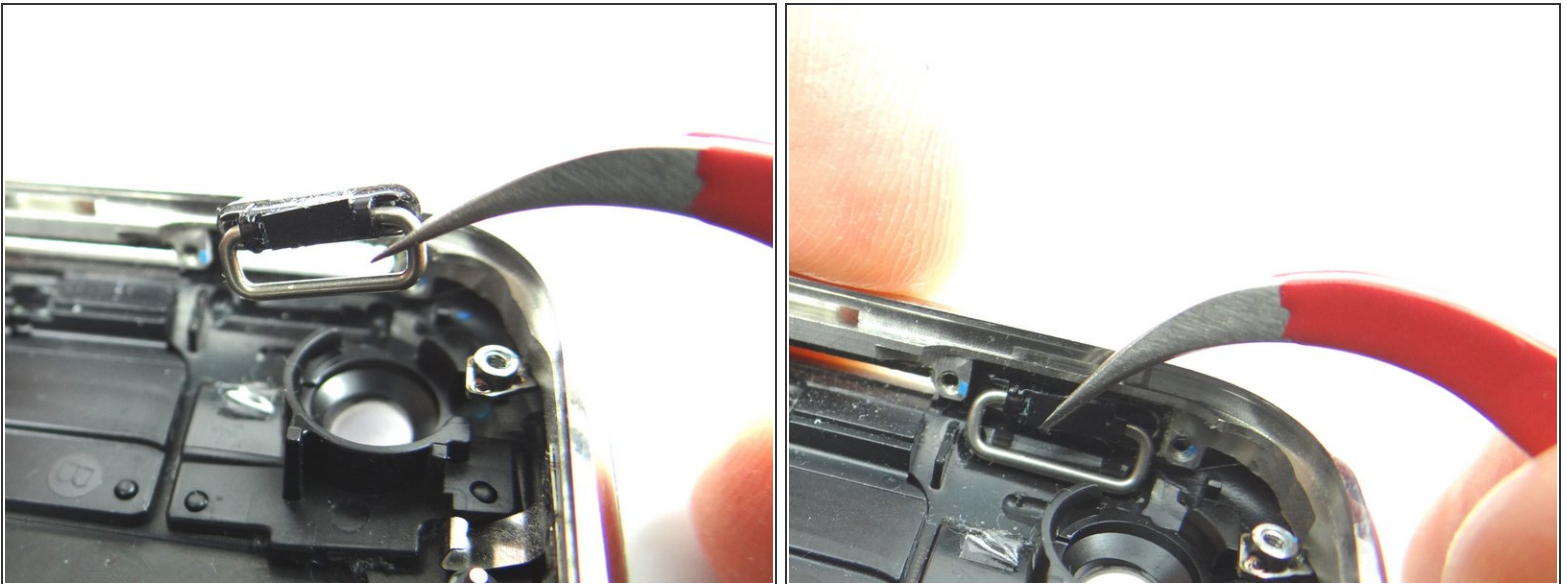
- Picture 1: From SLOT 13, replace 1.6 mm screw.
- Picture 2: From SLOT 12, replace 1.8 mm hidden screw.

Step 33



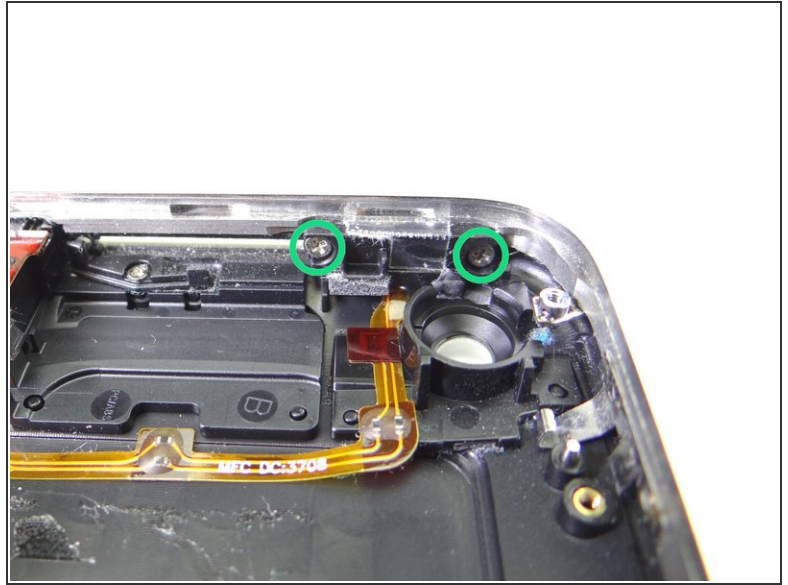
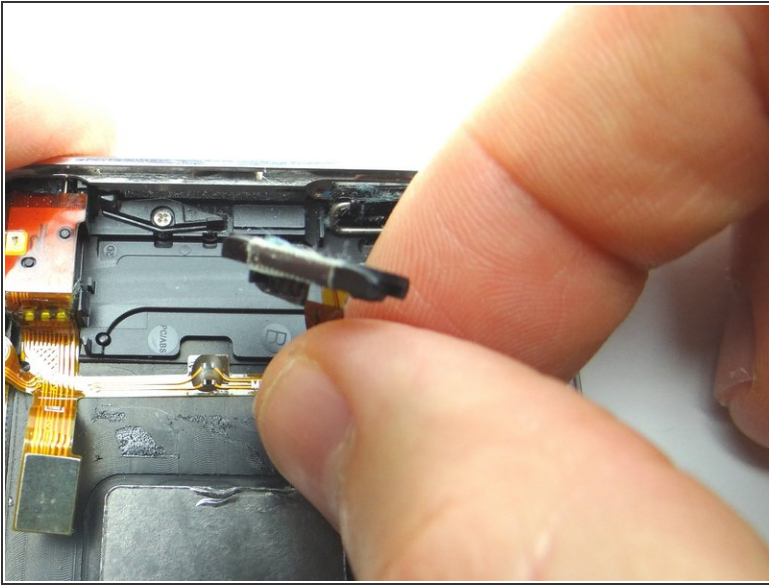
- Picture 1: From SLOT 11, replace one 1.8 mm screw.
- Picture 2: From SLOT 10, replace one 3.8 mm Phillips screw.
- Picture 3: From SLOT 9, replace one 1.9 mm Phillips screw.

Step 34 — Replacement 3.2.1 - Power Button



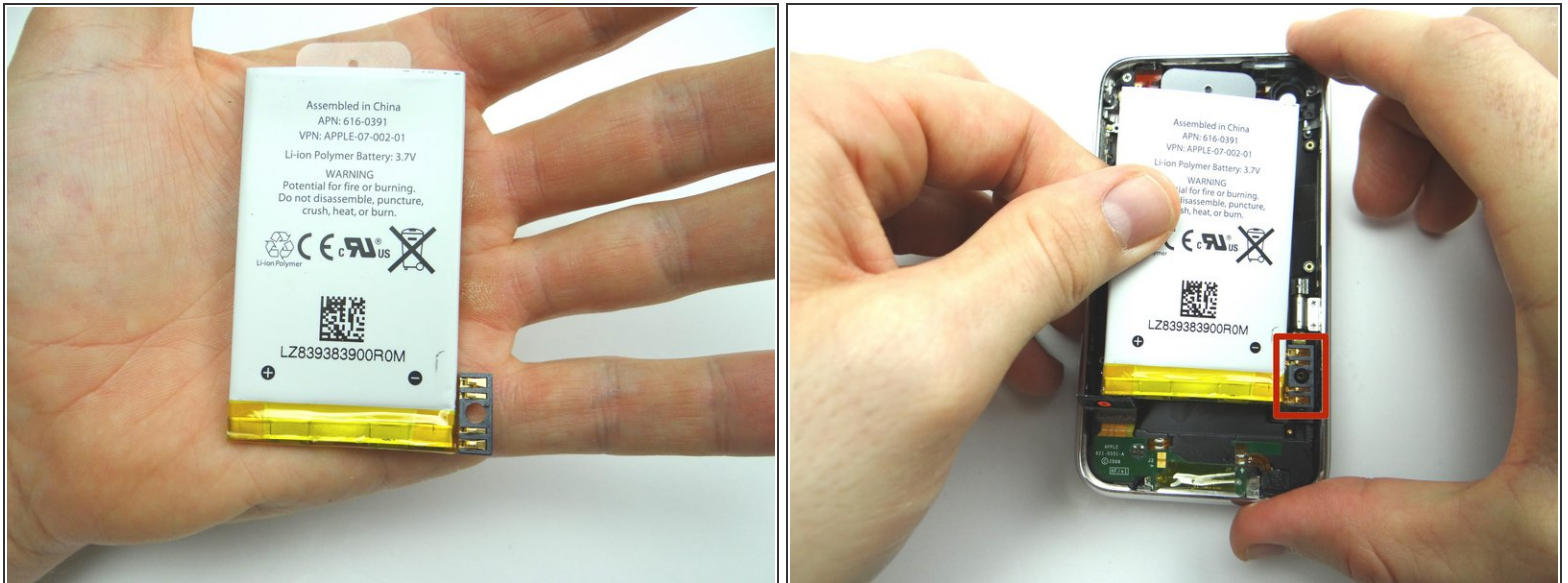
- From COMPARTMENT C, use curved-tip tweezers to place the power button.
- Push the power button into place. The pictures show the correct orientation.

Step 35



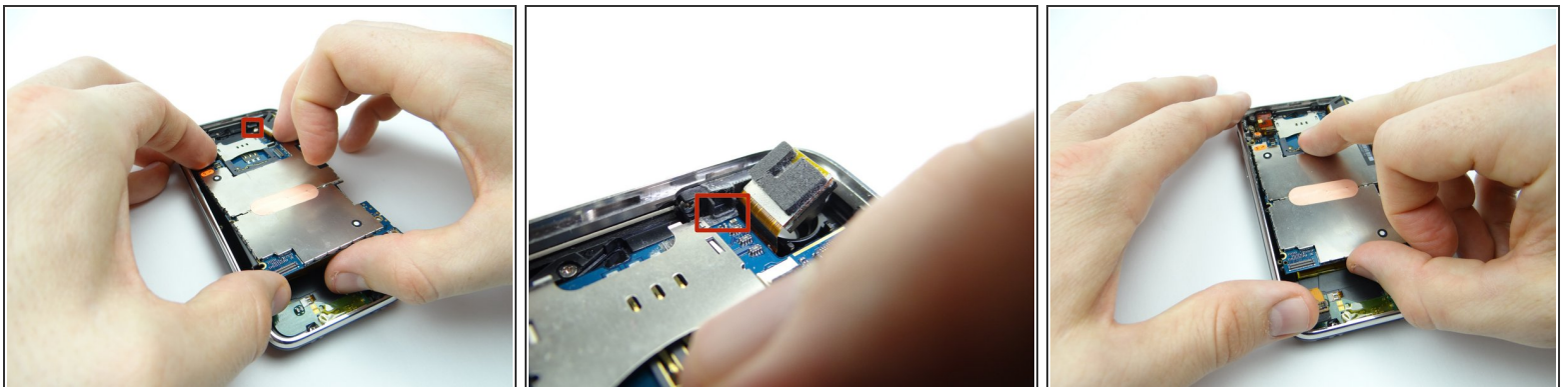
- Seat the power button cable and bracket.
 - FROM COMPARTMENT C, replace two 1.9 mm Phillips screws.
- i** The power button should have some play without feeling loose or tight: After tightening the screws, press the power button a few times. Loosen or tighten the screws a quarter turn as needed.

Step 36 — Replacement 3.1.2 - Battery



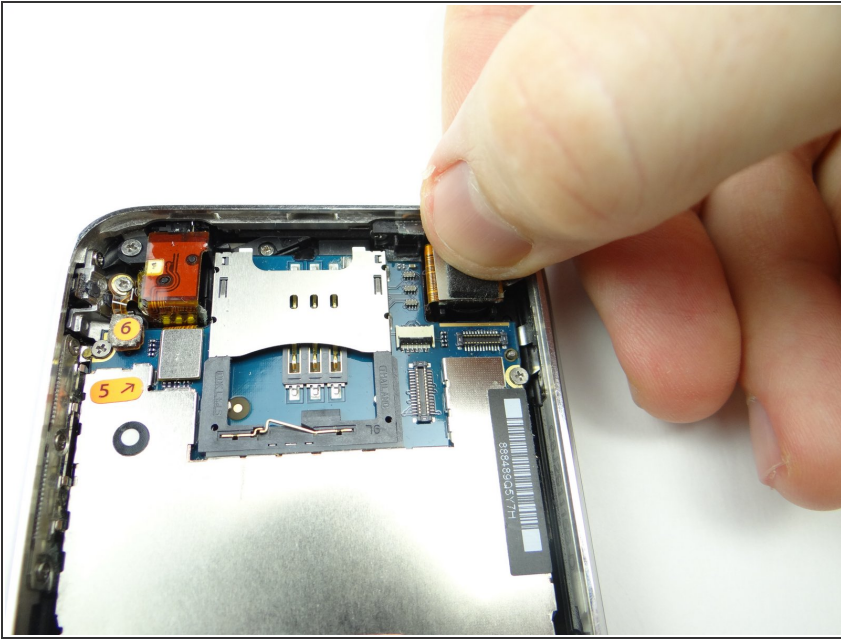
- Place the battery in the rear case: seat the contact pad first, then continue seating the battery.

Step 37 — Replacement 2.3 - Logic Board



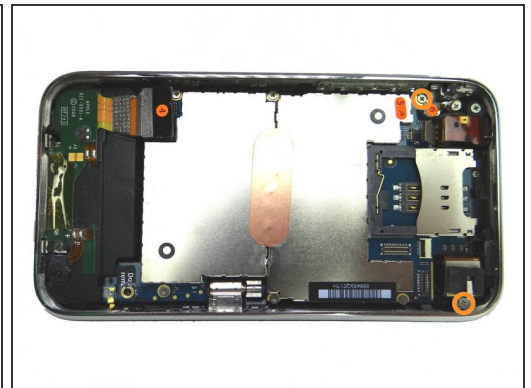
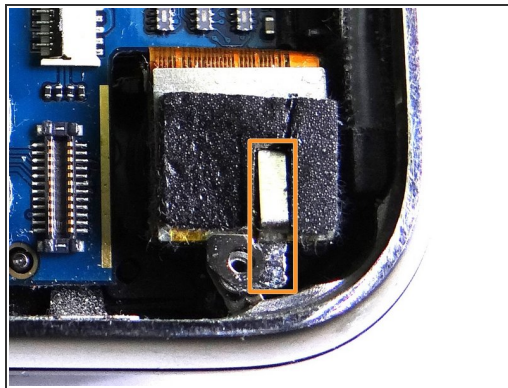
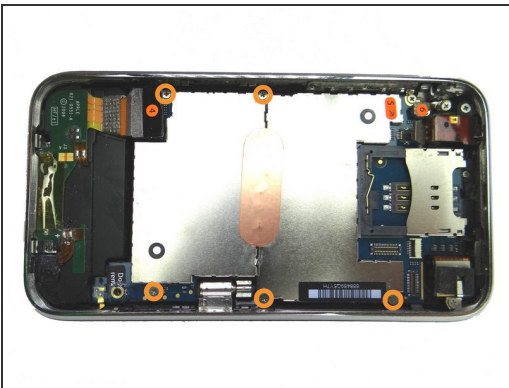
- Pictures 1 & 2: From ZONE III, seat top of logic board first. Make sure the logic board is situated below the ledge shown in the red square.
- Picture 3: Hold the charging port cable out of the way while seating the bottom of the logic board.

Step 38



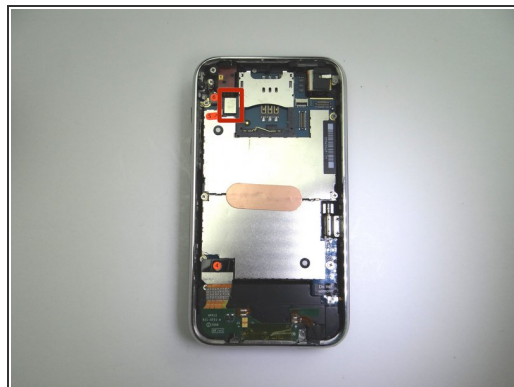
- Seat the camera.

Step 39



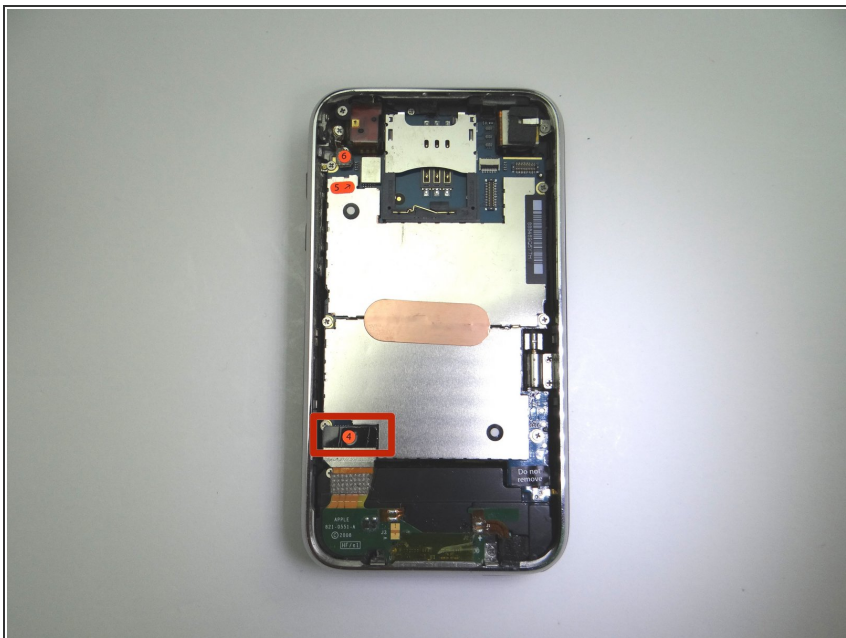
- Picture 1: From SLOT 6, replace five 2.3 mm screws.
- Picture 2: From SLOT 5, seat metal camera bracket.
- Picture 3: From SLOT 5, replace two 2.3 mm screws.

Step 40



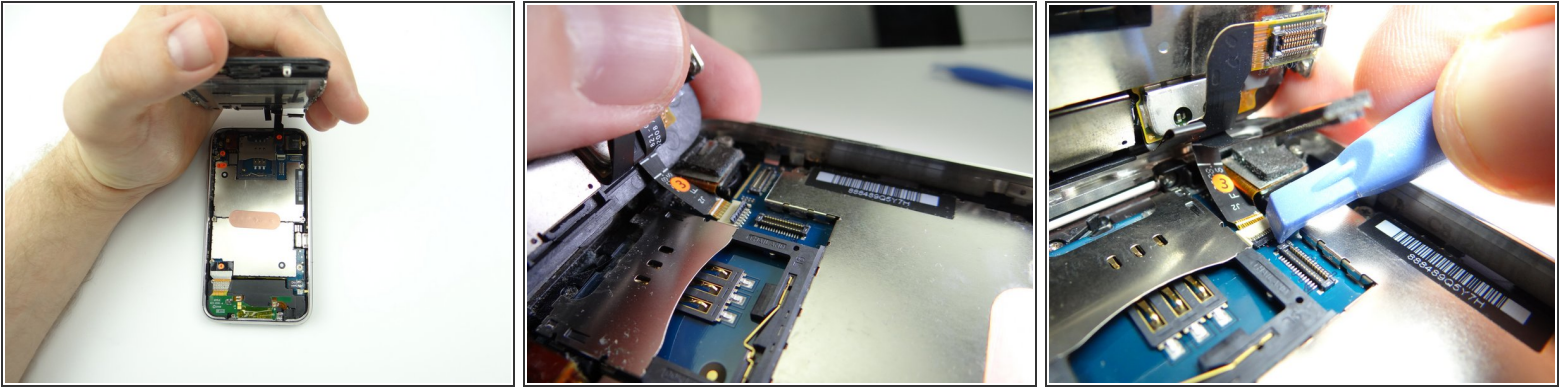
- Picture 1: From SLOT 4, replace the 3 mm 'Do not remove' screw.
- Picture 2: Use your finger to seat cable #6.
- Picture 3: Use your finger to seat cable #5.

Step 41



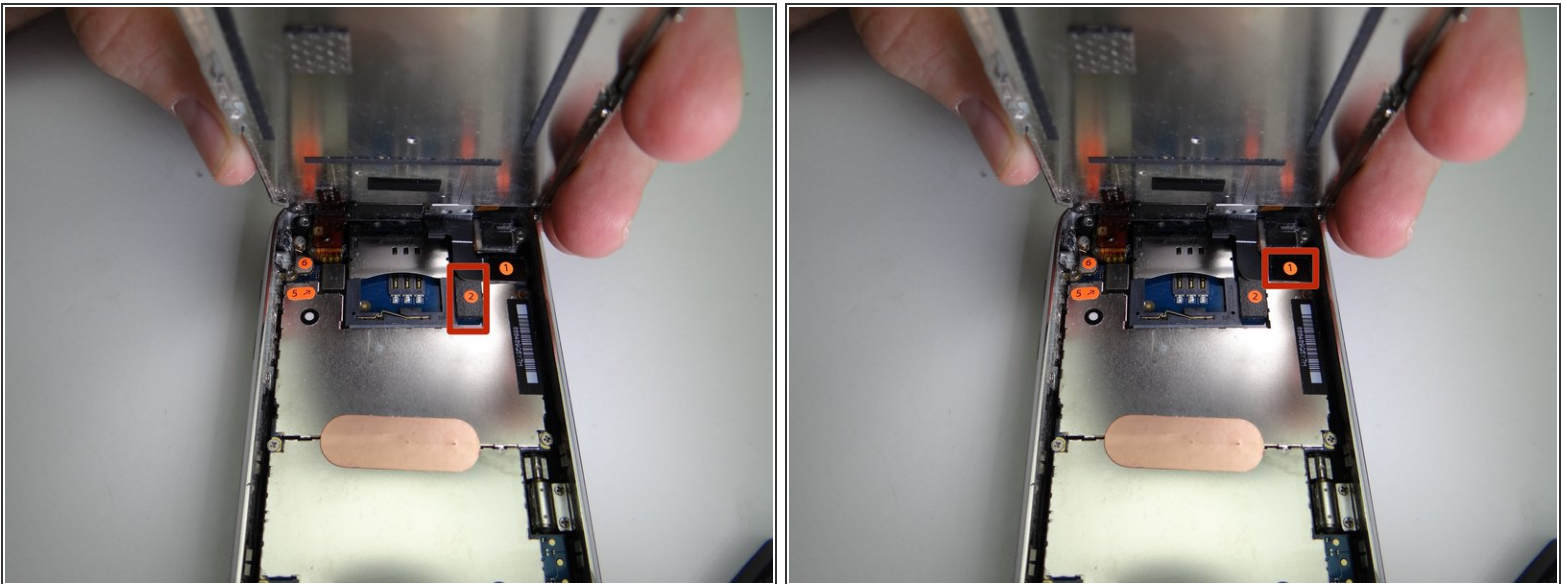
- Use your finger to seat cable #4.

Step 42 — Replacement 1 - Front Panel



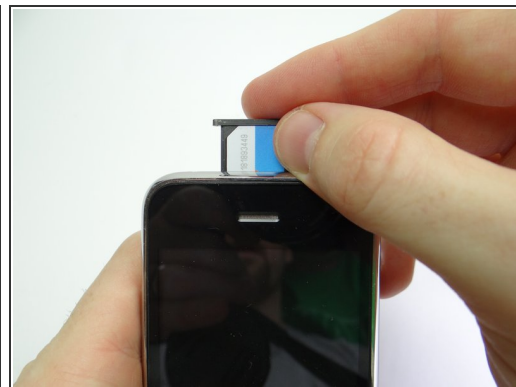
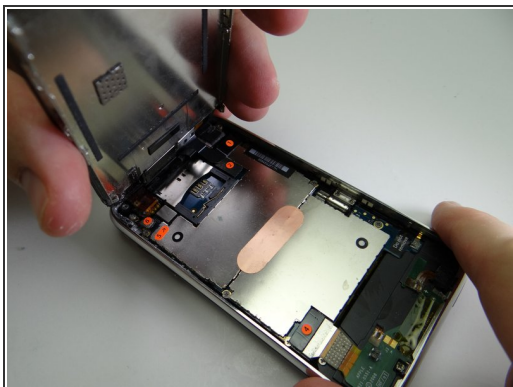
- Picture 1: Reattach front panel to rear case:
- Picture 2: Guide cable '3' into the ZIF connector.
- Picture 3: Use the blue pry tool to sweep down black swing bar to close ZIF connector.

Step 43



- Use your finger to reconnect cable '2' then cable '1'.

Step 44



- Picture 1: Fold the front panel into the rear case.
- Picture 2: From SLOT 1, replace two Phillips #00 screws.
- Picture 3: Replace SIM card and tray from COMPARTMENT A.

Step 45



- Power up and test the device.