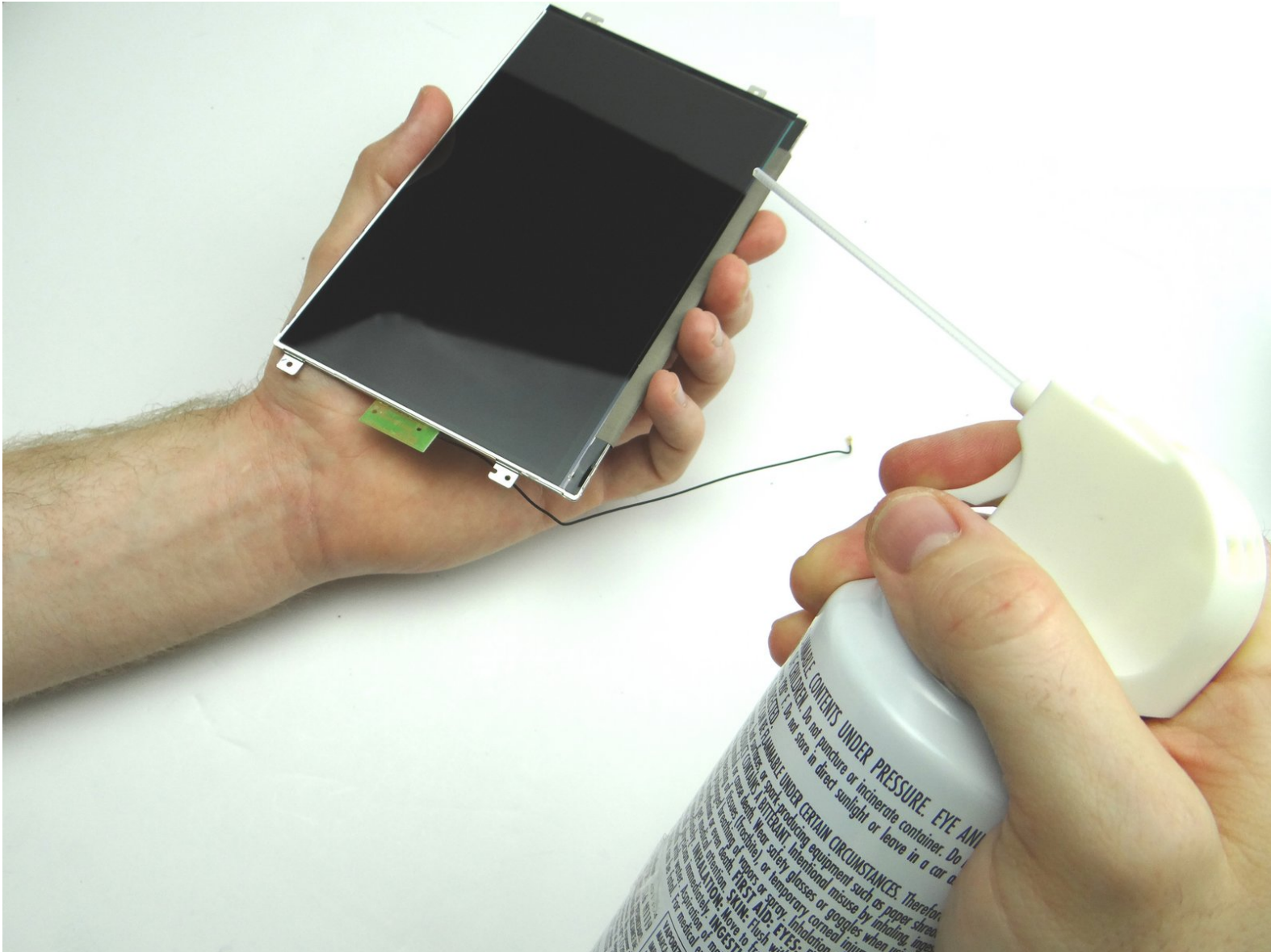


CELLPHONESANDBOX

Manual 06 - LCD

Written By: James Linder



Step 1 — Removal 1 - Battery Cover



- In the next few steps, you'll be opening the Kindle by freeing the clips marked in Picture 2.

Step 2



- Picture 1: Insert the blue pry tool directly under the charging port.
- Picture 2: Slide the blue pry tool slightly left, under the headset jack.
- Picture 3: Pry the battery cover open just enough to insert a guitar pick left of the headset jack.

Step 3



- Picture 1: Slide the blue pry tool right, under the power button.
- Picture 2: Pry the battery cover open just enough to insert a guitar pick right of the power button.

Step 4



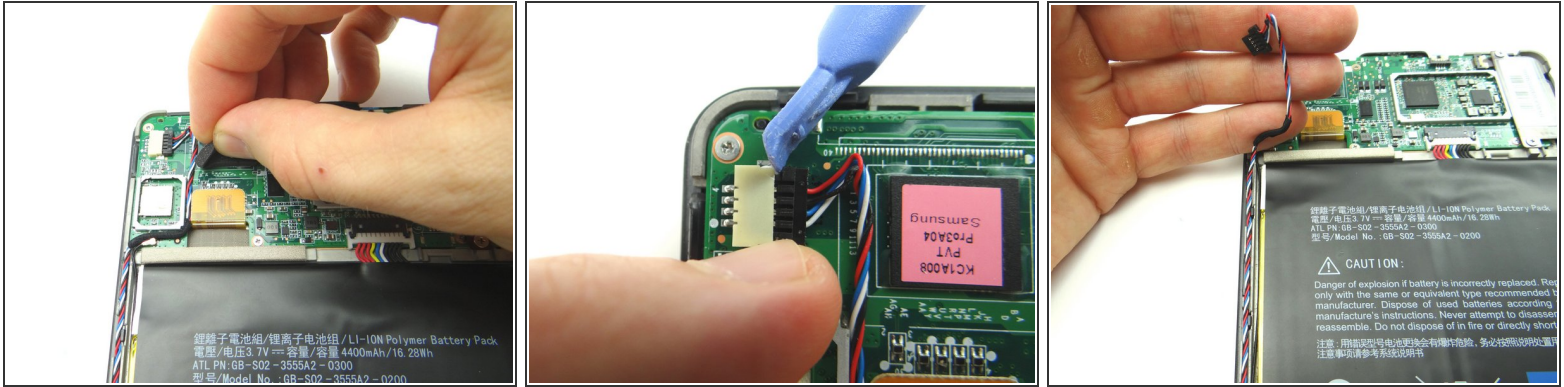
- Pry from the bottom of the Kindle to the top to release the battery cover clips.
- Pry up the other side.

Step 5



- With the Kindle upside down (charging port at top), use your hands to separate the battery cover from the Kindle. Start at the charging port and work your way down.
- Place battery cover in ZONE V.

Step 6 — Removal 2 - Loudspeaker



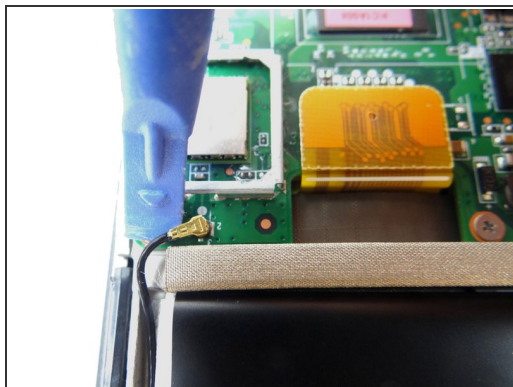
- Picture 1: Peel up foam tape covering the speaker connector. Place in COMPARTMENT A.
- Picture 2: Wedge your fingers in the notches between the black speaker cable head and the white speaker connector. Pull the black speaker cable head free.
- ⓘ Use a blue pry tool if you can't fit your fingers in the notches.
- Picture 3: Unthread the speaker cable.

Step 7



- Remove two 3.3 mm Phillips #00 screws securing the speaker assembly. Place in SLOT 1.
- Remove speaker assembly and place in ZONE I.

Step 8 — Removal 3 - Battery



- Use the blue pry tool to disconnect the antenna cable head.
- Unthread antenna cable, but don't try to remove it.

Step 9



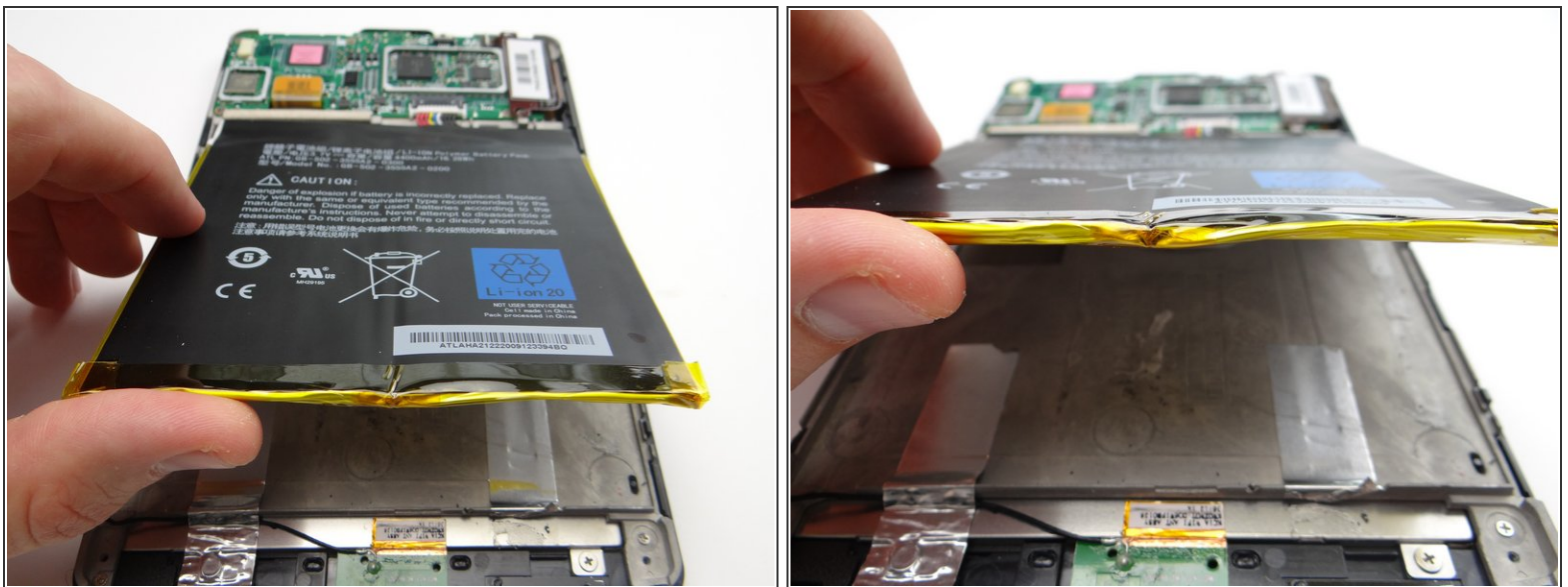
- Picture 1: Wedge the spudger under the lower-right corner of the battery.
- Pictures 2 & 3: Work your way up the right side.

Step 10



- Picture 1: Wedge the spudger under the lower-left corner of the battery as shown.
- Pictures 2 & 3: Work your way up the left side.

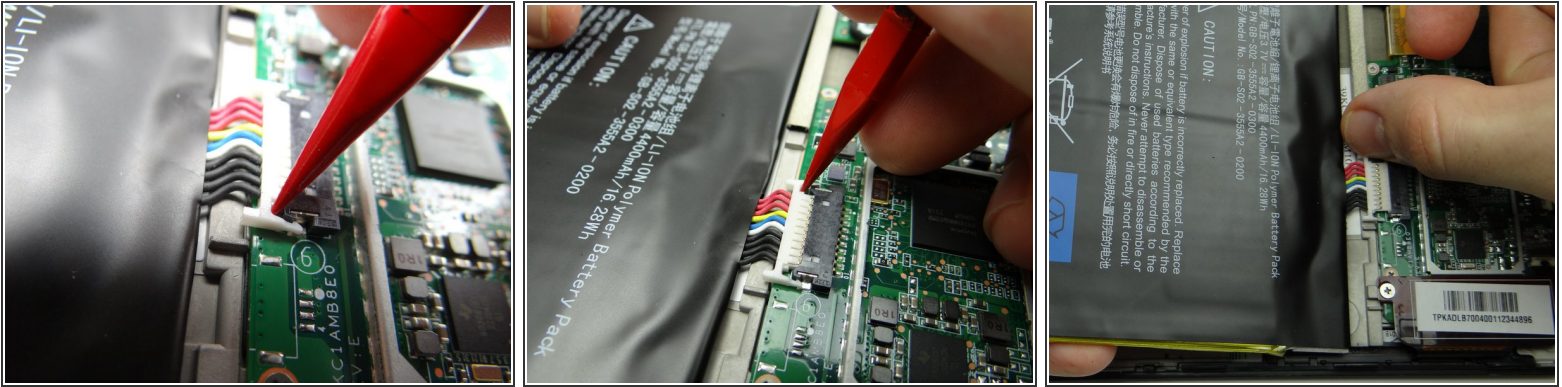
Step 11



⚠ Don't try to remove the battery as it's still connected to the logic board:

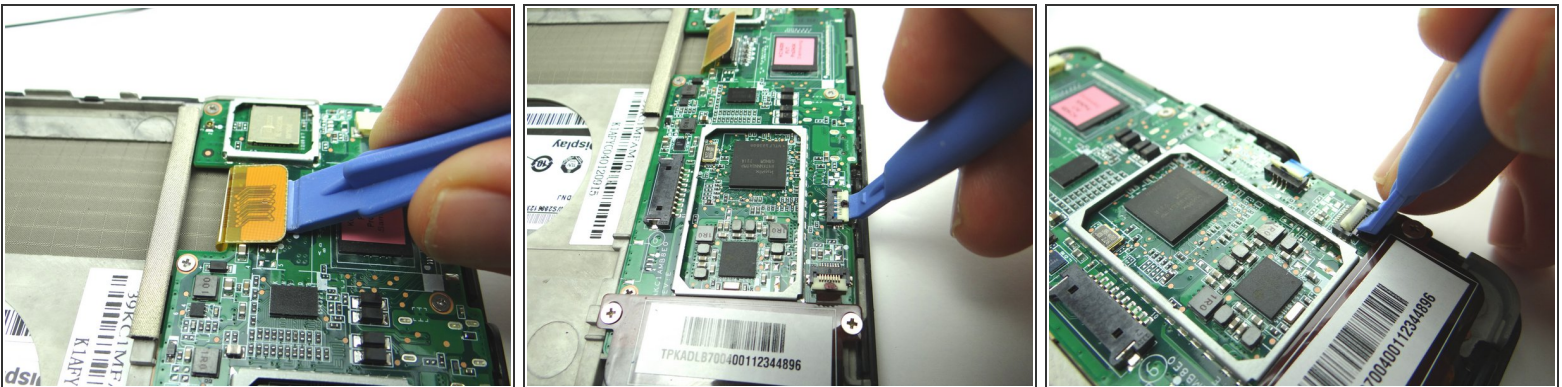
- Lift the battery up from the bottom to free it from the adhesive.
- Lift it to a 45° angle.

Step 12



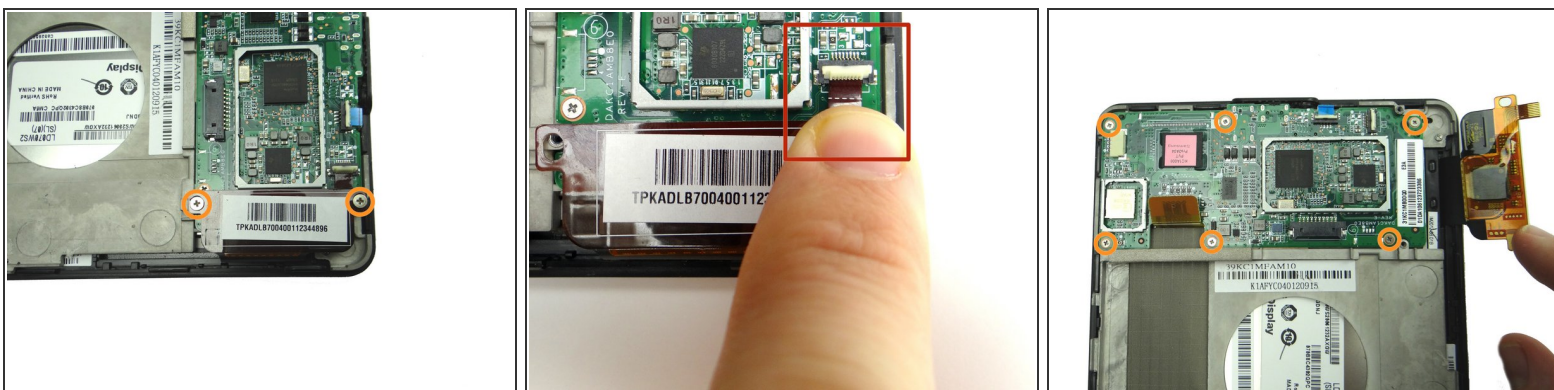
- Disconnect the battery:
- Pictures 1 & 2: Wedge the pointed end of the spudger on either side of the battery connector to unhook it.
- Picture 3: Make sure both sides are unhooked while pulling the battery up and away from the Kindle. Place the battery in ZONE V with the battery cover.

Step 13 — Removal 4 - Logic Board



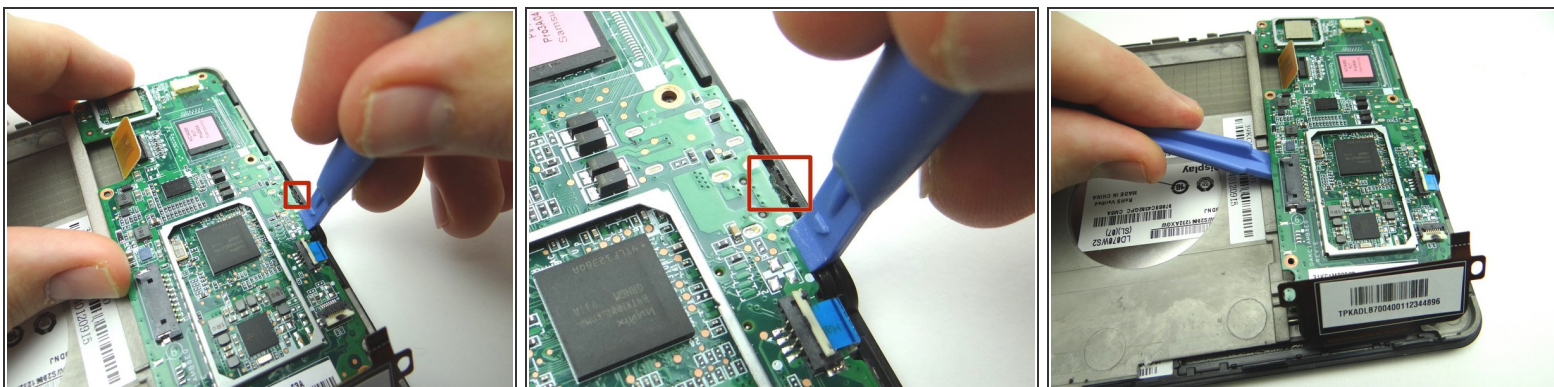
- Picture 1: Use a wide blue pry tool to disconnect the LCD cable.
- Picture 2: Open the ZIF connector securing the power button cable.
- Picture 3: Open the ZIF connector securing the digitizer cable.

Step 14



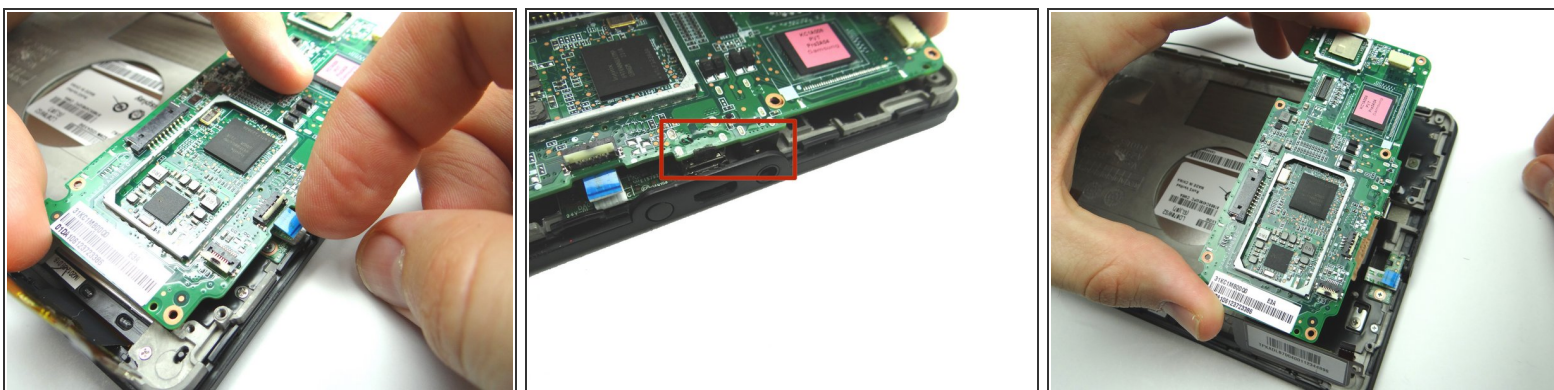
- Picture 1: Remove two 2.3 mm Phillips screws holding down the digitizer cable. Place in SLOT 2.
- Picture 2: Slide the digitizer cable connector out with your finger.
- Picture 3: Remove six 2.6 mm Phillips screws securing the motherboard. Place screws in SLOT 3.

Step 15



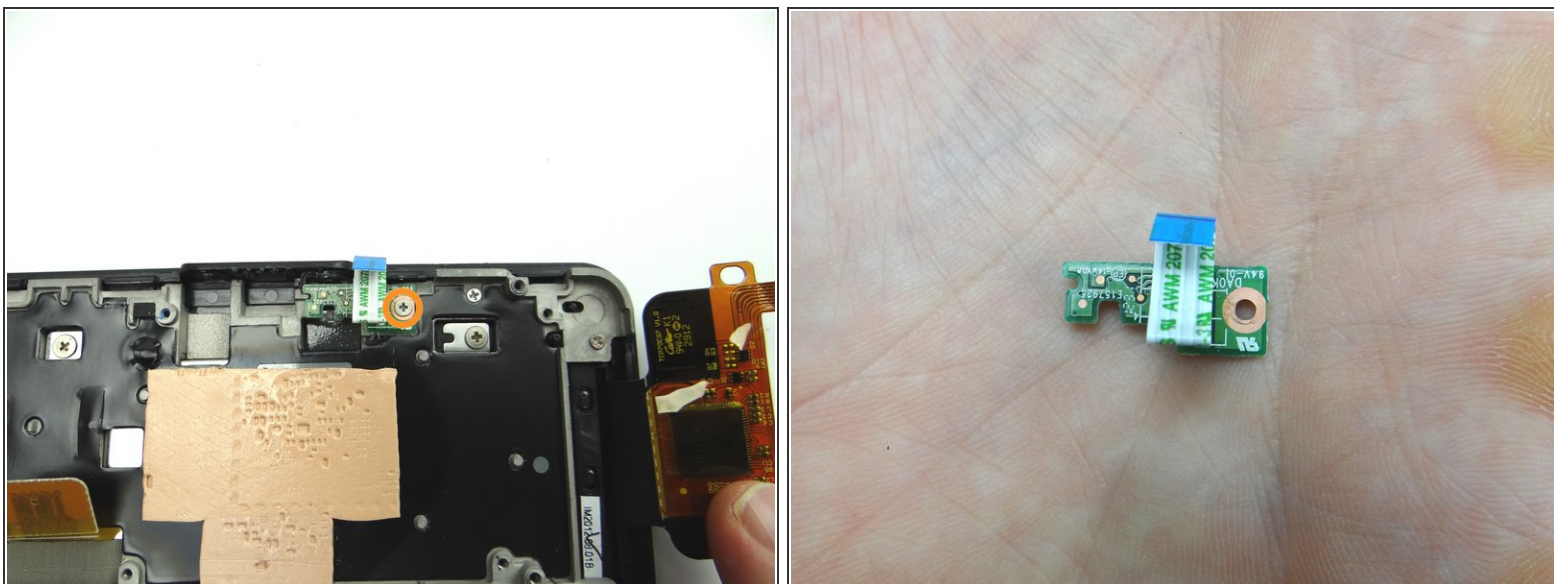
- Pictures 1 & 2: Wedge the blue pry tool between the logic board and front panel exactly where shown. Pry just enough to pivot the logic board around the notch in the red square.
- Picture 3: The bottom of the logic board is lightly adhered to the mid-plate. Wedge the wide blue pry tool exactly where shown. Gently twist counter-clockwise to lift the bottom of the board.

Step 16



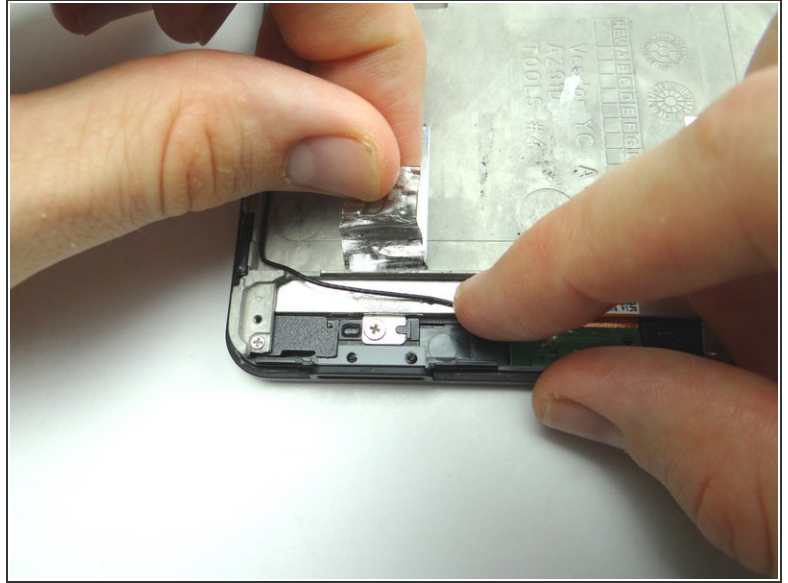
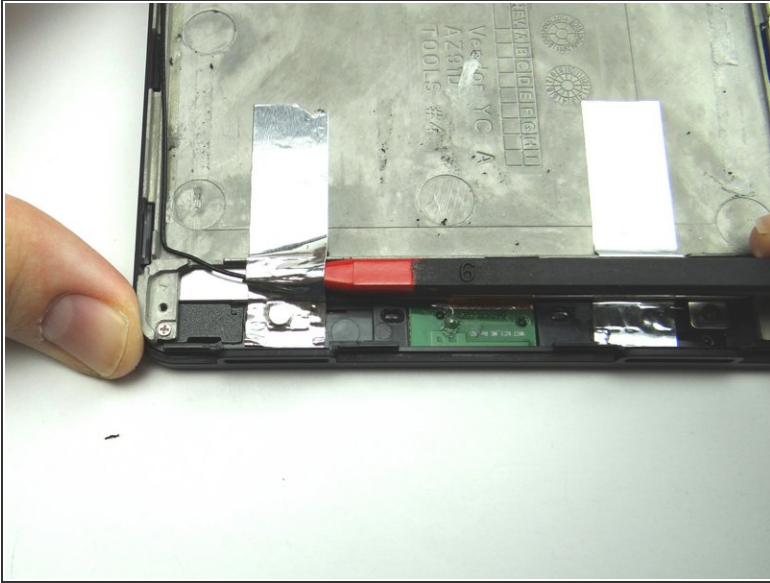
- Picture 1: Lift the bottom edge of the logic board while sliding the power button cable free.
- Picture 2: Carefully guide the charging port and headset jack (soldered to the bottom of the logic board) free.
- Picture 3: Lift the logic board away from the device. Place in ZONES II & III.

Step 17 — Removal 5 - Power Button Cable



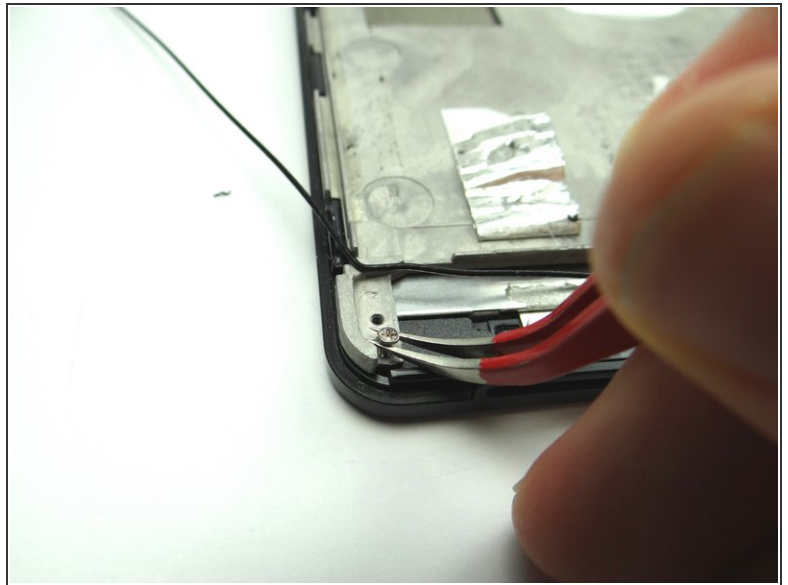
- Remove the 2.5 mm Phillips screw securing the power button cable. Place screw in SLOT 4.
- Peel up power button cable with your fingers and place in COMPARTMENT B.

Step 18 — Removal 6 - Mid-Plate



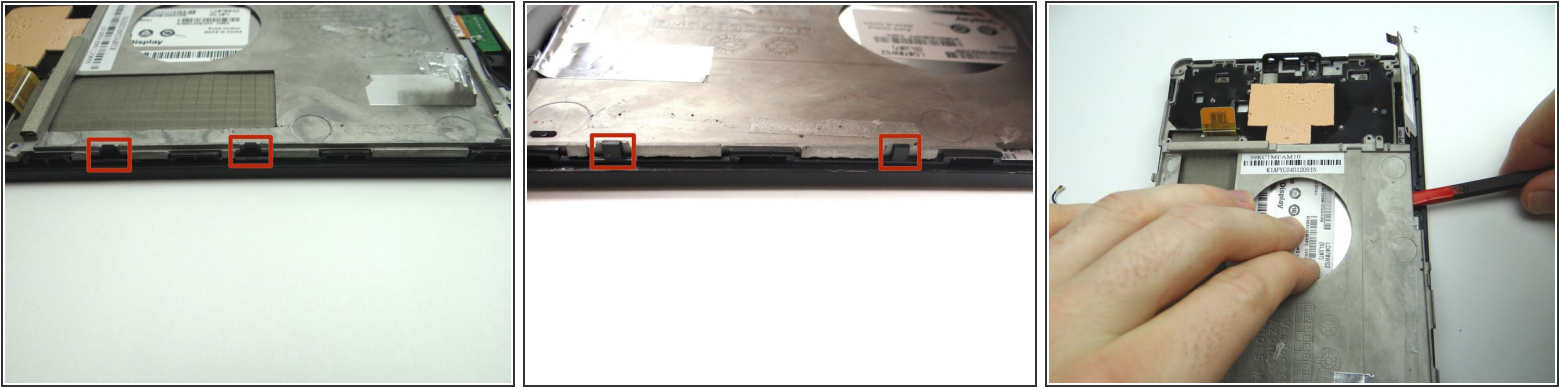
- Use the pointed end of the spudger to peel up silver tape securing antenna cable.
- Fold the tape out of the way.

Step 19



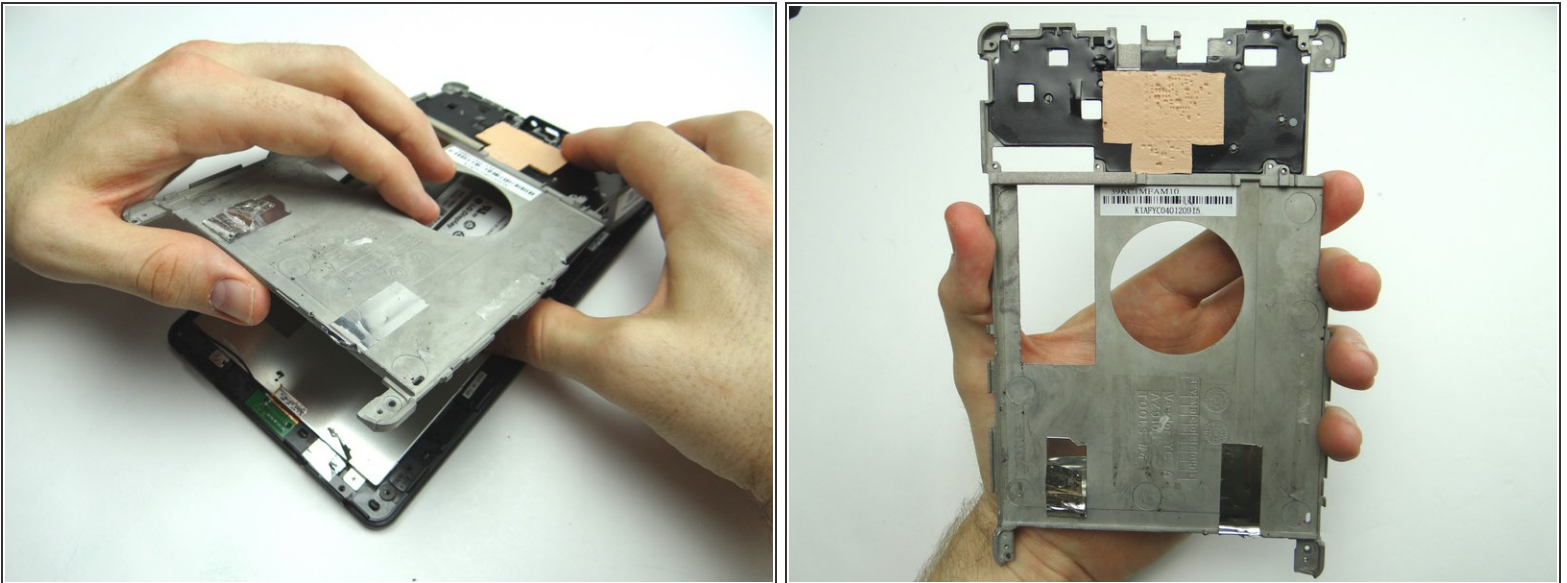
- Remove five 3.6 mm Phillips screws securing the mid-plate. Place in SLOT 5.
- Use curved-tip tweezers to finish pulling up the screws if they get stuck.

Step 20



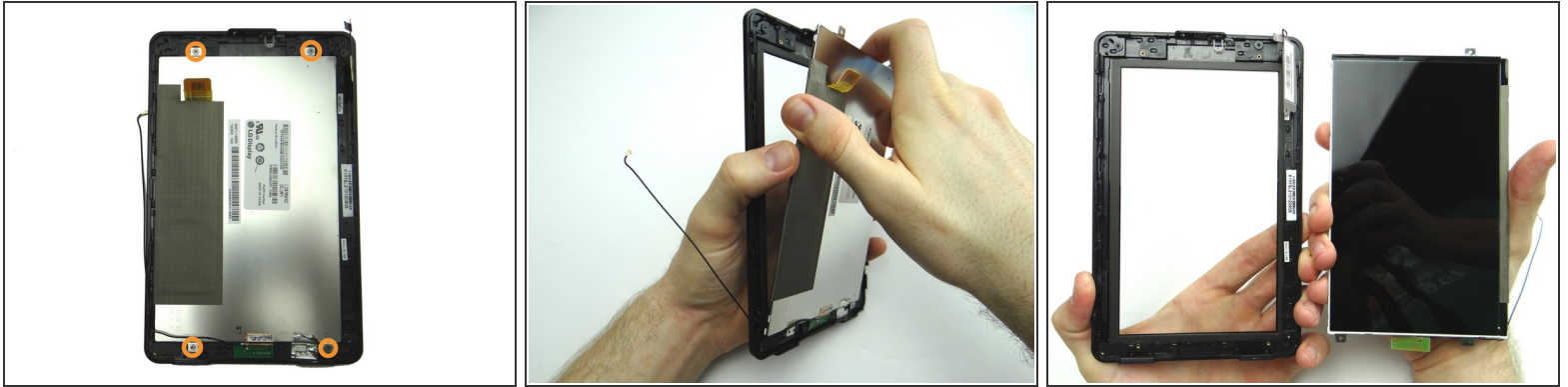
- Pictures 1 & 2: Clips on either side of the front panel hold the mid-plate in place.
- Picture 3: Wedge the flat end of the spudger between the mid-plate and front panel. Pry up the mid-plate using the spudger in your right hand while pulling up with your left.

Step 21



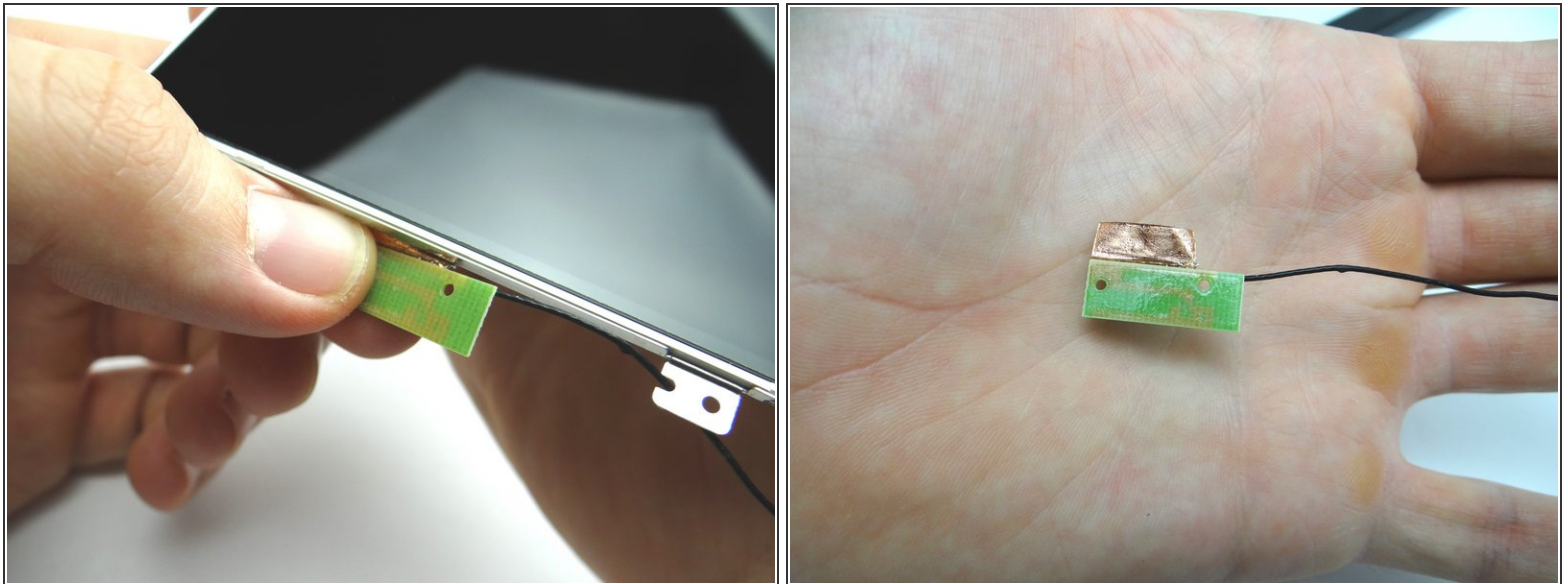
- Continue pulling up the mid-plate with your hands.
- Place in ZONE V.

Step 22 — Removal 7.2 - LCD



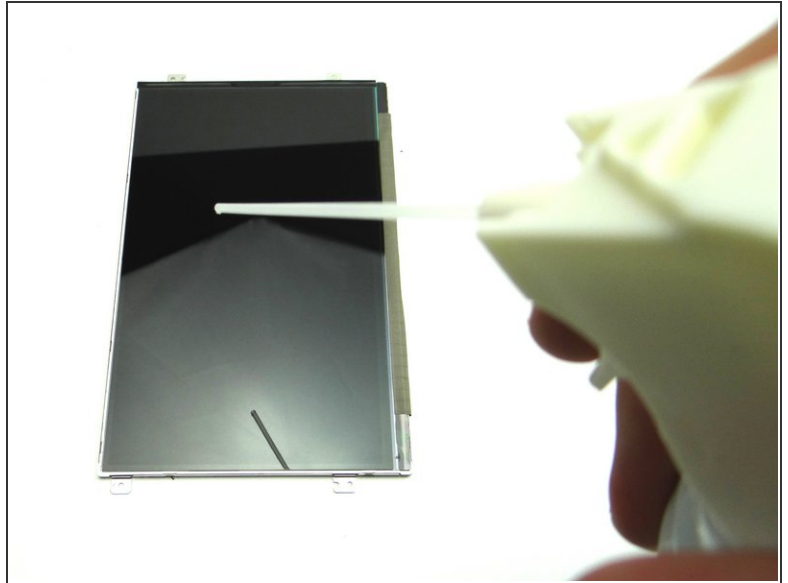
- Remove four 2.4 mm Phillips screws holding the LCD to the front glass frame. Place in SLOT 6.
- Separate the LCD from the front glass.

Step 23



- Peel antenna away from LCD with your fingers.
- Place in COMPARTMENT C.

Step 24 — Replacement 7.2 - LCD



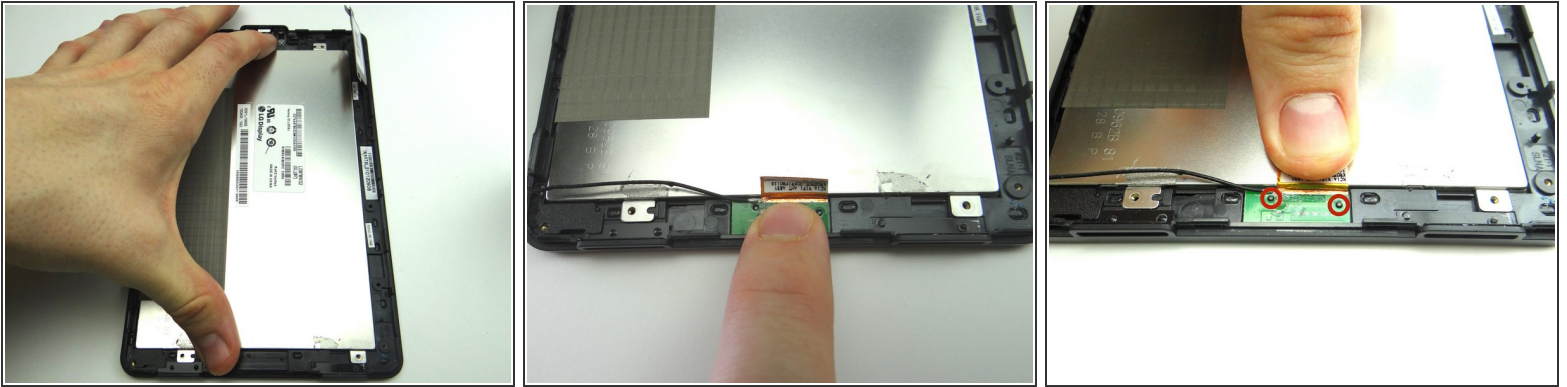
- Check the LCD for fingerprints or particulates. If necessary, clean with a chamois cloth and dust-off.

Step 25



- Clean the inside of the front glass with a chamois cloth and dust-off.

Step 26



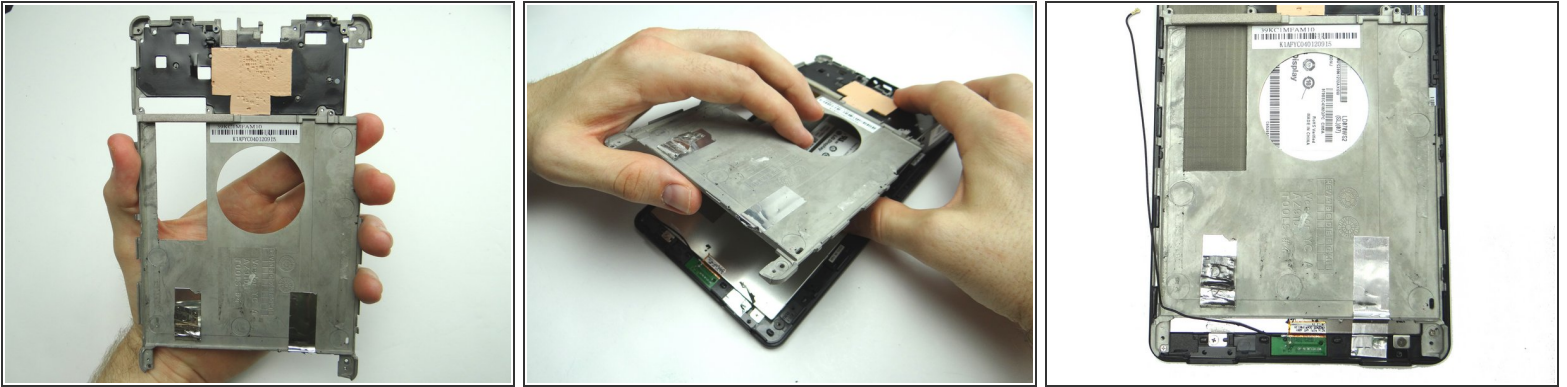
- Picture 1: Seat LCD in front glass frame.
- Pictures 2 & 3: From COMPARTMENT C, seat wifi antenna on front glass frame, lining up the holes in the antenna board with the tiny protrusions on the frame. Adhere antenna tape to back of LCD.

Step 27



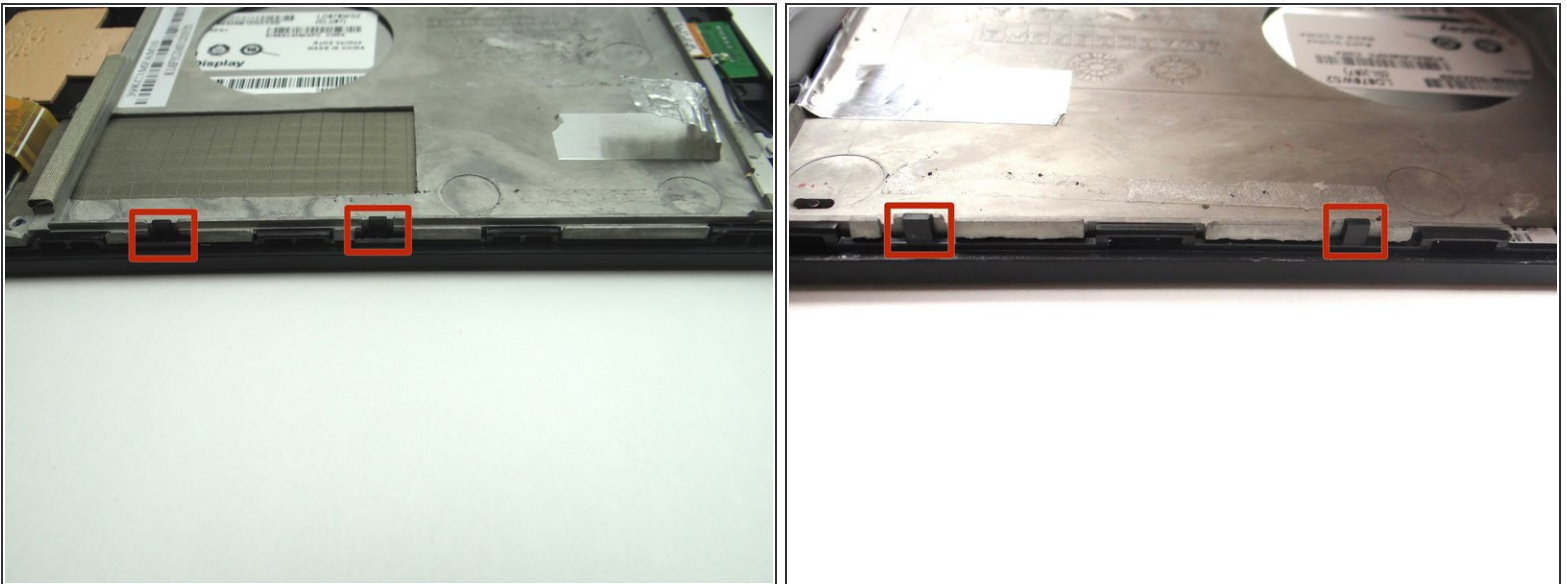
- From SLOT 6, replace four 2.4 mm Phillips screws holding the LCD to the front glass frame.

Step 28 — Replacement 6 - Mid-Plate



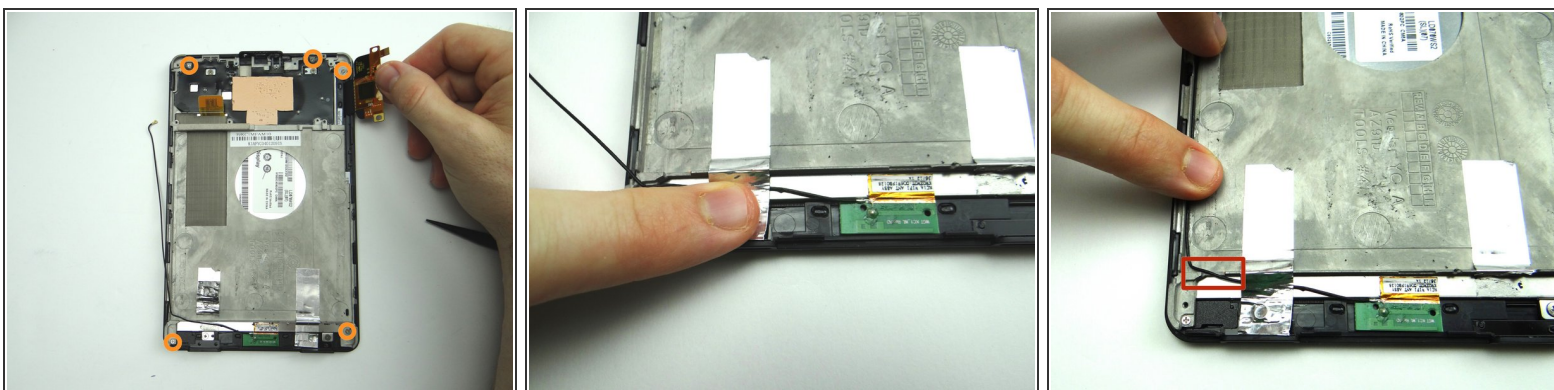
- From ZONE V, seat mid-plate on front panel.
- Make sure antenna cable is out of the way.

Step 29



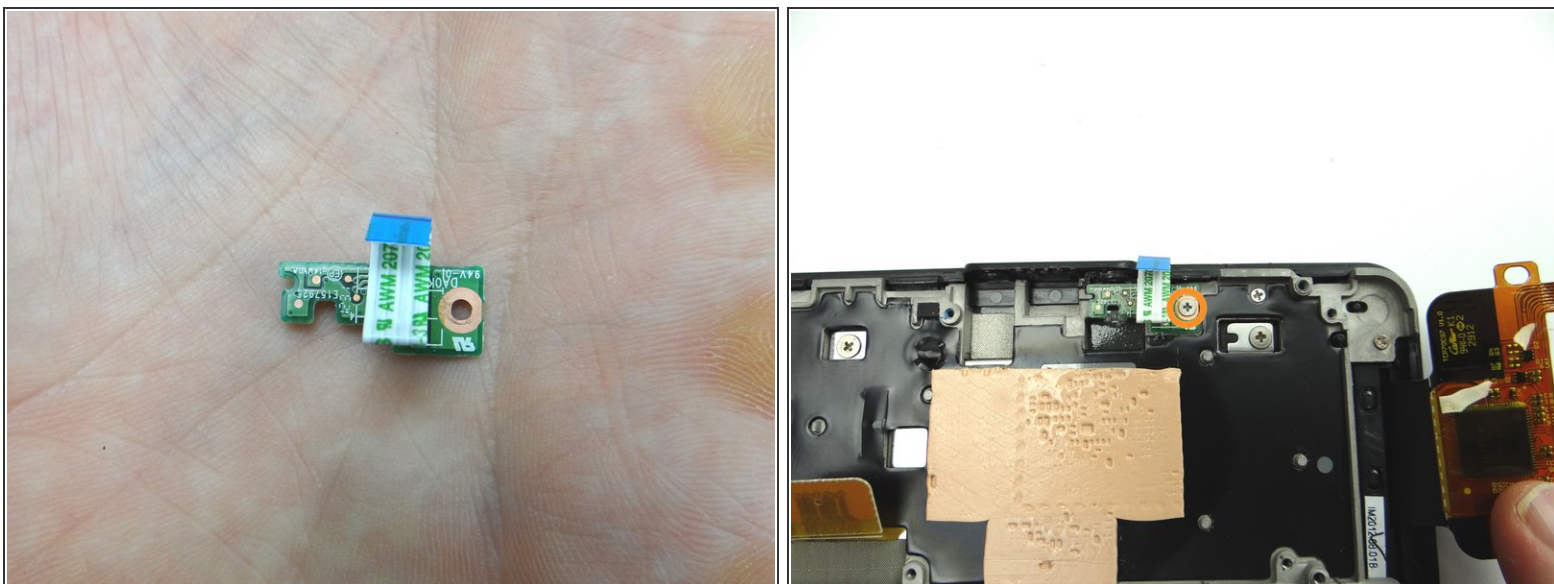
- Make sure the mid-plate is seated under the clips on the front panel.

Step 30



- Picture 1: From SLOT 5, replace the five 3.6 mm Phillips screws securing the mid-plate.
- Picture 2: Fold tape down on top of antenna cable.
- Picture 3: Place antenna cable along the left edge of the mid-plate. Note the placement of the cable through the notch inside the red square.

Step 31 — Replacement 5 - Power Button Cable



- Replace power button cable from COMPARTMENT B.
- From SLOT 4, replace the 2.5 mm Phillips screw to secure the power button cable.

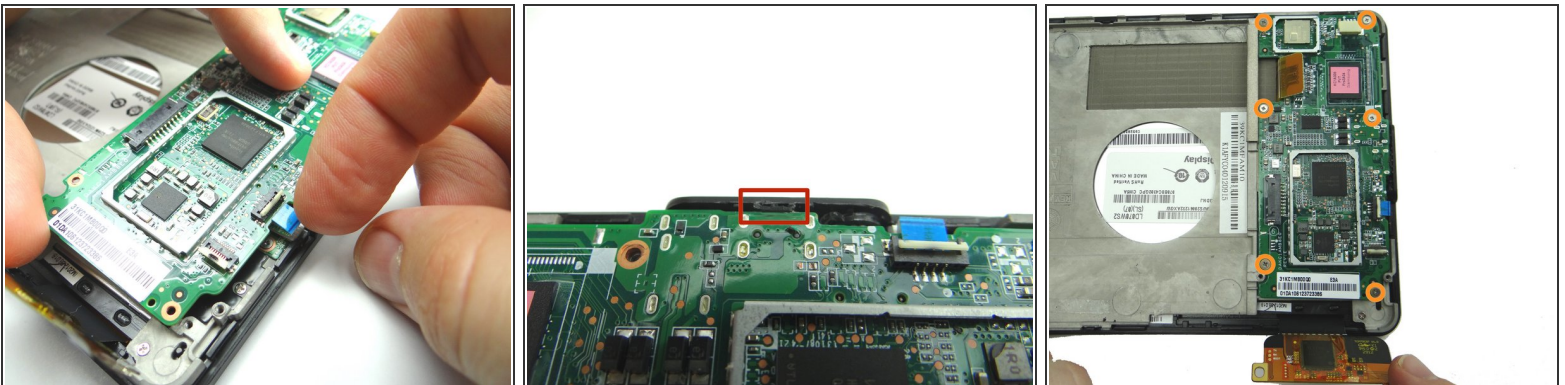
Step 32 — Replacement 4 - Logic Board



- Replace logic board from ZONES II & III. Guide the charging port and headset jack in first:
- Picture 1: Shows the charging port and headset jack on the bottom of the logic board.
- Picture 2: Shows the openings for the headset jack and charging port.
- Picture 3: Guide the charging port and headset jack in.

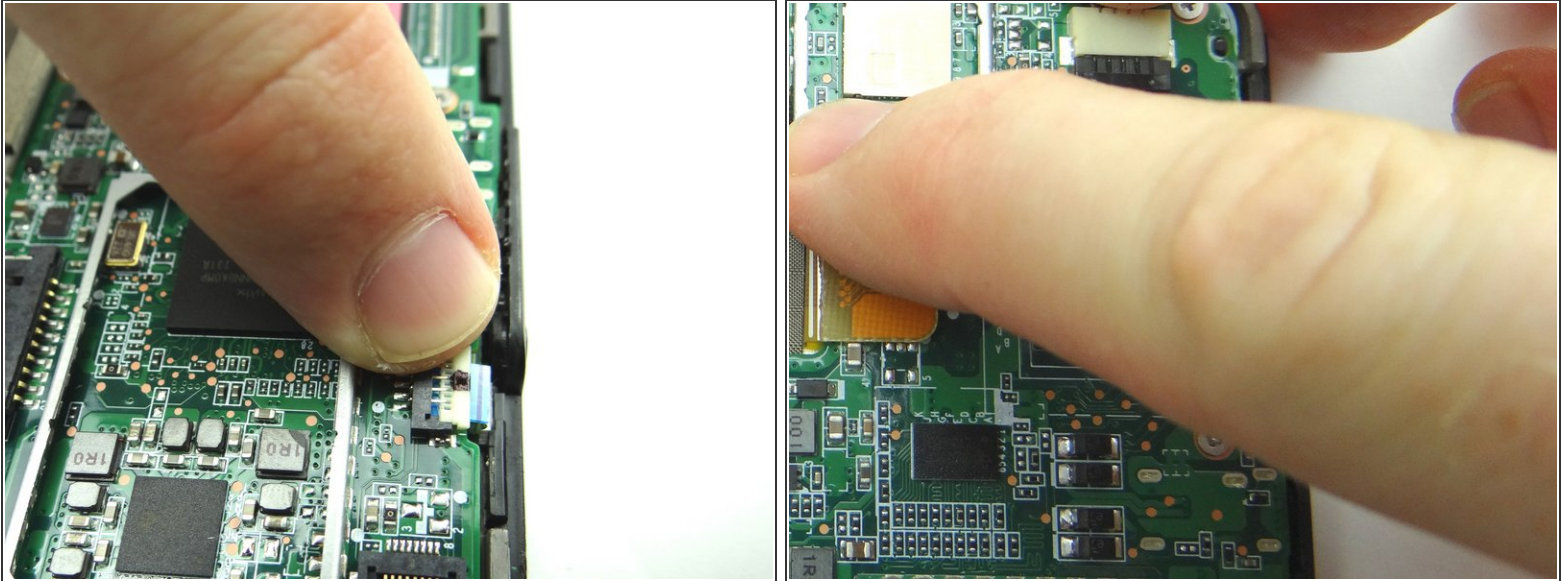
⚠ Make sure the power button cable doesn't get stuck under the logic board.

Step 33



- Pictures 1 & 2: Seat power button cable then gently push the logic board into place. Make sure the logic board is situated under the clip marked in Picture 2.
- Picture 3: From SLOT 3, replace six 2.6 mm Phillips screws.

Step 34



- Make sure power button cable is pushed in all the way. Close ZIF connector.
- Seat LCD cable.

Step 35



- Picture 1: Guide digitizer cable into ZIF connector.
- Picture 2: From SLOT 2, replace two 2.3 mm Phillips screws to secure the digitizer cable.
- Picture 3: Close ZIF connector.

Step 36 — Replacement 3 - Battery



- Seat the battery from ZONE V while guiding the battery connector into its socket.
- Push connector in until it snaps into place.

Step 37



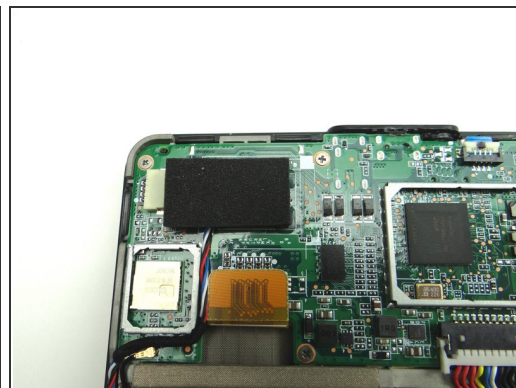
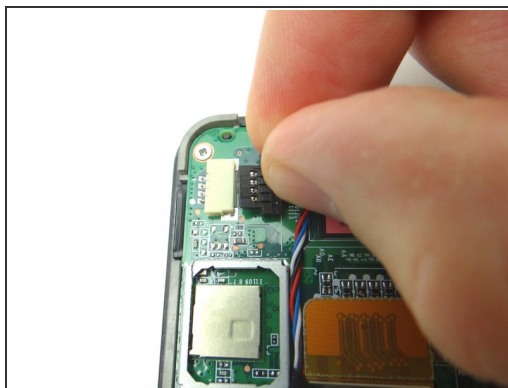
- Thread antenna along the left edge of the battery.
- Seat antenna on logic board.

Step 38 — Replacement 2 - Loudspeaker



- Replace speaker assembly from ZONE I.
- Replace two 3.3 mm Phillips #00 screws securing the speaker assembly from SLOT 1.

Step 39



- Picture 1: Thread speaker cable through the track just left of the battery.
- Picture 2: Push speaker cable connector into place.
- Replace foam tape from COMPARTMENT A.

Step 40 — Replacement 1 - Battery Cover



- From ZONE V, secure the battery cover to the Kindle.
- Start with the two tabs on either side of the charging port.

Step 41



- Push the bottom into place and work your way to the top.

Step 42



- Power up the device and test the replacement part or parts.