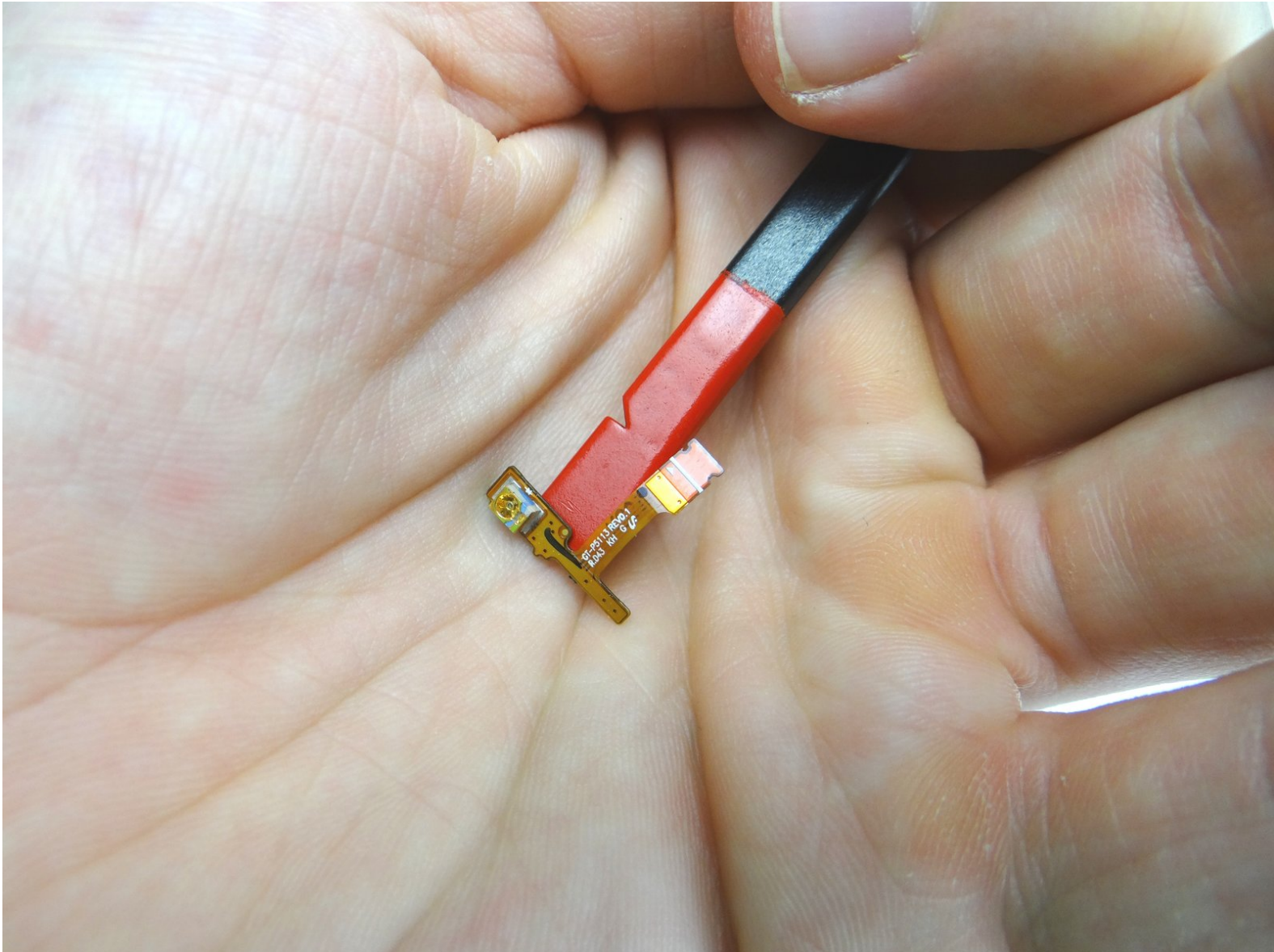


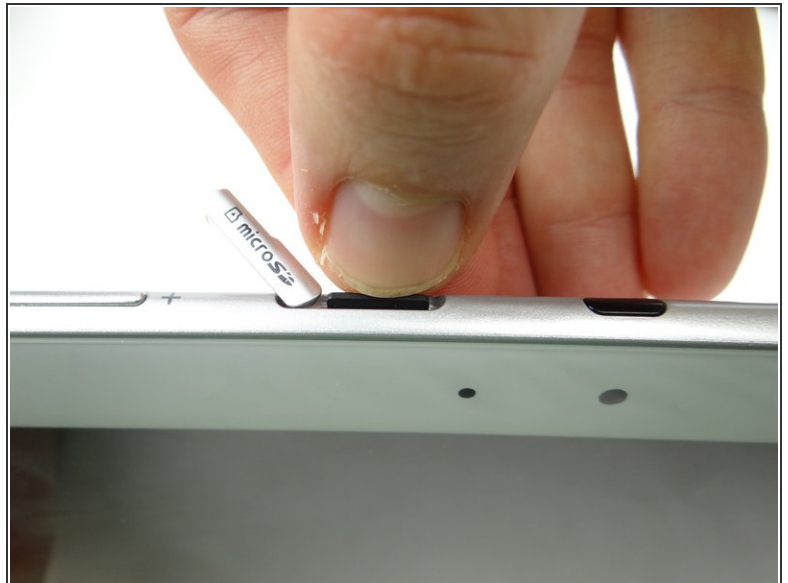
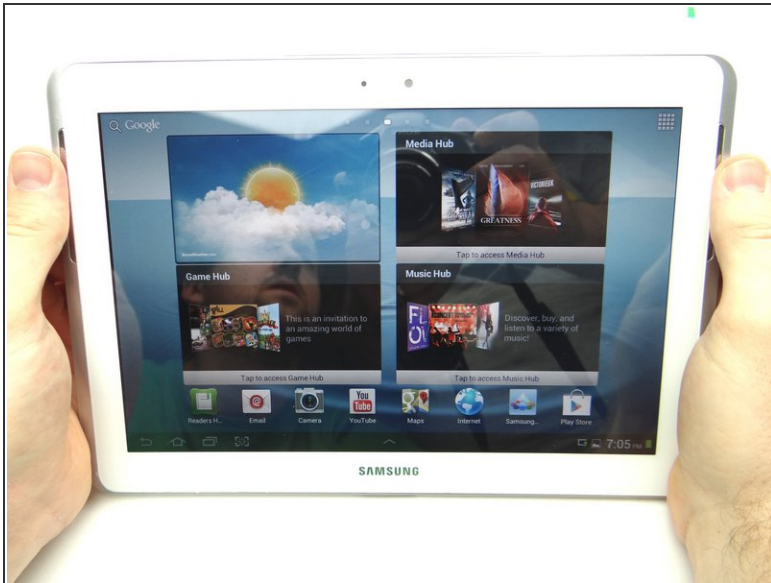
CELLPHONESANDBOX

Manual 03 - Infrared Sensor

Written By: James Linder

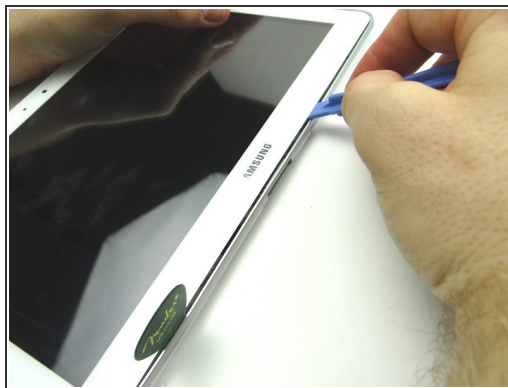
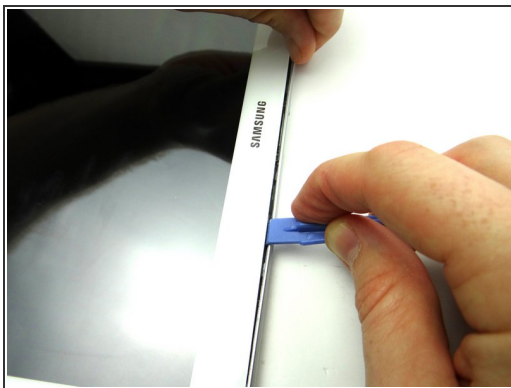


Step 1 — Removal 1 - Rear Case



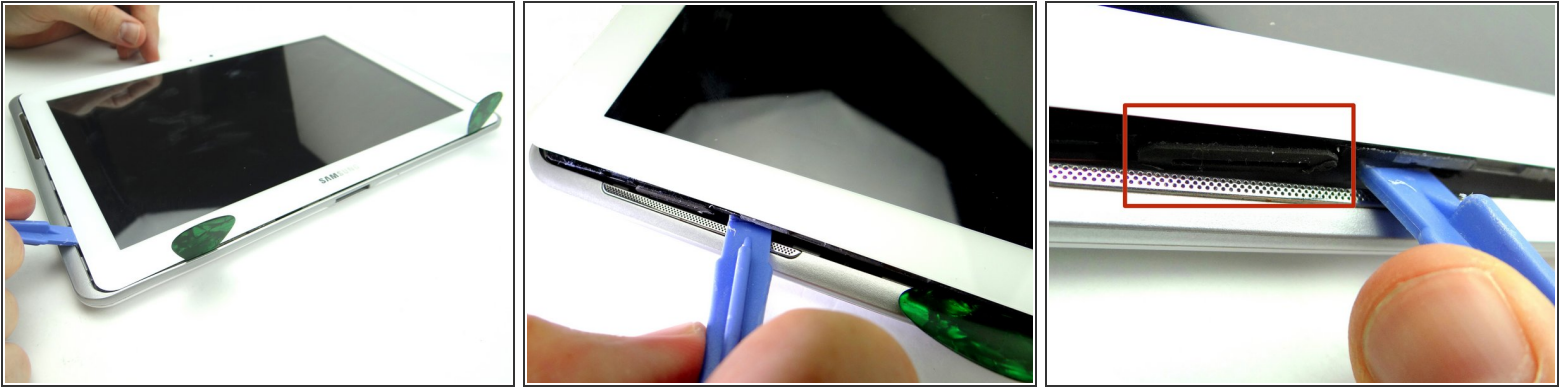
- Power down the device.
- Remove SD card and place in COMPARTMENT A.

Step 2 — Free several clips holding rear case to front panel:



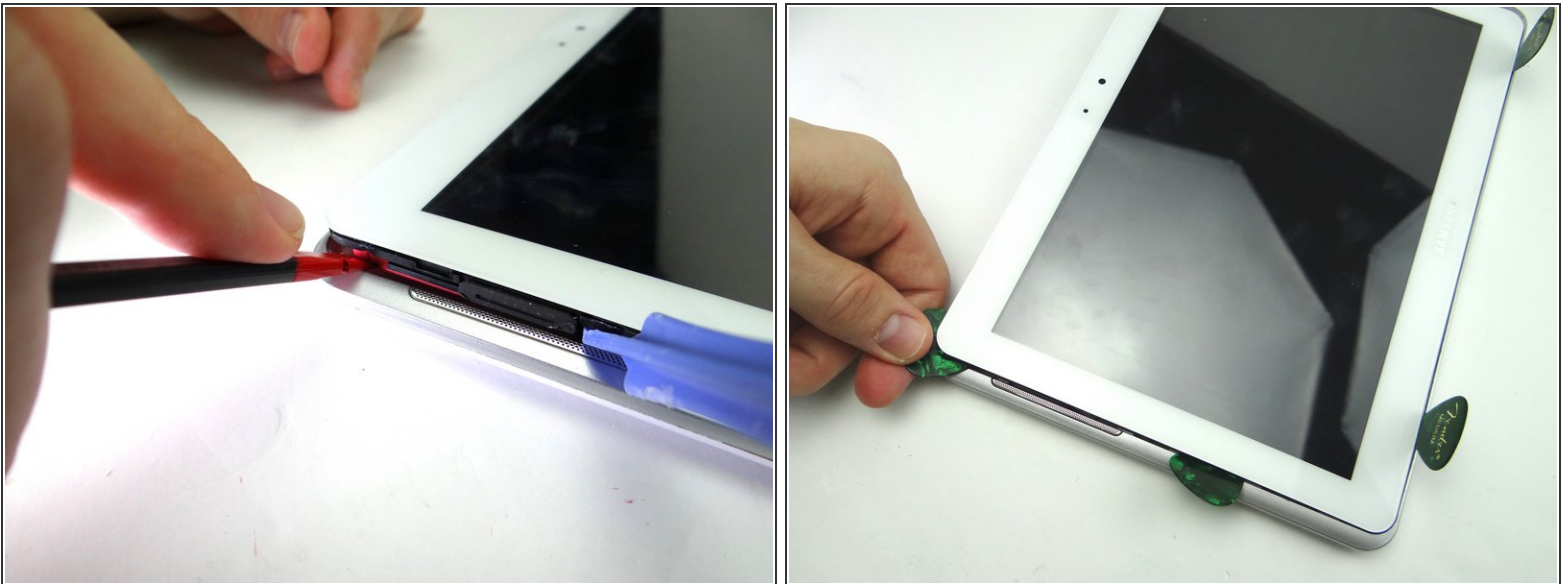
- Pictures 1 & 2: Insert a wide blue pry tool between the rear case and front panel at the bottom of the tablet, an inch left of the Samsung logo. Sweep left, then insert a guitar pick to hold the left side open. Work your way right with the blue pry tool.
- Picture 3: Insert a guitar pick to hold the right side open.

Step 3



- Picture 1: Insert the blue pry tool in the lower-left corner.
- Picture 2: Work your way up to the speaker. Insert a guitar pick an inch below the speaker.
- Picture 3: Continue prying up until you can see the rubber piece on the speaker (red square).

Step 4



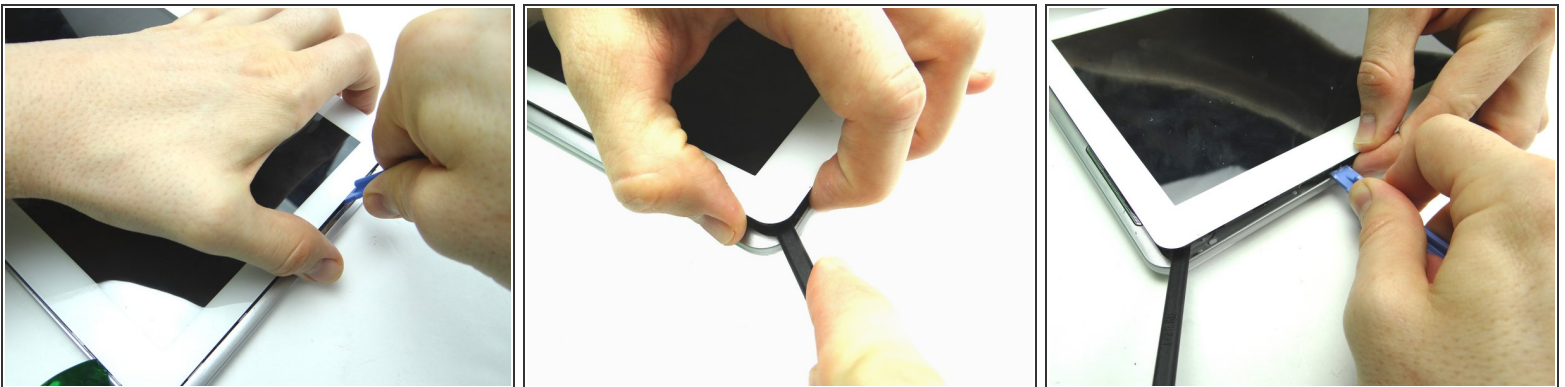
- Picture 1: Use spudger to pry up upper-left corner under the pink speaker.
- Picture 2: Put a guitar pick in place of the spudger to hold the upper-left corner open.

Step 5



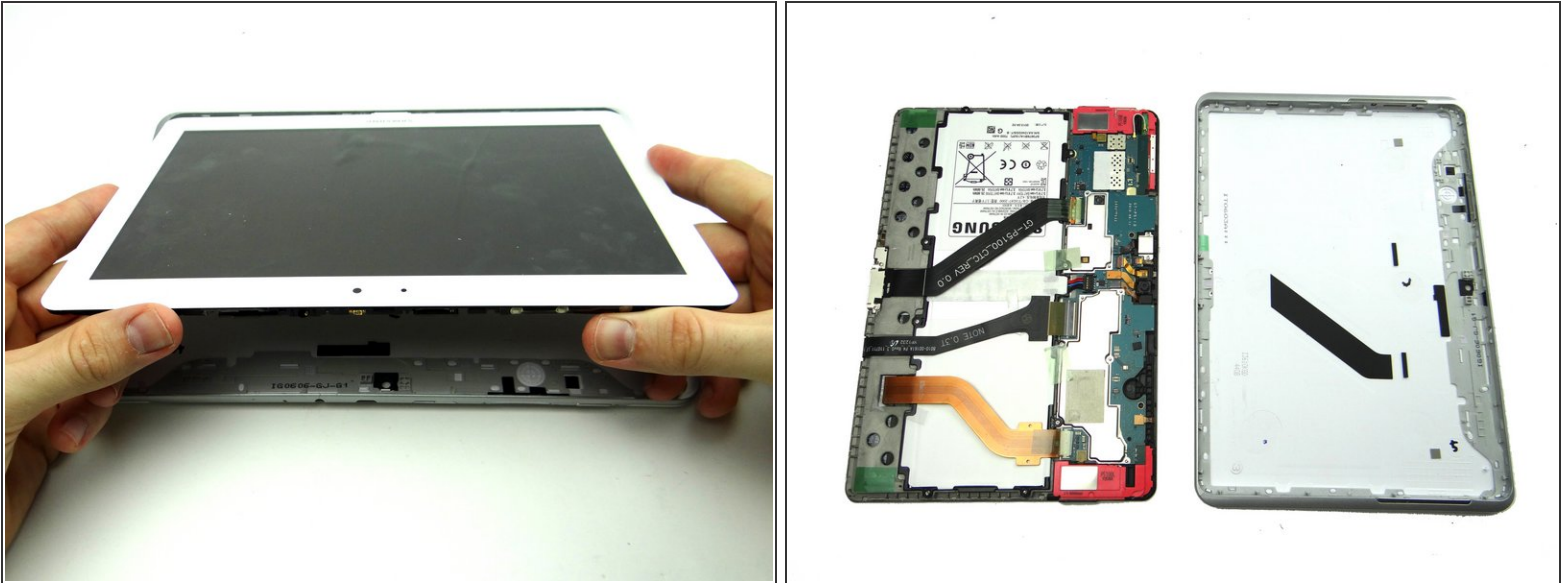
- Picture 1: Insert the blue pry tool in the lower-right corner.
- Picture 2: Slowly work your way up with the blue pry tool, pivoting the front panel slightly up from the rear case.
- Picture 3: Create just enough space to hold the front panel just above the rear case with your fingers.

Step 6



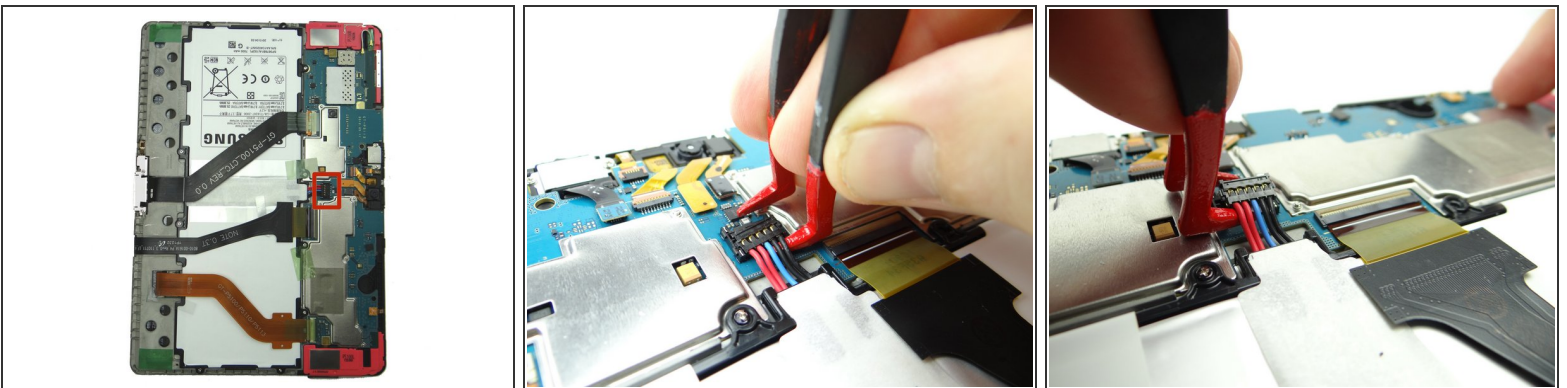
- Pictures 1 & 2: Continue lifting the upper-right corner until you can wedge the flat end of a spudger in the upper-right corner to hold it open.
- Picture 3: Sweep across the top with the blue pry tool, while gently pulling up the front panel with your fingers.

Step 7



- Remove the blue pry tools, then pivot the top edge of the front panel above the rear case.
- Once the top edge reaches a 45° angle, pull it away from the rear case.

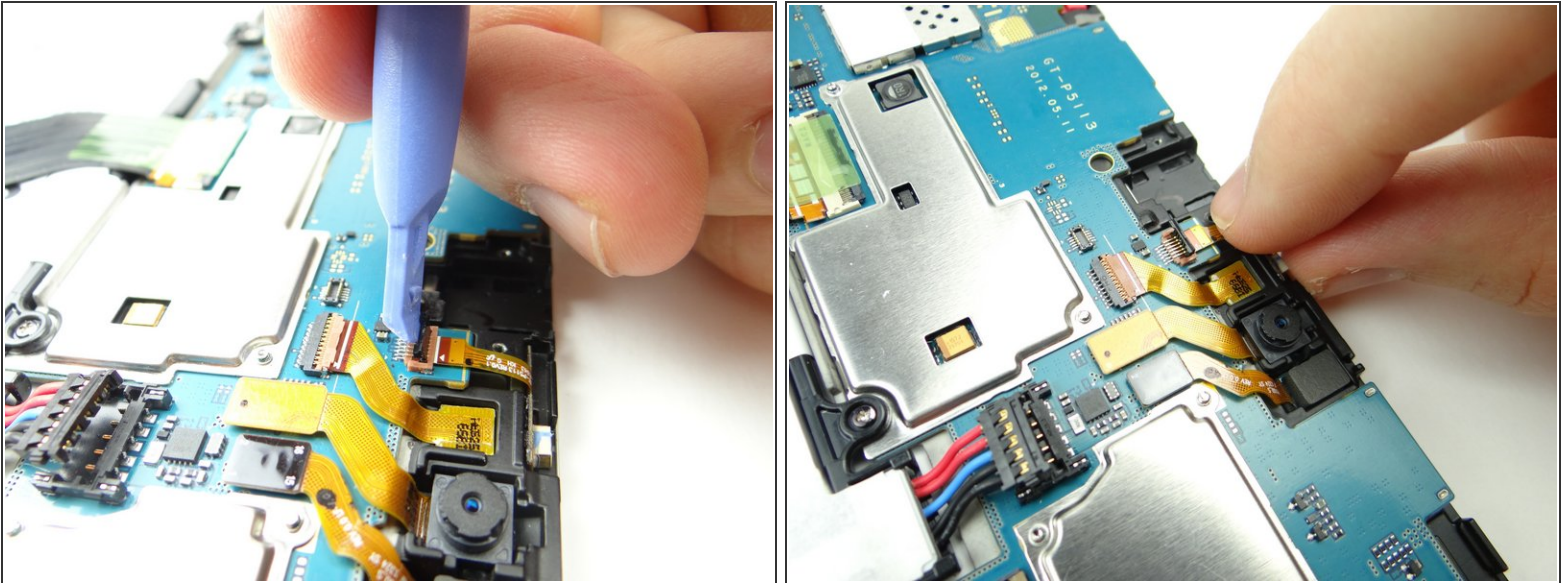
Step 8 — Removal 2.0 - Disconnect Battery



⚠ Battery cable head is fragile:

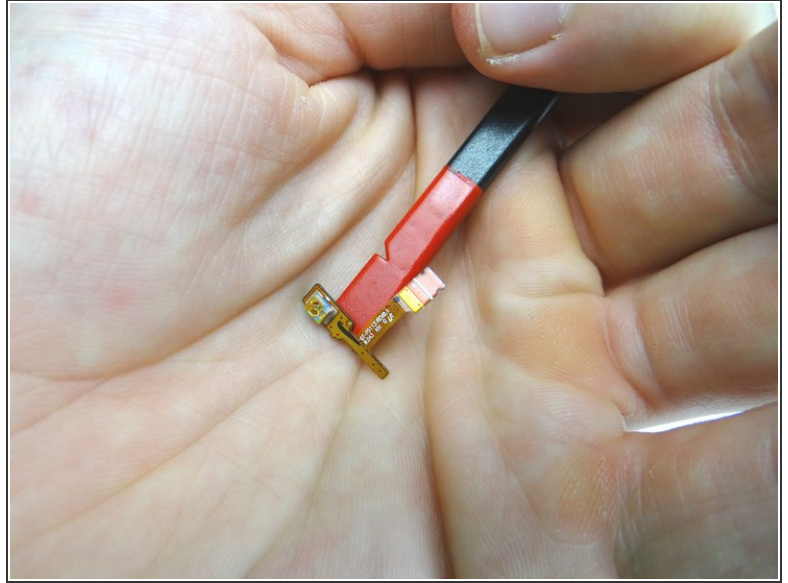
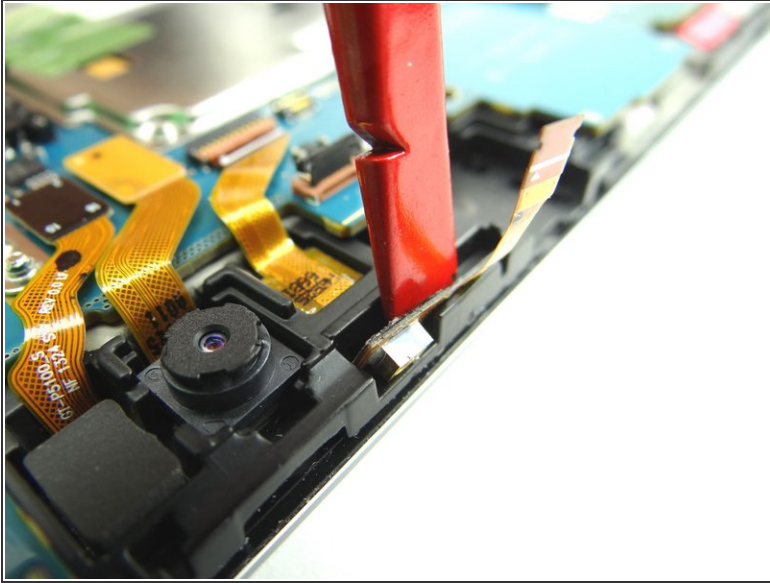
- Use one prong of the plastic tweezers to wedge under the right side of the battery connector and pull it up slightly.
- Lift battery connector straight up from the left side to dislodge it.


Step 9 — Removal 2.2 - Infrared



- Use blue pry tool to open ZIF connector holding the infrared sensor cable.
- With the ZIF connector open, use your finger to pull the cable free.

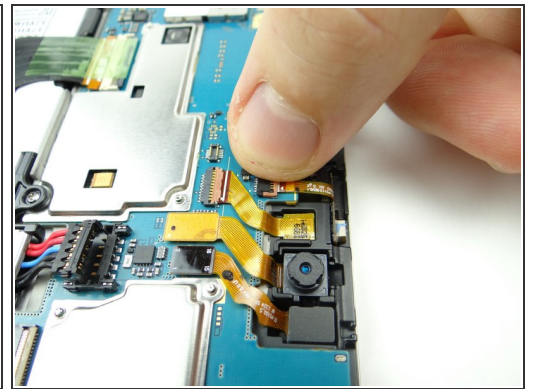
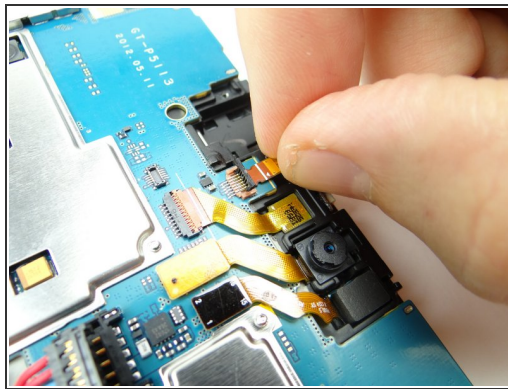
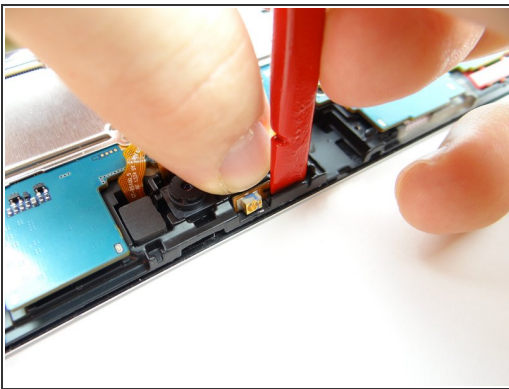
Step 10



 Adhesive holds the infrared cable in place:

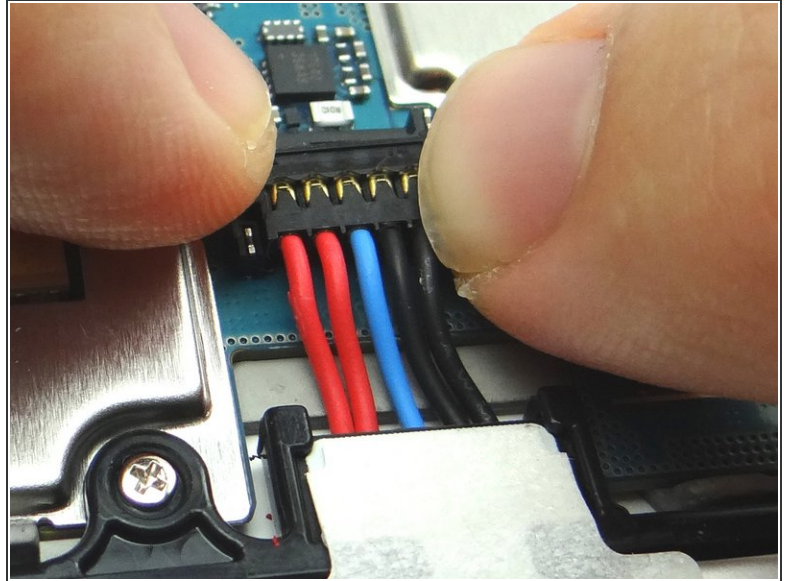
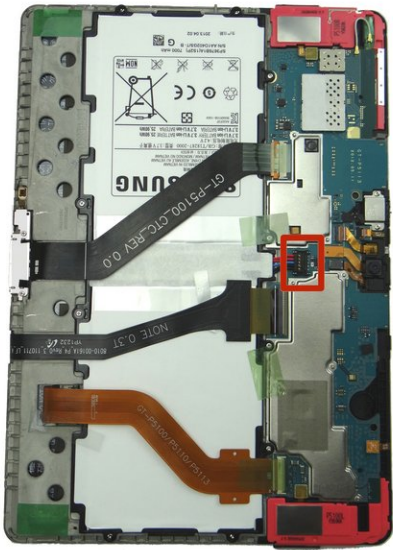
- Use the flat end of the spudger to separate the cable from the frame.
- Place in COMPARTMENT C.

Step 11 — Replacement 2.2 - Infrared



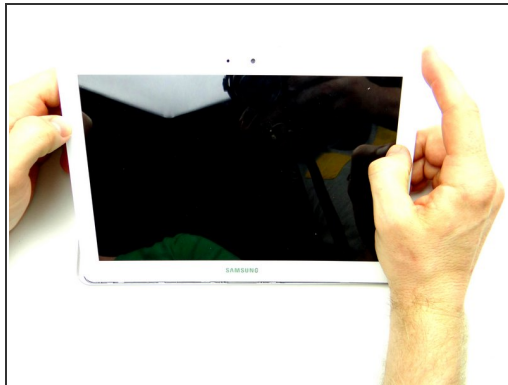
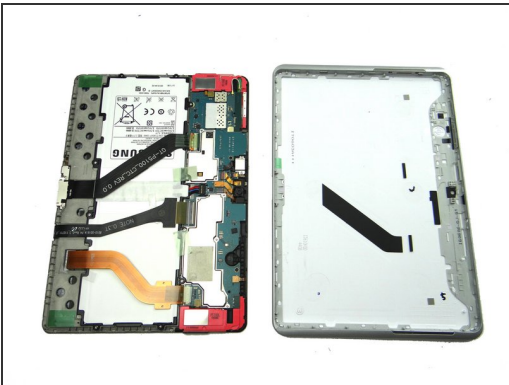
- Picture 1: Replace infrared sensor from COMPARTMENT C. Use flat end of spudger to push infrared cable against the mid-frame wall.
- Push cable into open ZIF connector.
- Close ZIF connector.

Step 12 — Replacement 2.0 Connect Battery



- Push battery connector straight down into its socket.

Step 13 — Replacement 1 - Rear Case



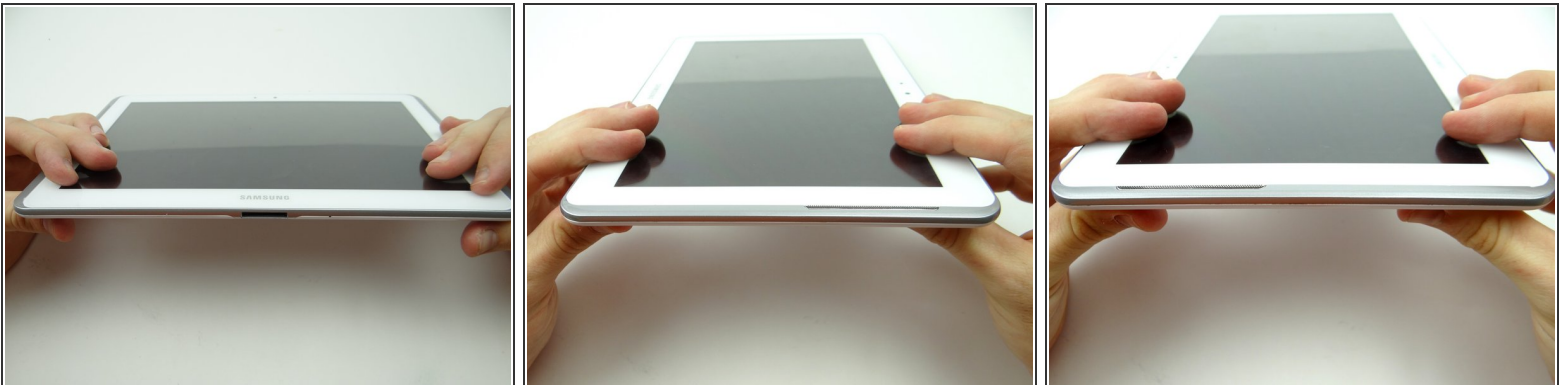
- Seat front panel on rear case, charging port first.
- Push center clips into place.

Step 14



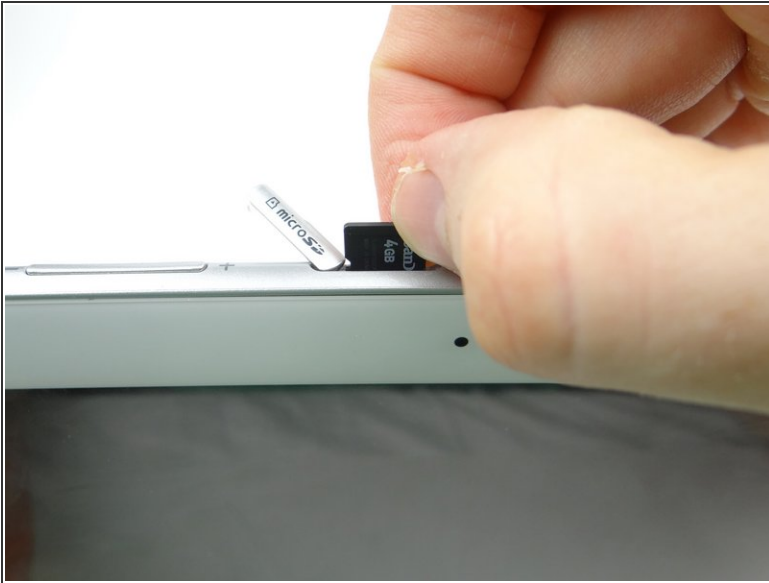
- Picture 1: Press charging port clips into place.
- Picture 2: Press clips in top corner into place.
- Picture 3: Turn tablet over and continue pressing clips into place.

Step 15



- Examine all edges to ensure all clips are seated and the display is flush with the rear case.

Step 16



- Replace SD card from COMPARTMENT A.
- Power up and test device.