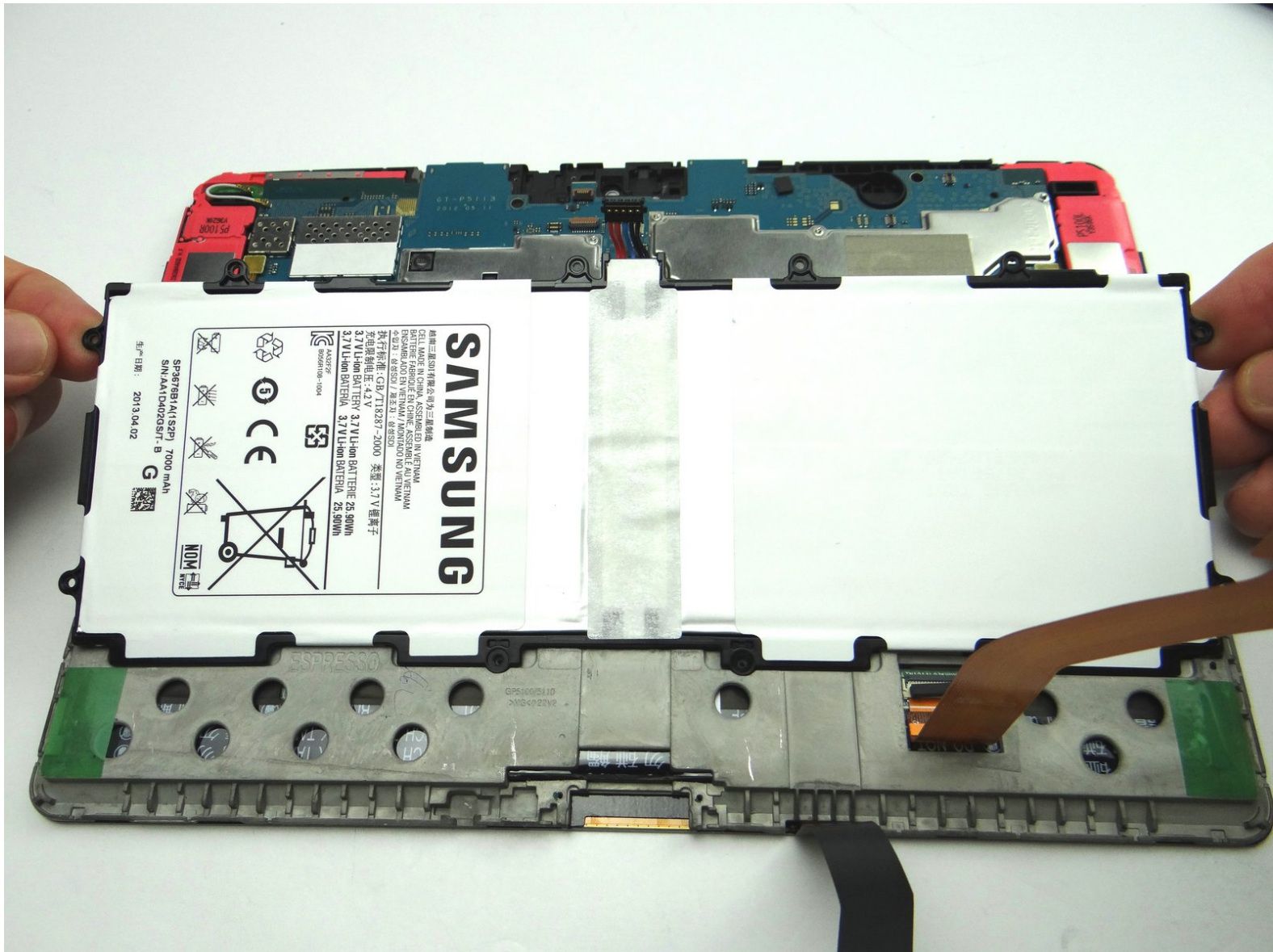


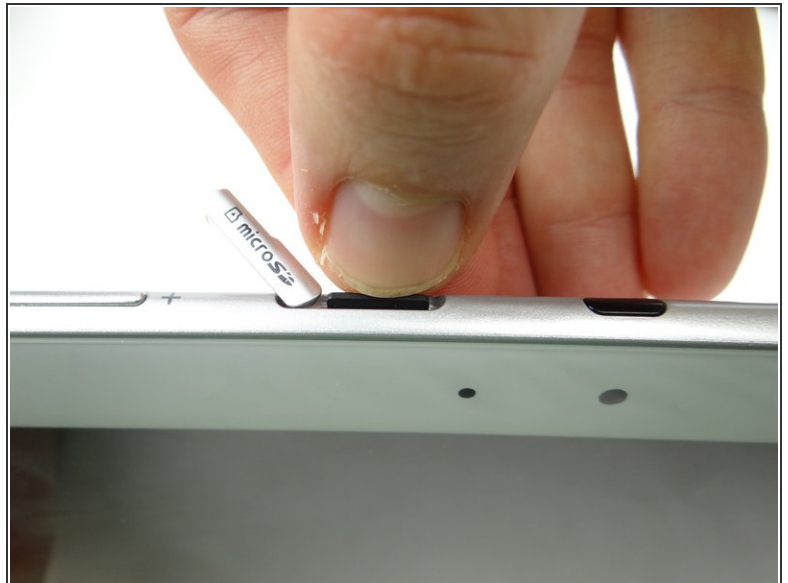
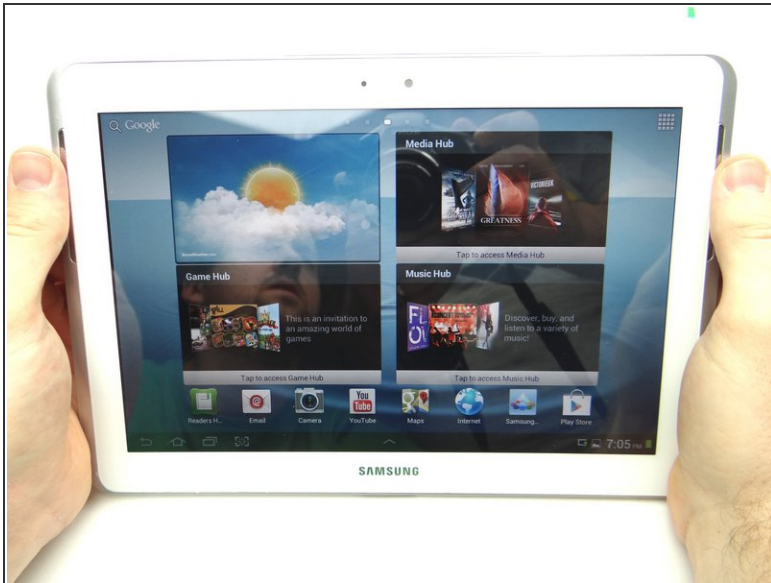
CELLPHONESANDBOX

Manual 10 - Battery

Written By: James Linder

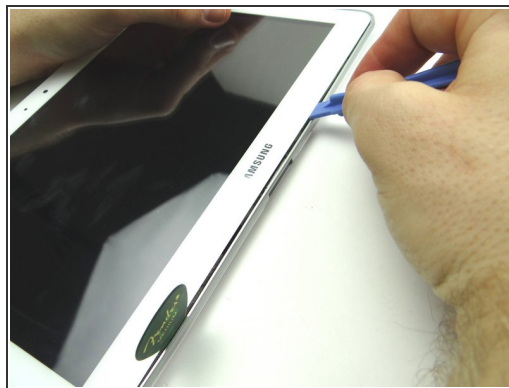
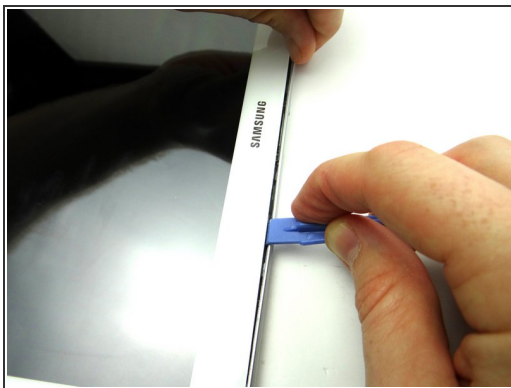


Step 1 — Removal 1 - Rear Case



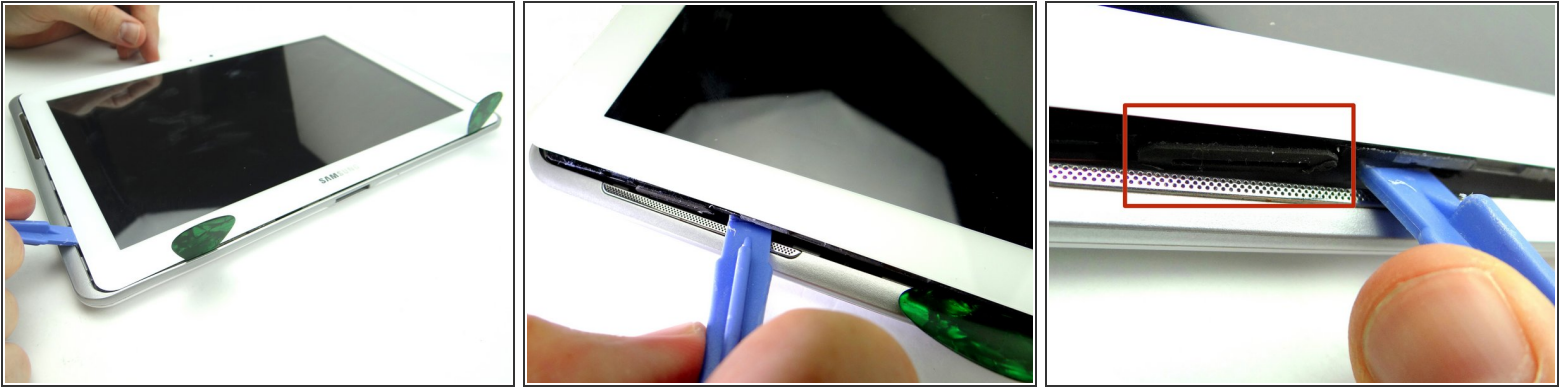
- Power down the device.
- Remove SD card and place in COMPARTMENT A.

Step 2 — Free several clips holding rear case to front panel:



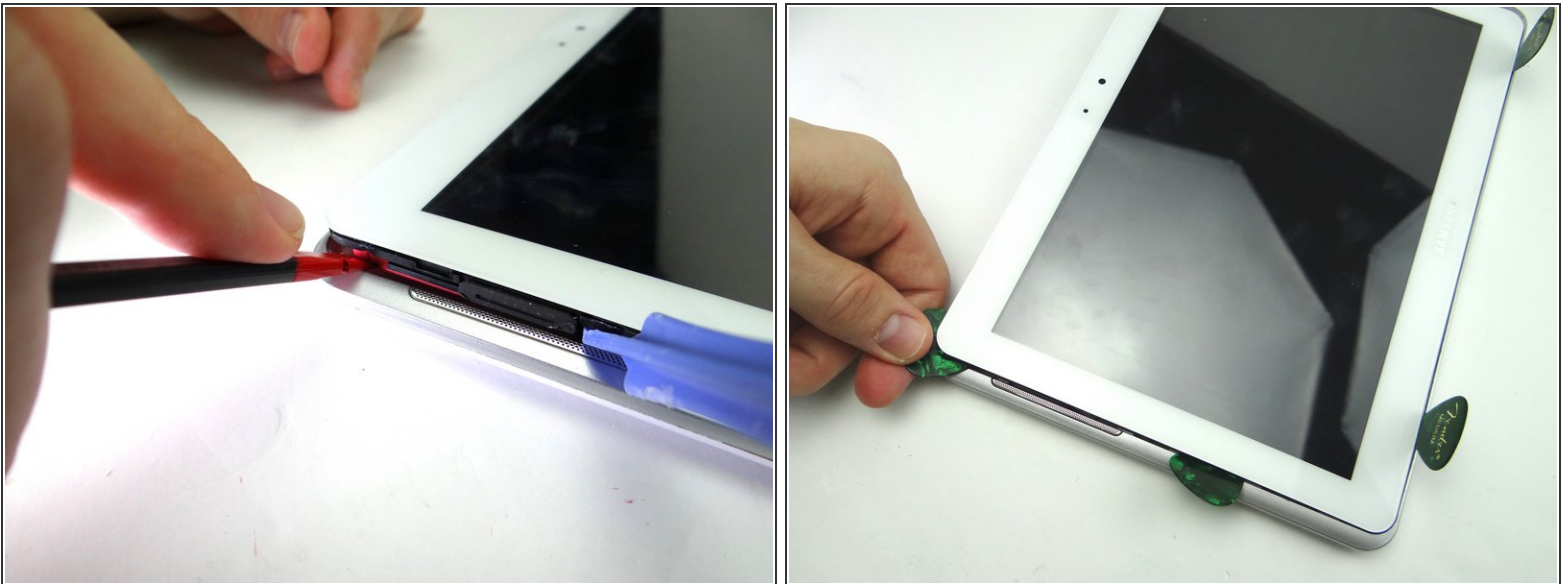
- Pictures 1 & 2: Insert a wide blue pry tool between the rear case and front panel at the bottom of the tablet, an inch left of the Samsung logo. Sweep left, then insert a guitar pick to hold the left side open. Work your way right with the blue pry tool.
- Picture 3: Insert a guitar pick to hold the right side open.

Step 3



- Picture 1: Insert the blue pry tool in the lower-left corner.
- Picture 2: Work your way up to the speaker. Insert a guitar pick an inch below the speaker.
- Picture 3: Continue prying up until you can see the rubber piece on the speaker (red square).

Step 4



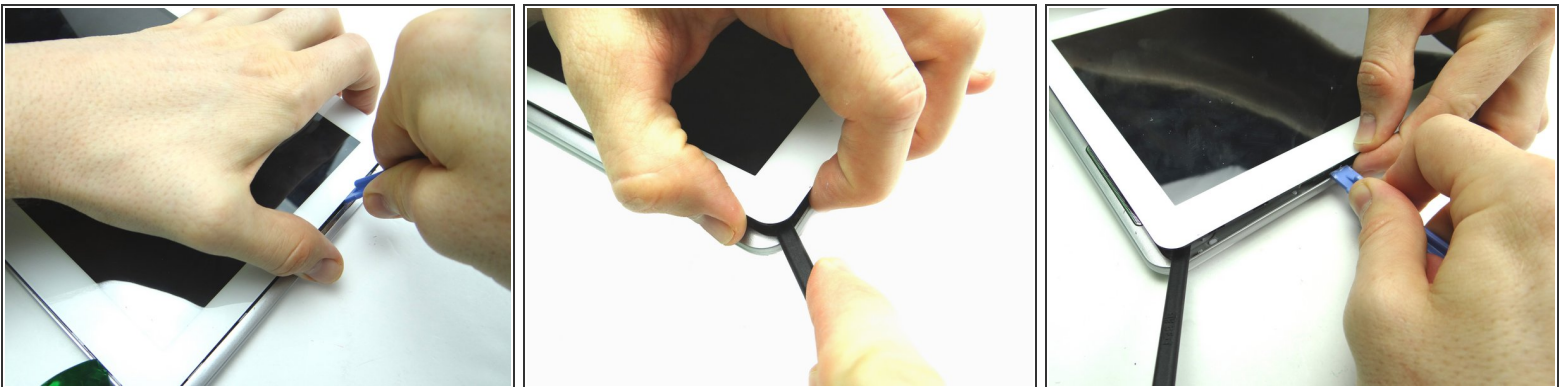
- Picture 1: Use spudger to pry up upper-left corner under the pink speaker.
- Picture 2: Put a guitar pick in place of the spudger to hold the upper-left corner open.

Step 5



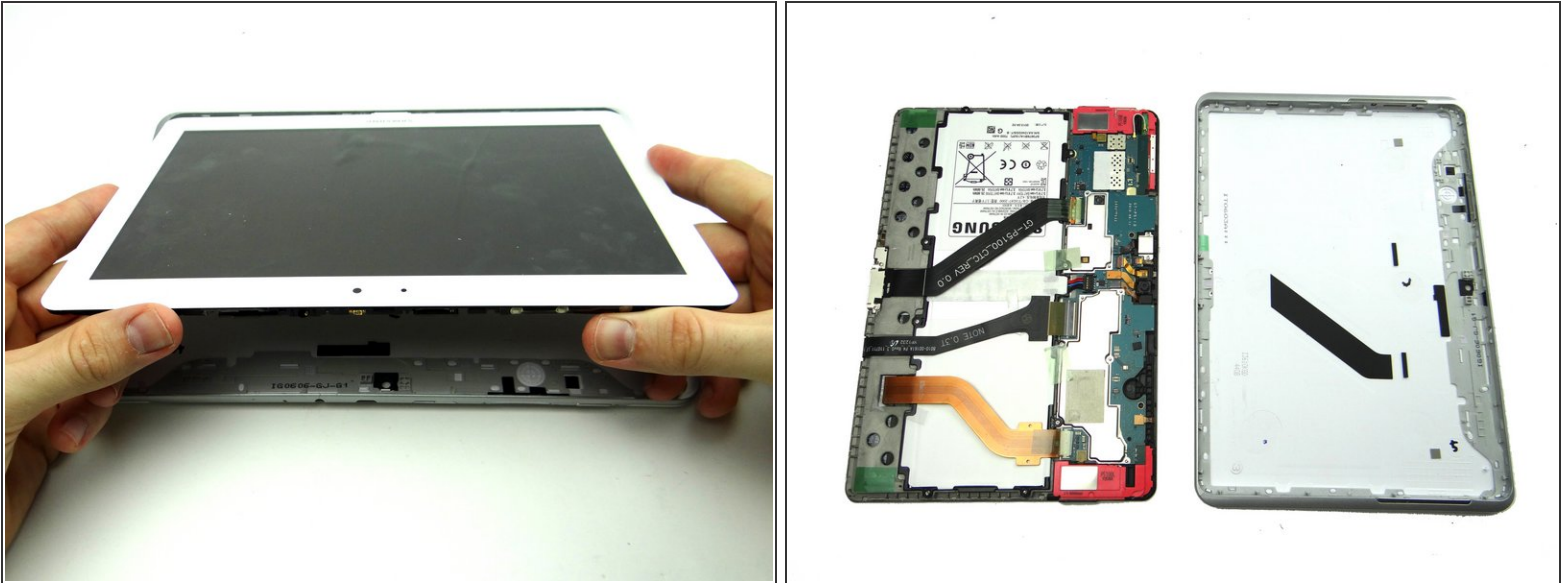
- Picture 1: Insert the blue pry tool in the lower-right corner.
- Picture 2: Slowly work your way up with the blue pry tool, pivoting the front panel slightly up from the rear case.
- Picture 3: Create just enough space to hold the front panel just above the rear case with your fingers.

Step 6



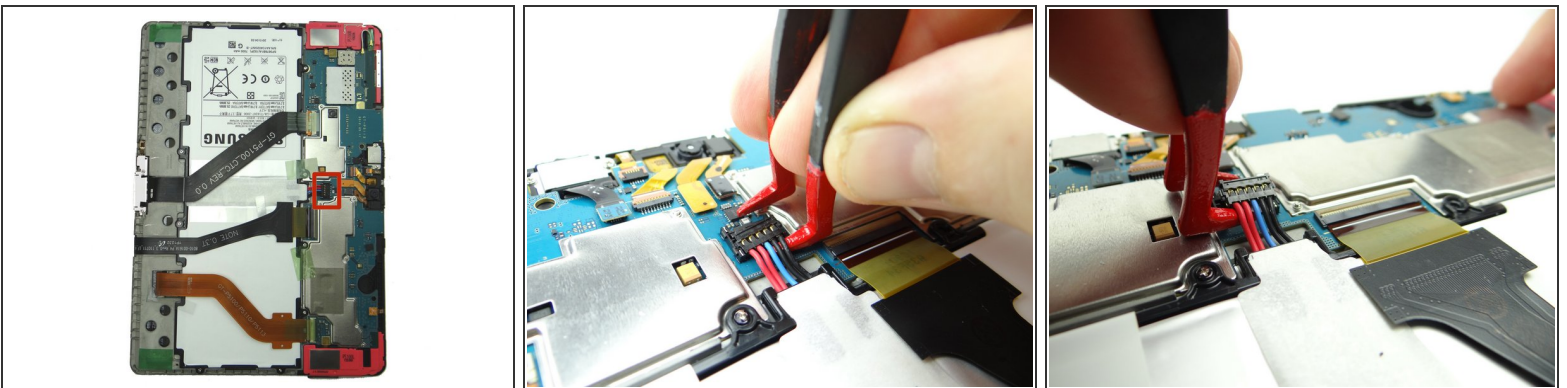
- Pictures 1 & 2: Continue lifting the upper-right corner until you can wedge the flat end of a spudger in the upper-right corner to hold it open.
- Picture 3: Sweep across the top with the blue pry tool, while gently pulling up the front panel with your fingers.

Step 7



- Remove the blue pry tools, then pivot the top edge of the front panel above the rear case.
- Once the top edge reaches a 45° angle, pull it away from the rear case.

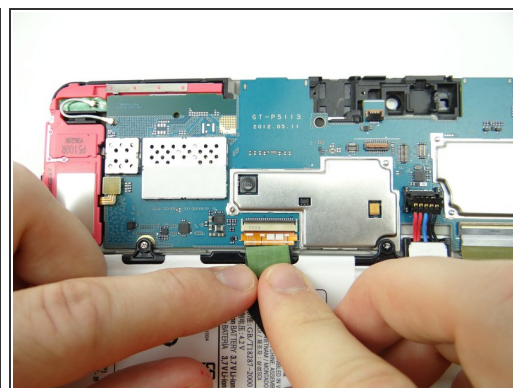
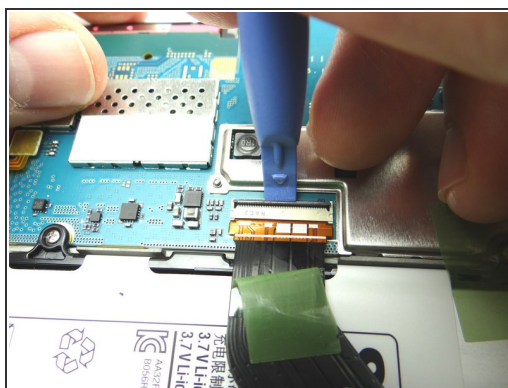
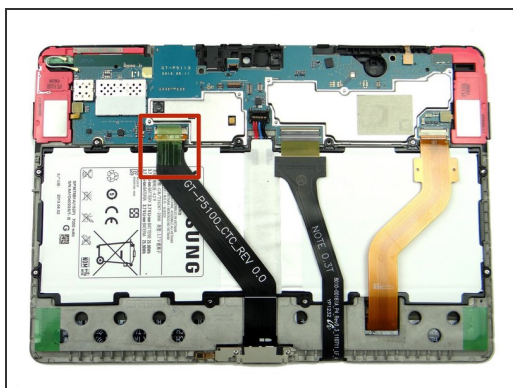
Step 8 — Removal 2.0 - Disconnect Battery



⚠ Battery cable head is fragile:

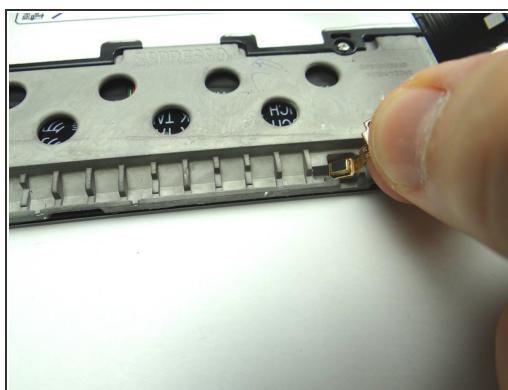
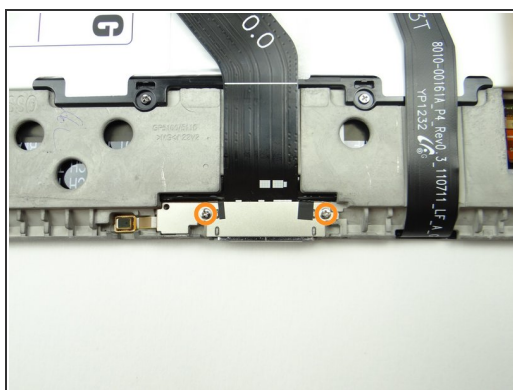
- Use one prong of the plastic tweezers to wedge under the right side of the battery connector and pull it up slightly.
- Lift battery connector straight up from the left side to dislodge it.

Step 9 — Removal 2.8 - Charging Port Cable / Microphone



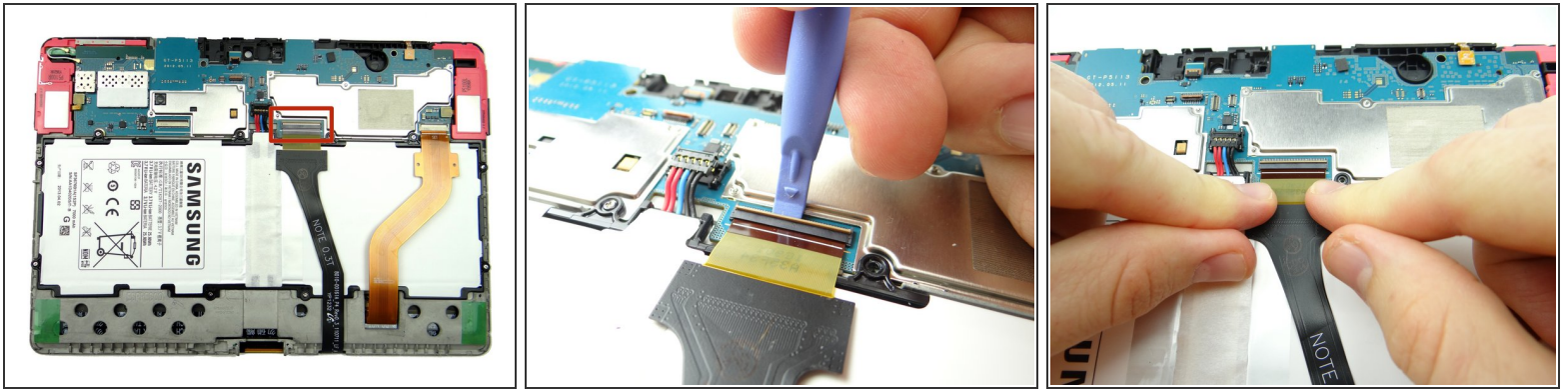
- Picture 1: Peel tape up from connector and fold it back. Don't discard it - leave it attached to the cable.
- Picture 2: Use blue pry tool to lift ZIF connector black bar into open position.
- Picture 3: Slide cable out with your fingers.

Step 10



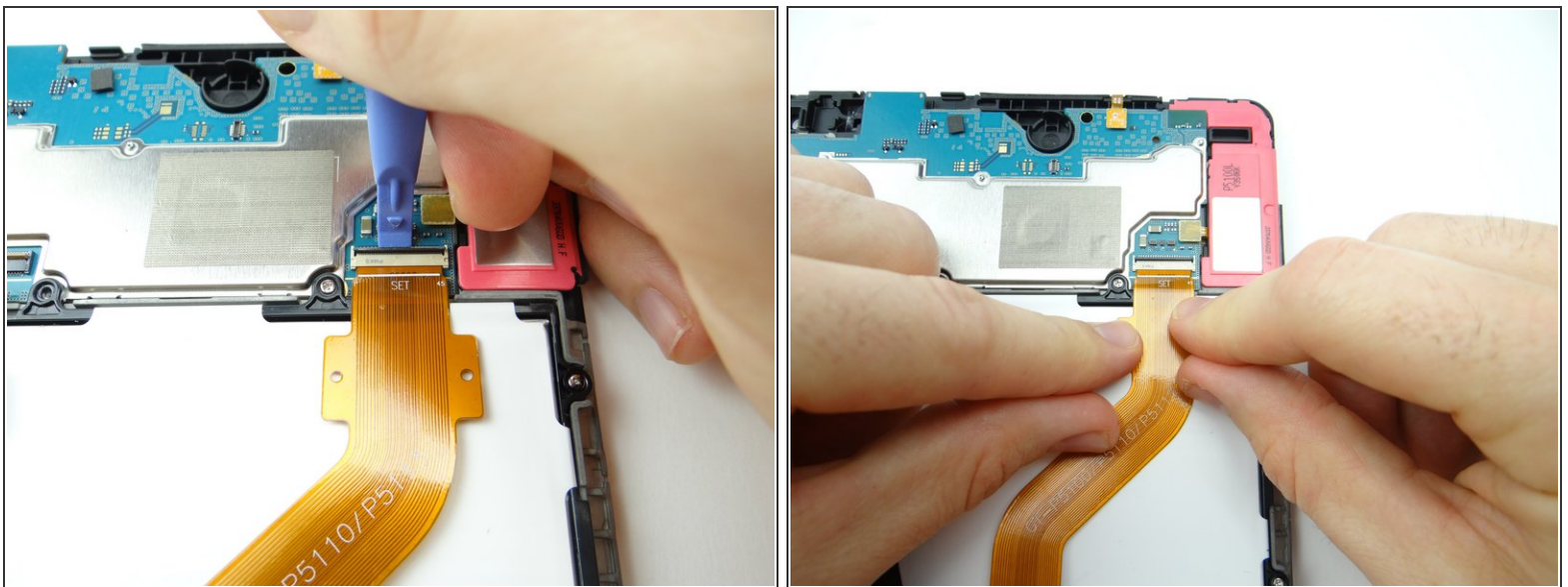
- Picture 1: Remove two 2.9 mm #00 Phillips screws securing charging port. Place in SLOT 2.
- ❗ Adhesive holds the microphone (attached to the charging port) in place:
 - Pictures 2: Pull up the right side of the charging port until the microphone starts to stick. Pinch the microphone with your fingers and peel it up.
 - Picture 3: Place charging port / microphone assembly in ZONE V.

Step 11 — Removal 3.0 - Battery



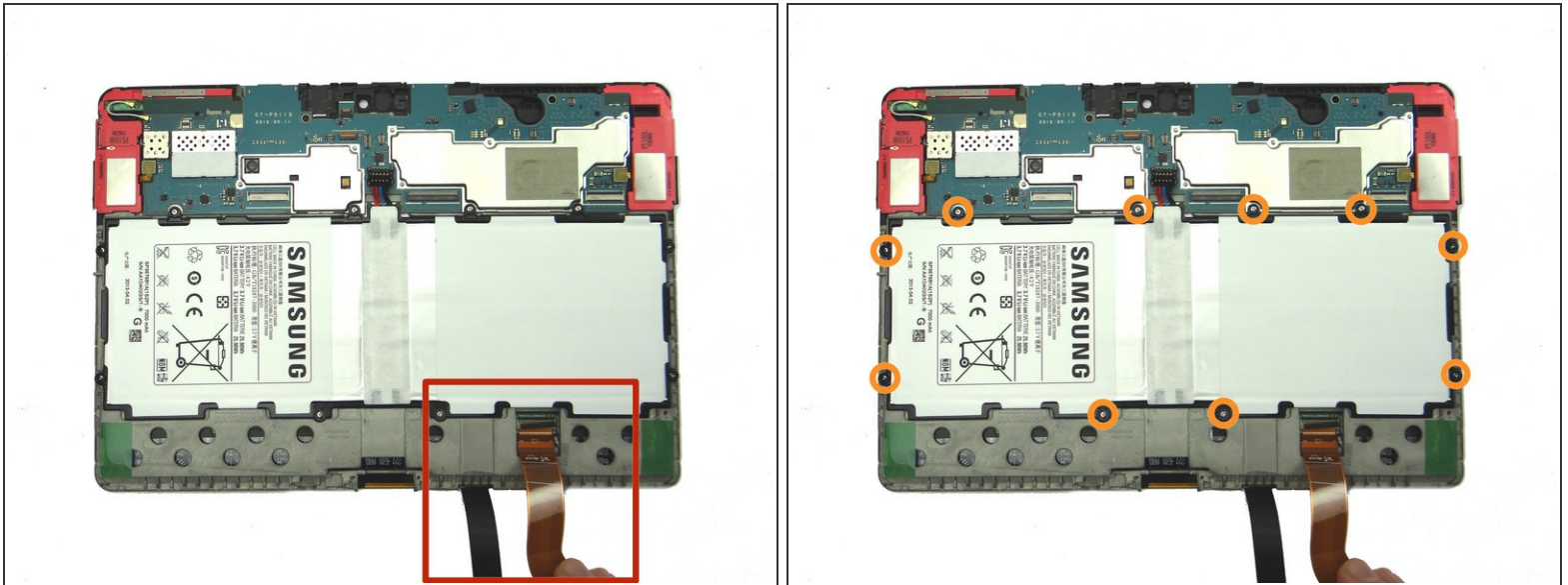
- Use blue pry tool to lift the cream-colored digitizer ZIF connector bar into open position.
- Slide cable out with your fingers.

Step 12



- Use blue pry tool to lift the black LCD ZIF connector bar into open position.
- Pull cable free with your fingers.

Step 13



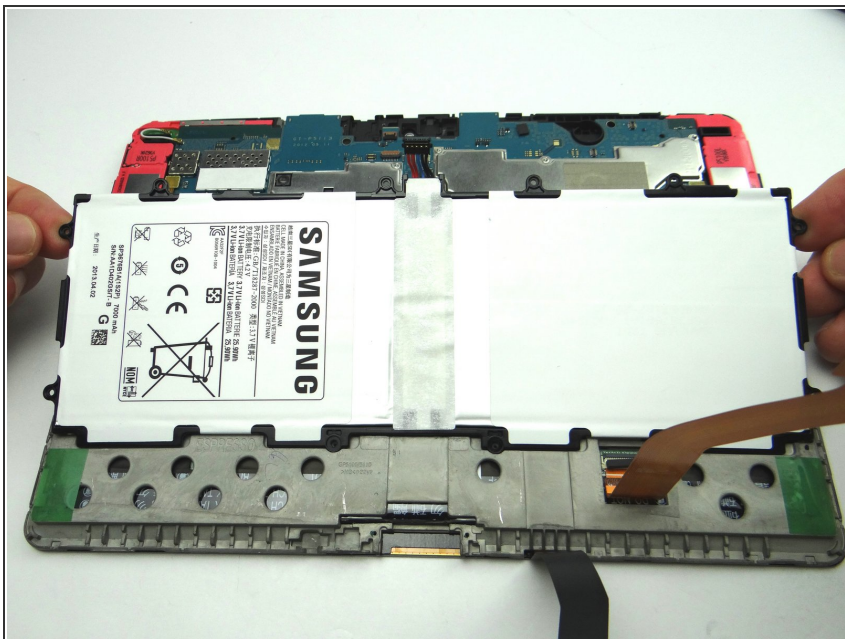
- Hold LCD and digitizer cables out of the way while removing the battery screws.
- Remove ten 3.0 mm #00 Phillips screws holding the battery. Place screws in SLOT 3.

Step 14



- The battery lifts easily up and away from the tablet. Place battery in ZONE V.

Step 15 — Replacement 3.0 - Battery



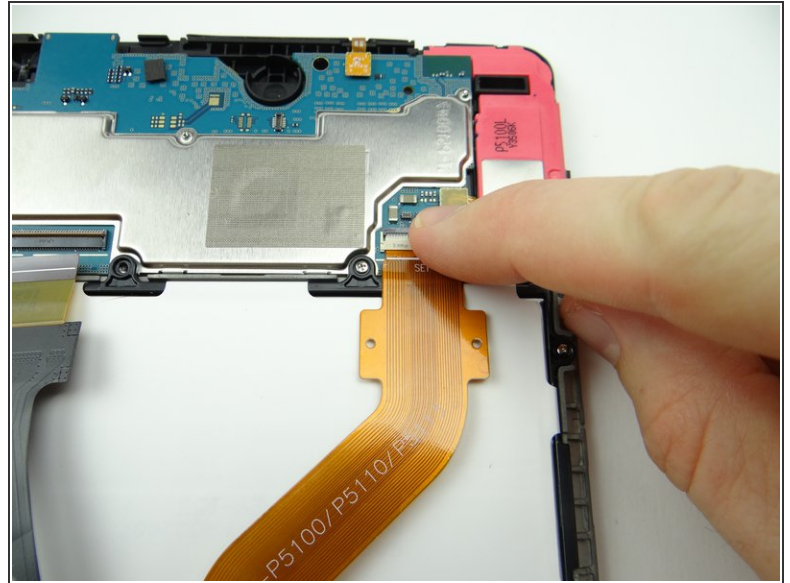
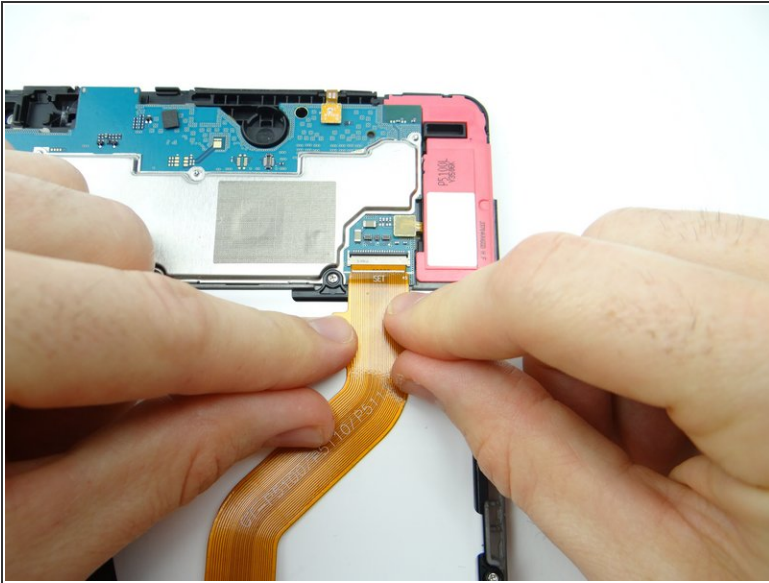
- From ZONE V, replace battery.

Step 16



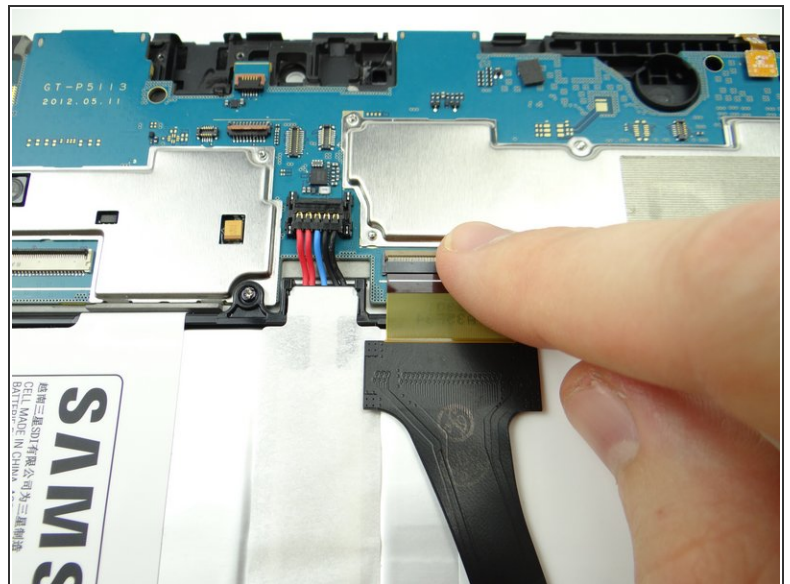
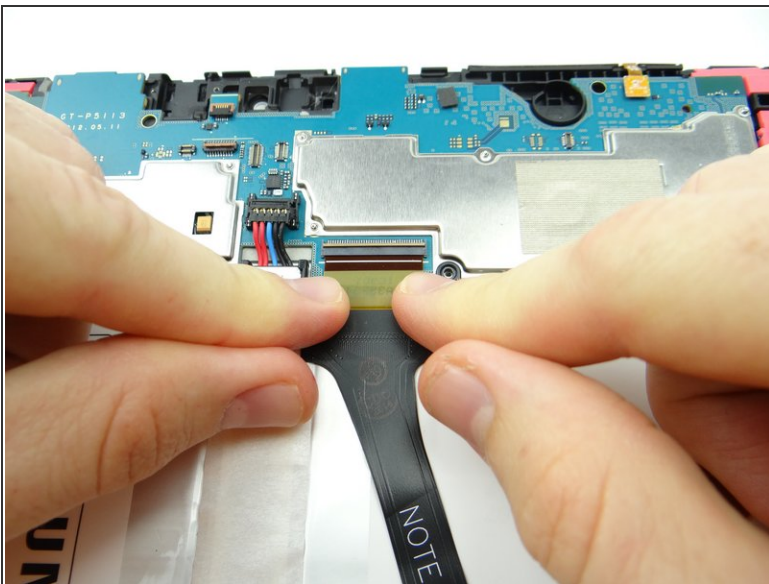
- Replace ten 3.0 mm #00 Phillips screws holding the battery from SLOT 3.

Step 17



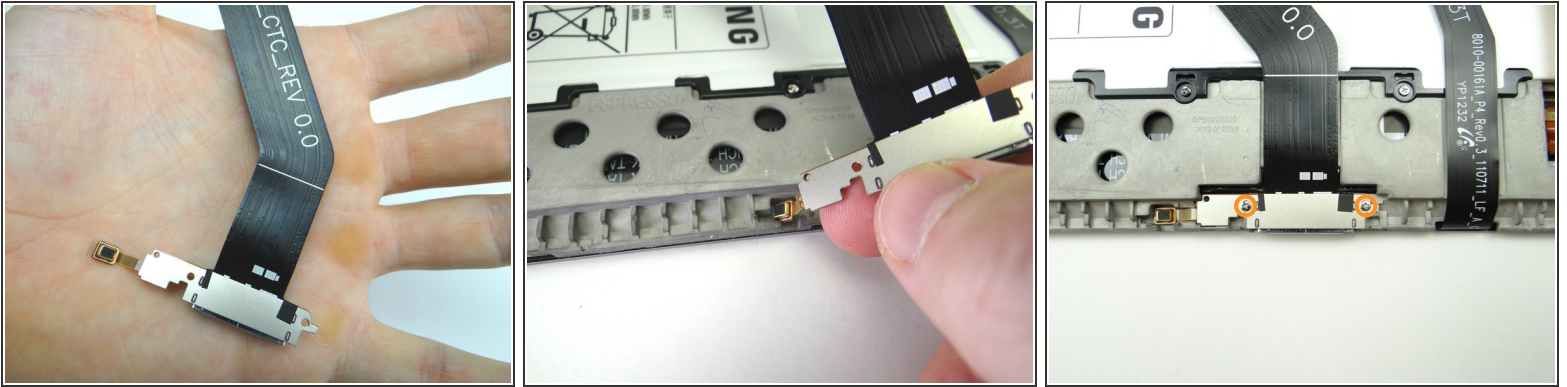
- Push LCD cable into open ZIF connector on logic board.
- Close ZIF connector black swing bar.

Step 18



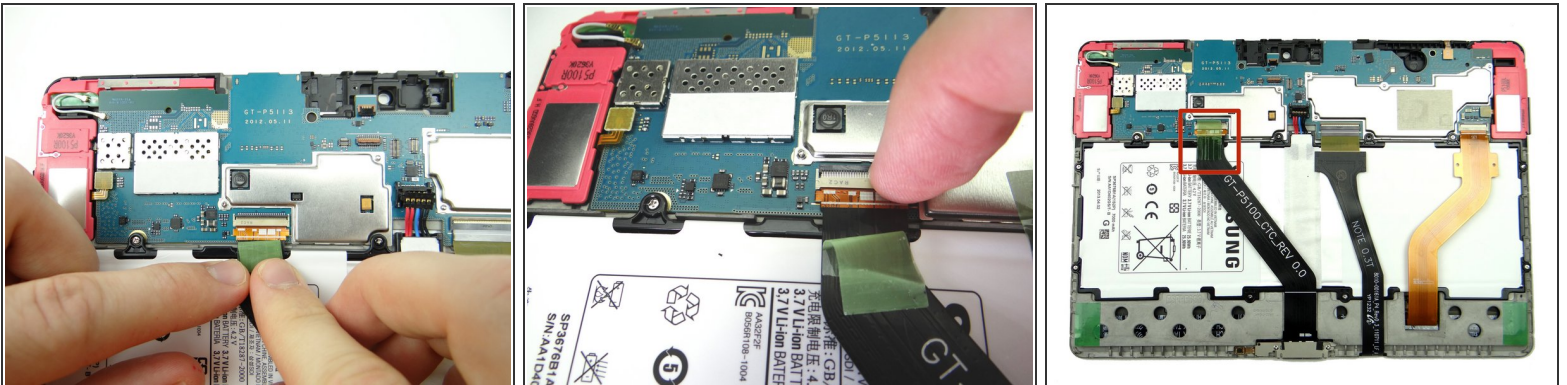
- Seat digitizer cable.
- Close ZIF connector cream-colored swing bar.

Step 19 — Replacement 2.8 - Charging Port Cable / Microphone



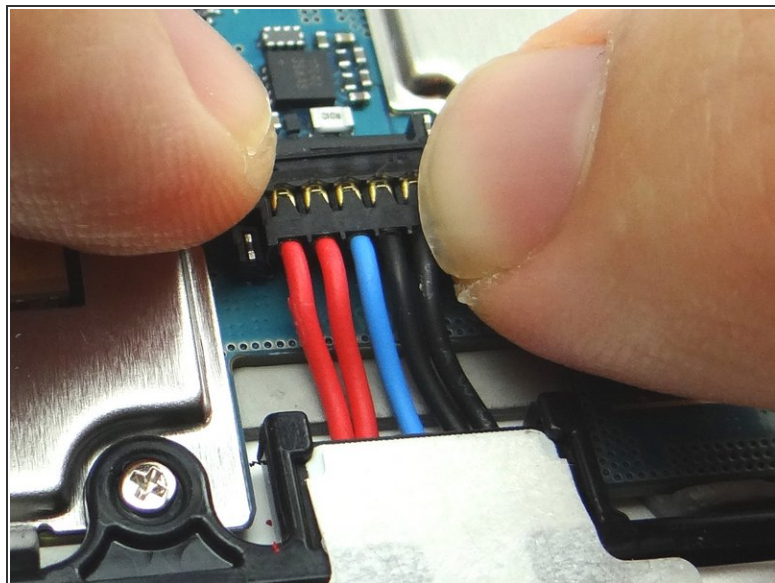
- From ZONE V, replace charging port cable & microphone:
- Picture 2: Seat microphone first then charging port.
- Picture 3: Replace two 2.9 mm #00 Phillips screws securing charging port from SLOT 2.

Step 20



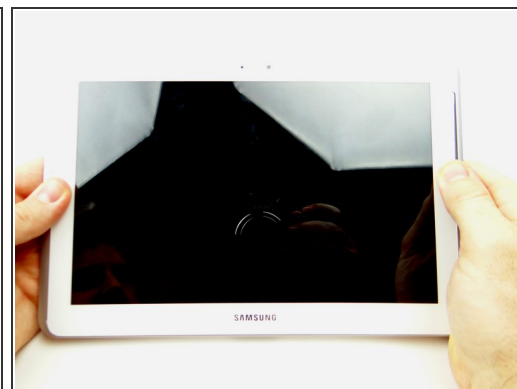
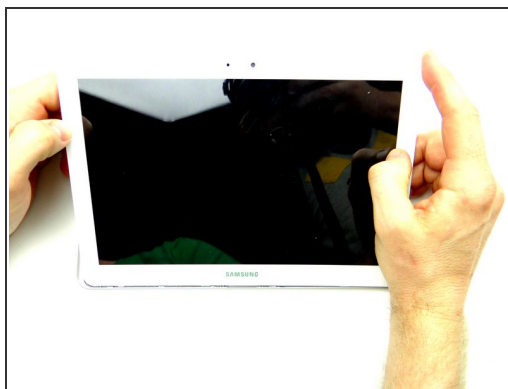
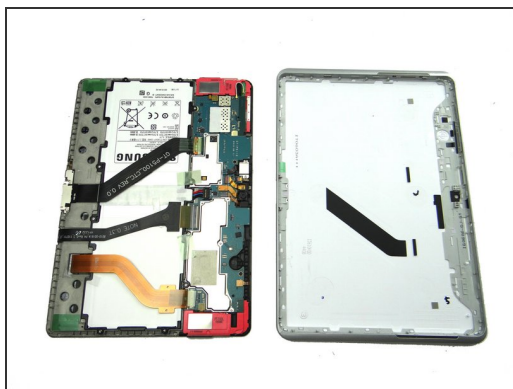
- Push charging port cable into open ZIF connector on logic board.
- Close ZIF connector black swing bar.
- Replace tape.

Step 21 — Replacement 2.0 Connect Battery



- Push battery connector straight down into its socket.

Step 22 — Replacement 1 - Rear Case



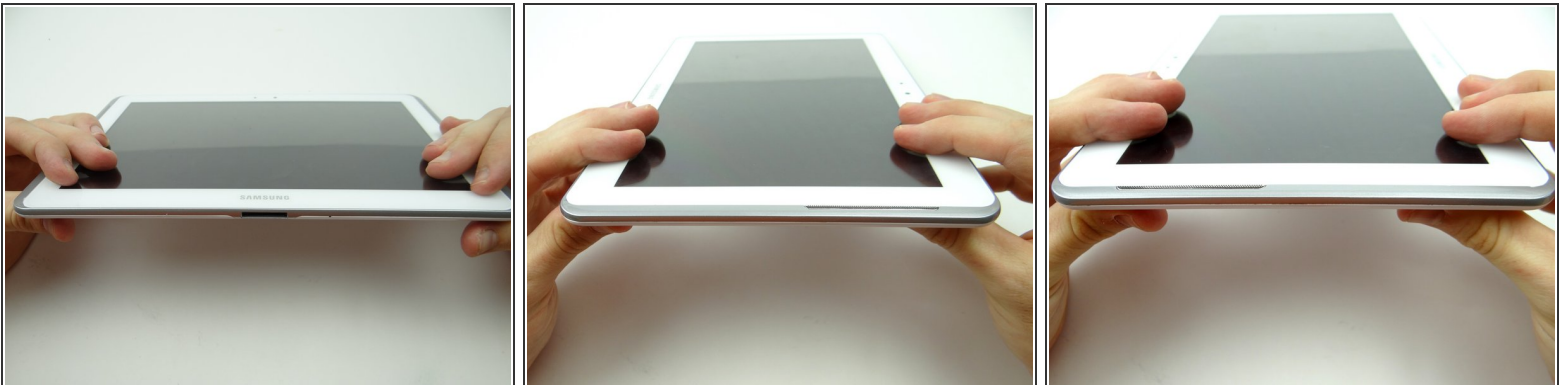
- Seat front panel on rear case, charging port first.
- Push center clips into place.

Step 23



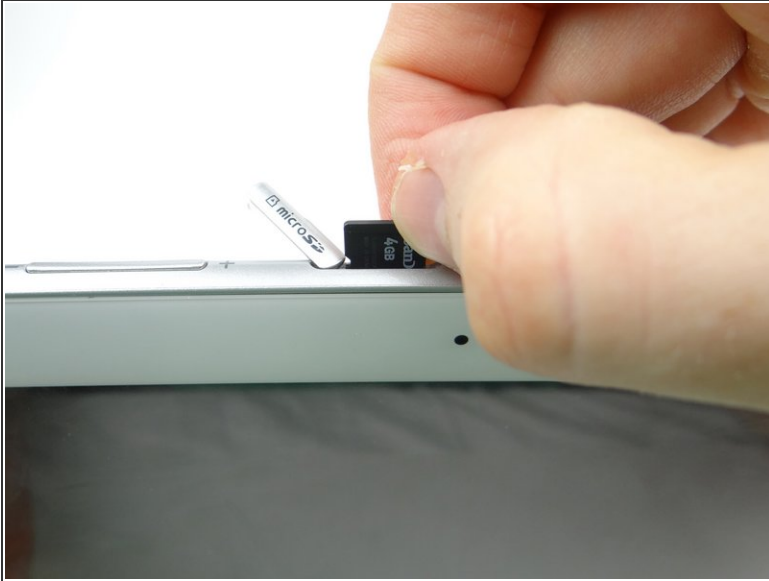
- Picture 1: Press charging port clips into place.
- Picture 2: Press clips in top corner into place.
- Picture 3: Turn tablet over and continue pressing clips into place.

Step 24



- Examine all edges to ensure all clips are seated and the display is flush with the rear case.

Step 25



- Replace SD card from COMPARTMENT A.
- Power up and test device.