

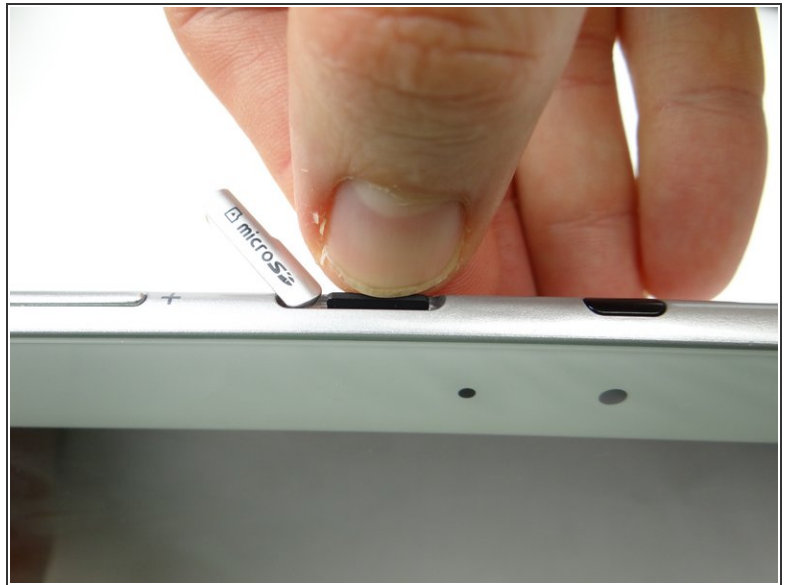
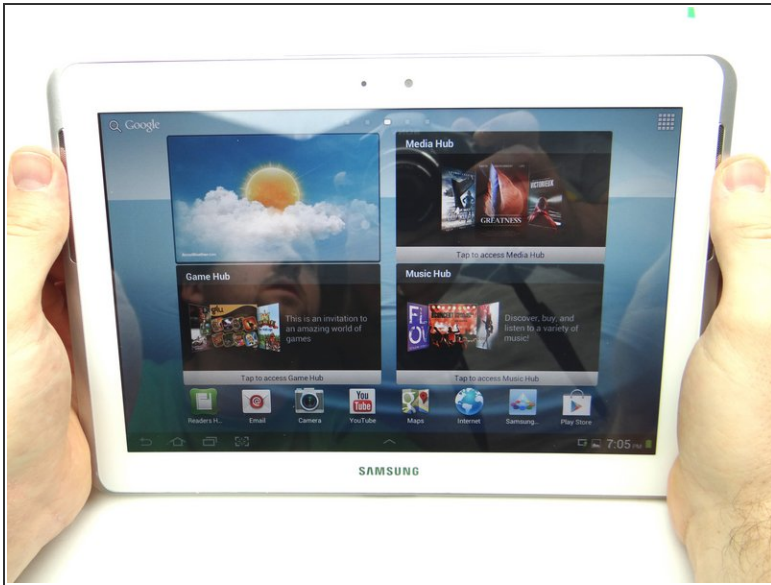
CELLPHONESANDBOX

Manual 12 - Display Assembly

Written By: James Linder

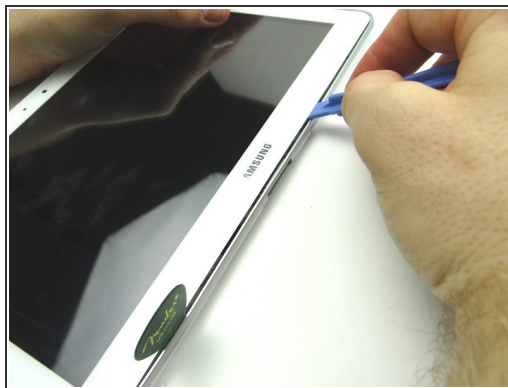
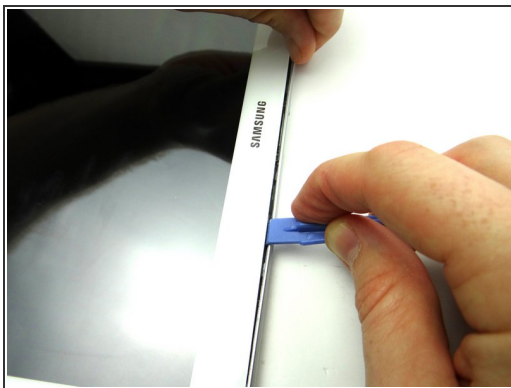


Step 1 — Removal 1 - Rear Case



- Power down the device.
- Remove SD card and place in COMPARTMENT A.

Step 2 — Free several clips holding rear case to front panel:



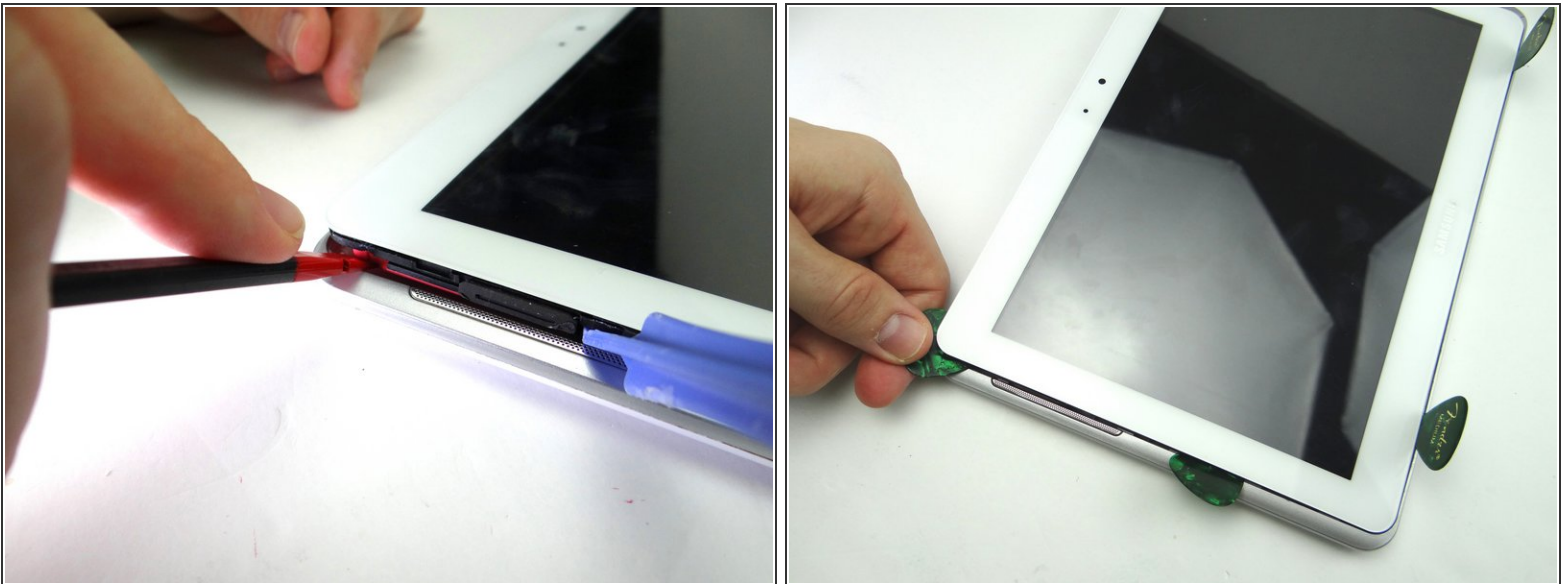
- Pictures 1 & 2: Insert a wide blue pry tool between the rear case and front panel at the bottom of the tablet, an inch left of the Samsung logo. Sweep left, then insert a guitar pick to hold the left side open. Work your way right with the blue pry tool.
- Picture 3: Insert a guitar pick to hold the right side open.

Step 3



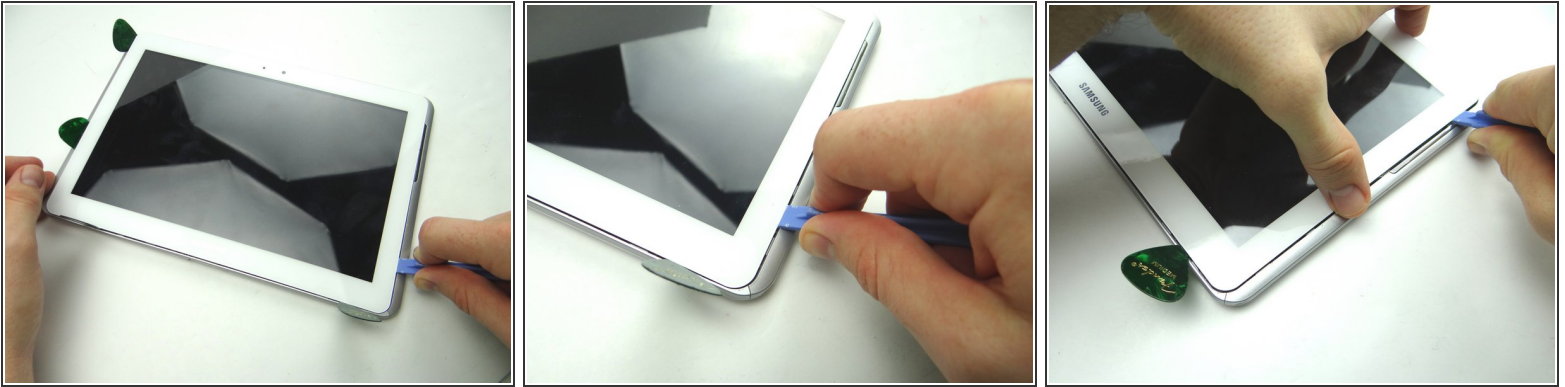
- Picture 1: Insert the blue pry tool in the lower-left corner.
- Picture 2: Work your way up to the speaker. Insert a guitar pick an inch below the speaker.
- Picture 3: Continue prying up until you can see the rubber piece on the speaker (red square).

Step 4



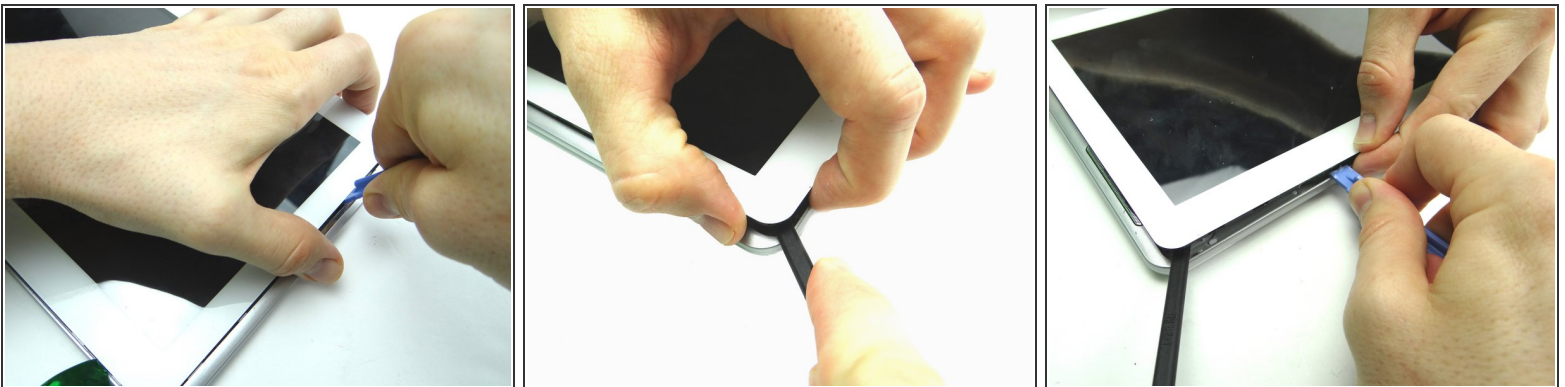
- Picture 1: Use spudger to pry up upper-left corner under the pink speaker.
- Picture 2: Put a guitar pick in place of the spudger to hold the upper-left corner open.

Step 5



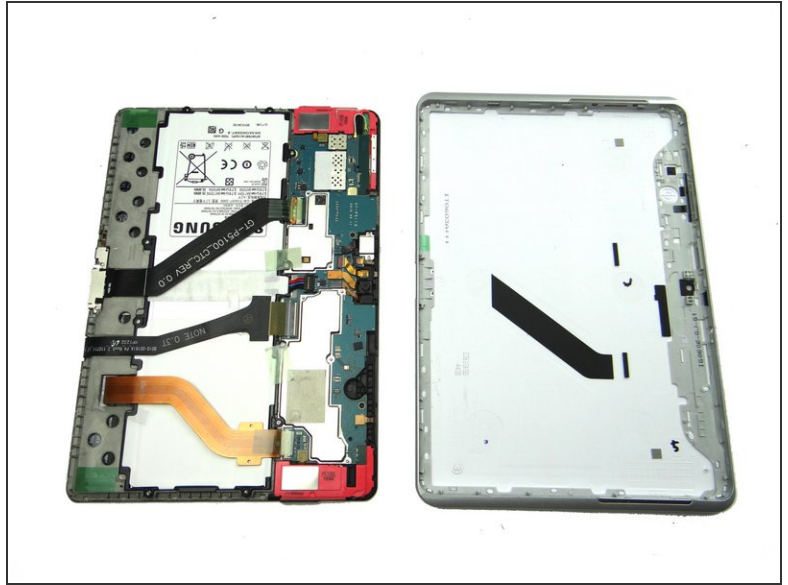
- Picture 1: Insert the blue pry tool in the lower-right corner.
- Picture 2: Slowly work your way up with the blue pry tool, pivoting the front panel slightly up from the rear case.
- Picture 3: Create just enough space to hold the front panel just above the rear case with your fingers.

Step 6



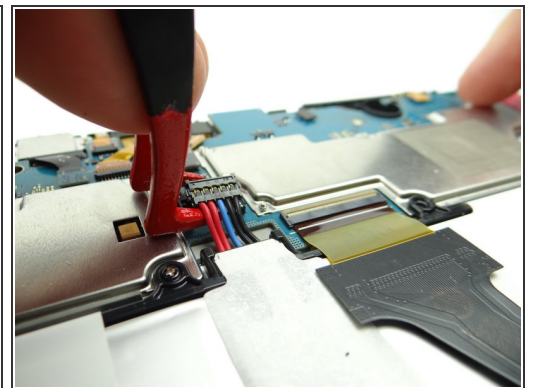
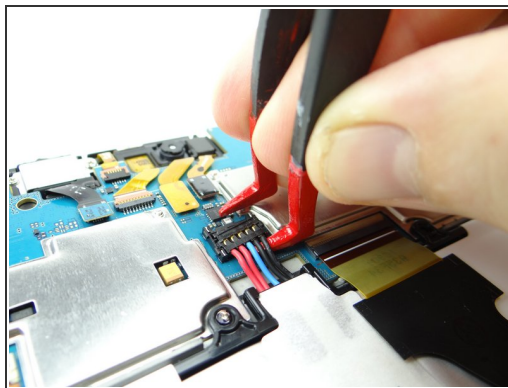
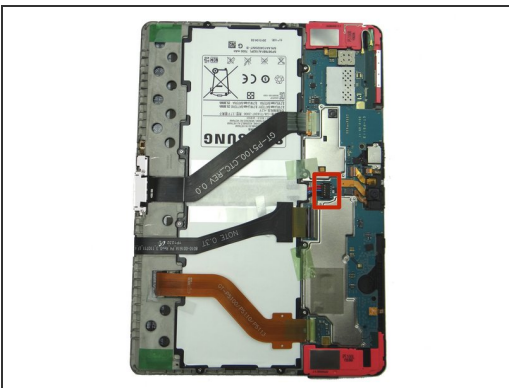
- Pictures 1 & 2: Continue lifting the upper-right corner until you can wedge the flat end of a spudger in the upper-right corner to hold it open.
- Picture 3: Sweep across the top with the blue pry tool, while gently pulling up the front panel with your fingers.

Step 7



- Remove the blue pry tools, then pivot the top edge of the front panel above the rear case.
- Once the top edge reaches a 45° angle, pull it away from the rear case.

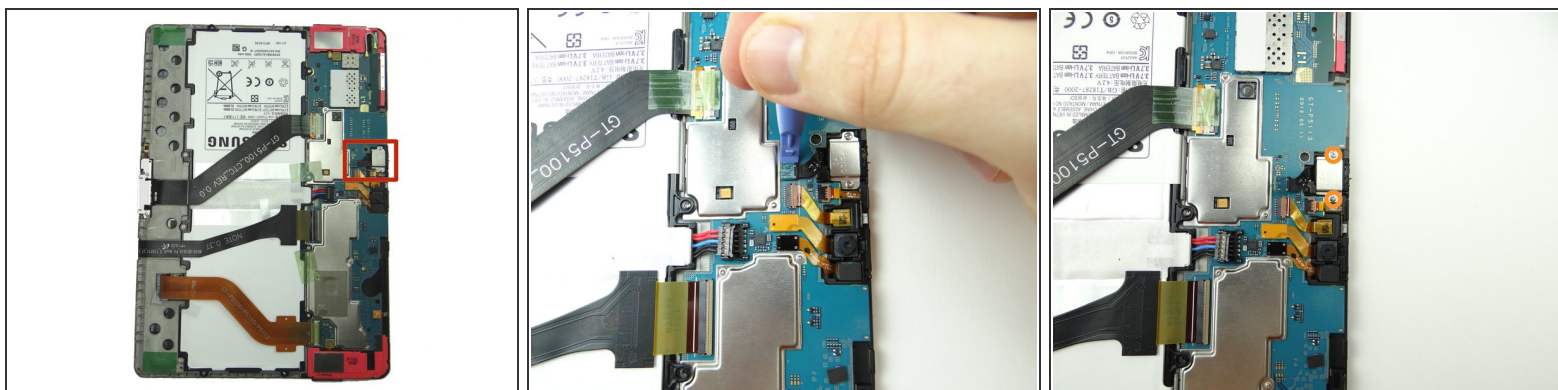
Step 8 — Removal 2.0 - Disconnect Battery



⚠ Battery cable head is fragile:

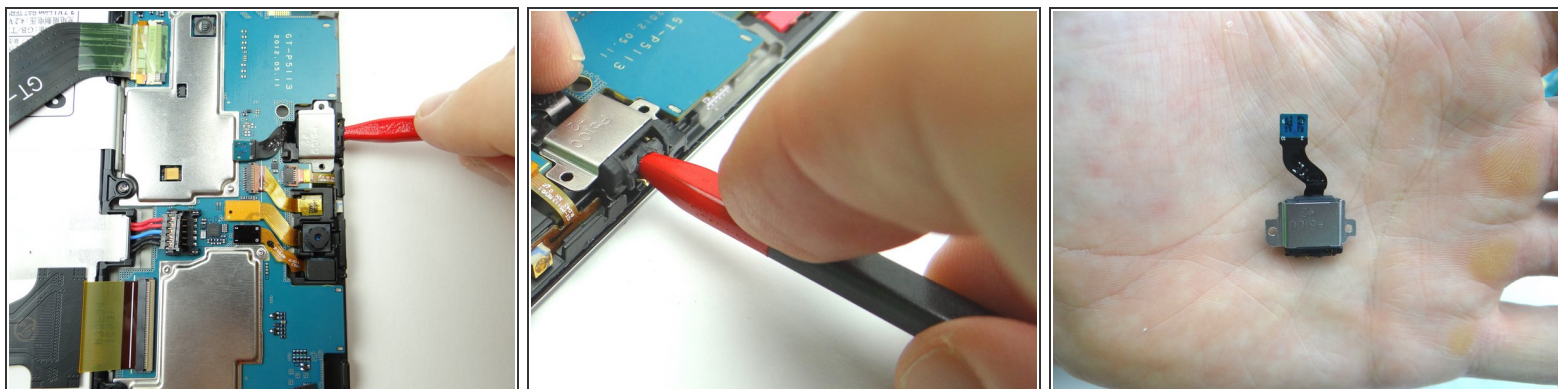
- Use one prong of the plastic tweezers to wedge under the right side of the battery connector and pull it up slightly.
- Lift battery connector straight up from the left side to dislodge it.

Step 9 — Removal 2.1 - Headphone Jack



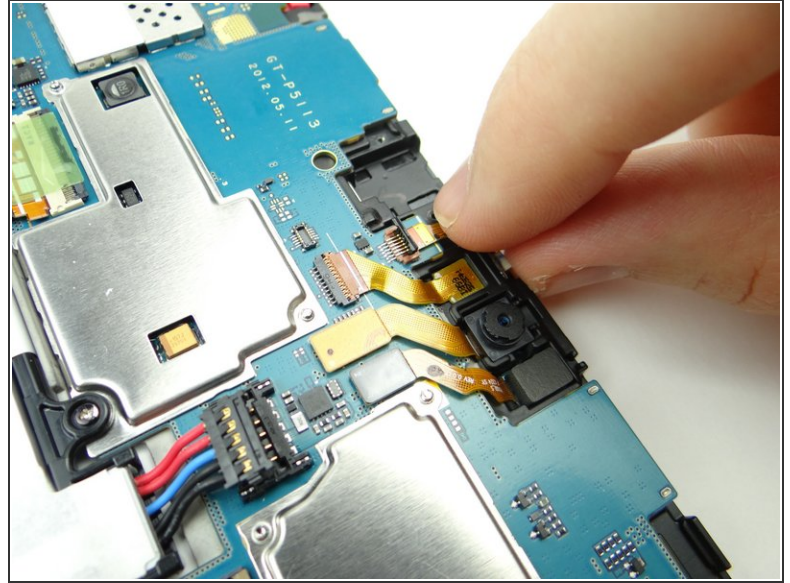
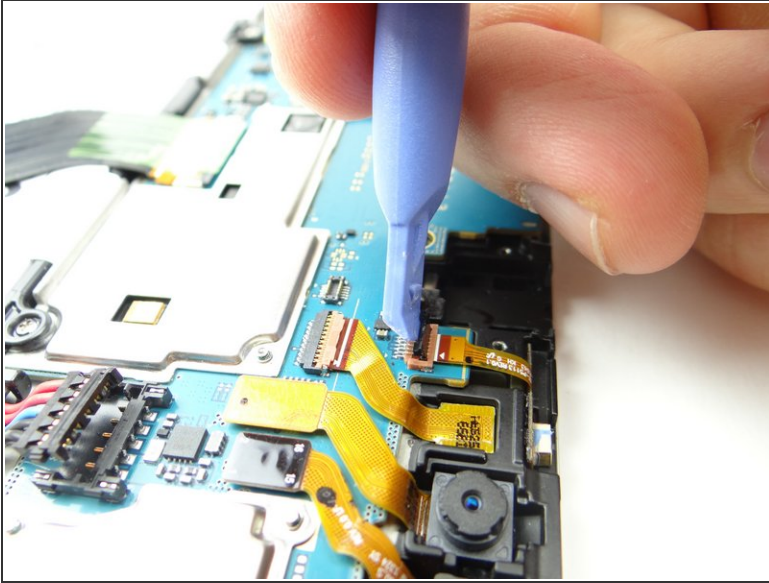
- Remove the headset jack:
- Use blue pry tool to disconnect headset jack cable.
- Remove two 3.0 mm #00 Phillips screws from the headset jack. Place screws in SLOT 1.

Step 10



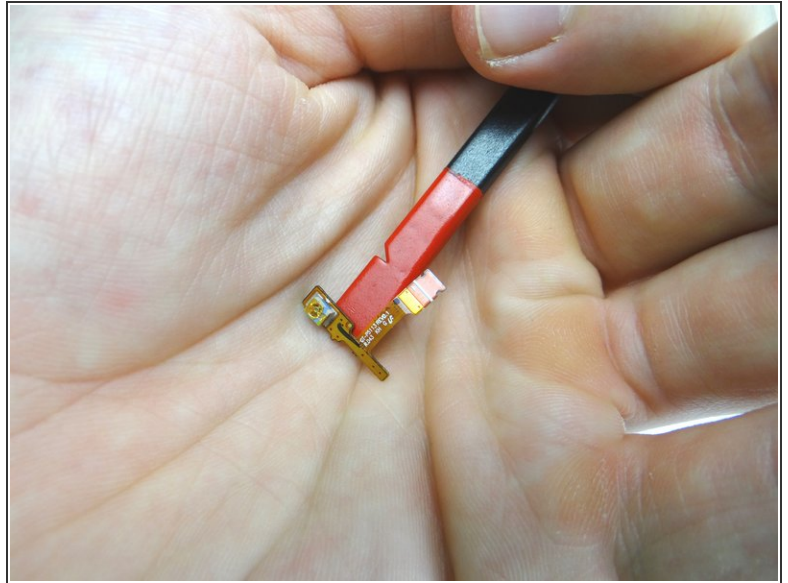
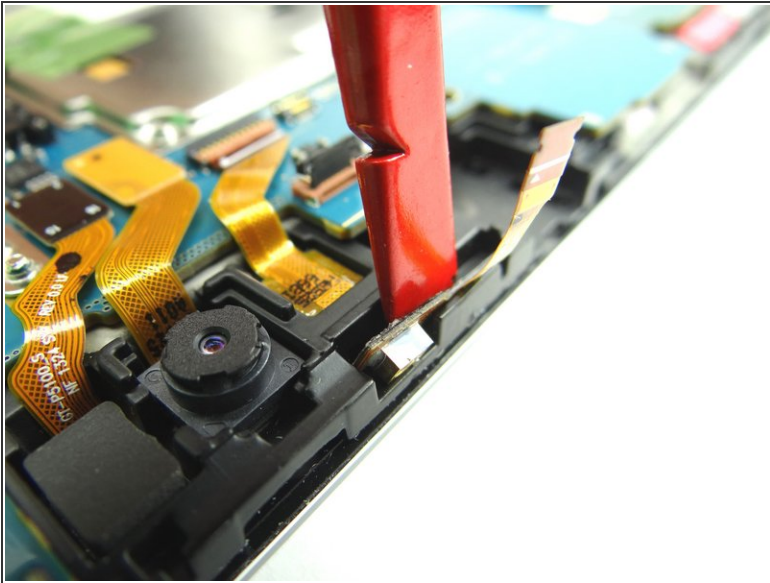
- Pictures 1 & 2: Use the pointed tip of the spudger to lift the headset jack out of its socket.
- Place in COMPARTMENT B.


Step 11 — Removal 2.2 - Infrared



- Use blue pry tool to open ZIF connector holding the infrared sensor cable.
- With the ZIF connector open, use your finger to pull the cable free.

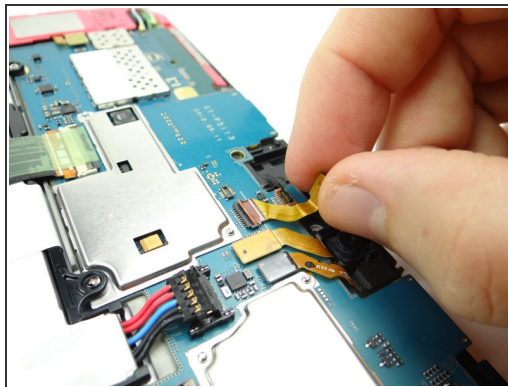
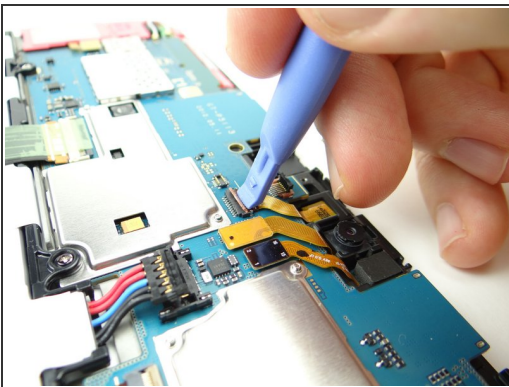
Step 12



 Adhesive holds the infrared cable in place:

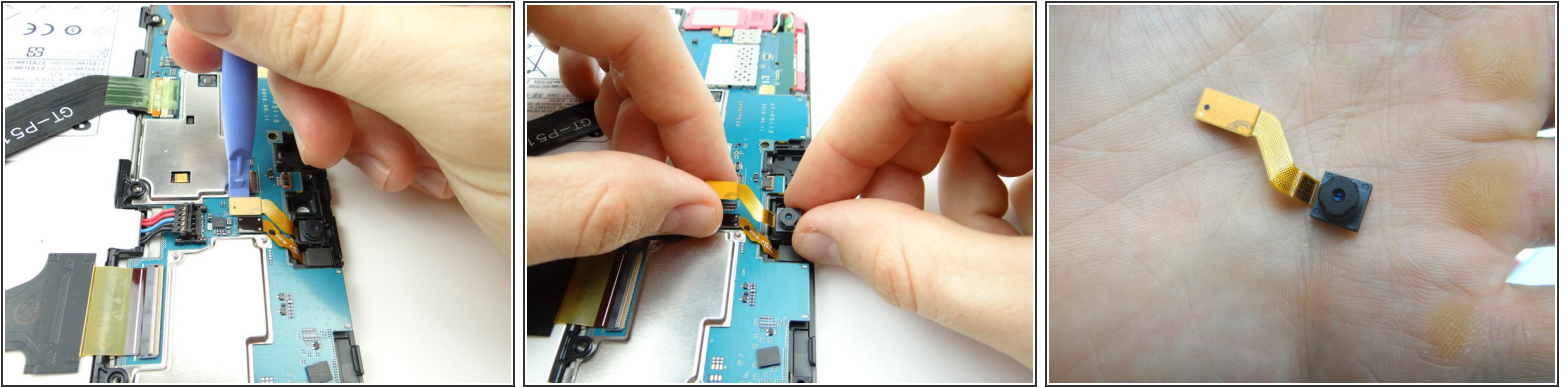
- Use the flat end of the spudger to separate the cable from the frame.
- Place in COMPARTMENT C.

Step 13 — Removal 2.3 - Front-facing Camera



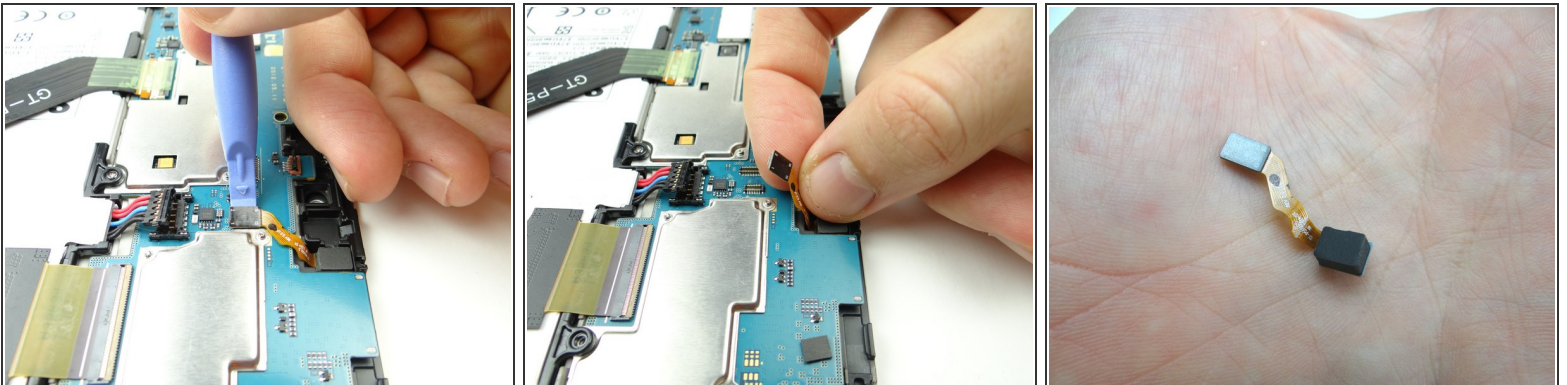
- Picture 1: Use the blue pry tool to push ZIF connector open.
- Picture 2: Lift front camera from its socket, then away from the ZIF connector.
- Picture 3: Place in COMPARTMENT C.

Step 14 — Removal 2.4 - Rear Camera



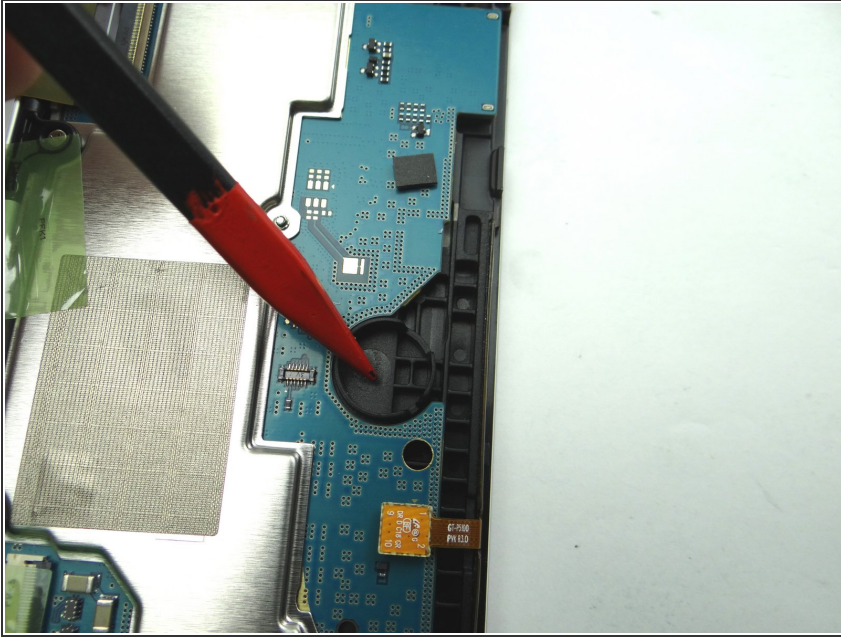
- Use blue pry tool to disconnect rear camera.
- Remove rear camera and place in COMPARTMENT D.

Step 15 — Removal 2.5 - Sensor



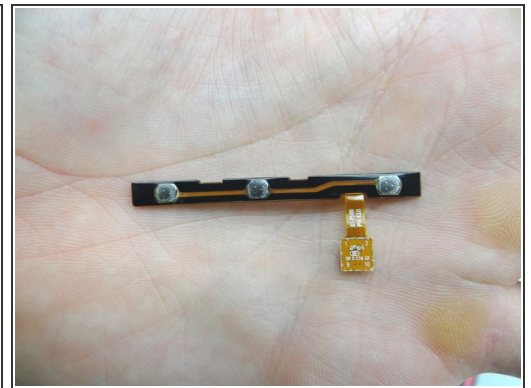
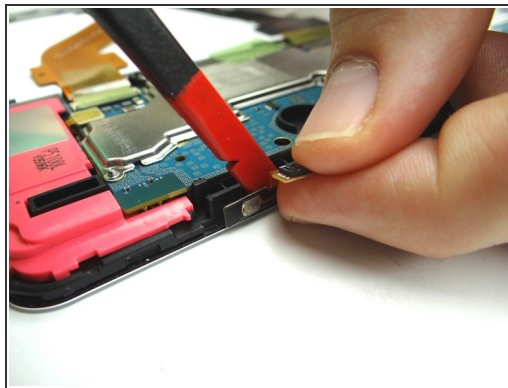
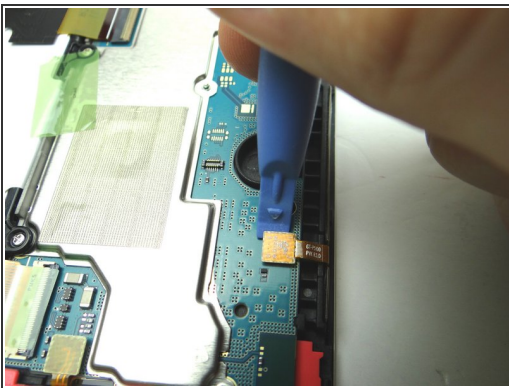
- Picture 1: Use blue pry tool to disconnect sensor cable.
- ⚠ Picture 2: Pinch cable as close to sensor as possible and gently pull it free.
- Picture 3: Place sensor in COMPARTMENT D.

Step 16 — Removal 2.6 - Missing Vibrator



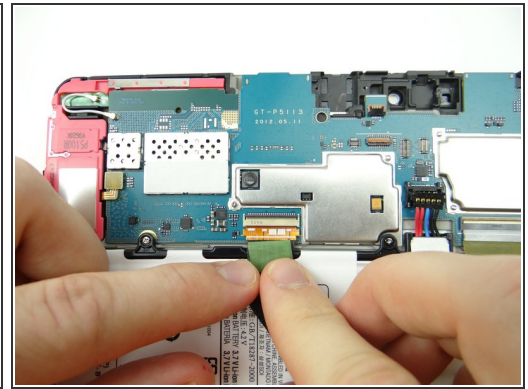
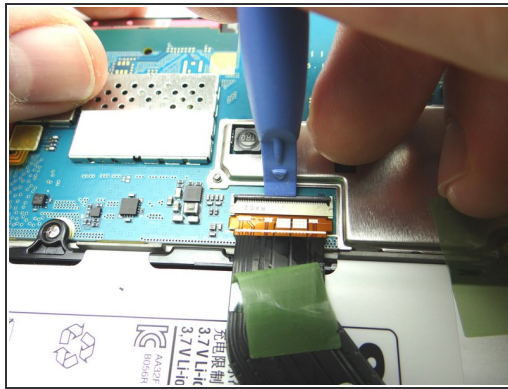
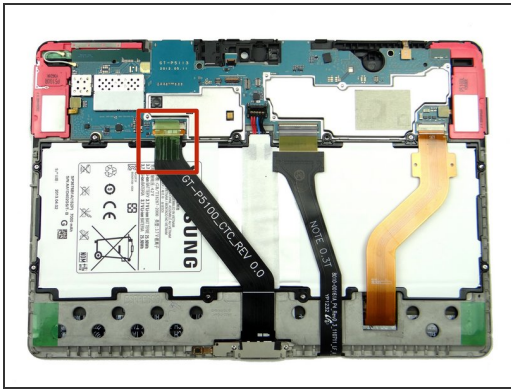
- ★ Picture 1: Use blue pry tool to disconnect vibrator cable.
- Picture 2: Use curved-tip tweezers in the closed position to wedge underneath the vibrator. Pry it up slightly then grab it with your fingers to finish removing it.
- Picture 3: Place it in COMPARTMENT F.

Step 17 — Removal 2.7 - Power and Volume Buttons Cable



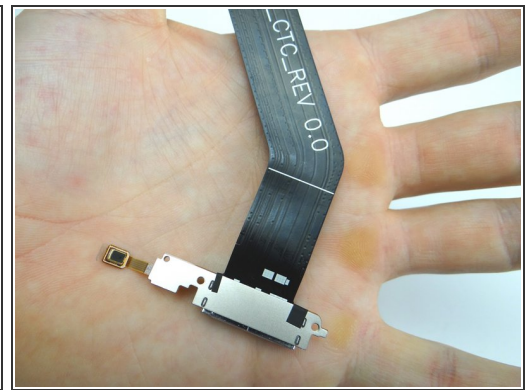
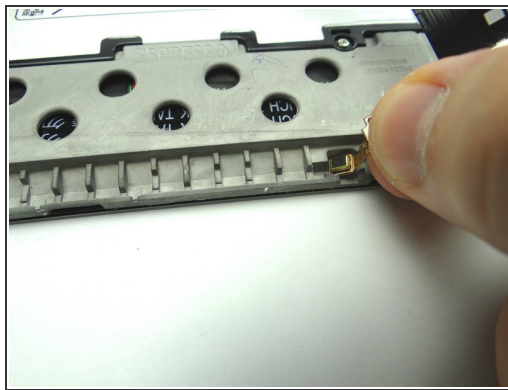
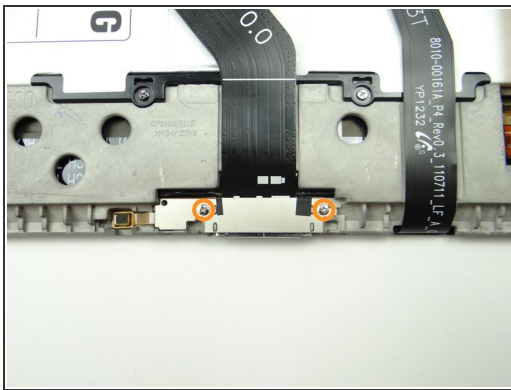
- Picture 1: Use blue pry tool to disconnect power / volume buttons cable.
- ❗ Adhesive holds the power & volume buttons cable in place:
- Picture 2: Use the flat end of the spudger to separate the cable from the frame.
- Picture 3: Place power & volume buttons cable in COMPARTMENT E.

Step 18 — Removal 2.8 - Charging Port Cable / Microphone



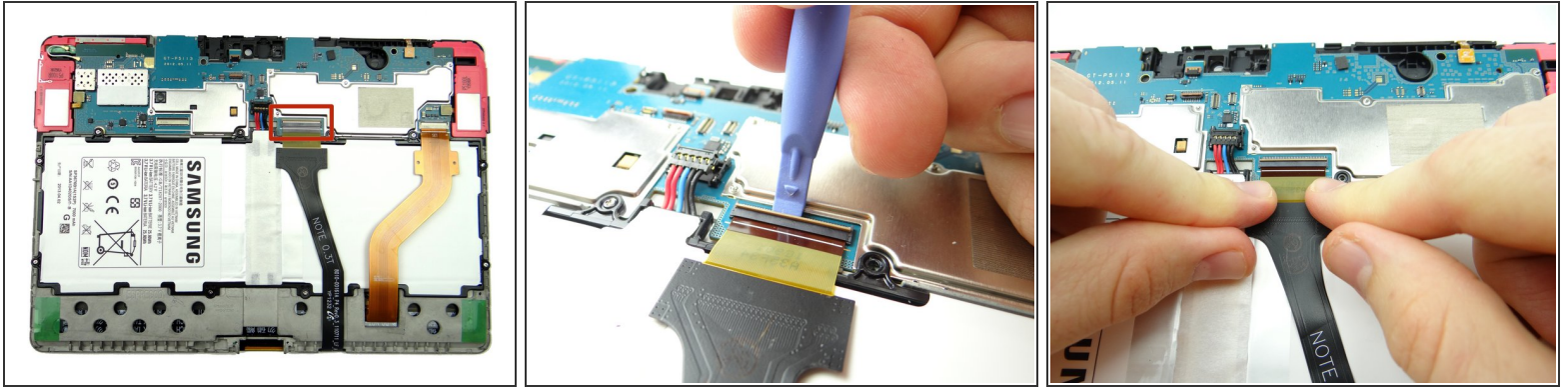
- Picture 1: Peel tape up from connector and fold it back. Don't discard it - leave it attached to the cable.
- Picture 2: Use blue pry tool to lift ZIF connector black bar into open position.
- Picture 3: Slide cable out with your fingers.

Step 19



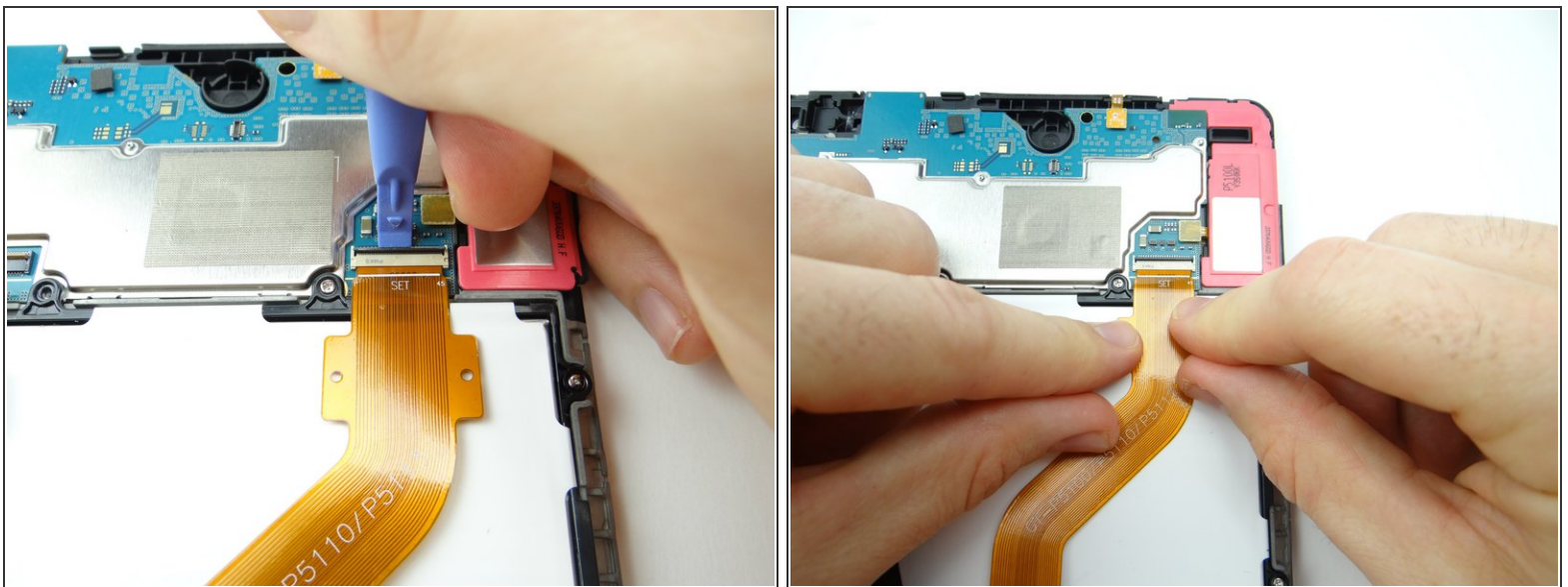
- Picture 1: Remove two 2.9 mm #00 Phillips screws securing charging port. Place in SLOT 2.
- ❗ Adhesive holds the microphone (attached to the charging port) in place:
 - Pictures 2: Pull up the right side of the charging port until the microphone starts to stick. Pinch the microphone with your fingers and peel it up.
 - Picture 3: Place charging port / microphone assembly in ZONE V.

Step 20 — Removal 3.0 - Battery



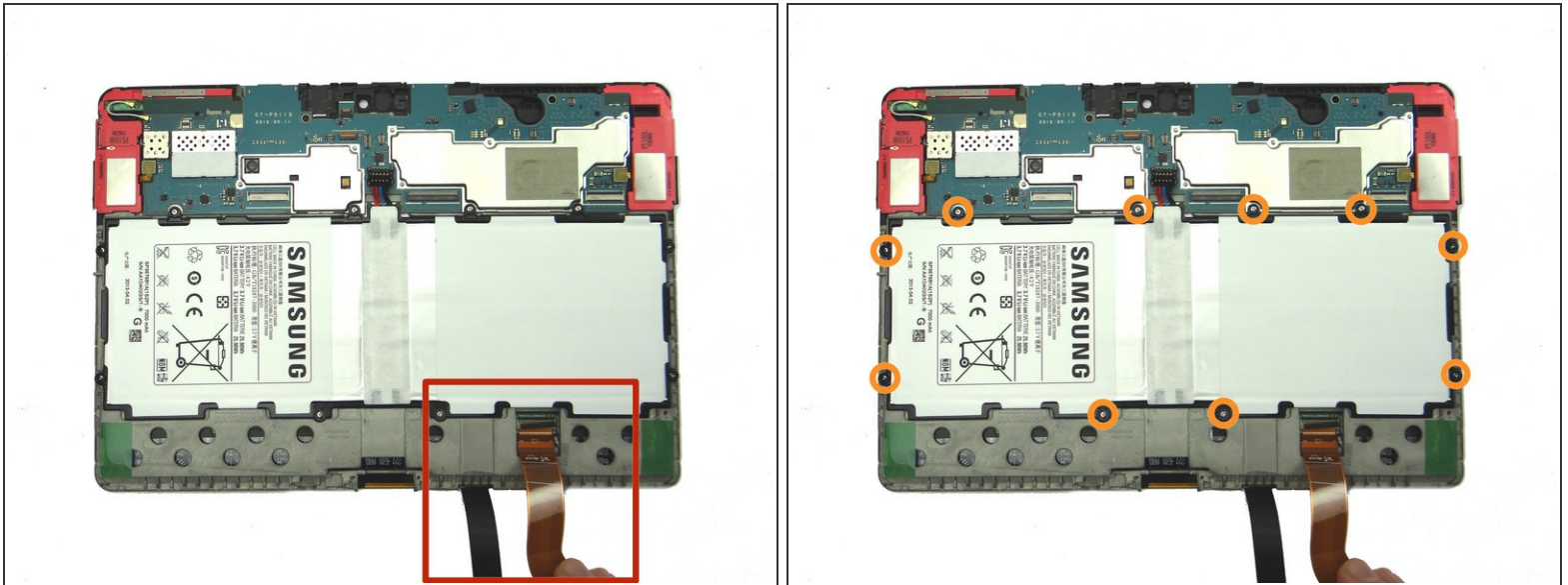
- Use blue pry tool to lift the cream-colored digitizer ZIF connector bar into open position.
- Slide cable out with your fingers.

Step 21



- Use blue pry tool to lift the black LCD ZIF connector bar into open position.
- Pull cable free with your fingers.

Step 22



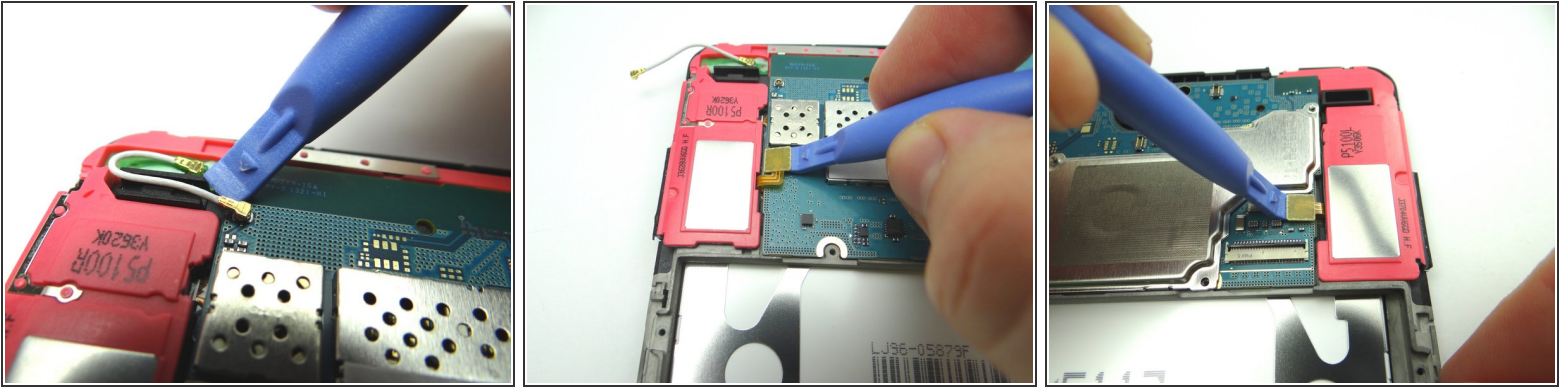
- Hold LCD and digitizer cables out of the way while removing the battery screws.
- Remove ten 3.0 mm #00 Phillips screws holding the battery. Place screws in SLOT 3.

Step 23



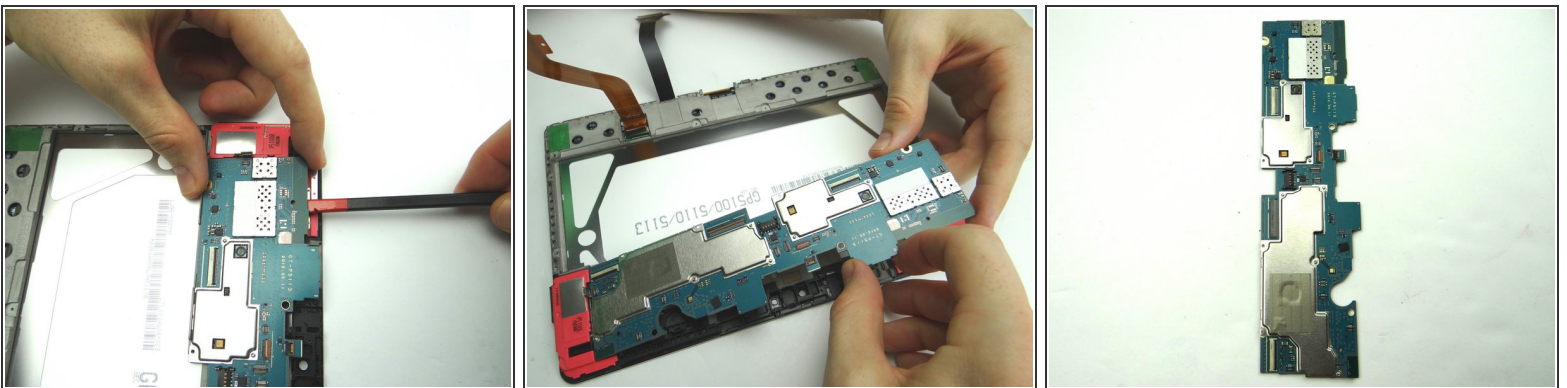
- The battery lifts easily up and away from the tablet. Place battery in ZONE V.

Step 24 — Removal 4.0 - Logic Board



- Picture 1: Use blue pry tool to disconnect antenna from logic board. Leave antenna connected to the loudspeaker.
- Picture 2: Use blue pry tool to disconnect loudspeaker from logic board.
- Picture 3: Use blue pry tool to disconnect opposite loudspeaker from logic board.

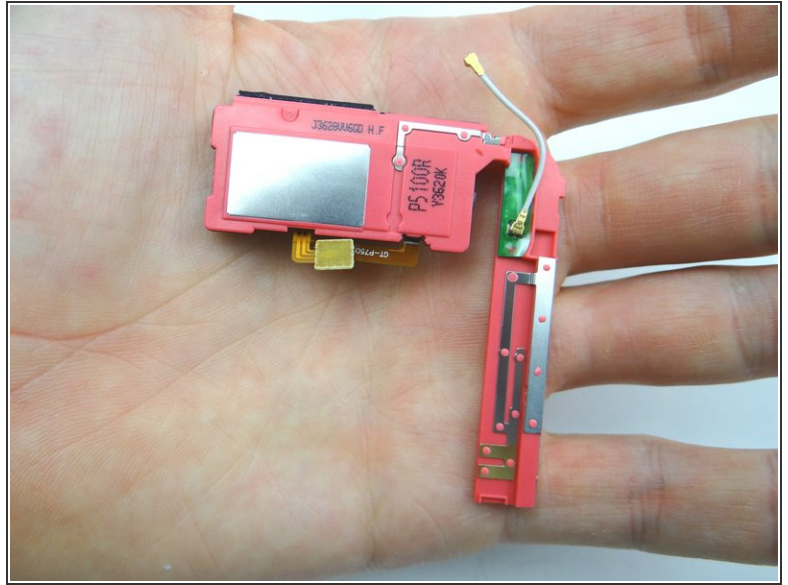
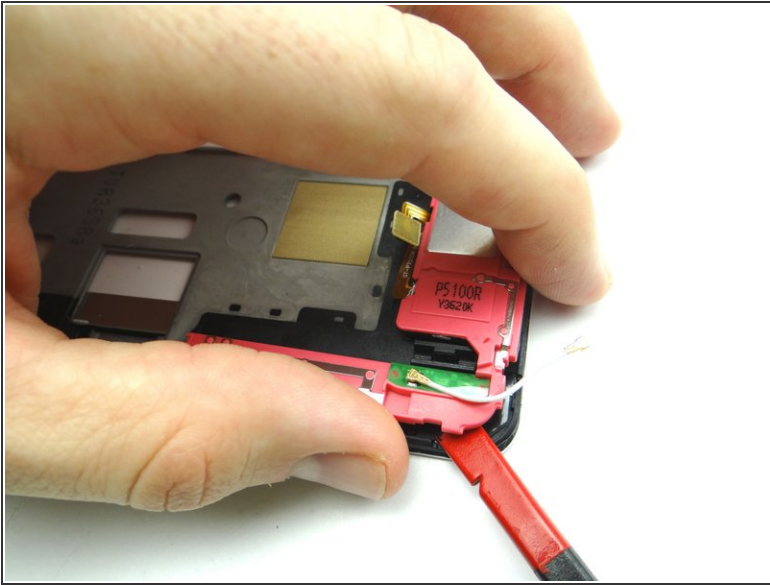
Step 25



i The logic board should come up easily:

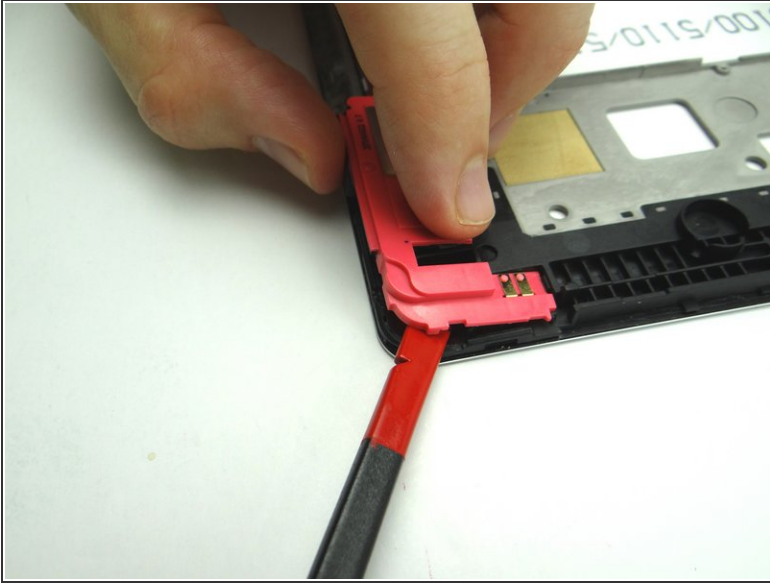
- Picture 1: Wedge the flat end of the spudger under the top edge of the logic board as shown. Pry up just enough to pinch the logic board with your fingers.
- Picture 2: Carefully continue lifting logic board away from the front panel.
- Picture 3: Place in ZONES I & II.

Step 26 — Removal 5.1.1 - Loudspeaker (with antenna)



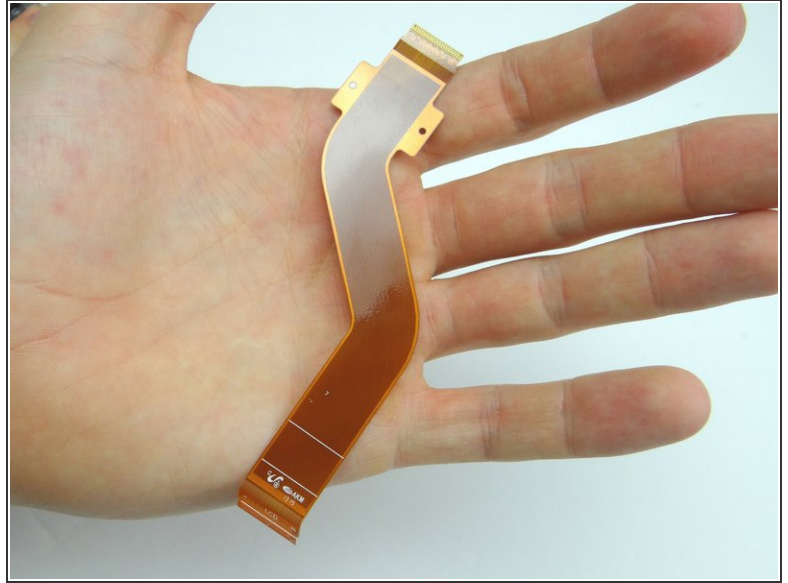
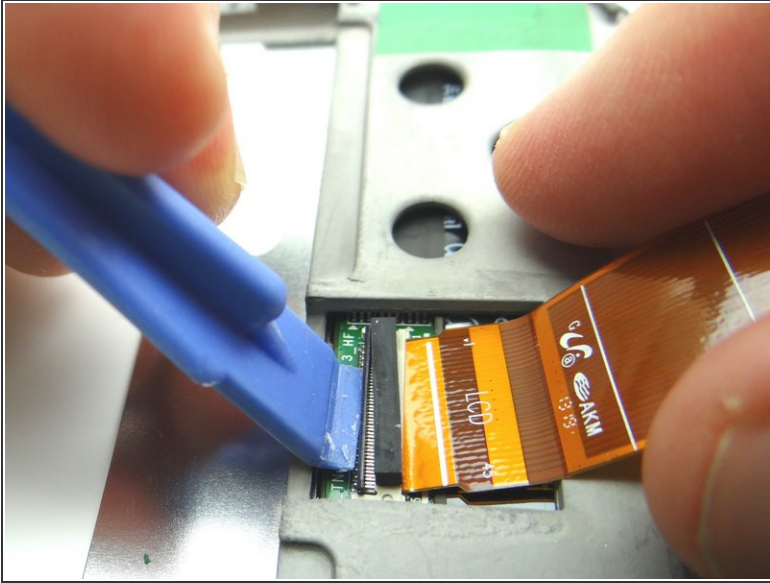
- Wedge flat end of spudger under corner of loudspeaker with the antenna. Pull up with your hands at the same time.
- Place in sandbox.

Step 27 — Removal 5.1.2 - Loudspeaker (without antenna)



- Wedge flat end of spudger under corner of loudspeaker without antenna. Pull up with your hands at the same time.
- Place in sandbox.

Step 28 — Remove LCD Cable from front panel.



- Open ZIF connector on front panel and pull cable free.
- Place LCD cable in sandbox.

Step 29 — Removal 6 - Front Panel



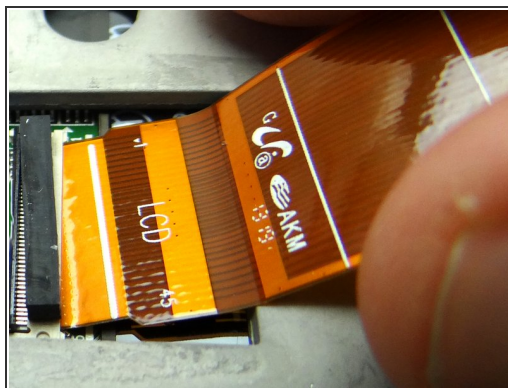
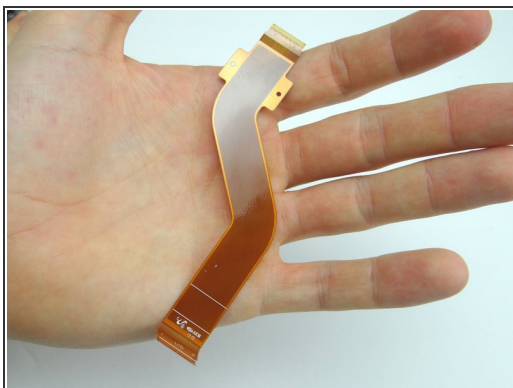
- Front panel remains.

Step 30 — Replacement 6 - Front Panel



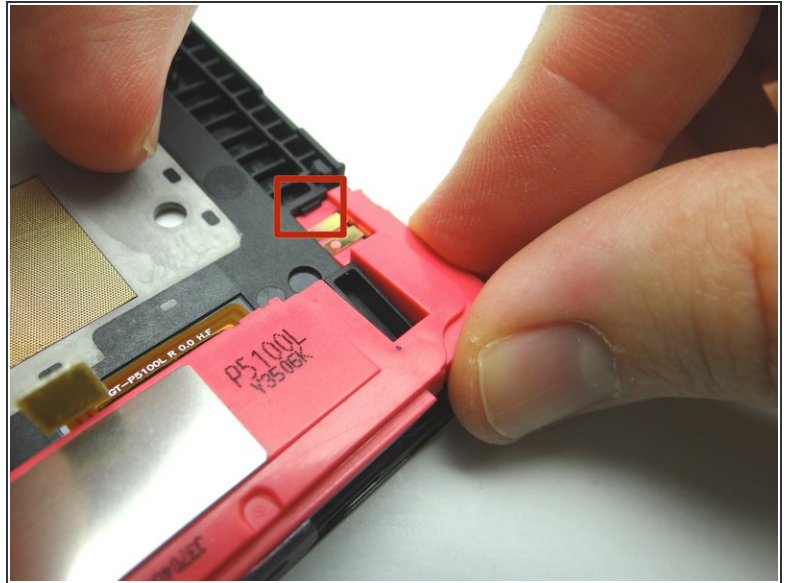
- Retrieve replacement front panel.

Step 31 — Replacement 5.2 - LCD Cable



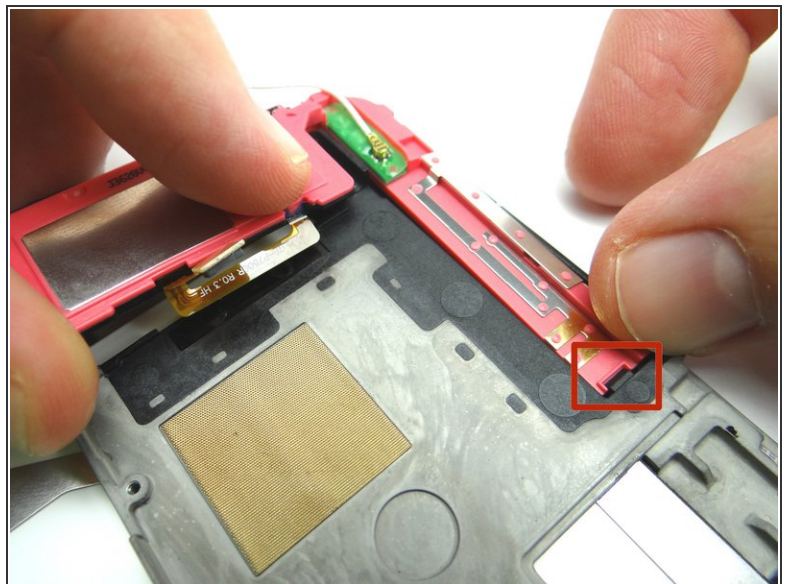
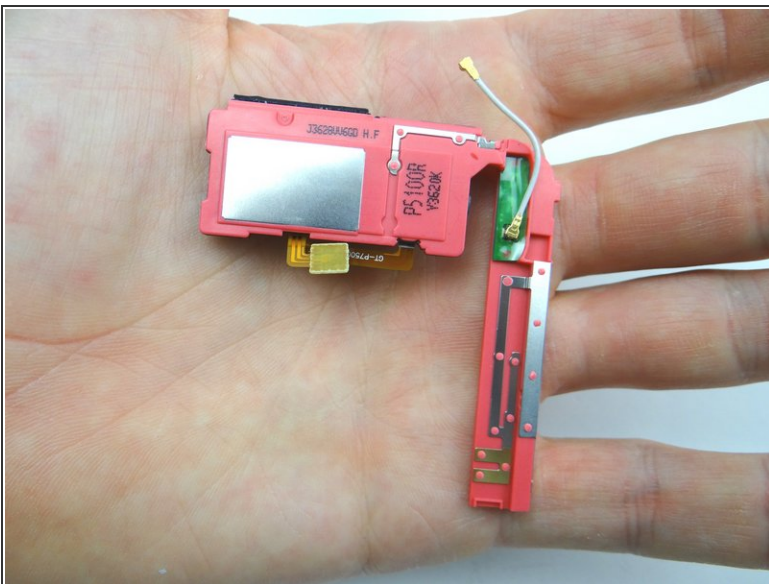
- Picture 1: Retrieve LCD cable.
- Picture 2: Seat LCD cable.
- Picture 3: Make sure white line (red rectangle) on LCD cable aligns with white line on PCB board. Then close ZIF connector.

Step 32 — Replacement 5.1.2 - Loudspeaker (without antenna)



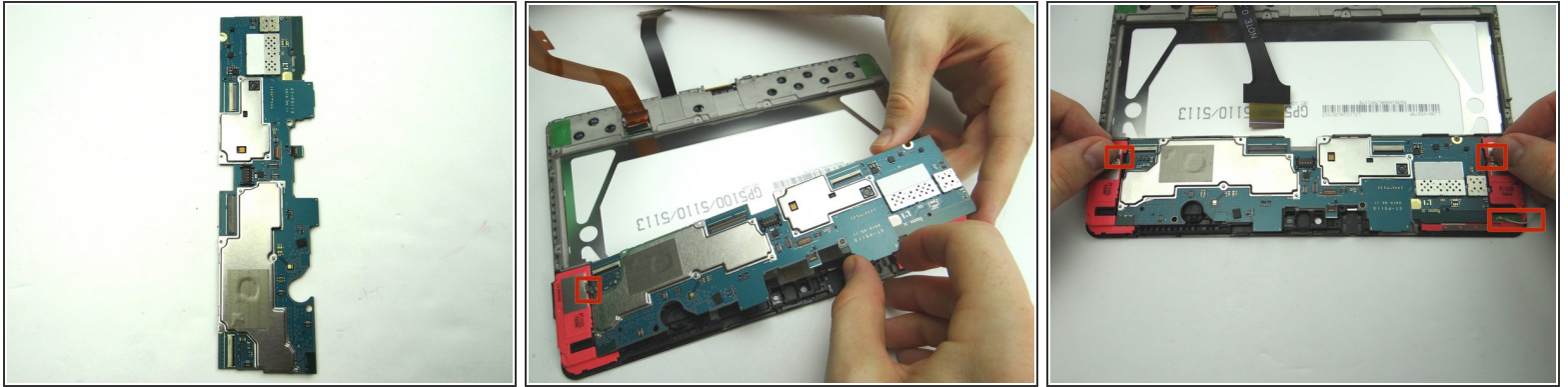
- Replace loudspeaker without antenna:
- Set under ledge (red square) then push into place.

Step 33 — Replacement 5.1.1 - Loudspeaker (with antenna)



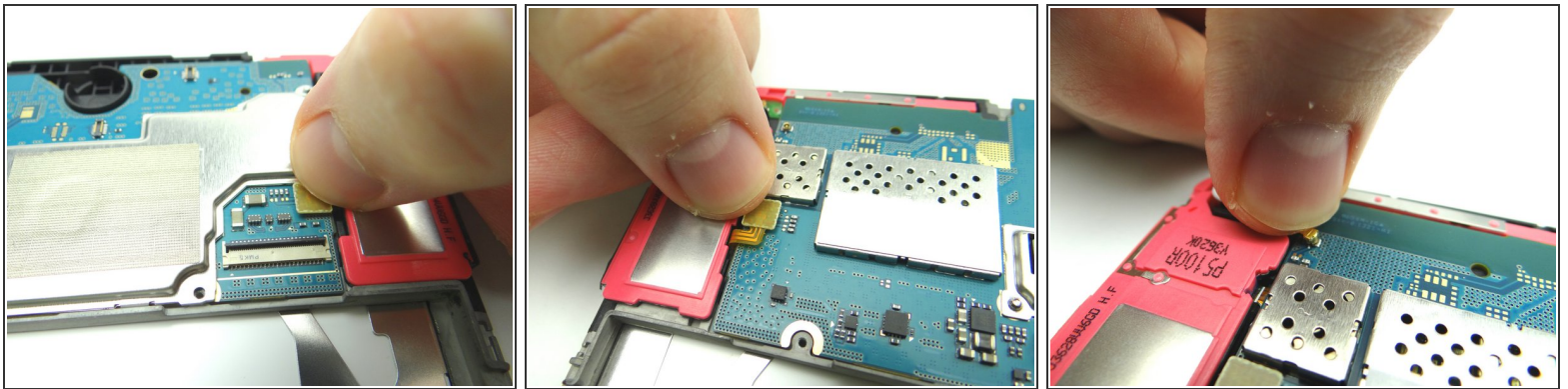
- Replace loudspeaker with antenna:
- Seat under ledge (red square) then push into place.

Step 34 — Replacement 4.0 - Logic Board



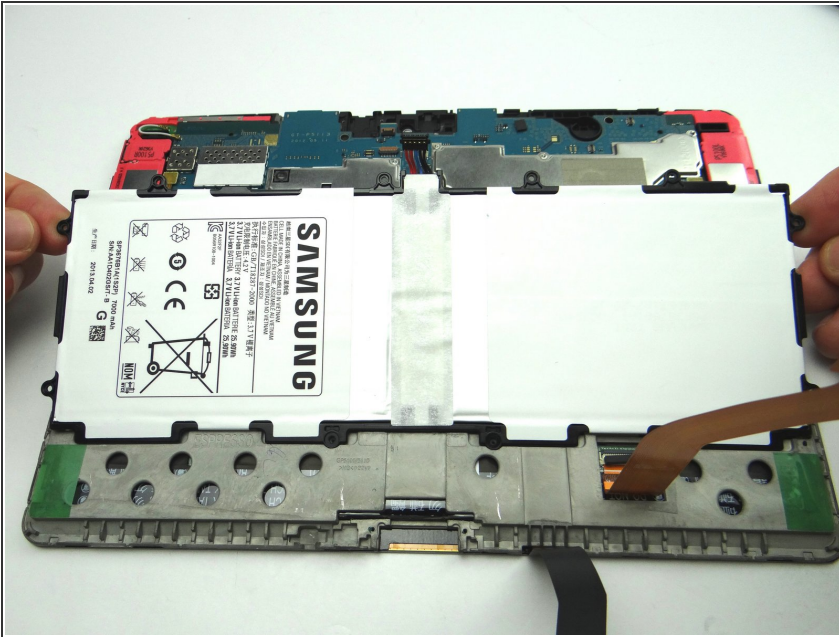
- Picture 1: Retrieve logic board from ZONES I & II.
- Pictures 2 & 3: Seat logic board. Make sure speaker cables and antenna don't get trapped underneath the board.

Step 35



- Connect cables on both speakers.
- Connect antenna.

Step 36 — Replacement 3.0 - Battery



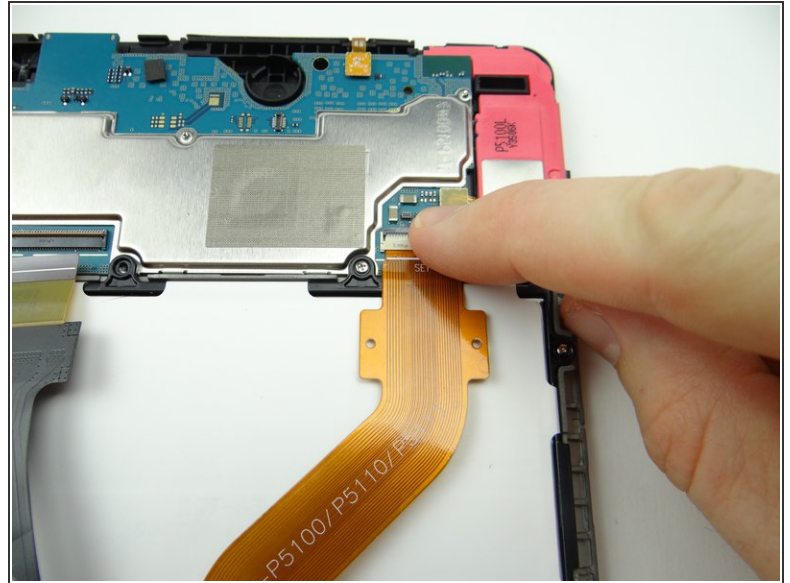
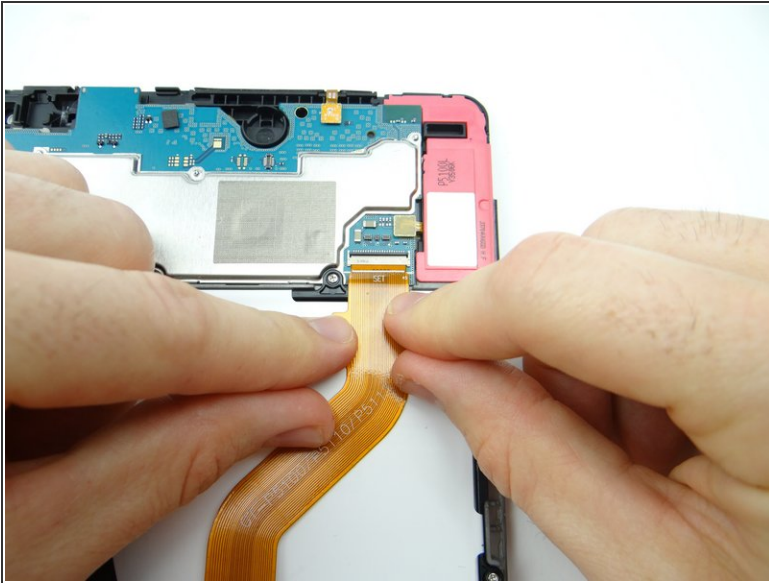
- From ZONE V, replace battery.

Step 37



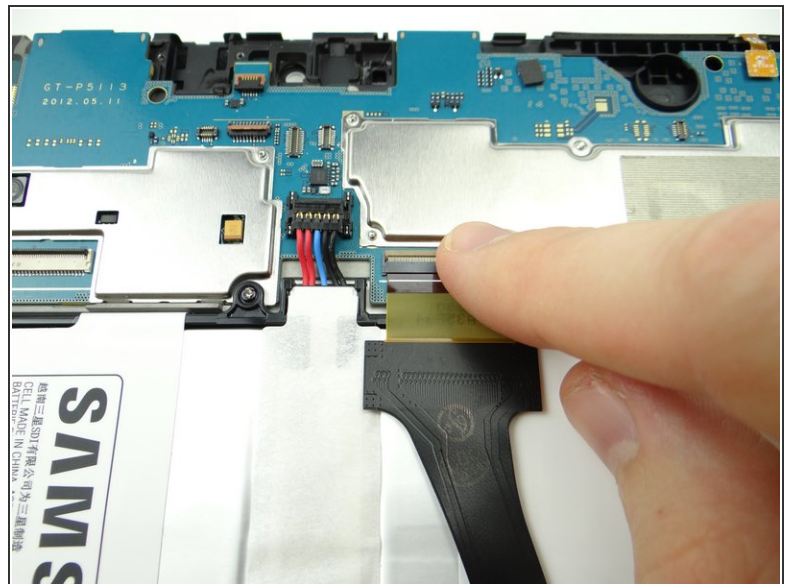
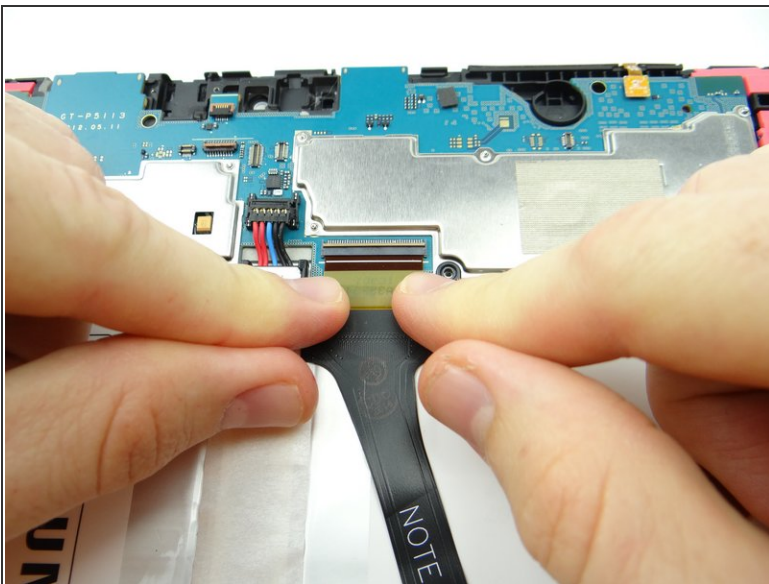
- Replace ten 3.0 mm #00 Phillips screws holding the battery from SLOT 3.

Step 38



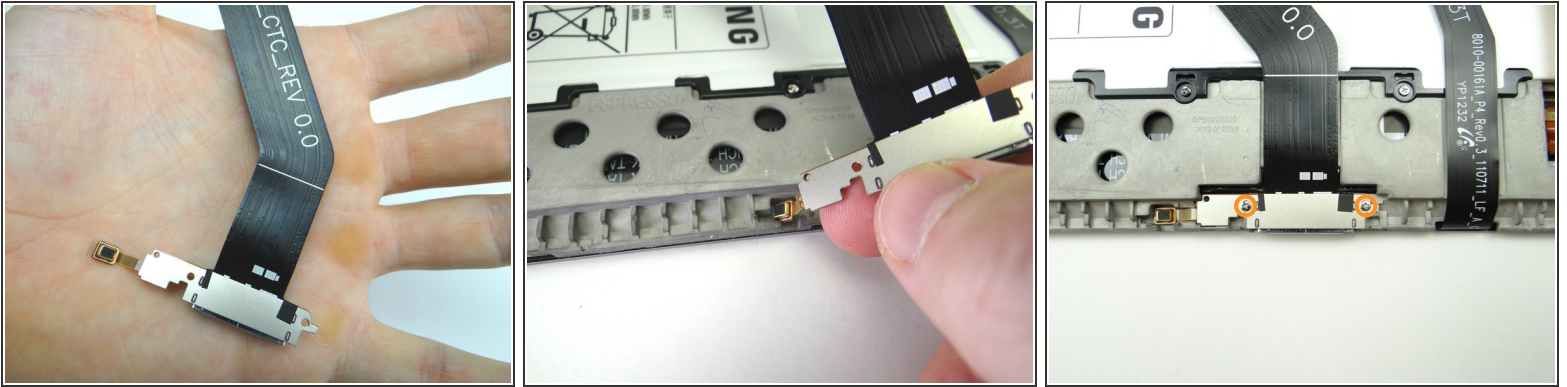
- Push LCD cable into open ZIF connector on logic board.
- Close ZIF connector black swing bar.

Step 39



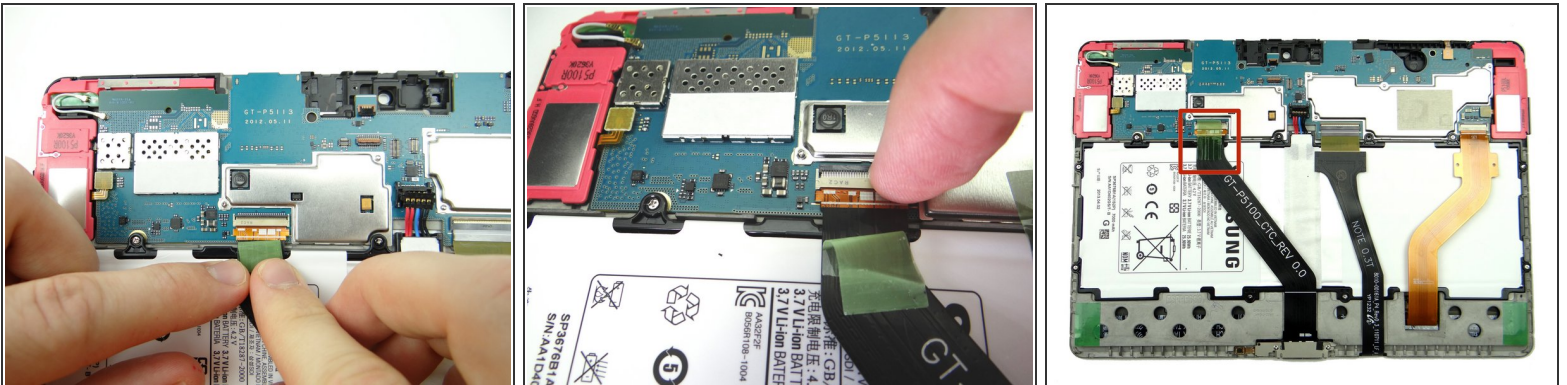
- Seat digitizer cable.
- Close ZIF connector cream-colored swing bar.

Step 40 — Replacement 2.8 - Charging Port Cable / Microphone



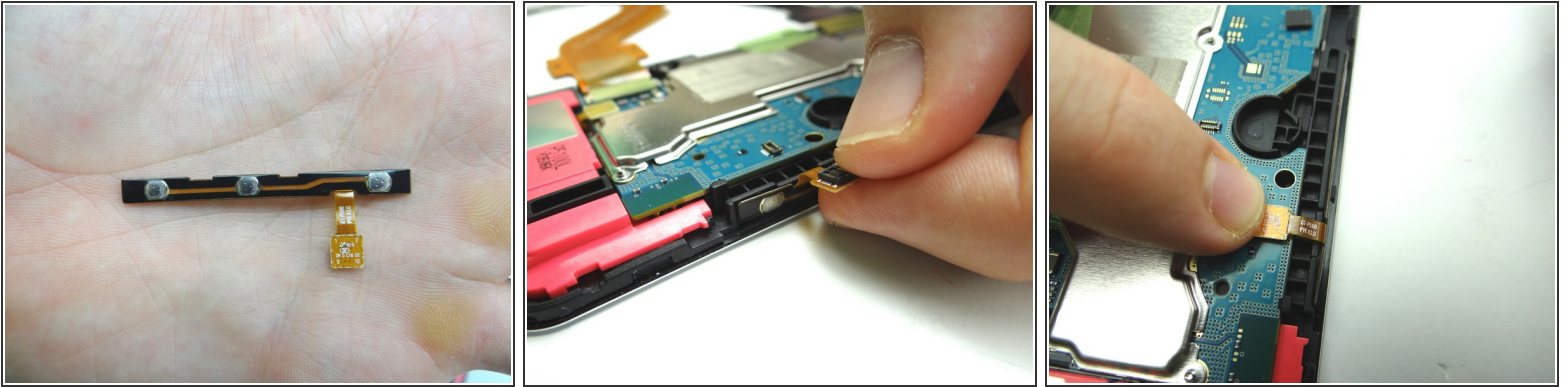
- From ZONE V, replace charging port cable & microphone:
- Picture 2: Seat microphone first then charging port.
- Picture 3: Replace two 2.9 mm #00 Phillips screws securing charging port from SLOT 2.

Step 41



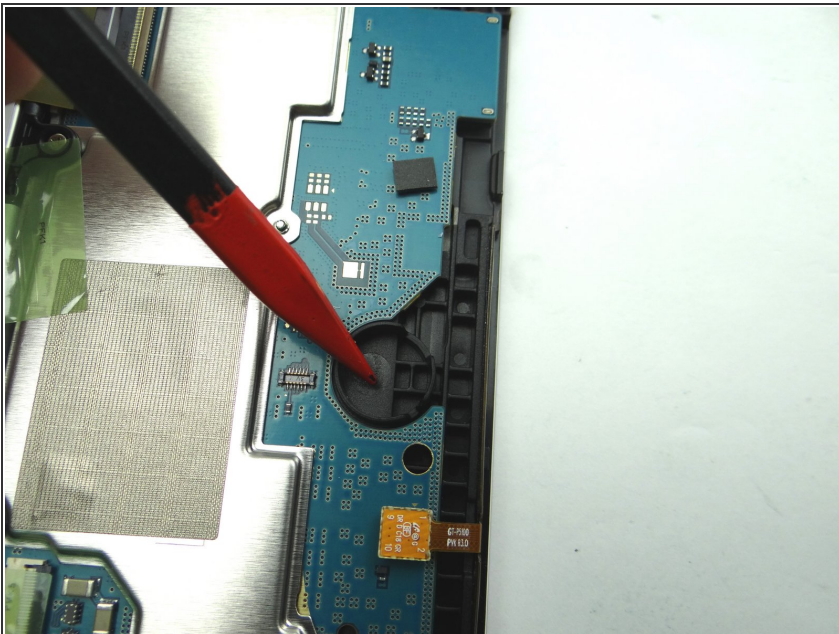
- Push charging port cable into open ZIF connector on logic board.
- Close ZIF connector black swing bar.
- Replace tape.

Step 42 — Replacement 2.7 - Power and Volume Buttons Cable



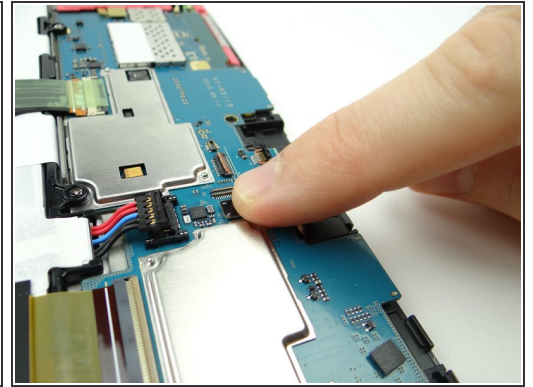
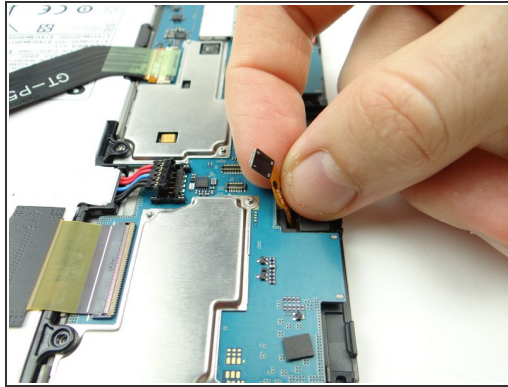
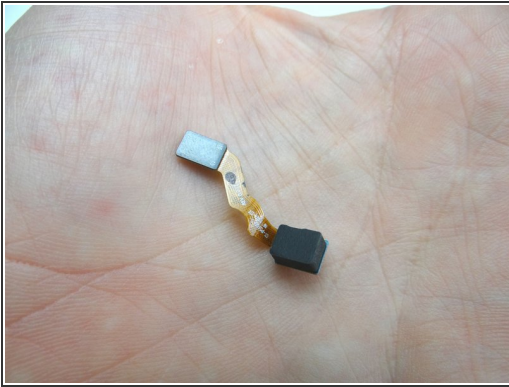
- From COMPARTMENT E, replace power / volume buttons cable.
- Push assembly firmly back into place to adhere to the frame.
- Connect cable to logic board.

Step 43 — Replacement 2.6 - Missing Vibrator



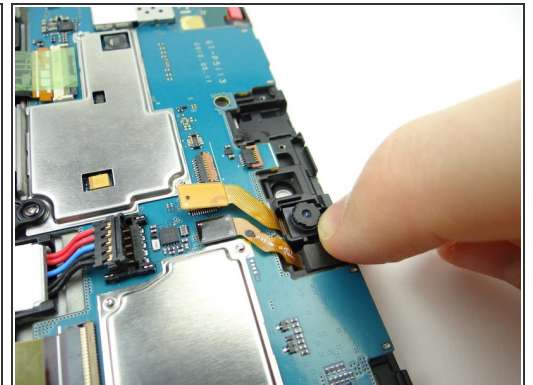
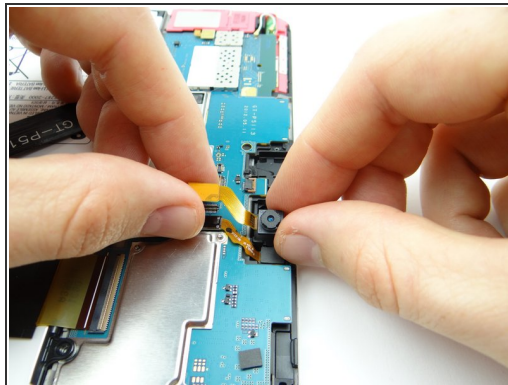
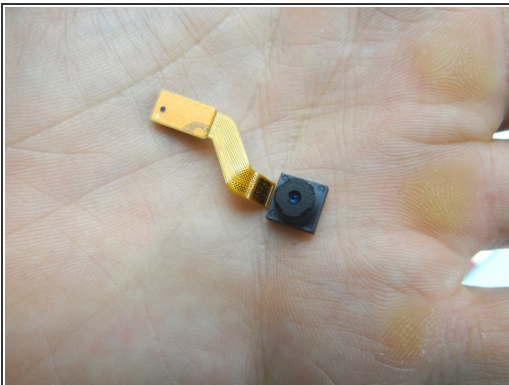
- Seat MISSING vibrator from COMPARTMENT F.
- Connect cable to logic board.

Step 44 — Replacement 2.5 - Sensor



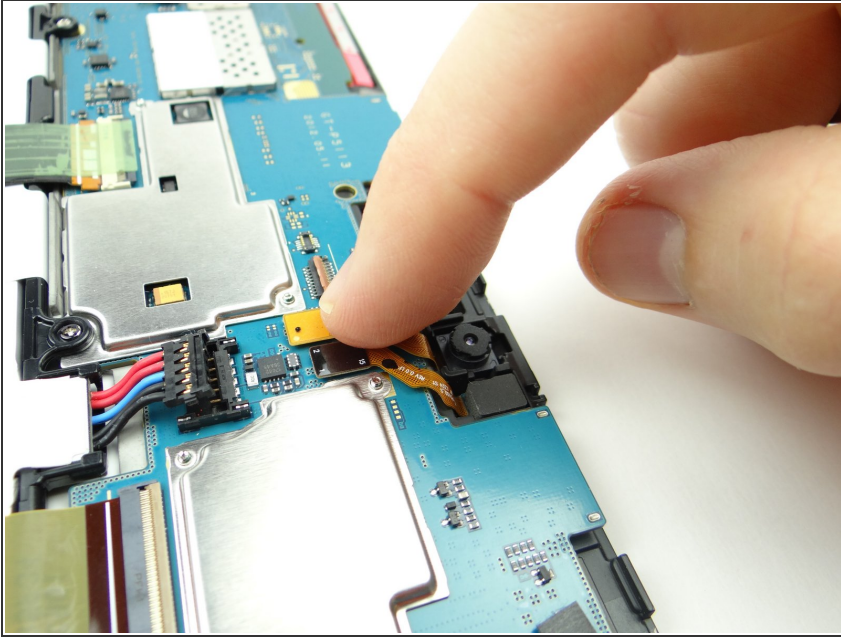
- From COMPARTMENT D:
- Push sensor back into its socket.
- Connect sensor cable to logic board.

Step 45 — Replacement 2.4 - Rear Camera



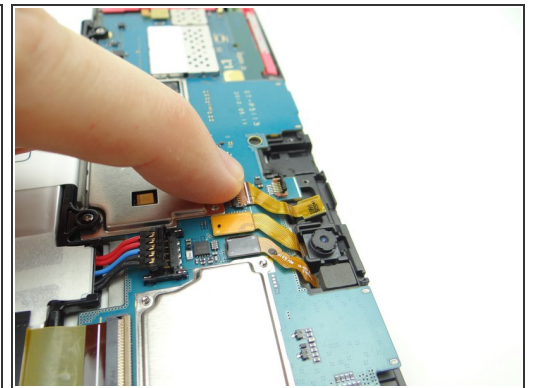
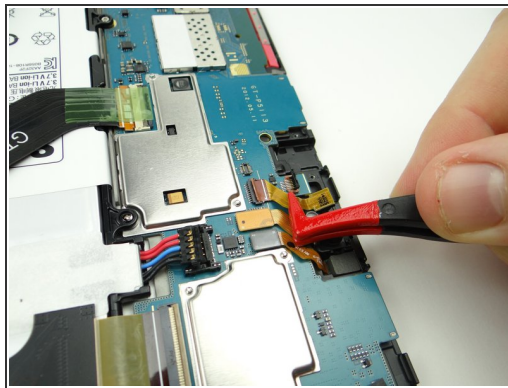
- Replace rear camera from COMPARTMENT D:
- Push camera into its socket.

Step 46



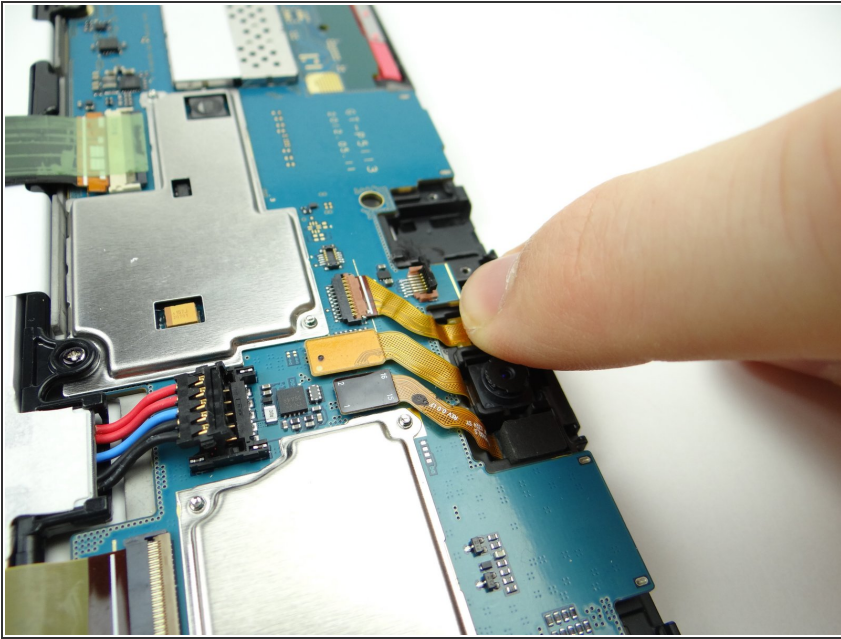
- Connect rear camera to logic board.

Step 47 — Replacement 2.3 - Front-facing Camera



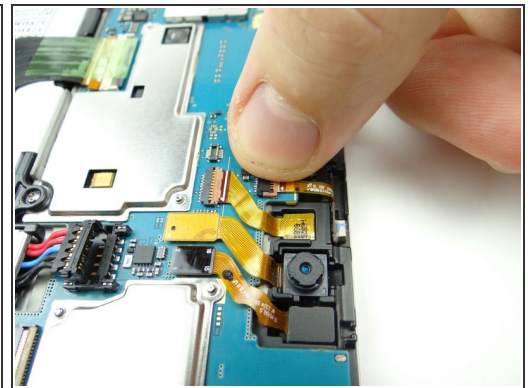
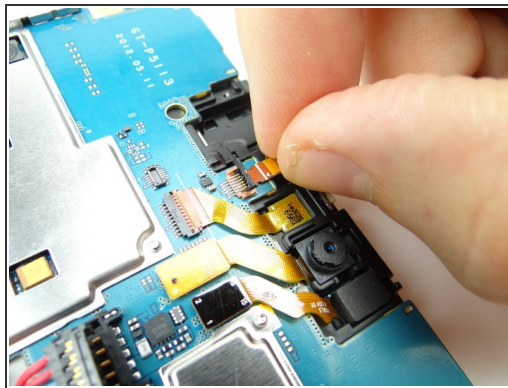
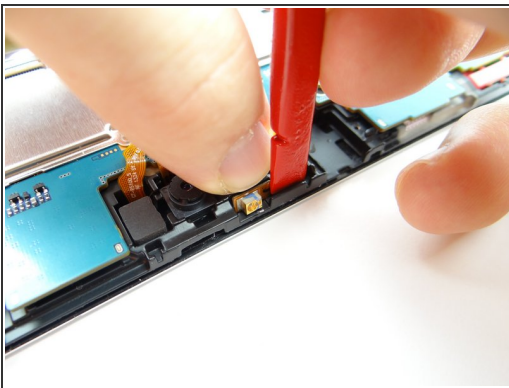
- Replace front-facing camera from COMPARTMENT C:
- Use plastic tweezers or your fingers to push front-facing camera cable into open ZIF connector.
- Close ZIF connector.

Step 48



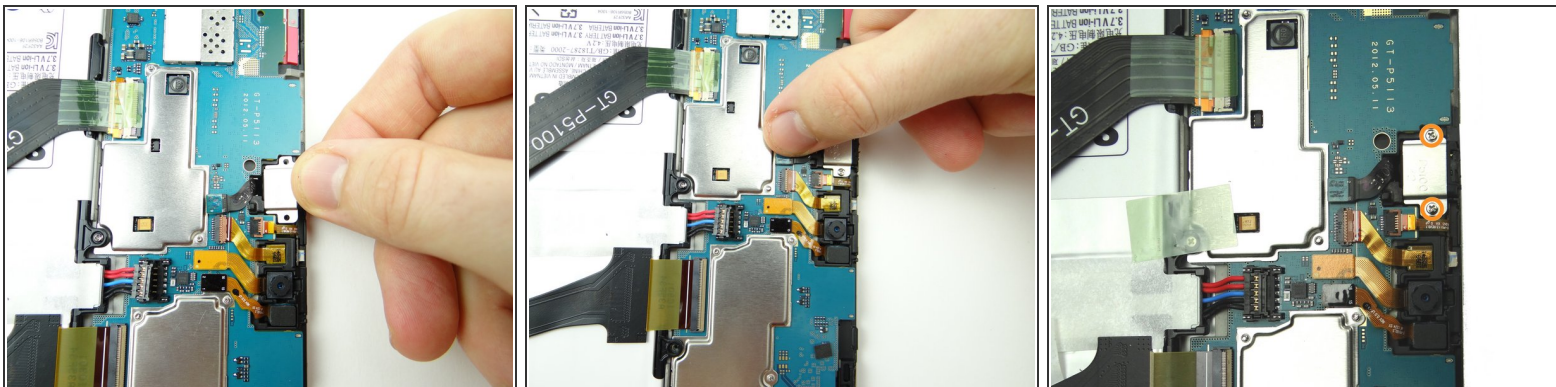
- Push front-facing camera into its socket.

Step 49 — Replacement 2.2 - Infrared



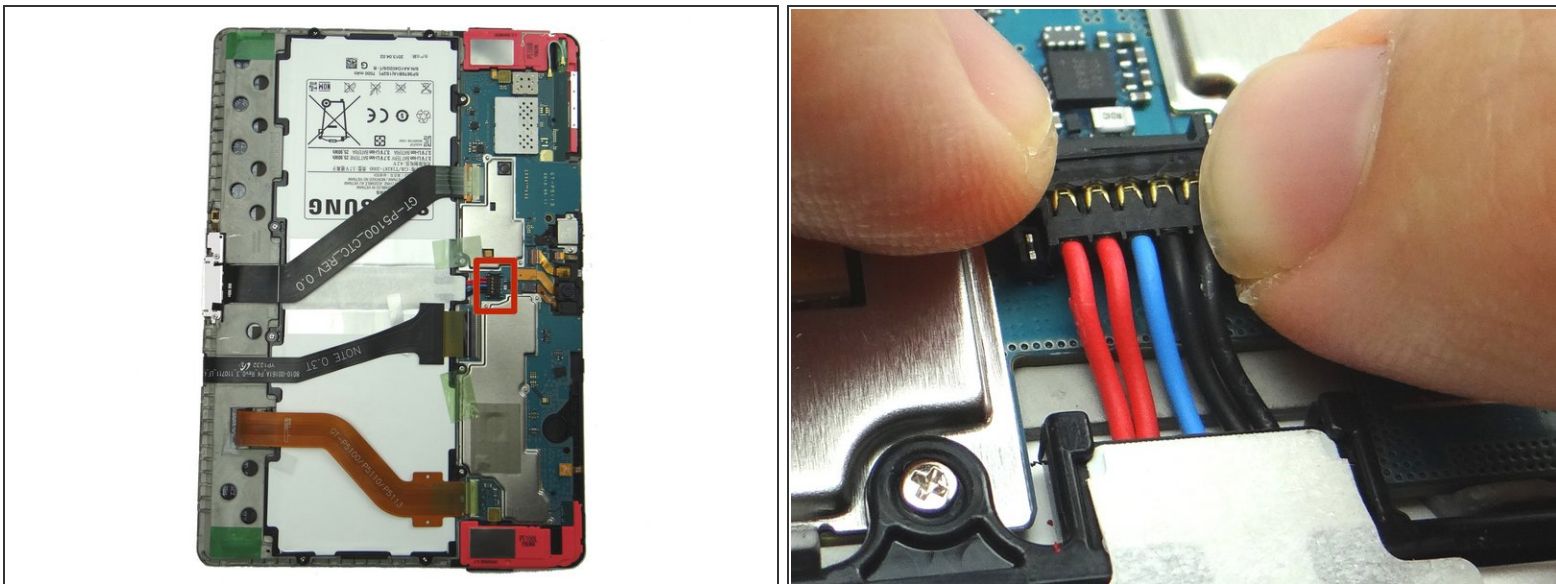
- Picture 1: Replace infrared sensor from COMPARTMENT C. Use flat end of spudger to push infrared cable against the mid-frame wall.
- Push cable into open ZIF connector.
- Close ZIF connector.

Step 50 — Replacement 2.1 - Headphone Jack



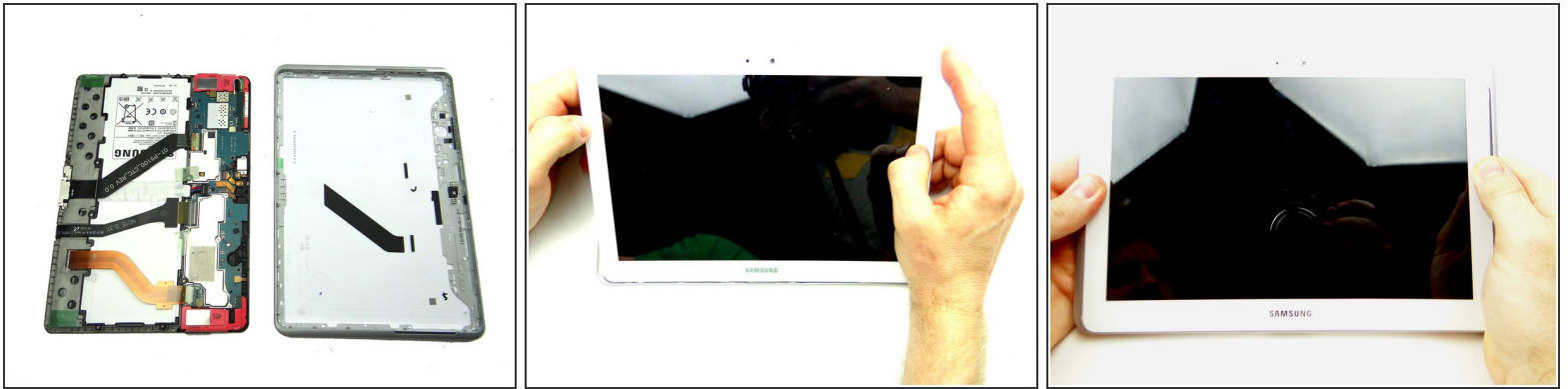
- Picture 1: Seat headphone jack from COMPARTMENT B.
- Picture 2: Connect cable to logic board.
- Picture 3: Replace two 3.0 mm #00 Phillips screws from the headset jack from SLOT 1.

Step 51 — Replacement 2.0 Connect Battery



- Push battery connector straight down into its socket.

Step 52 — Replacement 1 - Rear Case



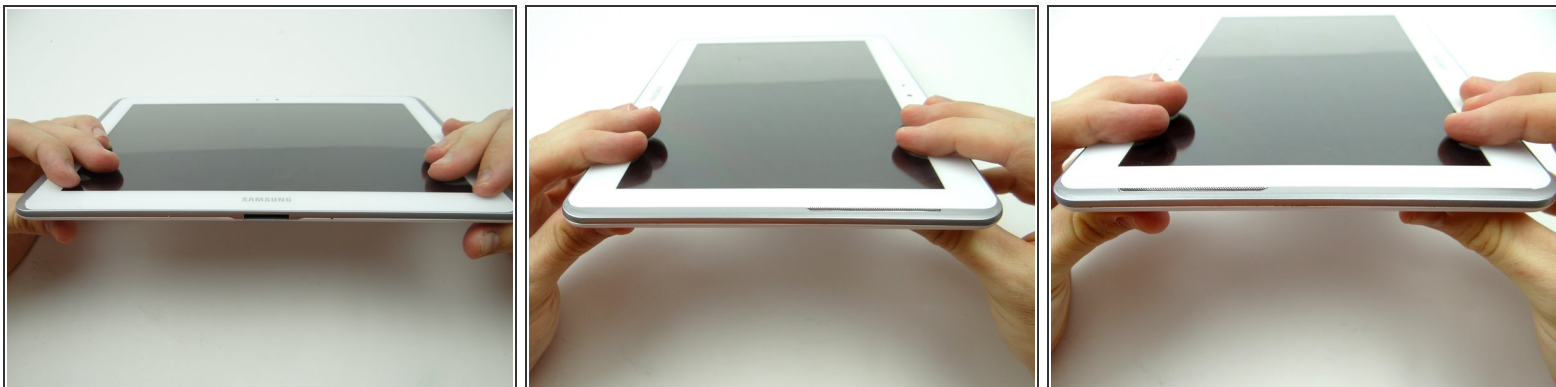
- Seat front panel on rear case, charging port first.
- Push center clips into place.

Step 53



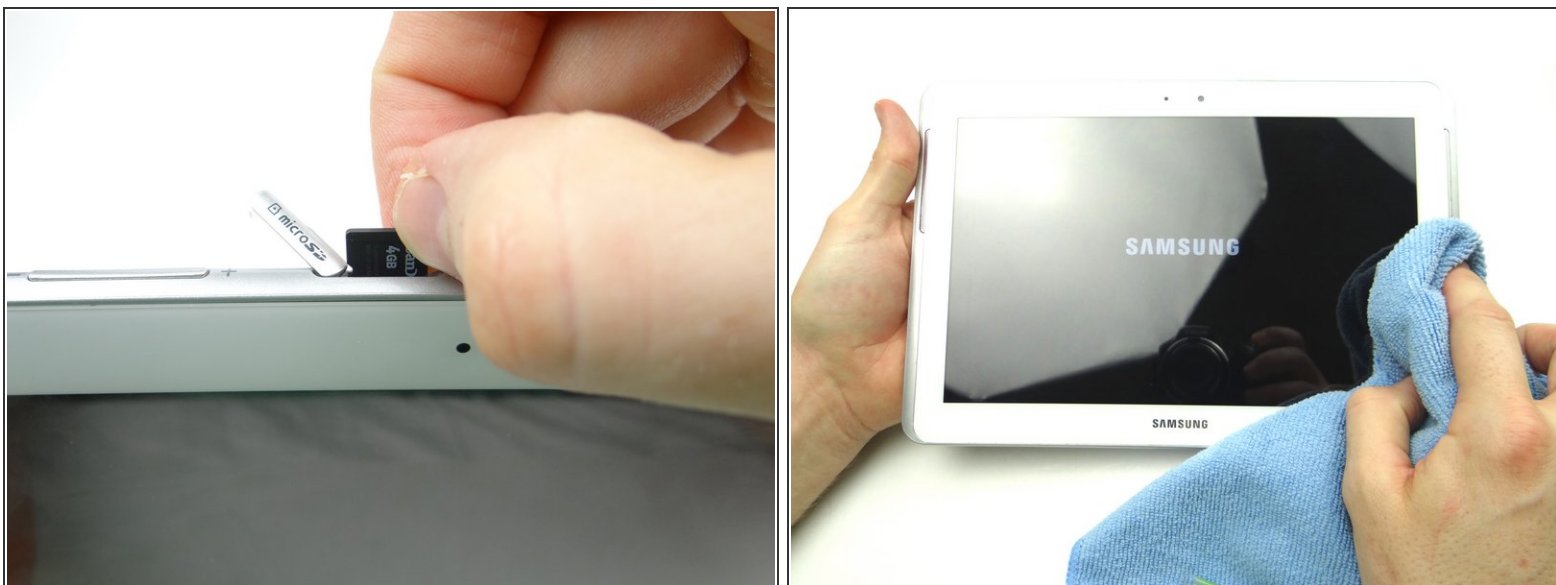
- Picture 1: Press charging port clips into place.
- Picture 2: Press clips in top corner into place.
- Picture 3: Turn tablet over and continue pressing clips into place.

Step 54



- Examine all edges to ensure all clips are seated and the display is flush with the rear case.

Step 55



- Replace SD card from COMPARTMENT A.
- Power up and test device.