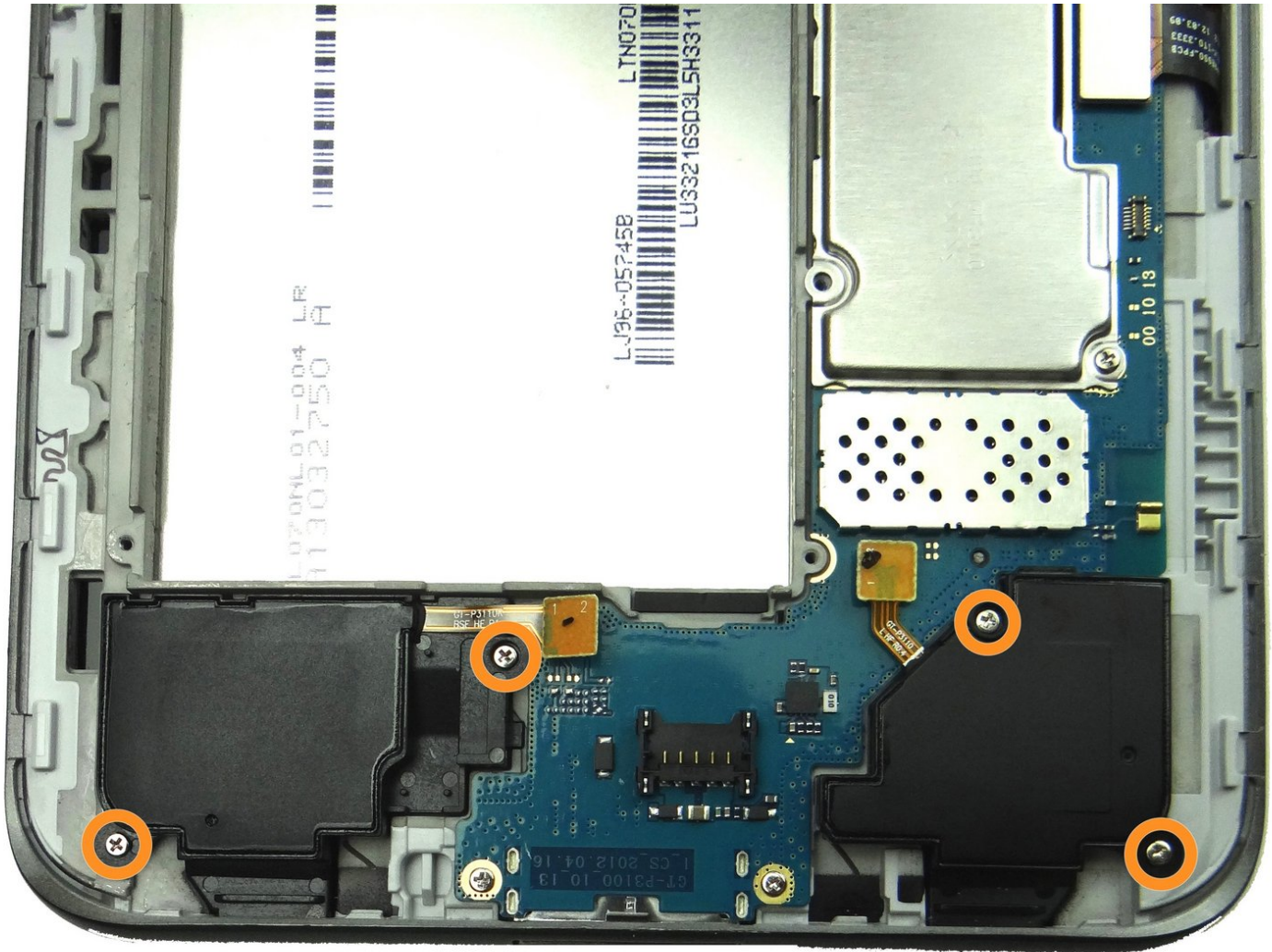


CELLPHONESANDBOX

Manual 04 - Loudspeakers

Written By: James Linder

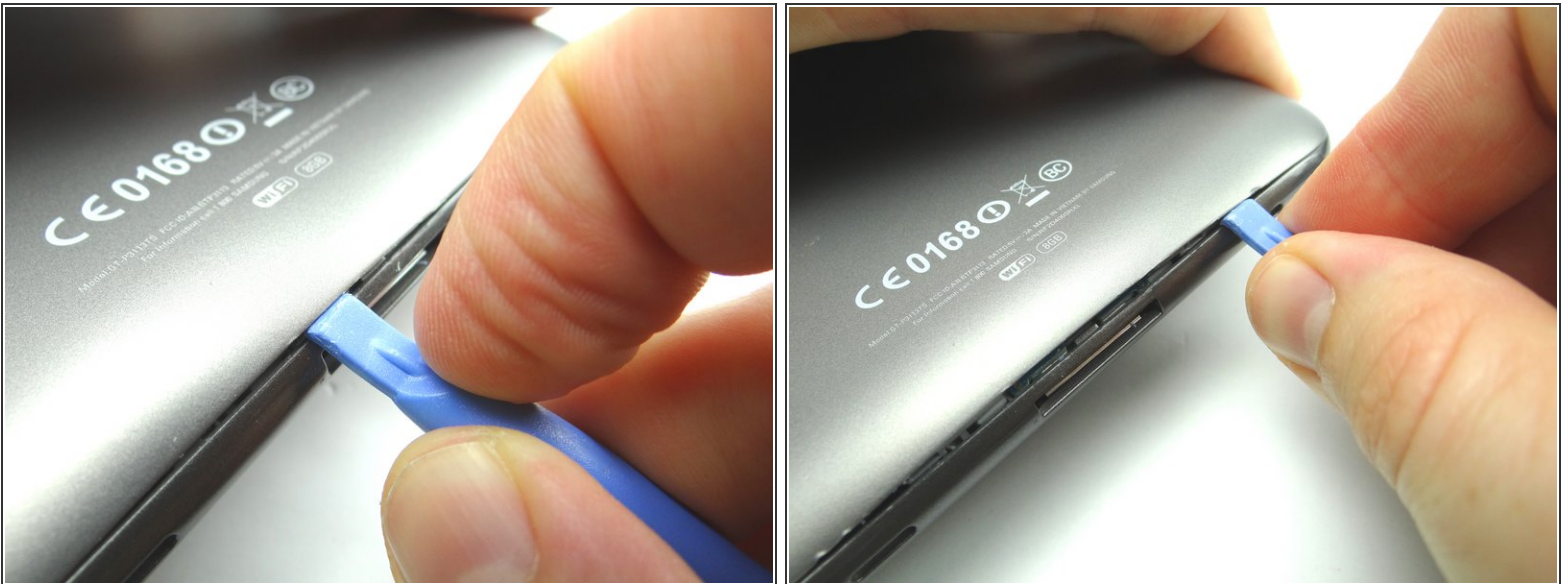


Step 1 — Removal 1 - Battery Cover



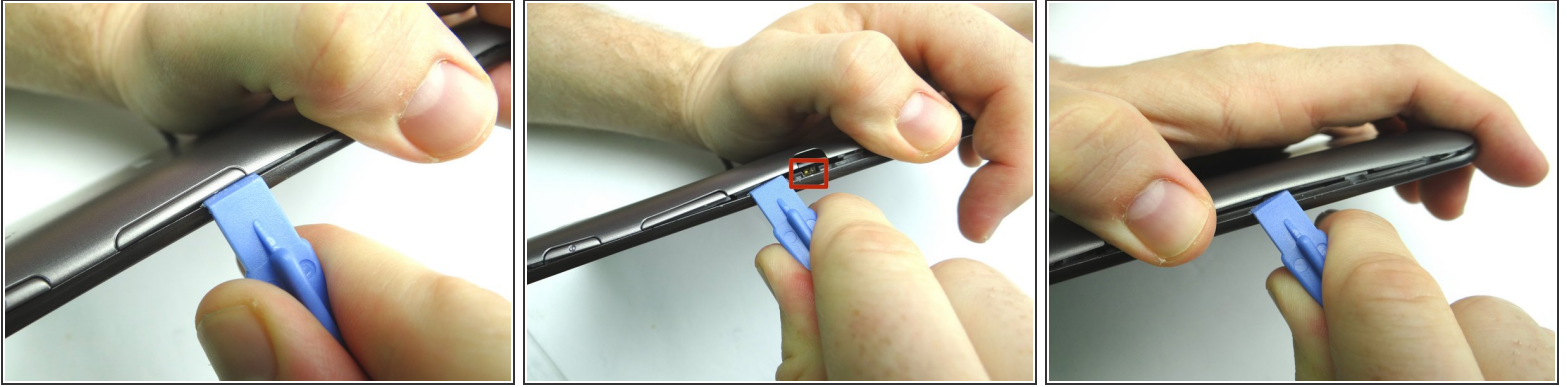
- Power down device.
- Remove SD card. Place in COMPARTMENT A.
- In the next few steps, you'll be removing the battery cover by freeing the clips marked in Picture 3.

Step 2



- Insert the blue pry tool face down, above the left edge of the charging port, between the battery cover and front panel.
- Sweep carefully to the right.

Step 3

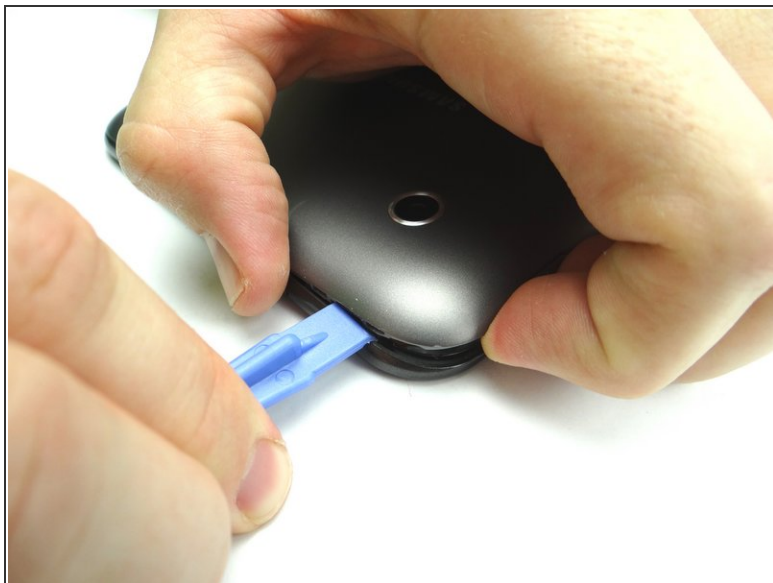
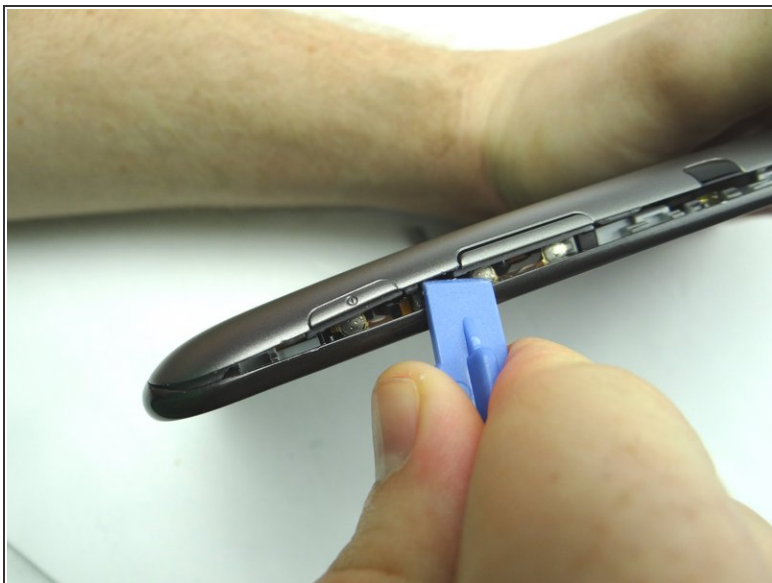


- Picture 1: Insert wide blue pry tool below the bottom half of the volume rocker.
- Picture 2: Sweep between the volume rocker and infrared sensor cover. Twist counter-clockwise to pop up. Grab the battery cover with your thumb to hold it open.

⚠ Don't sweep past the infrared sensor (red square in Picture 2).

- Picture 3: Reinsert the wide blue pry tool half an inch past the infrared sensor and continue working your way down towards the corner. Continue peeling up with your thumb in the opposite hand.

Step 4



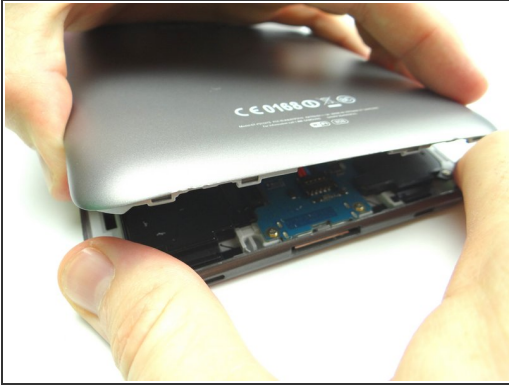
- Picture 1: Insert between the volume rocker and power button. Gently twist to pry up.
- Picture 2: Insert near the corner as shown and gently twist to pry up.

Step 5



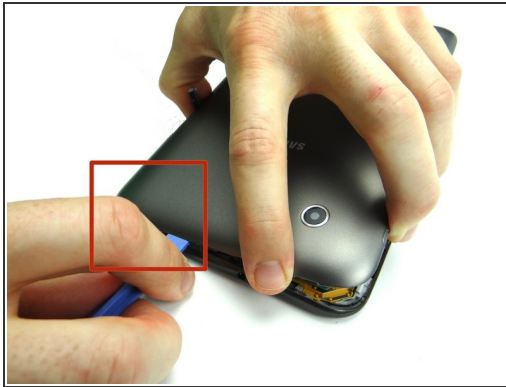
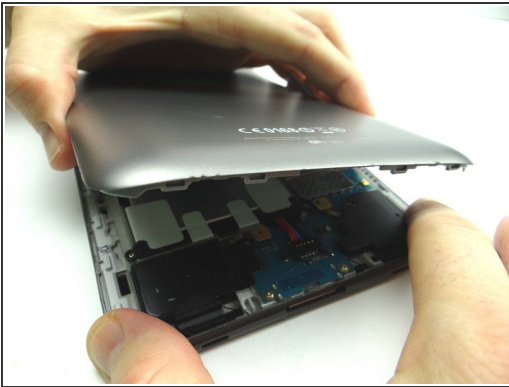
- Picture 1: Insert near the corner as shown and gently twist to pry up.
- Picture 2: Sweep along the bottom with the blue pry tool while peeling up with your fingers.

Step 6



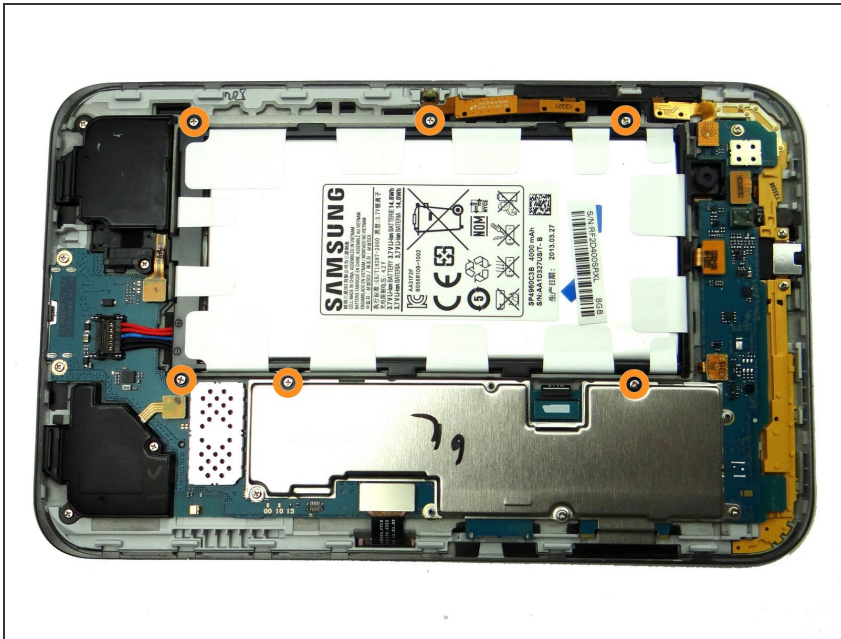
- Picture 1: Pull up the battery cover until you feel tension near the SD card slot and/or volume rocker:
- Picture 2: Sweep blue pry tool under SD slot to free the clips.
- Picture 3: Guide the volume rocker and power buttons up with your fingers.

Step 7



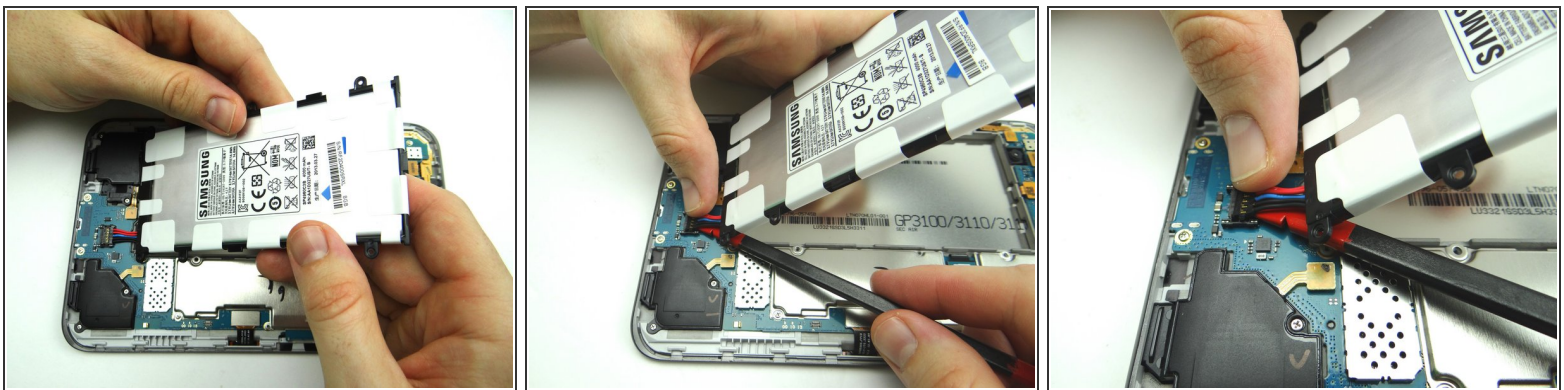
- Picture 1: The cover may get stuck in the upper-right corner.
- Picture 2: Bring the cover back down until it's nearly flat. Work your way around the corner with the blue pry tool to finish separating the battery cover from the front panel.
- Picture 3: Place battery cover in ZONE V.

Step 8 — Removal 2.0 - Battery



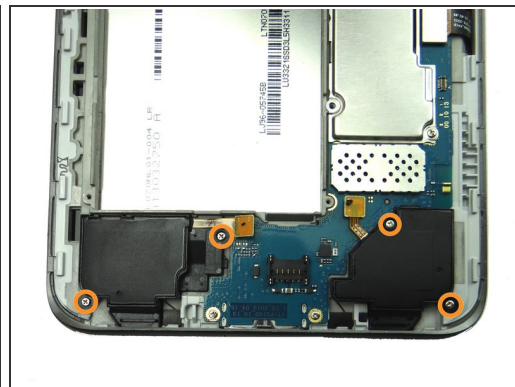
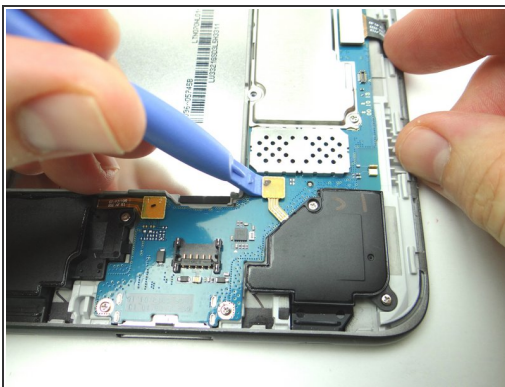
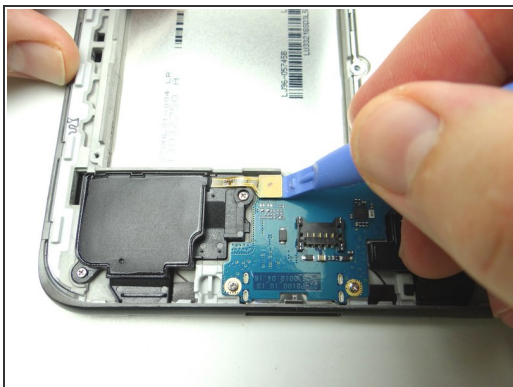
- Remove six 3.4 mm Phillips #00 screws holding down the battery. Place in SLOT 1.

Step 9



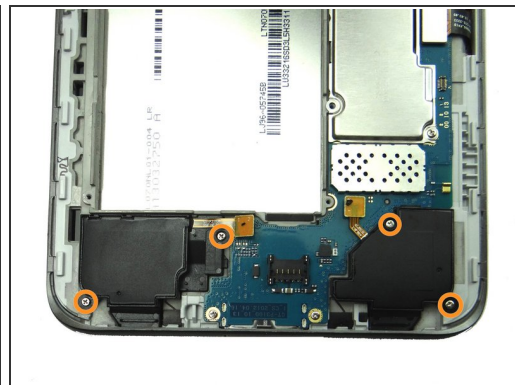
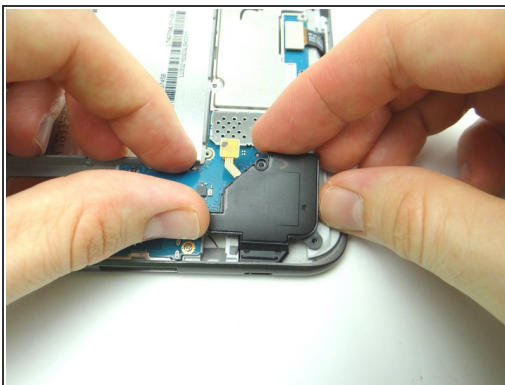
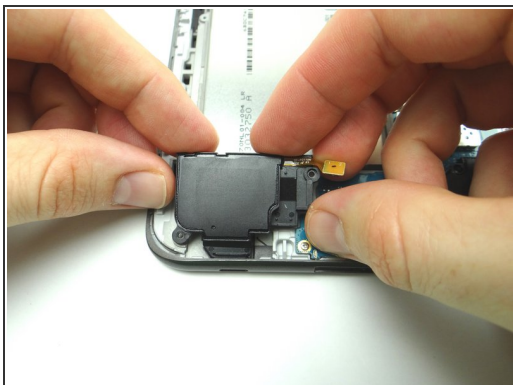
- Picture 1: Lift the battery. Hold it at a 45° angle.
- Pictures 1 & 2: Use the flat end of the spudger to wedge under the battery connector. With your thumb on top, lift straight up to disconnect the battery.
- Place battery in ZONE V.

Step 10 — Removal 2.2 - Loudspeakers



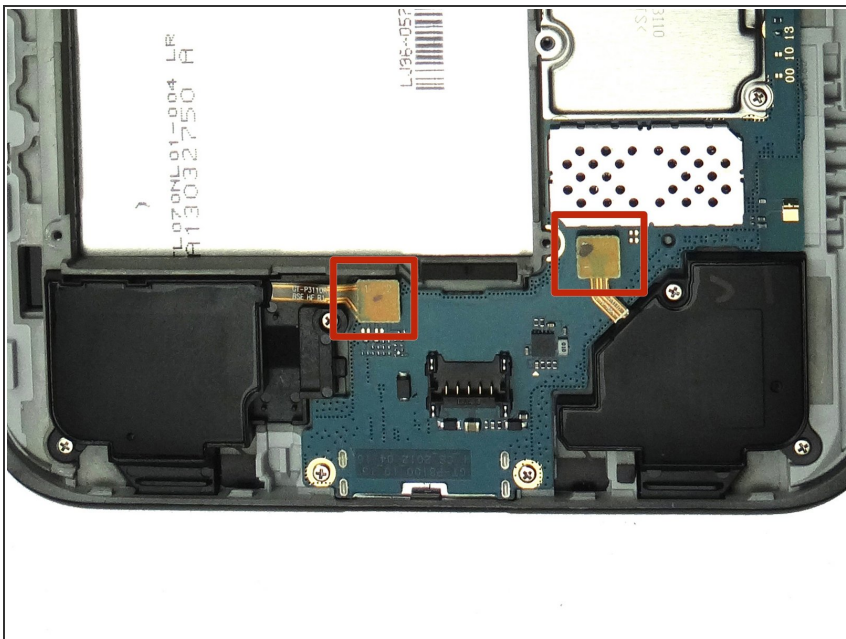
- Use the blue pry tool to disconnect the left and right speakers.
- Remove four 3.4 mm #00 Phillips screws. Place in SLOT 1.
- Place speakers in ZONE I.

Step 11 — Replacement 2.2 - Loudspeakers



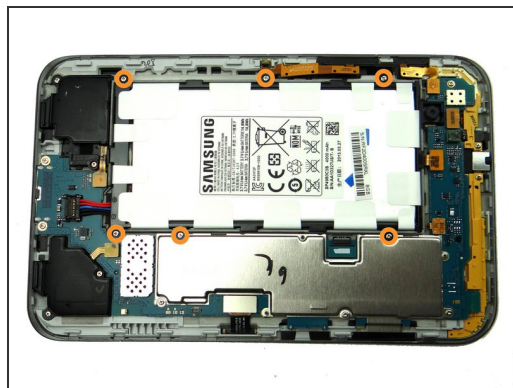
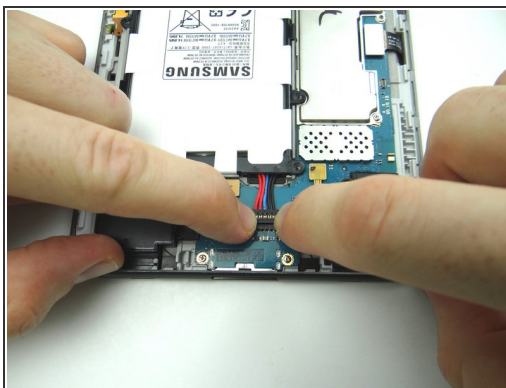
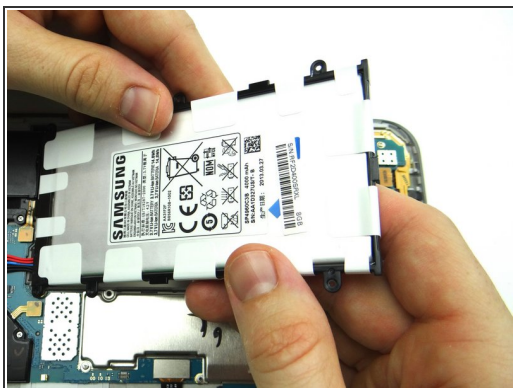
- Seat the left and right speakers.
- Replace four 3.4 mm #00 Phillips screws from SLOT 1.

Step 12



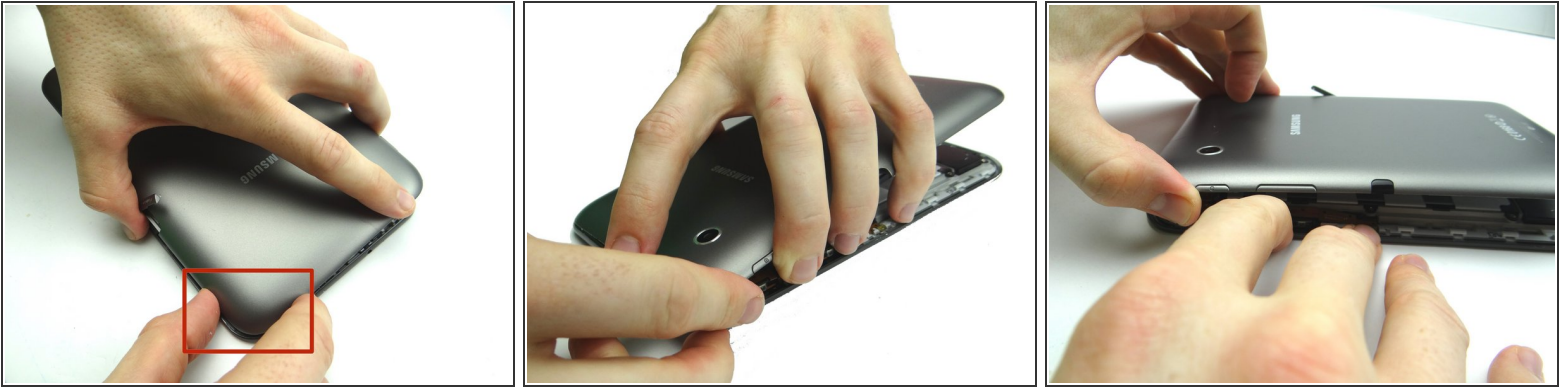
- Connect both speakers.

Step 13 — Replacement 2.0 Battery



- Seat the battery.
- Connect the battery by pushing straight down on the entirety of the connector.
- Replace six 3.4 mm Phillips #00 screws from SLOT 1.

Step 14 — Replacement 1 - Battery Cover



- Picture 1: Seat this corner first.
- Picture 2: Continue seating top edge.
- Picture 3: Make sure the power button and volume rocker seat properly and you push the sides into place.

Step 15



- Picture 1: Close the bottom edge
- Picture 2: Continue pushing all clips into place.
- Picture 3: Check each edge to make sure the clips are pushed down. Double-check near the charging port.

Step 16



- Replace SD card from COMPARTMENT A.
- Power up the device and test the replacement part or parts.