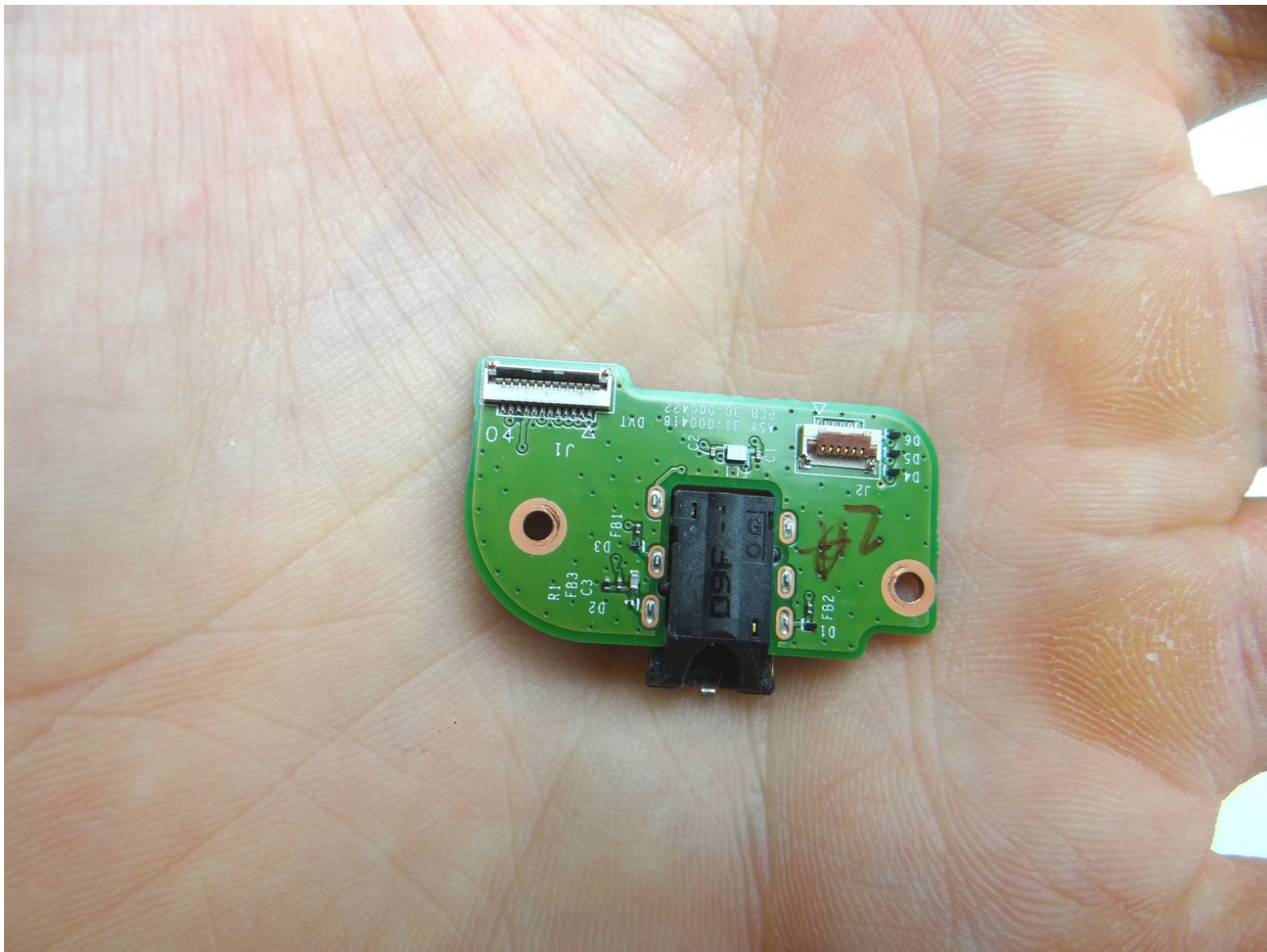


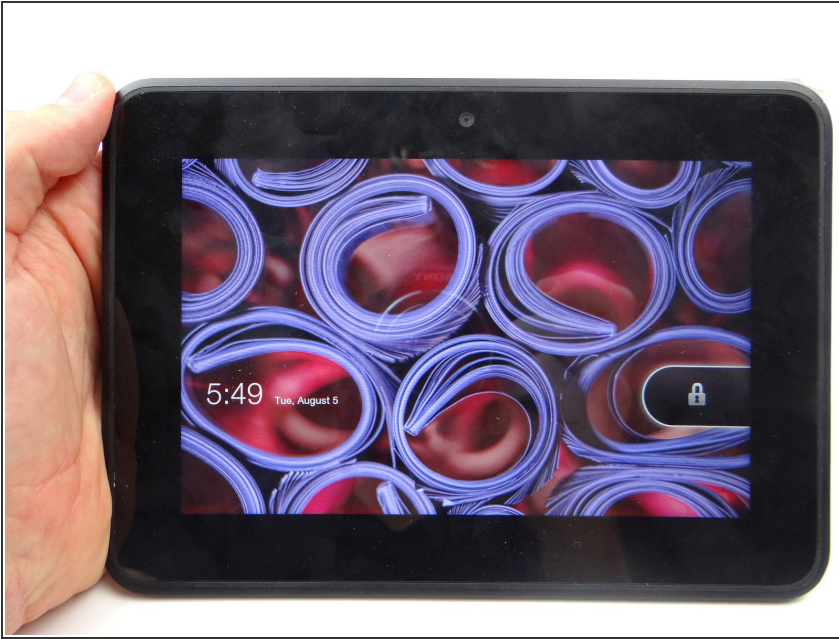
CELLPHONESANDBOX

Manual 07 - Headphone Jack

Written By: James Linder



Step 1 — Removal 1 - Battery Cover



- Power down device.

Step 2



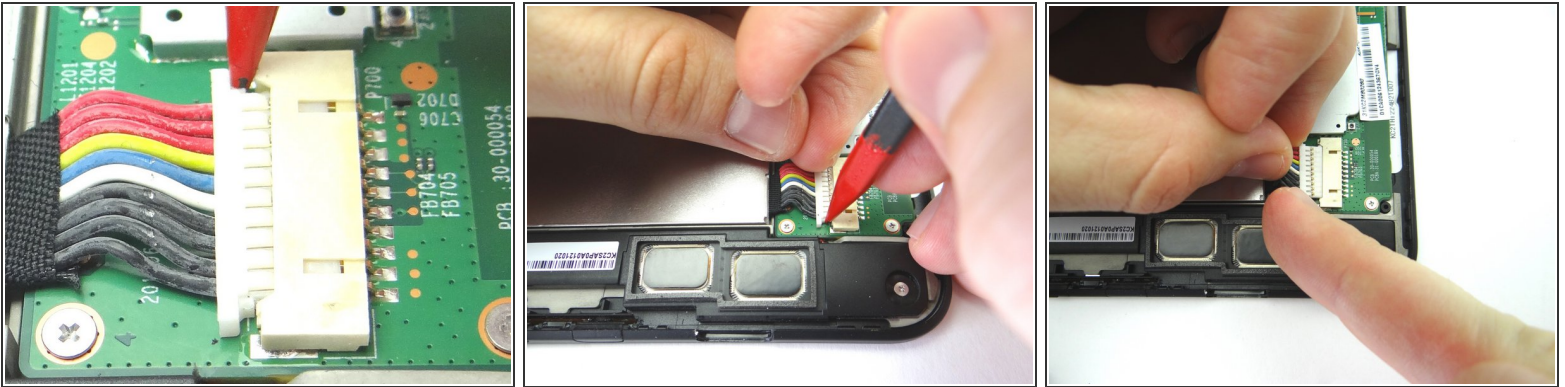
- Picture 1: Insert the blue pry tool between the front panel and battery cover, with the the tip face down, an inch left of the charging port. Pop up the cover just enough to reinsert the blue pry tool face up.
- Pictures 2 & 3: Insert the blue pry tool face up an inch left of the charging port. Twist until you can grab the battery cover with your fingers.

Step 3



- Work your way around the perimeter with your fingers. Continue peeling the battery cover up until it's free.
- Place battery cover in ZONE V.

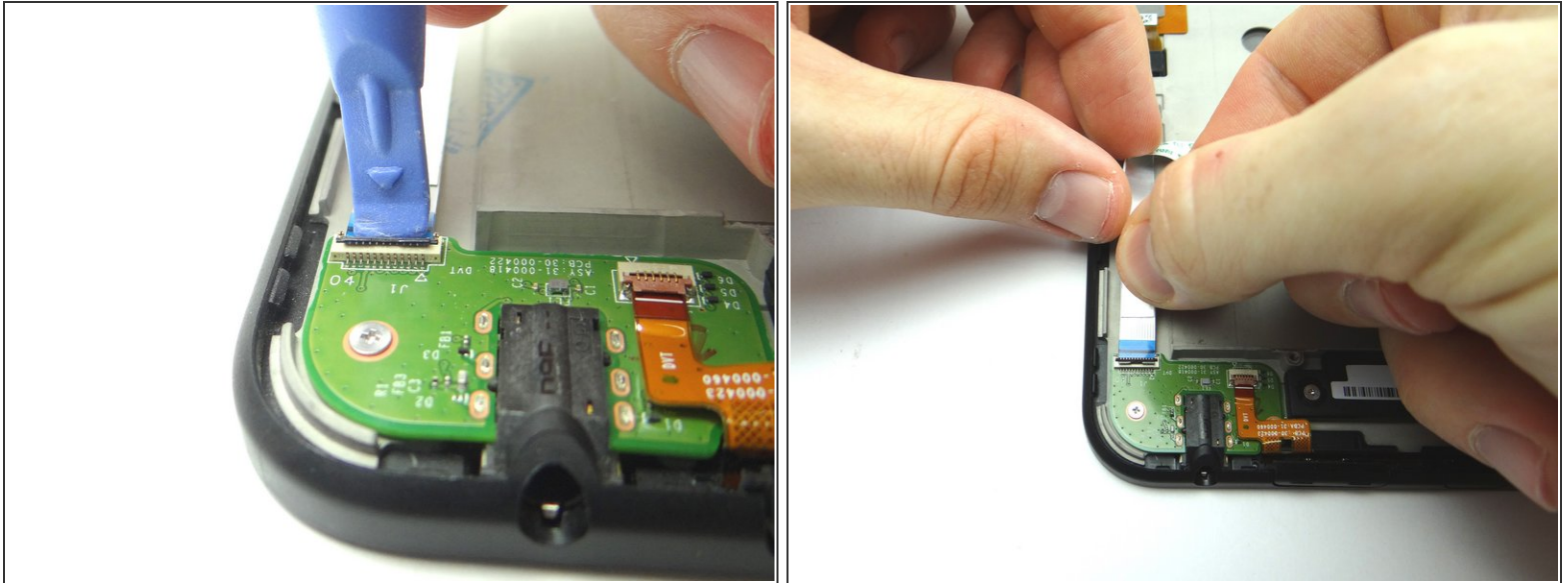
Step 4 — Removal 2.1 - Disconnect Battery



⚠ The battery connector is stiff and fragile:

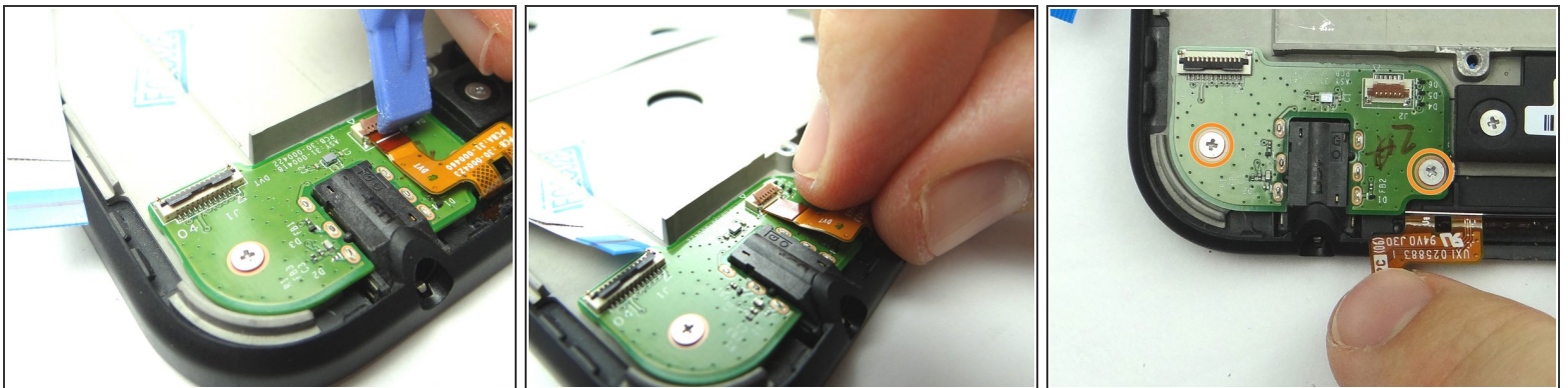
- Picture 1: Use the pointed end of the spudger to push back the top of the battery connector slightly.
- Picture 2: Use your finger to put mild tension at the top of the connector while using the spudger to push back the bottom of the connector.
- Picture 3: Finish removing the connector with your fingers.

Step 5 — Removal 4.4 - Headphone Jack



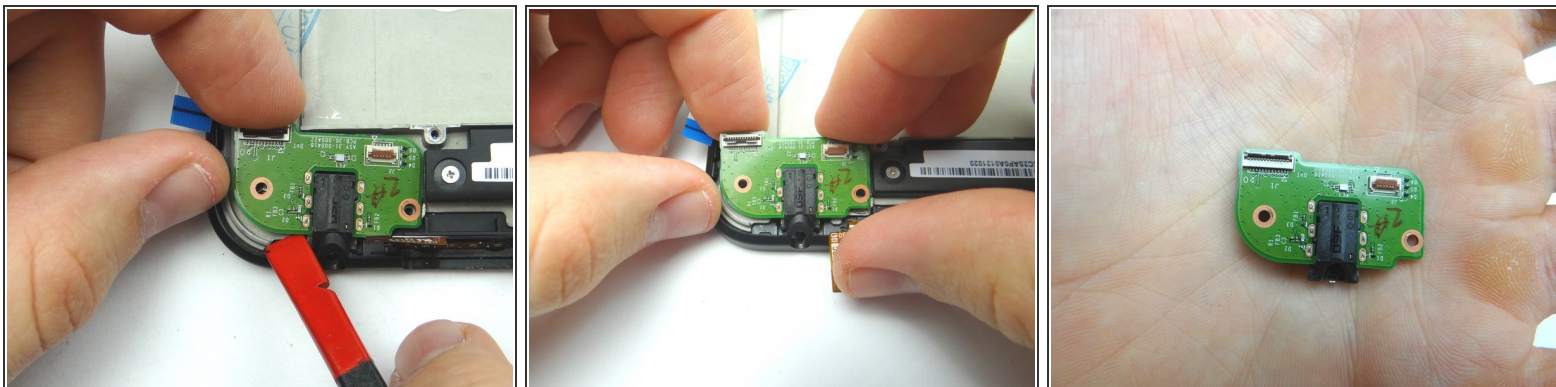
- Picture 1: Use blue pry tool to open ZIF connector.
- Picture 2: Remove headphone jack cable with your fingers.

Step 6



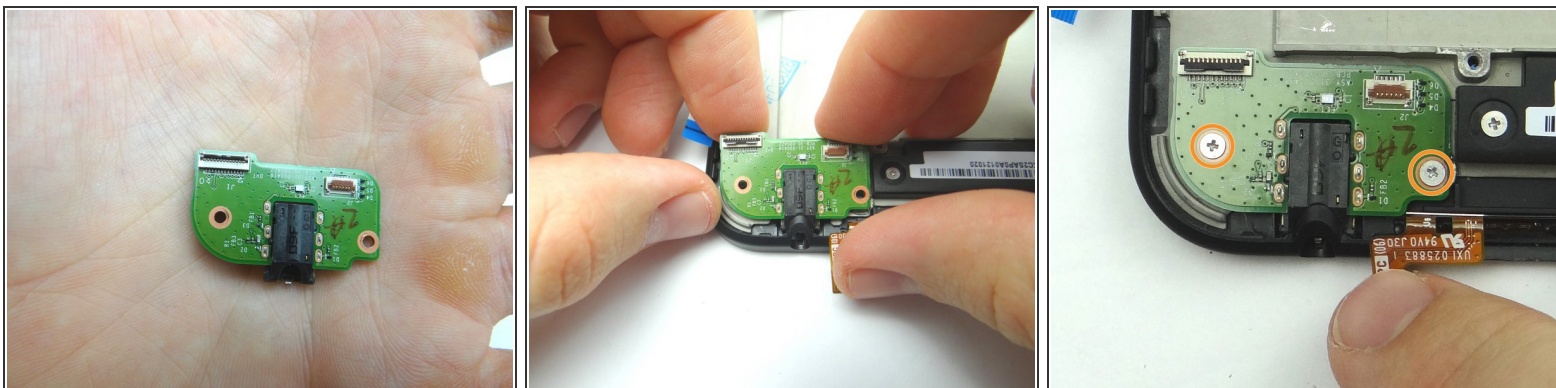
- Picture 1: Open ZIF connector holding volume & power buttons cable.
- Picture 2: Remove cable with your fingers.
- Picture 3: Remove two 3.1 mm #00 Phillips screws. Place in SLOT 4.

Step 7



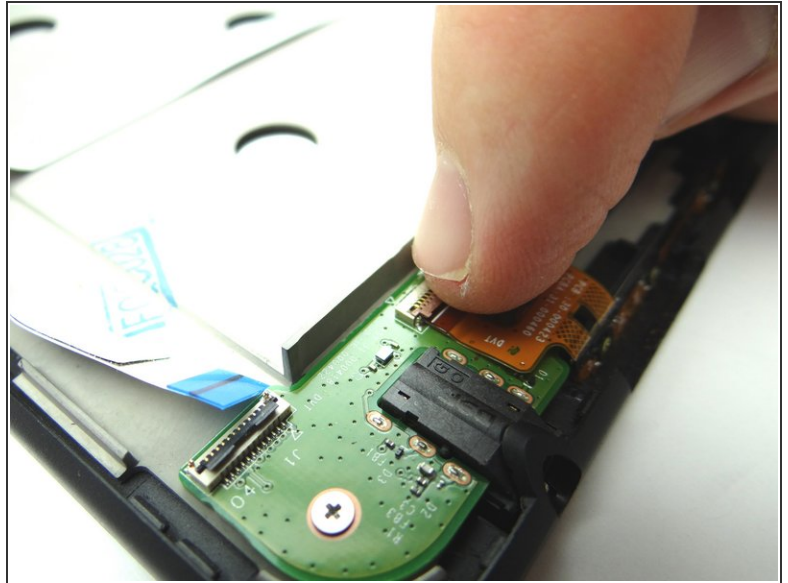
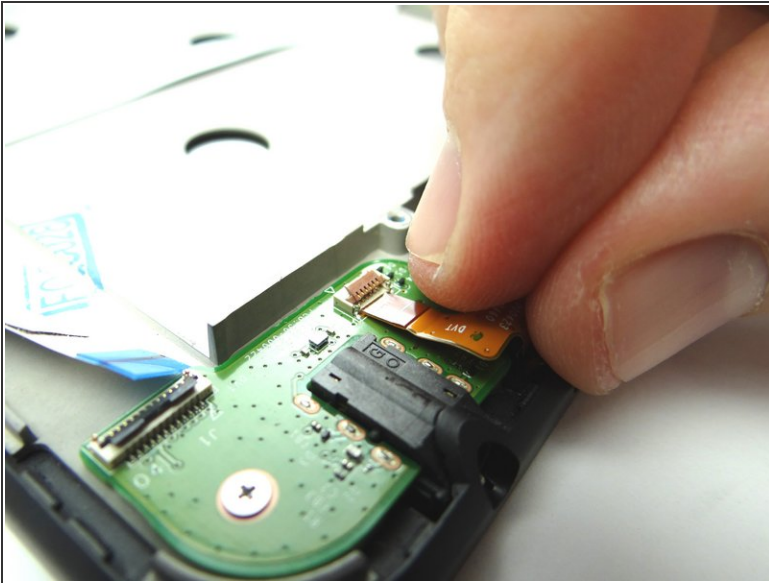
- Use flat end of spudger and your fingers to pry up headphone jack board.
- Remove it and place in COMPARTMENT D.

Step 8 — Replacement 4.4 - Headphone Jack



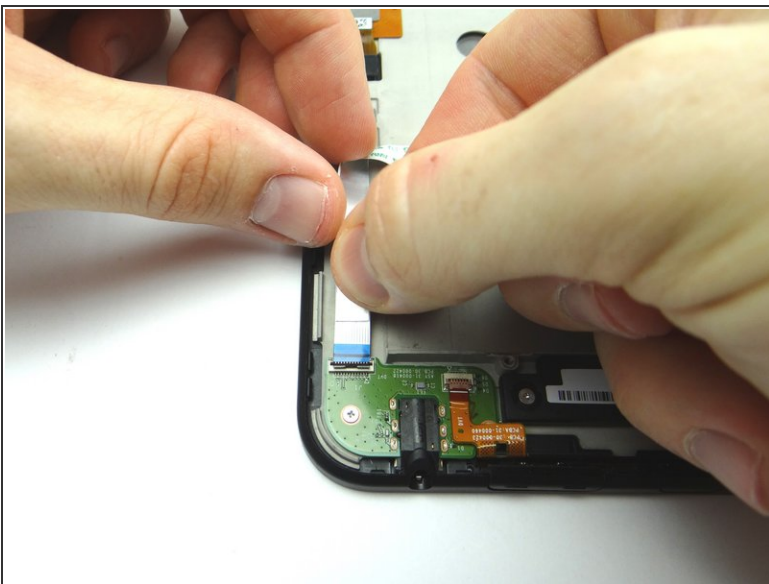
- From COMPARTMENT D, replace headphone jack board.
- Replace two 3.1 mm #00 Phillips screws from SLOT 4.

Step 9



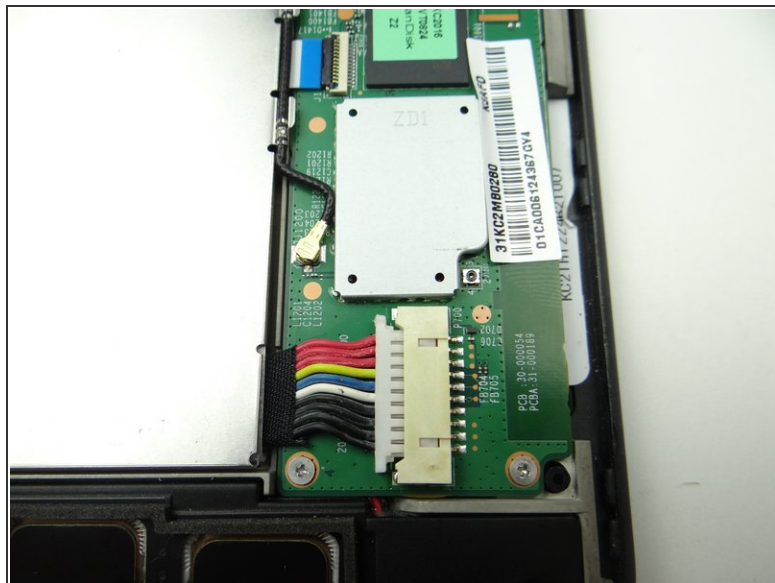
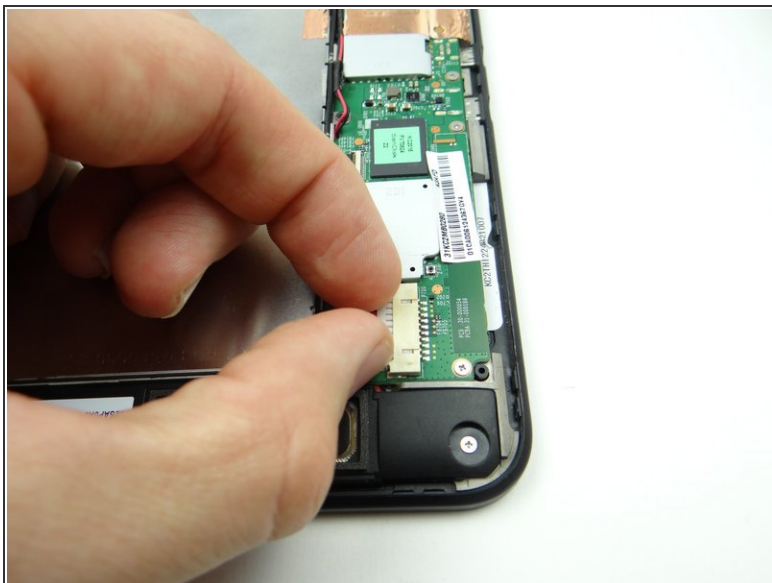
- Push power and volume buttons cable head into open ZIF connector.
- Close ZIF connector

Step 10



- Push headphone jack connection cable into open ZIF connector.
- Close ZIF connector.

Step 11 — Replacement 2.1 - Connect Battery



- Picture 1: Push both sides of battery connector evenly into the socket.
- Picture 2: The connector should look like this (cannot see gold contacts) if seated properly.

Step 12 — Replacement 1 - Battery Cover



- Push battery cover back onto Kindle.

Step 13



- Pictures 1 & 2: Check around the edges for gaps between the battery cover and front panel.
- Picture 3: Power up and test device.