

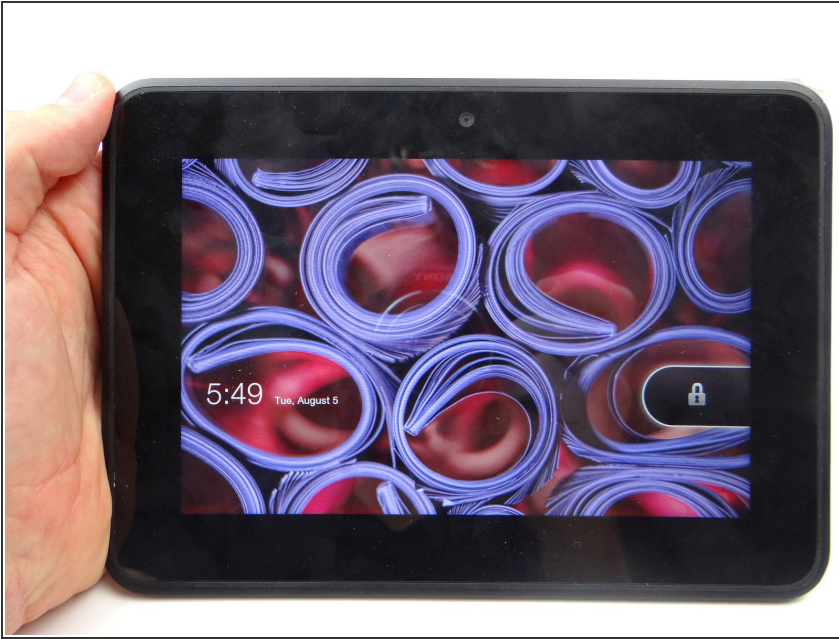
CELLPHONESANDBOX

Manual 11 - Display Assembly

Written By: James Linder



Step 1 — Removal 1 - Battery Cover



- Power down device.

Step 2



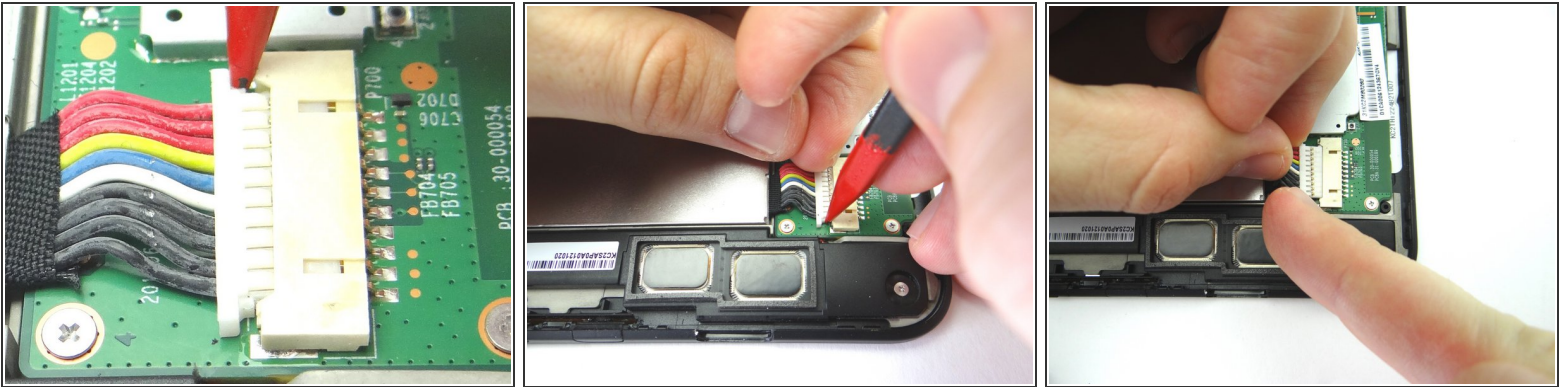
- Picture 1: Insert the blue pry tool between the front panel and battery cover, with the the tip face down, an inch left of the charging port. Pop up the cover just enough to reinsert the blue pry tool face up.
- Pictures 2 & 3: Insert the blue pry tool face up an inch left of the charging port. Twist until you can grab the battery cover with your fingers.

Step 3



- Work your way around the perimeter with your fingers. Continue peeling the battery cover up until it's free.
- Place battery cover in ZONE V.

Step 4 — Removal 2.1 - Disconnect Battery



⚠ The battery connector is stiff and fragile:

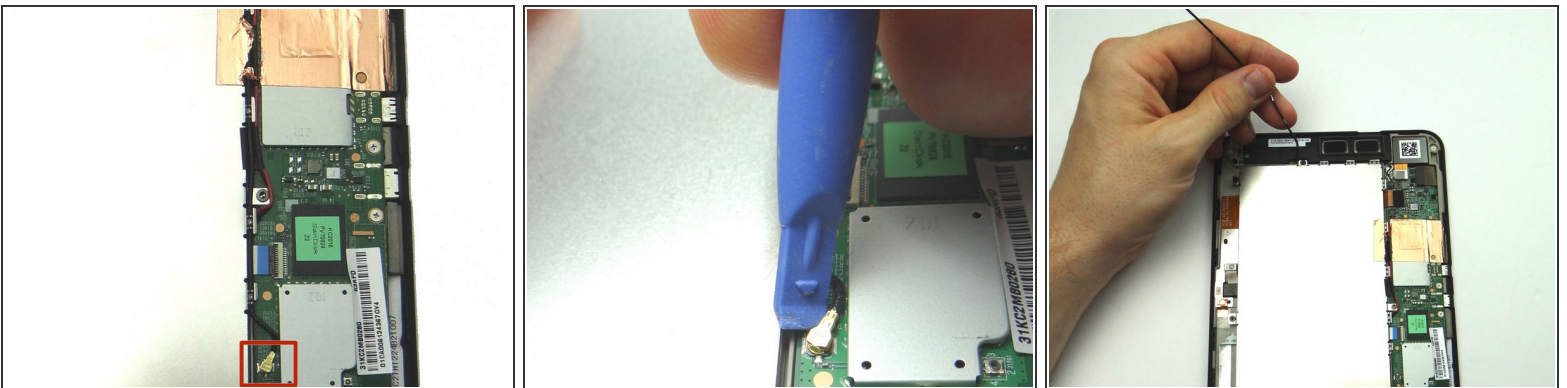
- Picture 1: Use the pointed end of the spudger to push back the top of the battery connector slightly.
- Picture 2: Use your finger to put mild tension at the top of the connector while using the spudger to push back the bottom of the connector.
- Picture 3: Finish removing the connector with your fingers.

Step 5 — Removal 2.2 - Remove Battery



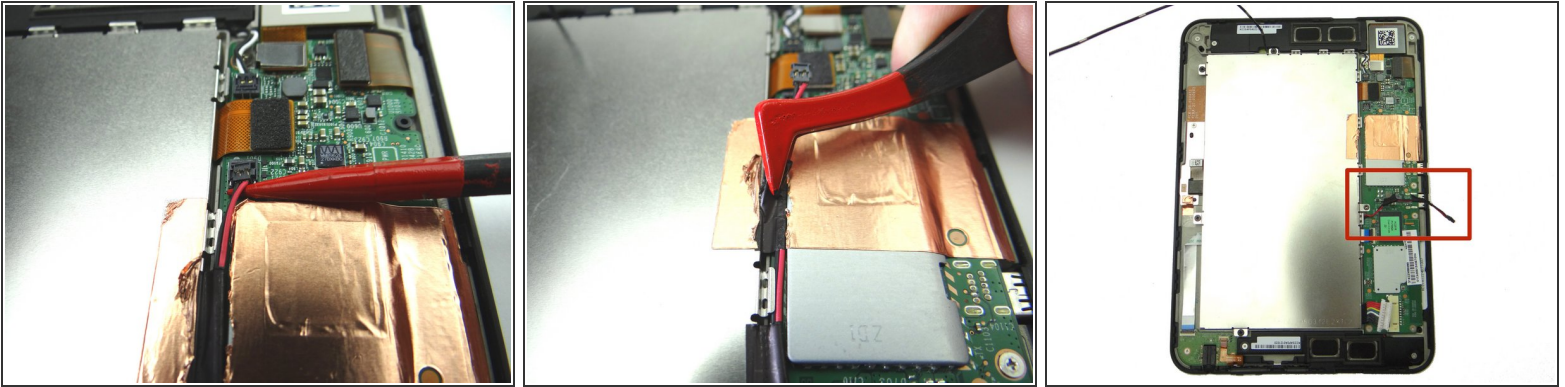
- With the pointed end of the spudger, cut through the copper tape covering cables.
- Use plastic tweezers to remove the Kapton tape covering the top speaker connector.

Step 6



- Pictures 1 & 2: Use blue pry tool to disconnect antenna cable.
- Picture 3: Peel up antenna cable. Move it out of the way of the battery.

Step 7



- Picture 1: Wedge the pointed end of the spudger under lower speaker cable connector and lift straight up.
- Picture 2: Use plastic tweezers to peel up the black electrical tape covering the speaker cable, without removing it, to free the cable.
- Picture 3: Move the speaker cable out of the way of the battery.

Step 8



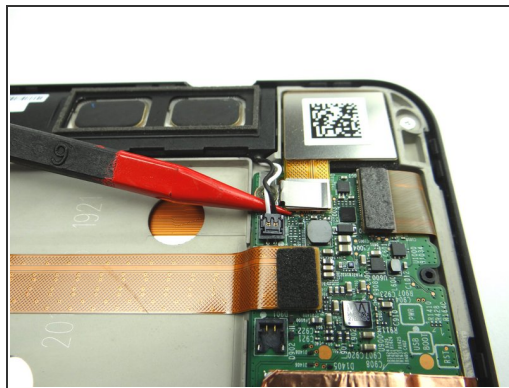
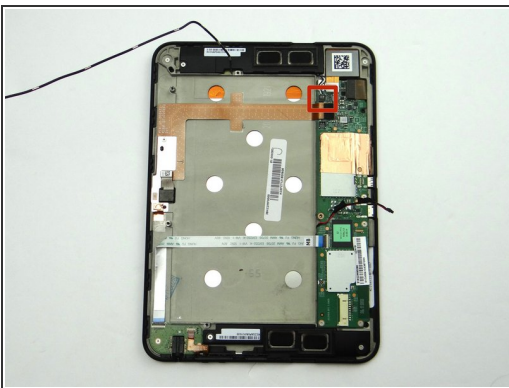
- Pictures 1 & 2: Remove one 3.6 mm T5 Torx screw. Place in SLOT 1.
- Picture 3: Remove four 2.2 mm #00 Phillips screws. Place in SLOT 2.

Step 9



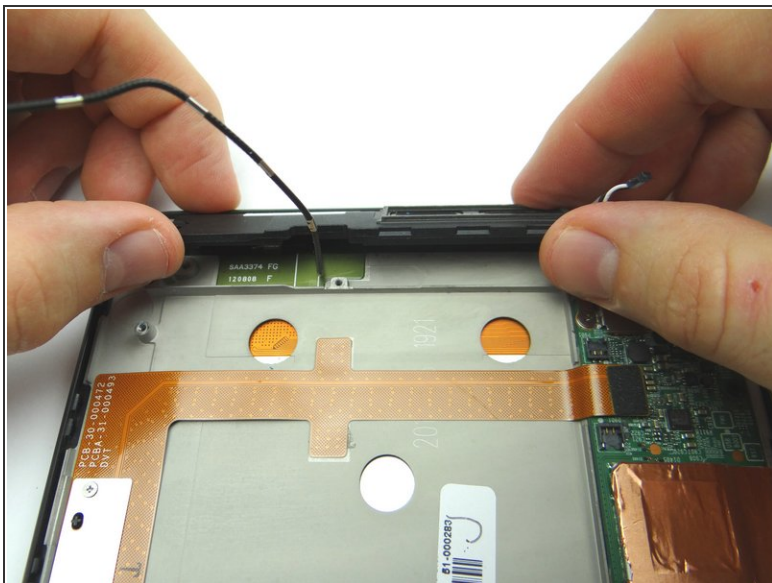
- Lift the battery away from the kindle.
- Place battery in ZONE V.

Step 10 — Removal 3 - Top Speaker



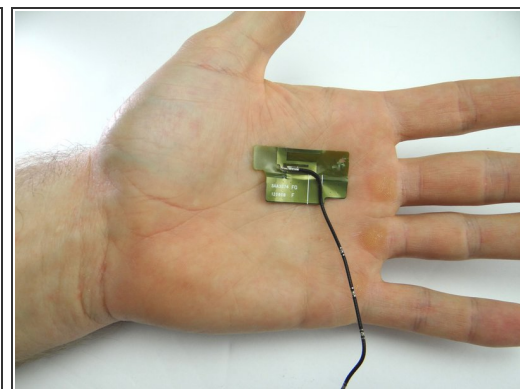
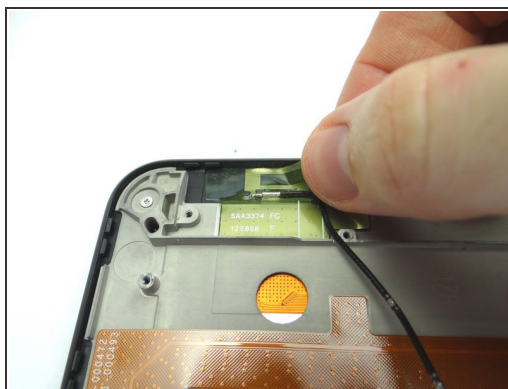
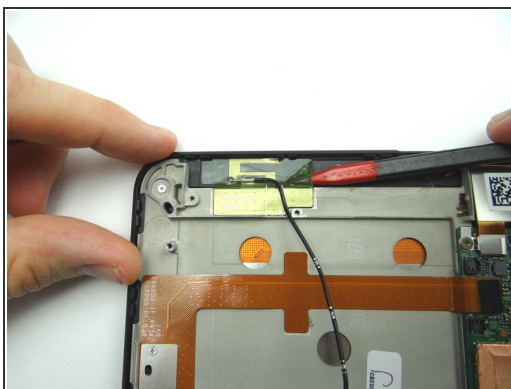
- Pictures 1 & 2: Disconnect top speaker cable.
- Picture 3: Remove one 3.1 mm #00 Phillips screw. Place in SLOT 3.

Step 11



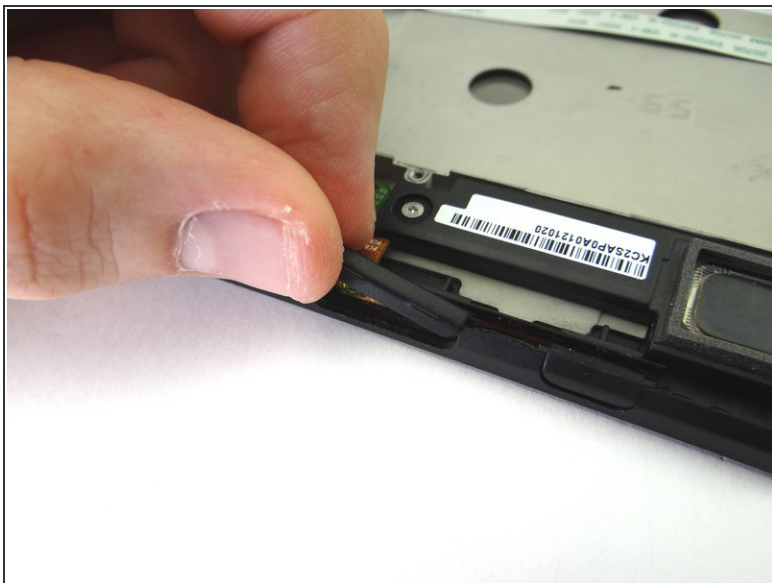
- Remove top speaker and place in ZONE I.

Step 12 — Removal 4.1 - Antenna



- Use pointed end of spudger to peel up corner of antenna gel tape.
- ⓘ The gel tape is durable. The spudger won't damage it so long as you're careful.
- Continue peeling up antenna with your fingers.
- Place in COMPARTMENT C.

Step 13 — Removal 4.2 - Volume Rocker



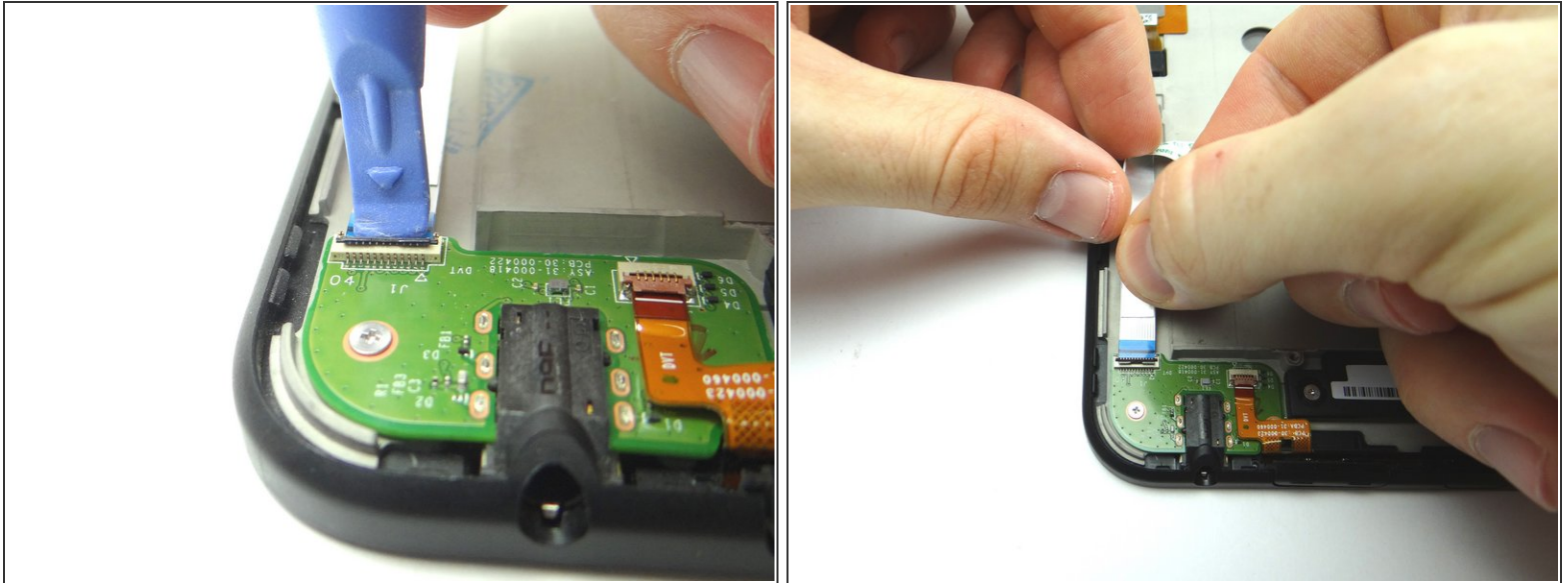
- Gently lift volume rocker. Place in COMPARTMENT A.

Step 14 — Removal 4.3 - Power Button



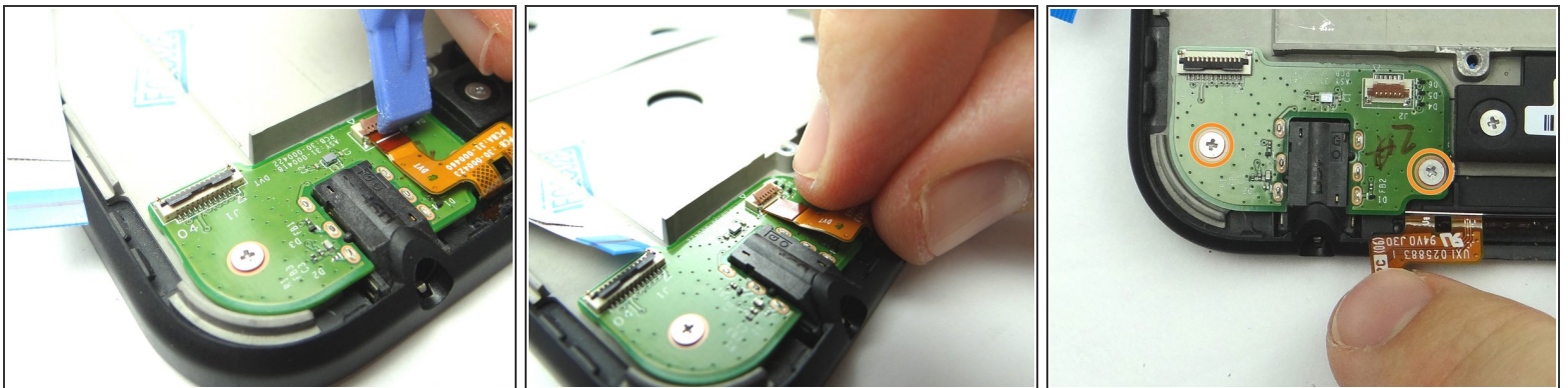
- Gently lift power button. Place in COMPARTMENT B.

Step 15 — Removal 4.4 - Headphone Jack



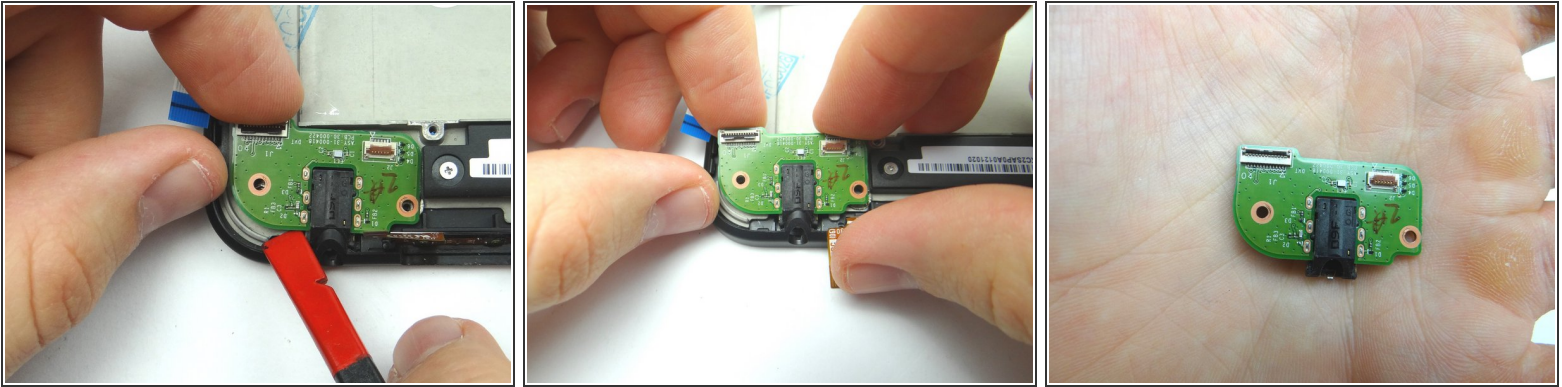
- Picture 1: Use blue pry tool to open ZIF connector.
- Picture 2: Remove headphone jack cable with your fingers.

Step 16



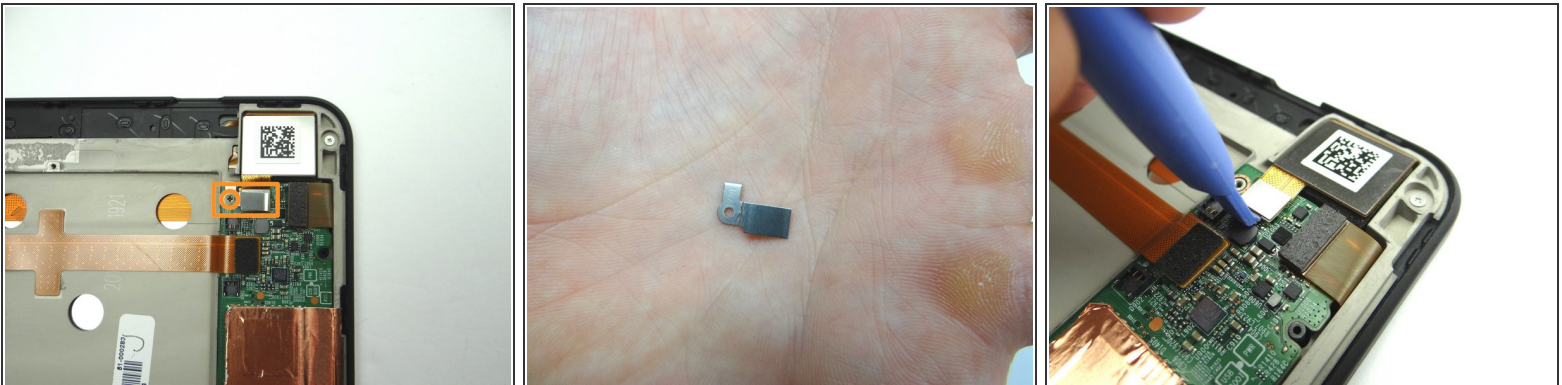
- Picture 1: Open ZIF connector holding volume & power buttons cable.
- Picture 2: Remove cable with your fingers.
- Picture 3: Remove two 3.1 mm #00 Phillips screws. Place in SLOT 4.

Step 17



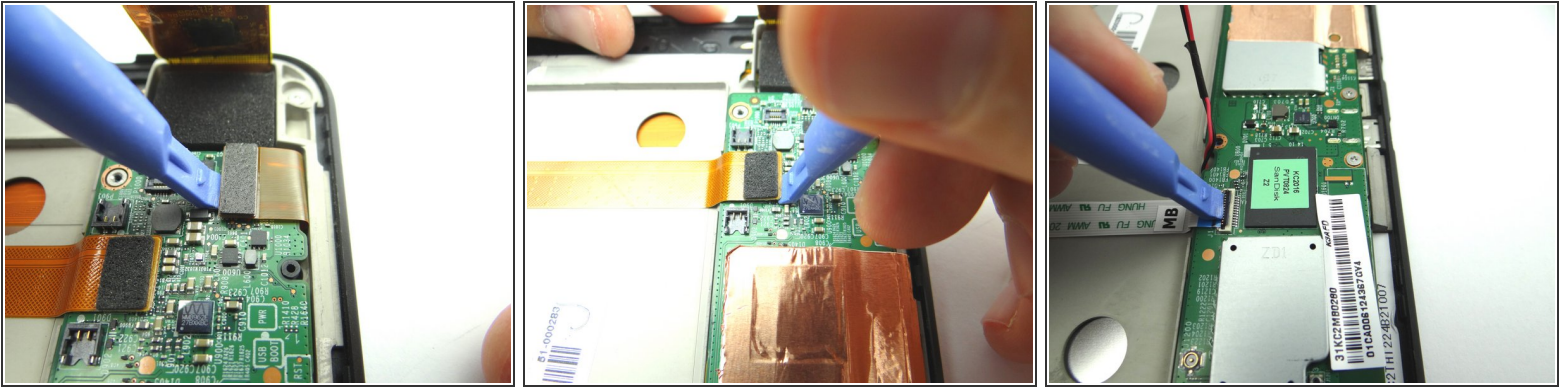
- Use flat end of spudger and your fingers to pry up headphone jack board.
- Remove it and place in COMPARTMENT D.

Step 18 — Removal 5 - Logic Board



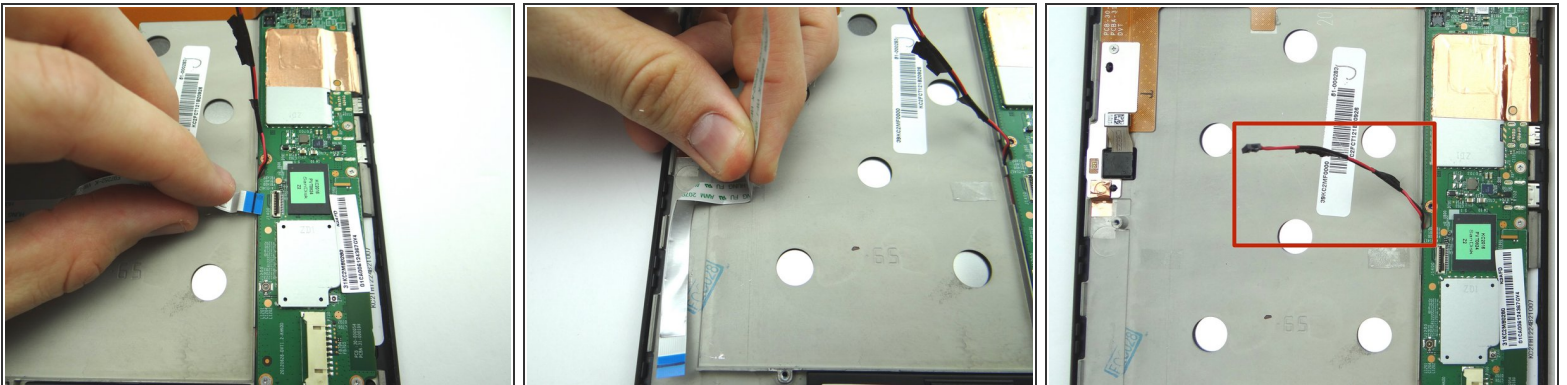
- Pictures 1 & 2: Remove 1.8 mm #00 Phillips screw. Place in SLOT 5. Place the bracket held down by the screw in SLOT 5 too.
- Picture 3: Disconnect digitizer cable.

Step 19



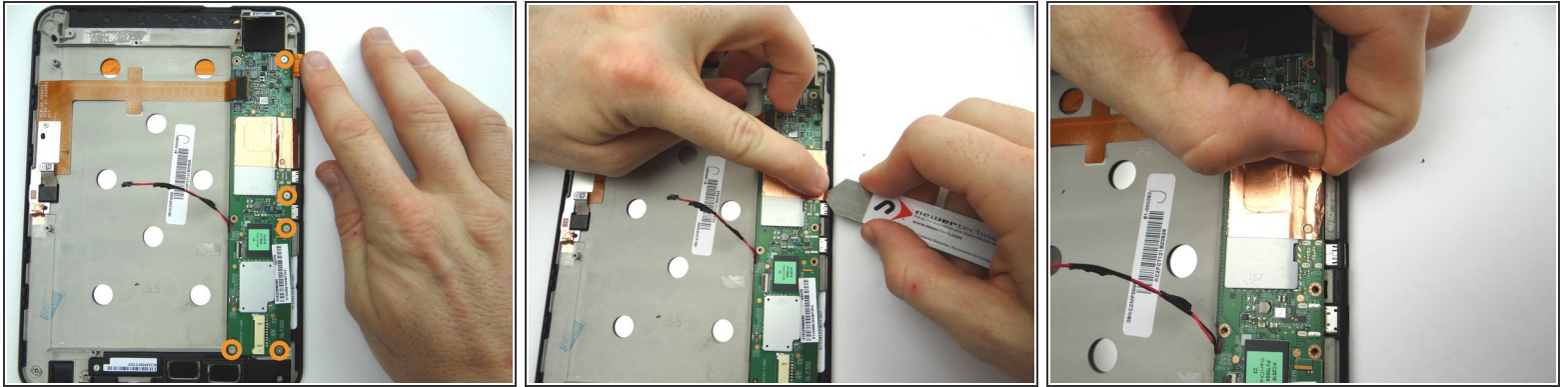
- Picture 1: Disconnect LCD cable.
- Picture 2: Disconnect camera connection cable.
- Picture 3: Open ZIF connector for headphone jack connection cable.

Step 20



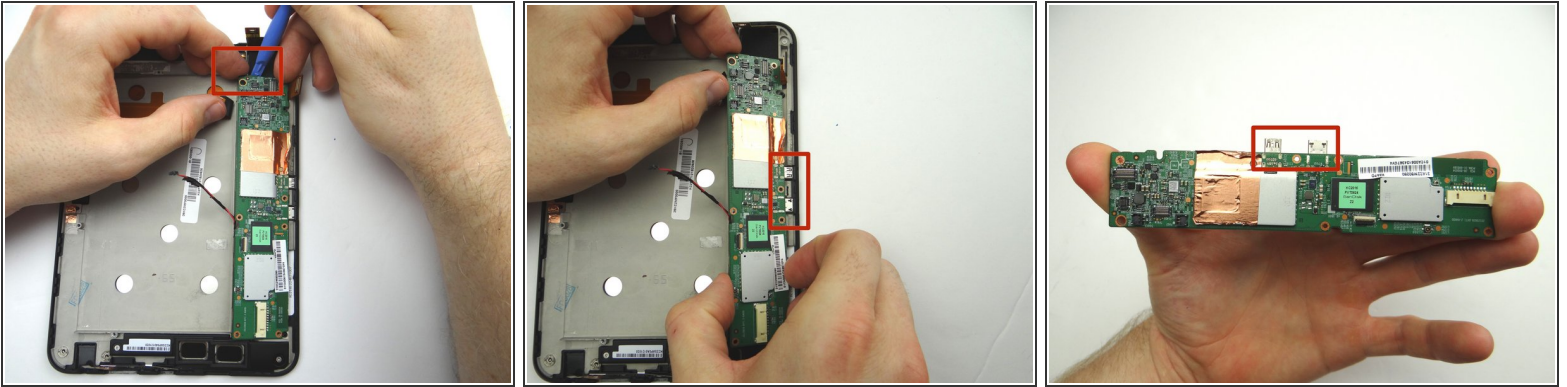
- Picture 1: Remove headphone jack connection cable from open ZIF connector.
- Picture 2: Peel up cable and place in ZONE V.
- Picture 3: Make sure the speaker cable is out of the way of the logic board.

Step 21



- Picture 1: Remove five 3.2 mm #00 Phillips screws holding down logic board. (Note the hidden screw in the upper-right hand corner). Place in SLOT 6.
- Picture 2: Peel up the corner of the copper tape with the iSesamo in one hand, while protecting the logic board from contact with the iSesamo tool with your pointer finger on the opposite hand.
- Picture 3: Continue peeling the tape up from the mid-plate with your fingers.

Step 22



i There should be minimal tension while removing the logic board:

- Picture 1: Lift the top of the logic board with the blue pry tool just enough to wedge your pointer finger underneath.

! Picture 2: Grab the logic board with your fingers and carefully guide the charging port and HDMI port (red square) out of their sockets. Finish removing the logic board.

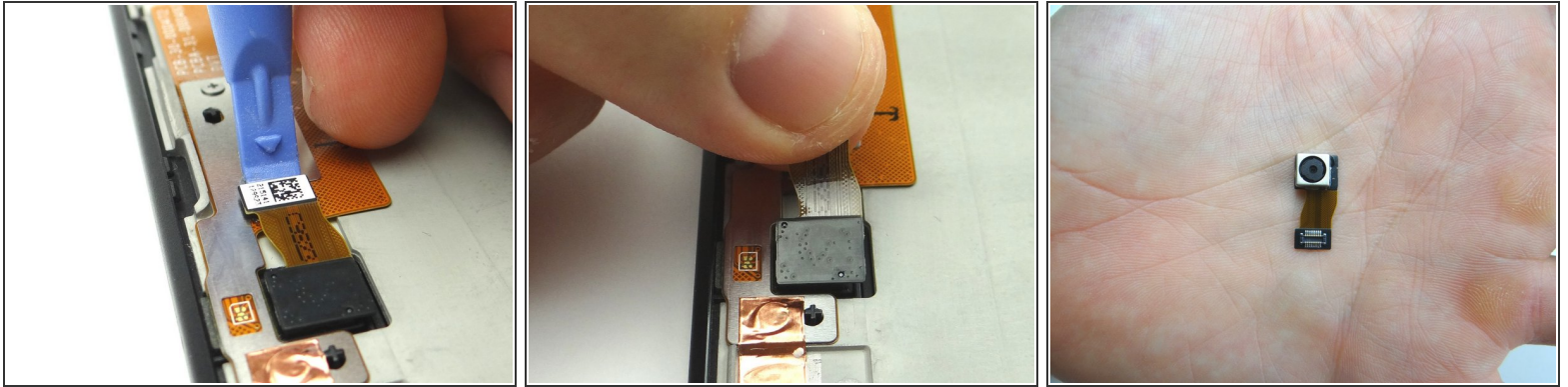
- Picture 3: Shows the charging port and HDMI port (red square). Place logic board in ZONE V with battery and battery cover.

Step 23 — Removal 6 - Lower Speaker



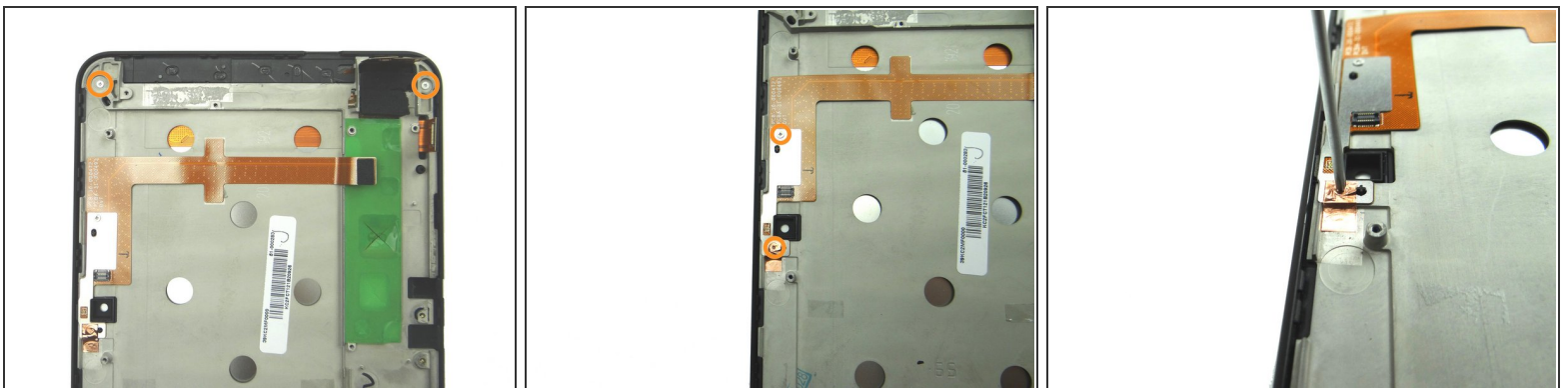
- Remove two 3.1 mm #00 Phillips screw. Place in SLOT 7.
- Peel up speaker cable.
- Remove lower speaker and place in ZONE II.

Step 24 — Removal X - Camera (front-facing only)



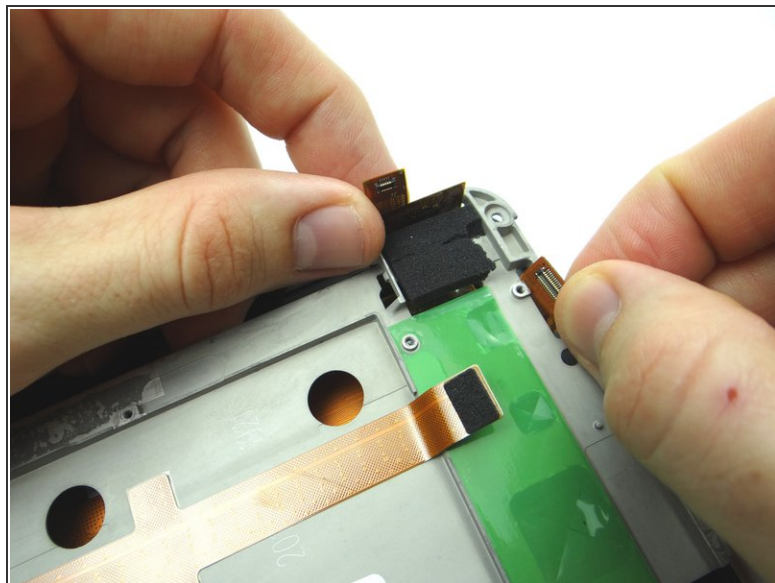
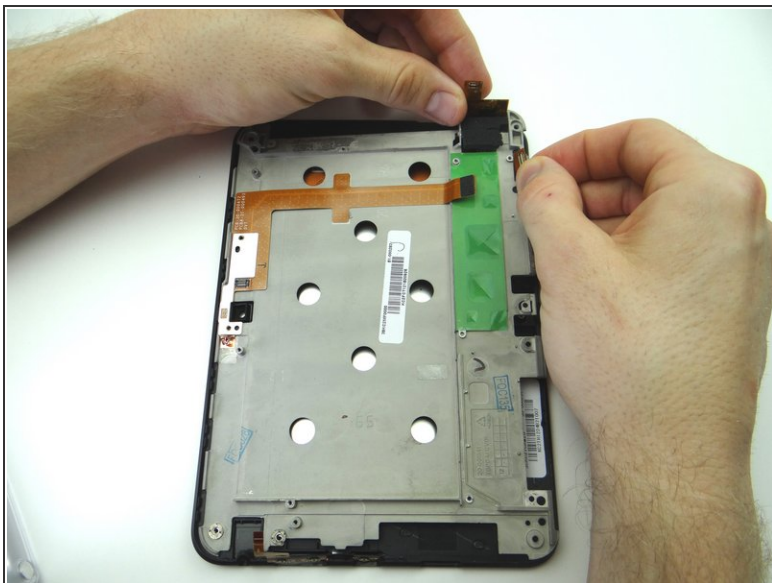
- Use blue pry tool to disconnect the camera.
- Remove it and place it in COMPARTMENT D.

Step 25 — Removal 7 - Mid-Plate



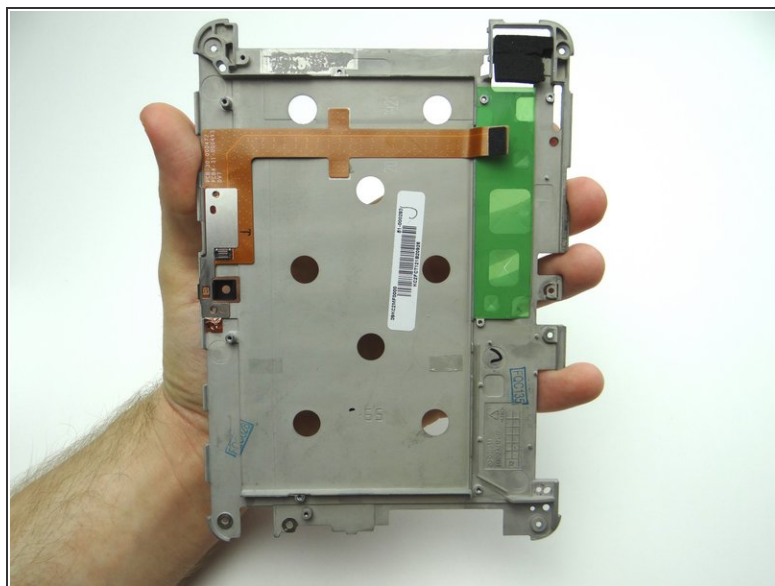
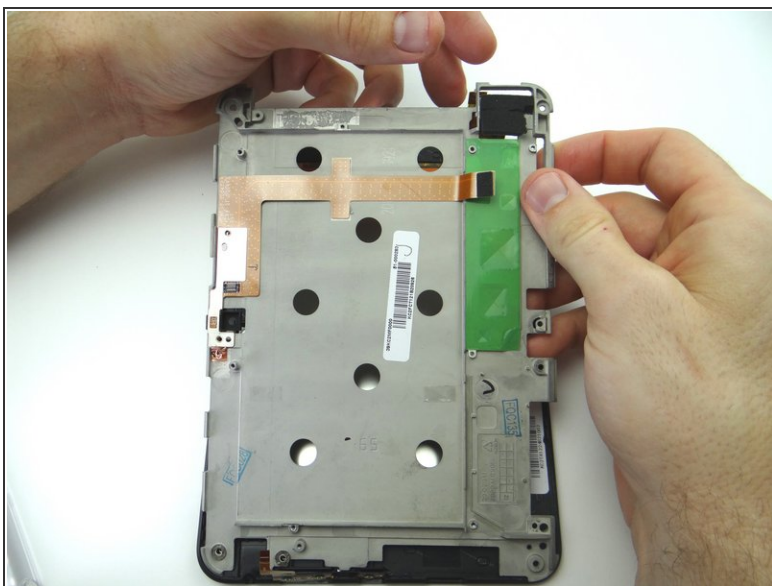
- Picture 1: Remove two 3.1 mm #00 Phillips screws and place in SLOT 8.
- Pictures 2 & 3: Remove two 3.2 mm #00 Phillips screws and place in SLOT 9. The bottom screw is covered by copper tape - simply push the screwdriver through the tape.

Step 26



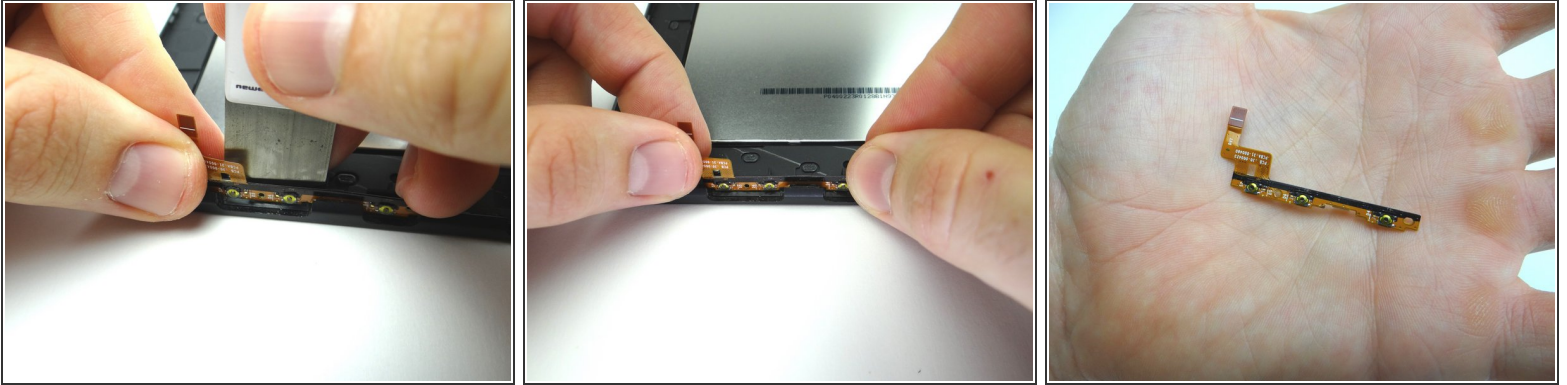
- Lift the upper-right corner of the mid-plate, carefully guiding the LCD and digitizer cables through.

Step 27



- Continue lifting the mid-plate away from the display assembly.
- Carefully set the components in ZONE V aside. Place the mid-plate in ZONE V, then put the other components on top.

Step 28 — Removal 8 - Volume & Power Button Cable



- Use the iSesamo to carefully separate the volume & power cable from the display.
- Finish removing the cable with your fingers.
- Place cable in COMPARTMENT E.

Step 29 — Removal 9 - Display Assembly



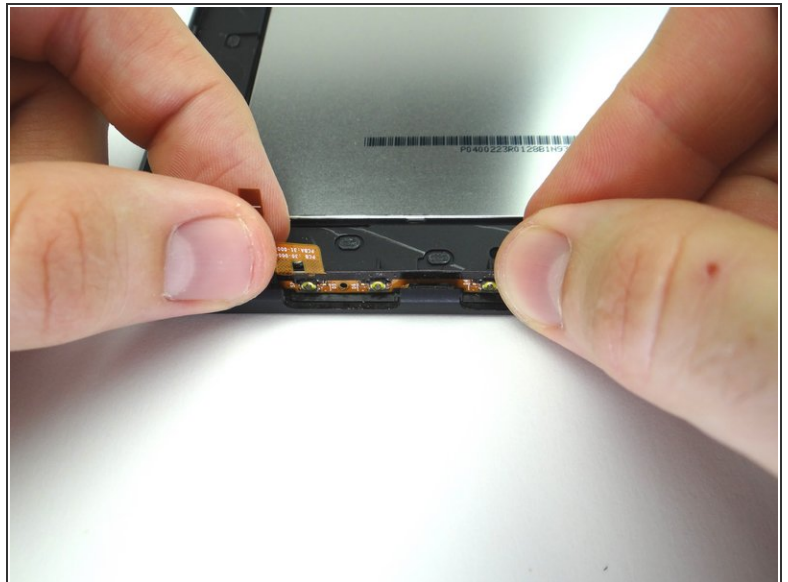
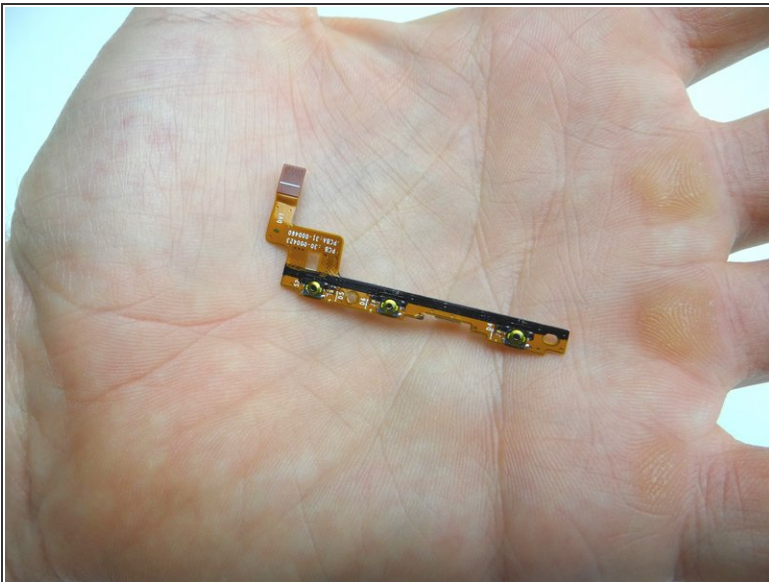
- The display assembly remains.

Step 30 — Replacement 9 - Display Assembly



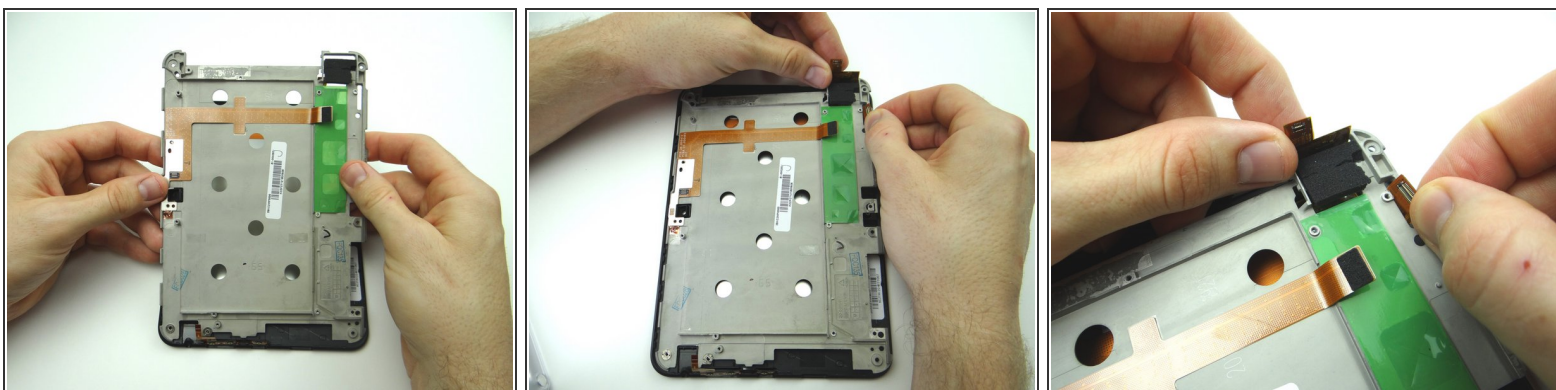
- Retrieve the replacement display.

Step 31 — Replacement 8 - Volume & Power Button Cable



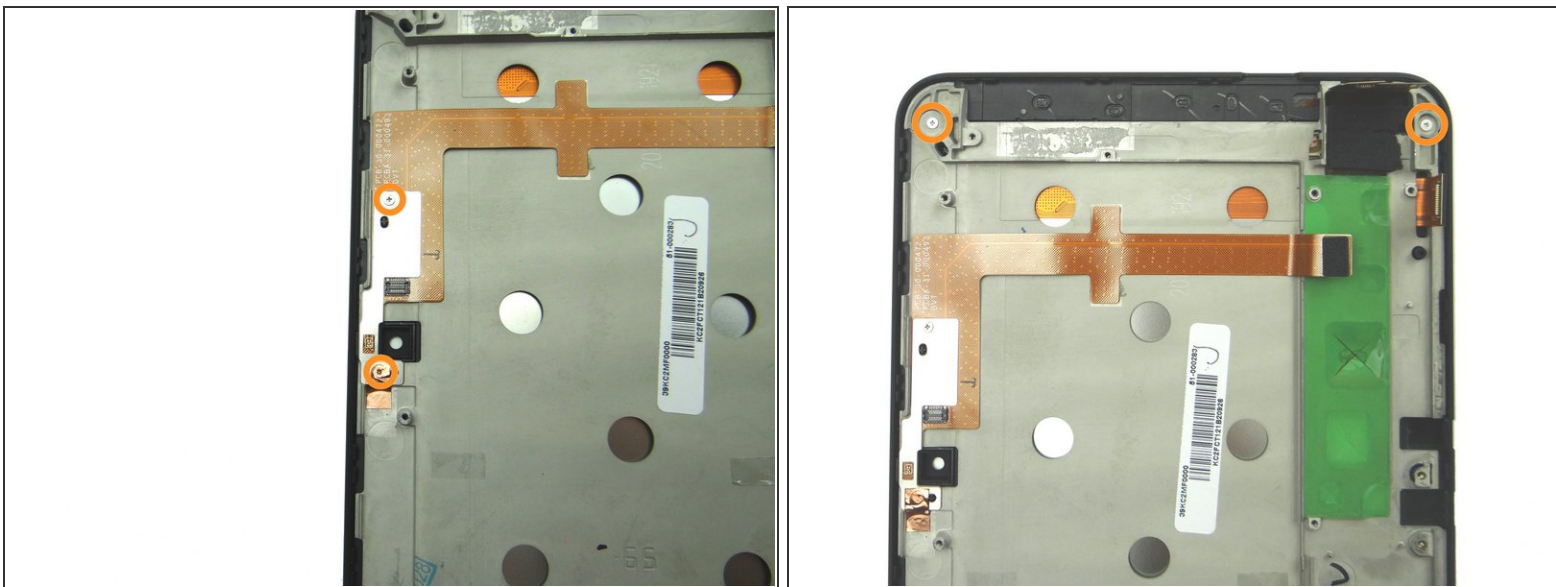
- Seat the volume & power cable from COMPARTMENT E. Adhere it to the inside wall of the display.

Step 32 — Replacement 7 - Mid-Plate



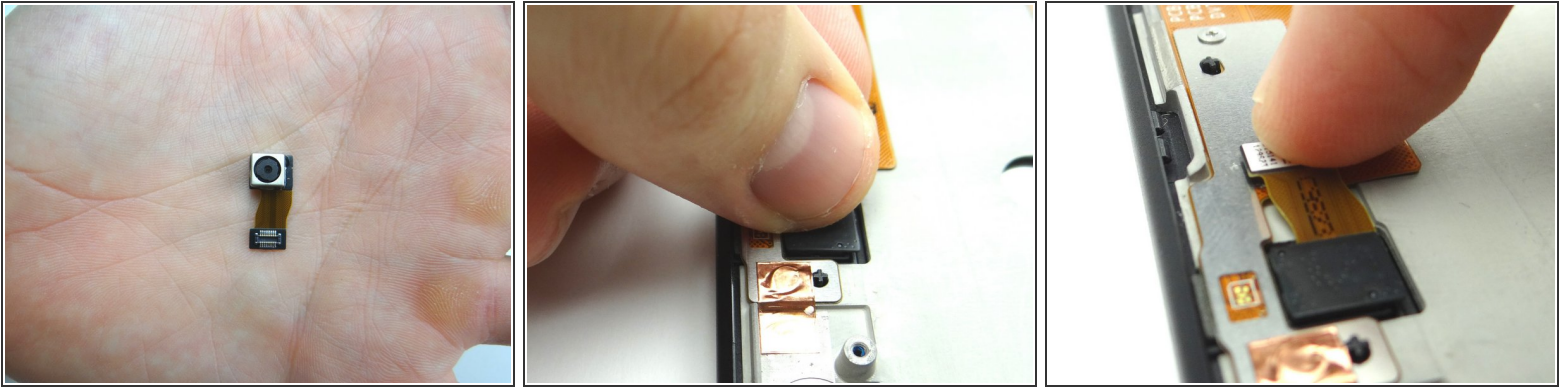
- Seat mid-plate on display assembly:
- Carefully guide the LCD and digitizer cables through their openings in the upper-right corner.

Step 33



- Picture 1: From SLOT 9, replace two 3.2 mm #00 Phillips screws.
- Picture 2: Replace two 3.1 mm #00 Phillips screw and place from SLOT 8.

Step 34 — Replacement X - Camera (front-facing only)



- From COMPARTMENT D, replace camera:
- Seat and connect it.

Step 35 — Replacement 6 - Lower Speaker



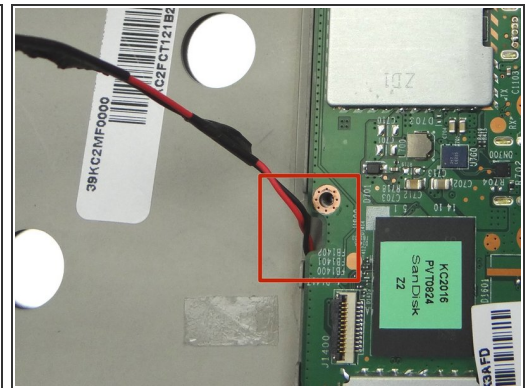
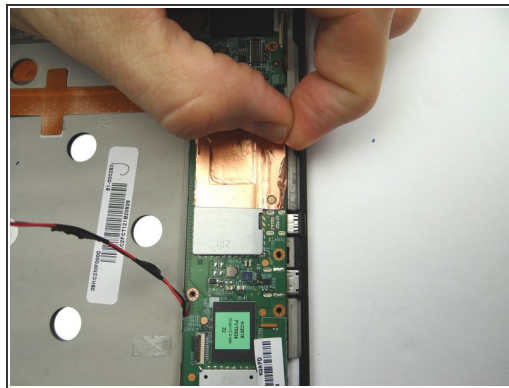
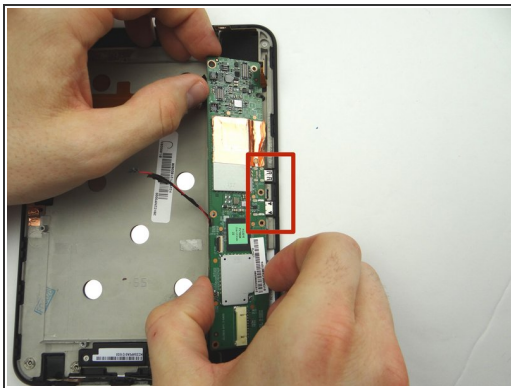
- Picture 1: Seat the lower speaker from ZONE II.
- Pictures 2 & 3: Run the speaker cable along the outside wall of the battery chamber on the mid-frame.

Step 36



- Replace two 3.1 mm #00 Phillips screws from SLOT 7.

Step 37 — Replacement 5 - Logic Board



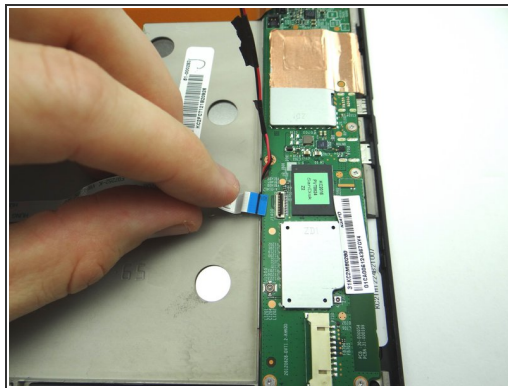
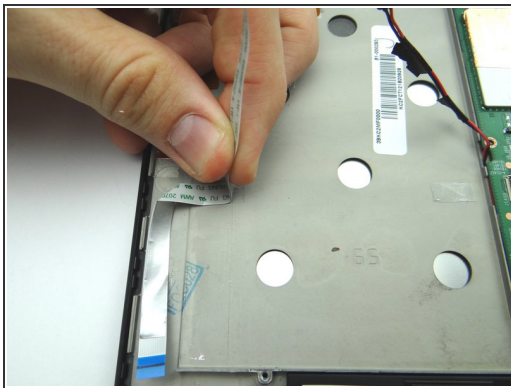
- Picture 1: From ZONE V, guide the HDMI and charging port (red square) in first then continue to seat logic board.
- Picture 2: Adhere the edge of the copper tape to the mid-plate.
- Picture 3: Make sure the lower speaker cable is feed through the opening in the logic board as pictured.

Step 38



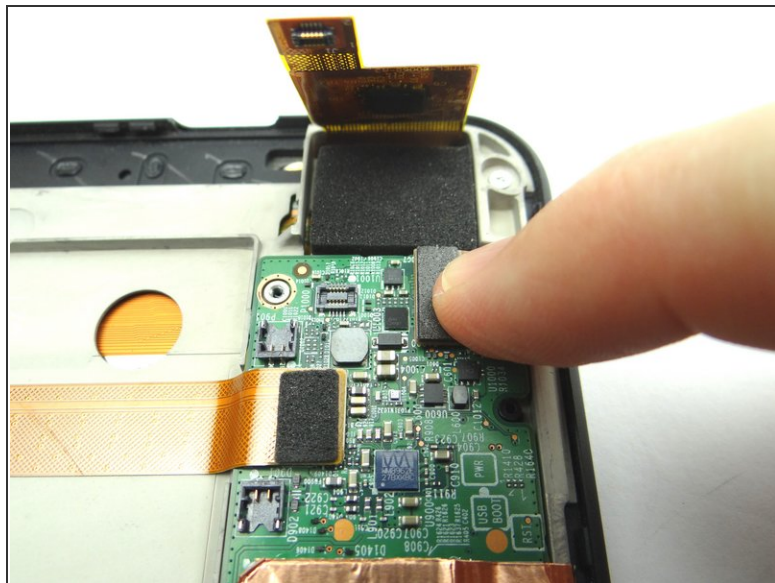
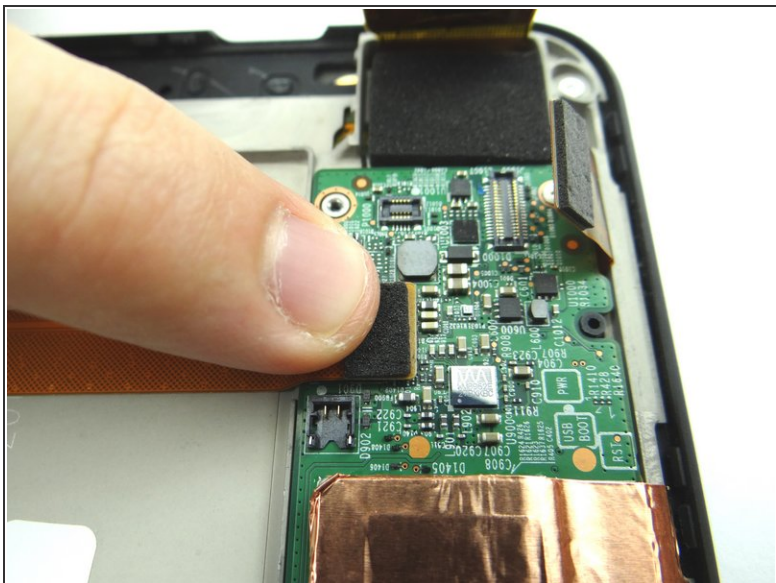
- Replace five 3.2 mm #00 Phillips screws holding down logic board from SLOT 6.

Step 39



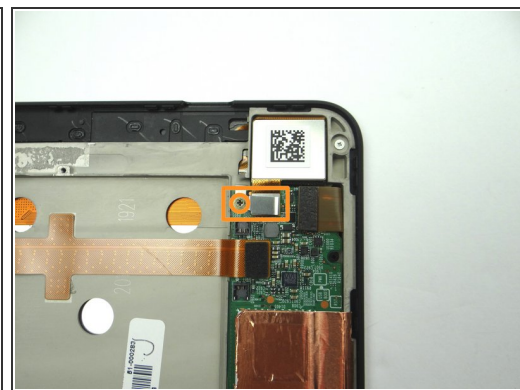
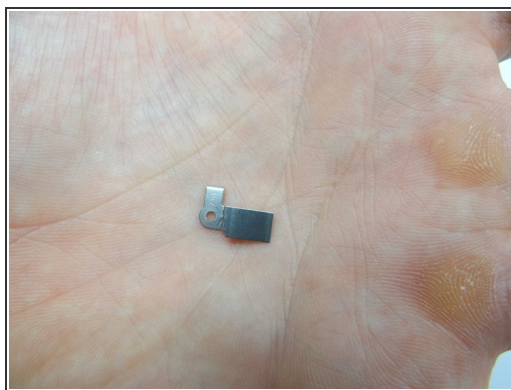
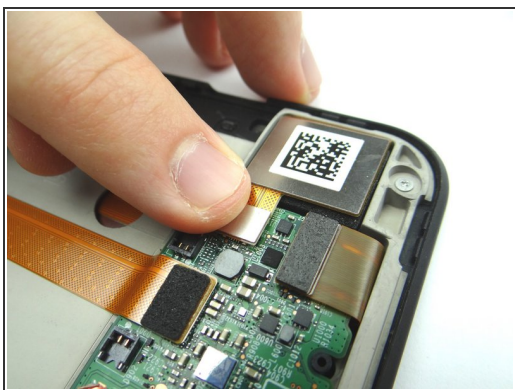
- Picture 1: From ZONE V, seat headphone jack connection cable.
- Picture 2: Connect to ZIF connector on logic board.
- Picture 3: Close ZIF connector.

Step 40



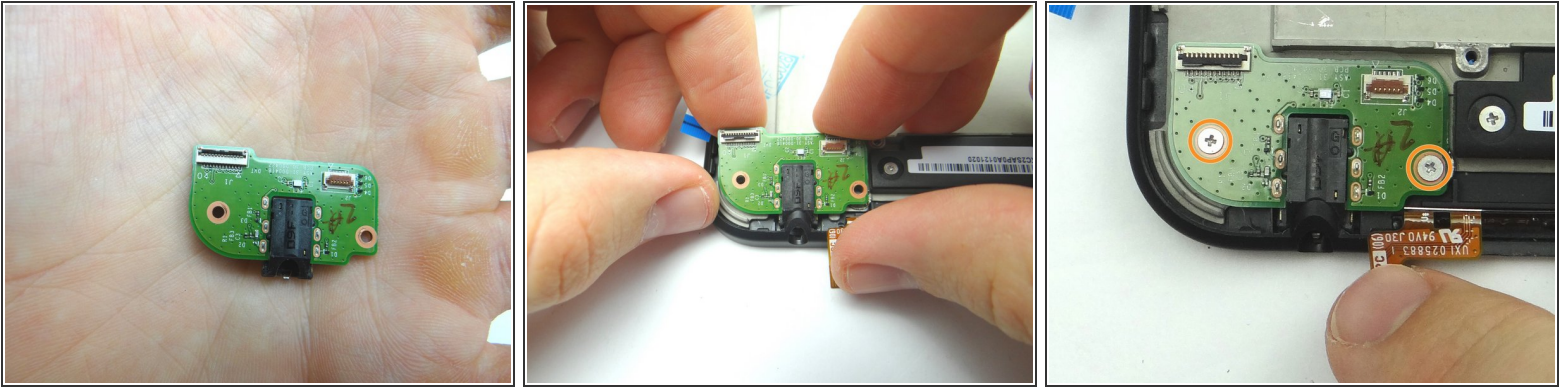
- Connect camera connection cable.
- Connect LCD cable.

Step 41



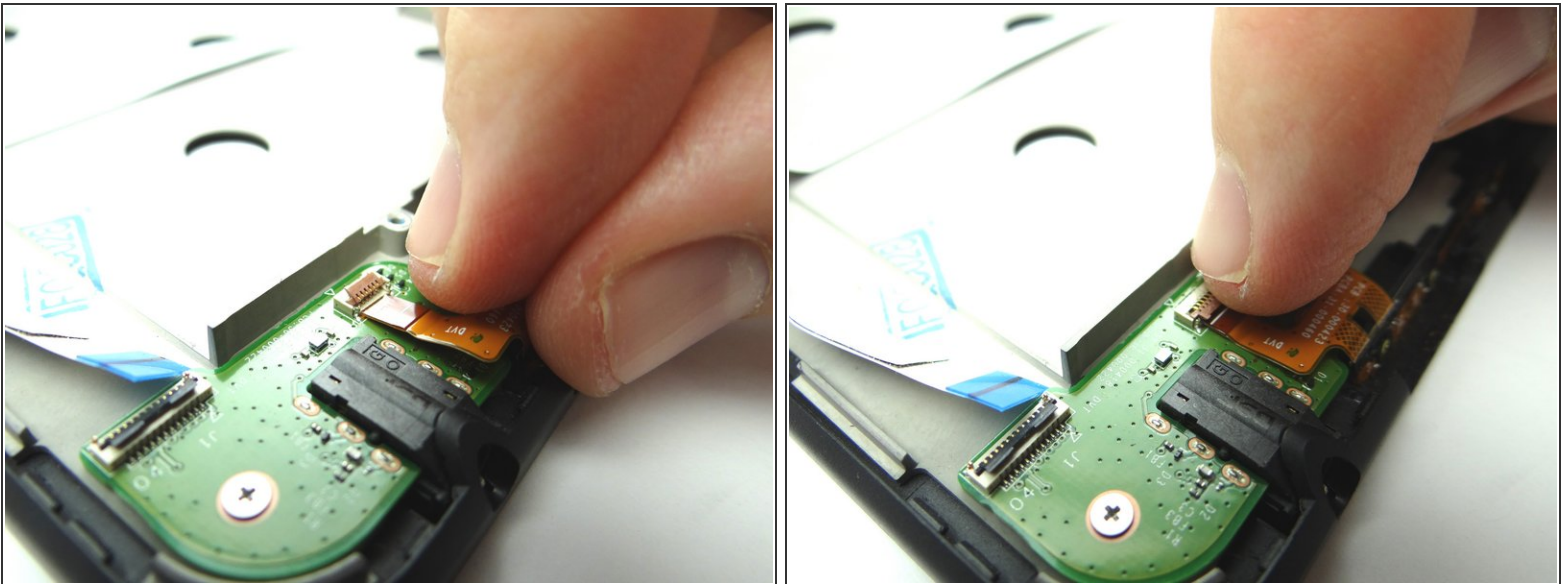
- Picture 1: Connect digitizer cable.
- Pictures 2 & 3: Seat the bracket from SLOT 5. Replace 1.8 mm #00 Phillips screw from SLOT 5 to hold down bracket.

Step 42 — Replacement 4.4 - Headphone Jack



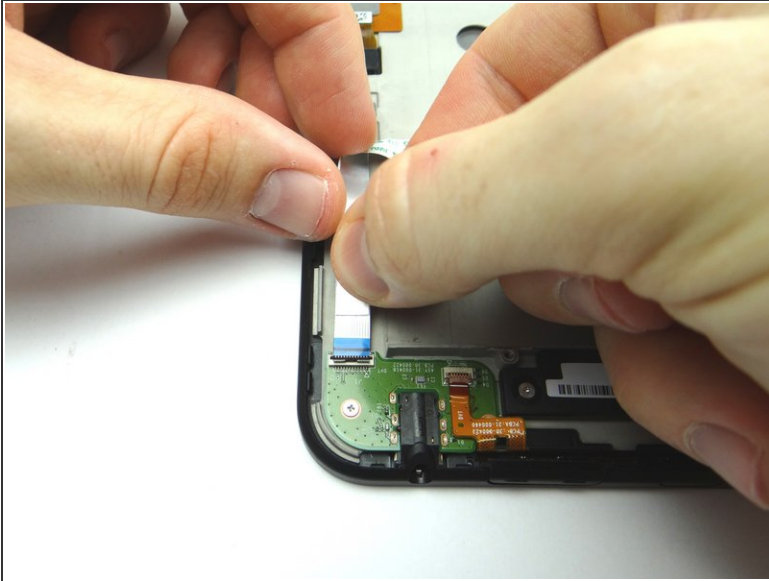
- From COMPARTMENT D, replace headphone jack board.
- Replace two 3.1 mm #00 Phillips screws from SLOT 4.

Step 43



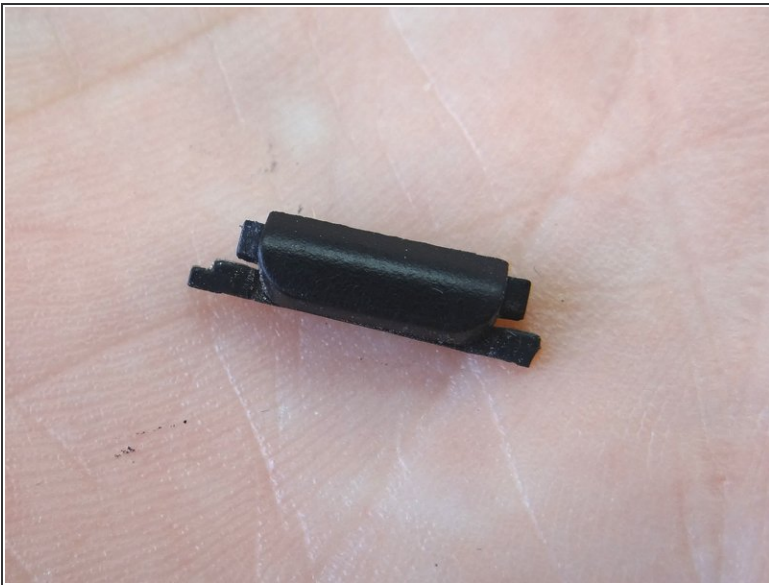
- Push power and volume buttons cable head into open ZIF connector.
- Close ZIF connector

Step 44



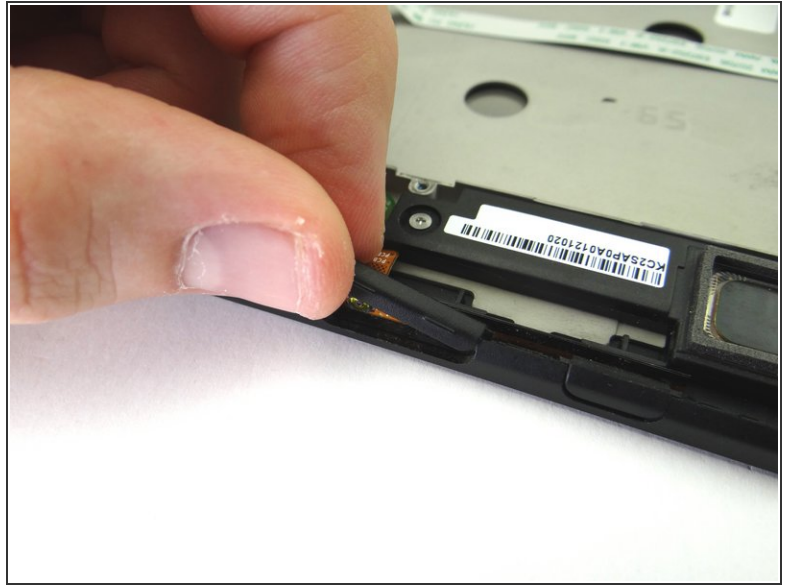
- Push headphone jack connection cable into open ZIF connector.
- Close ZIF connector.

Step 45 — Replacement 4.3 - Power Button



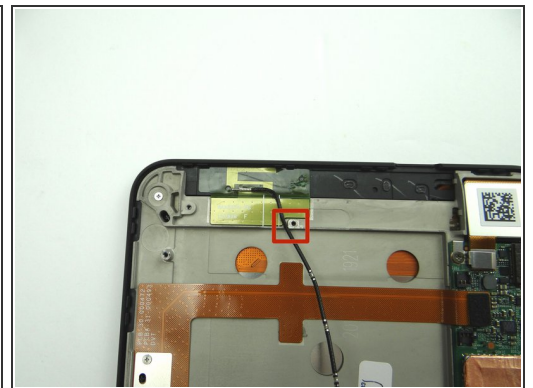
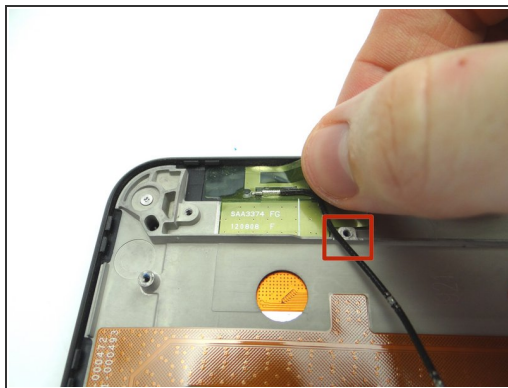
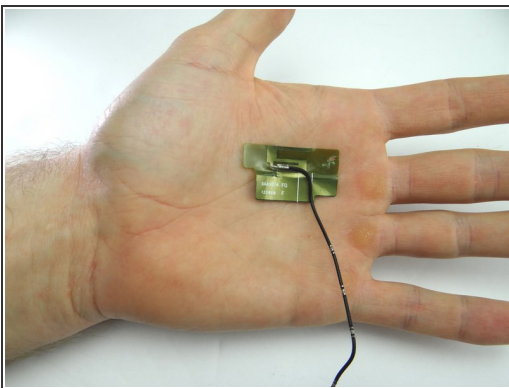
- Maintain orientation from Picture 1:
- From COMPARTMENT B, replace power button.

Step 46 — Replacement 4.2 - Volume Rocker



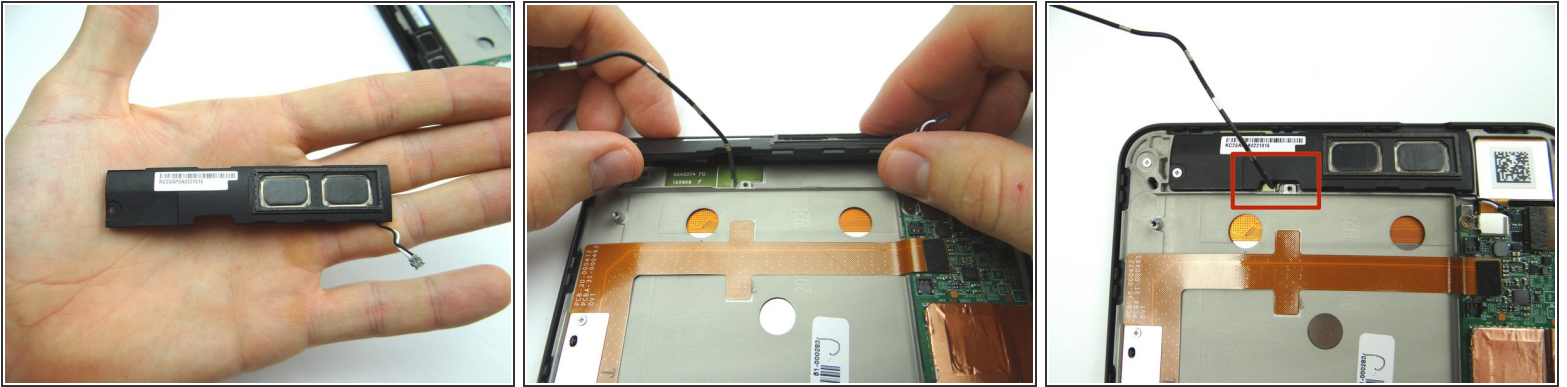
- Maintain orientation from Picture 1:
- From COMPARTMENT A, replace volume rocker.

Step 47 — Replacement 4.1 - Antenna



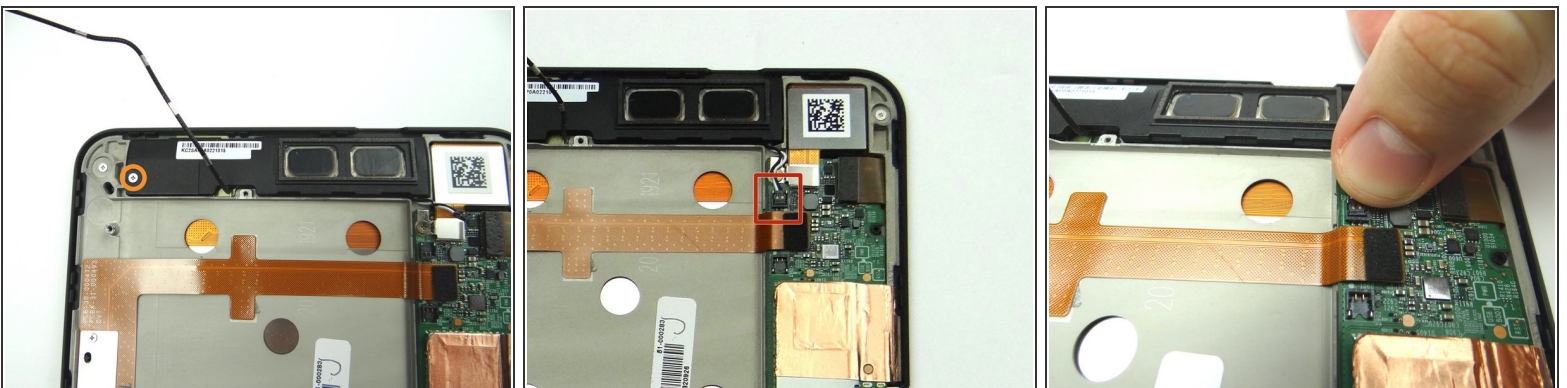
- From COMPARTMENT C, replace antenna.
- Lay the cable next to the screw socket as pictured.

Step 48 — Replacement 3 - Top Speaker



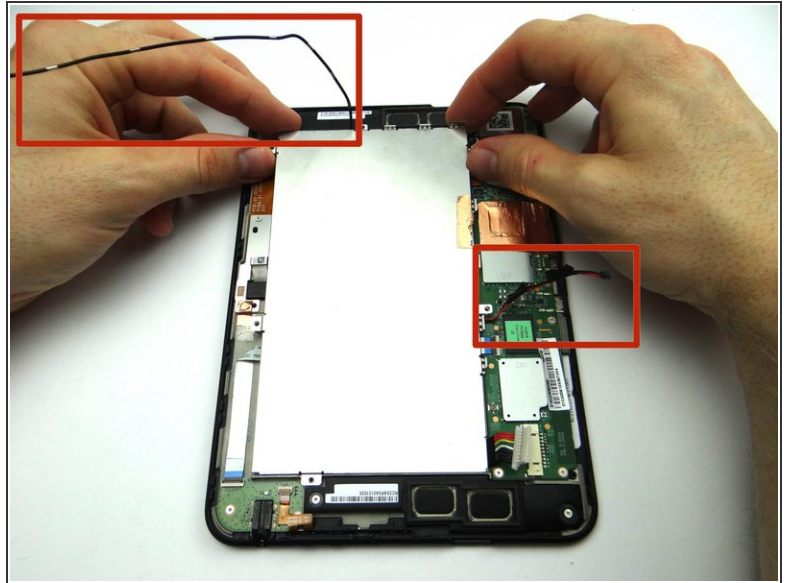
- Seat top speaker from ZONE I.
- Stand the antenna cable up as shown in Picture 3 so it's out of the way when you seat the battery.

Step 49



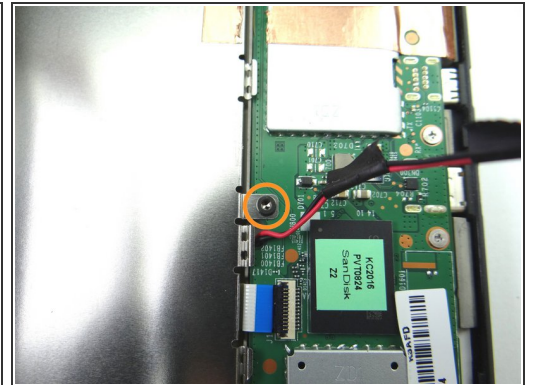
- Picture 1: Replace one 3.1 mm #00 Phillips screw from SLOT 3.
- Pictures 2 & 3: Reconnect speaker cable.

Step 50 — Replacement 2.2 - Replace Battery



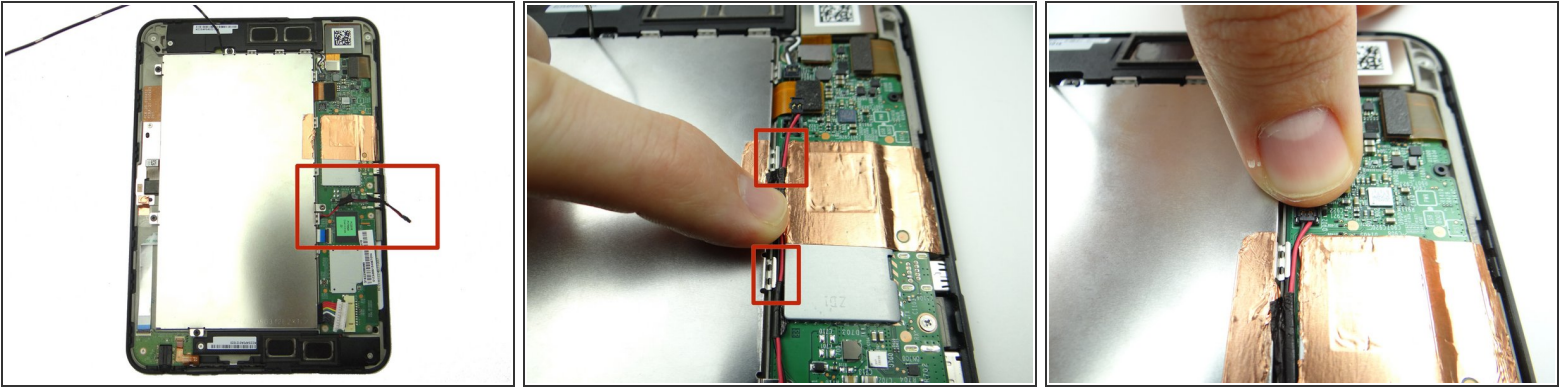
- Replace battery from ZONE V. Make sure the antenna cable & lower speaker cable don't get trapped underneath.

Step 51



- Picture 1: Replace four 2.2 mm #00 Phillips screws from SLOT 2.
- Pictures 2 & 3: Replace one 3.6 mm T5 Torx screw from SLOT 1.

Step 52

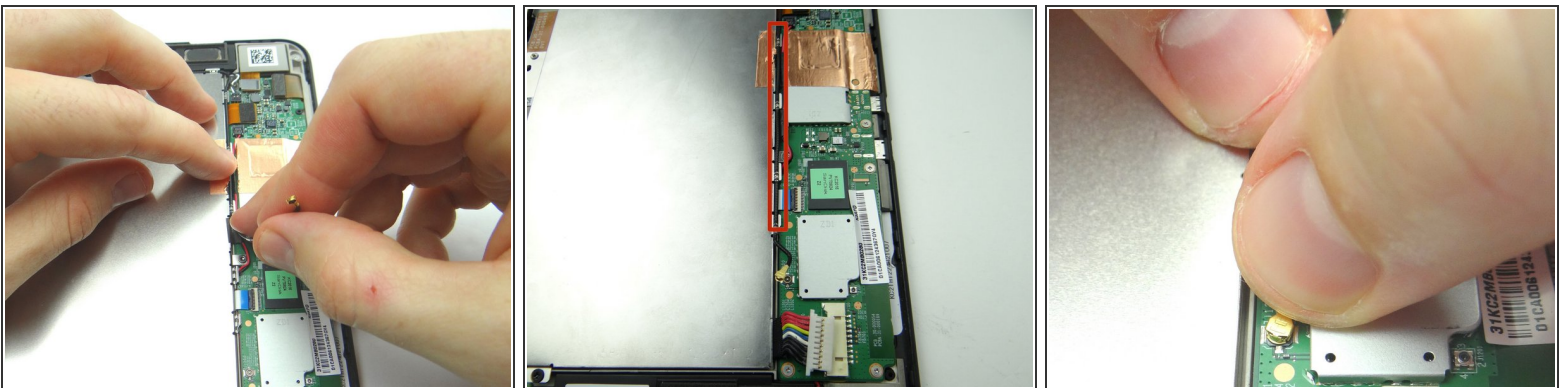


- Picture 1: Shows the speaker cable.
- Picture 2: Seat the cable speaker next to the notches (red squares) on the outside edge of the battery frame.

⚠ Don't tuck the cable under the notches.

- Picture 3: Seat speaker cable connector.

Step 53



- Pictures 1 & 2: Seat antenna cable in the battery frame notches.
- Picture 3: Connect antenna cable.

Step 54 — Replacement 2.1 - Connect Battery



- Picture 1: Push both sides of battery connector evenly into the socket.
- Picture 2: The connector should look like this (cannot see gold contacts) if seated properly.

Step 55 — Replacement 1 - Battery Cover



- Push battery cover back onto Kindle.

Step 56



- Pictures 1 & 2: Check around the edges for gaps between the battery cover and front panel.
- Picture 3: Power up and test device.