

Manual 08 - Display Assembly

[illegible]

Step 1 — Removal 1 - Battery Cover



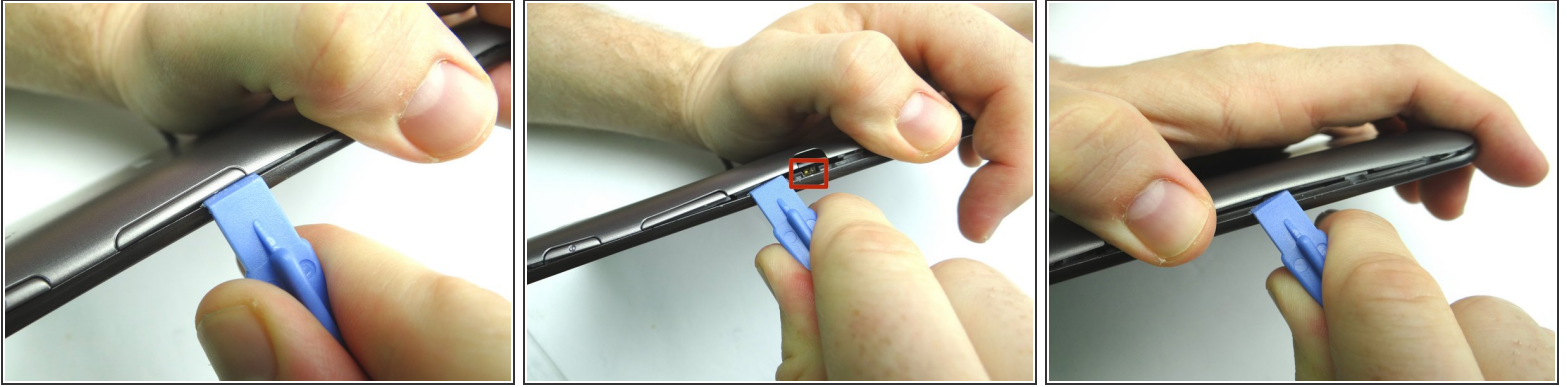
- Power down device.
- Remove SD card. Place in COMPARTMENT A.
- In the next few steps, you'll be removing the battery cover by freeing the clips marked in Picture 3.

Step 2



- Insert the blue pry tool face down, above the left edge of the charging port, between the battery cover and front panel.
- Sweep carefully to the right.

Step 3

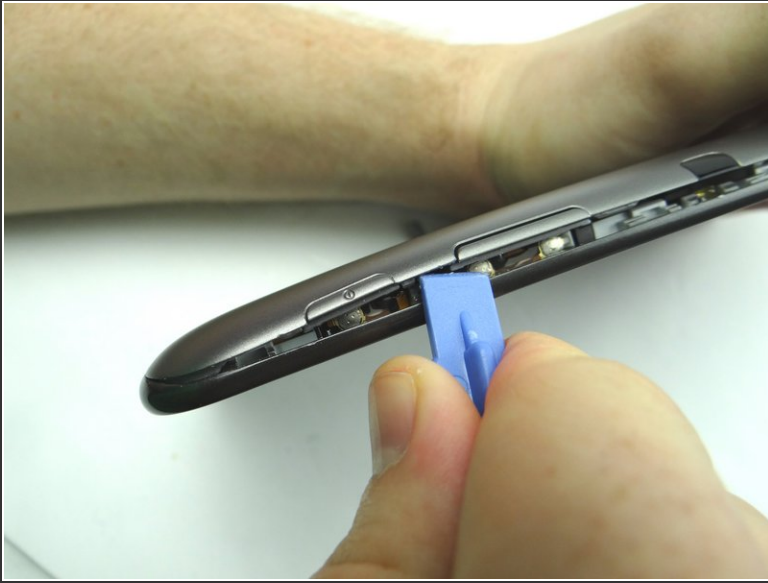


- Picture 1: Insert wide blue pry tool below the bottom half of the volume rocker.
- Picture 2: Sweep between the volume rocker and infrared sensor cover. Twist counter-clockwise to pop up. Grab the battery cover with your thumb to hold it open.

⚠ Don't sweep past the infrared sensor (red square in Picture 2).

- Picture 3: Reinsert the wide blue pry tool half an inch past the infrared sensor and continue working your way down towards the corner. Continue peeling up with your thumb in the opposite hand.

Step 4



- Picture 1: Insert between the volume rocker and power button. Gently twist to pry up.
- Picture 2: Insert near the corner as shown and gently twist to pry up.

Step 5



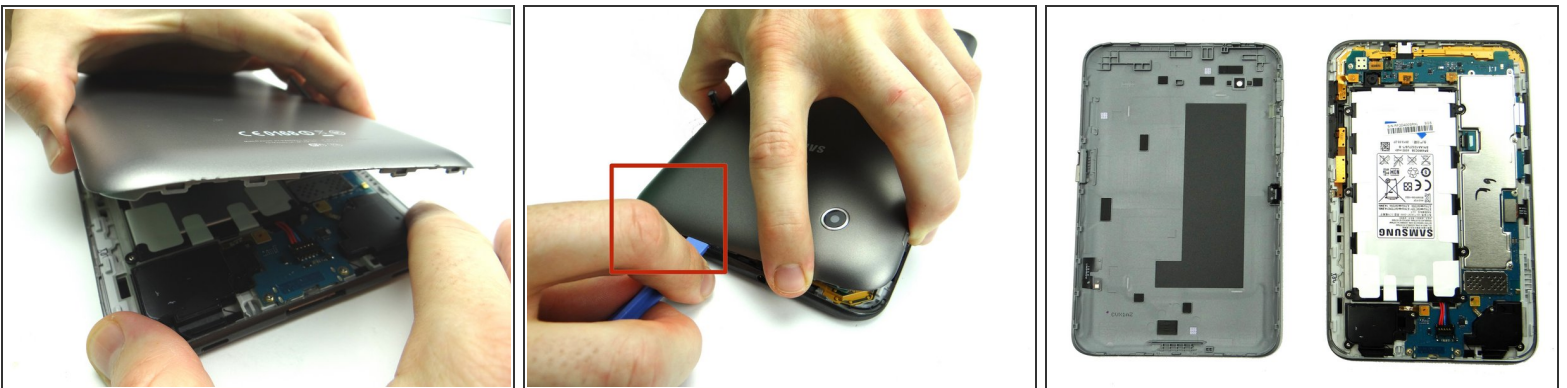
- Picture 1: Insert near the corner as shown and gently twist to pry up.
- Picture 2: Sweep along the bottom with the blue pry tool while peeling up with your fingers.

Step 6



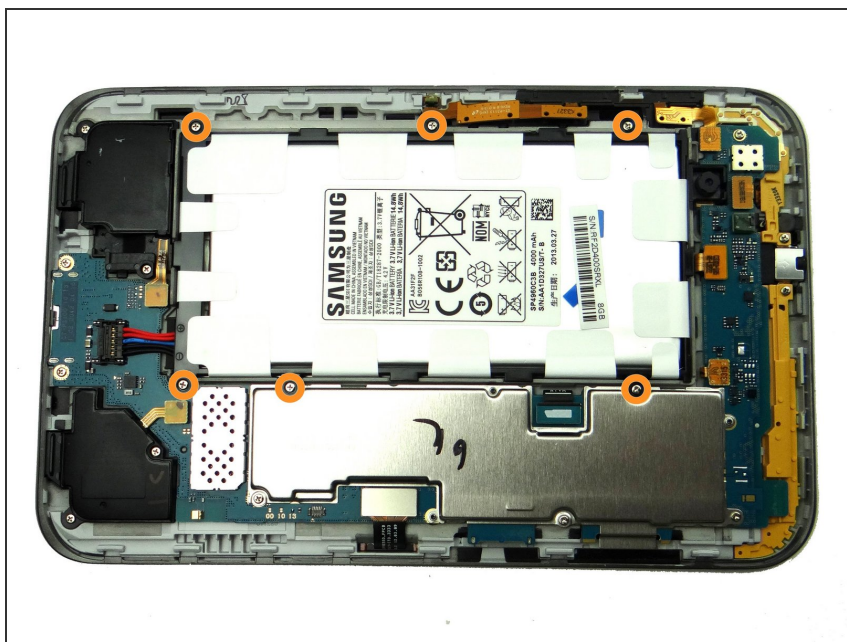
- Picture 1: Pull up the battery cover until you feel tension near the SD card slot and/or volume rocker:
- Picture 2: Sweep blue pry tool under SD slot to free the clips.
- Picture 3: Guide the volume rocker and power buttons up with your fingers.

Step 7



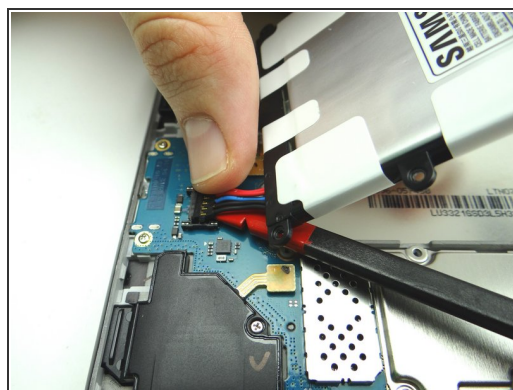
- Picture 1: The cover may get stuck in the upper-right corner.
- Picture 2: Bring the cover back down until it's nearly flat. Work your way around the corner with the blue pry tool to finish separating the battery cover from the front panel.
- Picture 3: Place battery cover in ZONE V.

Step 8 — Removal 2.0 - Battery



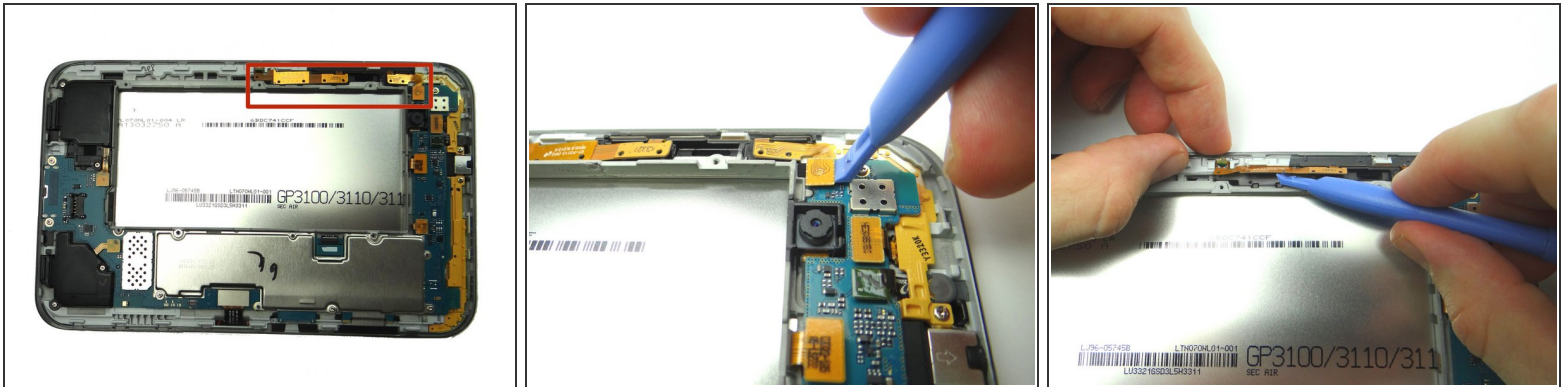
- Remove six 3.4 mm Phillips #00 screws holding down the battery. Place in SLOT 1.

Step 9



- Picture 1: Lift the battery. Hold it at a 45° angle.
- Pictures 1 & 2: Use the flat end of the spudger to wedge under the battery connector. With your thumb on top, lift straight up to disconnect the battery.
- Place battery in ZONE V.

Step 10 — Removal 2.1 - Power / Volume Buttons / Infrared



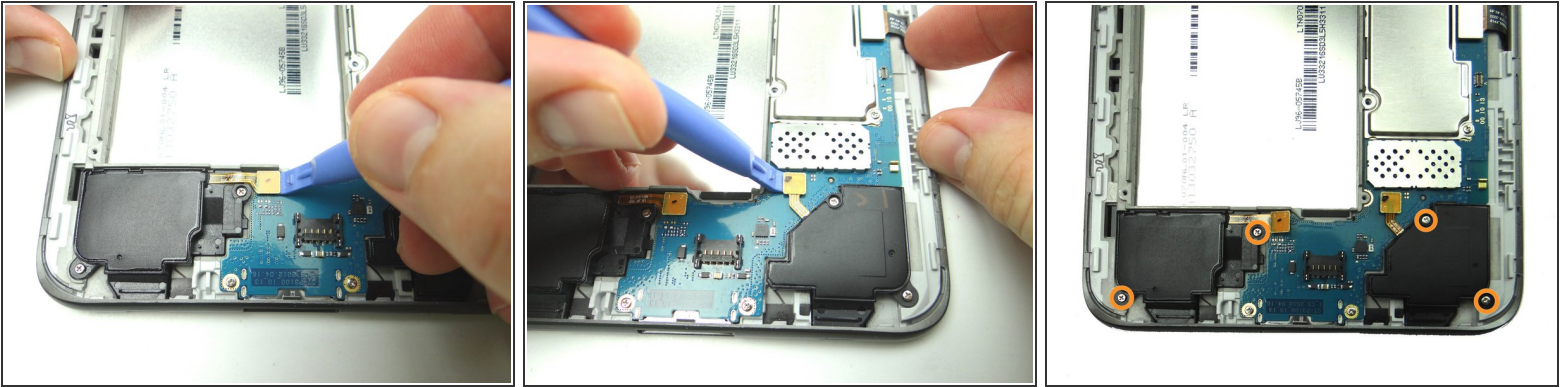
- Pictures 1 & 2: Disconnect power / volume / infrared sensor cable.
- Picture 3: Lift cable into upright position.

Step 11



- Pictures 1 & 2: Separate the cable from the mid-plate with the spudger while peeling it away with your fingers.
- Picture 3: Place cable in COMPARTMENT C.

Step 12 — Removal 2.2 - Loudspeakers



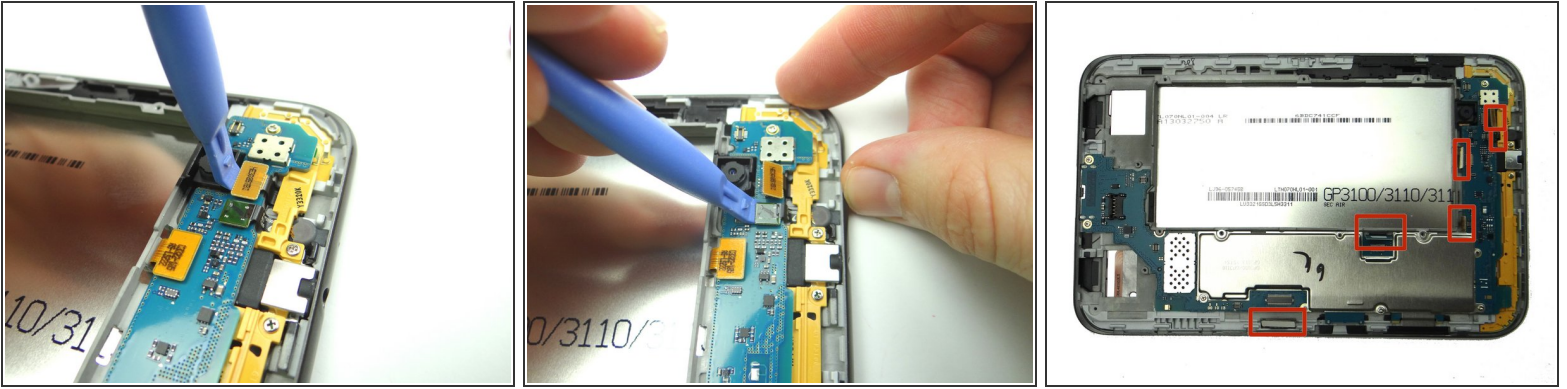
- Use the blue pry tool to disconnect the left and right speakers.
- Remove four 3.4 mm #00 Phillips screws. Place in SLOT 1.
- Place speakers in ZONE I.

Step 13 — Removal 3 - Logic Board



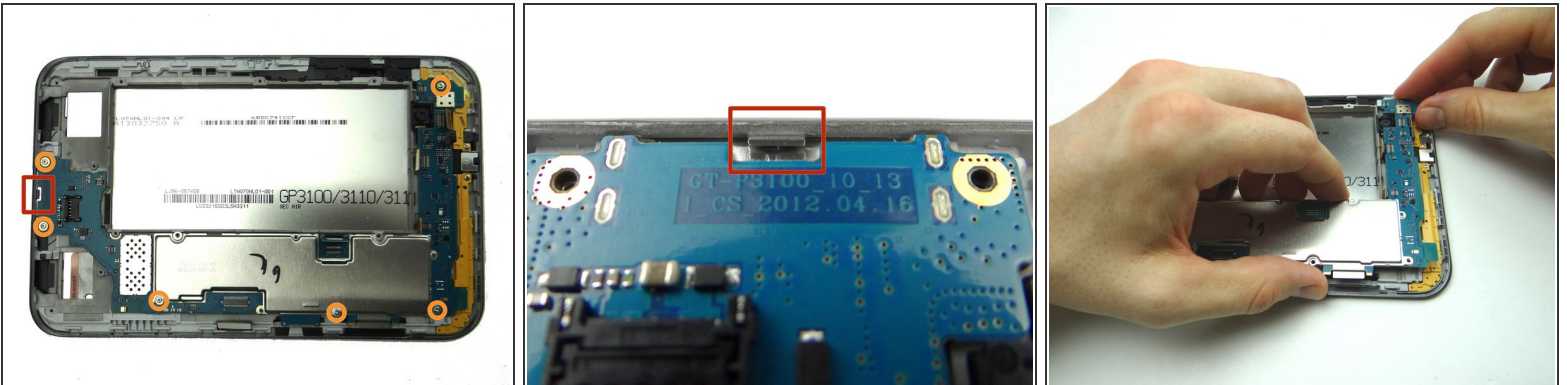
- Disconnect (top to bottom):
- Front-facing camera
- Headphone jack & Microphone assembly
- Rear Camera
- Contact pad
- LCD
- Digitizer

Step 14



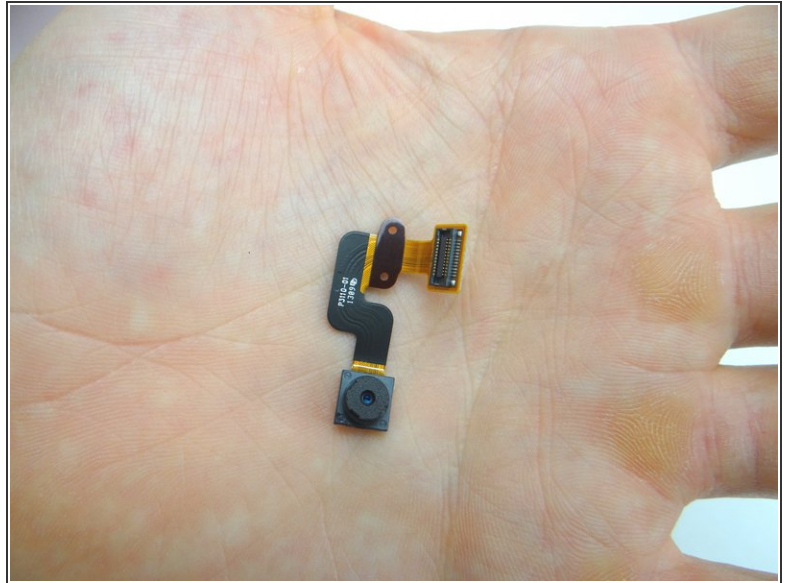
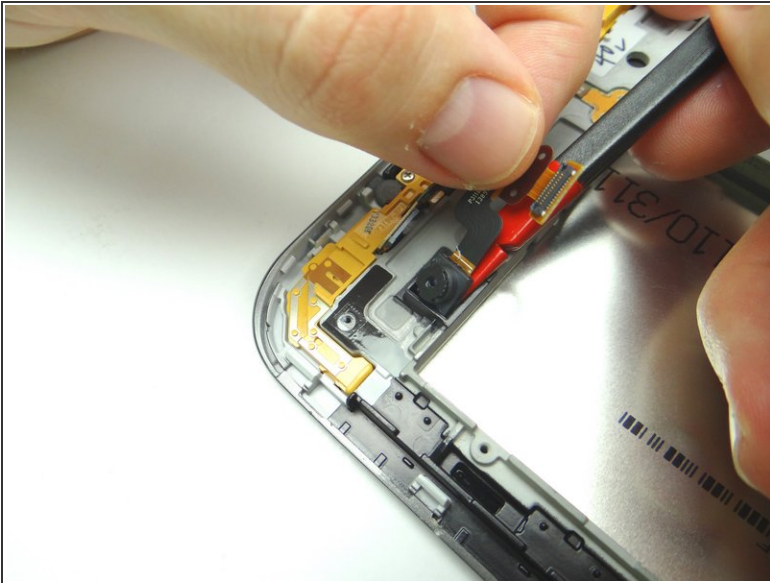
- Picture 1: Front-facing camera close-up.
- Picture 2: Headphone jack/mic assembly close-up.
- Picture 3: All cables up.

Step 15



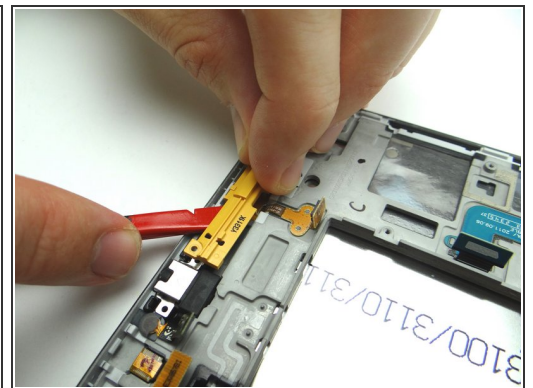
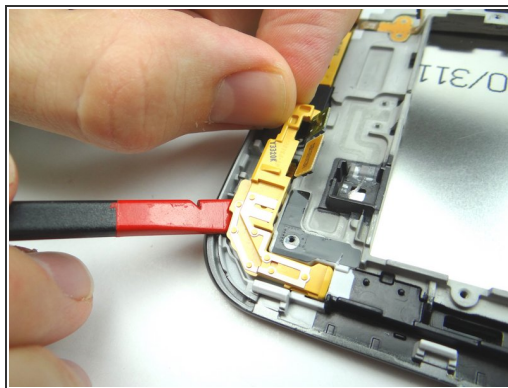
- Picture 1: Remove six 3.4 mm #00 Phillips screws. Place in SLOT 1.
- ⚠ Picture 2: Be aware that the charging port is situated under a ledge as you remove it (red square in Picture 1 & 2).
- Picture 3: Lift top of logic board first as you guide it up and over the top edge of the front panel.
- Make space for the logic board on the anti-static foam, away from the battery.

Step 16 — Removal 4.1 - Rear Camera



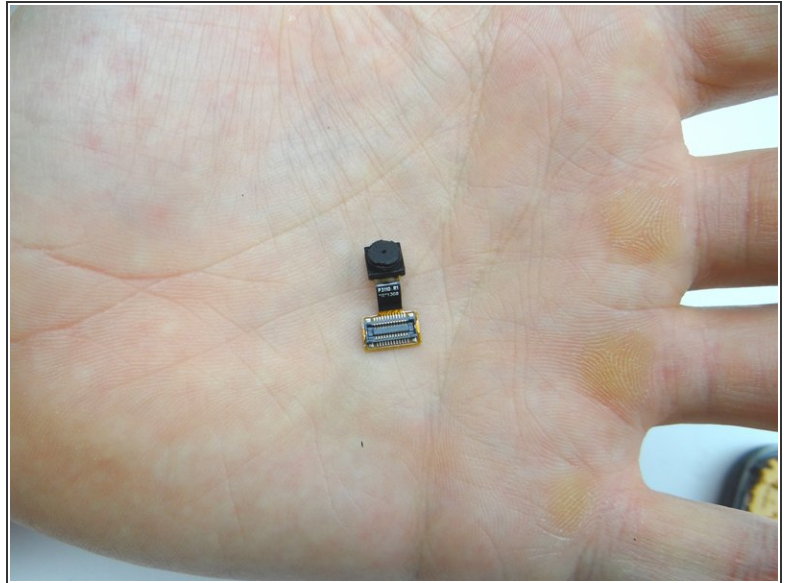
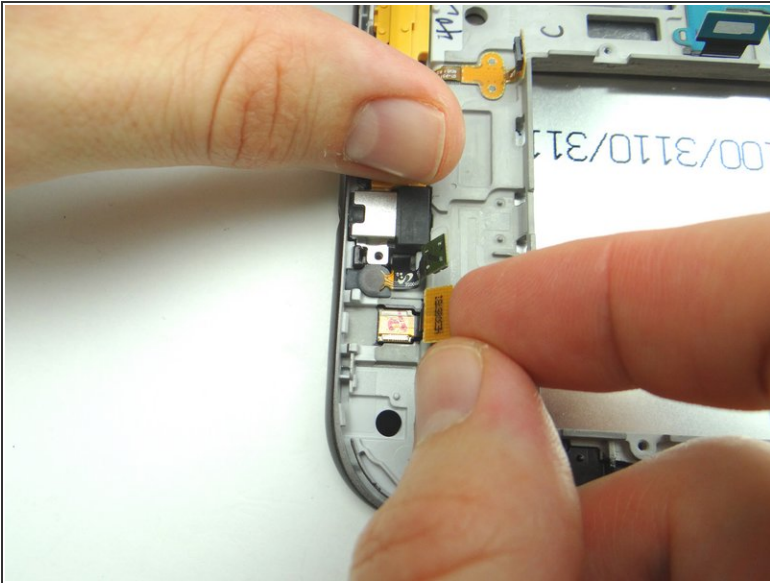
- Use spudger to peel up rear camera.
- Place in COMPARTMENT B.

Step 17 — Removal 4.2 - Yellow Brackets



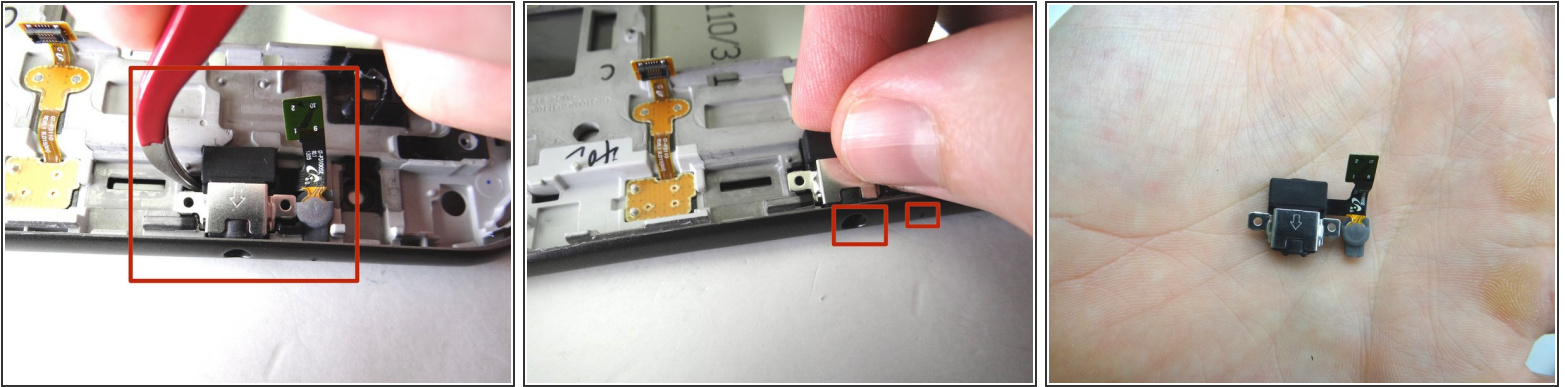
- Picture 1: Remove two 3.4 mm #00 Phillips screws. Place in SLOT 1.
- Picture 2: Lift corner bracket with spudger and fingers. Place in ZONE I.
- Picture 3: Lift opposite corner bracket and place in ZONE II.

Step 18 — Removal 5.0 - Front Camera



- Lift front-facing camera slightly, then peel away from its socket.
- Place in COMPARTMENT D.

Step 19 — Removal 5.1 - Headphone Jack / Mic



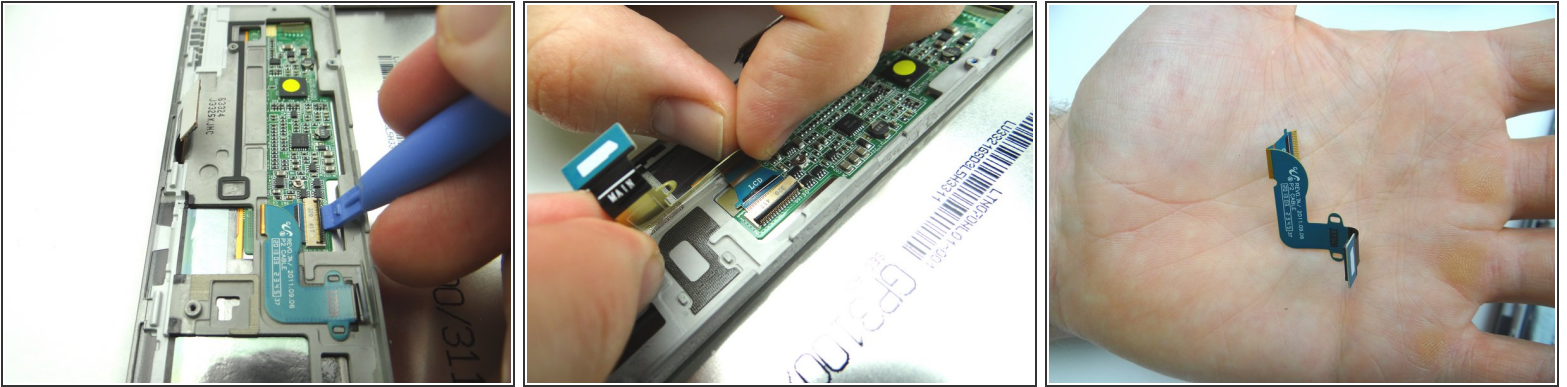
- The headphone jack and microphone are connected as one assembly, held in place with mild adhesive:
- Picture 1: Wedge the curved tip tweezers under the corner of the headphone jack. Lift just enough to pick up the assembly with your fingers.
- Picture 2: Guide the headphone jack and microphone up and away from the mid-plate.
- Picture 3: Place in COMPARTMENT E.

Step 20 — Removal 5.2 - Contact Pad



- Wedge the curved tip tweezers in between the tabs on the left side. Lift just enough to wedge the blue pry tool underneath.
- Use the blue pry tool to finish lifting the contact pad..
- Place in COMPARTMENT F.

Step 21 — Removal 5.3 - LCD Cable



- Open LCD ZIF connector with blue pry tool.
- Pull LCD cable away from ZIF connector.
- Place LCD cable in ZONE III.

Step 22 — Removal 6 - Mid-Plate



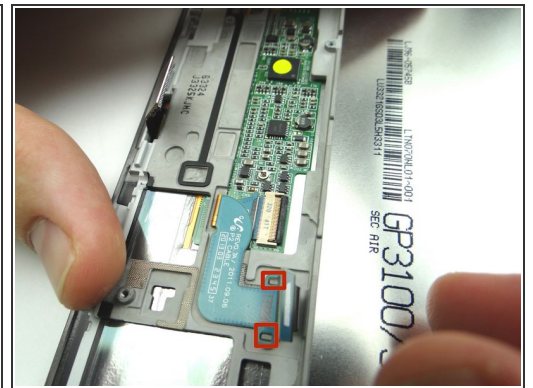
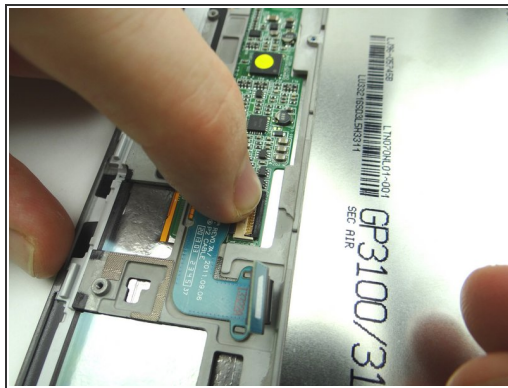
- Front panel remains.

Step 23 — Replacement 6 - Mid-Plate



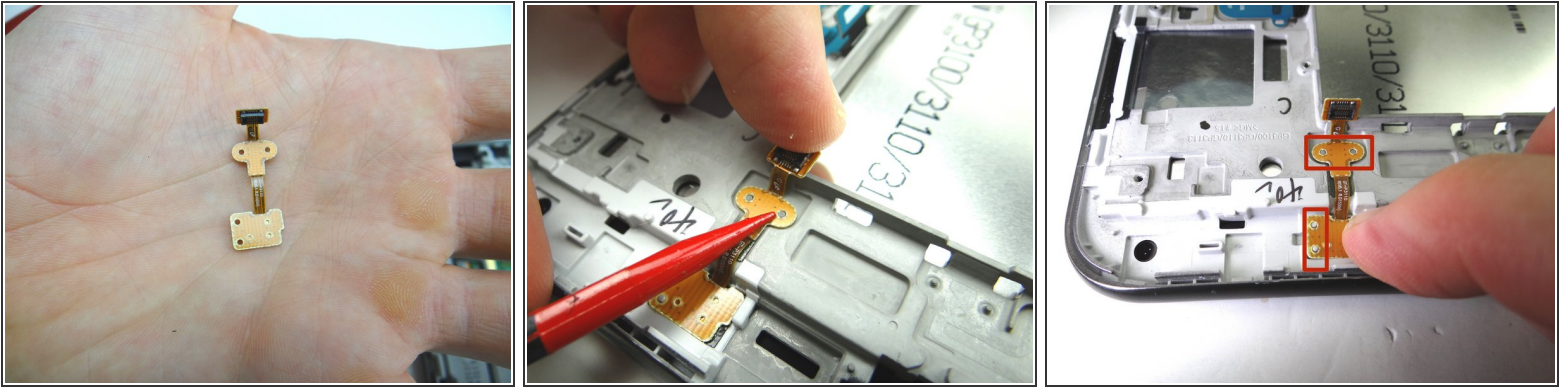
- Retrieve front panel.

Step 24 — Replacement 5.3 - LCD Cable



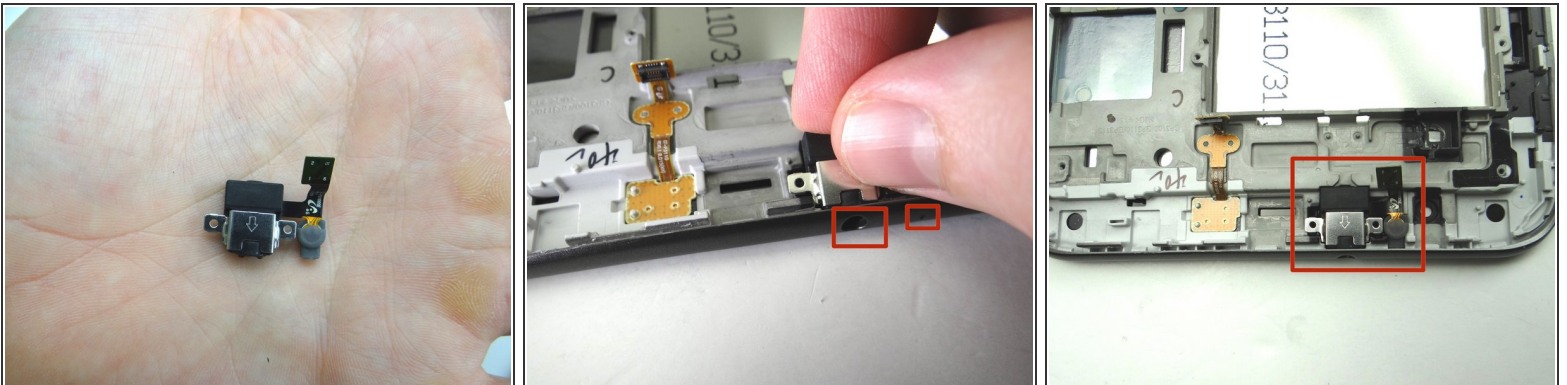
- From ZONE III: Push LCD cable back into ZIF connector on display assembly.
- Close ZIF connector.
- Picture 3: Make sure LCD cable is situated as pictured (note the tabs in red squares).

Step 25 — Replacement 5.2 - Contact Pad



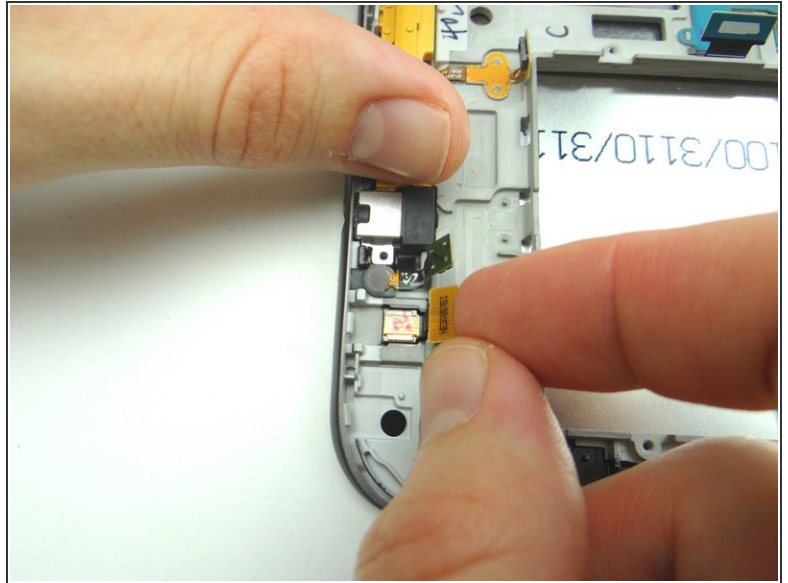
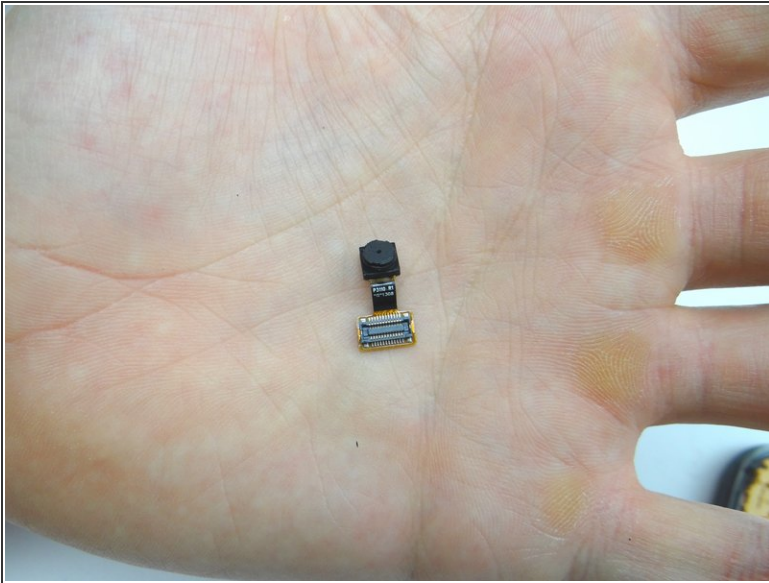
- From COMPARTMENT F:
- Line up the holes at the top and bottom of the contact pad with the tabs on the front panel.
- Push contact pad into place.

Step 26 — Replacement 5.1 - Headphone Jack / Mic



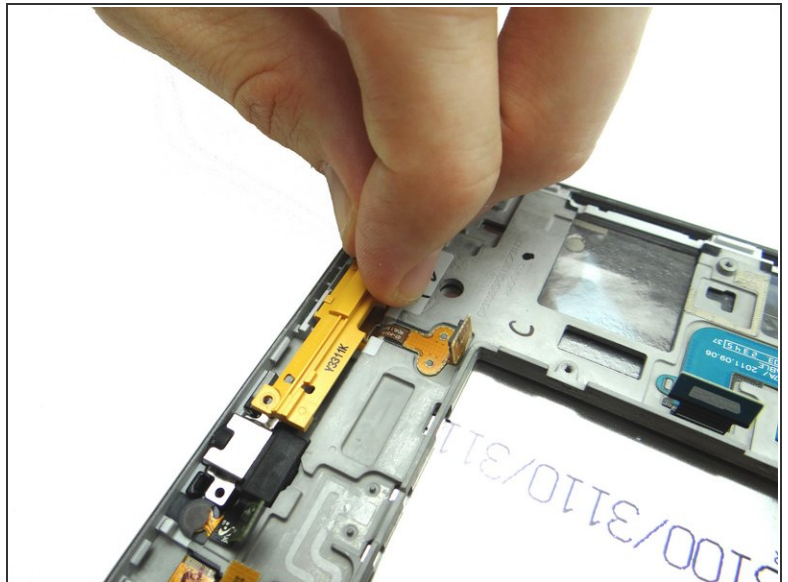
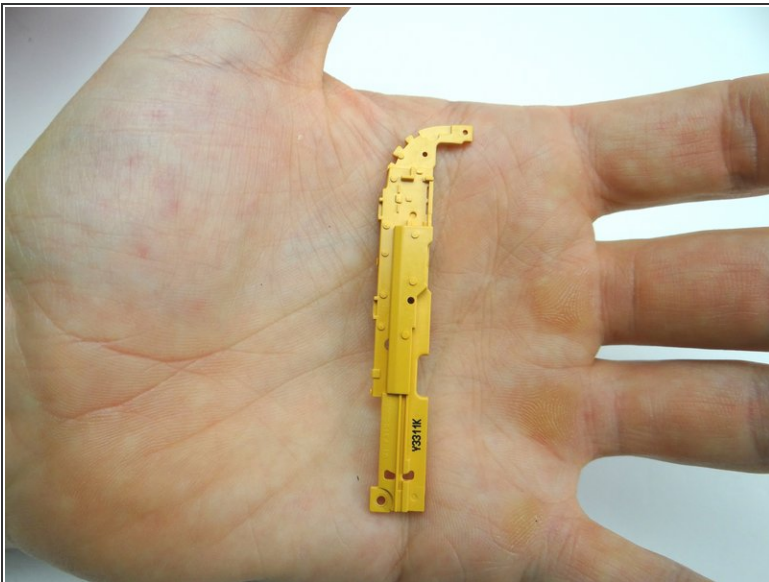
- From COMPARTMENT E:
- Picture 2: Seat headphone jack / microphone assembly on front panel. Make sure the headphone jack and microphone are lined up with their openings on the front panel (red squares).
- Picture 3: The assembly will look like this when properly seated.

Step 27 — Replacement 5.0 - Front Camera



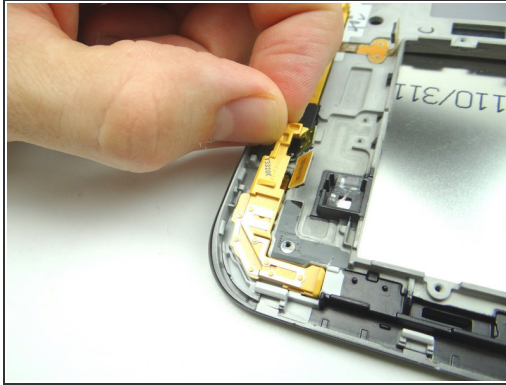
- From COMPARTMENT D, seat front-facing camera.

Step 28 — Replacement 4.2 - Yellow Brackets



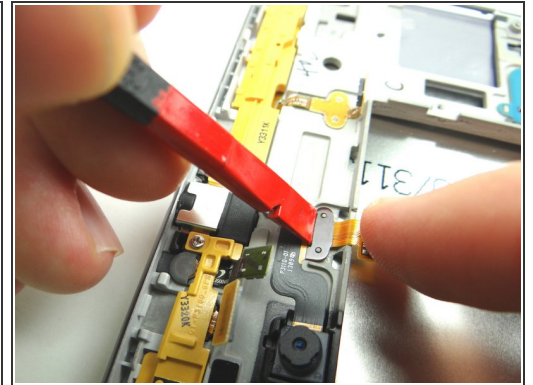
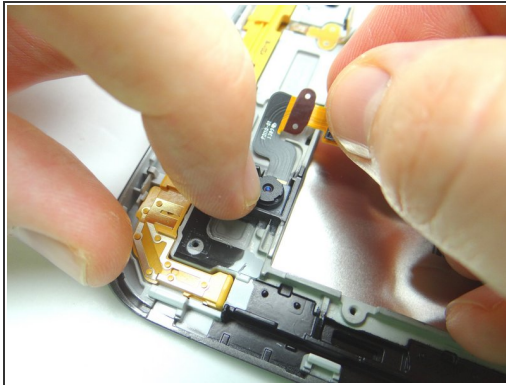
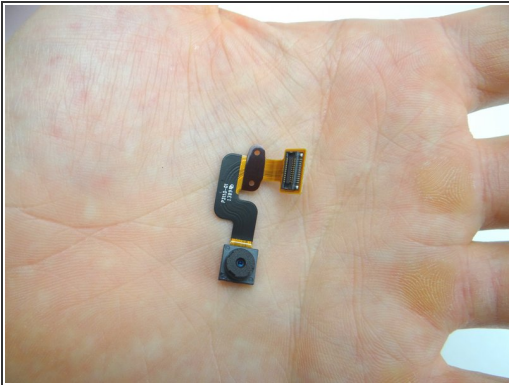
- Seat yellow bracket from ZONE II.

Step 29



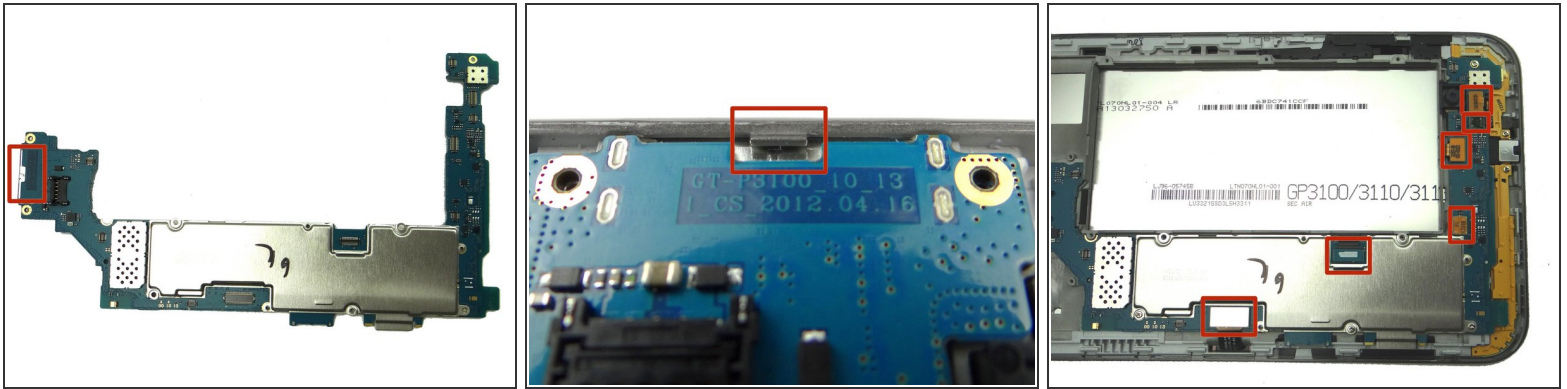
- Seat yellow bracket from ZONE I.
- Replace two 3.4 mm #00 Phillips screws from SLOT 1.

Step 30 — Replacement 4.1 - Rear Camera



- From COMPARTMENT B:
- Seat rear camera.
- Make sure holes in cable are placed over tabs on front panel.

Step 31 — Replacement 3 - Logic Board



- Replace logic board:
- Seat charging port first, under the tiny ledge in (red square Picture 2).

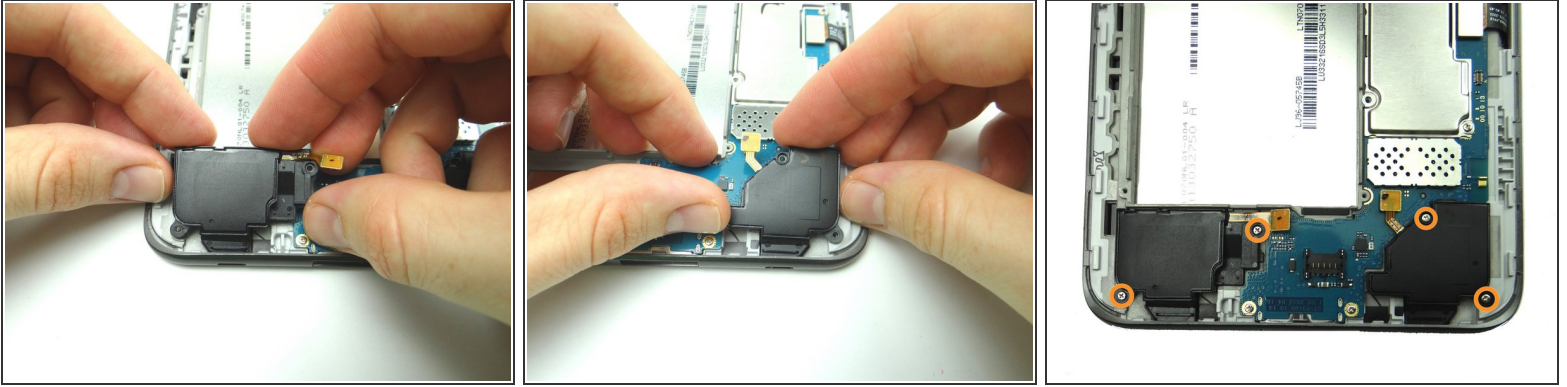
⚠ Make sure no cables get trapped below the logic board.

Step 32



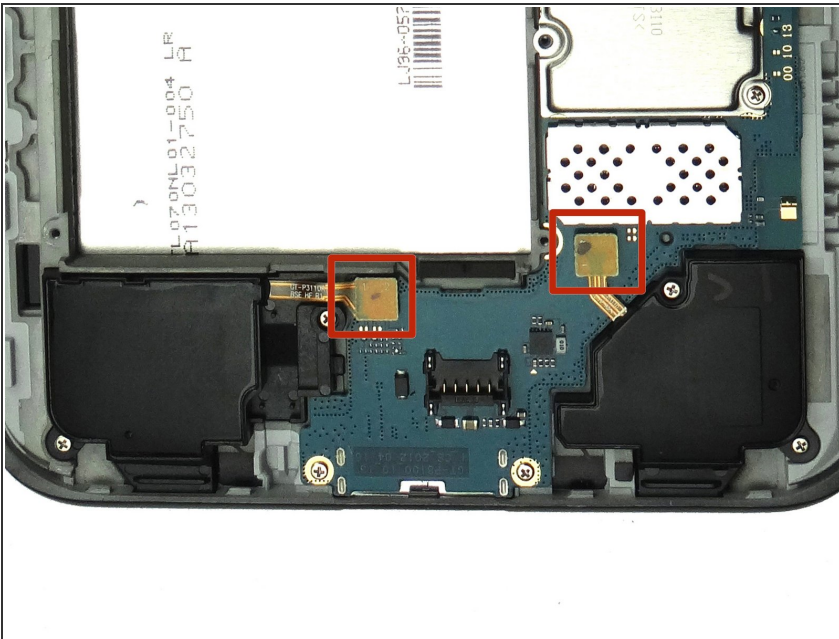
- Replace six 3.4 mm #00 Phillips screws from SLOT 1.
- Connect the six cables.

Step 33 — Replacement 2.2 - Loudspeakers



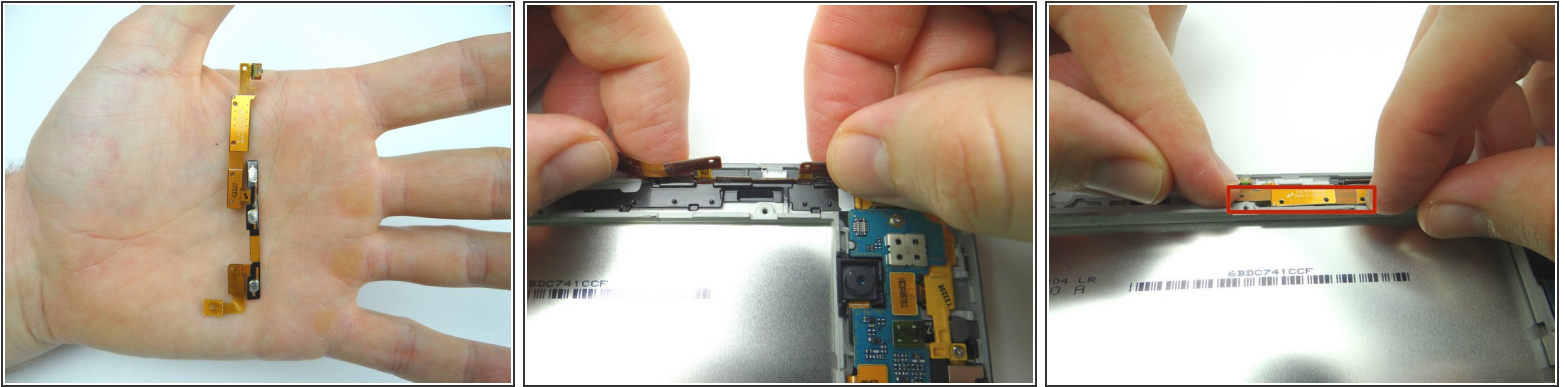
- Seat the left and right speakers.
- Replace four 3.4 mm #00 Phillips screws from SLOT 1.

Step 34



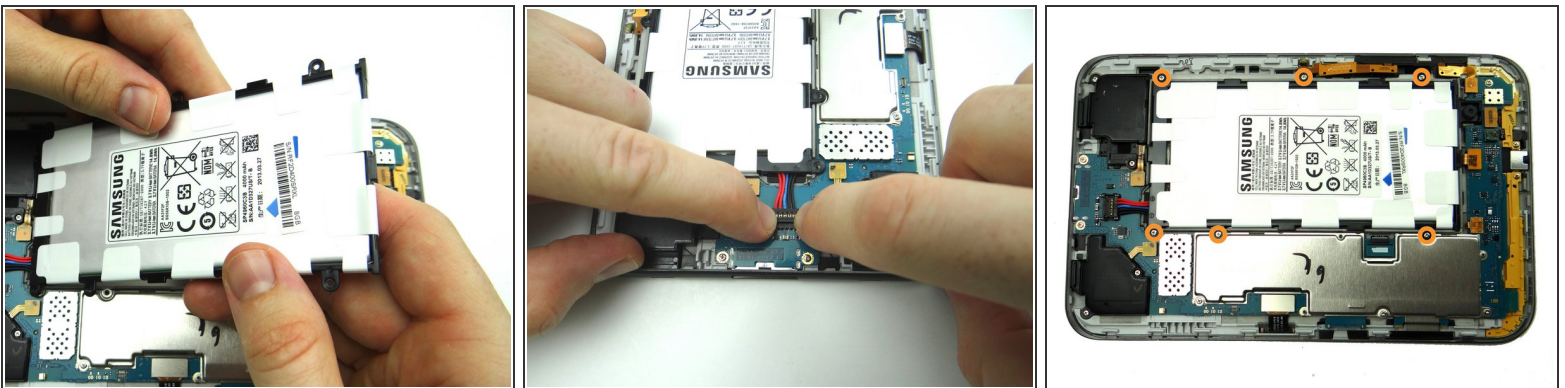
- Connect both speakers.

Step 35 — Replacement 2.1 - Power / Volume Buttons / Infrared



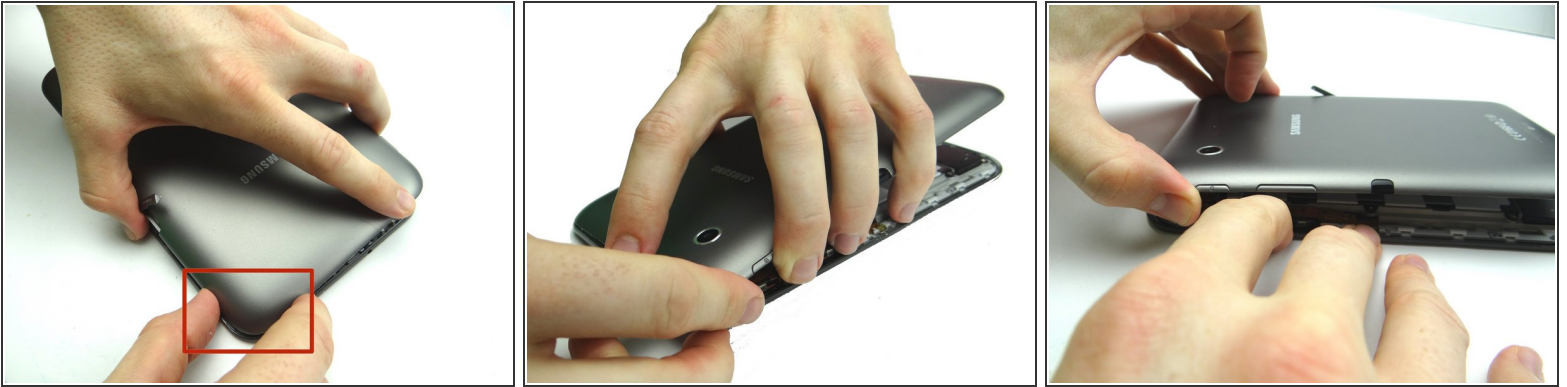
- From COMPARTMENT C, replace power / volume / Infrared cable.
- Adhere the cable to the black wall of the front panel.
- Make sure the cable is properly aligned against the wall and that the tiny mounting tabs are all poking through the holes in the cable (seven in all).

Step 36 — Replacement 2.0 Battery



- Seat the battery.
- Connect the battery by pushing straight down on the entirety of the connector.
- Replace six 3.4 mm Phillips #00 screws from SLOT 1.

Step 37 — Replacement 1 - Battery Cover



- Picture 1: Seat this corner first.
- Picture 2: Continue seating top edge.
- Picture 3: Make sure the power button and volume rocker seat properly and you push the sides into place.

Step 38



- Picture 1: Close the bottom edge
- Picture 2: Continue pushing all clips into place.
- Picture 3: Check each edge to make sure the clips are pushed down. Double-check near the charging port.

Step 39



- Replace SD card from COMPARTMENT A.
- Power up the device and test the replacement part or parts.