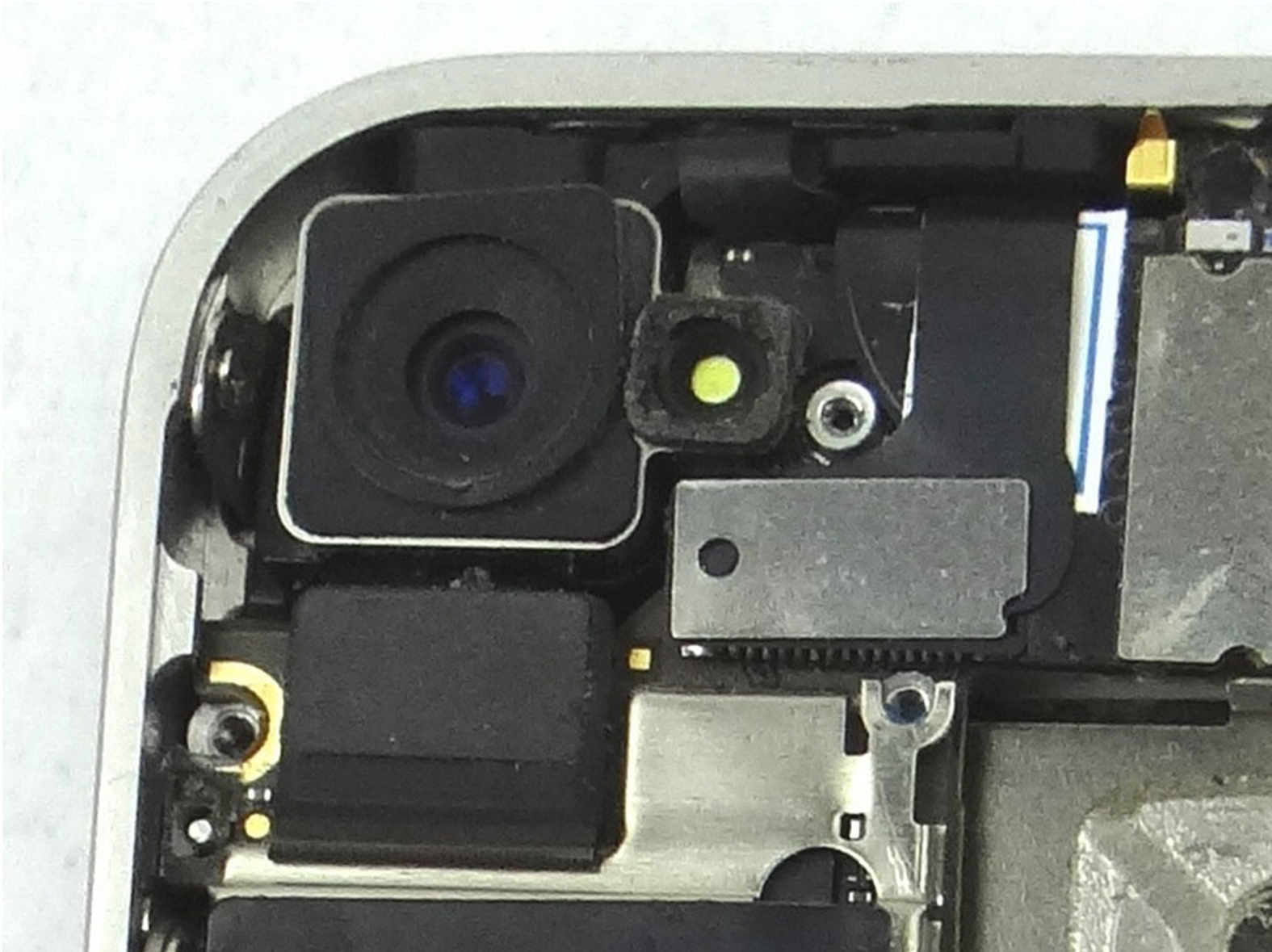


CELLPHONESANDBOX

Manual 03 - Rear Camera

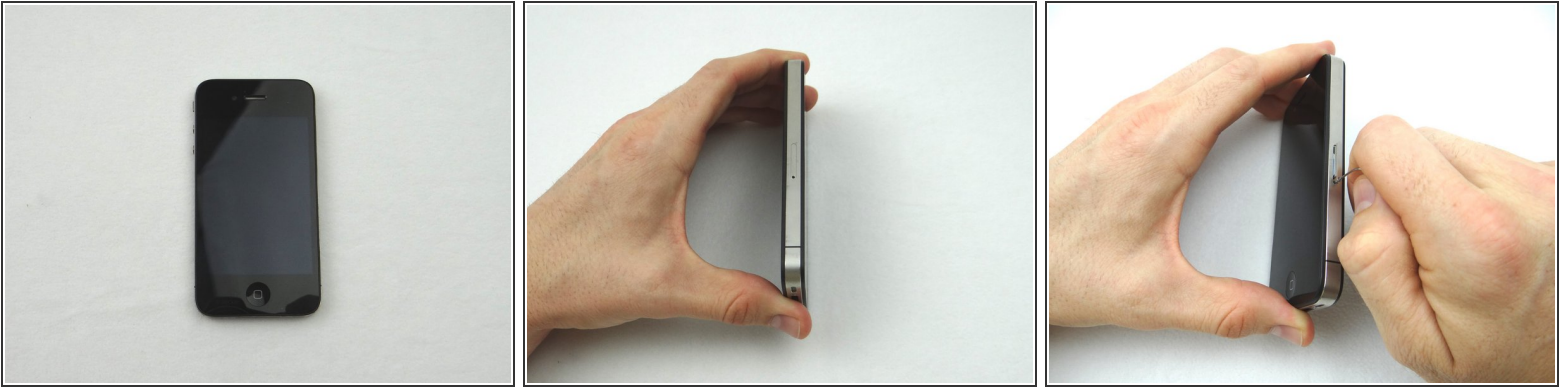
Written By: Josh Patterson



 **TOOLS:**

- [Technician Starter Package](#) (1)
-

Step 1 — Removal 1 - Battery Cover



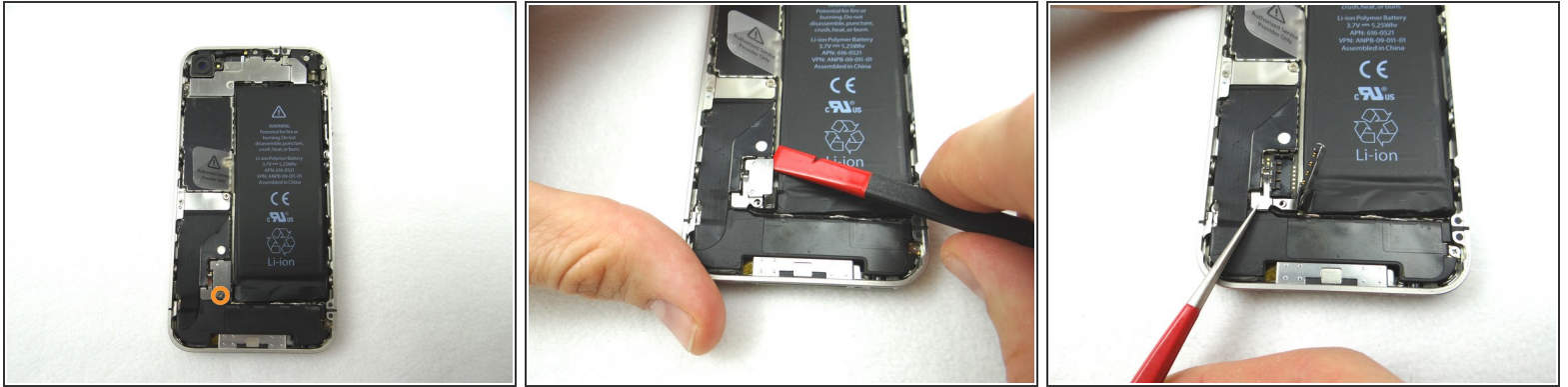
- Before disassembling the iPhone, thoroughly wash and dry your hands.
- Make sure handset is powered off. Use a SIM card eject tool or a paperclip to eject the SIM card tray. This may require a significant amount of force.
- Place the SIM card and SIM card tray in COMPARTMENT A.

Step 2



- Place the handset in your non-dominant hand. Remove two Pentalobe screws near charging port with special 5-point Pentalobe screwdriver. Place screws in SLOT 1.
- Gently slide battery cover upwards. Pull battery cover away from iPhone. Place battery cover in ZONE I.

Step 3 — Removal 2 - Battery



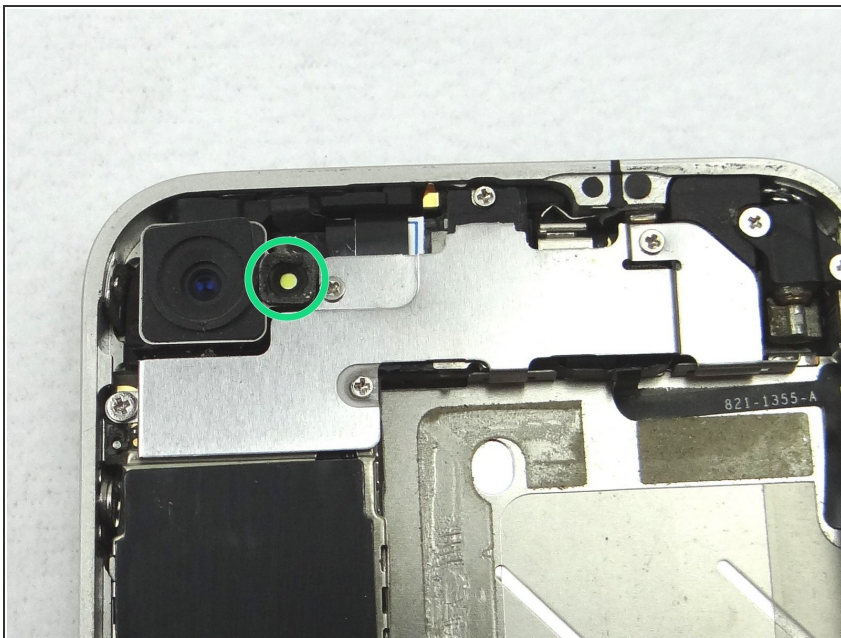
- Picture 1: Remove the 2.5 mm Phillips screw and place in SLOT 2.
 - Picture 2: Place the flat end of the Black Spudger (tip is painted red for better illustration) at the top of the battery connector. Gently twist the spudger counter-clockwise to lift the connector from its socket.
- ⚠ Be very careful to only pry up on the battery connector and not the socket on the logic board. If you pry on the socket, you could break the socket off the logic board.**
- Picture 3: Use Fine Point Tweezers to remove the T-Shaped Antenna Shield. Place the Antenna Shield with the screw in SLOT 2.

Step 4



- Apply low-level heat (100* Celcius or less) to edges of battery for 60 seconds to loosen the adhesive securing the battery to the iPhone.
- Wedge the flat end of the Black Spudger on the right edge of the battery. Gently pry up in three or four spots along the right edge to release the adhesive adhering it to the mid-frame.
- Once loose, use the plastic pull tab to peel the battery free from the iPhone. Place the battery in ZONE II

Step 5 — Removal 3 - Rear Camera



- Use a pair of tweezers to remove the outer plastic ring (if present) located on top of the rear camera's flash. Place in COMPARTMENT B.

Step 6



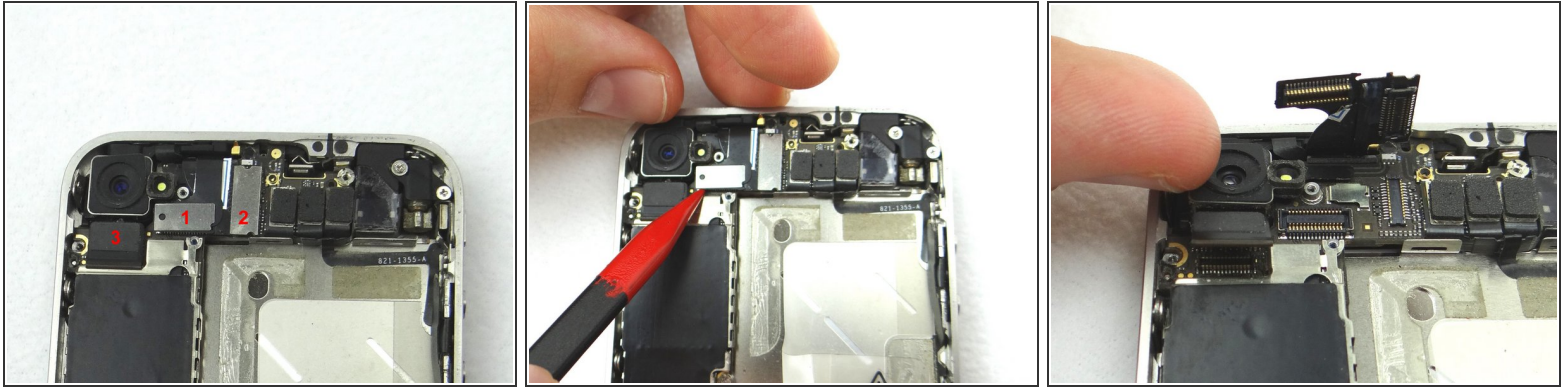
- Picture 1: Remove the 2.3 mm Phillips screw and place in SLOT 3.
- Picture 2: Remove the 1.4 mm Phillips screw and place in SLOT 4.
- Picture 3: Remove two 1.6 mm Phillips screws and place them in SLOT 5.

Step 7



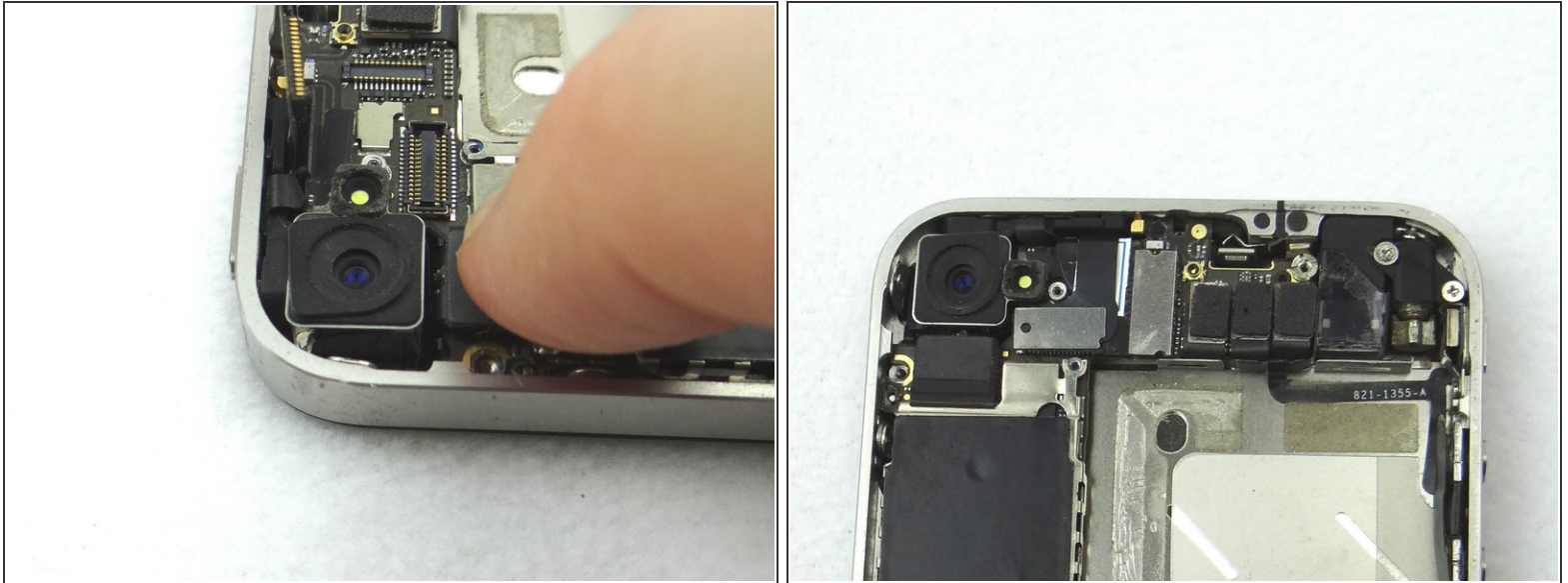
- Picture 1: Remove 4.8 mm Phillips screw and place in SLOT 6.
- Picture 2: Picture of the cable shield clipped to the mid-frame.
- Next, slowly pull Cable Shield towards bottom of iPhone until the tabs at the bottom of the shield (see red squares) are free.
- Place Cable Shield in COMPARTMENT B (with the plastic ring from the camera flash, if present)

Step 8



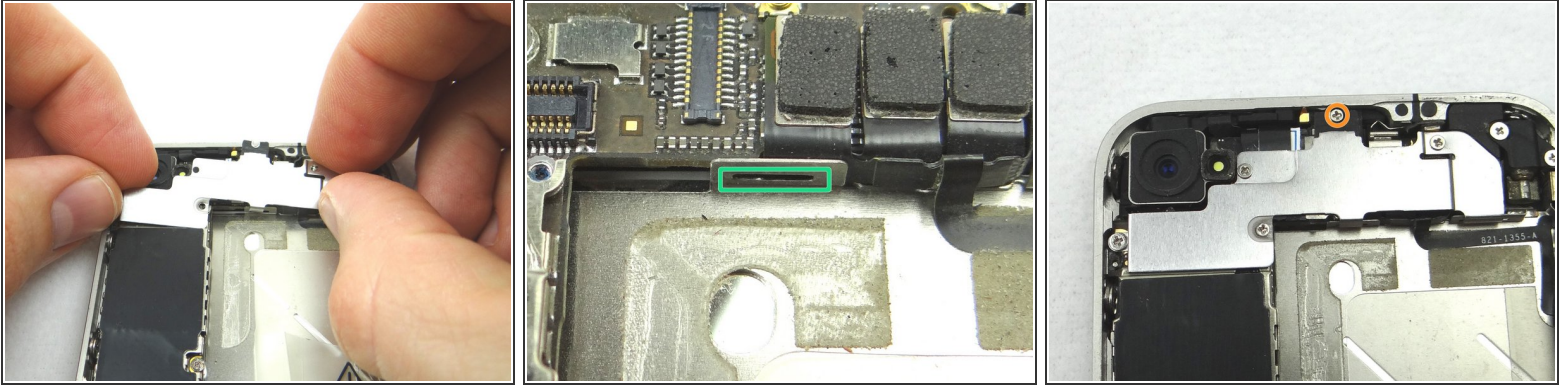
- Picture 1: Disconnect three ribbon cables in order.
 - Picture 2: Use the flat end of the black spudger to gently pry three cables free from their sockets on the logic board.
- ⚠ Be careful not to break any components off the surrounding area on the logic board as you pry upwards.
- Picture 3: Remove the Rear Camera with your fingers. Place in COMPARTMENT C.

Step 9 — Replacement 3 - Rear Camera



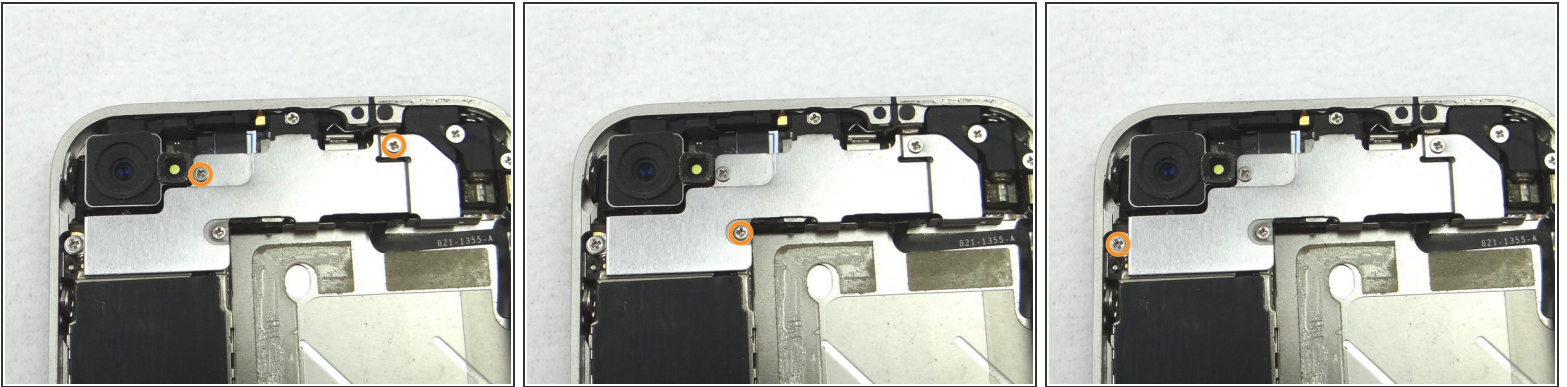
- Picture 1: Replace Rear Camera from COMPARTMENT C (or replacement part). Push connector into socket on logic board.
- Also in Picture 1: Reconnect the digitizer and LCD cables sitting upright.
- Picture 2: This is what you should see after connecting the camera, digitizer and LCD cables.

Step 10



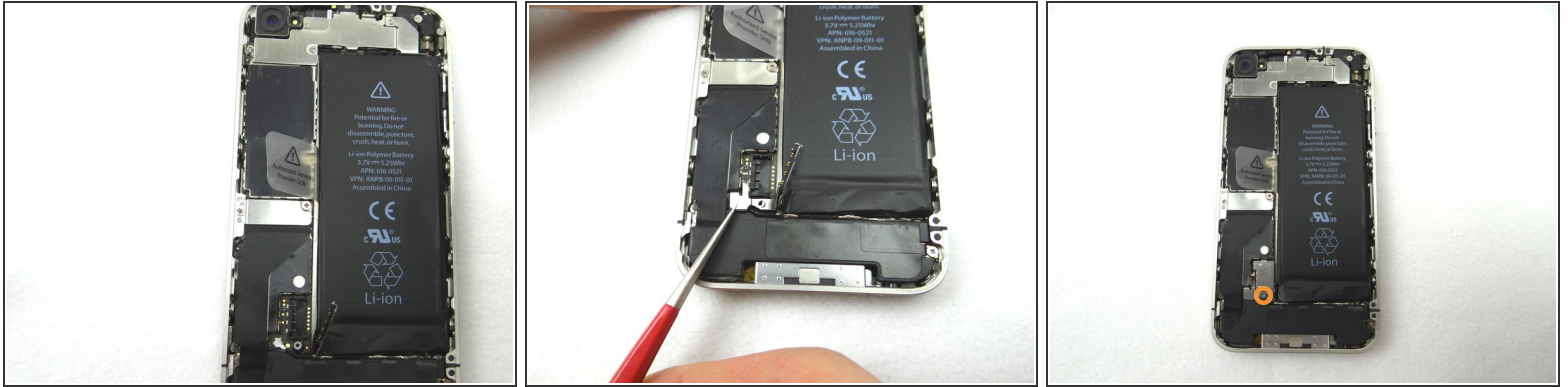
- Picture 1: Replace Cable Shield from COMPARTMENT B.
- Picture 2: Position the protruding tabs at the bottom of the Cable Shield into the slots on the EMI Shield (connected to the logic board) below.
- Picture 3: Replace one 4.8 mm Phillips screw from SLOT 6.

Step 11



- Picture 1: Replace the two 1.6 mm Phillips screws from SLOT 5.
- Picture 2: Replace one 1.4 mm Phillips screw from SLOT 4.
- Picture 3: Replace one 2.3 mm Phillips screw from SLOT 3.

Step 12 — Replacement 2 - Battery



- Picture 1: Place the battery from ZONE II (or replacement part) in the mid-frame.
- Picture 2: With Fine Point Tweezers, place the T-Shaped Antenna Shield from SLOT 2 between the battery connector and its socket.
- ⓘ Make sure the screw slot on the battery connector lines up with the screw slot on the Antenna Shield, and that they both line up with the screw slot on the battery socket. If needed use tweezers to adjust its position.
- Picture 3: Use the 2.5 mm Phillips screw from SLOT 2 to secure the bottom of the battery connector.

Step 13 — Replacement 1 - Battery Cover



- Picture 1: Replace battery cover from ZONE I (or replacement part). Gently slide battery cover downward until it locks into place.
- Picture 2: Place the handset in your non-dominant hand, then replace two Pentalobe screws near charging port with special 5-point Pentalobe screwdriver. The screws are in SLOT 1.
- Picture 3: Replace the SIM card and SIM card tray from Sandbox COMPARTMENT A.